

2010



PSSA

Preliminary Results

Report to the School Reform Commission
Office of Accountability - June 2010

About the PSSA

PSSA Reading and Math is administered in grades 3, 4, 5, 6, 7, 8 and 11. These results are used to calculate Adequate Yearly Progress.

Results are reported by performance levels: Advanced (highest), Proficient, Basic, Below Basic

This year, PSSA tests were administered from April 7 to May 7

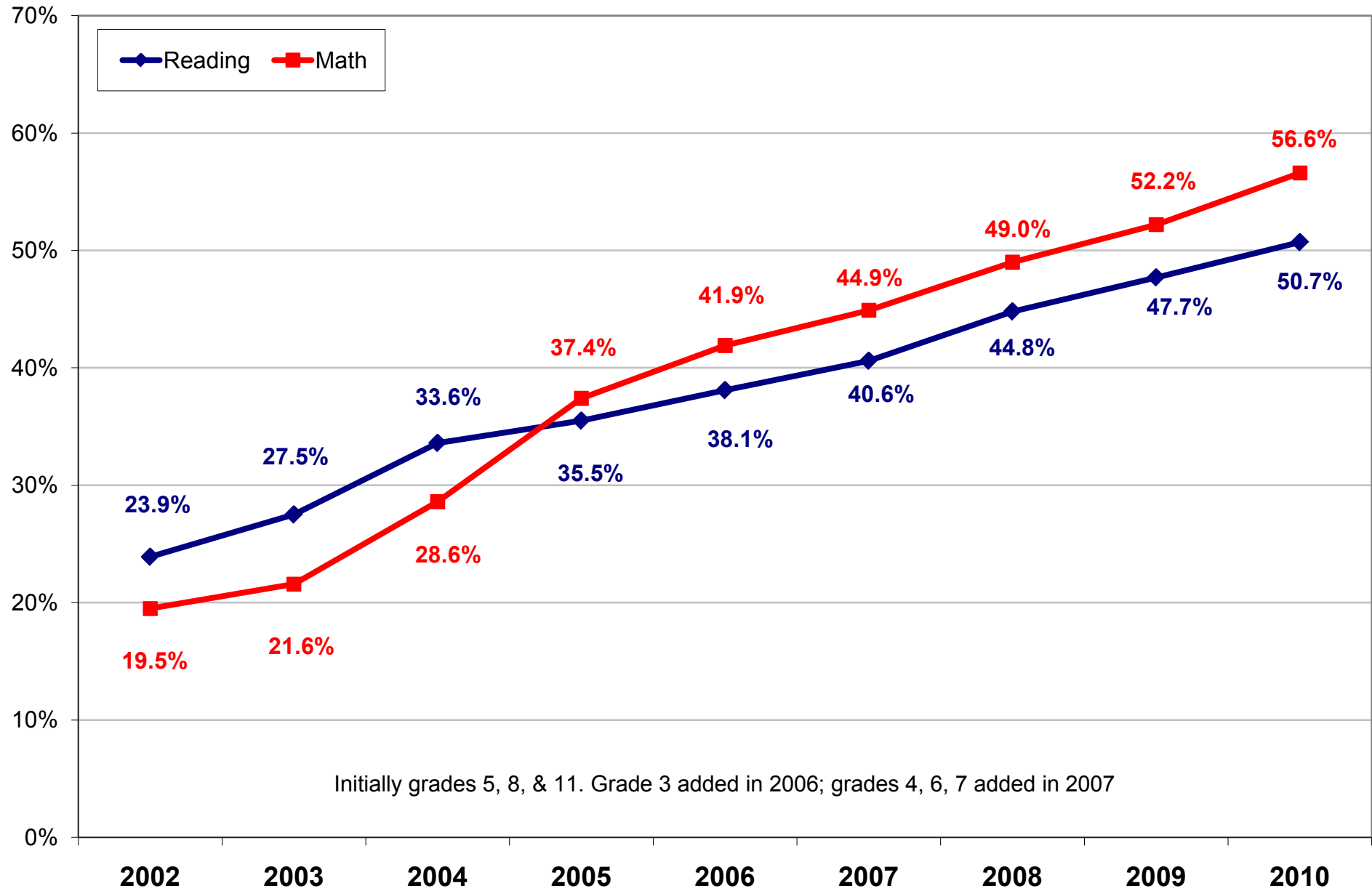
2010 Highlights

For the first time, more than 50% of students scored Proficient or Advanced

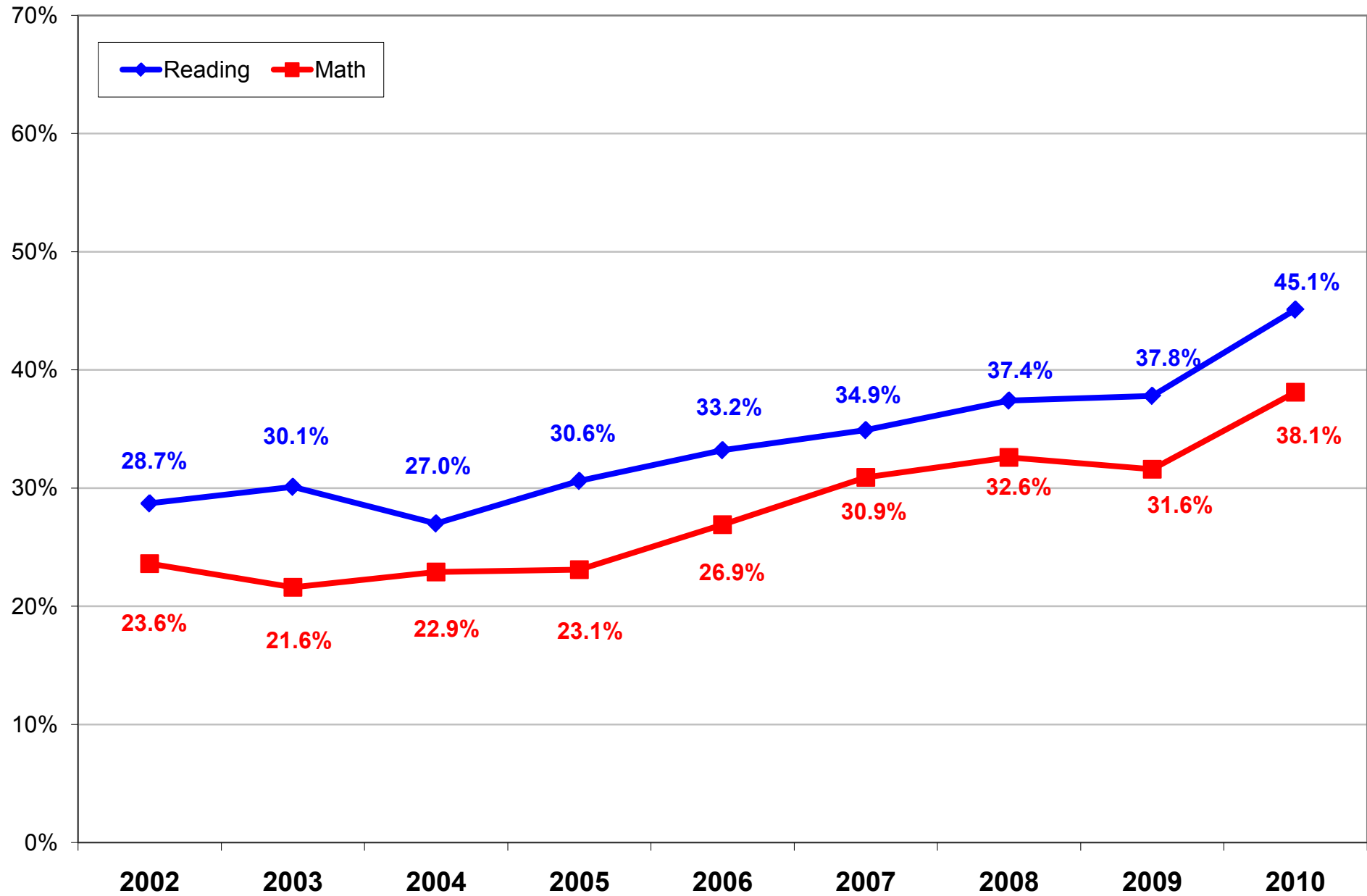
Empowerment Schools increased their proficiency rates more than the other District schools

Grade 11 made the largest gains ever

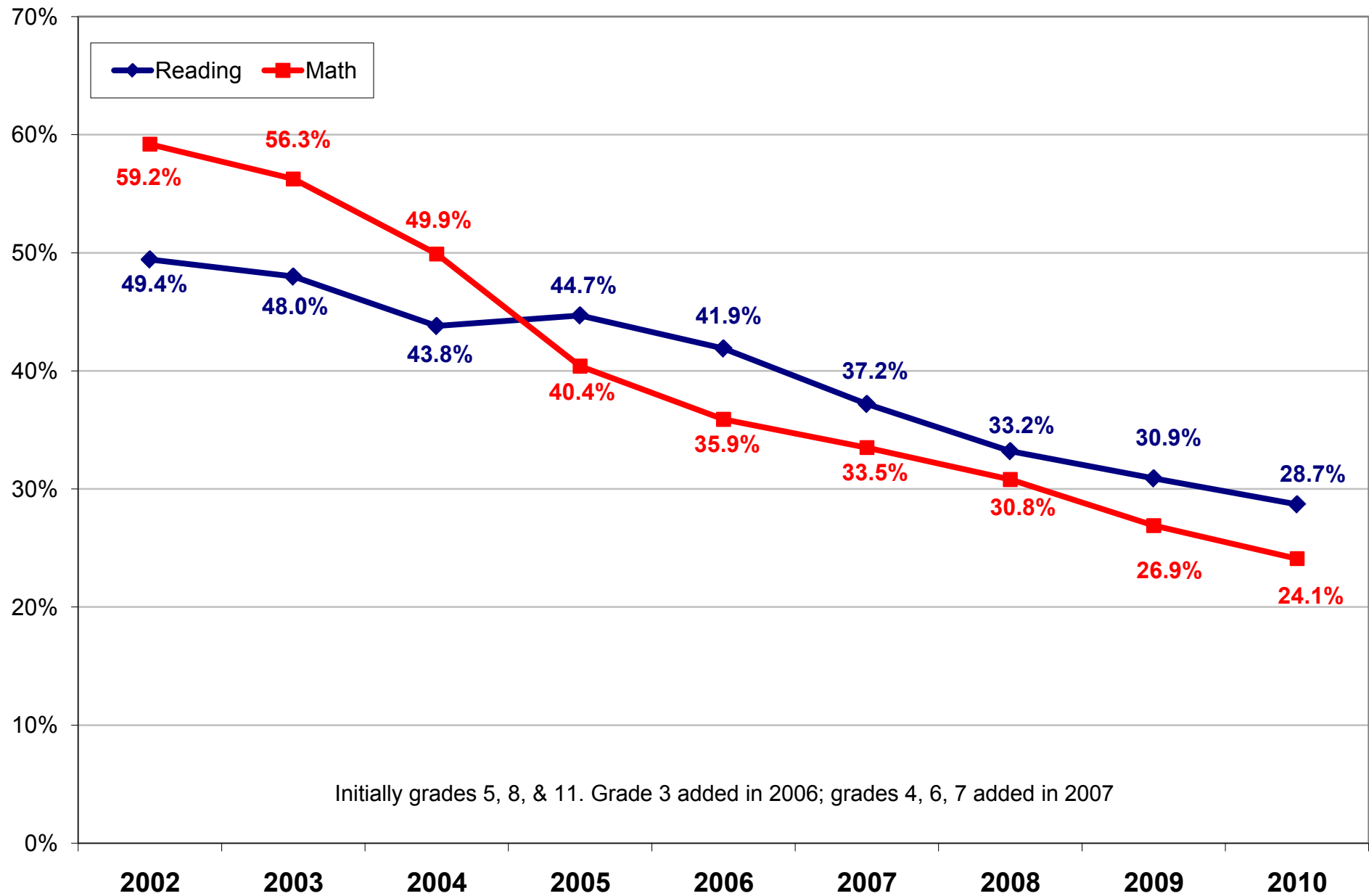
School District of Philadelphia
2002-2010 PSSA Results
Percentage of Students Advanced or Proficient
All Grades Combined



School District of Philadelphia
2002-2010 PSSA Results
Percentage of Students Advanced or Proficient
Grade 11



School District of Philadelphia
2002-2010 PSSA Results
Percentage of Students *Below Basic*
All Grades Combined

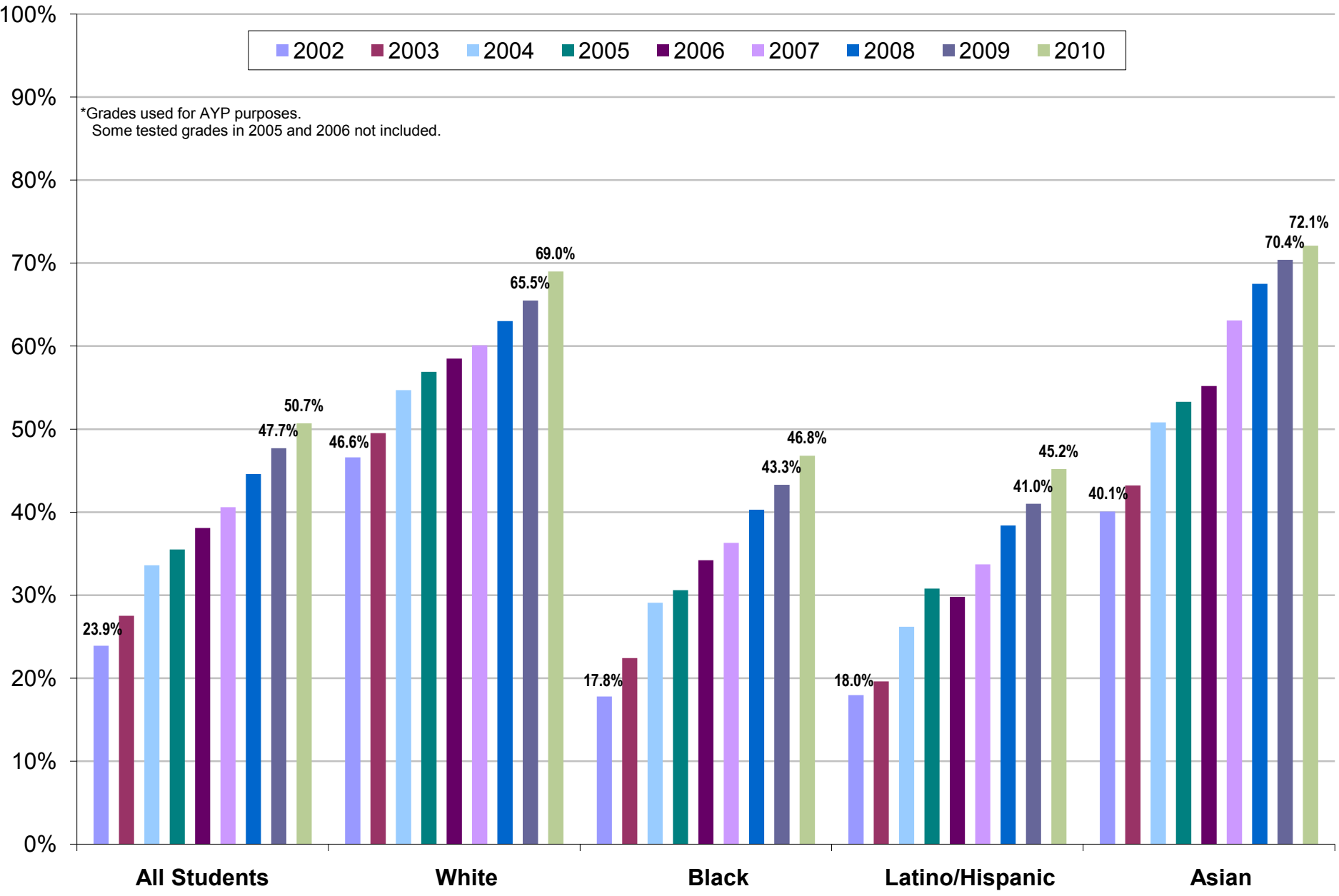


School District of Philadelphia
2002–2010 PSSA Results

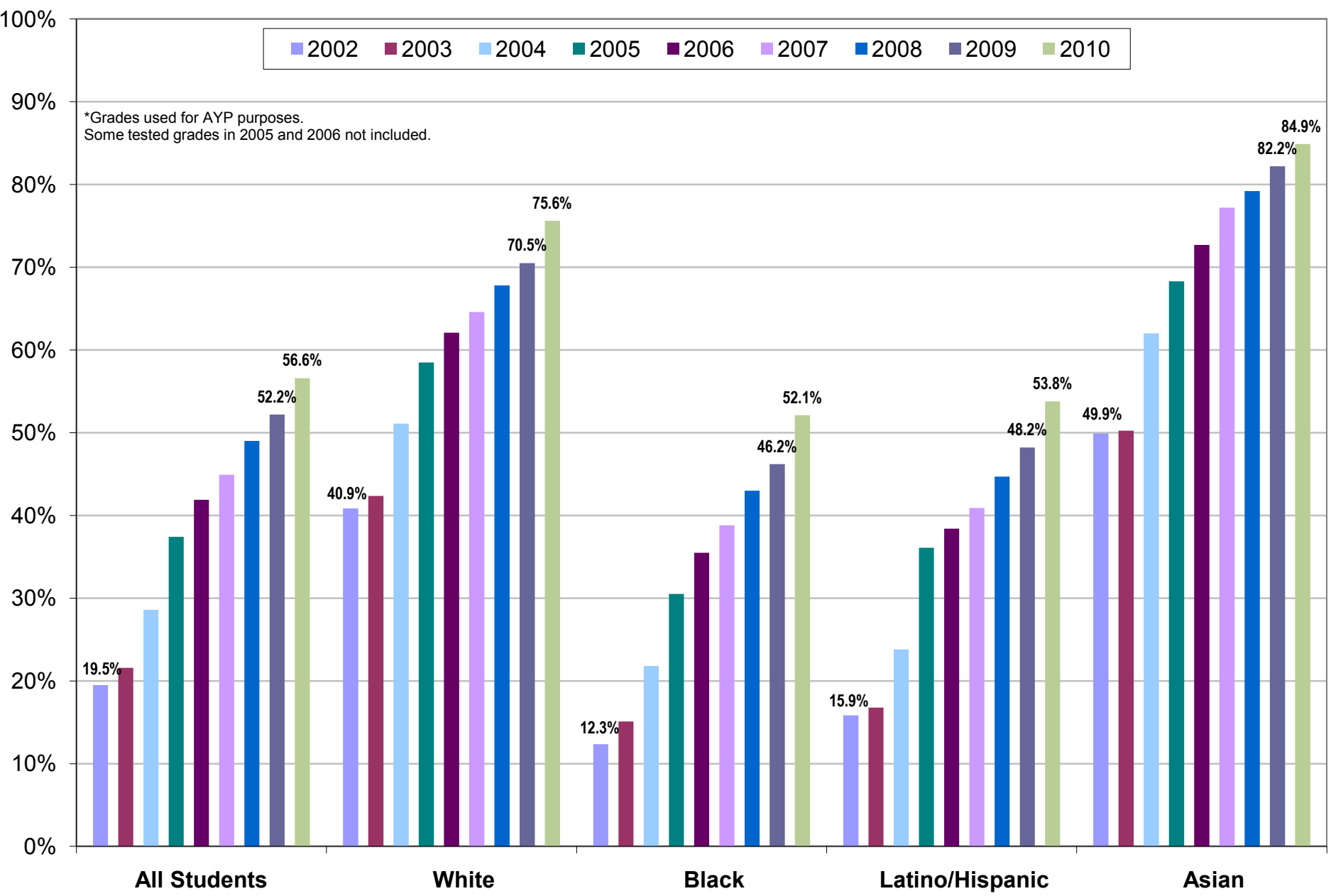
Percentage of Students Advanced or Proficient — Comparison by Group
All Grades Combined - Reading



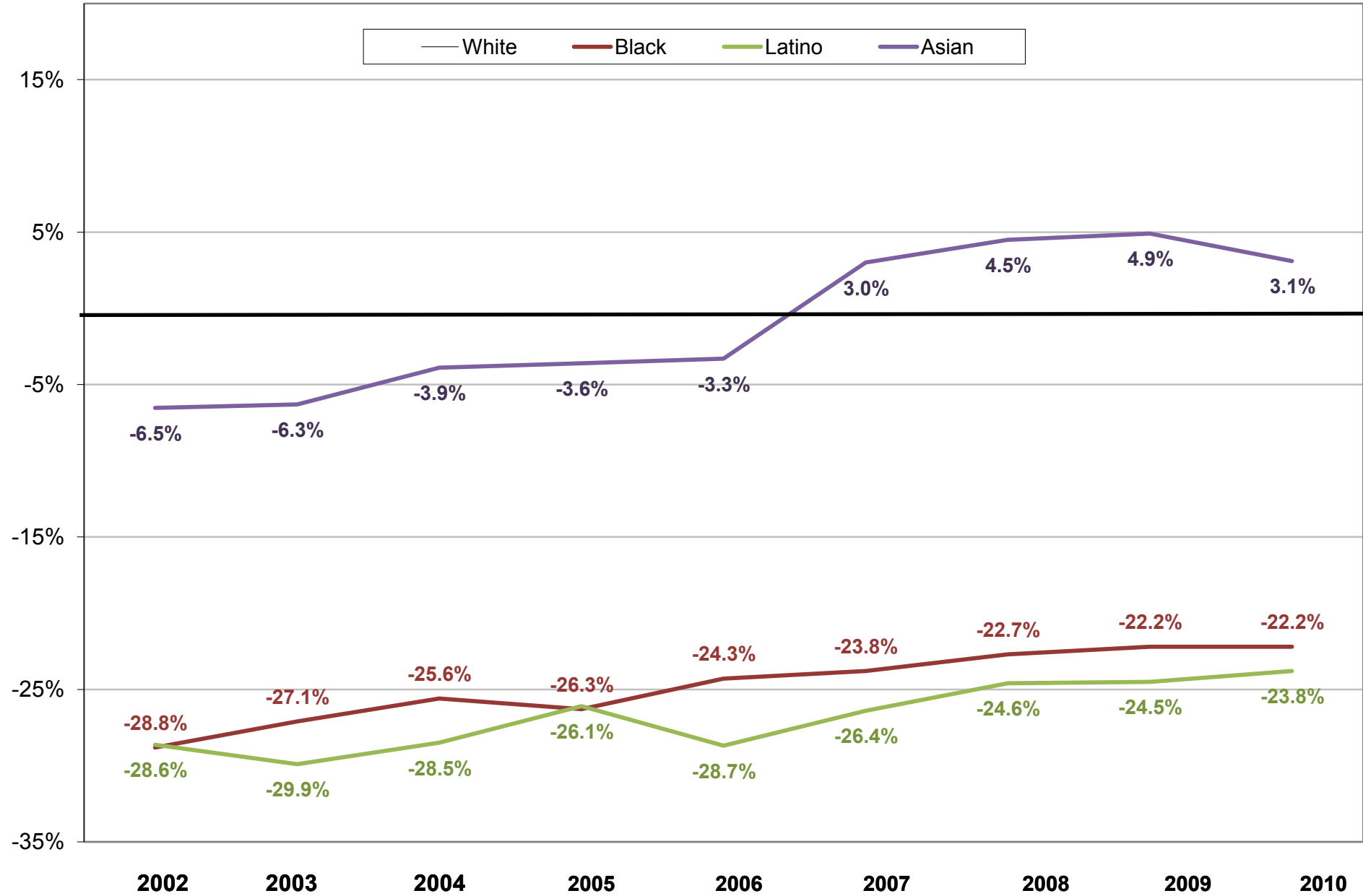
*Grades used for AYP purposes.
Some tested grades in 2005 and 2006 not included.



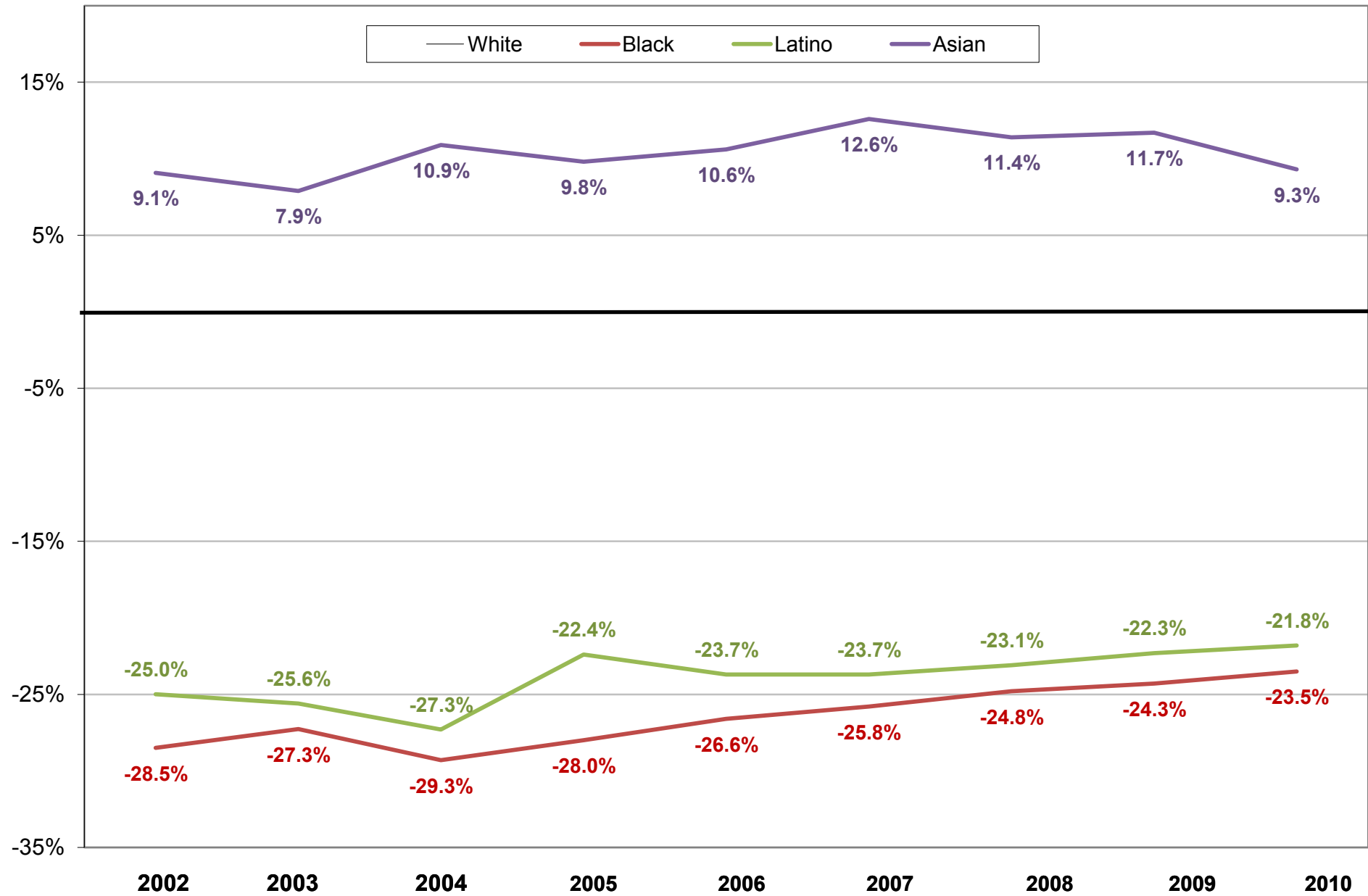
School District of Philadelphia
2002–2010 PSSA Results
Percentage of Students Advanced or Proficient — Comparison by Group
All Grades Combined - Math



School District of Philadelphia
 2002–2010 PSSA Results
Percentage of Students Advanced or Proficient — Achievement Gap
All Grades Combined - Reading



School District of Philadelphia
2002–2010 PSSA Results
Percentage of Students Advanced or Proficient — Achievement Gap
All Grades Combined - Math

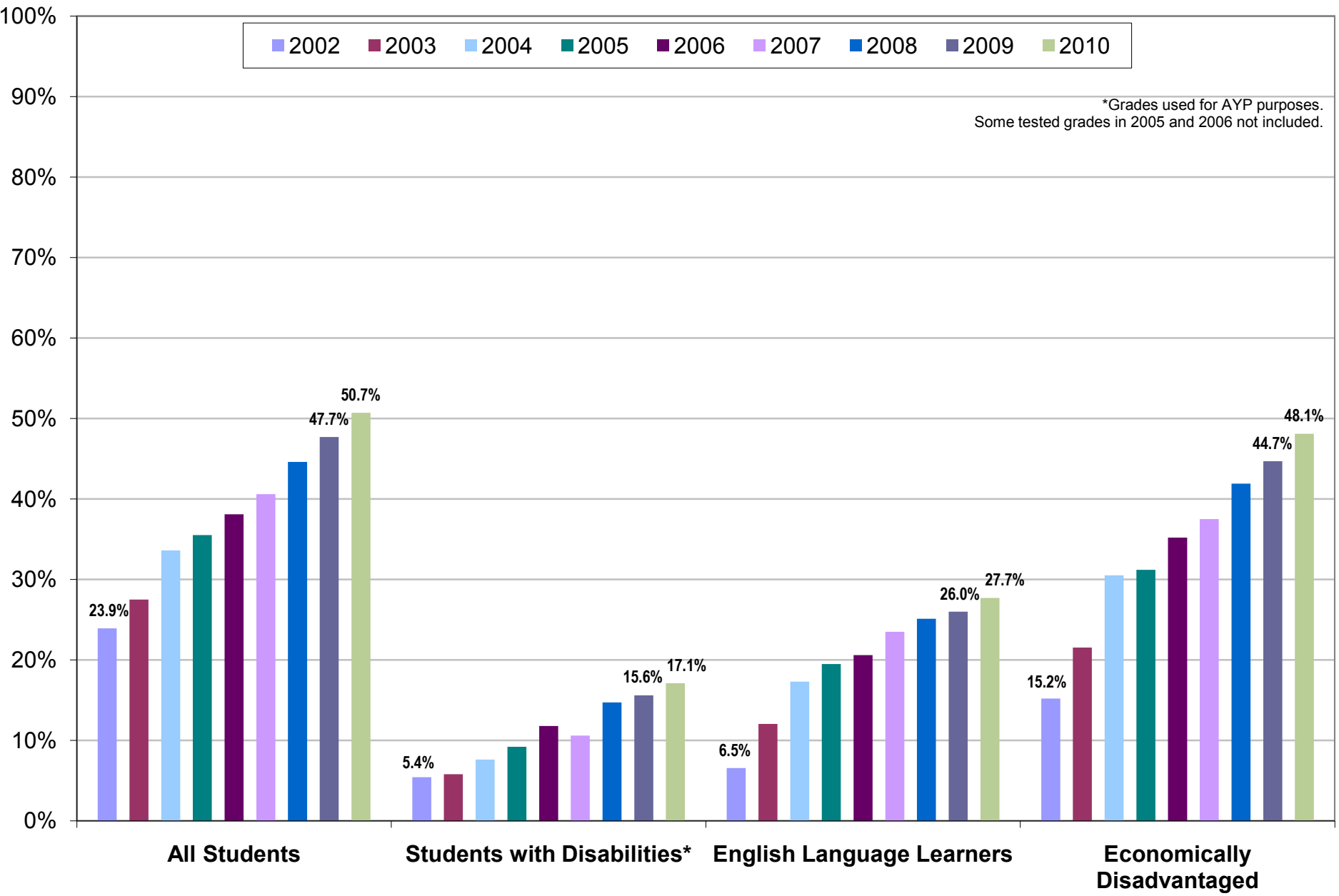


School District of Philadelphia
2002–2010 PSSA Results

Percentage of Students Advanced or Proficient — Comparison by Group
All Grades Combined - Reading

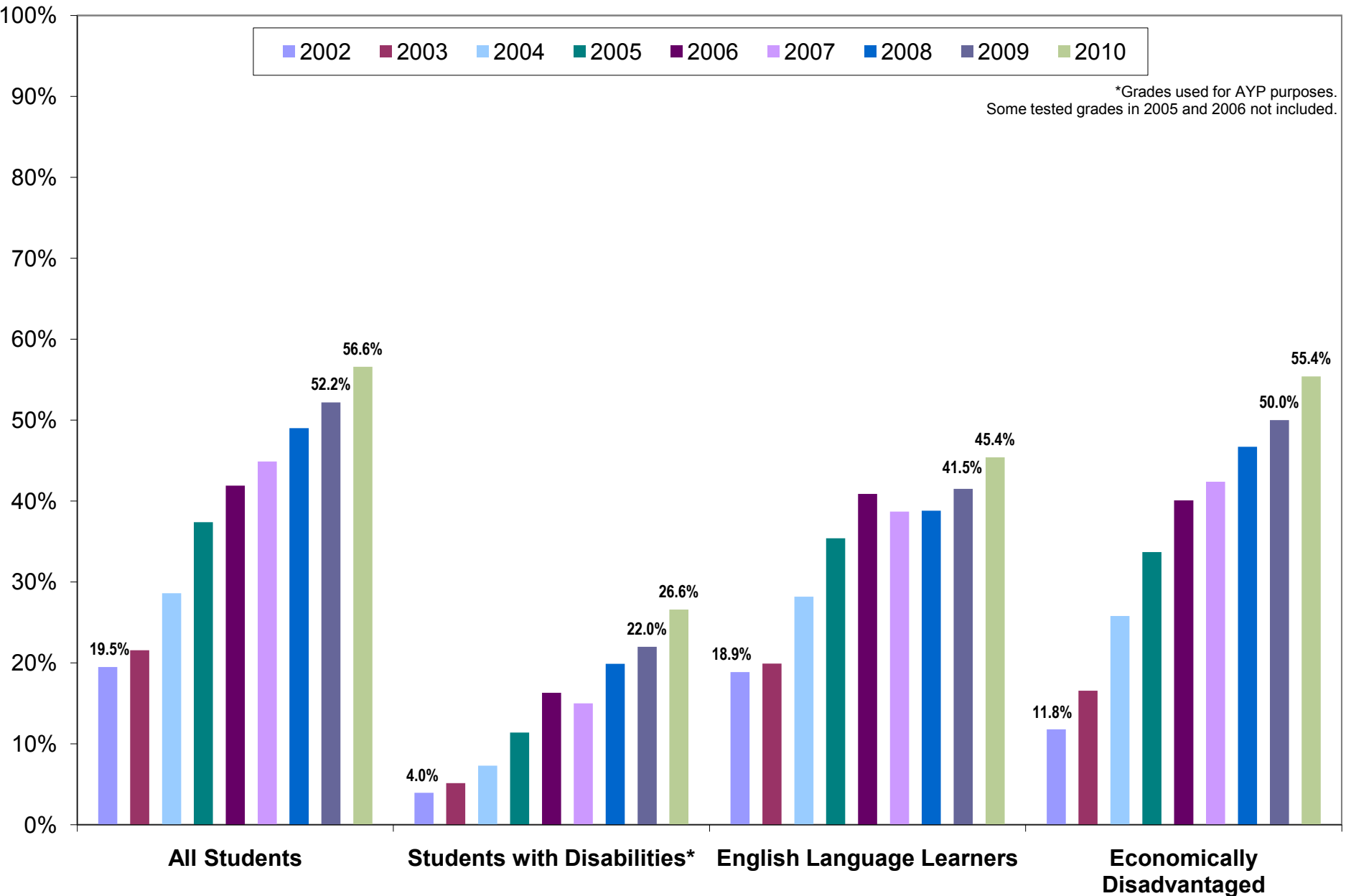


*Grades used for AYP purposes.
Some tested grades in 2005 and 2006 not included.

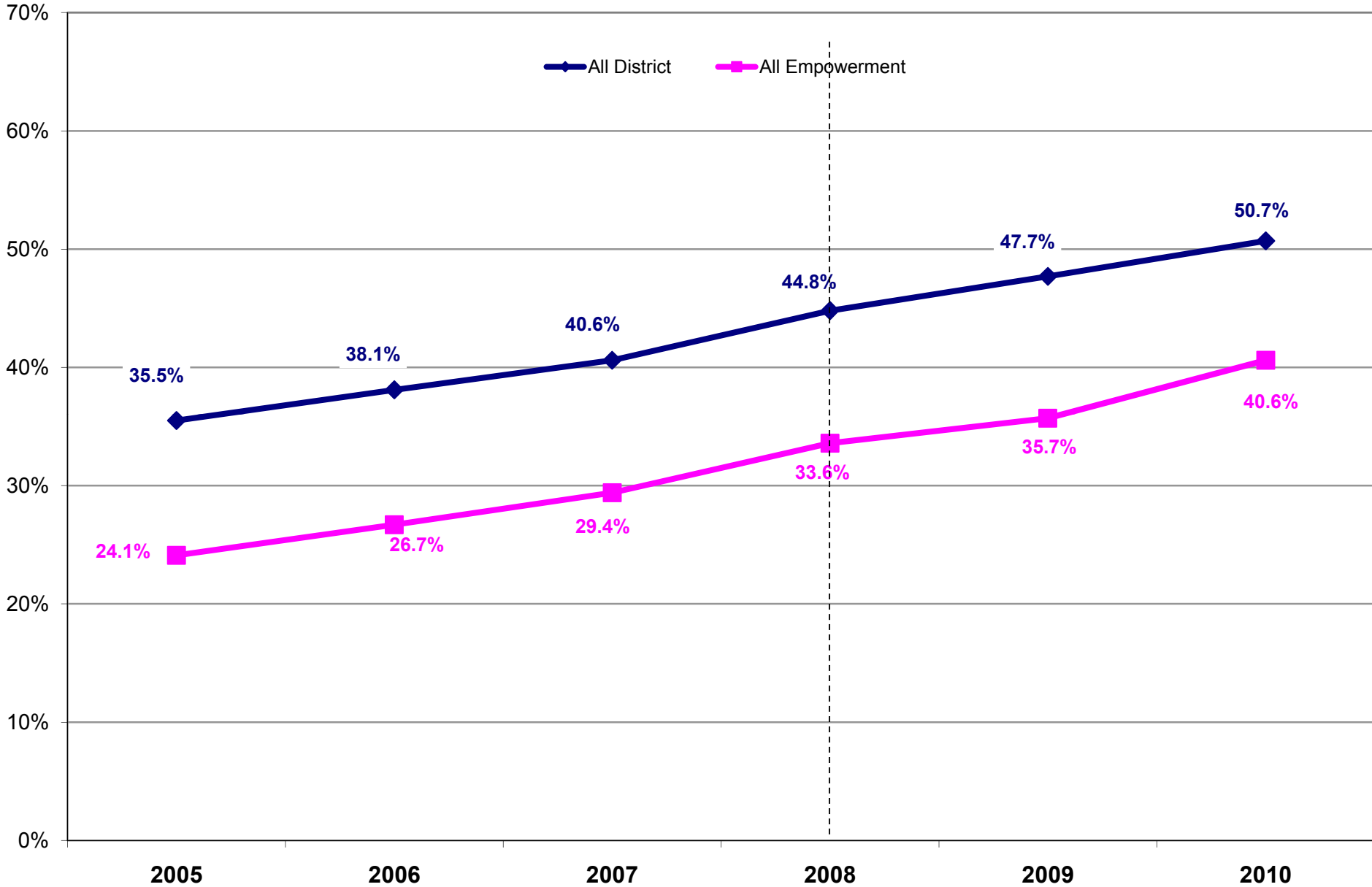


School District of Philadelphia
2002–2010 PSSA Results

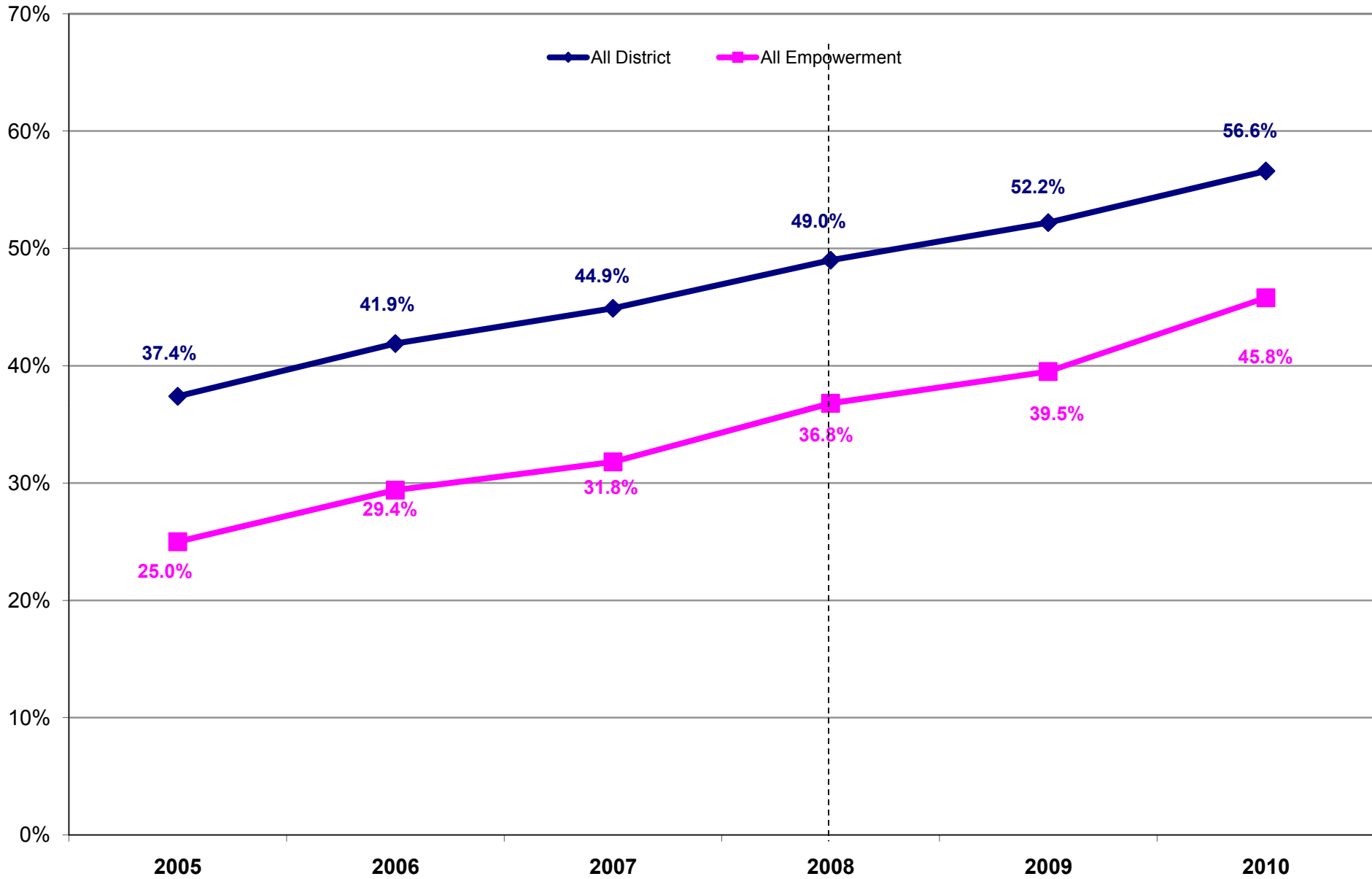
Percentage of Students Advanced or Proficient — Comparison by Group
All Grades Combined - Math



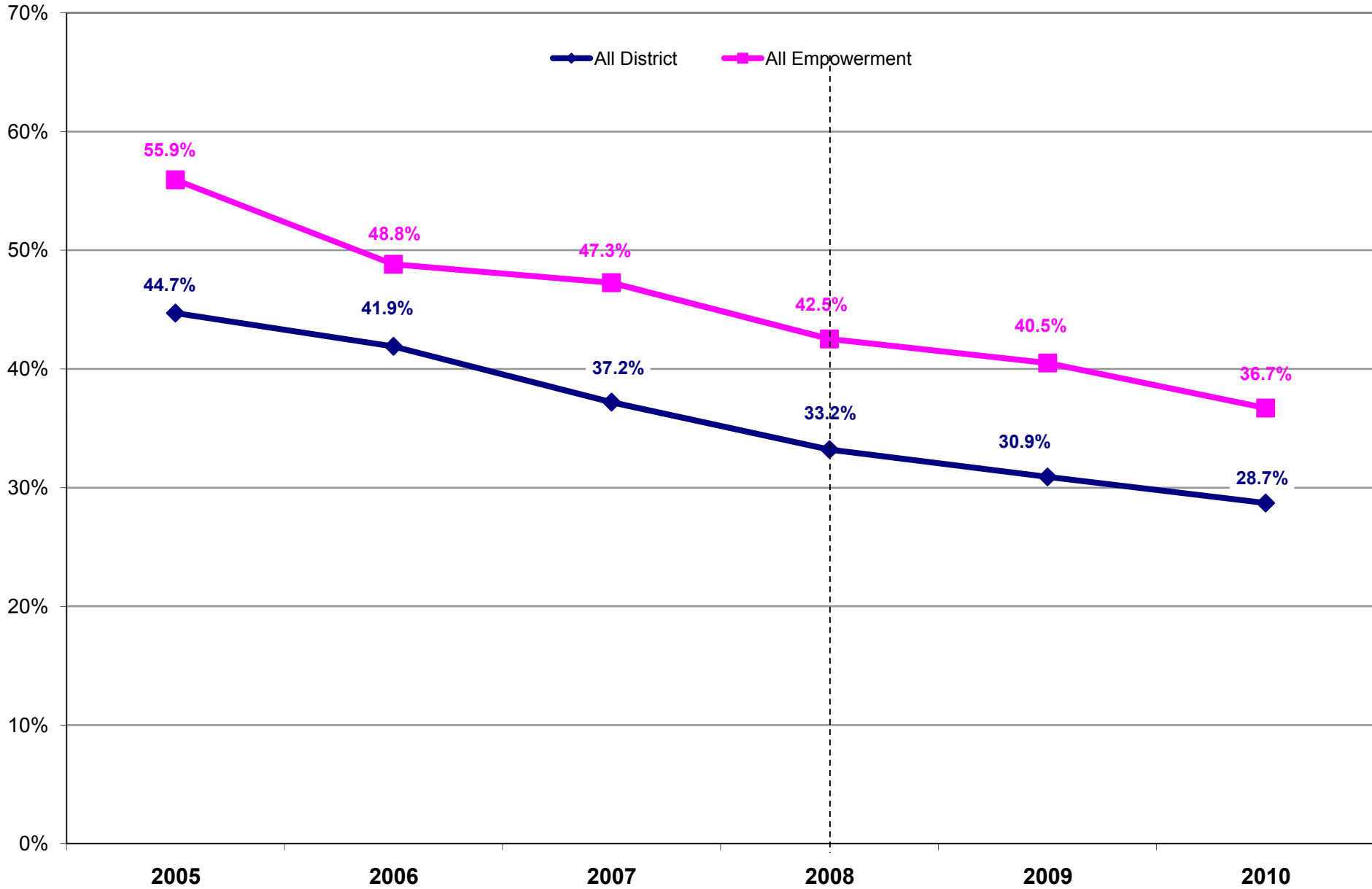
School District of Philadelphia
2005-2010 PSSA Results
Percentage of Students Advanced or Proficient
EMPOWERMENT SCHOOLS
Reading



School District of Philadelphia
2005-2010 PSSA Results
Percentage of Students Advanced or Proficient
EMPOWERMENT SCHOOLS
Math



School District of Philadelphia
2005-2010 PSSA Results
Percentage of Students Below Basic
EMPOWERMENT SCHOOLS
Reading



School District of Philadelphia
2005-2010 PSSA Results
Percentage of Students Below Basic
EMPOWERMENT SCHOOLS
Math

