

School District of Philadelphia 2008 PSSA Results



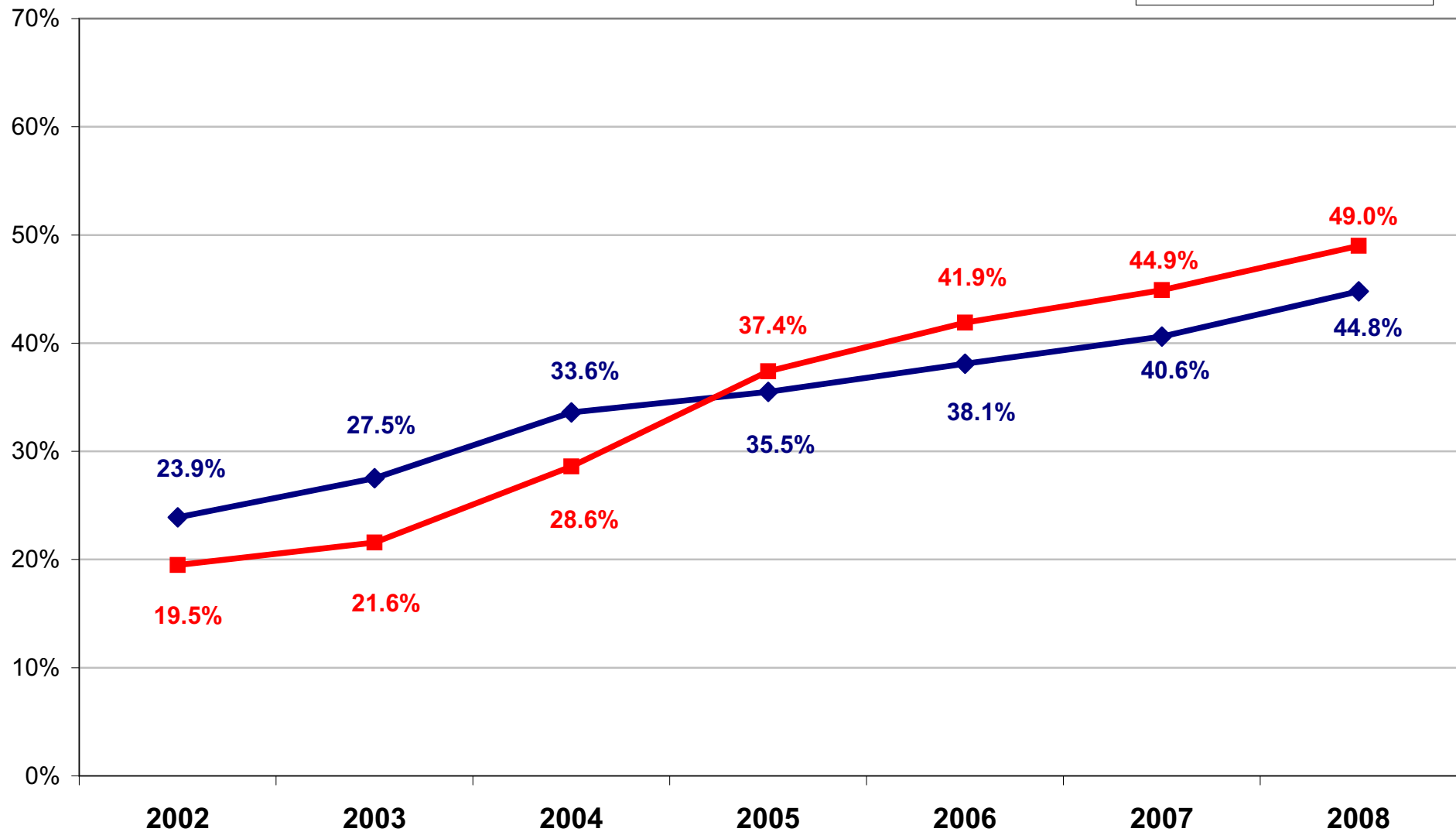
Preliminary Report — June 30, 2008

School District of Philadelphia
2002-2008 PSSA Results
Percentage of Students Advanced or Proficient
All Grades Combined

Chart 1

*Initially grades 5, 8 & 11. Grade 3 added in 2006; grades 4, 6, 7 added in 2007.

◆ Reading ■ Math



PSSA Results by Grade

Chart 2

Percentage of Students Advanced or Proficient

| Reading | | | | | | | | |
|----------|-------|-------|-------|-------|-------|-------|-------|------------|
| | 2002 | 2003 | 2004 | 2005 | 2006 | 2007 | 2008 | '07 to '08 |
| Grade 3 | | | | 37.0% | 42.0% | 46.4% | 51.6% | 5.2% |
| Grade 4 | | | | | 36.1% | 42.8% | 42.8% | 0.0% |
| Grade 5 | 20.8% | 23.4% | 31.6% | 35.1% | 31.6% | 32.0% | 36.2% | 4.2% |
| Grade 6 | | | | | 35.6% | 36.7% | 40.3% | 3.6% |
| Grade 7 | | | | | 39.4% | 40.7% | 47.6% | 6.9% |
| Grade 8 | 24.1% | 30.4% | 41.2% | 39.6% | 44.5% | 49.2% | 55.5% | 6.3% |
| Grade 11 | 28.7% | 30.1% | 27.0% | 30.6% | 33.1% | 34.9% | 37.4% | 2.5% |
| TOTAL | 23.9% | 27.5% | 33.6% | 35.5% | 38.1% | 40.6% | 44.8% | 4.2% |

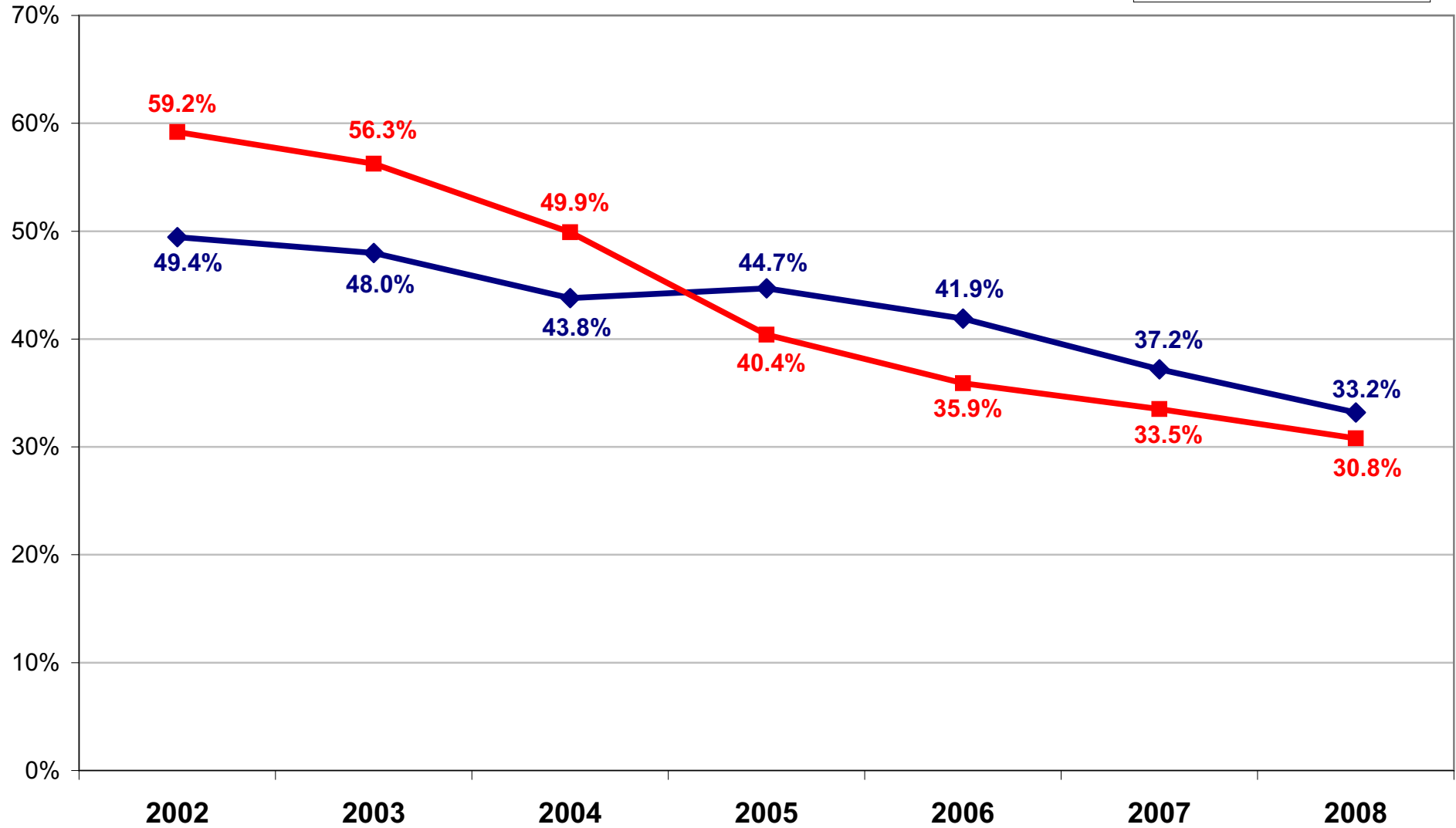
| Math | | | | | | | | |
|----------|-------|-------|-------|-------|-------|-------|-------|------------|
| | 2002 | 2003 | 2004 | 2005 | 2006 | 2007 | 2008 | '07 to '08 |
| Grade 3 | | | | 52.0% | 59.0% | 52.2% | 55.1% | 2.9% |
| Grade 4 | | | | | 51.3% | 52.9% | 55.0% | 2.1% |
| Grade 5 | 18.7% | 23.1% | 30.7% | 45.8% | 41.6% | 44.6% | 49.6% | 5.0% |
| Grade 6 | | | | | 40.6% | 46.8% | 49.7% | 2.9% |
| Grade 7 | | | | | 39.4% | 40.1% | 48.3% | 8.2% |
| Grade 8 | 17.9% | 19.7% | 30.9% | 39.4% | 37.0% | 43.9% | 48.7% | 4.8% |
| Grade 11 | 23.6% | 21.6% | 22.9% | 23.1% | 26.9% | 30.9% | 32.6% | 1.7% |
| TOTAL | 19.5% | 21.6% | 28.6% | 37.4% | 41.9% | 44.9% | 49.0% | 4.1% |

School District of Philadelphia
2002-2008 PSSA Results
Percentage of Students *Below Basic*
All Grades Combined

Chart 3

*Initially grades 5, 8 & 11. Grade 3 added in 2006; grades 4, 6, 7 added in 2007.

Reading Math



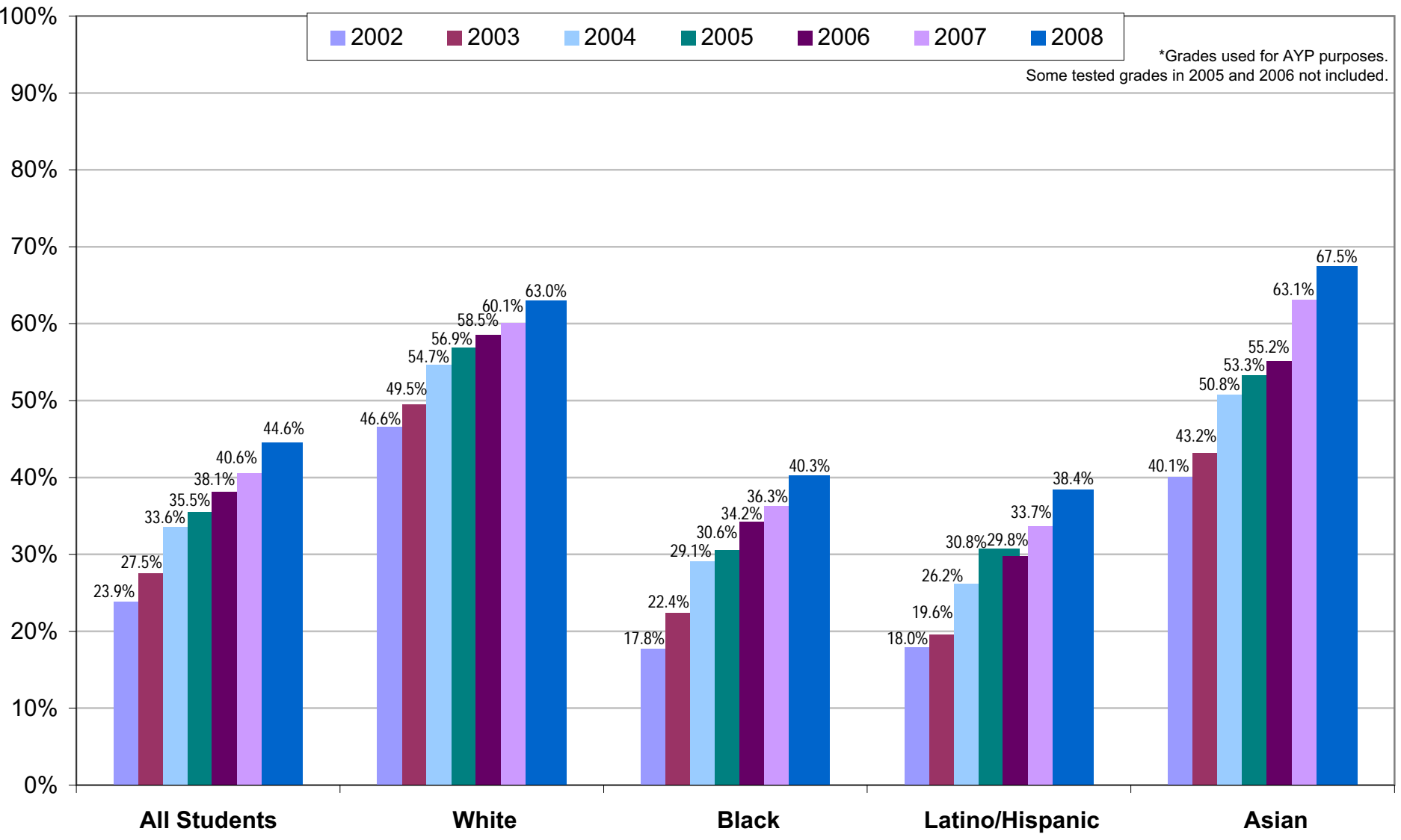
PSSA Results by Grade

Percentage of Students Below Basic

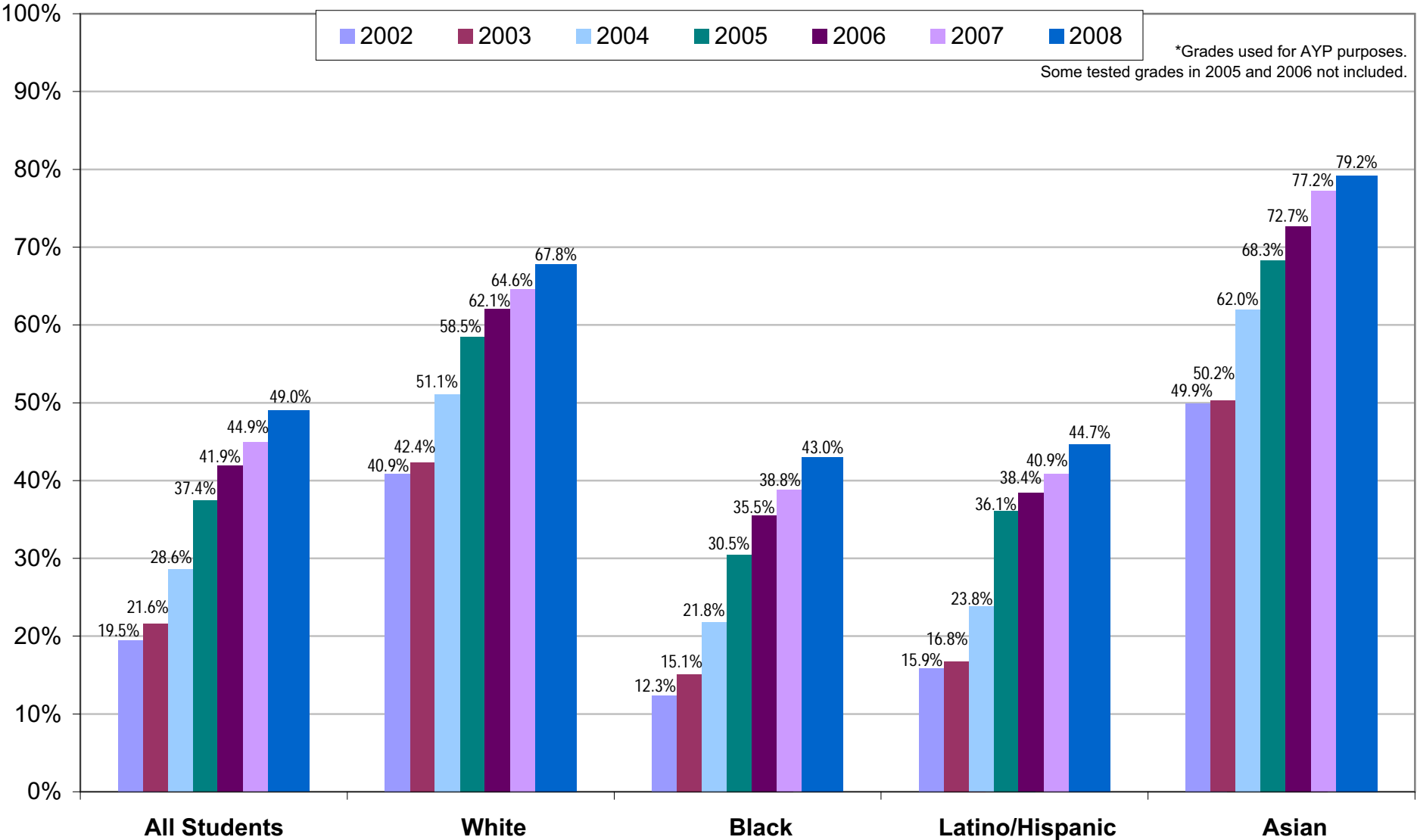
| Reading | | | | | | | | |
|----------------|--------------|--------------|--------------|--------------|--------------|--------------|--------------|-------------------|
| | 2002 | 2003 | 2004 | 2005 | 2006 | 2007 | 2008 | '07 to '08 |
| Grade 3 | | | | 41.0% | 38.0% | 34.4% | 29.8% | -4.6% |
| Grade 4 | | | | | 38.6% | 35.4% | 31.7% | -3.7% |
| Grade 5 | 52.0% | 52.3% | 44.0% | 43.2% | 46.7% | 45.4% | 40.5% | -4.9% |
| Grade 6 | | | | | 38.3% | 37.4% | 35.1% | -2.3% |
| Grade 7 | | | | | 34.5% | 35.0% | 28.8% | -6.2% |
| Grade 8 | 49.0% | 42.3% | 35.9% | 39.2% | 35.7% | 29.8% | 27.3% | -2.5% |
| Grade 11 | 46.0% | 49.4% | 53.4% | 54.5% | 47.2% | 45.5% | 41.5% | -4.0% |
| TOTAL | 49.4% | 48.0% | 43.8% | 44.7% | 41.9% | 37.2% | 33.2% | -4.0% |

| Math | | | | | | | | |
|--------------|--------------|--------------|--------------|--------------|--------------|--------------|--------------|-------------------|
| | 2002 | 2003 | 2004 | 2005 | 2006 | 2007 | 2008 | '07 to '08 |
| Grade 3 | | | | 25.0% | 21.0% | 19.6% | 19.2% | -0.4% |
| Grade 4 | | | | | 31.9% | 31.1% | 31.1% | 0.0% |
| Grade 5 | 59.0% | 54.0% | 48.0% | 28.4% | 31.9% | 32.1% | 25.7% | -6.4% |
| Grade 6 | | | | | 35.7% | 30.7% | 31.0% | 0.3% |
| Grade 7 | | | | | 37.4% | 39.1% | 30.3% | -8.8% |
| Grade 8 | 61.0% | 56.5% | 43.5% | 38.5% | 39.4% | 35.1% | 32.0% | -3.1% |
| Grade 11 | 56.0% | 59.8% | 60.4% | 59.7% | 59.2% | 50.6% | 51.6% | 1.0% |
| TOTAL | 59.2% | 56.3% | 49.9% | 40.4% | 35.9% | 33.5% | 30.8% | -2.7% |

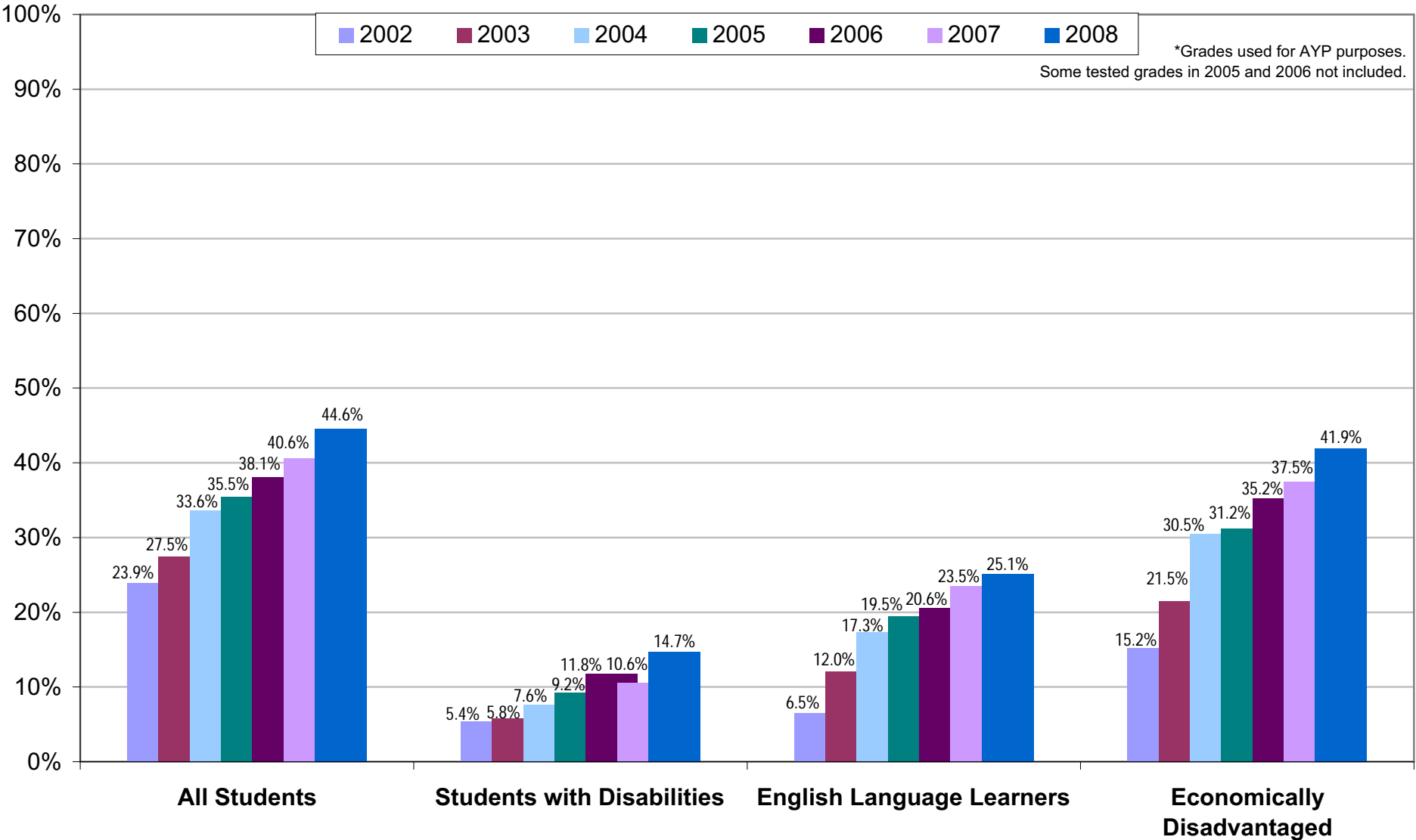
Percentage of Students Advanced or Proficient — Comparison by Group
All Grades Combined
Reading



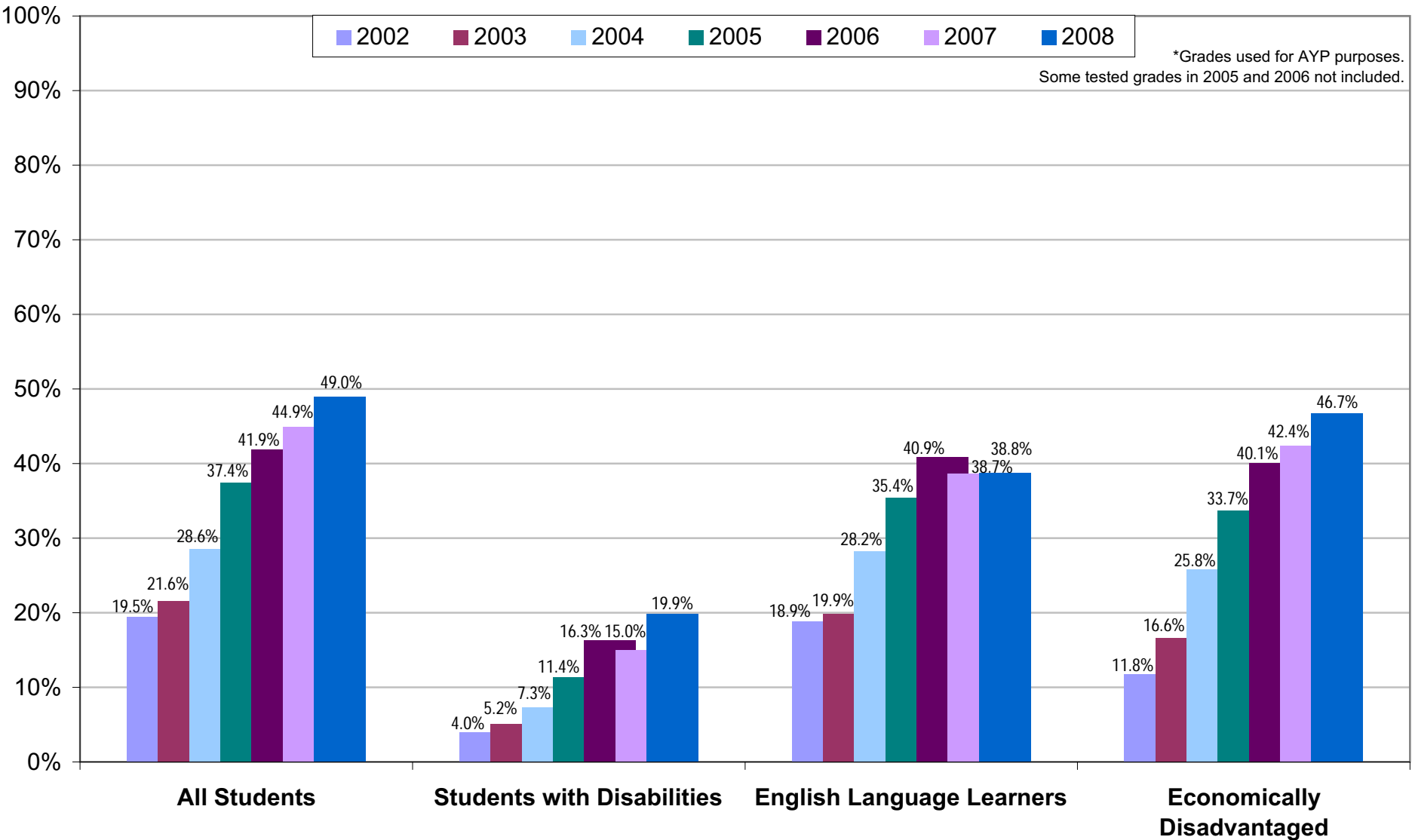
Percentage of Students Advanced or Proficient — Comparison by Group
All Grades Combined
Math



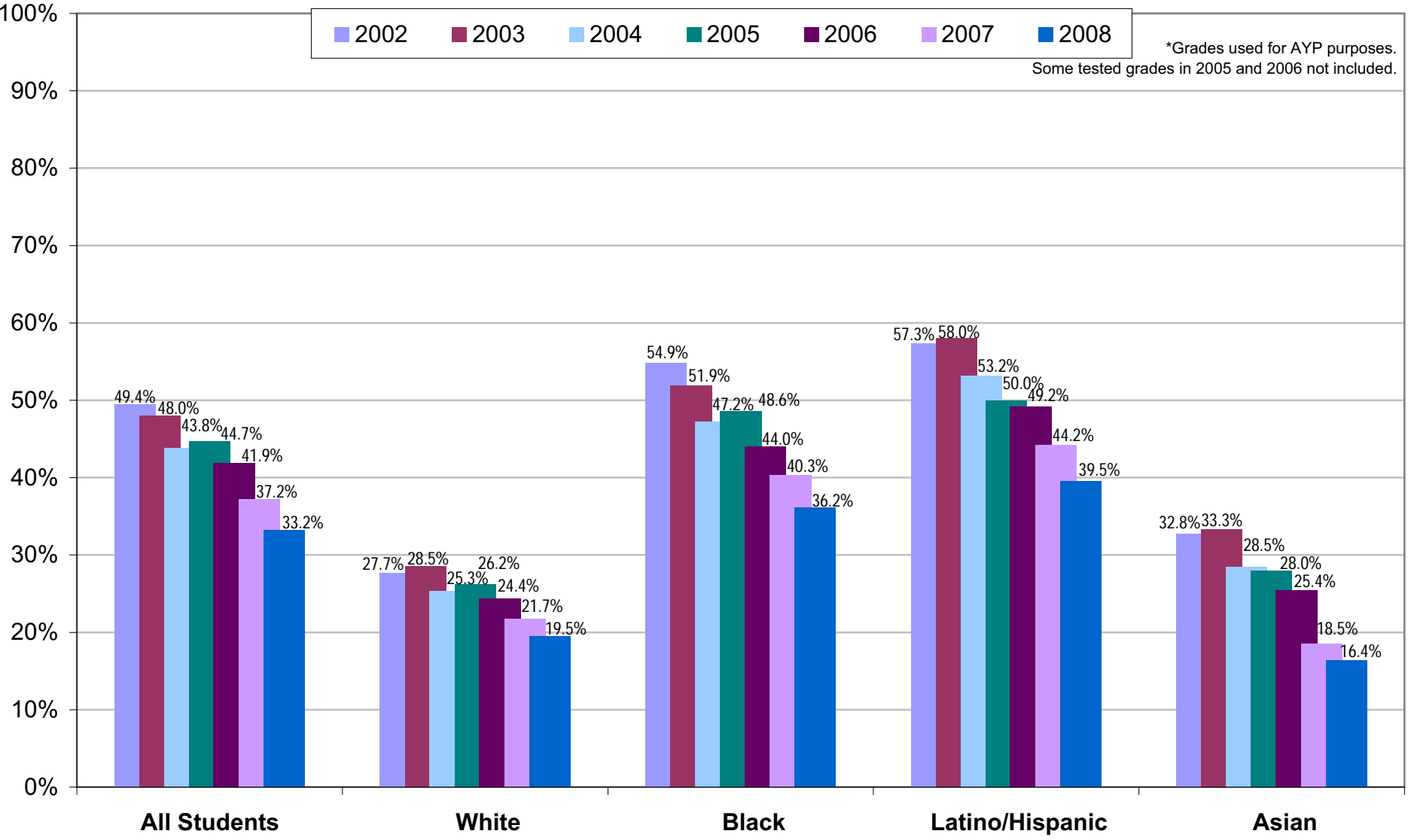
Percentage of Students Advanced or Proficient — Comparison by Group
All Grades Combined
Reading



Percentage of Students Advanced or Proficient — Comparison by Group
All Grades Combined
Math

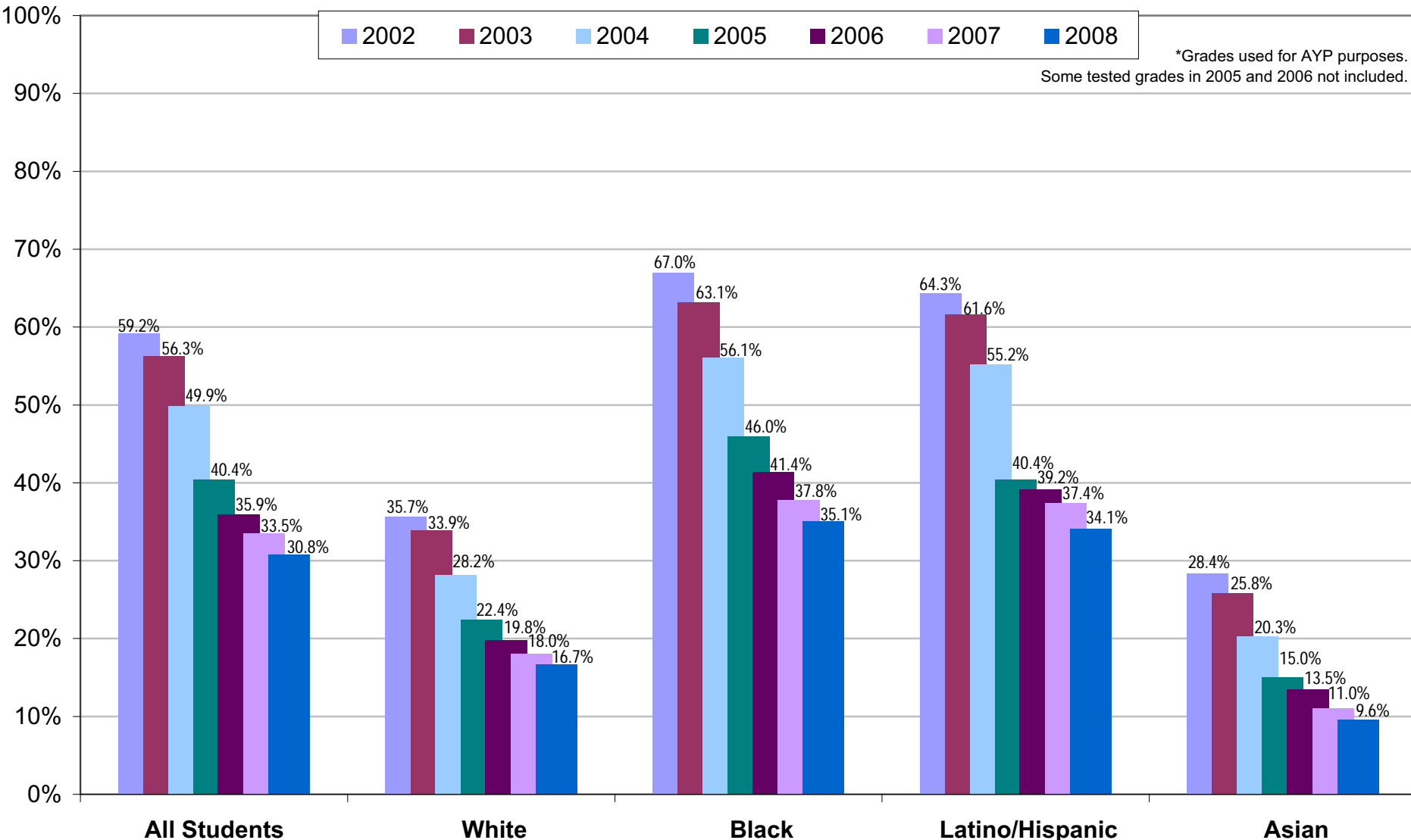


School District of Philadelphia
 2002–2008 PSSA Results
Percentage of Students Below Basic — Comparison by Group
All Grades Combined
Reading

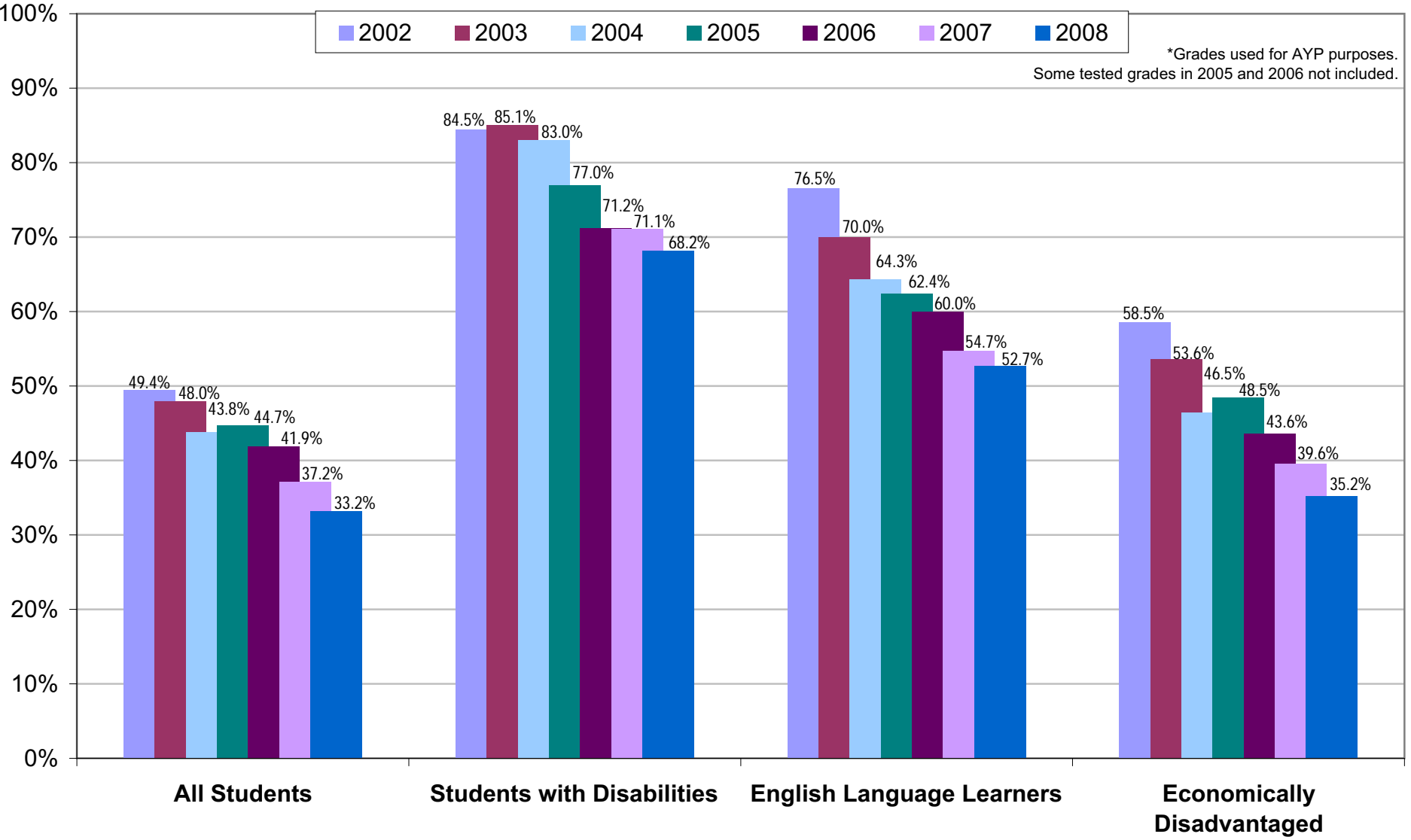


School District of Philadelphia
 2002–2008 PSSA Results
Percentage of Students Below Basic — Comparison by Group
All Grades Combined
Math

*Grades used for AYP purposes.
 Some tested grades in 2005 and 2006 not included.



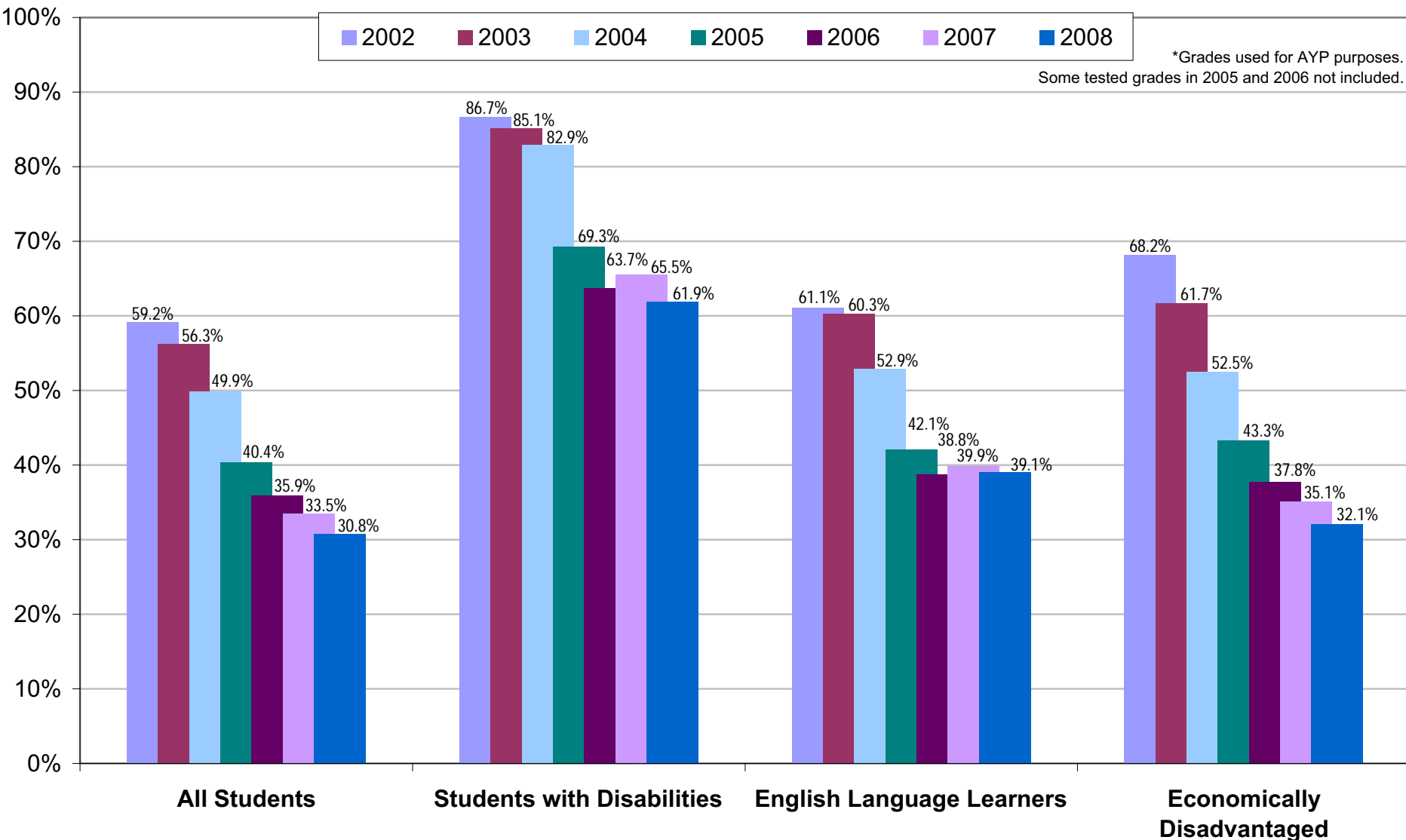
Percentage of Students Below Basic — Comparison by Group
All Grades Combined
Reading



School District of Philadelphia
2002–2008 PSSA Results

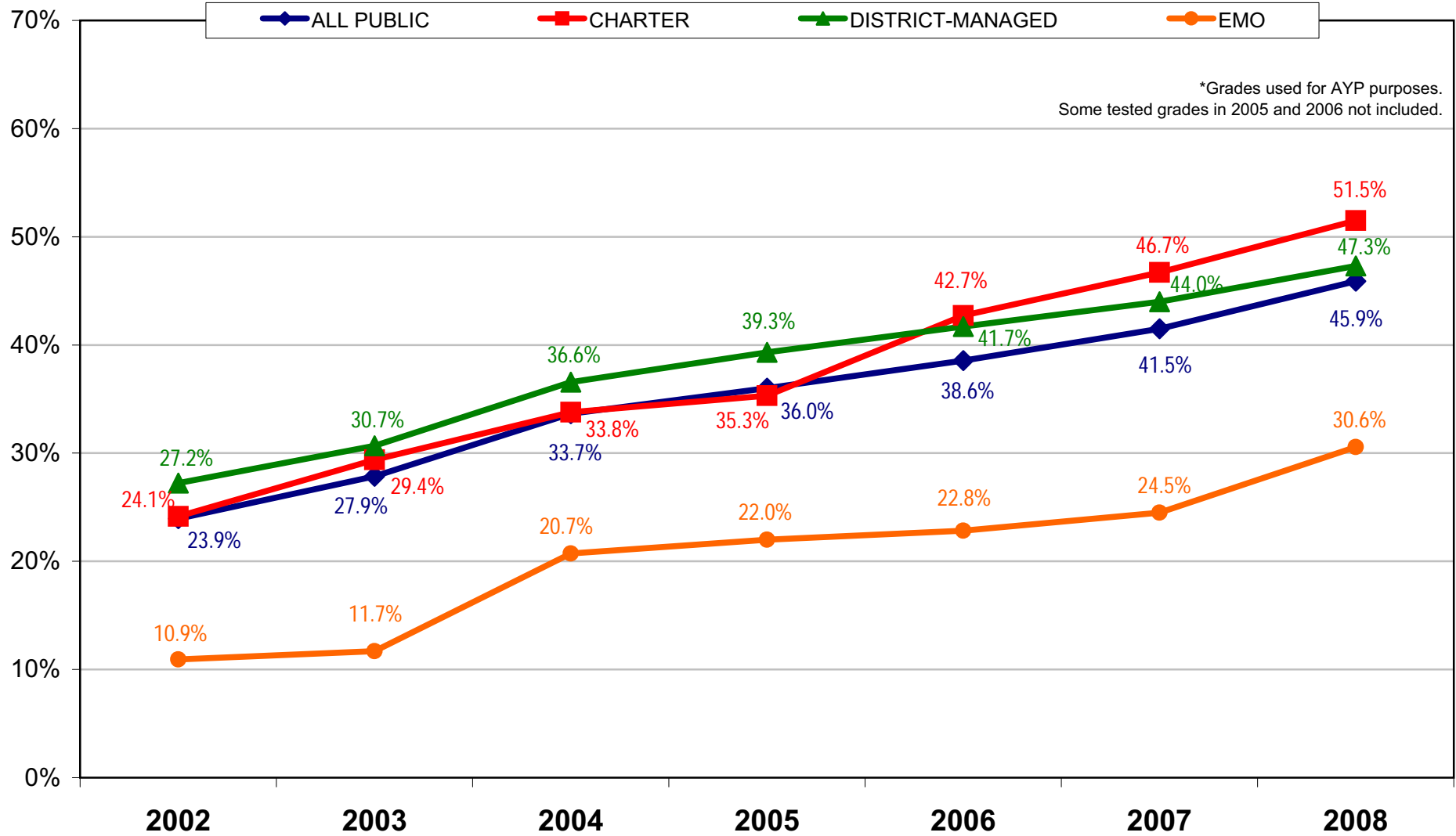
Percentage of Students Below Basic — Comparison by Group
All Grades Combined
Math

*Grades used for AYP purposes.
Some tested grades in 2005 and 2006 not included.



Public School Students in Philadelphia
2002–2008 PSSA Results by Management Type
All Grades Combined
Reading

Percentage of students Advanced or Proficient

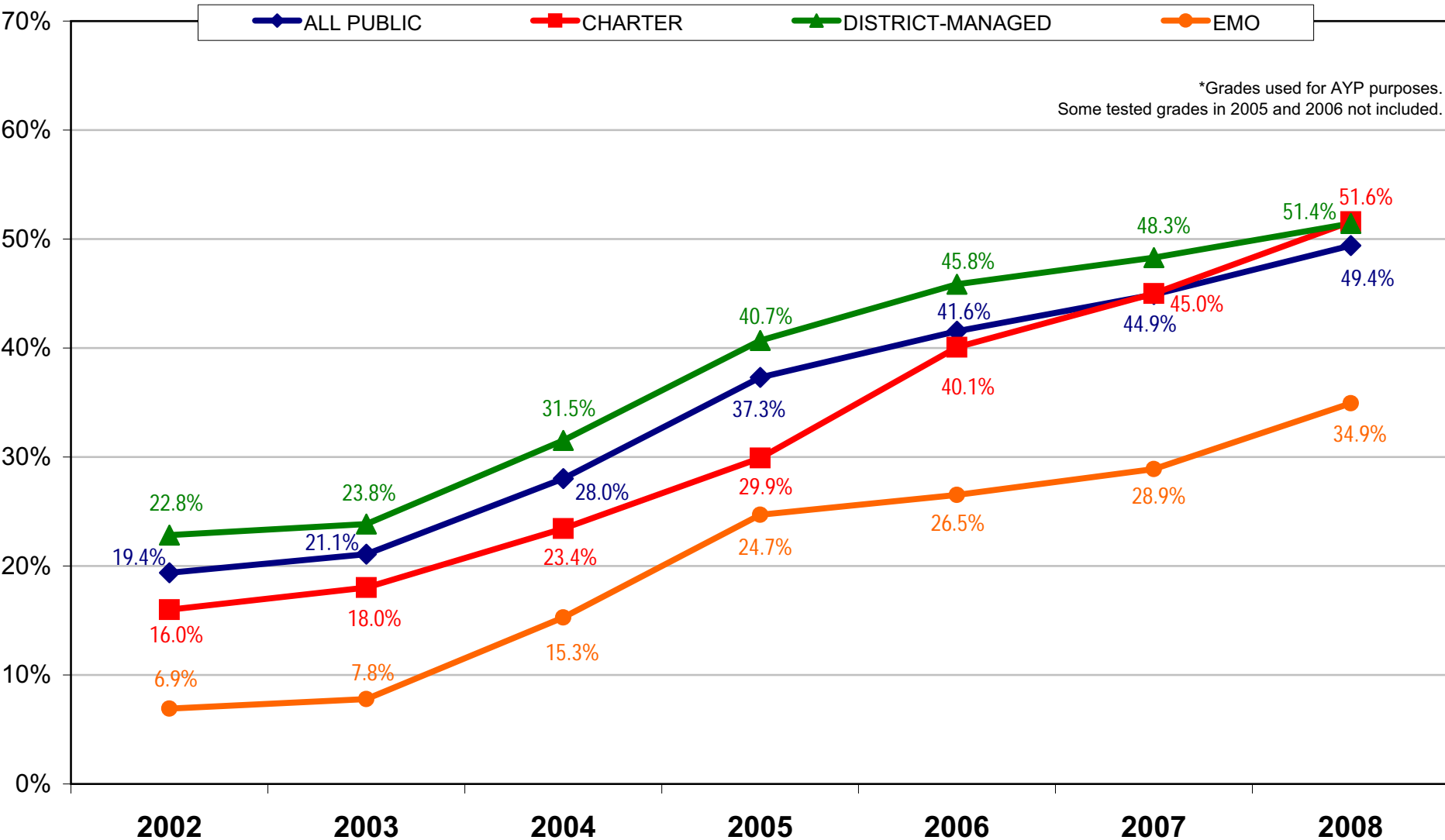


**Public School Students in Philadelphia
2002–2008 PSSA Results by Management Type
All Grades Combined
Math**

Percentage of students Advanced or Proficient

*Grades used for AYP purposes.

Some tested grades in 2005 and 2006 not included.



PSSA Reading

Percentage of Students Advanced or Proficient

| | Combined | | | | | | | | |
|------------------|----------|-------|-------|-------|-------|-------|-------|--------------|--------------|
| | 2002 | 2003 | 2004 | 2005 | 2006 | 2007 | 2008 | Change 02-08 | Change 07-08 |
| ALL PUBLIC | 23.9% | 27.9% | 33.7% | 36.0% | 38.6% | 41.5% | 45.9% | 22.0% | 4.4% |
| CHARTER SCHOOLS | 24.1% | 29.4% | 33.8% | 35.3% | 42.7% | 46.7% | 51.5% | 27.4% | 4.8% |
| DISTRICT-MANAGED | 27.2% | 30.7% | 36.6% | 39.3% | 41.7% | 44.0% | 47.3% | 20.1% | 3.3% |
| ALL E.M.O.s | 10.9% | 11.7% | 20.7% | 22.0% | 22.8% | 24.5% | 30.6% | 19.6% | 6.1% |

PSSA Math

Percentage of Students Advanced or Proficient

| | Combined | | | | | | | | |
|------------------|----------|-------|-------|-------|-------|-------|-------|--------------|--------------|
| | 2002 | 2003 | 2004 | 2005 | 2006 | 2007 | 2008 | Change 02-08 | Change 07-08 |
| ALL PUBLIC | 19.4% | 21.1% | 28.0% | 37.3% | 41.6% | 44.9% | 49.4% | 30.0% | 4.5% |
| CHARTER SCHOOLS | 16.0% | 18.0% | 23.4% | 29.9% | 40.1% | 45.0% | 51.6% | 35.6% | 6.6% |
| DISTRICT-MANAGED | 22.8% | 23.8% | 31.5% | 40.7% | 45.8% | 48.3% | 51.4% | 28.6% | 3.1% |
| ALL E.M.O.s | 6.9% | 7.8% | 15.3% | 24.7% | 26.5% | 28.9% | 34.9% | 28.0% | 6.0% |

- 'ALL PUBLIC' includes all District-managed, EMO-managed and charter schools
- 'CHARTER' includes all charter schools