

SCHOOL & LOCATION
Commodore John Barry Elementary School
5900 Race Street, Philadelphia PA 19139

PROJECT TITLE
NEW CONSTRUCTION

DRAWING TITLE
FOURTH FLOOR PLAN

APPROVED BY
FIRE PROTECTION

SCHOOL DISTRICT OF PHILADELPHIA
THE SCHOOL REFORM COMMISSION

DEPARTMENT OF DESIGN AND CONSTRUCTION SERVICES

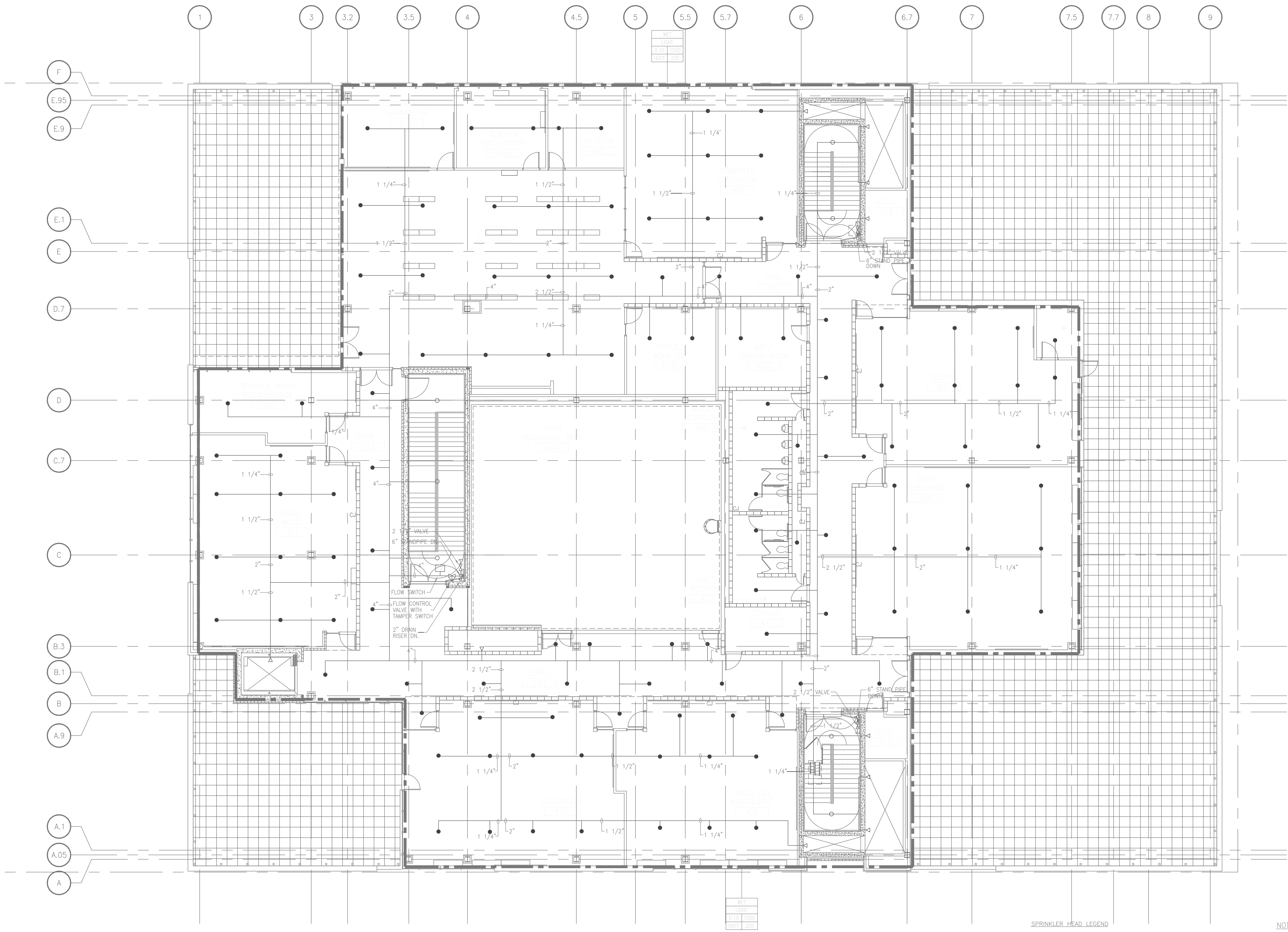
1401 N. 3RD STREET
PHILADELPHIA, PA 19103
(215) 400-0730 FAX (215) 400-0731

CONTRACTOR TO VERIFY ALL CONDITIONS AND DIMENSIONS AT SITE

NO.	DATE	REVISION
9		
8		
7		
6		
5		
4		
3		
2		
1		

SPEC. NO. B-840C of 2005/06	DATE 12/29/06
SCALE AS NOTED	LOCATION NO. 120
DRAWN BY LPM	TYPE NO. -
CHECKED BY	FILE NO. -

DRAWING NO.
FP104



1 FOURTH FLOOR PLAN - FIRE PROTECTION
SCALE: 1/8" = 1'-0"

- SPRINKLER HEAD LEGEND
- RECESSED PENDENT HEAD (LIGHT HAZARD)
 - UPRIGHT OR EXPOSED PENDENT HEAD (LIGHT AND ORDINARY COVERAGE)
 - ▷ SIDEWALL PENDENT HEAD (LIGHT AND ORDINARY COVERAGE)

- NOTES:
- REFER TO DRAWING FP000 FOR GENERAL NOTES.
 - REFER TO DRAWING FP000 FOR SPRINKLER CRITERIA SCHEDULE.
 - SPRINKLER SYSTEM SHALL DRAIN TO JANITOR CLOSET ON THIS FLOOR.
 - PROVIDE INSPECTOR'S TEST STATION AS REQUIRED BY CODE.
 - REFER TO ARCHITECT'S REFLECTED CEILING PLAN FOR CEILING TYPES AND HEIGHTS.
 - ALL PIPE SIZES NOT SHOWN SHOULD BE 1".