

BLOCK PLAN  
SCALE 1/8" = 1'-0"

1. EXISTING GRADE SHOWN IN CIRCLES THIS 00.00
2. FOR ALL NEW CONSTRUCTION SPECIFICATIONS OF ALL
3. GRANITE SPLASH COURSE TO CARRY UP TO TOP OF ALL
4. LOCATIONS OF NEW CONSTRUCTION UNLESS OTHERWISE NOTED
5. BE VERIFIED BEFORE GATES, TREES AND DRUGS ARE
6. LOCATIONS OF NEW CONSTRUCTION UNLESS OTHERWISE NOTED
7. SPACES MARKED 'N' ARE A-C' FOR NEW TREES
8. SEE DETAIL OF 8" CEMENT CURB FOR NEW TREES
9. ALL TREES INCLUDING STUMPS AND ROOTS SHALL BE REMOVED
10. EXISTING TREES ON LOT 175 BE REMOVED ARE NOT SHOWN

NEW PUBLIC SCHOOL BUILDING  
FOR THE  
SCHOOL DISTRICT OF PHILADELPHIA  
PENNSYLVANIA

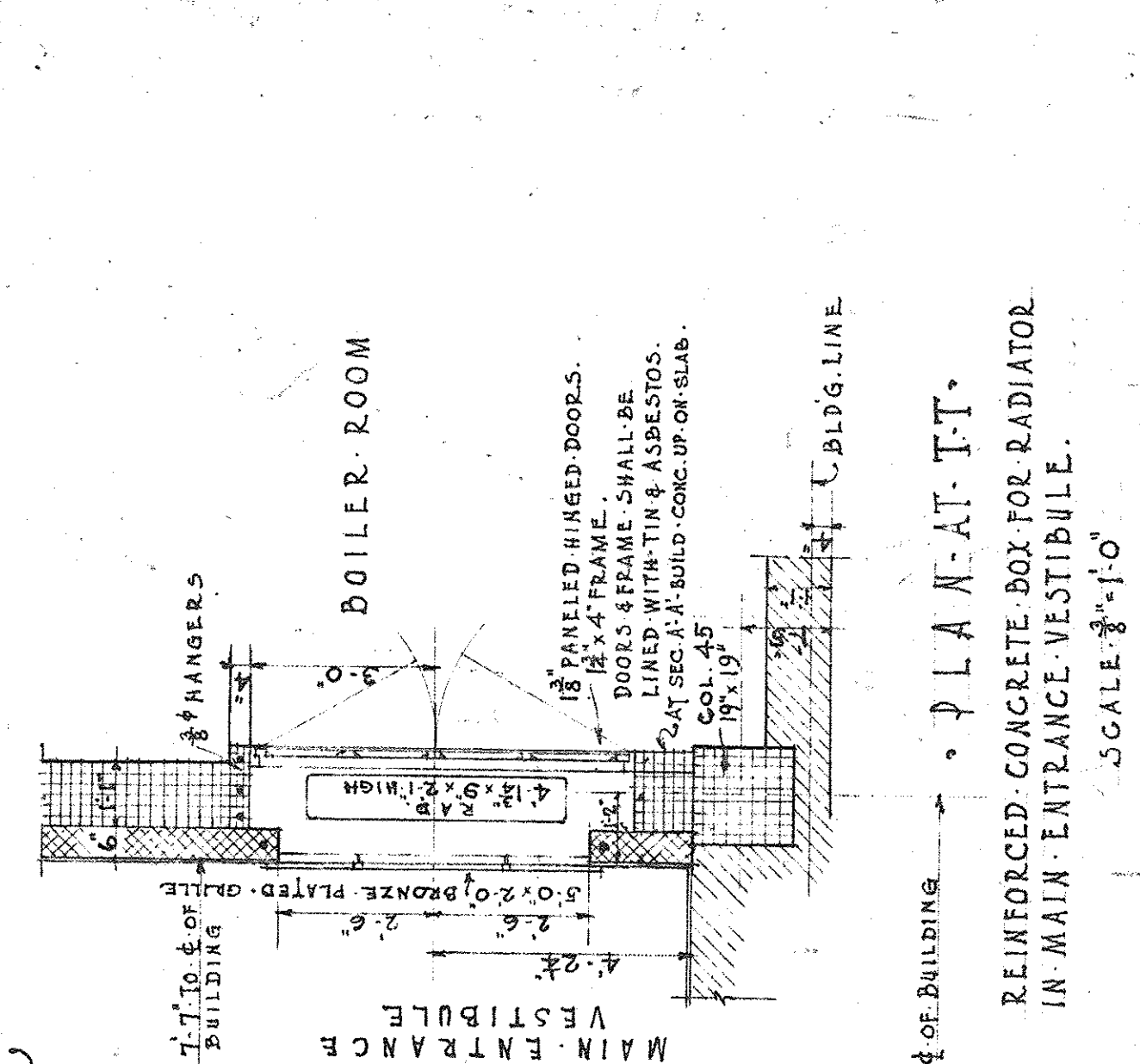
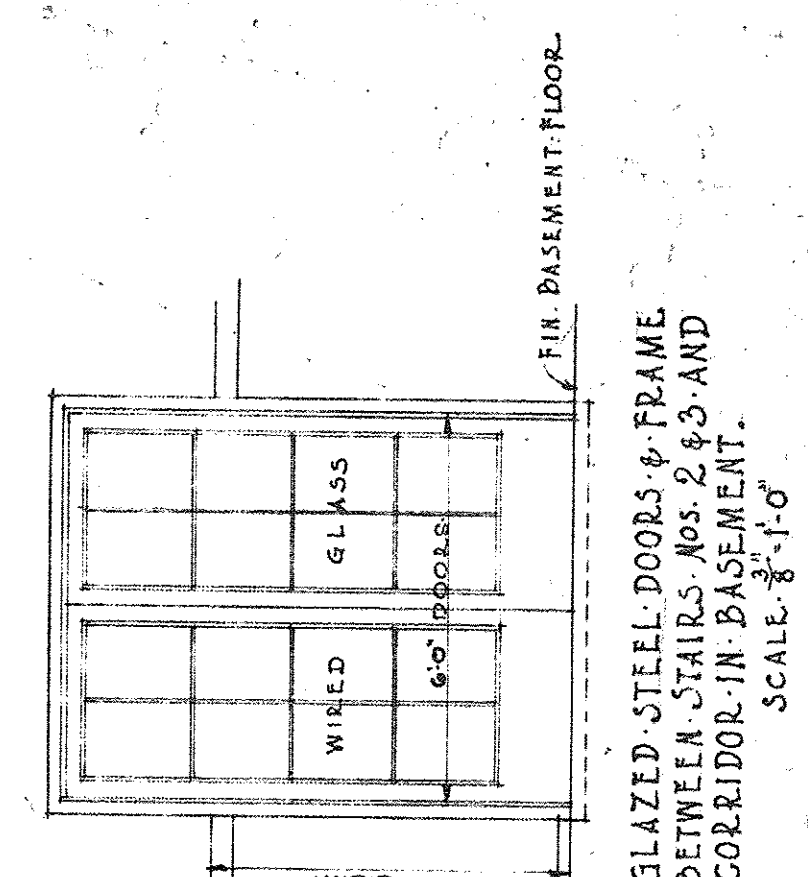
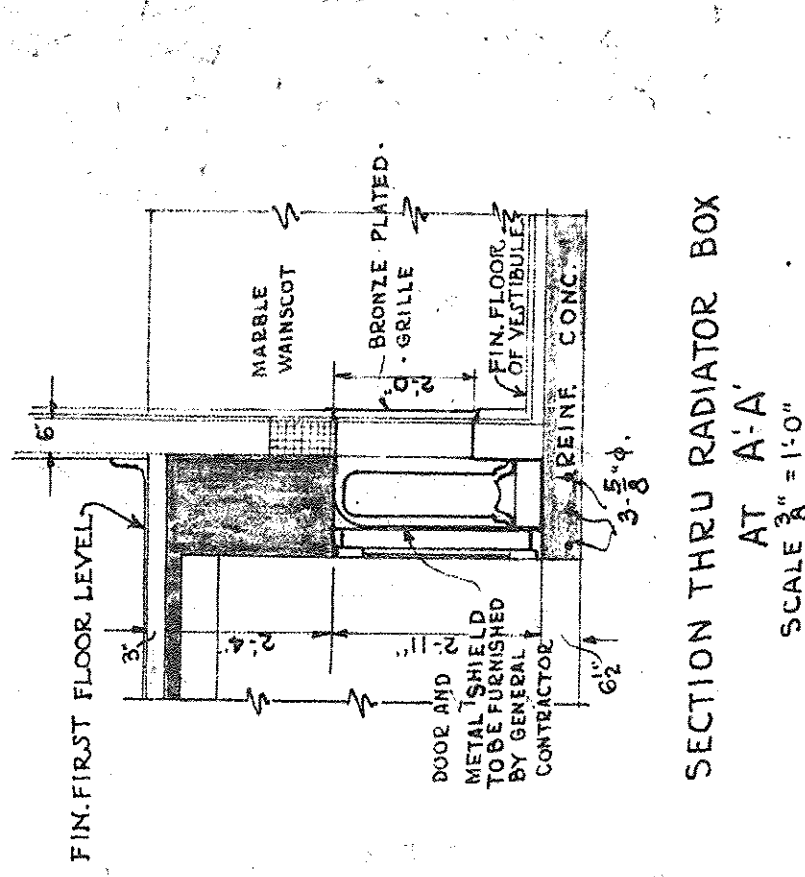
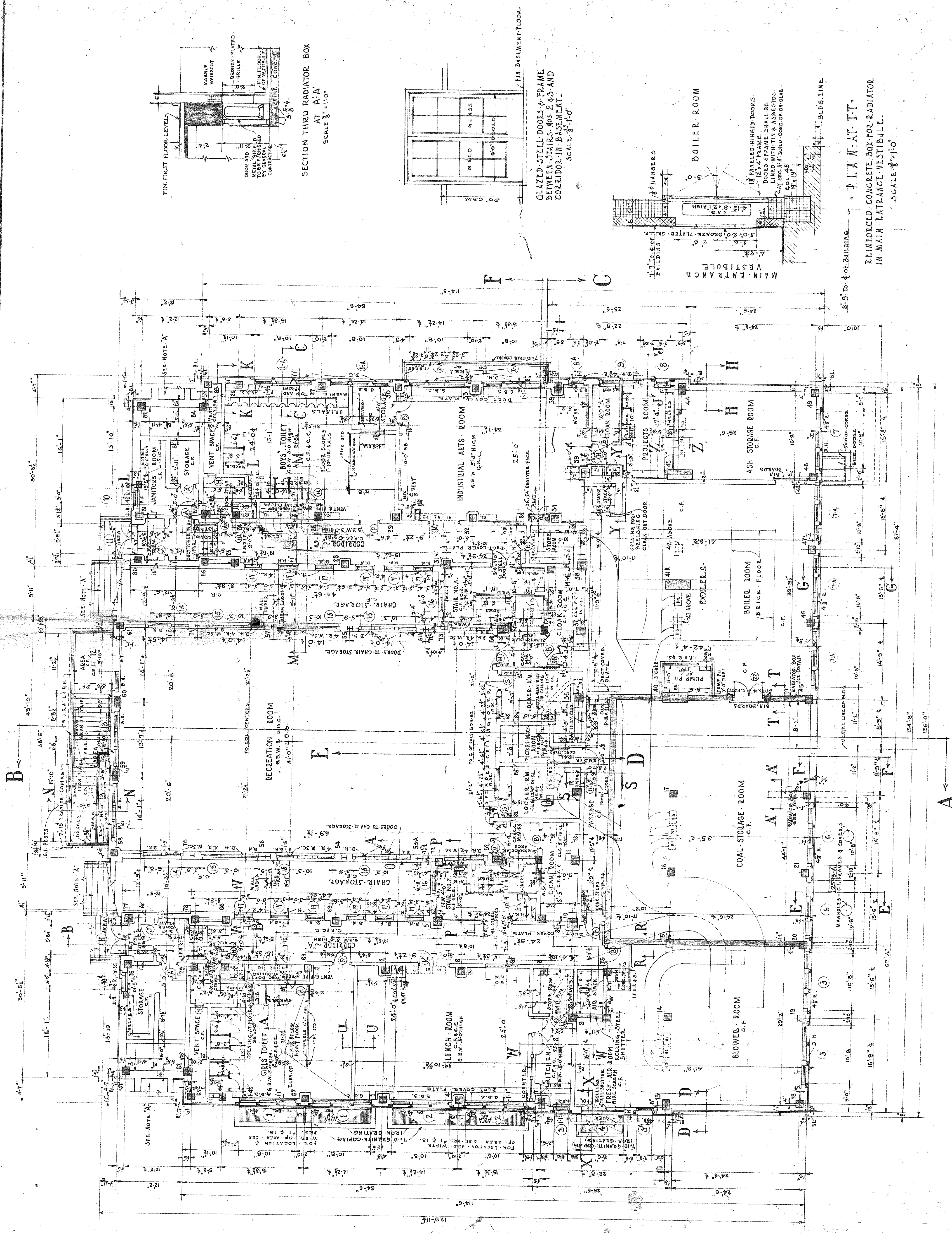
FINAL CHECKED APRIL 10, 1928.

PREPARED IN THE OFFICE OF THE  
SUPERINTENDENT OF BUILDINGS  
OF THE  
BOARD OF PUBLIC EDUCATION  
SCHOOL DISTRICT OF PHILADELPHIA  
NINETEENTH STREET ABOVE CHESTNUT  
LAWRENCE E. CATHART, A. ARCHT

BUILDING NUMBER 25-F.  
LOCATION NORTHWEST CORNER ANN AND BELGRADE STREETS.  
SHEET NO. 1  
DRAWN BY WELSH  
CHECKED BY J. J. J. J.  
APPROVAL SIGNATURES  
SUPERINTENDENT OF BUILDINGS  
11/11/28

*Handwritten signatures and notes in a circular stamp.*





BASEMENT PLAN  
SCALE 1/8" = 1'-0"

NEW PUBLIC SCHOOL BUILDING

FOR THE

SCHOOL DISTRICT OF PHILADELPHIA

PENNSYLVANIA

FINAL CHECKED APRIL 10 1928

REPLACING IN THE OFFICE OF THE  
SUPERINTENDENT OF BUILDINGS  
OF THE  
BOARD OF PUBLIC EDUCATION  
SCHOOL DISTRICT OF PHILADELPHIA  
NINETEENTH STREET ABOVE CHESTNUT  
IRWIN T. CATHARINE R. ARCHITECT

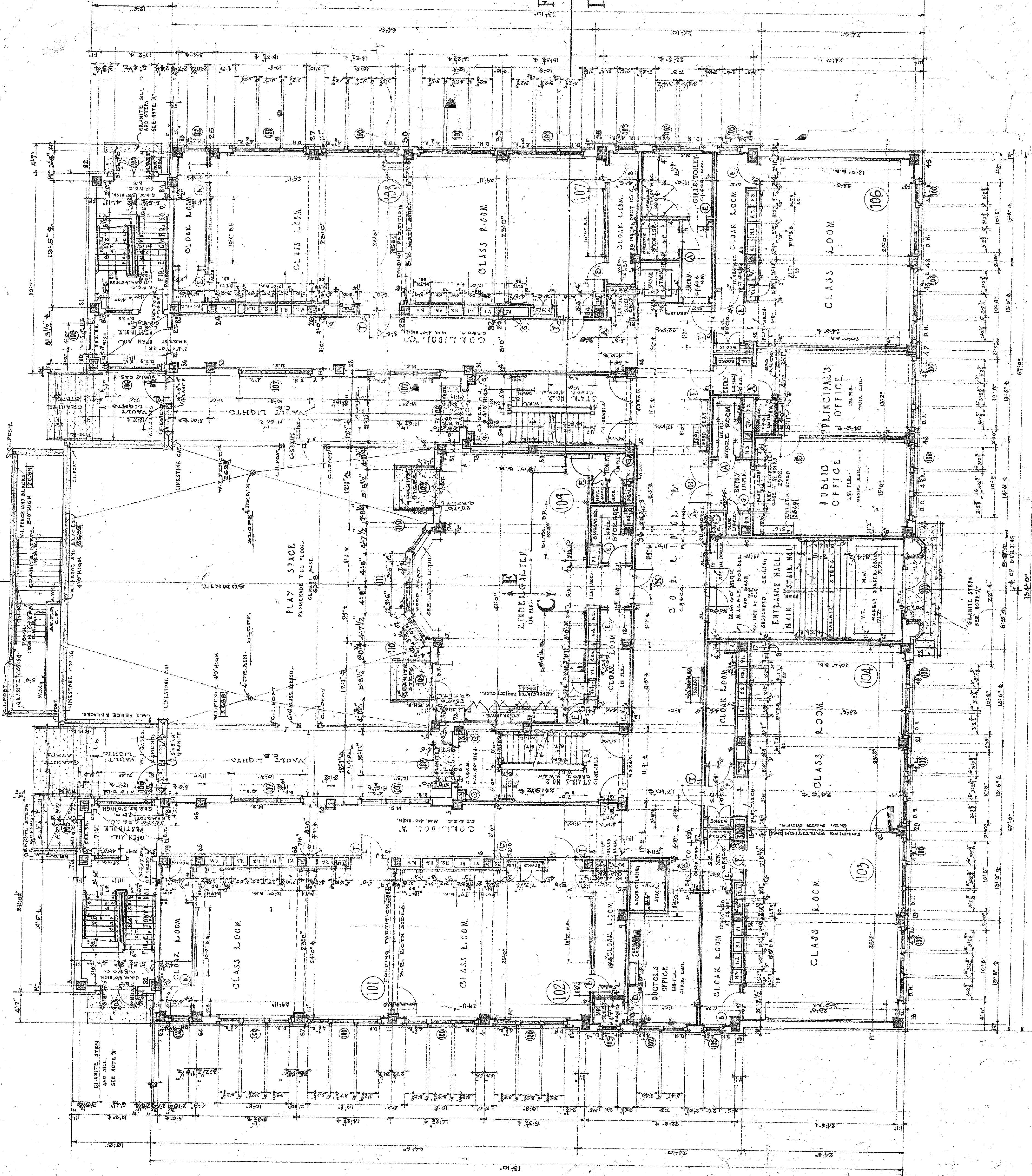
BUILDING NUMBER 25-F  
LOCATION Belmont and Ann St.  
DRAWN BY WEIGH & HINCHMAN  
CHECKED BY *Wm. E. Weber* TRACED BY *Wm. E. Weber*  
APPROVAL SIGNATURES  
SUPERINTENDENT OF BUILDINGS *Wm. E. Weber* 9/1/28  
SUPERINTENDENT OF SCHOOLS *E. C. B. Brown* 9/1/28

TYPE 153

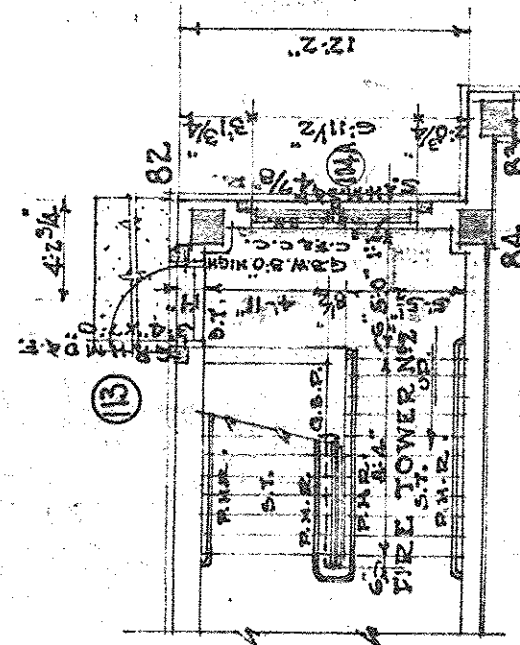
4

*Wm. E. Weber*  
Architect





PLAN OF FIRE TOWER. N92.  
WITH EXIT AT REAR.  
NOTE: SEE BLOCK PLAN SHEET NO. 1  
& ELEV. SHEET NO. 12.



**\*FINAL-CHECKED-APRIL 10, 1978\***

AS FURNISHED IN THE OFFICE OF THE  
**SUPERINTENDENT OF BUILDINGS**  
OF THE  
**BOARD OF PUBLIC EDUCATION**  
SCHOOL DISTRICT OF PHILADELPHIA  
NINETEENTH STREET ABOVE CHESTNUT  
CITY OF PHILADELPHIA, PENNSYLVANIA

**Bldgs and Apr 10, 1978**

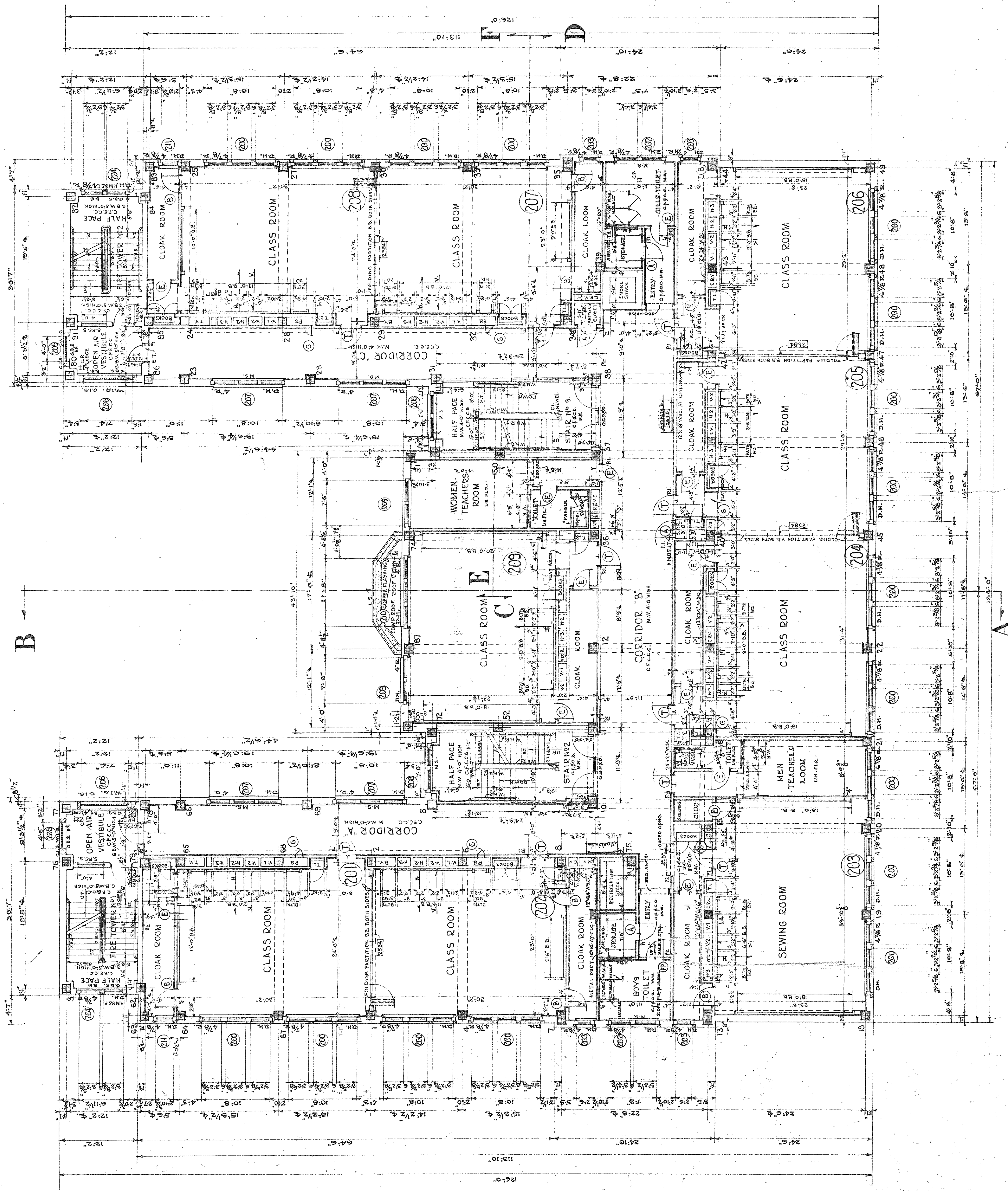
**BUILDING NUMBER**  
**LOCATION**  
**SHEET NO. 3**  
**OWNED BY** *Algonam Water Treated by*  
**APPROVAL** **LITERATURES**  
**SUPERINTENDENT OF BUILDINGS** *John P. Grogan*  
**SUPERINTENDENT OF SCHOOLS** *E. C. Grogan*  
*John P. Grogan*

NOTE "A"  
 FOR NUMBER OF STEPS TO OUTSIDE AREAS AND ENTRANCE  
 SEE ELEVATIONS AND BLOCK PLAN  
 SILLS, PLATFORMS AND STEPS TO BE GRANITE.  
 NUMBERS ENCLOSED THUS 0000 INDICATES THE  
 NUMBER OF THE STANDARD DETAIL USED FOR  
 THAT PORTION OF THE WORK.  
 FOR DETAIL-DRAWING NUMBERS OF NOTES SEE SPEC'S

[illegible]

James C. Cavanaugh Esq  
Architect





SECOND FLOOR PLAN  
SCALE 8'-1"=0'

FOR THE  
NEW PUBLIC SCHOOL BUILDING  
SCHOOL DISTRICT OF PHILADELPHIA  
PENNSYLVANIA

FOR NOTES & INDEX OF MATERIALS SEE  
SHEET NO. 5 & SPECIFICATION

*Amey Carlini*  
Architect

TYPE 153 6

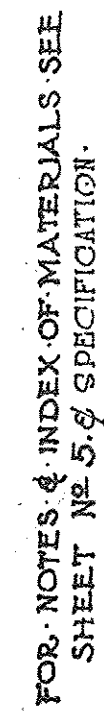
FINAL CHECKED APRIL 10 1928

PREPARED IN THE OFFICE OF THE  
SUPERINTENDENT OF BUILDINGS  
BOARD OF PUBLIC EDUCATION  
SCHOOL DISTRICT OF PHILADELPHIA  
NINETEENTH STREET ABOVE CHESTNUT  
UNION T. CHAMBERLAIN, A. ARCHITECT

BUILDING NUMBER 251 F  
LOCATION Belmont and Run St.  
DRAWN BY PHILADELPHIA  
CHECKED BY *Wm. J. McHugh*  
APPROVED BY *E. C. B. [Signature]*  
SUPERINTENDENT OF BUILDINGS  
APPROVED BY *[Signature]*  
SUPERINTENDENT OF SCHOOLS

*Wm. J. McHugh*  
Architect





James Cochran & Co.  
Agents.

TYPE	153	7
------	-----	---

FINAL CHECKED APR. 11, 1928.

PREPARED IN THE OFFICE OF THE  
SUPERINTENDENT OF BUILDINGS  
OF THE  
BOARD OF PUBLIC EDUCATION  
SCHOOL DISTRICT OF PHILADELPHIA  
NINETEENTH STREET ABOVE CHESTNUT  
IRWIN T. CATHARINE R. A., ARCHITECT

25 - F  
Belgrade and Ann St.  
DRAWN BY: PEOPLES of ALABAMA  
CHECKED BY: *Walter* TRACED BY: PEOPLES of ALABAMA  
APPROVAL SIGNATURES: *John C. Campbell* 9/2/96  
PERMISSENT OF BUILDING: *John C. Campbell* 9/2/96  
PERMISSENT OF SCHOOLS: *E. C. Brown* 9/2/96

Per James Harrison