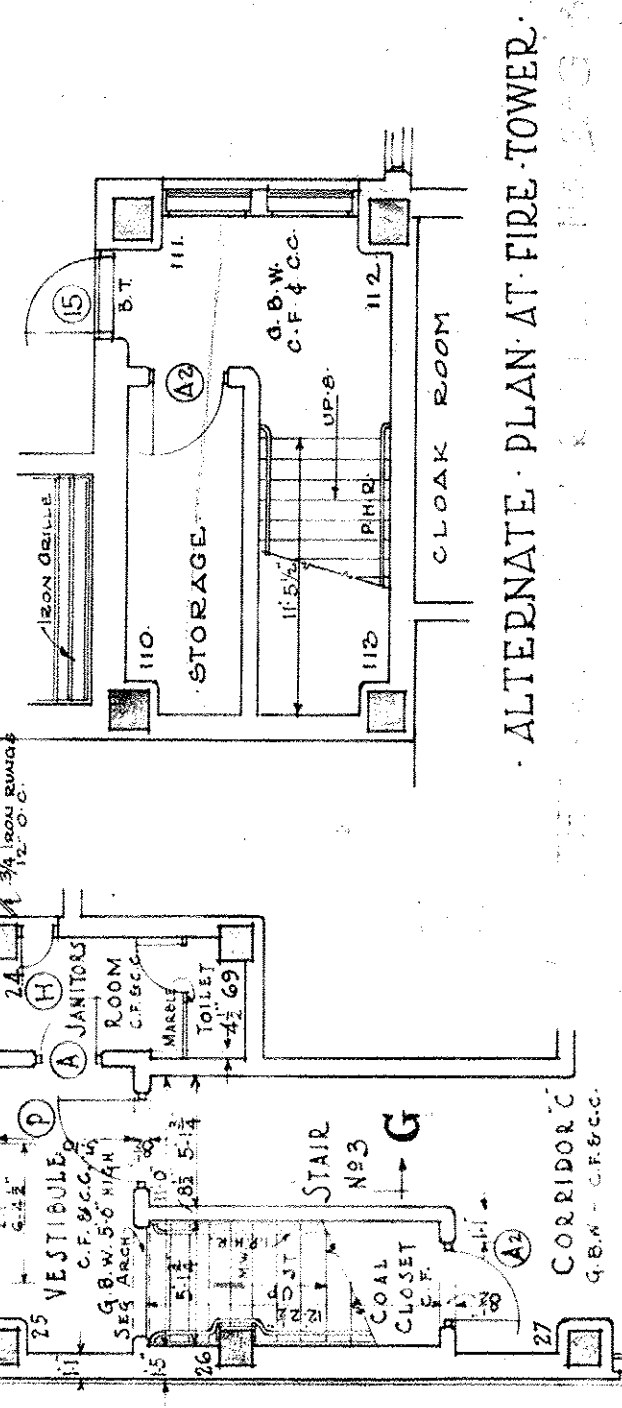
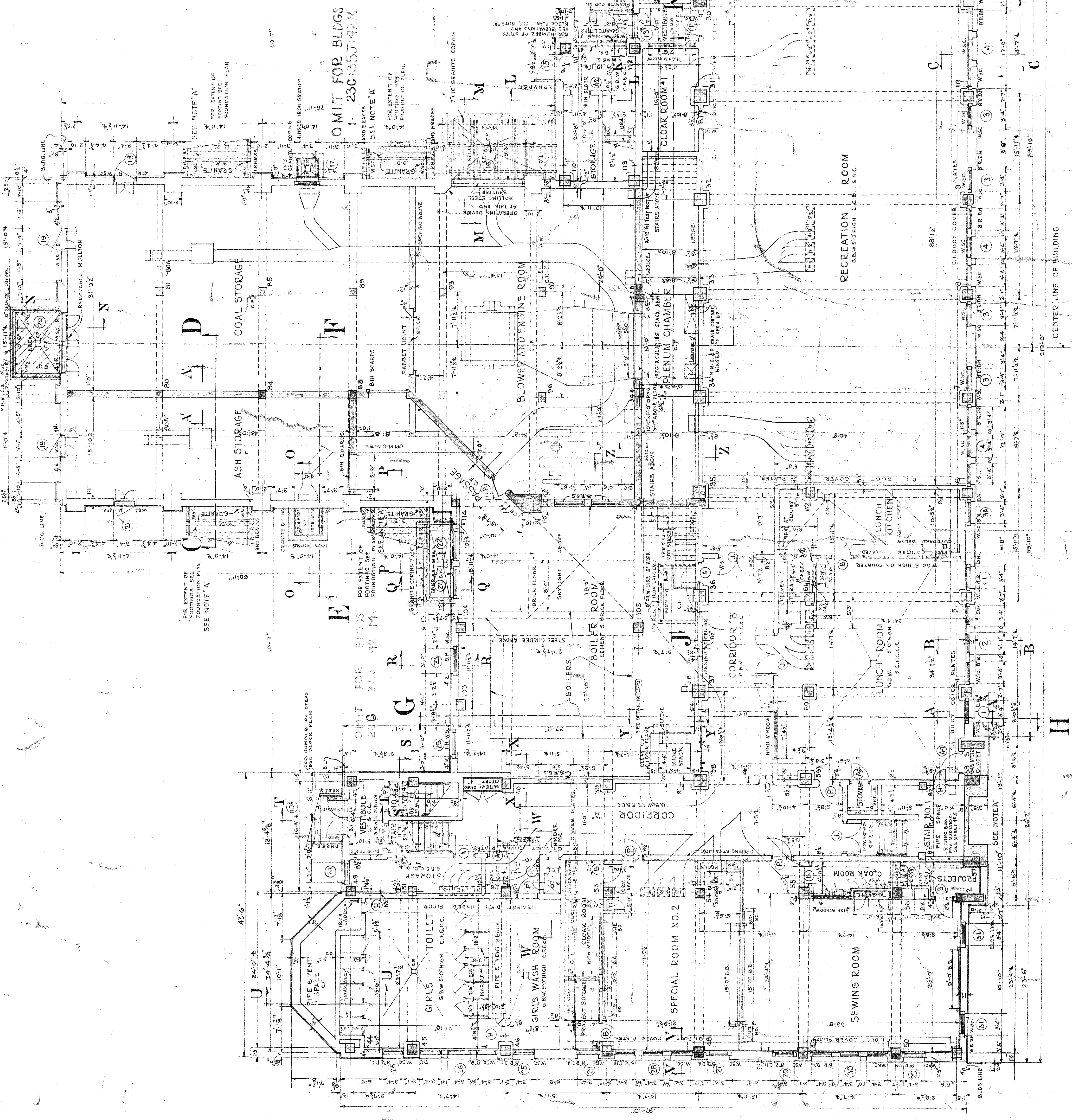


CL OF AUDITORIUM
OMIT FOR BLDG 23G-35J-42M



ALTERNATE PLAN AT FIRE TOWER

ALTERNATE AREA AT STAIR NO. 3

FINAL CHECKED DEC. 11, 1928

APPROVED IN THE OFFICE OF THE
SUPERINTENDENT OF BUILDINGS
BOARD OF PUBLIC EDUCATION
SCHOOL DISTRICT OF PHILADELPHIA
NINETEENTH STREET ABOVE CHESTNUT
IRWIN T. COFFMAN, R. A. ARCHITECT

BUILDING NUMBER
LOCATION
SHEET NO. 4
CHECKED BY
SUPERINTENDENT OF BUILDINGS
SUPERINTENDENT OF SCHOOLS



BASEMENT FLOOR PLAN
SCALE 8"=1 FOOT

NEW PUBLIC SCHOOL BUILDING

FOR THE
SCHOOL DISTRICT OF PHILADELPHIA
PENNSYLVANIA

FOR INDEX OF MATERIALS AND DETAIL
SEE SHEET NO. 1
ALL EXTERIOR GRASS TO HAVE
BLACK PINE & JAIL & TRAVEL
WALLS TO BE CONCRETE & STAINLESS
STEEL