

FINAL CHECKED DEC 11, 1928.

PREPARED IN THE OFFICE OF THE
SUPERINTENDENT OF BUILDINGS
OF THE
BOARD OF PUBLIC EDUCATION
SCHOOL DISTRICT OF PHILADELPHIA
NINETEENTH STREET ABOVE CHESTNUT
IRWIN T. CRAWFORD, R. A. ARCHITECT

BUILDING NUMBER
LOCATION
SHEET No. 9
CHECKED BY
APPROVED SIGNATURES
SUPERINTENDENT OF BUILDINGS
SUPERINTENDENT OF SCHOOLS

DRAWN BY G. L. REEFER,
TRACED BY
DATE

Irwin T. Crawford
R. A. ARCHITECT
FEB - 1929
NEW PUBLIC SCHOOL BUILDING
PHILADELPHIA
PA
JAN 2 1929
J. H. B. B. B.

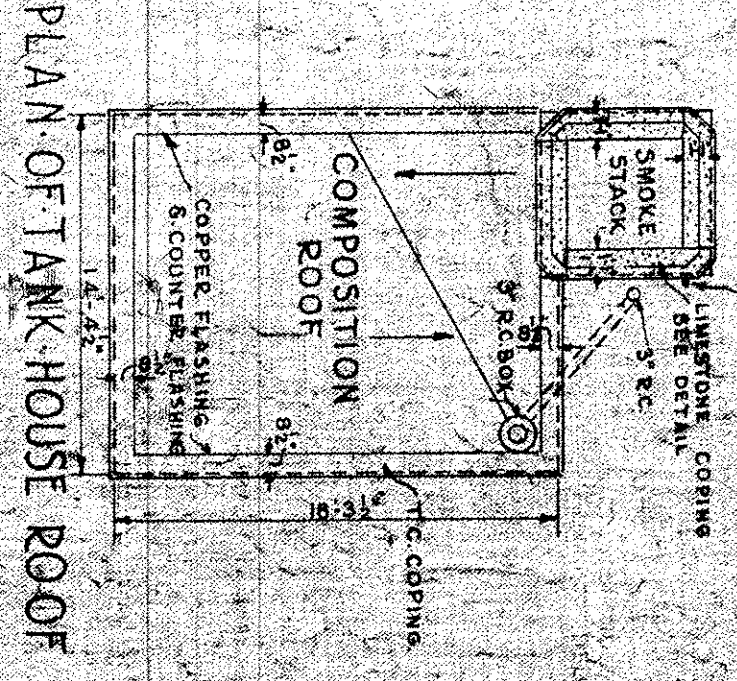
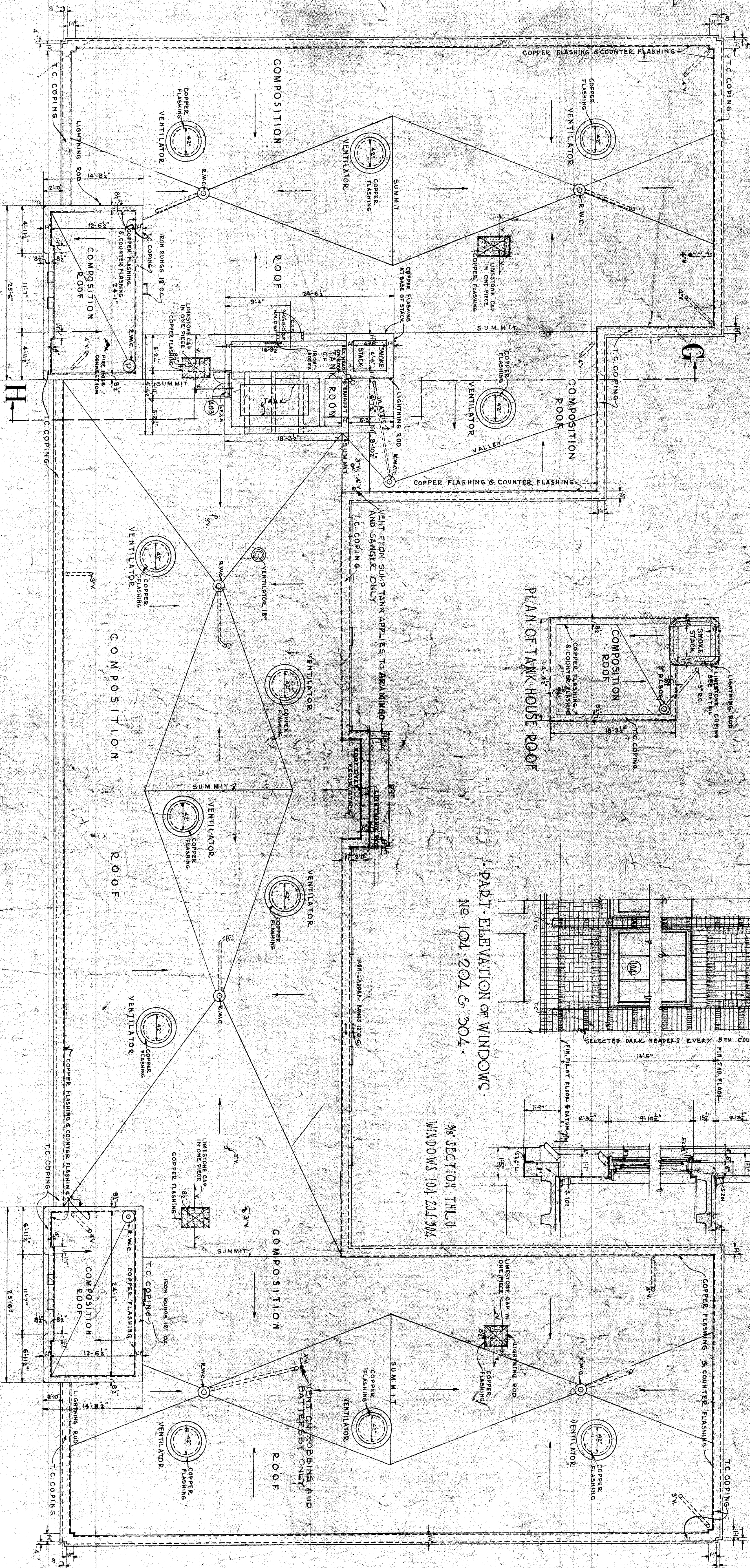
ROOF PLAN
SCALE 1/4" = 1' - 0"

NEW PUBLIC SCHOOL BUILDING
FOR THE
SCHOOL DISTRICT OF PHILADELPHIA
PENNSYLVANIA

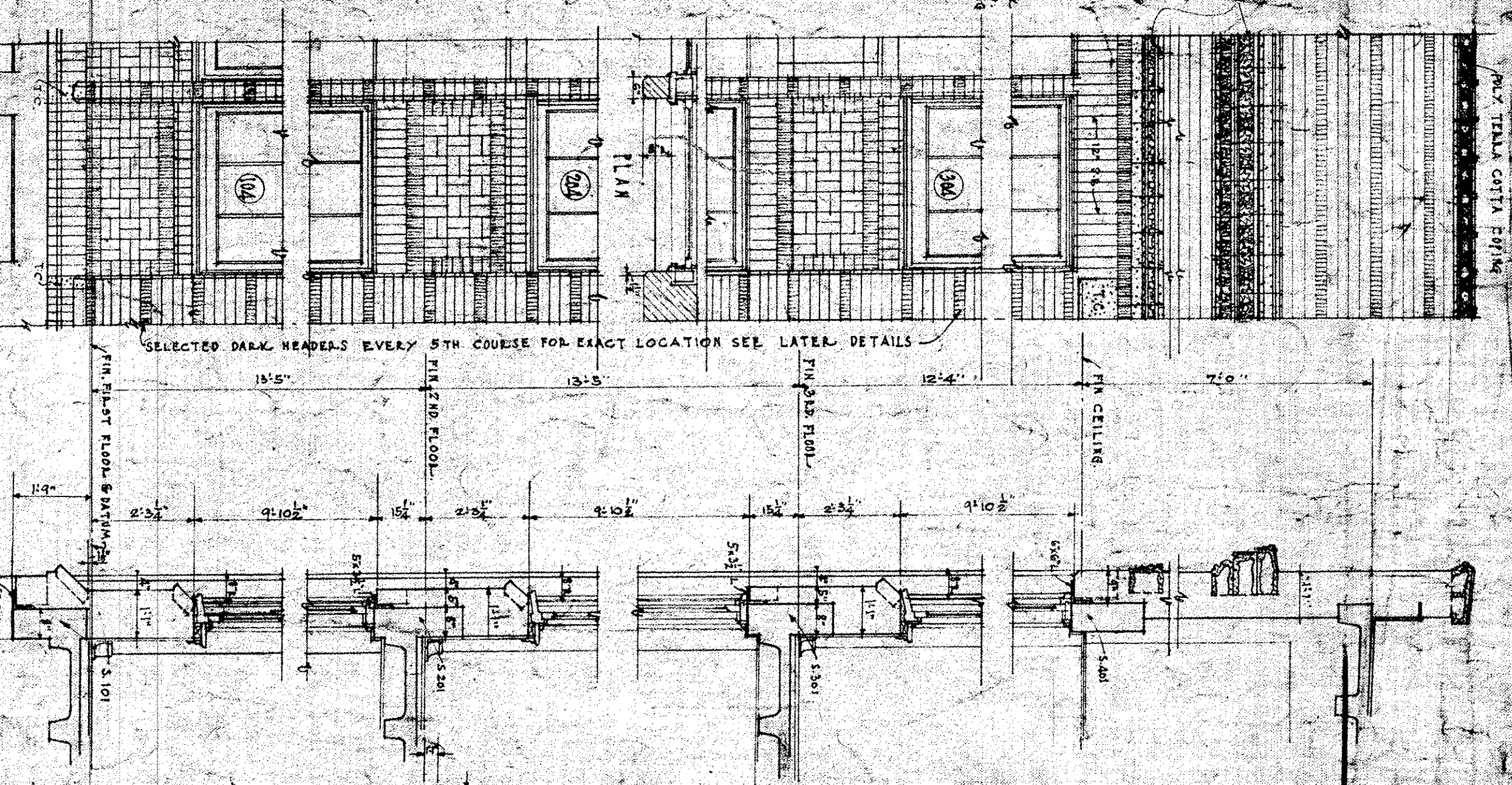
NOTE: FOR INDEX OF MATERIALS & NOTES SEE SPECIFICATIONS.

Francis C. B.
Architect

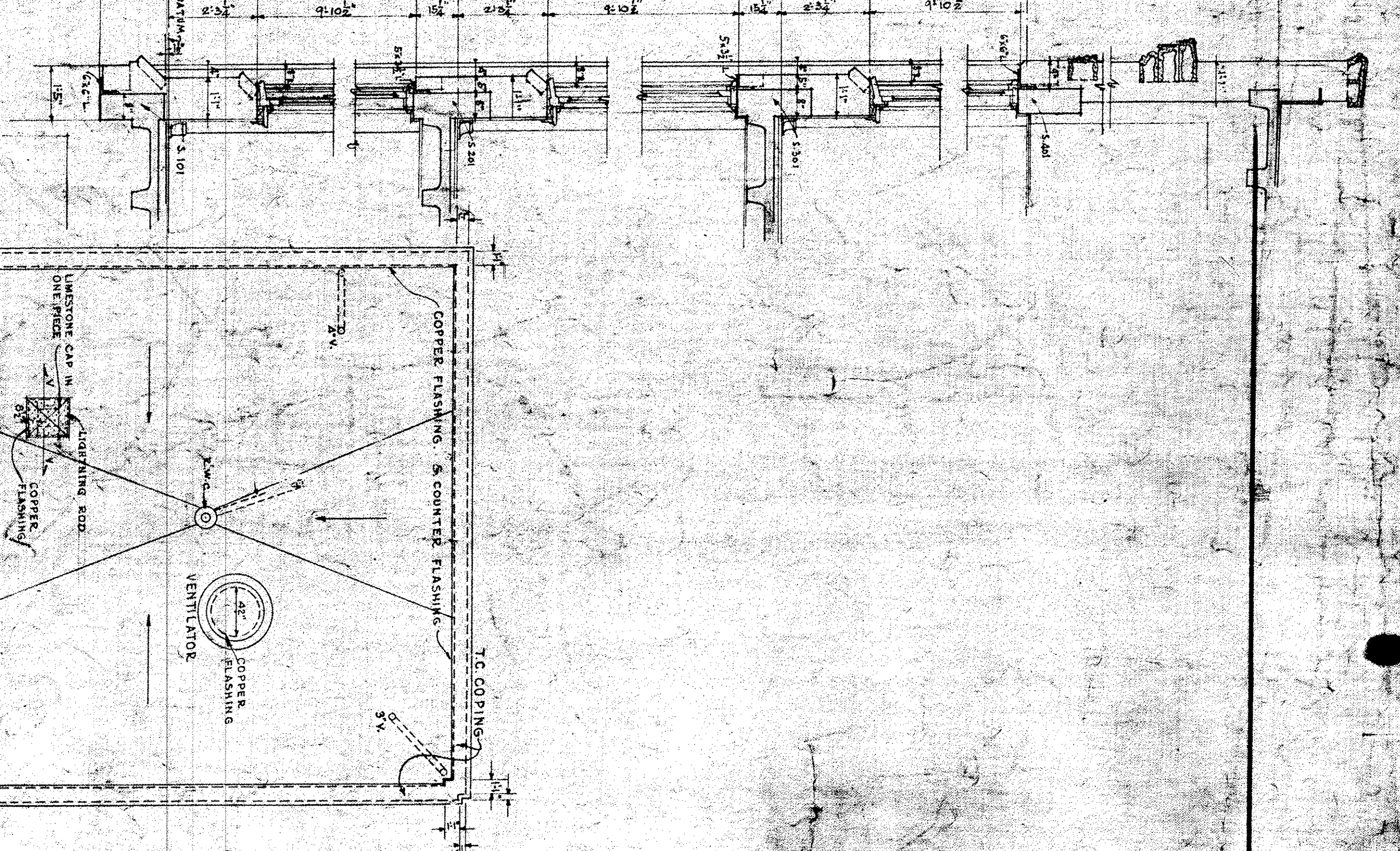
TYPE	144	9



PART. ELEVATION OF WINDOW.
NO. 104, 204 & 304.



3/4 SECTION THRU
WINDOWS 104, 204 & 304.



NOTE:
ALL WINDOW CASES TO
BE SET IN EXTERIOR WALL
WITH 1/2\"