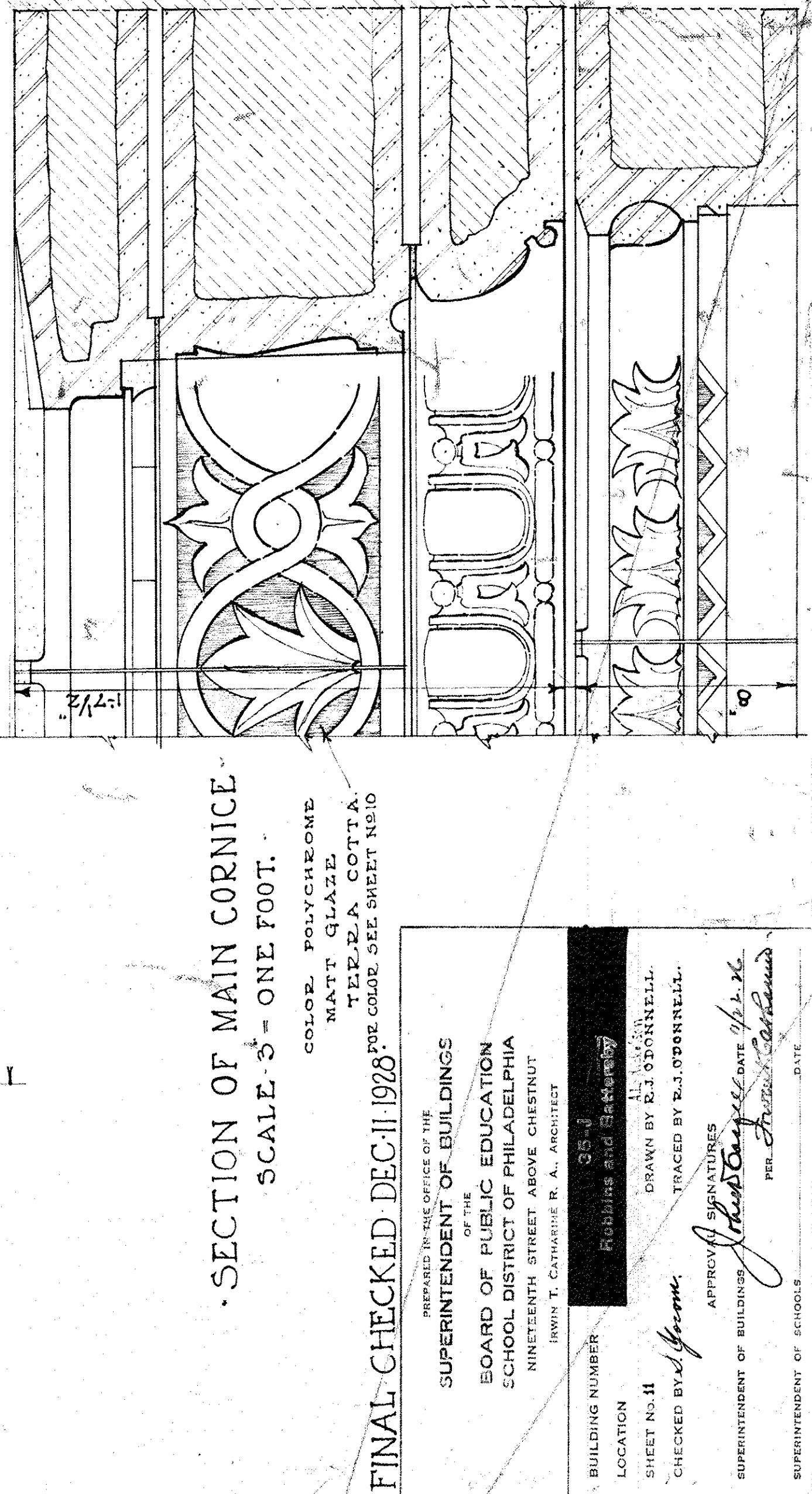
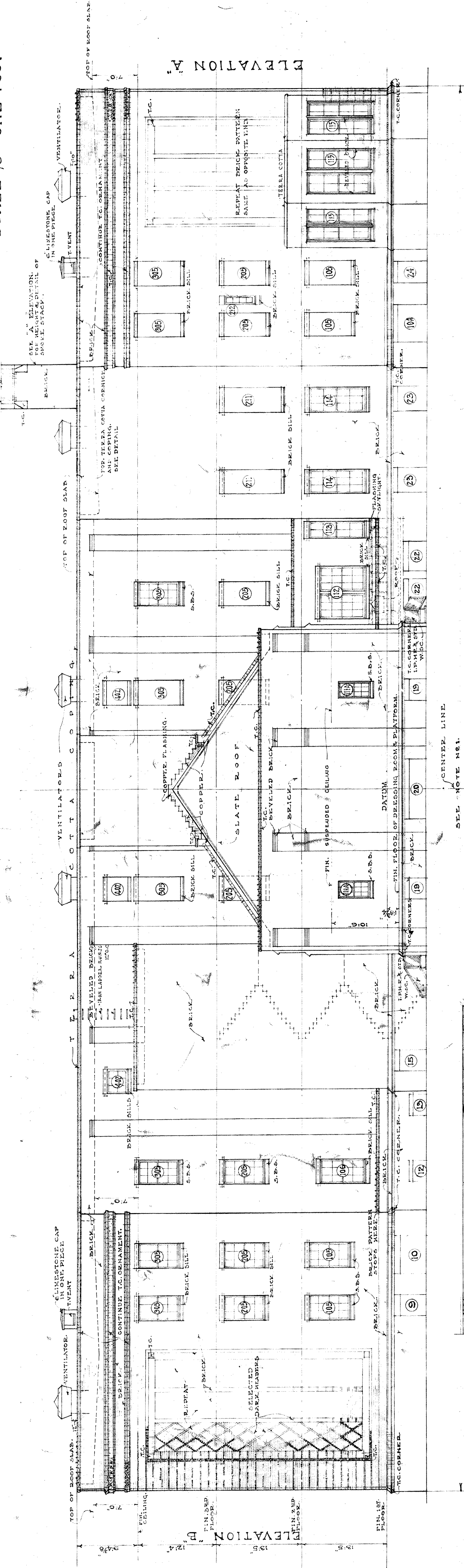


COURT ELEVATION LOOKING
TOWARD STAIR NO. 3.
SCALE 1/8" = ONE FOOT.

"D" ELEVATION OF ASSEMBLY HALL WING.
SCALE 1/8" = ONE FOOT.

"C" ELEVATION OF ASSEMBLY HALL WING.
SCALE 1/8" = ONE FOOT.



SECTION OF MAIN CORNICE.
SCALE 3\"/>

REAR ELEVATION.
SCALE 1/8\"/>

SECTION OF MAIN COPING.
SCALE 3\"/>

FINAL CHECKED DEC-11-1928.

SUPERINTENDENT OF BUILDINGS
BOARD OF PUBLIC EDUCATION
SCHOOL DISTRICT OF PHILADELPHIA
NINETEENTH STREET ABOVE CHESTNUT
IRWIN T. CATHARTIE, R. A., ARCHITECT

BUILDING NUMBER 38-J
LOCATION
SHEET NO. 11
CHECKED BY J. J. O'SHEA
SUPERINTENDENT OF BUILDINGS
APPROVED BY J. J. O'SHEA
PER J. J. O'SHEA

REAR ELEVATION
SCALE 1/8\"/>

SCHOOL BUILDING
SCHOOL DISTRICT OF PHILADELPHIA
PENNSYLVANIA

NOTES
1. FOR ALL EXTERIOR WORK, BELOW DATUM
2. LINE TO FINISHED GRADE, SEE ELEVATION ON DRAWING
3. FOR NOTES AND INDEX OF MATERIALS, SEE
4. FOR 1/4\"/>

Approved by
J. J. O'SHEA