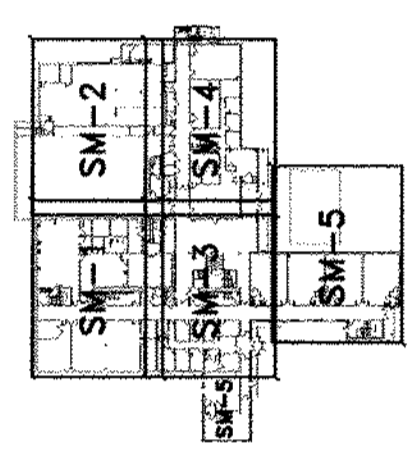


- PLUMBING NOTES
1. ALL DRAINAGE PIPE 4" AND LARGER PITCHES
 2. ALL DRAINAGE PIPE 3" AND SMALLER PITCHES
 3. ALL VENT PIPE PITCHES 1/8" PER FT. (MIN.)
 4. PROVIDE CLEANOUTS AT THE BASE OF ALL SANITARY AND RAINWATER STACKS.

AS-BUILT



REVIEWED

DATE: 8/24/98
BY: KMAC

TRACKEY MECHANICAL, INC.
401 CITY LINE AVE.
BALA CYNWYD, PA. 19004

6TH AND DUNCANNON
PARTIAL 1ST FLOOR
SANITARY & VENTING

DRAWING NO. P-3

DATE: 8/21/98
SCALE: 3/8"=1'-0"
DRAWN: RLL

NO.	REVISION	DATE	BY
1	ADD SLEEVE INFO	7/24/96	RWD
2	UPDATE WALL PER STRUCT	9/12/96	L.W.
3	ELV. CHANGES	9/30/96	R.L.
4	ELV. CHANGES	10/4/96	R.L.
5	ELV. CHANGES	10/8/96	R.L.
6	RELOCATED 6" STORM, CORR. W/SHEET METAL	11/8/96	R.L.
7	ADDED TRAP PRIMER PIPING	4/4/97	D.G.