

THE SCHOOL DISTRICT OF PHILADELPHIA  
SCHOOL REFORM COMMISSION  
Office of Capital Programs  
440 North Broad Street, 3<sup>rd</sup> Floor – Suite 371  
Philadelphia, PA 19130

TELEPHONE: (215) 400-4730

Addendum No. 004

**Subject:** Benjamin Franklin High School Renovation and Improvements  
Electrical Re-Bid  
SDP Contract No. B-019C ( R ) of 2017/18

**Location:** Benjamin Franklin High School  
550 N. Broad Street  
Philadelphia, Pennsylvania 19130

---

This Addendum, dated June 29, 2018, shall modify and become part of the Contract Documents for the work of this project. Any items not mentioned herein, or affected by, shall be performed strictly in accordance with the original documents.

---

1. 0.1 **NOTE:** All inquires (RFIs) regarding the Drawings and Specifications must be submitted via email concurrently to both the Architect/Engineer and the School District Design Project Manager by noon on July 3, 2018.

1.0.2 **NOTE:** THE DESCOPE MEETING WILL BE HELD AT 9:00 AM ON THURSDAY, JULY 12, 2018.

Revise as indicated below or by attachment

**1.1 Specifications**

1.1.1 **REVISE** 01 1000 SUMMARY OF WORK, Paragraph 1.6, and 01 1300 TIME OF COMPLETION, MILESTONES, PHASING OR SEQUENCING, Paragraph 1.2 to read as follows:

**A. WORKING HOURS:**

In addition to the normal 7:00 am – 3:30 pm weekday shift, Contractors shall schedule the work in off hours, overnights, weekends and holidays, with the prior approval of the District, as necessary to complete the project by the stipulated completion dates and to avoid interference with school operations and programs.

Work pertaining to the installation and completion of the Feeder Conduit in the 1st Floor Hallway (at areas east of Column Line 7) must occur during off hours or other times when students are not occupying the building.

**B. PHASE COMPLETION DATES:**

Contractors must meet the following Phase Completion Target Dates for the work tasks listed:

1. PHASE 1 (SUMMER 2018)

- A. START: Notice to Proceed
- B. COMPLETE: August 17, 2018

- C. Demo Student Science Lab tables in 3rd floor science labs (West side); patch floors and walls
  - D. Complete basement common spaces with black pipe
  - E. HWR and HWS Risers on Floors 2-5 isolated (Risers and Valves)
2. PHASE 2 Ben Franklin Offices & Culinary Classroom (2nd Floor East)
    - A. START: Notice to Proceed
    - B. COMPLETE: October 29th, 2018
    - C. Cleaning (GC)/ Furniture (SDP)-Week of October 29, 2018
    - D. Turn Over: November 5, 2018
  3. PHASE 3-Floors 3, 4 and 5 East
    - A. START: Notice To Proceed
    - B. COMPLETE: December 14, 2018
    - C. Cleaning (GC)/ Furniture (SDP) Week of December 17, 2018
    - D. Turn Over- Week of December 24, 2018
  4. Phase 4-First Floor Cafeteria
    - A. START: November 5, 2018
    - B. COMPLETE: March 15, 2019
    - C. Cleaning (GC)/Furniture (SDP) -Week of March 18, 2019
    - D. Turn Over: March 25, 2019
  5. Phase 5-Floors 1, 2 and 3 West
    - A. START: January 2, 2019
    - B. COMPLETE: May 3, 2019
    - C. Cleaning (GC)/Furniture (SDP) Week of July 1, 2019
  6. Phase 6-Sixth Floor East
    - A. START: March 25, 2019
    - B. COMPLETE: May 6, 2019
    - C. Cleaning (GC)/ Furniture (SDP): Week of May 13, 2019
  7. Phase 7-Floors 4, 5 and 6 West
    - A. START: April 15, 2019
    - B. COMPLETE: June 28, 2019
    - C. Cleaning (GC)/Furniture (SDP) - Week of July 1, 2019
  8. Phase 8-Gymnasium/ Auditorium Lobby
    - A. START: June 10, 2019
    - B. COMPLETE: August 16, 2019

**C. PHASING PLAN DETAILS:**

See Drawings G-1009 through G-1015 for details and layout of Phasing Plan

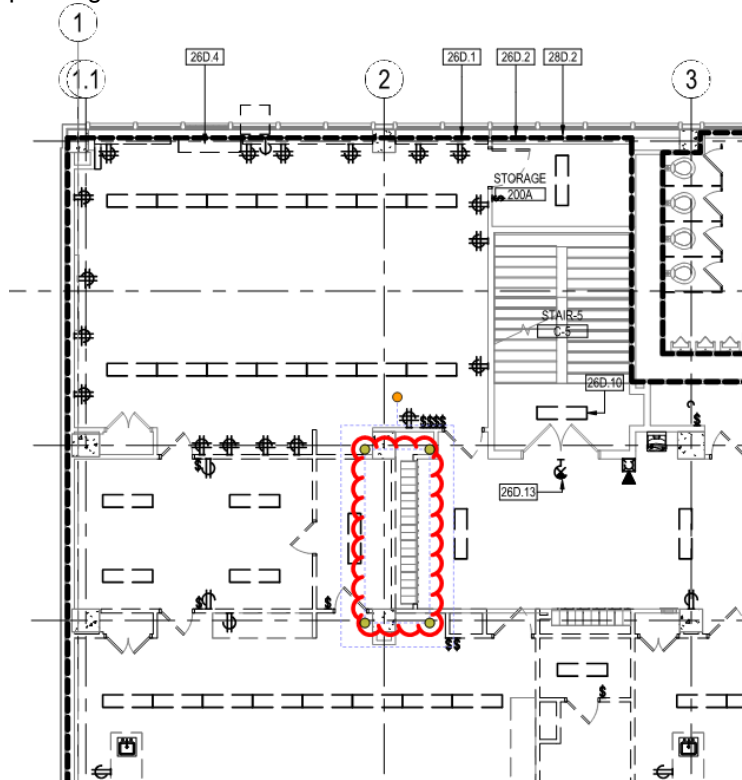
NOTE: The project schedule may require the Contractors to secure expedited deliveries of equipment and to work overtime, multiple shifts, and weekends to achieve the milestone and completion dates. Bids shall be deemed to include all

such anticipated costs; no adjustment to the Contract Price shall be made for any such costs.

## 2.1 Drawings

### 2.1.1 Electrical Drawings:

- **Drawing E-100.2**
  - REMOVE work associated with removing and reinstallation of existing classroom light fixtures within the diagonal hatch area in accordance with keynote 26D.B4.
- **Drawing E102**
  - REMOVE scope of work as delineated by keynote 26D.2 for the CMU wall to be demolished at column line 2, between B & C. See GI-009 for phasing information



- REMOVE scope of work as delineated by keynotes 26D.2 and 26D.3 for the east half of the building, from column lines 9 to 18 and A to D. See GI-010 for phasing information.
- Remove scope of work as delineated by keynote 26D.4 for the east half of the building, from column lines 9 to 18 and A to D.
- **Drawing E103**
  - REMOVE work associated with demolishing existing Lab 301 & 303 table receptacles and wiring in accordance with keynote 26D.2. See GI-009 for phasing information.

**END OF ADDENDUM #004**