

THE SCHOOL DISTRICT OF PHILADLPHIA  
SCHOOL REFORM COMMISSION  
Office of Capital Programs  
440 North Broad Street, 3<sup>rd</sup> Floor – Suite 371  
Philadelphia, PA 19130

TELEPHONE: (215) 400-4730

**Addendum No. 01**

**Subject:** Avery Harrington Elementary School – Generator Replacement  
SDP Contract No. B-053 (C) of 2016/17

**Location:** Avery Harrington Elementary School  
5300 Baltimore Ave  
Philadelphia, Pennsylvania 19143

---

**This Addendum, dated August 20, 2017, shall modify and become part of the Contract Documents for the work of this project. Any items not mentioned herein, or affected by, shall be performed strictly in accordance with the original documents.**

---

Scope Change:

A new ATS switch is required. Remove the existing ATS and provide new. See Section 26 3600 TRANSFER SWITCHES and Revised Drawing E-101 attached.

**BID RFI #01**

Question #1. Spec section 01 1100 seems to indicate we are responsible for any and all hazardous materials. For one, the existing generator seems to be leaking oil on the concrete basement floor. Please advise who is responsible for remediation

Response – SDP will be responsible for remediation, including leaking oil.

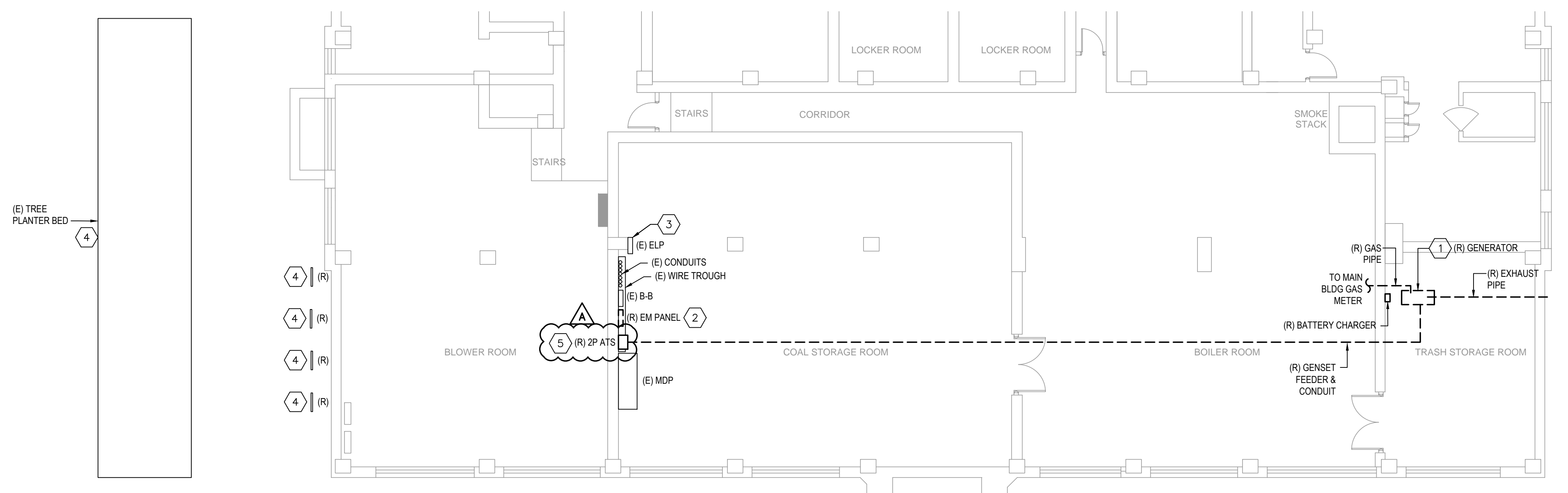
Question #2. Demolition drawings indicate we are to remove gas piping back to the gas meter. Please indicate if this gas piping was ever installed, (the existing generator was never used) and the actual location of the existing gas meter such that we can price this demolition accurately.

Response – Gas piping is to be removed; Assume 150ft of piping will be removed.

**End of Addendum**

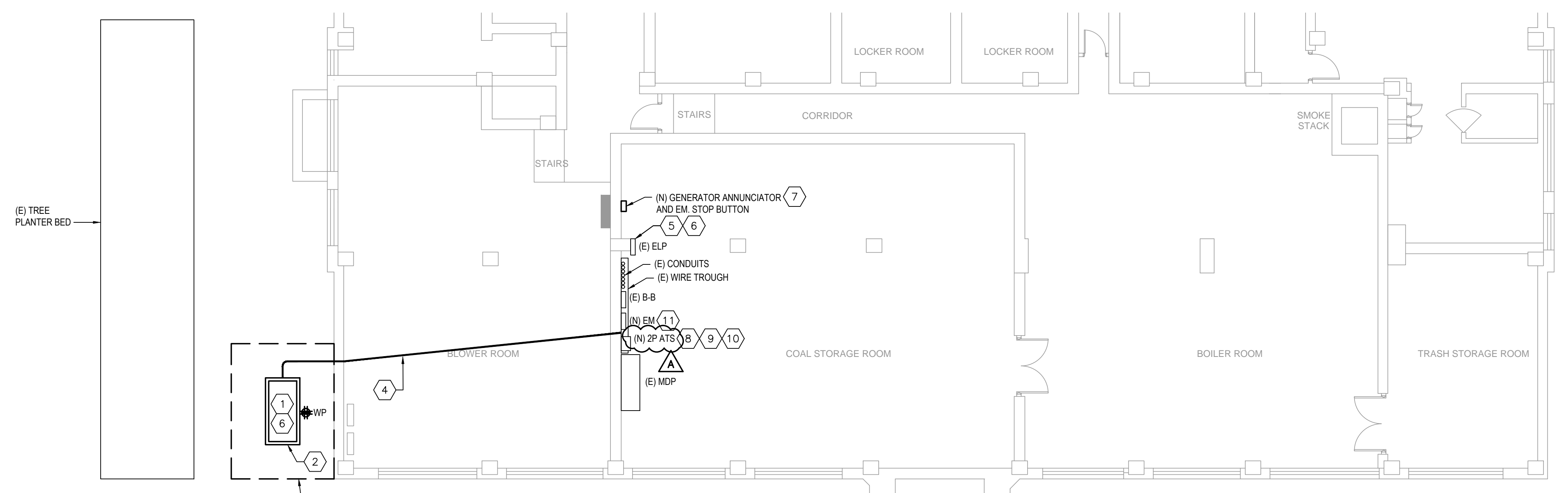
**Attachment:**

**Revised Drawing E-101**



DEMOLITION PLAN 1  
1/8" = 1'-0"

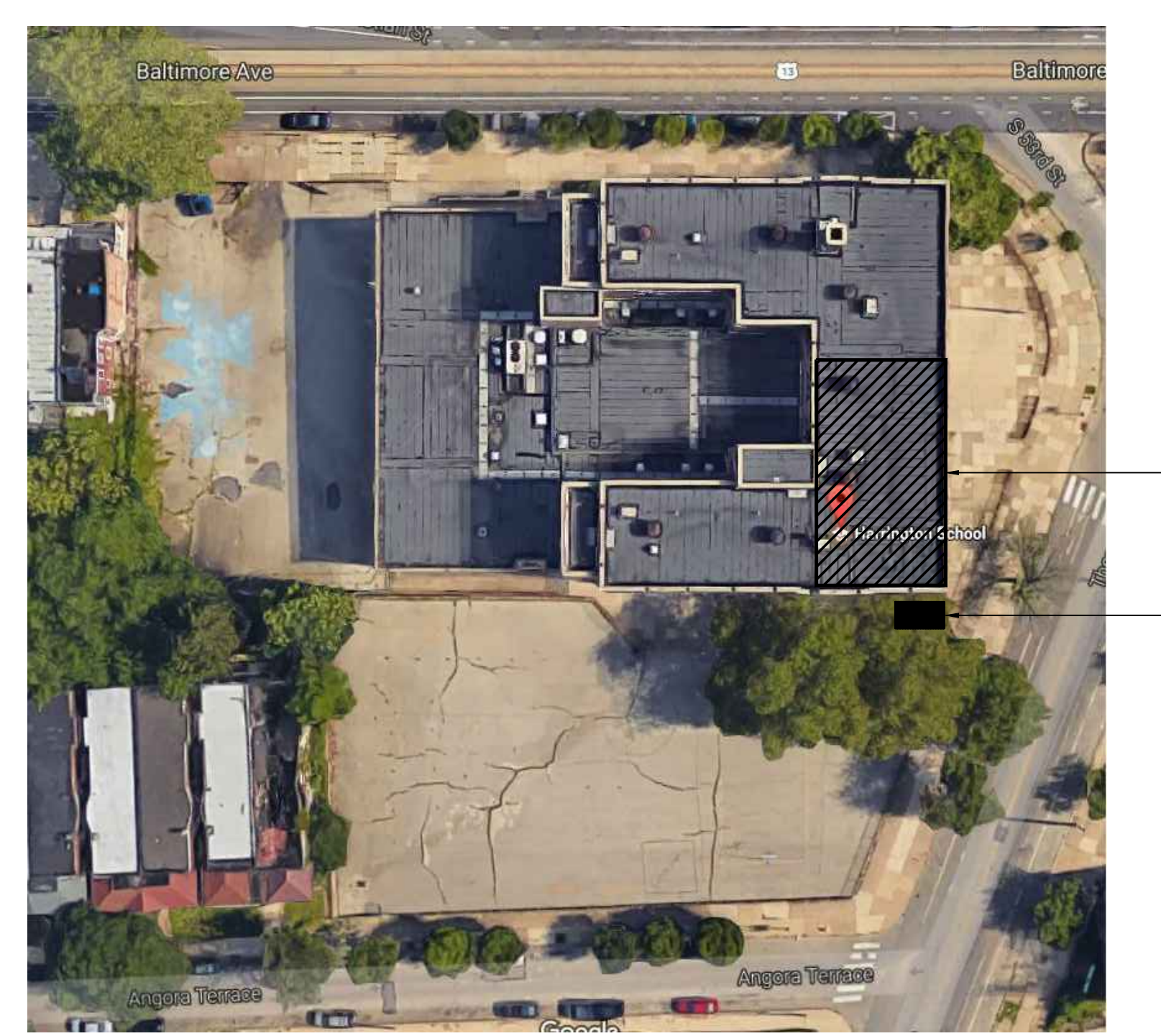
DEMOLITION KEYNOTES	
1	DISCONNECT AND REMOVE GENERATOR, ALL ASSOCIATED ACCESSORIES (BATTERY CHARGERS, EXHAUST MANIFOLD, ETC.) AND ALL ASSOCIATED WIRING AND CONDUIT. EXISTING CONCRETE HOUSEKEEPING PAD FOR GENERATOR TO REMAIN. DISCONNECT AND REMOVE ALL EXHAUST AND GAS PIPING AND HANGERS. REMOVE, CAP AND SEAL GAS SUPPLY PIPING BACK TO GAS METER. PATCH AND REPAIR WALL PENETRATION FOR EXHAUST PIPING.
2	DISCONNECT AND REMOVE FUSED EMERGENCY PANEL "EM". DISCONNECT AND SAFE OFF ALL (2) BRANCH CIRCUITS. PREPARE FOR RECONNECTION TO NEW PANEL BOARD.
3	DISCONNECT AND REMOVE FEEDER CONDUCTORS AND CONDUIT (E) ATS TO (E) PANEL ELP. PANEL BOARD ELP AND BRANCH CIRCUITS TO REMAIN AS IS.
4	EXISTING BIKE POST TO BE REMOVED. EXISTING TREE PLANTER BED TO REMAIN AS IS.
5	EXISTING 100A, 2-POLE, 250V AUTOMATIC TRANSFER SWITCH (ATS) TO BE REMOVED. DISCONNECT EMERGENCY LINE FEEDERS AND LOAD FEEDERS FROM AT'S. NORMAL POWER FEEDERS TO AT'S TO REMAIN AS IS.



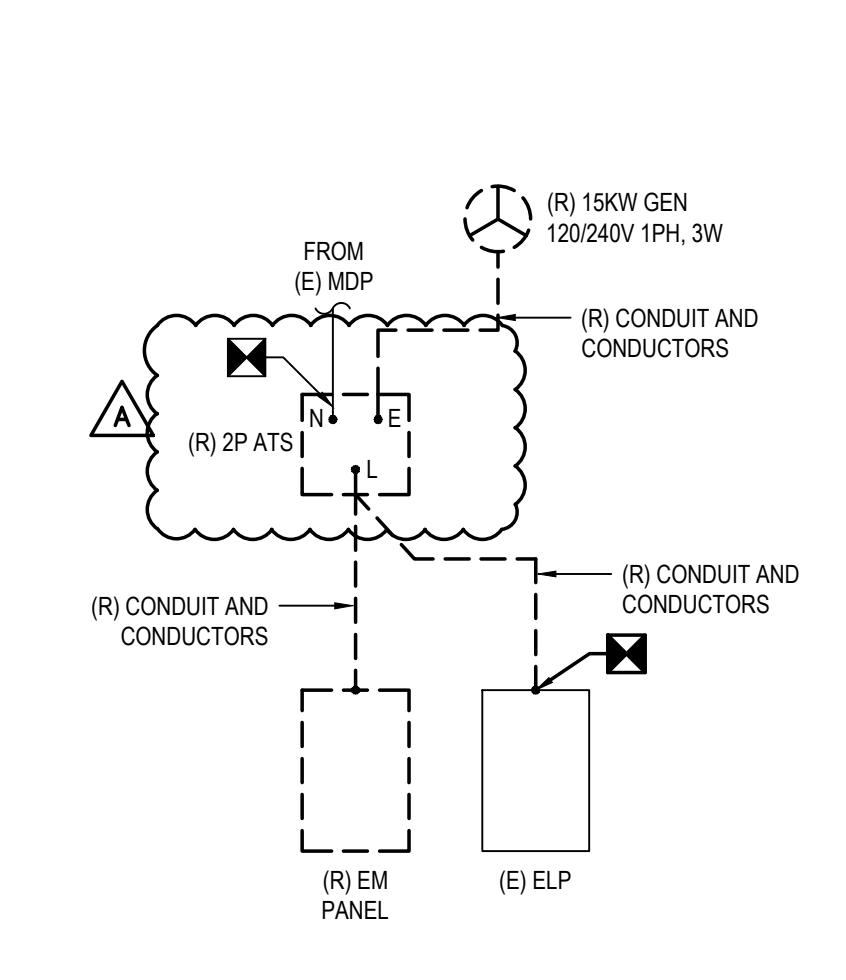
NEW WORK PLAN 2  
1/8" = 1'-0"

GENERAL NOTES:  
A. ALL CONDUIT SHALL BE THREADED GALVANIZED RIGID METAL (STEEL) CONDUIT ONLY.  
B. CONTRACTORS SHALL COORDINATE INSTALLATION WITH SDP ENVIRONMENTAL TEAM.

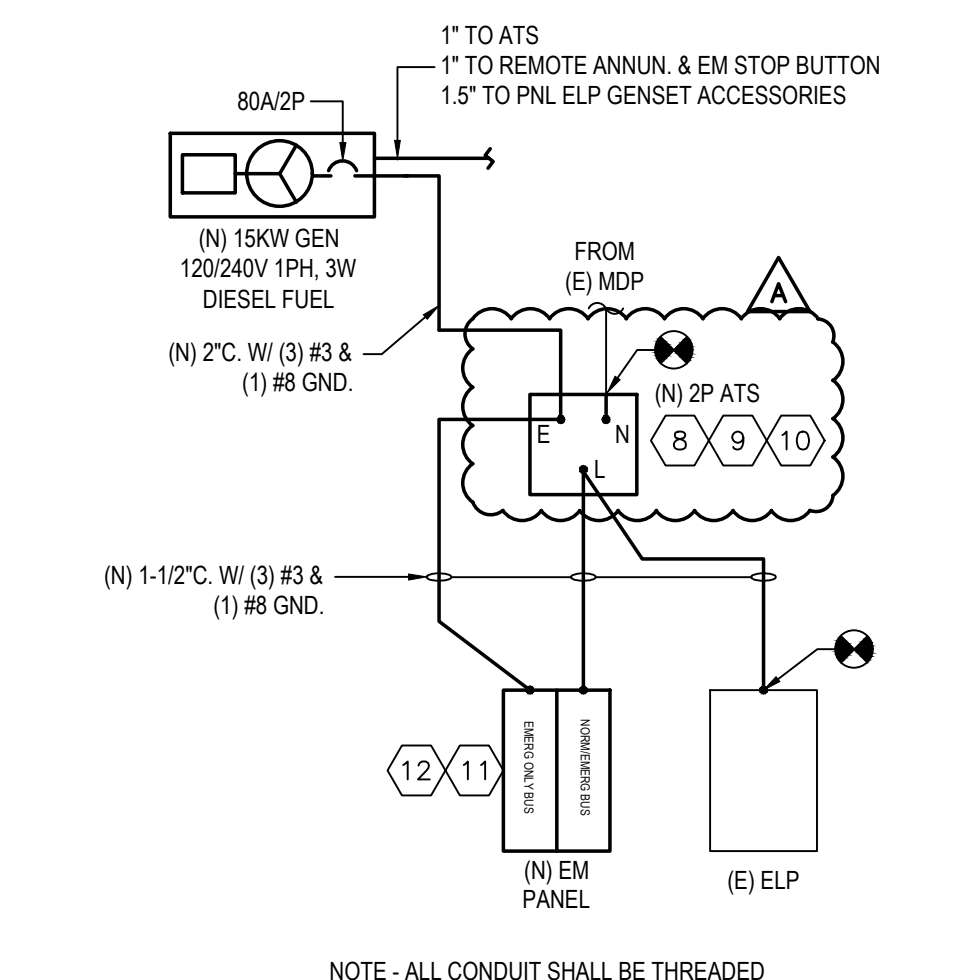
NEW WORK SHEET NOTES	
1	PROVIDE NEW DIESEL GENERATOR WITH LEVEL 1 SOUND ATTENUATING WEATHERPROOF ENCLOSURE. GENERATOR SHALL BE RATED FOR 15KW, 120/240V, 1PH WITH 80A/2P MCB AT GENERATOR CONTROL PANEL. PROVIDE GENERATOR WITH 48-HOUR DOUBLE-WALLED SKID-BASED DIESEL FUEL TANK WITH OVERFLOW AND SECONDARY VENTILATION, MOUNTED UNDER GENERATOR.
2	PROVIDE NEW 6" CONCRETE HOUSEKEEPING PAD, 3000 PSI CONCRETE SLAB FOR NEW GENERATOR. PAD SHALL EXTEND AT MINIMUM 6' BEYOND FOOTPRINT OF GENERATOR ENCLOSURE ON ALL SIDES. COORDINATE EXACT DIMENSIONS OF PAD WITH SELECTED GENERATOR EQUIPMENT. SEE DWG E501 FOR HOUSEKEEPING PAD DETAIL.
3	PROVIDE CHAIN LINK FENCE FOR GENERATOR. SEE DWG E501 FOR FENCING DETAILS.
4	PROVIDE (1) 2" CONDUIT FOR GENSET INCOMING POWER WIRING, (1) 1" CONDUIT FOR CONTROL WIRING TO AT'S, (1) 1" FOR GENERATOR EM. STOP AND REMOTE ANNUNCIATOR PANEL, (1) 1-1/2" FOR GENSET ACCESSORIES BRANCH CIRCUITS. CONDUITS SHALL BE ROUTED ABOVE-GROUND OUTSIDE BUILDING TO ENTER AT 12' A.F.F. IN BOILER ROOM. COORDINATE EXACT PATHWAY IN FIELD. SEE DWG E501 FOR DETAIL OF CONDUIT PENETRATION OF EXTERIOR WALL.
5	CONNECT NEW FEEDER CONDUCTORS FROM EXISTING AT'S TO EXISTING 80A/2P MAIN BREAKER IN PANEL ELP. SEE NEW SINGLE LINE DIAGRAM FOR DETAILS.
6	PROVIDE POWER FOR GENERATOR ACCESSORIES: ANTI-CONDENSATE HEATER, BLOCK HEATER, CONVENIENCE RECEPTACLE, AND BATTERY CHARGER. UTILIZE DEDICATED 120V, 20AMP CIRCUITS FOR EACH ACCESSORY: ANTI-CONDENSATE HEATER - ELP#4, BLOCK HEATER - ELP#6, BATTERY CHARGER - ELP#8, CONV. RECEPTACLE - ELP#10. UTILIZE EXISTING SPARE BREAKERS WITHIN PANEL. PROVIDE (2) #12 - (1) #12 GND. FOR EACH CIRCUIT ROUTED WITHIN 1-1/2" CONDUIT TO GENERATOR. PROVIDE AN UPDATED CIRCUIT DIRECTORY FOR EXISTING PANEL ELP.
7	PROVIDE NEW EMERGENCY STOP BUTTON AND GENERATOR ANNUNCIATOR WITH WIRE GUARD CAGE, COMPATIBLE WITH NEW GENERATOR. PROVIDE 1" CONDUIT FROM GENERATOR TO EM. STOP BUTTON AND ANNUNCIATOR FOR INTERCONNECTION OF BUTTON AND ANNUNCIATOR TO GENERATOR CONTROL PANEL. PROVIDE WIRING INTERCONNECTION PER GENSET MANUFACTURER REQUIREMENTS. ANNUNCIATOR PANEL AND EM STOP BUTTON TO BE LOCATED WITHIN BUILDING ENGINEER'S OFFICE.
8	PROVIDE NEW 100A, 240V, 2P, 3-WIRE ASCO 300 SERIES OR APPROVED EQUAL. AT'S CONTROLLER SHALL BE PROVIDED WITH AUTOMATIC ENGINE EXERCISER FUNCTION. RECONNECT EXISTING NORMAL POWER FEEDER TO NEW AT'S.
9	RECONNECT EXISTING NORMAL POWER FEEDER TO NEW AT'S. INTERCONNECTED TO SUPPLY FEEDER CONDUCTORS AT AUTOMATIC TRANSFER SWITCH. NEUTRAL CONDUCTOR SHALL NOT BE SWITCHED.
10	MODIFY OR PROVIDE NEW TERMINATION LUGS WITHIN AUTOMATIC TRANSFER SWITCH FOR TERMINATION OF NEW CONDUCTORS. CONTRACTOR SHALL PERFORM A COMPLETE MAINTENANCE TEST OF THE TRANSFER SWITCH AND PROVIDE A FULL REPORT TO SDP CONFIRMING PROPER OPERATION OF THE TRANSFER SWITCH. CONTRACTOR SHALL REPAIR AND/OR REPLACE ANY HARDWARE AND/OR SOFTWARE THAT IS REQUIRED FOR COMPLETE AND PROPER OPERATION OF AT'S.
11	NEW CUSTOM PANEL "EM". SEE SINGLE LINE DIAGRAM AND DWG E601 FOR MORE DETAILS. RECONNECT ALL EXISTING (2) (24) BRANCH CIRCUITS TO NEW PANEL BOARD. PROVIDE NAME PLATE PLACARDS FOR EACH BRANCH CIRCUIT. PANEL BOARD SHALL BE PROVIDED WITH (2) MAIN BREAKERS, (1) MCB FOR EMERGENCY ONLY FEEDER, (1) MCB FOR NORMAL EMERGENCY FEEDER TO PANEL BOARD. PROVIDE PLACARD LABELS FOR EACH MAIN BREAKER. PROVIDE A TVSS FOR NEW PANEL BOARD. 30A, DISCONNECT WITH (2) 30A FUSES AND TRANSIENT SURGE SUPPRESSION DEVICE. RUN #10 AWG FROM DISCONNECT TO FEED THRU LUGS ON NORMAL POWER BUS BAR.
12	PROVIDE A PLACARD LABEL AT PANEL BOARD IDENTIFYING THAT THE PANEL BOARD IS SUPPLIED FROM (2) SOURCES OF POWER. PLACARD SHALL STATE "PANEL BOARD IS SUPPLIED FROM TWO SOURCES OF POWER. TO DE-ENERGIZE PANEL BOARD, 1. SHUT OFF EMERGENCY ONLY MAIN BREAKER AND NORMAL EMERGENCY MAIN BREAKER, AND LOCK OUT BREAKER. AUTOMATIC TRANSFER SWITCH SHALL BE LOCKED INTO OPEN SWITCH POSITION."



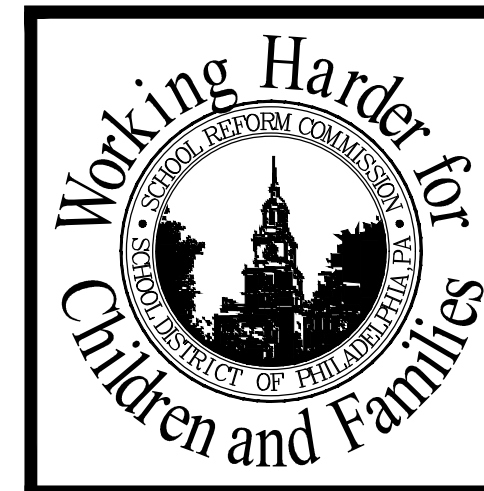
PROJECT SITE PLAN 3  
NTS



PARTIAL DEMOLITION SINGLE LINE DIAGRAM 3  
NOT TO SCALE



PARTIAL NEW WORK SINGLE LINE DIAGRAM 4  
NOT TO SCALE



SEAL

**NORR**  
NORR Design, Inc.  
1617 JFK Blvd, Suite 1600  
Philadelphia, PA 19103  
T 215.526.4849  
F 215.526.4852  
Architecture - Interior Design - Engineering

SCHOOL & LOCATION  
AVERT HARRINGTON ELEMENTARY SCHOOL  
3500 BALTIMORE AVE PHILADELPHIA, PA 19149

PROJECT TITLE  
EMERGENCY GENERATOR REPLACEMENT  
PARTIAL BASEMENT PLAN -  
DEMOLITION AND NEW WORK

APPROVED BY: CHARLES LI, PE

SCHOOL DISTRICT OF PHILADELPHIA  
THE SCHOOL REFORM COMMISSION

DEPARTMENT OF DESIGN AND CONSTRUCTION SERVICES  
PHILADELPHIA, PA 19107-4015  
215.400.4230 FAX 215.400.4751  
www.phila.edu

CONTRACTOR TO VERIFY ALL CONDITIONS AND DIMENSIONS AT SITE

9	
8	
7	
6	
5	
4	
3	08/03/2018
2	08/03/2018
1	08/03/2018

NO. / DATE / REVISION

SPEC. NO.	DATE
B-053C 2016/17	08/03/2018
SCALE	LOCATION NO.
AS NOTED	1300
DRAWN BY	TYPE NO.
NVP	
CHECKED BY	FILE NO.
NVP	

DRAWING NO.  
**E101**