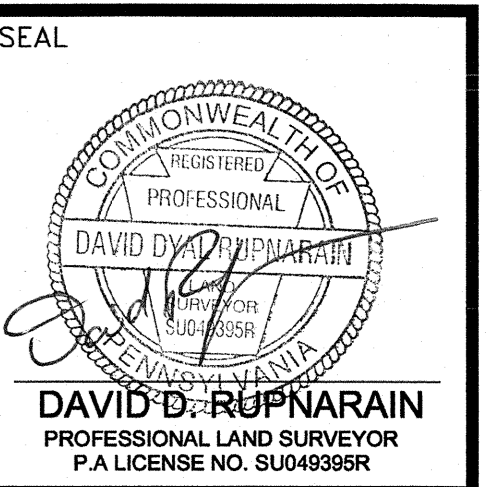
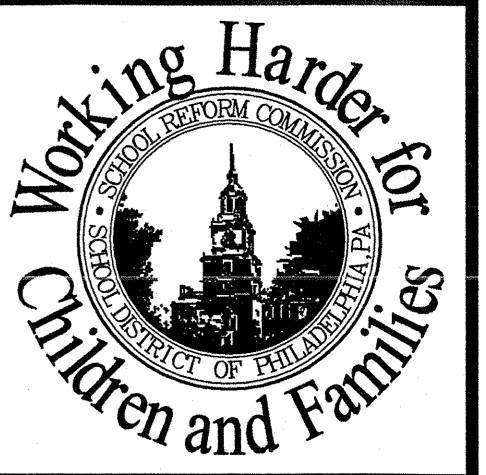


Appendix "B"  
Site Survey



**CONSULTANTS**

**KSE**  
KSE ENGINEERS, P.C.  
ENGINEERS/SURVEYORS/CONSTRUCTION MANAGERS  
PHILADELPHIA, PENNSYLVANIA 19106  
PHONE: 215.925.0425 • FAX: 215.925.0430

**SCHOOL & LOCATION**

ABRAHAM LINCOLN HIGH SCHOOL 3301 RYAN AVENUE PHILADELPHIA PA  
AUSTIN MEEHAN MIDDLE SCHOOL 3001 RYAN AVENUE PHILADELPHIA PA

**PROJECT TITLE**

SITE SURVEY LINCOLN AND MEEHAN SCHOOLS  
DRAWING TITLE  
BOUNDARY AND TOPOGRAPHIC SURVEY

APPROVED BY

**SCHOOL DISTRICT OF PHILADELPHIA  
THE SCHOOL REFORM COMMISSION**

OFFICE OF CAPITAL PROGRAMS  
440 NORTH BRAD STREET  
PHILADELPHIA, PA 19130-4015  
215.400.0000 ext. 4751  
WWW.PHILAD.SDR.COM

CONTRACTOR TO VERIFY ALL CONDITIONS AND DIMENSIONS AT SITE

NO.	DATE	REVISION
9		
8		
7		
6		
5		
4		
3		
2		
1		

SPEC NO.	DATE
AS NOTED	4/6/2018
DRAWN BY	TYPE NO.
WC	
CHECKED BY	FILE NO.
EM	2016-1820-01

DRAWING NO.

KEY SHEET

**P.A.S.P.C.S.  
SOUTH ZONE  
NAD83**

- NOTES:**
- HORIZONTAL DATUM: PENNSYLVANIA STATE PLANE COORDINATE SYSTEM SOUTH ZONE (NAD 83), ESTABLISHED BY GLOBAL POSITIONING SYSTEM METHODOLOGY. VERTICAL DATUM: PHILADELPHIA CITY DATUM.
  - EXISTING FEATURES AND ELEVATIONS SHOWN HEREON, ESTABLISHED BY PHOTOGRAMMETRIC METHODS FROM AERIAL PHOTOGRAPHY DATED DECEMBER 2017, AND SUPPLEMENTED WITH CONVENTIONAL SURVEY METHODS, AERIAL MAPPING PREPARED BY ROBINSON AERIAL SURVEY ON JANUARY 5, 2018.
  - UNDERGROUND UTILITY LINES SHOWN HEREON, GAS, ELECTRIC, TELEPHONE AND WATER ALIGNMENTS ARE BASED ON A "BEST FIT" OF UTILITY PLANS PROVIDED BY UTILITY COMPANIES AND EXISTING DRAWINGS FROM THE SCHOOL DISTRICT OF PHILADELPHIA AND SURVEYED LOCATIONS OF EXISTING HARDWARE FEATURES SUCH AS VALVES AND MANHOLES.
  - UNDERGROUND UTILITY LINES SHOWN HEREON, STORM AND SANITARY SEWER ALIGNMENTS ARE BASED ON VISUAL OBSERVATIONS OF OPEN MANHOLES, EXCEPT WHERE NOTED OTHERWISE. IT IS ASSUMED THAT SEWER LINES RUN IN A STRAIGHT LINE FROM MANHOLE TO MANHOLE. THE TERM "REC." DENOTES ALIGNMENTS BASED ON UTILITY PLANS (SEE MAP REF. NO.1). THE TERM "SPE" DENOTES COMPUTED INVERTS AND ASSOCIATED PIPE SIZES AND TYPE TAKEN FROM RECORD INFORMATION, NOT FIELD VERIFIED.
  - TOTAL PROJECT AREA (D.S.) = 3,915,797 SQ.FT. OR 89.894 ACRES. TOTAL PROJECT AREA (U.S.F.) = 3,935,400 SQ.FT. OR 90.344 ACRES.
  - THE EXISTENCE OR NON-EXISTENCE OF WETLANDS HAS NOT BEEN ADDRESSED UNDER THIS CONTRACT.
  - RIGHT OF WAY LINES SHOWN HEREON ARE BASED ON MAP REF. NO. 2 AND 3 ARE IN ACCORDANCE WITH FOUND BOUNDARY EVIDENCE IN REBARS, CAPS AND MONUMENT.
  - ALL CONTROL POINTS SHOULD ALSO BE CONSIDERED BENCH MARKS AND/OR VERTICAL AND HORIZONTAL SURVEY TRAVERSE POINTS.
  - APPLY SCALE FACTOR OF 1.0025 PROVIDED BY DISTRICT SURVEY REGULATOR FOR PHILADELPHIA DISTRICT STANDARD MEASURE TO U.S. STANDARD MEASURE.
  - THIS SURVEY PREPARED IN ACCORDANCE WITH CERTAIN TITLE SEARCH BY FIDELITY NATIONAL TITLE INSURANCE COMPANY TW FILE #678743 FILE #ACC-12356 (3001 RYAN AVENUE) AND TW FILE #678750 FILE #ACC-12357 (3201 RYAN AVENUE), DATED JANUARY 26 2018.
- EXCEPTIONS:**
- DB C/P 2961 PAGE 465 COVENANTS AND RESERVATIONS: R.O.W. FOR SEWER AND WATER MAINS SHOWN.
- DOCUMENT 52096442 OPERATIONS AND MAINTENANCE AGREEMENT FOR STORMWATER MANAGEMENT PRACTICES, LEGAL IN NATURE.
- DB 2187 PAGE 461 AGREEMENT BETWEEN THE SCHOOL DISTRICT OF PHILADELPHIA AND THE CITY OF PHILADELPHIA, ORDINANCE TO STRIKE CERTAIN STREETS FROM CITY PLAN, LEGAL IN NATURE.
- DB C/P 2961 PAGE 473 AGREEMENT BETWEEN THE SCHOOL DISTRICT OF PHILADELPHIA AND THE CITY OF PHILADELPHIA, LEGAL IN NATURE.
- DOCUMENT 52049742 VERIZON BUILDING ENTRANCE FACILITY GRANT IS SHOWN.
- MAP REFERENCES:**
- A CERTAIN MAP ENTITLED "PARTIAL GRADING, UTILITY AND STORMWATER MANAGEMENT PLAN-S", PREPARED BY AGDOS LOVERA ARCHITECTS AND HUNT ENGINEERING COMPANY, DATED NOVEMBER 4, 2007 SHEETS NO. C108-C112.
  - A CERTAIN MAP ENTITLED "COMPILATION CITY PLAN NO. 371", DATED FEBRUARY 4, 2004 SHEETS NO. 2 OF 3 AND 3 OF 3.
  - A CERTAIN MAP ENTITLED "BOUNDARY & TOPOGRAPHICAL PLAN OF ABRAHAM LINCOLN HIGH SCHOOL AND AUSTIN MEEHAN MIDDLE SCHOOL", PREPARED BY BARTON & MARTIN ENGINEERS, DATED MAY 12, 2005.
- DEED REFERENCES:**
- DB 840 PAGE 580.  
DB 2961 PAGE 465.  
DB 1310 PAGE 437.  
DB 1310 PAGE 466.  
DB 342 PAGE 117.

ACT 187

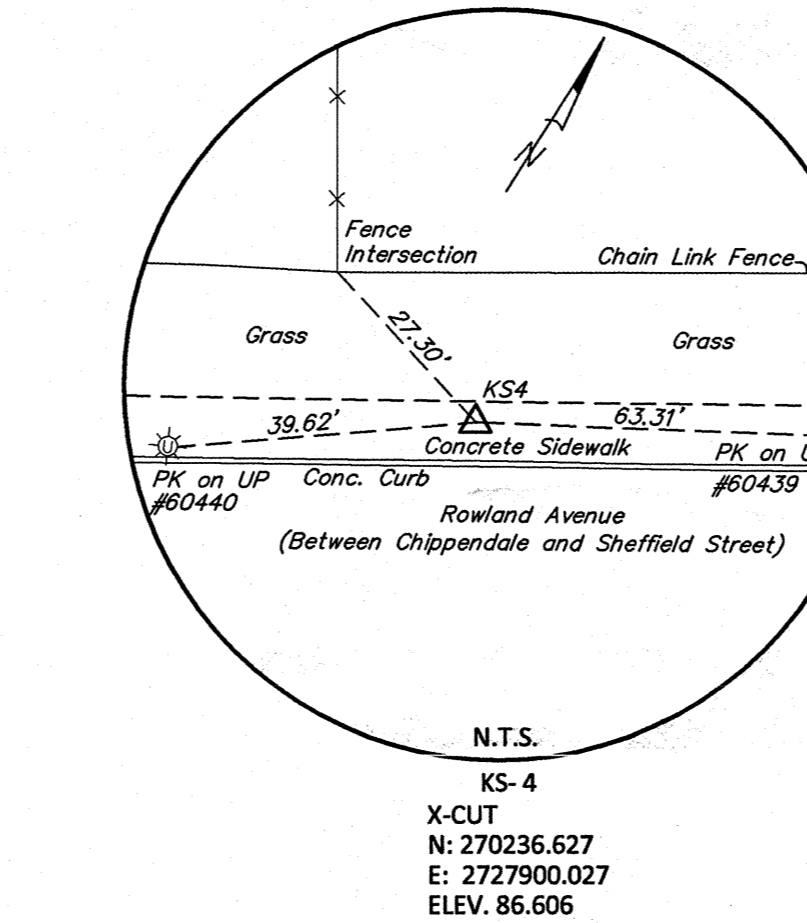
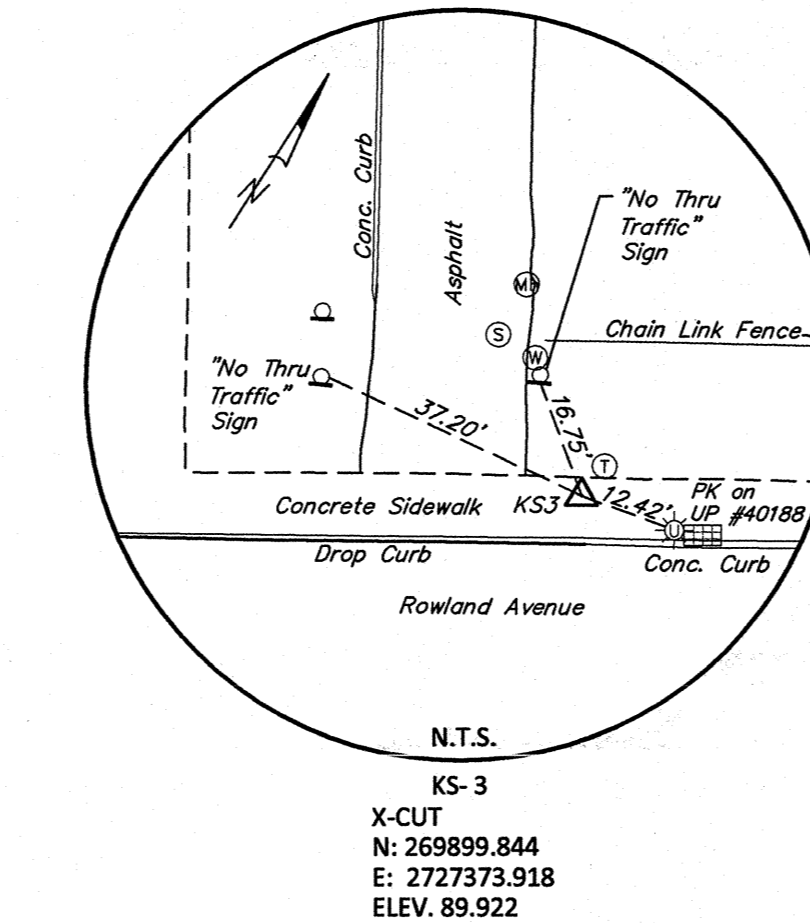
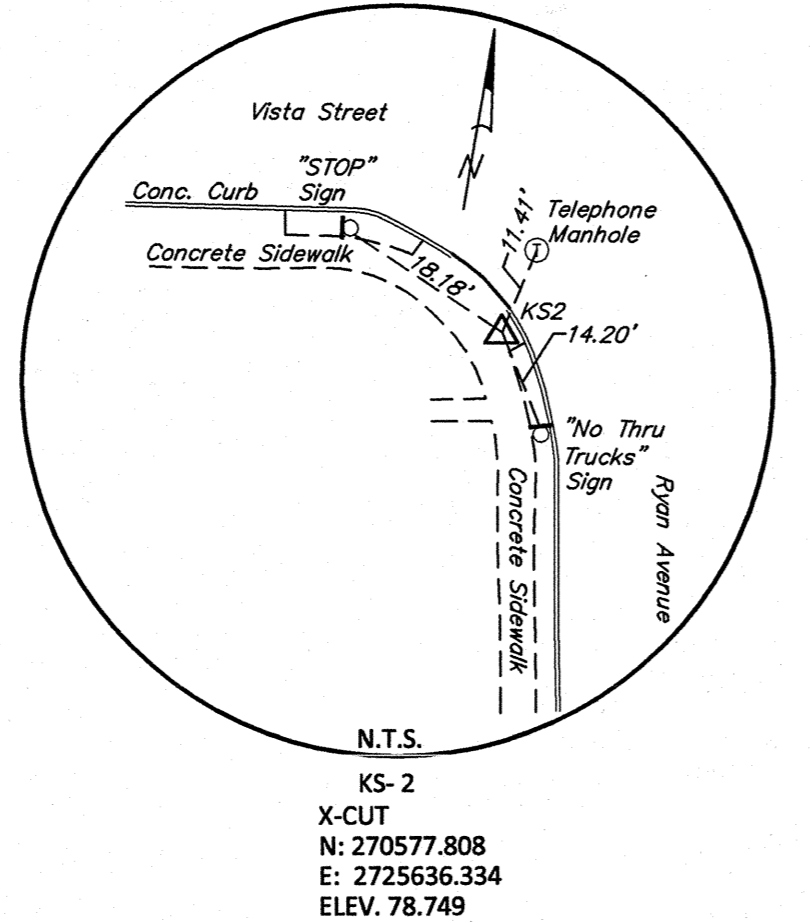
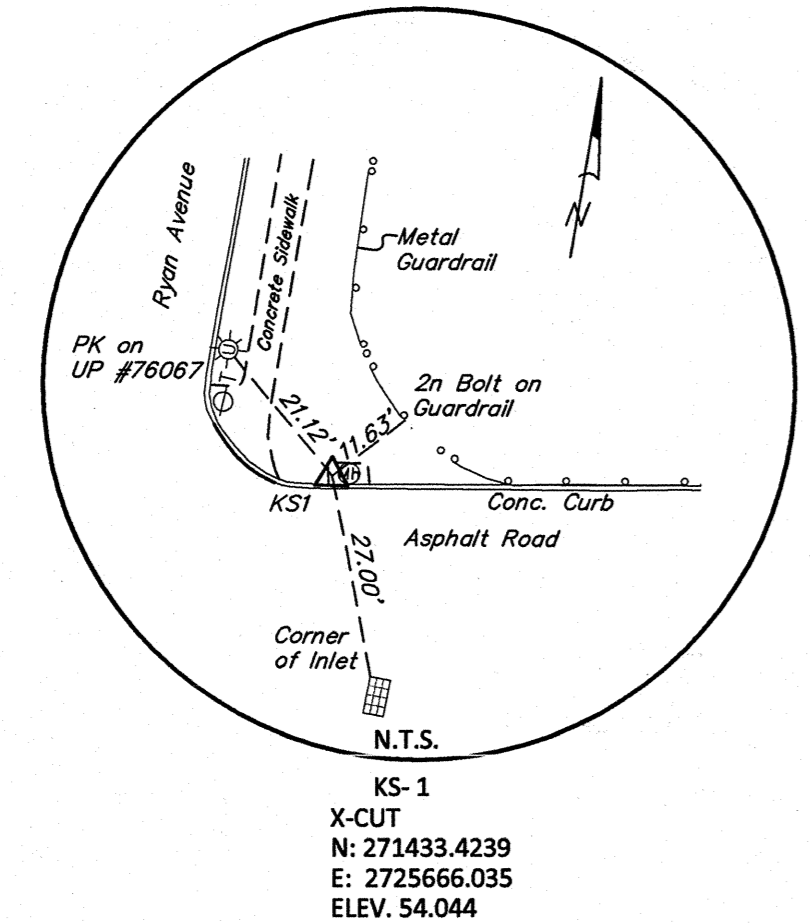
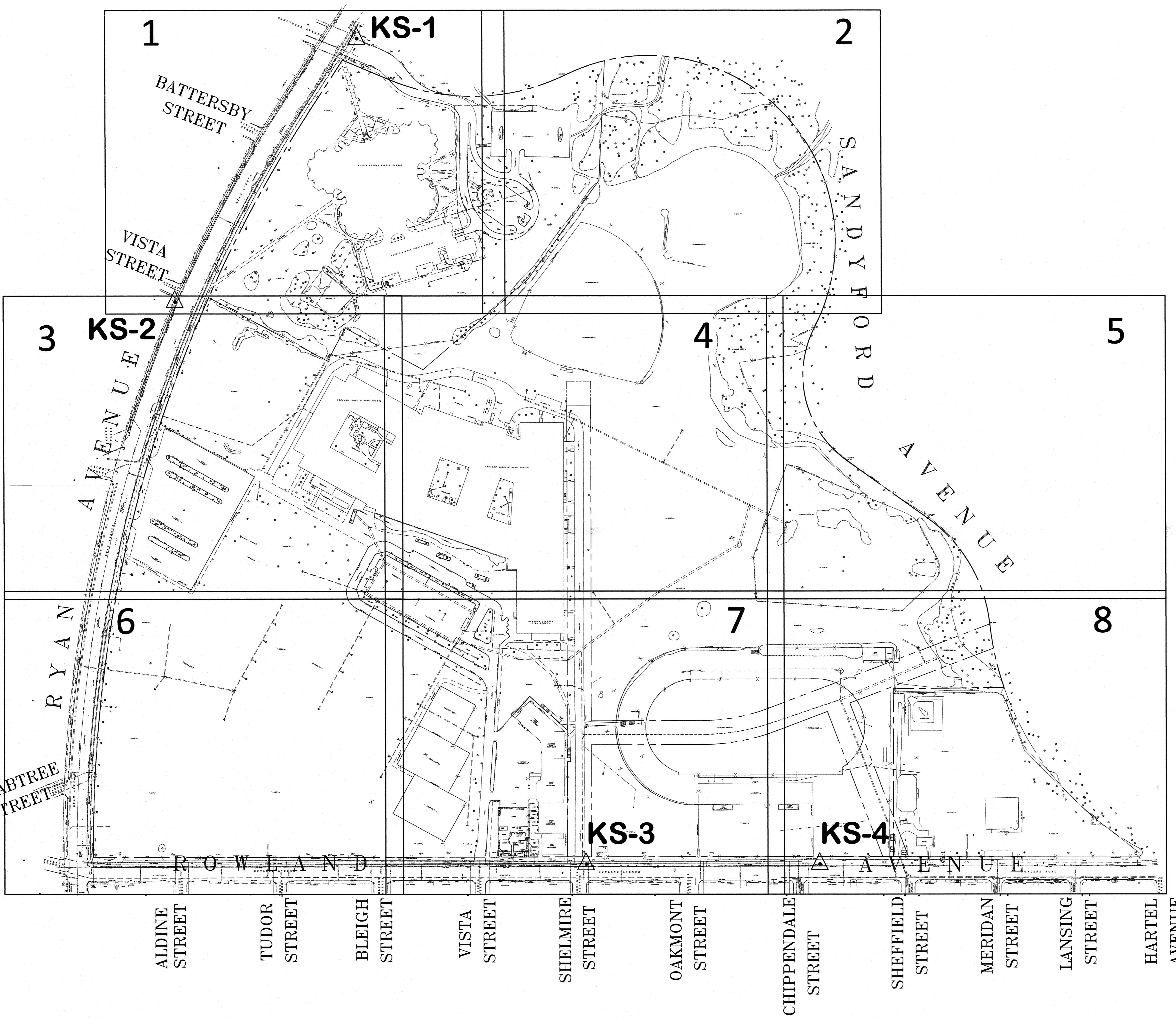
IT IS THE CONTRACTOR'S RESPONSIBILITY TO COMPLY WITH THE PENNSYLVANIA ACT 187 AND TO CONTACT THE "ONE CALL SYSTEM" THREE (3) WORKING DAYS (UNLESS OTHERWISE NOTED) PRIOR TO START OF CONSTRUCTION.

PENNSYLVANIA ONE CALL: 1-800-242-1776

PHILADELPHIA WATER DEPARTMENT 1101 MARKET STREET, 2nd FLOOR PHILADELPHIA, PENNSYLVANIA 19107 (215) 981-8970	VERIZON 900 RACE STREET PHILADELPHIA, PENNSYLVANIA 19107 (215) 351-8947
PHILADELPHIA GAS WORKS 800 W. MONTGOMERY AVENUE, 3RD FLOOR PHILADELPHIA, PENNSYLVANIA 19122 (215) 984-6708	COMCAST 1351 S. COLUMBUS BOULEVARD PHILADELPHIA, PENNSYLVANIA 19147 (215) 952-4935
PECO-CONSTRUCTION DEPARTMENT 2301 MARKET STREET PHILADELPHIA, PENNSYLVANIA 19103 (215) 731-3264	

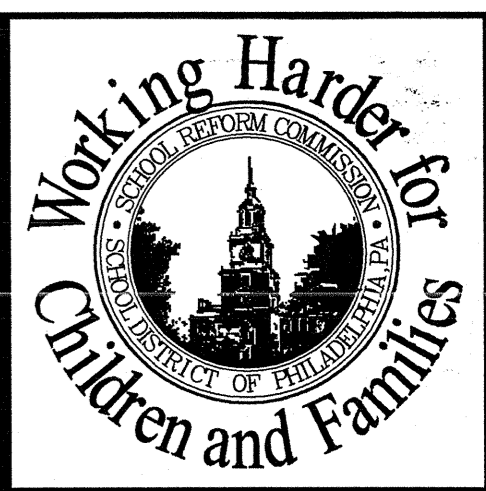
**LEGEND**

- GUY WIRE
- GAS VALVE
- WATER VALVE
- CLEAN OUT
- BOLLARD
- LIGHT POLE
- SANITARY MANHOLE
- WATER MANHOLE
- ELECTRIC MANHOLE
- TELEPHONE MANHOLE
- STORM MANHOLE
- GAS MANHOLE
- UTILITY POLE
- STANDPIPE
- FIRE HYDRANT
- INLET
- SIGN
- FLAG POLE
- TREE
- BUSH
- ELEC LINE
- WATER LINE
- 4" GAS
- TELEPHONE LINE
- 8" FIRE
- FENCE LINE
- OVERHEAD WIRES
- GUIDE RAIL





P.A.S.P.C.S.  
SOUTH ZONE  
NAD83



**KSE**  
CONSULTANTS  
KSE ENGINEERS, P.C.  
ENGINEERS/SURVEYORS/CONSTRUCTION MANAGERS  
PHILADELPHIA, PENNSYLVANIA 19106  
PHONE: 215.925.0425 • FAX: 215.925.0430

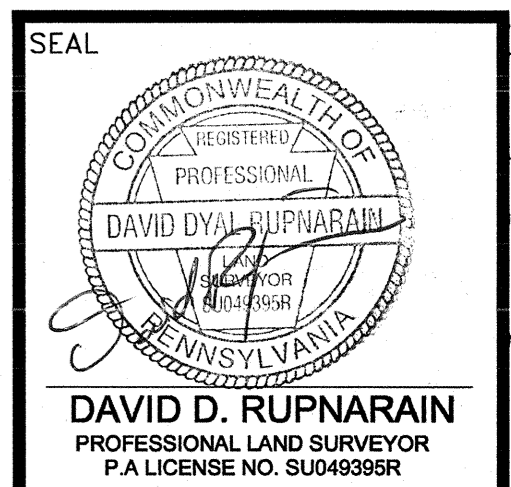
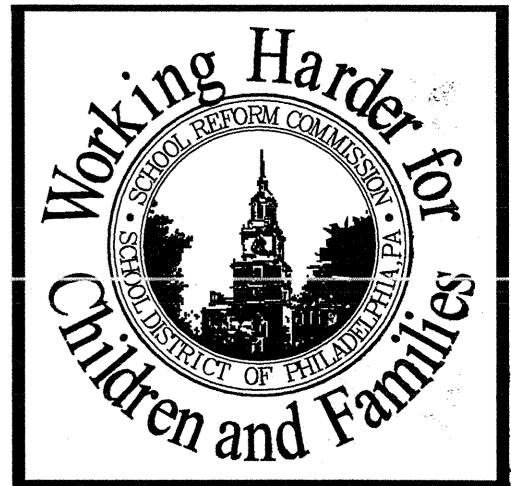
SCHOOL & LOCATION  
ABRAHAM LINCOLN HIGH SCHOOL 3801 RYAN AVENUE, PHILADELPHIA, PA  
AUSTIN MEEHAN MIDDLE SCHOOL 3801 RYAN AVENUE, PHILADELPHIA, PA  
PROJECT TITLE  
SITE SURVEY LINCOLN AND MEEHAN SCHOOLS  
DRAWING TITLE  
BOUNDARY AND TOPOGRAPHIC SURVEY  
APPROVED BY

SCHOOL DISTRICT OF PHILADELPHIA  
THE SCHOOL REFORM COMMISSION  
OFFICE OF CAPITAL PROGRAMS  
440 NORTH BROAD STREET  
PHILADELPHIA, PA 19130-4015  
215-400-6000/4021  
WWW.PHILAD.SD.PA

NO.	DATE	REVISION
9		
8		
7		
6		
5		
4		
3		
2		
1		

SPEC NO.	DATE
AS NOTED	4/6/2018
DRAWN BY	TYPE NO.
WC	
CHECKED BY	FILE NO.
EM	2016-1820-01

DRAWING NO.



**CONSULTANTS**

**KSE** **KS ENGINEERS, P.C.**  
 ENGINEERS/SURVEYORS/CONSTRUCTION MANAGERS  
 305 S. PENNSYLVANIA, 19106  
 PHILADELPHIA, PA 19106  
 PHONE: 215.925.0425 • FAX: 215.925.0430

**SCHOOL & LOCATION**  
 ABRAHAM LINCOLN HIGH SCHOOL 3301 RYAN AVENUE, PHILADELPHIA, PA  
 JUSTIN MEEHAN MIDDLE SCHOOL 3301 RYAN AVENUE, PHILADELPHIA, PA

**PROJECT TITLE**  
 SITE SURVEY LINCOLN AND MEEHAN SCHOOLS

**DRAWING TITLE**  
 BOUNDARY AND TOPOGRAPHIC SURVEY

APPROVED BY:

**SCHOOL DISTRICT OF PHILADELPHIA**  
**THE SCHOOL REFORM COMMISSION**

OFFICE OF CAPITAL PROGRAMS  
 PHILADELPHIA, PA 19130-6015  
 215.400.4750 FAX 215.400.4751  
 www.philadelpa.gov

CONTRACTOR TO VERIFY ALL CONDITIONS AND DIMENSIONS AT SITE

NO.	DATE	REVISION
9		
8		
7		
6		
5		
4		
3		
2		
1		

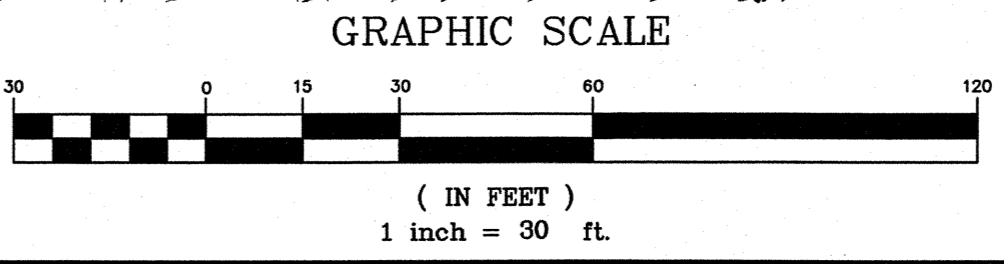
SPEC NO.	DATE
AS NOTED	4/6/2018
DRAWN BY	LOCATION NO.
WC	TYPE NO.
CHECKED BY	FILE NO.
EM	2016-1820-01

DRAWING NO.



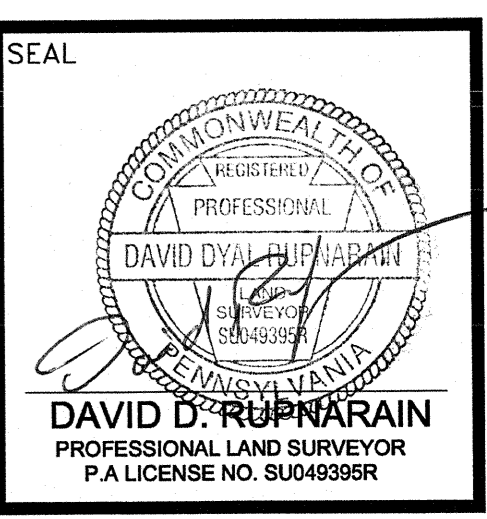
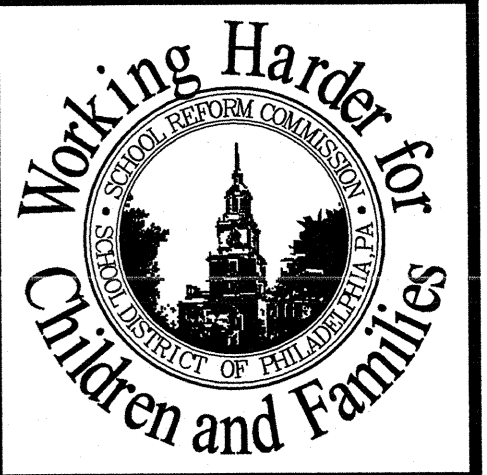
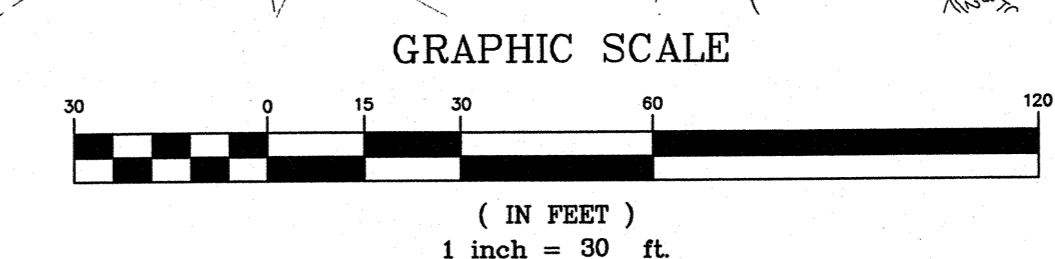
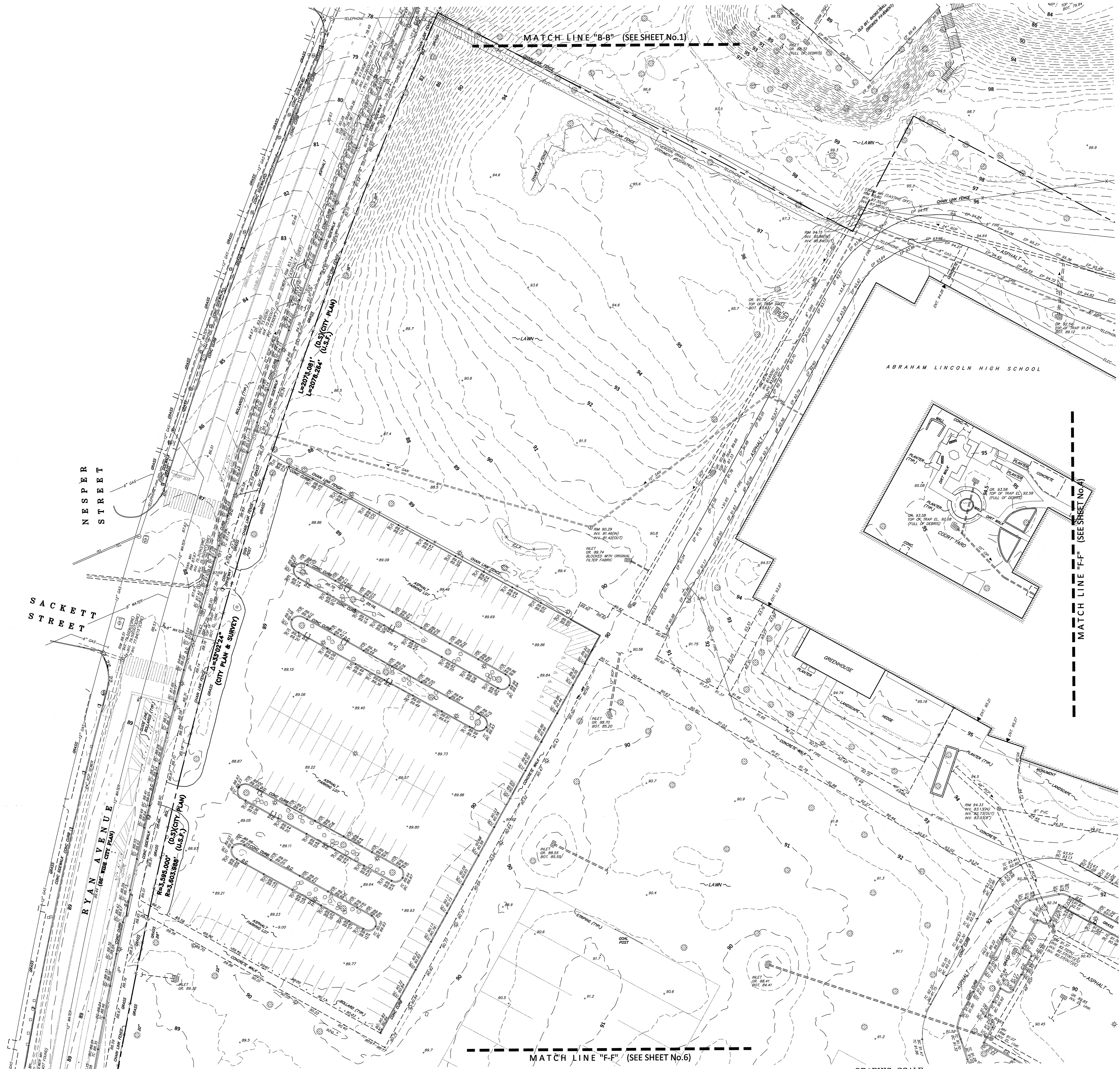
P.A.S.P.C.S.  
 SOUTH ZONE  
 NAD83

SANDYFORD AVENUE  
 (60' WIDE CITY PLAN)  
 (UNIMPROVED)





P.A.S.P.C.S.  
SOUTH ZONE  
NAD83



**KSE**  
CONSULTANTS  
**KSE ENGINEERS, P.C.**  
ENGINEERS-SURVEYORS-CONSTRUCTION MANAGERS  
PHILADELPHIA, PENNSYLVANIA 19106  
PHONE: 215.925.0425 • FAX: 215.925.0430

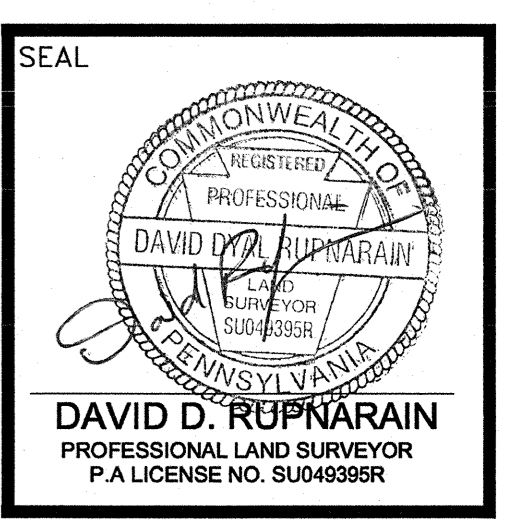
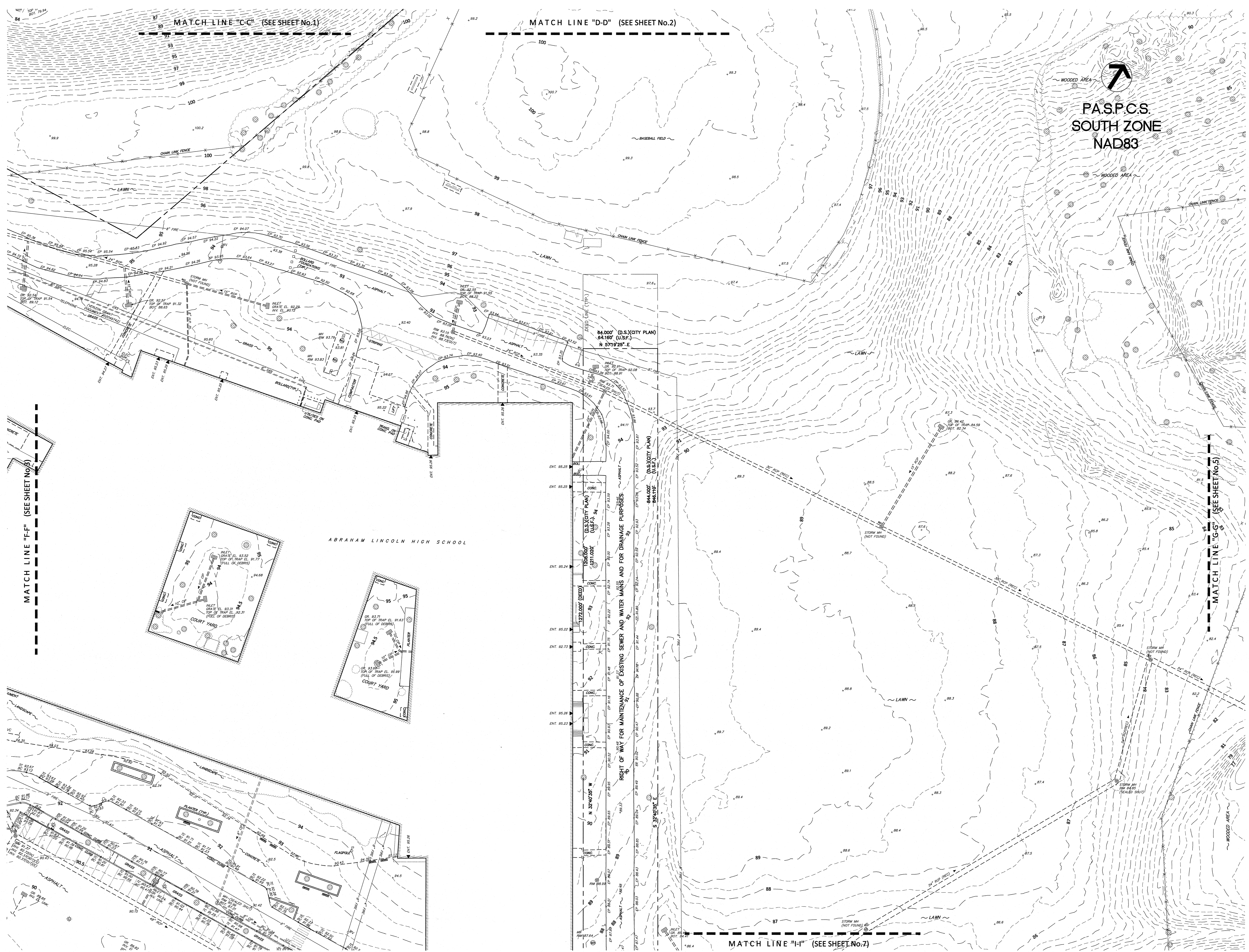
SCHOOL & LOCATION  
ABRAHAM LINCOLN HIGH SCHOOL 500 RYAN AVENUE PHILADELPHIA PA  
AUSTIN MEEHAN MIDDLE SCHOOL 500 RYAN AVENUE PHILADELPHIA PA  
PROJECT TITLE  
SITE SURVEY LINCOLN AND MEEHAN SCHOOLS  
DRAWING TITLE  
BOUNDARY AND TOPOGRAPHIC SURVEY  
APPROVED BY

SCHOOL DISTRICT OF PHILADELPHIA  
THE SCHOOL REFORM COMMISSION  
OFFICE OF CAPITAL PROGRAMS  
440 NORTH BRAD STREET  
PHILADELPHIA, PA 19130-4015  
215-400-0751  
WWW.PHILAD.SDRS

NO.	DATE	REVISION
9		
8		
7		
6		
5		
4		
3		
2		
1		

SPEC NO.	DATE
AS NOTED	4/6/2018
DRAWN BY	TYPE NO.
WC	
CHECKED BY	FILE NO.
EM	2016-1820-01

DRAWING NO.



**CONSULTANTS**

**KSE** ENGINEERS, P.C.  
 ENGINEERS-SURVEYORS-CONSTRUCTION MANAGERS  
 PHILADELPHIA, PENNSYLVANIA 19106  
 PHONE: 215.925.0425 • FAX: 215.925.0430

**SCHOOL & LOCATION**  
 ABRAHAM LINCOLN HIGH SCHOOL 500 RYAN AVENUE, PHILADELPHIA, PA  
 AUSTIN MEEHAN MIDDLE SCHOOL 500 RYAN AVENUE, PHILADELPHIA, PA

**PROJECT TITLE**  
 SITE SURVEY LINCOLN AND MEEHAN SCHOOLS

**DRAWING TITLE**  
 BOUNDARY AND TOPOGRAPHIC SURVEY

APPROVED BY

**SCHOOL DISTRICT OF PHILADELPHIA**  
**THE SCHOOL REFORM COMMISSION**

OFFICE OF CAPITAL PROGRAMS  
 440 NORTH BROAD STREET  
 PHILADELPHIA, PA 19130-4015  
 215.686.6000 • WWW.PHILAD.SD.org

CONTRACTOR TO VERIFY ALL CONDITIONS AND DIMENSIONS AT SITE

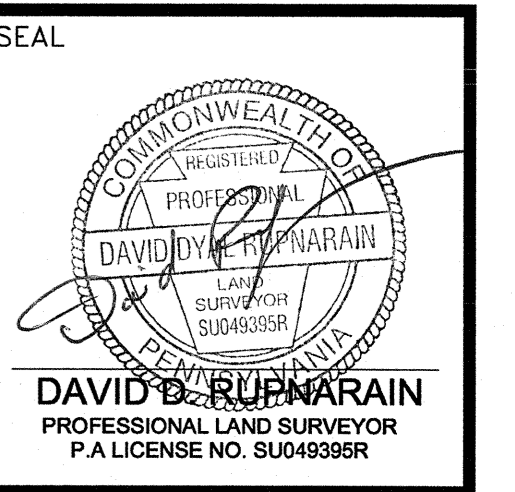
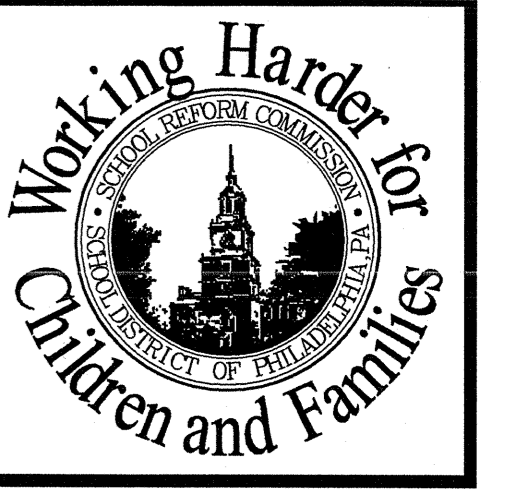
NO.	DATE	REVISION
9		
8		
7		
6		
5		
4		
3		
2		
1		

SPEC NO.	DATE
AS NOTED	4/6/2018
DRAWN BY	TYPE NO.
WC	
CHECKED BY	FILE NO.
EM	2016-1820-01

DRAWING NO.



P.A.S.P.C.S.  
SOUTH ZONE  
NAD83



**KSE**  
CONSULTANTS  
**KSE ENGINEERS, P.C.**  
ENGINEERS-SURVEYORS-CONSTRUCTION MANAGERS  
PHILADELPHIA, PENNSYLVANIA 19106  
PHONE: 215.925.0425 • FAX: 215.925.0430

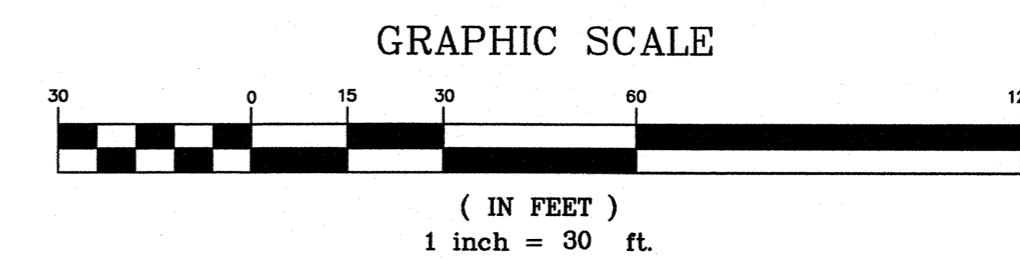
SCHOOL & LOCATION  
NORHAM LINCOLN HIGH SCHOOL 800 RYAN AVENUE PHILADELPHIA PA  
AUSTIN MEEHAN MIDDLE SCHOOL 3001 RYAN AVENUE PHILADELPHIA PA  
PROJECT TITLE  
**SITE SURVEY LINCOLN AND MEEHAN SCHOOLS**  
DRAWING TITLE  
**BOUNDARY AND TOPOGRAPHIC SURVEY**  
APPROVED BY

**SCHOOL DISTRICT OF PHILADELPHIA  
THE SCHOOL REFORM COMMISSION**  
OFFICE OF CAPITAL PROGRAMS  
440 NORTH BROAD STREET  
PHILADELPHIA, PA 19106  
215.400.4730 FAX 215.400.4731  
WWW.PHILADSO.ORG  
CONTRACTOR TO VERIFY ALL CONDITIONS AND DIMENSIONS AT SITE

NO.	DATE	REVISION
1		
2		
3		
4		
5		
6		
7		
8		
9		

SPEC NO.	DATE
AS NOTED	4/6/2018
DRAWN BY	LOCATION NO.
WC	
CHECKED BY	TYPE NO.
EM	
	FILE NO.
	2016-1820-01

DRAWING NO.

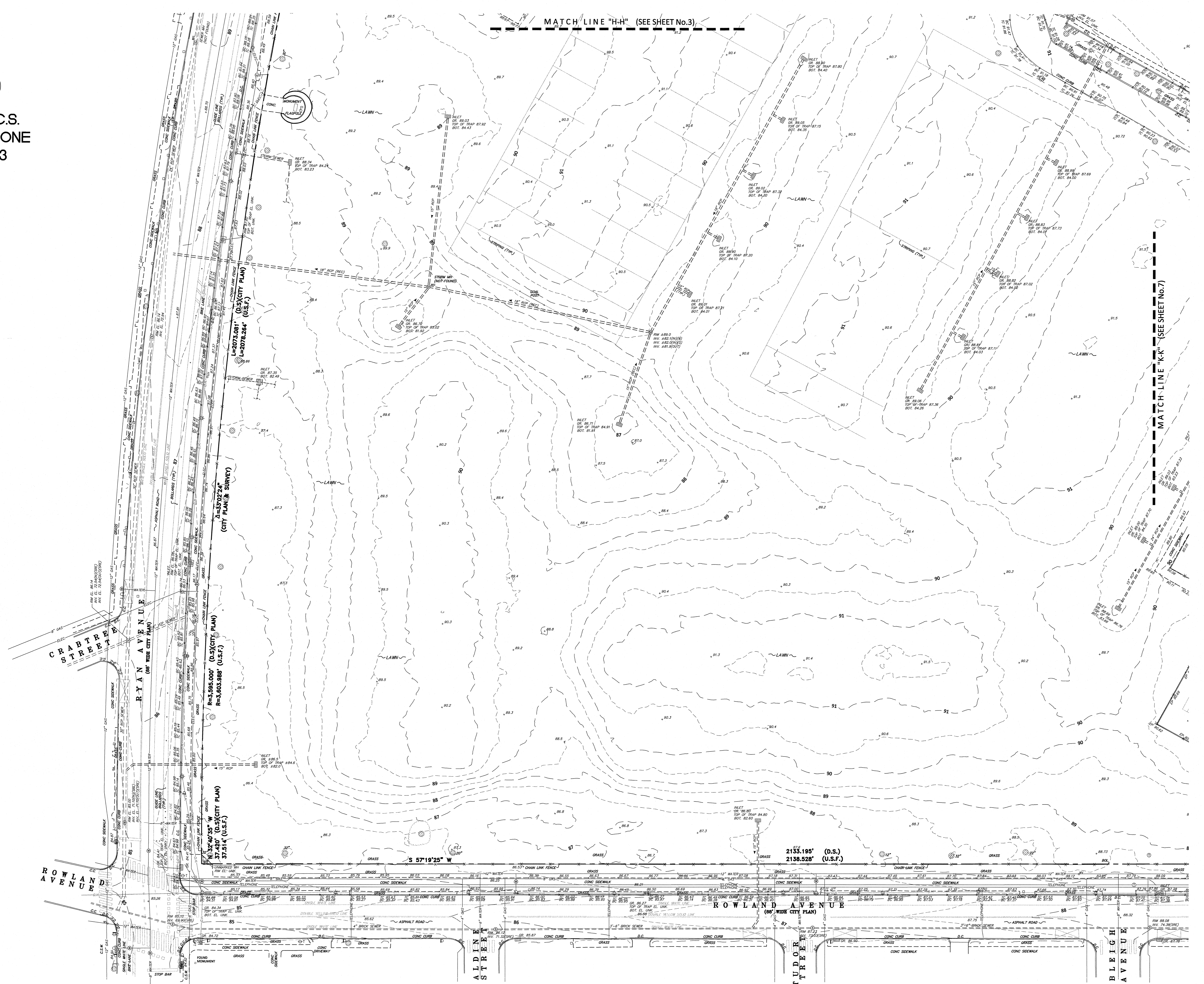




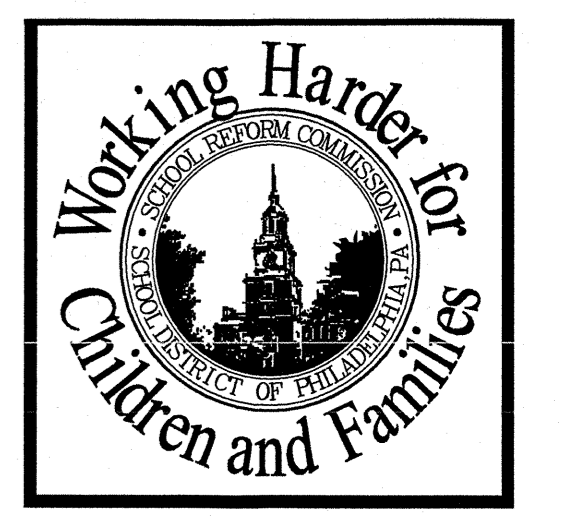
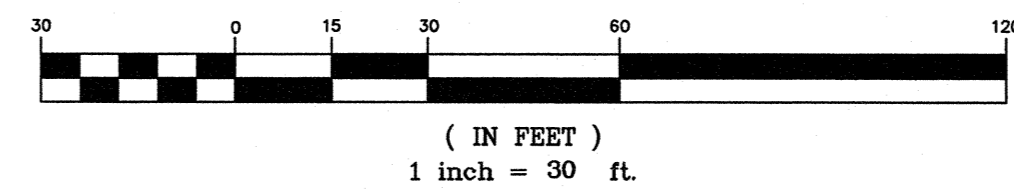
P.A.S.P.C.S.  
SOUTH ZONE  
NAD83

MATCH LINE "H-H" (SEE SHEET No.3)

MATCH LINE "K-K" (SEE SHEET No.7)



GRAPHIC SCALE



SEAL  
DAVID D. RUPNARIN  
PROFESSIONAL LAND SURVEYOR  
P.A. LICENSE NO. SU469599

CONSULTANTS  
**KSE**  
KSE ENGINEERS, P.C.  
ENGINEERS-SURVEYORS-CONSTRUCTION MANAGERS  
PHILADELPHIA, PENNSYLVANIA, 19106  
PHONE: 215.925.0425 • FAX: 215.925.0430

SCHOOL & LOCATION  
ABRAHAM LINCOLN HIGH SCHOOL 3301 RYAN AVENUE, PHILADELPHIA, PA  
AUSTIN MEEHAN MIDDLE SCHOOL 3301 RYAN AVENUE, PHILADELPHIA, PA  
PROJECT TITLE  
SITE SURVEY LINCOLN AND MEEHAN SCHOOLS  
DRAWING TITLE  
BOUNDARY AND TOPOGRAPHIC SURVEY  
APPROVED BY

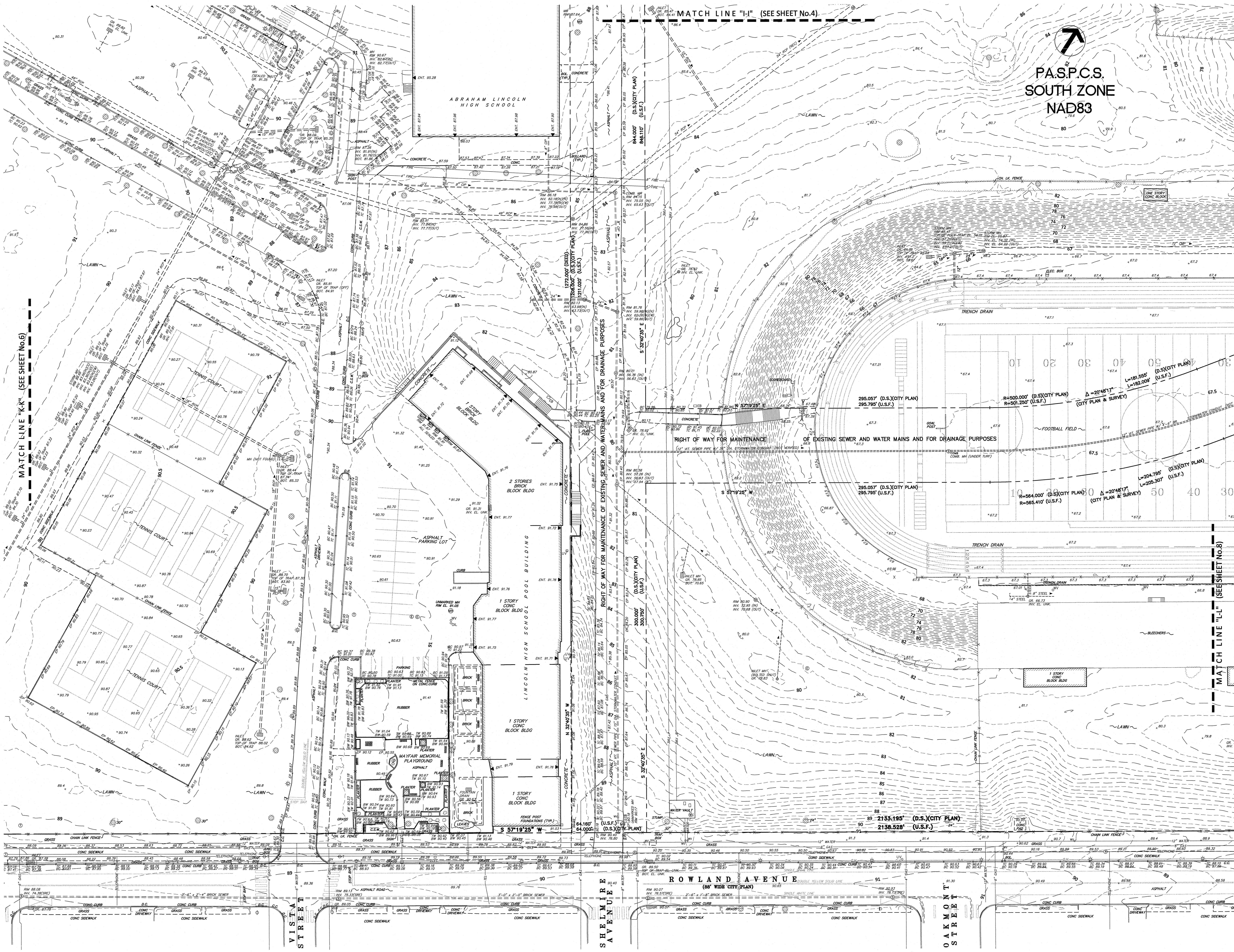
SCHOOL DISTRICT OF PHILADELPHIA  
THE SCHOOL REFORM COMMISSION  
OFFICE OF CAPITAL PROGRAMS  
PHILADELPHIA, PA 19106-5015  
215.400.4730 FAX 215.400.4731  
www.philadocs.org  
CONTRACTOR TO VERIFY ALL CONDITIONS AND DIMENSIONS AT SITE

NO.	DATE	REVISION
1		
2		
3		
4		
5		
6		
7		
8		
9		

SPEC. NO. DATE  
SCALE AS NOTED LOCATION NO.  
DRAWN BY TYPE NO.  
WC  
CHECKED BY FILE NO.  
EM 2016-1820-01

DRAWING NO.





SEAL

DAVID D. RUPPSTEIN  
PROFESSIONAL LAND SURVEYOR  
P.A. LICENSE NO. SU04939R

CONSULTANTS

**KSE**  
KS ENGINEERS, P.C.  
ENGINEERS • SURVEYORS • CONSULTANTS • DESIGN MANAGERS

PHILADELPHIA, PENNSYLVANIA 19106  
PHONE: 215.925.0425 • FAX: 215.925.0430

SCHOOL & LOCATION  
ABRAHAM LINCOLN HIGH SCHOOL 5301 IRVAN AVENUE, PHILADELPHIA, PA  
AUSTIN MEEHAN MIDDLE SCHOOL 5301 IRVAN AVENUE, PHILADELPHIA, PA

PROJECT TITLE  
SITE SURVEY, LINCOLN AND MEEHAN SCHOOLS

DRAWING TITLE  
BOUNDARY AND TOPOGRAPHIC SURVEY

APPROVED BY

SCHOOL DISTRICT OF PHILADELPHIA  
THE SCHOOL REFORM COMMISSION

OFFICE OF CAPITAL PROGRAMS  
440 NORTH BROAD STREET  
PHILADELPHIA, PA 19106-4015  
215-686-6000/4791  
WWW.PHILADELPHIA.SCHOOLSDISTRICT.COM

CONTRACTOR TO VERIFY ALL CONDITIONS AND DIMENSIONS AT SITE

09	08	07	06	05	04	03	02	01	NO.	DATE	REVISION

SPEC NO.	DATE
SCALE AS NOTED	LOCATION NO.
DRAWN BY WC	TYPE NO.
CHECKED BY TO	FILE NO. 2016-1820-01

DRAWING NO.



SEAL  
COMMONWEALTH OF PENNSYLVANIA  
PROFESSIONAL SURVEYOR  
**DAVID D. RUPNARAIN**  
PROFESSIONAL LAND SURVEYOR  
P.A. LICENSE NO. 58806666

CONSULTANTS  
**KSE**  
**KS ENGINEERS, P.C.**  
ENGINEERS-SURVEYORS • CONSTRUCTION MANAGERS  
351 S. PENNSYLVANIA 19106  
PHILADELPHIA, PA 19106  
PHONE: 215.925.0425 • FAX: 215.925.0430

SCHOOL & LOCATION  
ABRAHAM LINCOLN HIGH SCHOOL 3301 RYAN AVENUE PHILADELPHIA PA  
AUSTIN MEEHAN MIDDLE SCHOOL 3001 RYAN AVENUE PHILADELPHIA PA  
PROJECT TITLE  
**SITE SURVEY LINCOLN AND MEEHAN SCHOOLS**  
DRAWING TITLE  
**BOUNDARY AND TOPOGRAPHIC SURVEY**  
APPROVED BY:

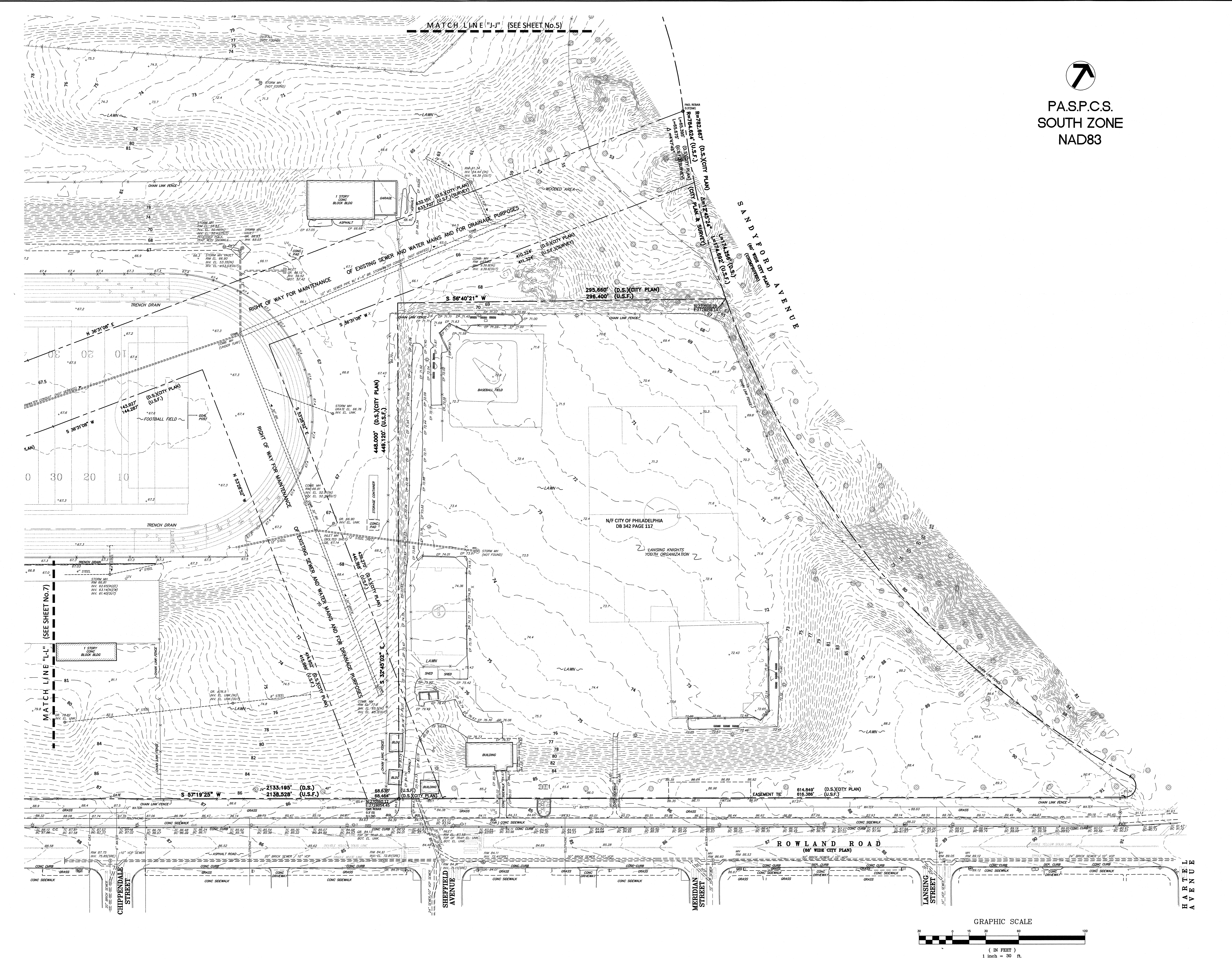
**SCHOOL DISTRICT OF PHILADELPHIA**  
**THE SCHOOL REFORM COMMISSION**  
OFFICE OF CAPITAL PROGRAMS  
PHILADELPHIA, PA 19103-1015  
215-600-4700 FAX 215-600-4731  
www.phildocs.org  
CONTRACTOR TO VERIFY ALL CONDITIONS AND DIMENSIONS AT SITE

NO.	DATE	REVISION

SPEC NO. \_\_\_\_\_ DATE 4/6/2018  
SCALE AS NOTED LOCATION NO. \_\_\_\_\_  
DRAWN BY \_\_\_\_\_ TYPE NO. \_\_\_\_\_  
CHECKED BY \_\_\_\_\_ FILE NO. \_\_\_\_\_  
EM 2016-1820-01

DRAWING NO. \_\_\_\_\_

SHEET 8 OF 8



P.A.S.P.C.S.  
SOUTH ZONE  
NAD83

GRAPHIC SCALE

