

**THE SCHOOL DISTRICT OF PHILADLPHIA
SCHOOL REFORM COMMISSION
Office of Capital Programs
440 North Broad Street, 3rd Floor – Suite 371
Philadelphia, PA 19130**

TELEPHONE: (215) 400-4730

Addendum No. 01

Subject: John Marshall Elementary School – Relighting Project
SDP Contract No. B-028 (C) of 2017/18

Location: John Marshall Elementary School
1500 Griscom Street,
Philadelphia, Pennsylvania 19124

This Addendum, dated September 20, 2018, shall modify and become part of the Contract Documents for the work of this project. Any items not mentioned herein, or affected by, shall be performed strictly in accordance with the original documents.

Drawing Revisions:

ED100 – Revised Keynote #1.
ED101 – Revised Keynote #1.
E501 – Added detail #5.
E601 – Revised light fixture schedule.

Bid RFIs:

Question#1: How are stair lights and hallway lights controlled?

Response - See updated lighting fixture schedule on drawing E601. The stair light fixtures shall be provided with integral motion/occupancy sensors for High/Low operation. The hallway light fixtures are controlled via occupancy sensors.

Question#2: Is it clear in drawings that the existing wiremold raceways need to be replaced as part of the re-wiring?

Response – The design intent is as follows: Keynote #1 on the demolition drawings have been updated to indicate removal of all accessible surface mounted raceways which includes any wiremold raceway. As noted on the new work drawings General Note H and Keynote #1, is all new lighting circuiting and controls wiring shall be installed in all new surface mounted EMT conduits and wiring within corridors, classrooms and offices, and rigid steel conduit within boiler rooms, mechanical rooms, and electrical rooms. Existing concealed conduits (EMT and RGS type only) which were previously used for the existing lighting circuiting and controls wiring may be reused if the existing conduit has been field inspected by the contractor and is in good condition for the new lighting circuiting and controls wiring. Existing surface mounted wiremold raceway may not be reused, it must be removed and replaced with new EMT or RGS conduit for wiring.

Question #3: ED100 Keynote 1 “Trace all circuits & label for reuse for new light fixtures”. E100 Keynote 1 “Provide new conduit & wiring for new light fixtures & controls.

These two notes seem to contradict one another.

- a. Do we provide new circuit wiring from the existing panels to each classroom? How many circuit to each room?
- b. There seems to be no concealed conduit to existing lights or switches, all wiring seems to be in surface mounted wiremold. Should we bid to replace all wiremold with new conduit and wiring?
- c. Corridor lights are switch on off at night from the breakers in the existing panels. Should we bid to re-wire to existing breakers with additional wiring to feed the new bodine ballast for emergency lights?

Response to Question 3a. – During the demolition phase, the contractor is responsible to trace all lighting circuits to determine the source panel board and breaker that is serving the lighting within each space. The existing lighting circuit in its entirety (conduit, surface mounted wire mold raceway, and wiring) shall be removed back to the existing source panel board. The existing breaker which was being utilized as a lighting circuit for the old light fixtures within each space shall be reused and new conduit and wiring shall be installed from the existing source panel board to the new light fixtures and control within each space.

Response to Question 3b. – The design intent is for all existing surface mounted conduit and raceway (wiremold) is to be removed and replace with all new surface mounted conduit (Type EMT and RGS) and copper wiring from the source panel board to each light fixture and controls device.

Response to Question 3c. – Correct, the existing corridor light fixtures do not have any local switch controls and are turned on/off by the circuit breaker. That is not the design intent for this project, the new corridor light fixtures are to be controls by occupancy sensors. The base design calls for low voltage occupancy sensors to turn on/off all the light fixtures within each corridor, the activation of one sensor shall turn on all light fixtures. In the future, the corridor light fixtures will not be controlled by the circuit breaker, it shall be controlled by the occupancy sensors. The emergency “bodine” battery ballast for each fixture shall be wired to the un-switched side of the local controls within the space to monitor the AC circuit and for continuous battery charging. A typical wiring diagram has been provided on E501.

End of Addendum

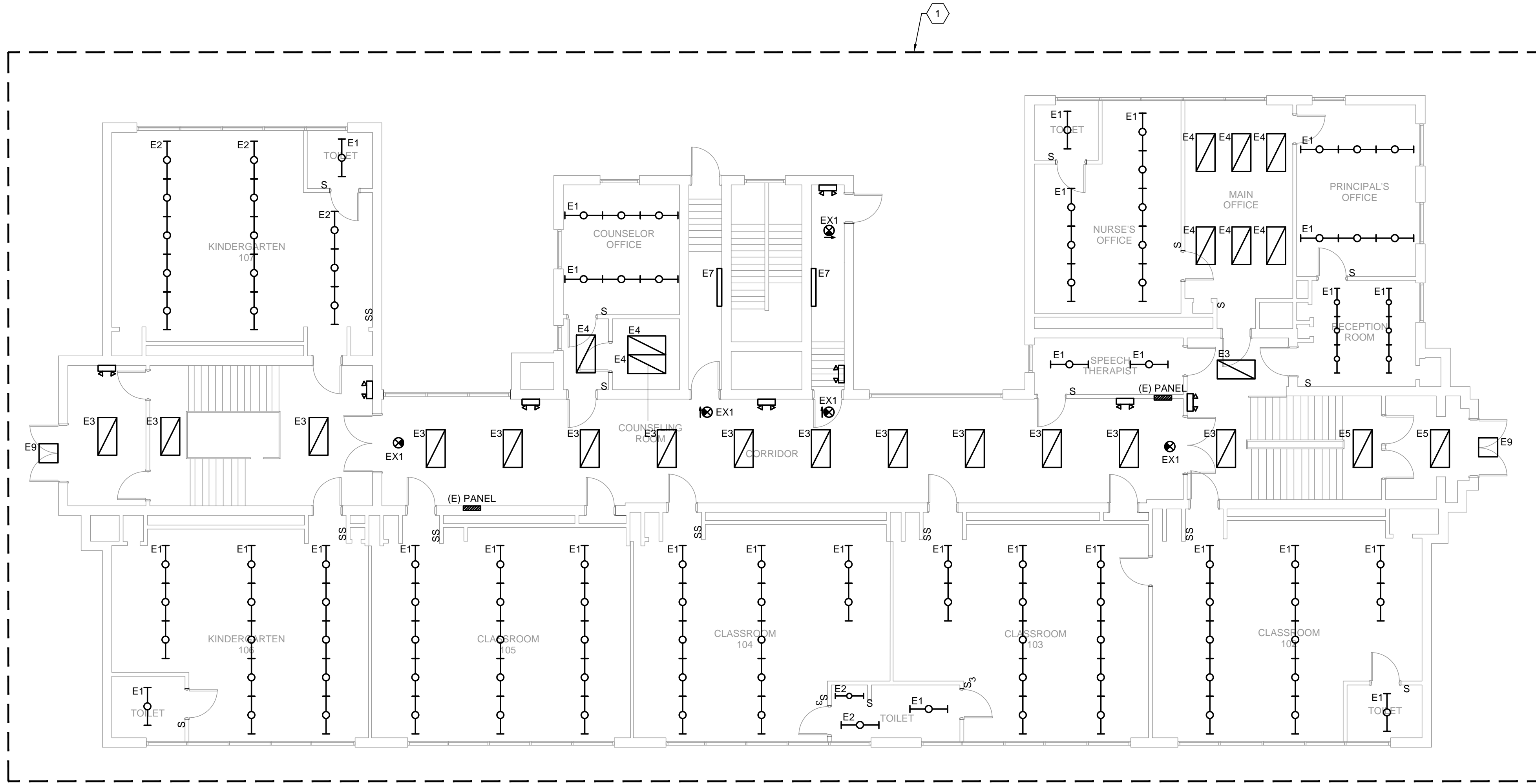
A

B

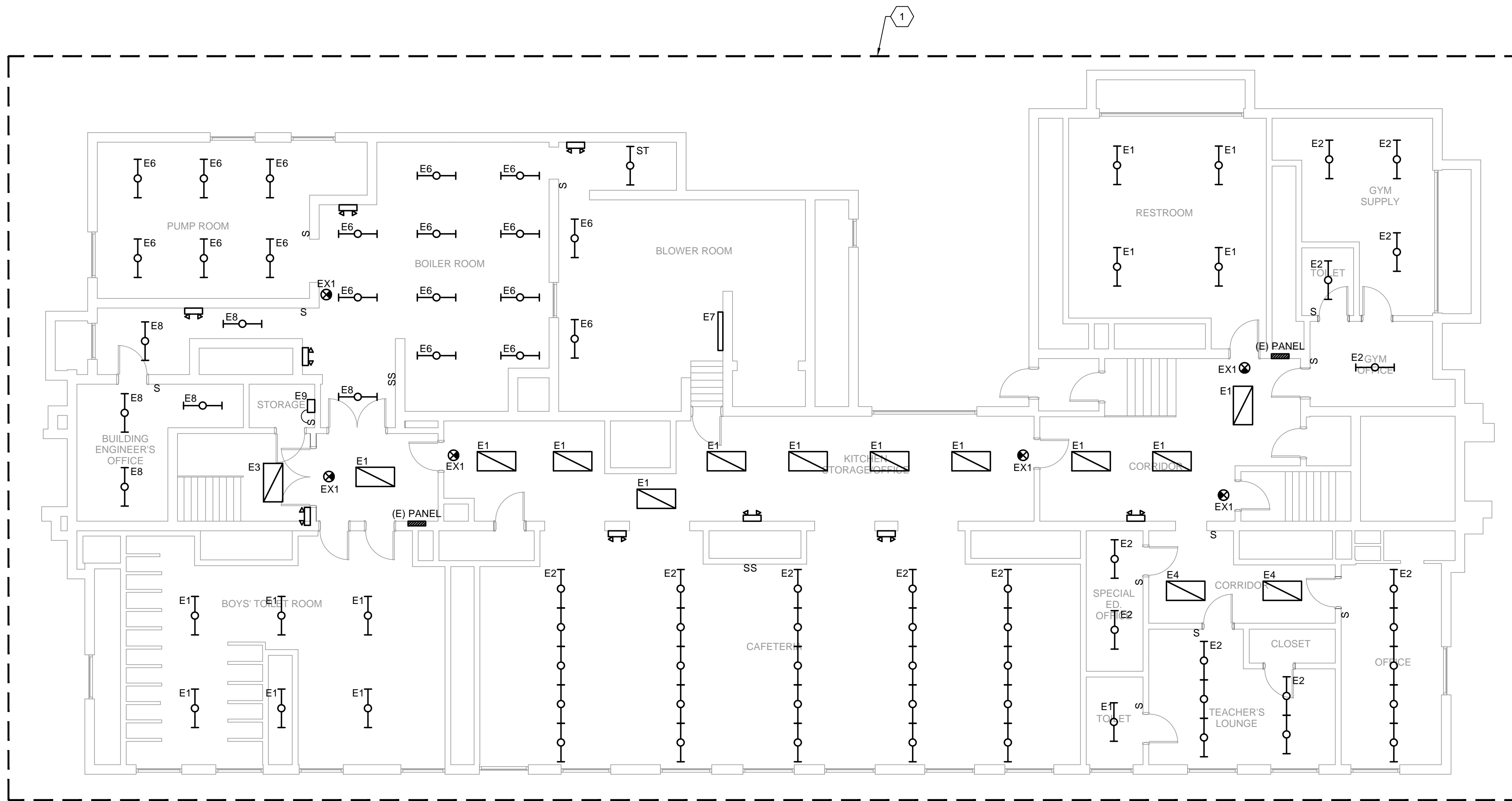
C

D

E



FIRST FLOOR DEMOLITION PLAN **2**
1/8" = 1'-0"



BASEMENT DEMOLITION PLAN **1**
1/8" = 1'-0"

GENERAL DEMOLITION NOTES

- A. COORDINATE ALL WORK CONCERNING EXISTING EQUIPMENT AND SERVICES TO REMAIN. DE-ENERGIZE CIRCUITS AND MAKE THEM SAFE AS REQUIRED. RECONNECT CIRCUITS THAT ARE TO REMAIN AND ARE DISRUPTED DURING DEMOLITION.
- B. REMOVE EXPOSED OR ACCESSIBLE WIRING TO EQUIPMENT OR OUTLETS TO BE REMOVED UNLESS OTHERWISE INDICATED. LABEL AND TERMINATE WIRING TO REMAIN.
- C. LEGALLY DISPOSE OF EQUIPMENT WHERE EXISTING EQUIPMENT IS INDICATED TO BE REMOVED. OFFER EQUIPMENT TO OWNER AND DISPOSE OF EQUIPMENT THE OWNER DOES NOT WISH TO RETAIN. PROVIDE DOCUMENTATION INDICATING LEGAL DISPOSAL OR RECYCLING OF MATERIALS REMOVED. RECYCLE FLUORESCENT AND HID LAMPS. PROVIDE DOCUMENTATION.
- D. WIRING INDICATED TO BE REMOVED OR SERVING EQUIPMENT TO BE REMOVED SHALL BE REMOVED BACK TO THE SOURCE OR TO THE NEXT JUNCTION POINT IF THE WIRING SERVES OTHER DEVICES THAT WILL REMAIN. CONDUIT OVER UNDISTURBED CEILINGS SHALL BE REMOVED UNLESS OTHERWISE INDICATED.
- E. RECONNECT EXISTING CIRCUITRY WHICH ORIGINATES OR PASSES THROUGH THE RENOVATED AREAS BUT SERVES OTHER AREAS NOT BEING RENOVATED. EXTEND THESE CIRCUITS AS NECESSARY TO EXISTING PANELBOARDS.
- F. COORDINATE WORK CONCERNING EXISTING EQUIPMENT AND SERVICES IN THE BUILDING. COORDINATE REQUIRED POWER INTERRUPTION WITH OWNER. INCLUDE COSTS FOR REQUIRED PREMIUM/OFF-HOURS TIME.
- G. VERIFY THE INTEGRITY AND CONDITION OF THE EXISTING BRANCH CIRCUIT WIRING THAT IS TO BE RE-USED. REPLACE WIRING FOUND TO BE NON-FUNCTIONAL.
- H. ALL EXISTING LIGHTING AND CONTROLS HAVE BEEN IDENTIFIED WHERE INFORMATION CAN BE CONFIRMED. CONTRACTOR IS REQUIRED TO FIELD TRACE ALL EXISTING LIGHTING CIRCUITS AND CONFIRM SOURCE PANEL BOARD.

KEY NOTES

- 1 DISCONNECT AND REMOVE ALL LIGHT FIXTURES AND SWITCHING CONTROLS. REMOVE ALL ACCESSIBLE SURFACE MOUNTED TRAYS AND WIRING BACK TO SOURCE PANEL BOARD OR NEXT ACTIVE JUNCTION BOX. FOR ALL CONCEALED CONDUIT/WIRING WITHIN WALLS, SLAB, OR CEILING, WIRING SHALL BE REMOVED. CONDUIT SHALL BE CUT AND CAPPED AIR/WATER TIGHT. CONTRACTOR SHALL CIRCUIT TRACE ALL LIGHTING CIRCUITS AND LABEL EXISTING LIGHTING CIRCUIT FOR REUSE FOR NEW LIGHT FIXTURES.



SEAL

NORR
One Penn Center
1615 Locust St.
Philadelphia, PA 19103
T 215.526.4849
F 215.526.4852
www.norr.com
Architecture - Interior Design - Engineering

SCHOOL & LOCATION
JOHN MARSHALL ELEMENTARY SCHOOL
4500 GRISCOM ST., PHILADELPHIA, PA 19124

PROJECT TITLE
RELIGHTING PROJECT

DRAWING TITLE
DEMOLITION LIGHTING PLAN
- BASEMENT AND FIRST FLOOR

APPROVED BY

SCHOOL DISTRICT OF PHILADELPHIA
THE SCHOOL REFORM COMMISSION

DEPARTMENT OF DESIGN AND CONSTRUCTION SERVICES
PHILADELPHIA, PA 19107-0015
215.400.4230 FAX 215.400.4751
www.phila.edu

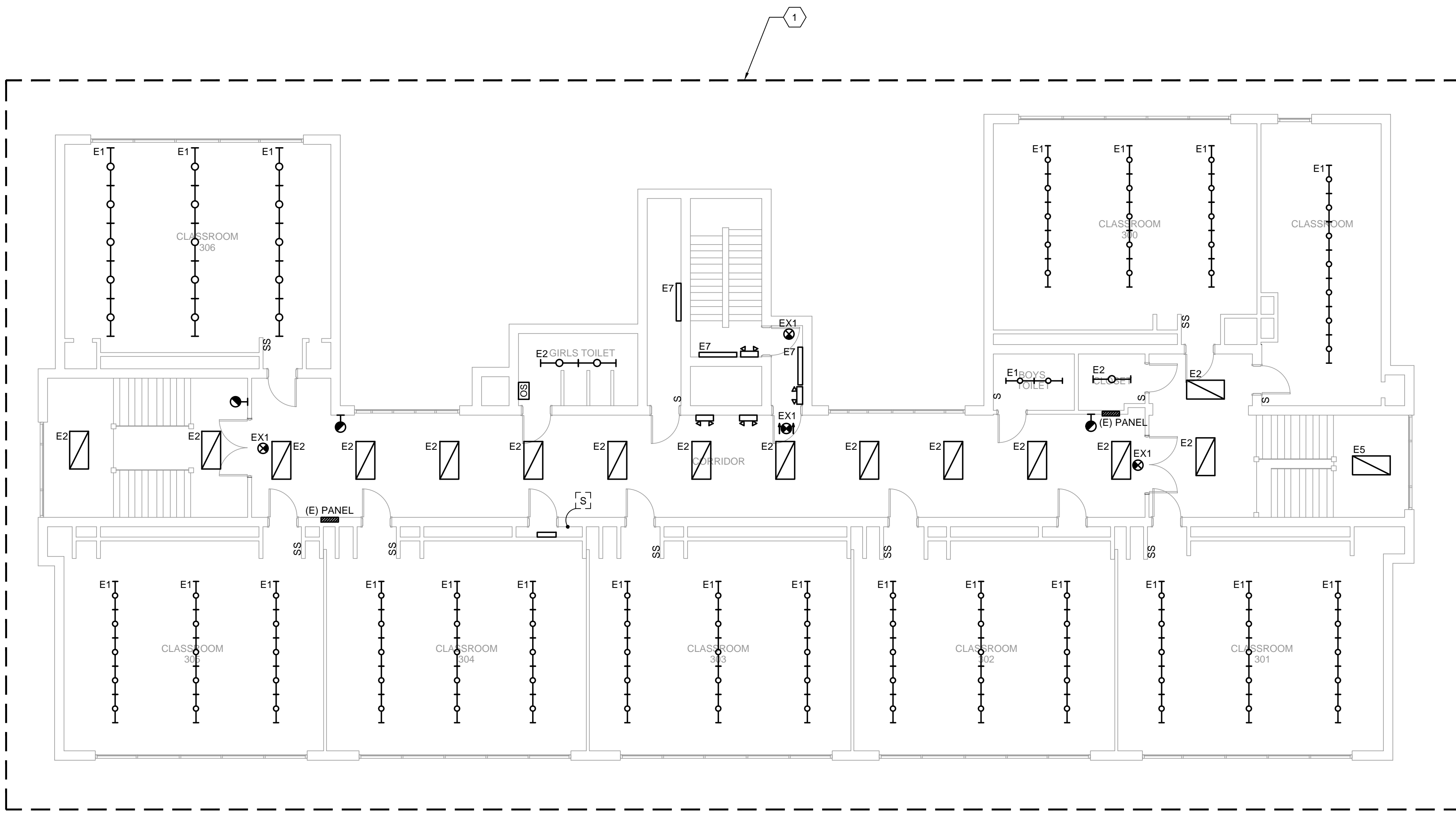
CONTRACTOR TO VERIFY ALL CONDITIONS AND DIMENSIONS AT SITE

9		
8		
7		
6		
5		
4	08.10.18	ADDITION 01
3	08.10.18	ISSUE FOR SUBMISSION
2	02.24.18	ISSUE FOR SUBMISSION
1	04.13.18	ISSUE FOR SUBMISSION
		NO. DATE REVISION

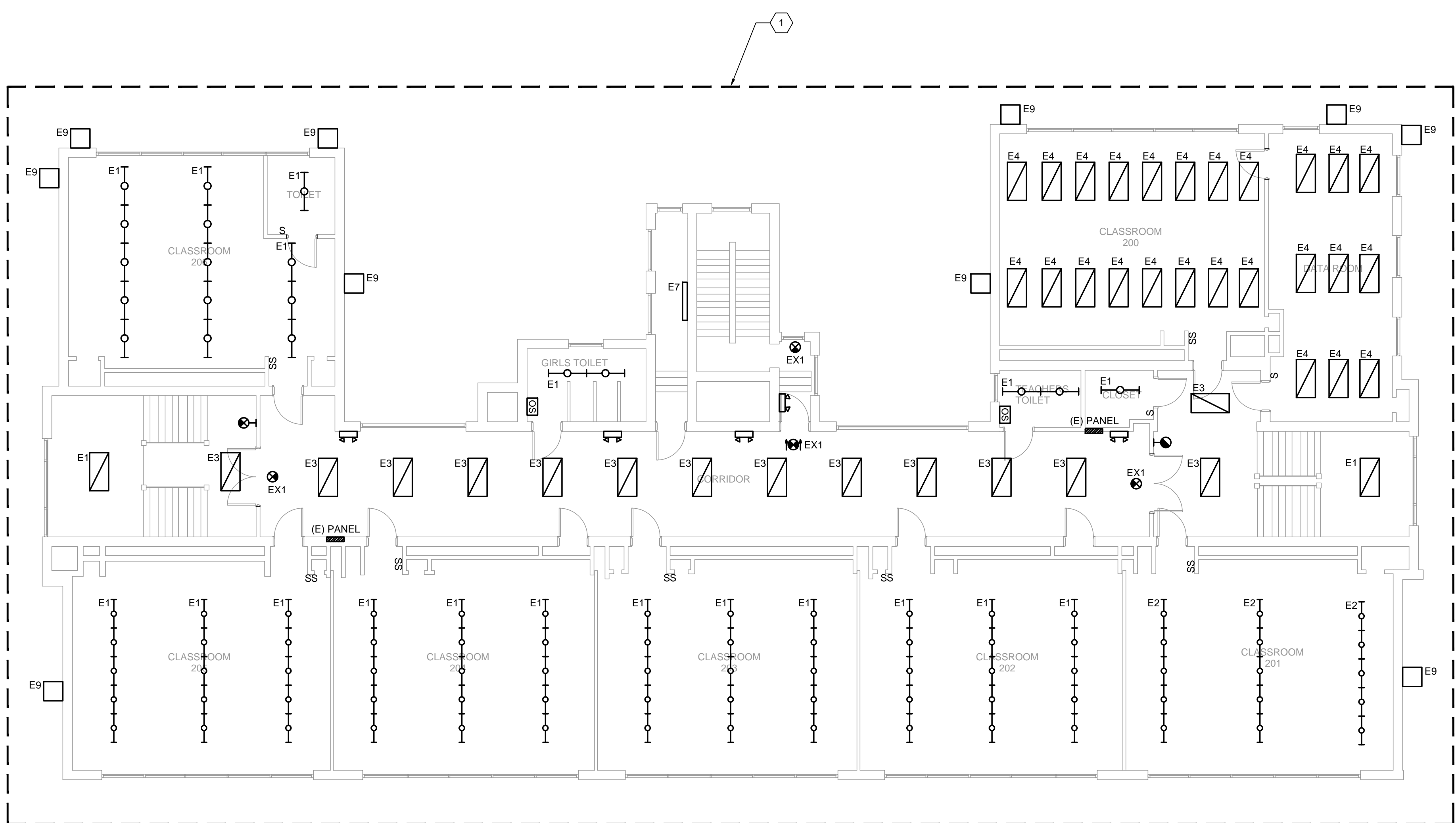
SPEC. NO.	B-028C 2017/18	DATE	08.10.18
SCALE	AS NOTED	LOCATION NO.	7360
DRAWN BY	BAS	TYPE NO.	
CHECKED BY	NVP	FILE NO.	1

DRAWING NO.
ED100

B-028C OF 2017/18
SHEET 2 OF 7



THIRD FLOOR DEMOLITION PLAN
1/8" = 1'-0" 2



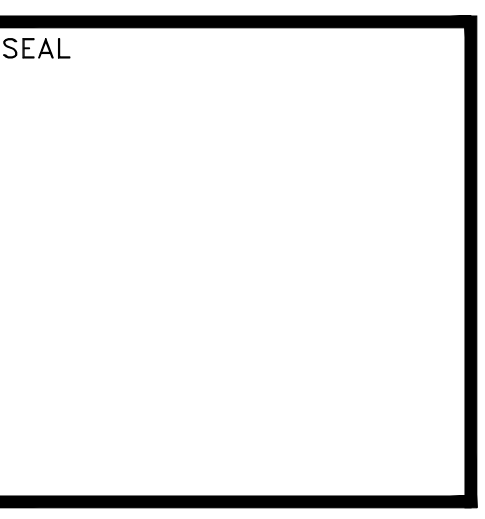
SECOND FLOOR DEMOLITION PLAN
1/8" = 1'-0" 1

GENERAL DEMOLITION NOTES

- A. COORDINATE ALL WORK CONCERNING EXISTING EQUIPMENT AND SERVICES TO REMAIN. DE-ENERGIZE CIRCUITS AND MAKE THEM SAFE AS REQUIRED. RECONNECT CIRCUITS THAT ARE TO REMAIN AND ARE DISRUPTED DURING DEMOLITION.
- B. REMOVE EXPOSED OR ACCESSIBLE WIRING TO EQUIPMENT OR OUTLETS TO BE REMOVED UNLESS OTHERWISE INDICATED. LABEL AND TERMINATE WIRING TO REMAIN.
- C. LEGALLY DISPOSE OF EQUIPMENT WHERE EXISTING EQUIPMENT IS INDICATED TO BE REMOVED. OFFER EQUIPMENT TO OWNER AND DISPOSE OF EQUIPMENT THE OWNER DOES NOT WISH TO RETAIN. PROVIDE DOCUMENTATION INDICATING LEGAL DISPOSAL OR RECYCLING OF MATERIALS REMOVED. RECYCLE FLUORESCENT AND HID LAMPS. PROVIDE DOCUMENTATION.
- D. WIRING INDICATED TO BE REMOVED OR SERVING EQUIPMENT TO BE REMOVED SHALL BE REMOVED BACK TO THE SOURCE OR TO THE NEXT JUNCTION POINT IF THE WIRING SERVES OTHER DEVICES THAT WILL REMAIN. CONDUIT OVER UNDISTURBED CEILINGS SHALL BE REMOVED UNLESS OTHERWISE INDICATED.
- E. RECONNECT EXISTING CIRCUITRY WHICH ORIGINATES OR PASSES THROUGH THE RENOVATED AREAS BUT SERVES OTHER AREAS NOT BEING RENOVATED. EXTEND THESE CIRCUITS AS NECESSARY TO EXISTING PANELBOARDS.
- F. COORDINATE WORK CONCERNING EXISTING EQUIPMENT AND SERVICES IN THE BUILDING. COORDINATE REQUIRED POWER INTERRUPTION WITH OWNER. INCLUDE COSTS FOR REQUIRED PREMIUM/OFF-HOURS TIME.
- G. VERIFY THE INTEGRITY AND CONDITION OF THE EXISTING BRANCH CIRCUIT WIRING THAT IS TO BE RE-USED. REPLACE WIRING FOUND TO BE NON-FUNCTIONAL.
- H. ALL EXISTING LIGHTING AND CONTROLS HAVE BEEN IDENTIFIED WHERE INFORMATION CAN BE CONFIRMED. CONTRACTOR IS REQUIRED TO FIELD TRACE ALL EXISTING LIGHTING CIRCUITS AND CONFIRM SOURCE PANEL BOARD.

KEY NOTES

1 DISCONNECT AND REMOVE ALL LIGHT FIXTURES AND SWITCHING CONTROLS. REMOVE ALL ACCESSIBLE SURFACE MOUNTED RACEWAYS AND WIRING BACK TO SOURCE PANEL BOARD OR NEXT ACTIVE JUNCTION BOX. FOR ALL CONCEALED CONDUIT/WIRING WITHIN WALLS, SLAB, OR CEILING, WIRING SHALL BE REMOVED. CONDUIT SHALL BE CUT AND CAPPED AIR/WATER TIGHT. CONTRACTOR SHALL CIRCUIT TRACE ALL LIGHTING CIRCUITS AND LABEL EXISTING LIGHTING CIRCUIT FOR REUSE FOR NEW LIGHT FIXTURES.



NORR
CONSULTANTS
One Penn Center
1611 Locust St.
Philadelphia, PA 19103
T 215.526.4849
F 215.526.4852
www.norr.com
Architecture - Interior Design - Engineering

SCHOOL & LOCATION
JOHN MARSHALL ELEMENTARY SCHOOL
4500 GRISCOM ST., PHILADELPHIA, PA 19124

PROJECT TITLE
RELIGHTING PROJECT

DRAWING TITLE
DEMOLITION LIGHTING PLAN
- SECOND AND THIRD FLOOR

APPROVED BY

SCHOOL DISTRICT OF PHILADELPHIA
THE SCHOOL REFORM COMMISSION

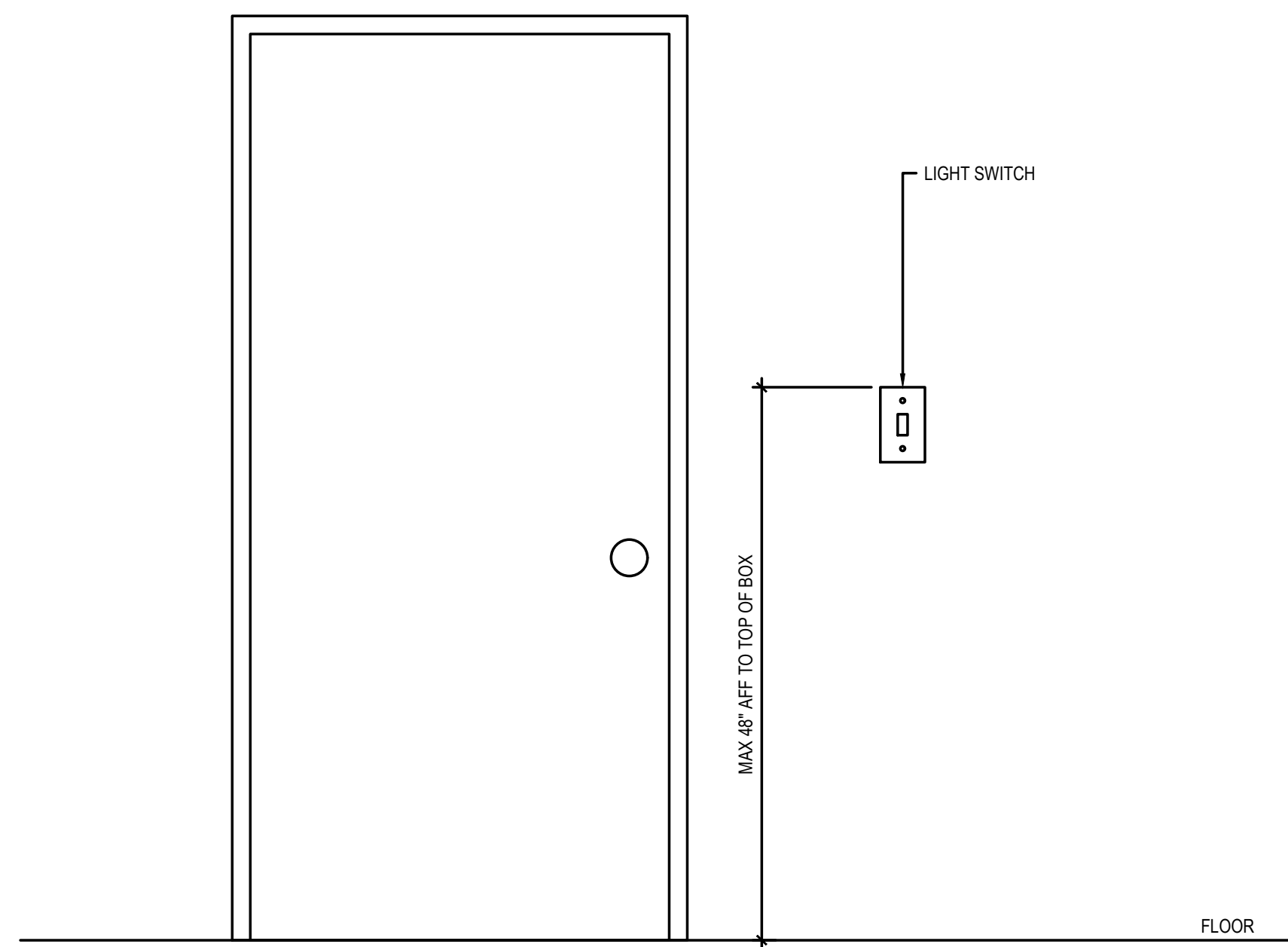
DEPARTMENT OF DESIGN AND CONSTRUCTION SERVICES
PHILADELPHIA, PA 19107-4015
215.400.4230 FAX 215.400.4751
www.phila.edu

CONTRACTOR TO VERIFY ALL CONDITIONS AND DIMENSIONS AT SITE

9			
8			
7			
6			
5			
4	08.10.18	ADDENDUM 01	
3	08.10.18	ISSUE 02 SUBMISSION	
2	02.24.18	ISSUE 01 SUBMISSION	
1	04.13.18	ISSUE 00 SUBMISSION	
			NO. DATE REVISION

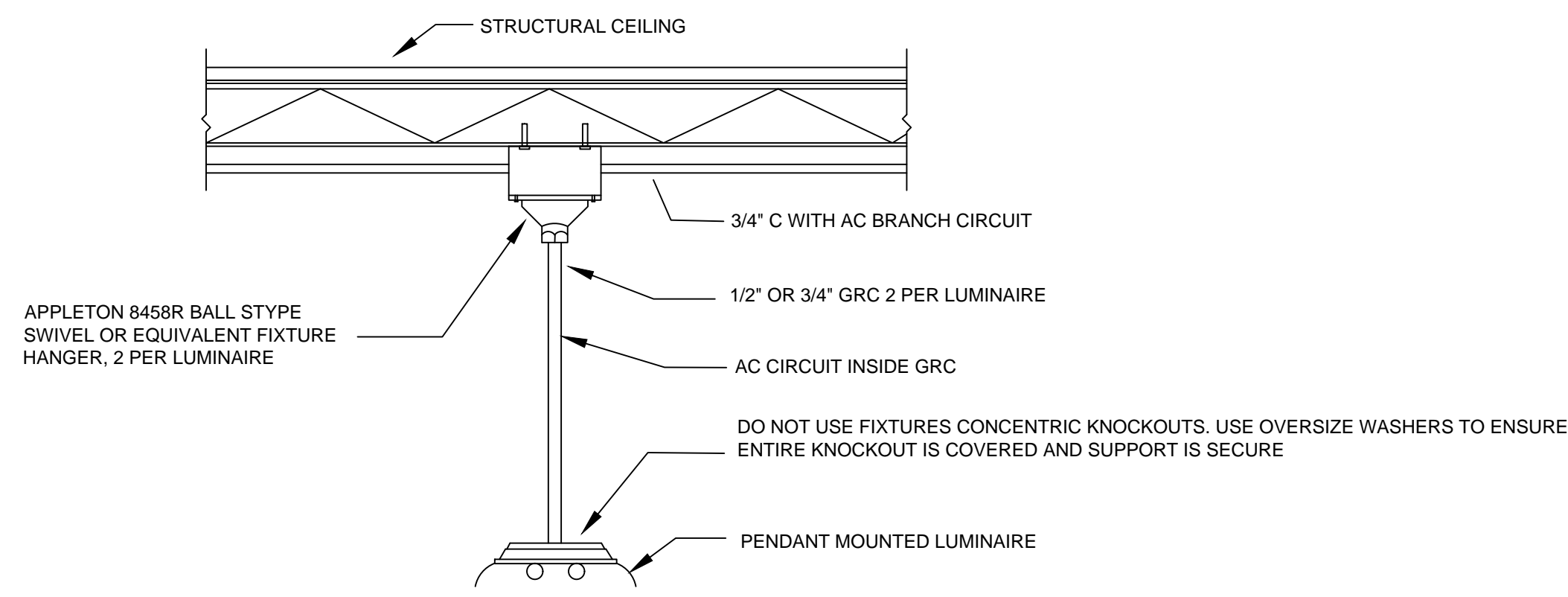
SPEC NO.	B-028C 2017/18	DATE	08.10.18
SCALE	AS NOTED	LOCATION NO.	7360
DRAWN BY	BAS	TYPE NO.	
CHECKED BY	NVP	FILE NO.	1

DRAWING NO.
ED101



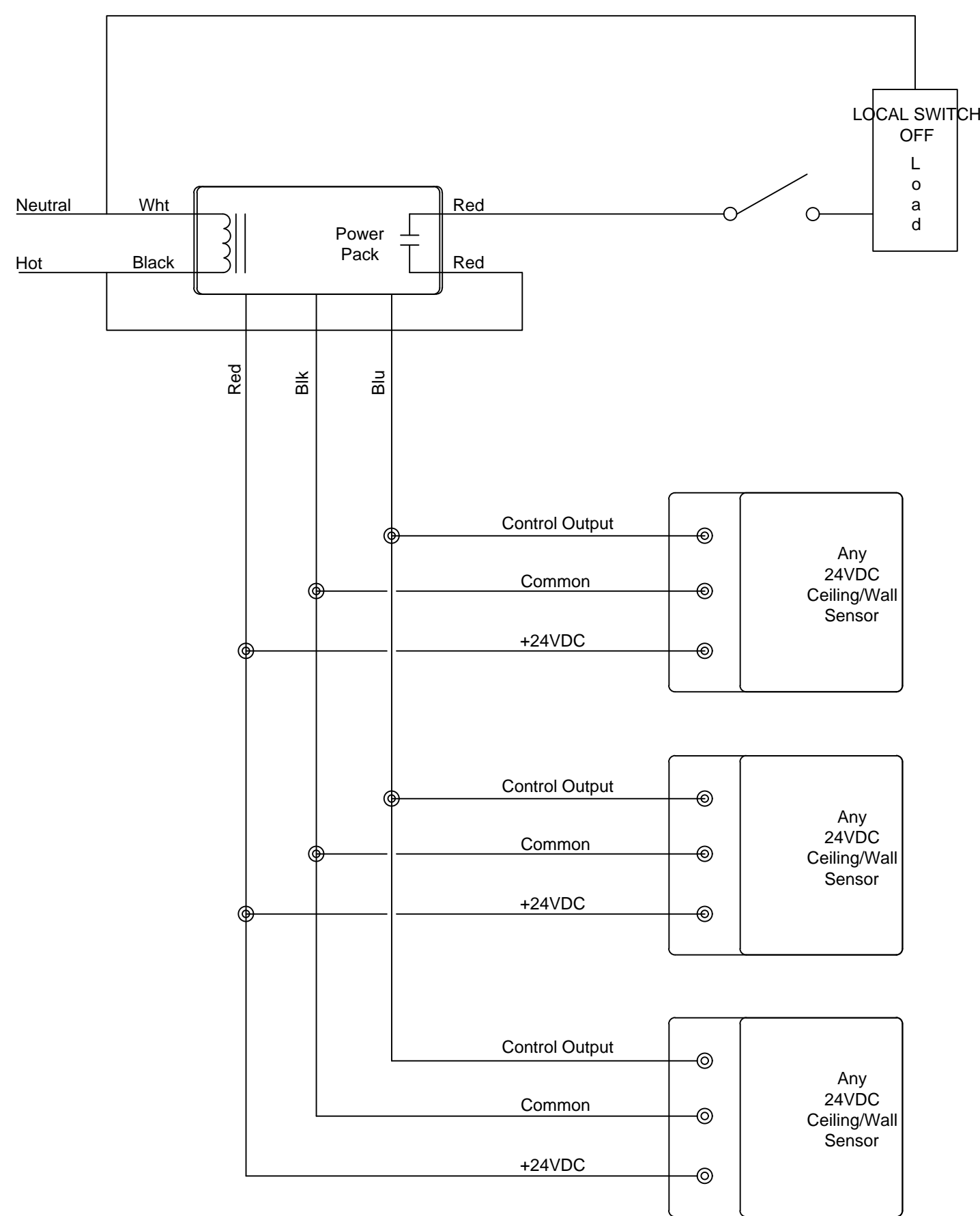
NOTE: THIS DETAIL ONLY INDICATES TYPICAL MOUNTING HEIGHT OF DEVICES. REFER TO PLAN DRAWINGS FOR EXACT MOUNTING LOCATION OF DEVICES.

TYPICAL MOUNTING HEIGHTS DETAIL
NTS 1



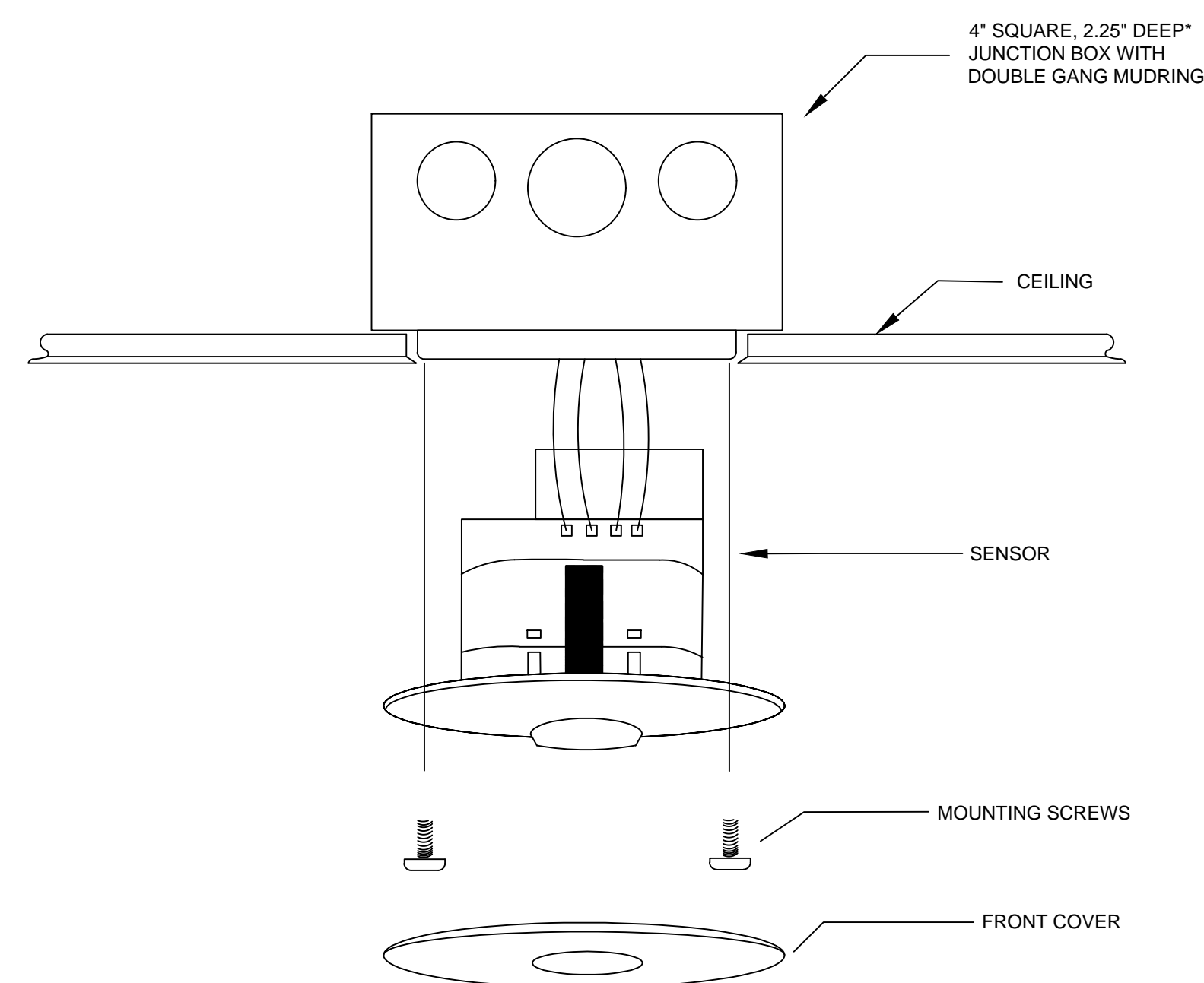
DETAIL NOTES:
CONTRACTOR SHALL PROVIDE ALL NECESSARY SUPPORT HARDWARE TO MOUNT ALL OF THE LIGHT FIXTURES IN THIS PROJECT AT THEIR LOCATIONS SHOWN ON THE DRAWING PLANS

PENDANT LIGHT MOUNTING DETAIL
NTS 2

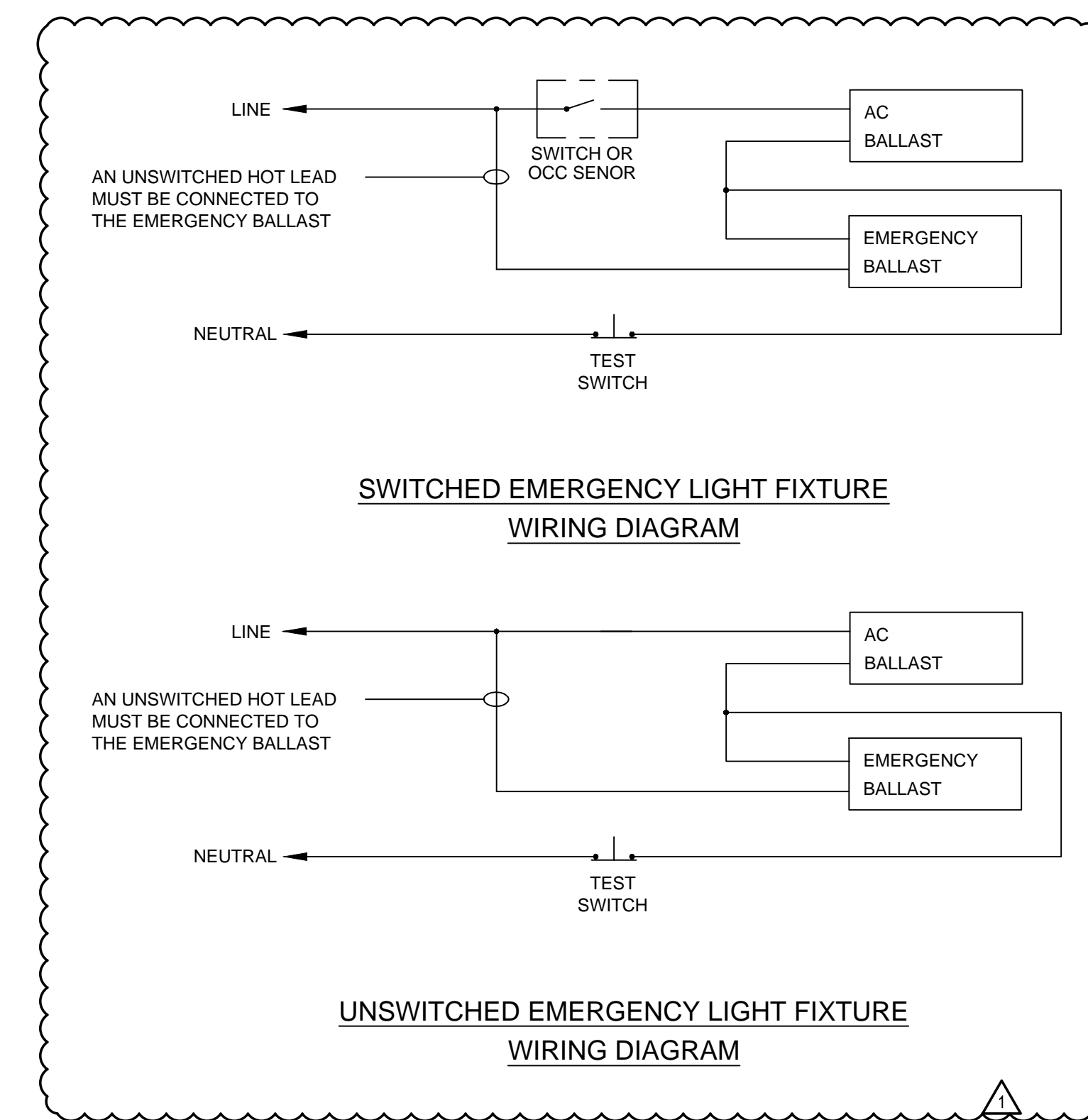


NOTE:
MAXIMUM NUMBER OF SENSORS PER POWER PACK DEPENDS ON THE MODEL OF SENSOR. SEE THE PRODUCT DATA SHEET TO DETERMINE THE SPECIFIC CURRENT CONSUMPTION OF EACH SENSOR

OCCUPANCY SENSOR WITH LOW VOLTAGE OVERRIDE SWITCH WIRING DIAGRAM
NTS 3



TYPICAL CEILING MOUNTED OCCUPANCY SENSOR INSTALLATION DETAIL
NTS 4



EMERGENCY LIGHT FIXTURE WIRING DIAGRAM
NTS 5



SEAL

NORR
One Penn Center
1617 Locust St.
Philadelphia, PA 19103
T 215.525.4849
F 215.525.4852
www.norr.com
Architecture - Interior Design - Engineering

CONSULTANTS

SCHOOL & LOCATION
JOHN MARSHALL ELEMENTARY SCHOOL
4500 GRISCOM ST., PHILADELPHIA, PA 19124

PROJECT TITLE
RELIGHTING PROJECT

DRAWING TITLE
DETAILS

APPROVED BY

SCHOOL DISTRICT OF PHILADELPHIA
THE SCHOOL REFORM COMMISSION

DEPARTMENT OF DESIGN AND CONSTRUCTION SERVICES
PHILADELPHIA, PA 19107-4015
215-400-4230 FAX 215-400-4731
www.phila.edu

CONTRACTOR TO VERIFY ALL CONDITIONS AND DIMENSIONS AT SITE

9			
8			
7			
6			
5	4	08.20.18	ADDENDUM 01
4	3	08.10.18	POST CD SUBMISSION
3	2	02.24.18	SM CD SUBMISSION
2	1	04.13.18	POST CD SUBMISSION
1			

SPEC NO.	DATE
B-028C 2017/18	08.10.18
SCALE	LOCATION NO.
AS NOTED	7360
DRAWN BY	TYPE NO.
BAS	
CHECKED BY	FILE NO.
NVP	1

DRAWING NO.
E501

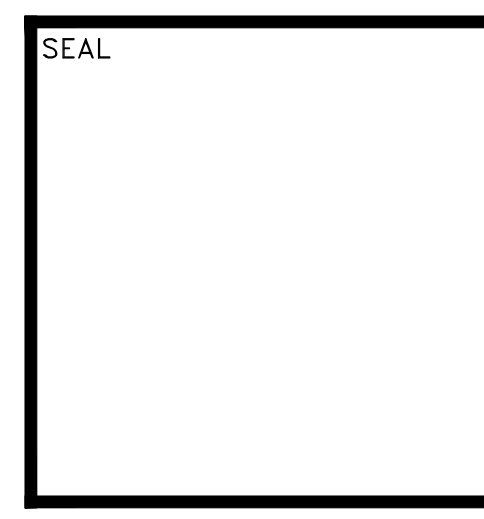
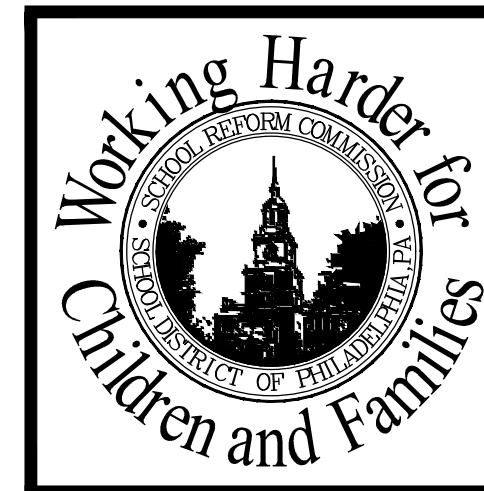
B-028C OF 2017/18
SHEET 6 OF 7

LIGHT FIXTURE SCHEDULE

FIXTURE		MANUFACTURER/CATALOG NO.	ALTERNATE MFR	ELECTRICAL		MOUNTING			LAMP(S)	REMARKS
TYPE	DESCRIPTION			MAX. WATTAGE	VOLTS	SURFACE	PENDANT	LAY-IN		
A	4' LED STRIP LIGHT - PENDANT MOUNTED	LITHONIA Z17N-48-4000LM-FST4VOLT-35K-40CRI-WH-SQ	COLUMBIA METALUX	34	120		●		-LED	-PROVIDE WITH STEM MOUNTING KIT
B	4' LED STRIP LIGHT - SURFACE MOUNTED	LITHONIA Z17N-48-4000LM-FST4VOLT-35K-40CRI-WH	COLUMBIA METALUX	34	120	●			-LED	-PROVIDE SURFACE MOUNTING KIT FOR ATC GRIDS AND HARD SURFACE CEILING
C	LED 2X4 - SURFACE MOUNTED	METALUX 2HGRLDS-38F1JUN-L835-CD-1 SURFACE MOUNT KIT SCA-48-B	COLUMBIA METALUX	36	120	●			-LED	
C-EM	LED 2X4 - SURFACE MOUNTED	METALUX 2HGRLDS-38F1JUN-L835-CD-1 SURFACE MOUNT KIT SCA-48-B NOTE: IN STAIRS PROVIDE WITH SVDP1 SENSOR	COLUMBIA METALUX	36	120	●			-LED	-PROVIDE WITH EMERGENCY BATTERY EL14W -IN STAIRS SVDP1 SENSORS SHALL BE PROGRAMMED FOR LIGHT FIXTURES TO BE 20% DIMMED WHEN NOT OCCUPIED.
D	LED 2X4 - LAY-IN	METALUX 2HGRLDS-38F1JUN-L835-CD-1	COLUMBIA METALUX	36	120			●	-LED	
D-EM	LED 2X4 - LAY-IN	METALUX 2HGRLDS-38F1JUN-L835-CD-1	COLUMBIA METALUX	36	120			●	-LED	-PROVIDE WITH EMERGENCY BATTERY EL14W
E	LED 2X4 - PENDANT MOUNTED	METALUX 2HGRLDS-38F1JUN-L835-CD-1 SURFACE MOUNT KIT SCA-48-B	COLUMBIA METALUX	36	120		●		-LED	-FIXTURE TO BE MOUNTED BELOW ALL PIPING AND DUCTWORK. STEM SETS TO BE FIELD CUT TO LENGTH AS REQUIRED FOR FIXTURE MOUNTING.
E-EM	LED 2X4 - PENDANT MOUNTED	METALUX 2HGRLDS-38F1JUN-L835-CD-1 SURFACE MOUNT KIT SCA-48-B NOTE: IN STAIRS PROVIDE WITH SVDP1 SENSOR	COLUMBIA METALUX	36	120		●		-LED	-PROVIDE EMERGENCY BATTERY PACK EL14W. FIXTURE TO BE MOUNTED BELOW ALL PIPING AND DUCTWORK. STEM SETS TO BE FIELD CUT TO LENGTH AS REQUIRED FOR FIXTURE MOUNTING. -IN STAIRS SVDP1 SENSORS SHALL BE PROGRAMMED FOR LIGHT FIXTURES TO BE 20% DIMMED WHEN NOT OCCUPIED.
F	LED EXTERIOR WALL MOUNTED FIXTURE WITH INTEGRAL PHOTOCELL	LITHONIA KAW LED-P3-40X-R14M-VOLT-DBLX-85W-EGS	COLUMBIA METALUX	70	120	●			-LED	-PROVIDE BIRD DETERRENT SPIRES, EXTERNAL GLARE SHIELD, AND PHOTOCELL
G	LED EXTERIOR WALL MOUNTED FIXTURE WITH INTEGRAL MOTION SENSOR. MOTION SENSOR WILL DIM LIGHTS WHEN UNOCCUPIED	KENALL ES48-48L38-CCC-DV-2H-CP-EL-MS	COLUMBIA METALUX	23	120	●			-LED	-MOTION SENSOR SHALL DIM DOWN LIGHTS TO 30% WHEN UNOCCUPIED.
W	LED VAPORTIGHT WALL MOUNTED	LITHONIA QLVYWM	COLUMBIA METALUX	15	120	●			-LED	
X1	HEAVY-DUTY STEEL LED EXIT SIGN, UNIVERSAL DIRECTIONAL CHEVRON KNOCKOUTS, MOUNTING TOP, END, BACK & EXTRA FACELATE	LITHONIA LUXA3-S-ELN	COLUMBIA METALUX	1	120	●			-LED	-PROVIDE WITH EMERGENCY BATTERY PACK
X2	LED EMERGENCY EGRESS WALL PACK WITH FORWARD THROW OPTICS, COLD WEATHER LISTED, DAMP & WET LOCATION LISTED.	LITHONIA AFN-DB-EXT-FWD	COLUMBIA METALUX	11	120	●			-LED	

LIGHTING FIXTURE NOTES:

- ALL FIXTURE TYPES SPECIFIED WITH LED LAMPS SHALL BE PROVIDED WITH ELECTRONIC MULTI-VOLT 0-10V DIMMING LED DRIVER.
- PROVIDE ALL HARDWARE REQUIRED FOR MOUNTING OF FIXTURE. CONTRACTOR TO FIELD VERIFY CEILING TYPES AND CONDITIONS PRIOR TO ORDERING FIXTURE MOUNTING KITS.
- PROVIDE ALL LED LAMPS WITH COLOR TEMPERATURE OF 3500 DEGREES KELVIN.
- MANUFACTURERS CATALOG NUMBERS ARE PROVIDED AS A BASIS OF DESIGN & LEVEL OF QUALITY REQUIRED. ALTERNATE MANUFACTURERS EQUIPMENT MUST MEET OR EXCEED THIS LEVEL OF QUALITY & PHYSICAL CHARACTERISTICS. ELECTRICAL CONTRACTOR IS RESPONSIBLE FOR ANY COORDINATION REQUIRED TO INSTALL ALTERNATE MANUFACTURERS EQUIPMENT. ACCEPTABLE ALTERNATE MANUFACTURERS ARE: HUBBEL, ACUTY, & COOPER.
- PRIOR TO SUBMISSION OF FIXTURE CUTS AND/OR PURCHASE, THE CONTRACTOR IS RESPONSIBLE TO REVIEW THE CONDITIONS OF INSTALLATION TO DETERMINE THAT NO CONFLICTS WILL EXIST FOR THE APPROPRIATE INSTALLATION OF THE FIXTURE.



NORR
 One Penn Center
 1611 Locust St
 Philadelphia, PA 19103
 T 215.526.4949
 F 215.526.4852
 www.norr.com
 Architecture - Interior Design - Engineering

SCHOOL & LOCATION
JOHN MARSHALL ELEMENTARY SCHOOL
 4500 GRISCOM ST., PHILADELPHIA, PA 19124

PROJECT TITLE
RELIGHTING PROJECT

DRAWING TITLE
SCHEDULES AND DIAGRAMS

APPROVED BY

SCHOOL DISTRICT OF PHILADELPHIA
 THE SCHOOL REFORM COMMISSION

DEPARTMENT OF DESIGN AND CONSTRUCTION SERVICES
 PHILADELPHIA, PA 19107-1015
 215-400-4230 FAX 215-400-4751
 www.philaed.org

CONTRACTOR TO VERIFY ALL CONDITIONS AND DIMENSIONS AT SITE

NO.	DATE	REVISION
9		
8		
7		
6		
5		
4	08.10.18	ADDENDUM 01
3	08.10.18	ISSUE FOR SUBMISSION
2	02.24.18	ISSUE FOR SUBMISSION
1	04.13.18	ISSUE FOR SUBMISSION

SPEC NO.	B-028C 2017/18	DATE	08.10.18
SCALE	AS NOTED	LOCATION NO.	7360
DRAWN BY	BAS	TYPE NO.	
CHECKED BY	NVP	FILE NO.	1

DRAWING NO.
E601

A
B
C
D
E