

**THE SCHOOL DISTRICT OF PHILADLPHIA
SCHOOL REFORM COMMISSION
Office of Capital Programs
440 North Broad Street, 3rd Floor – Suite 371
Philadelphia, PA 19130**

TELEPHONE: (215) 400-4730

Addendum No. 01

Subject: Wister Elementary School – Generator Replacement
SDP Contract No. B-054 (C) of 2016/17

Location: Wister Elementary School
67 E. Brighthurst St.
Philadelphia, Pennsylvania 19144

This Addendum, dated September 5, 2018, shall modify and become part of the Contract Documents for the work of this project. Any items not mentioned herein, or affected by, shall be performed strictly in accordance with the original documents.

RFI #01

Question #1. Please see demo note 4 on drawing E101. It indicates that we are to demolish the meter and the lateral back to the gas main in coordination with PGW. We did not really look at this in the field. Is it above ground or underground? How far is it? Where is the main located? Please provide detail if included in scope. It seems that note 2 contradicts note 4 indicating we are only to demo back and cap at meter. Please clarify.

Response – Maintain existing gas service. Disconnect and remove existing gas supply piping back to gas meter as indicated in Note 1, on drawing E101. Refer to updated drawing E101.

Drawing Changes

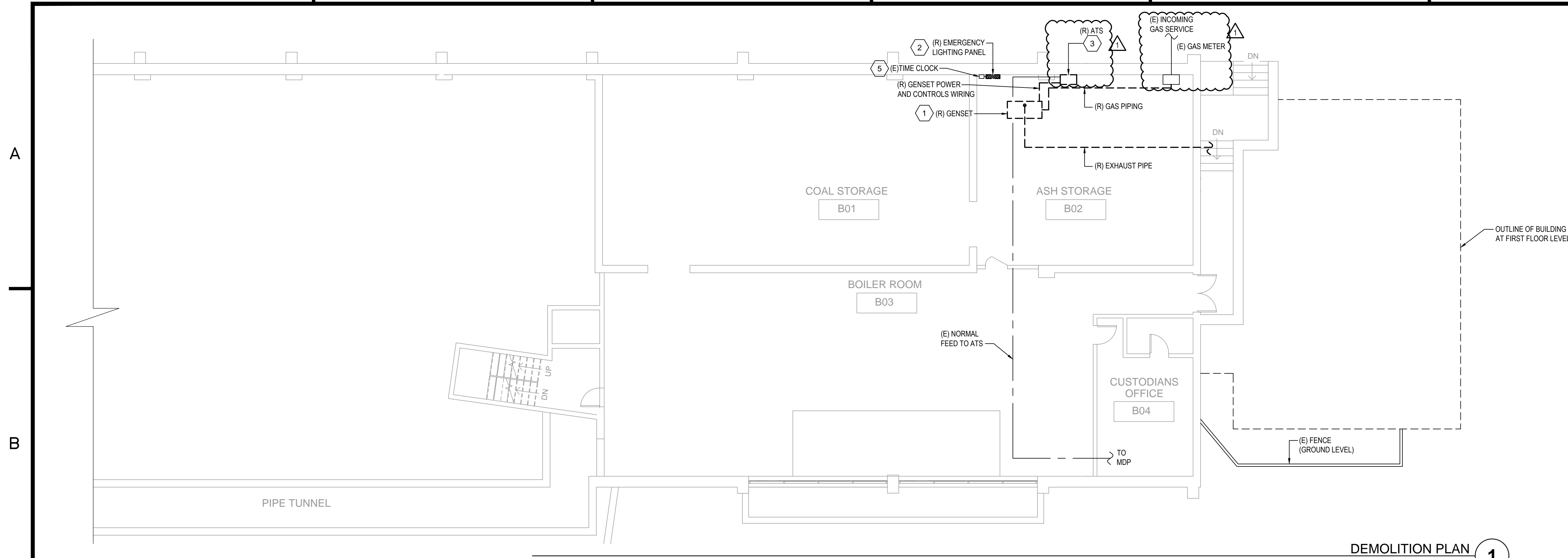
E101

1. Updated drawing to indicate existing ATS to be removed.
2. Updated drawing to indicate installation of new ATS.
3. Updated drawing to indicate reconnection of existing normal feed to new ATS.
4. Updated drawing to indicate maintaining gas meter and service.

E601

1. Revise panel schedule to indicate panel is being fed from a new ATS.

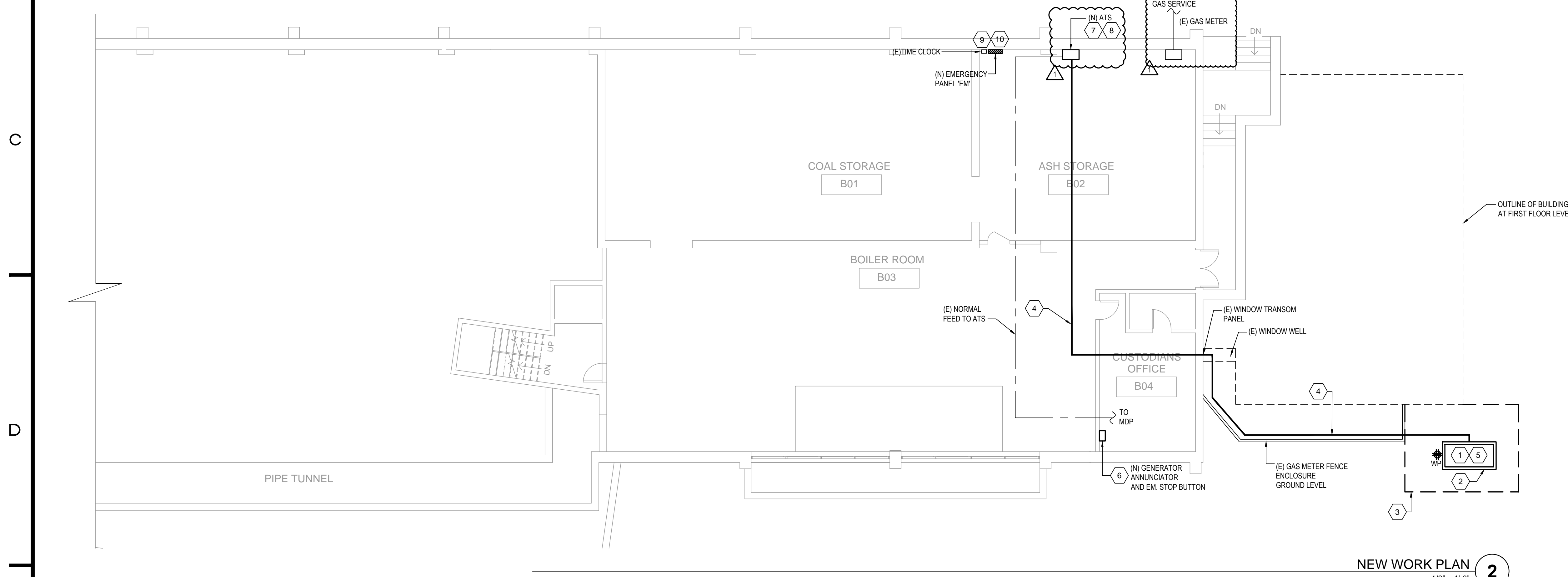
End of Addendum



DEMOLITION PLAN 1
1/8" = 1'-0"

DEMOLITION KEYNOTES

1	DISCONNECT AND REMOVE GENERATOR, ALL ASSOCIATED ACCESSORIES (BATTERY CHARGERS, EXHAUST MANIFOLD, ETC.) AND ALL ASSOCIATED WIRING AND CONDUIT. EXISTING CONCRETE HOUSEKEEPING PAD FOR GENERATOR TO REMAIN. DISCONNECT AND REMOVE ALL EXHAUST AND GAS PIPING AND HANGERS. REMOVE, CAP AND SEAL GAS SUPPLY PIPING BACK TO GAS METER. PATCH AND REPAIR WALL PENETRATION FOR EXHAUST PIPING.
2	DISCONNECT AND REMOVE FUSED EMERGENCY LIGHTING PANEL 'EM'. DISCONNECT AND SAFE OFF ALL (20) BRANCH CIRCUITS. PREPARE FOR RECONNECTION TO NEW PANEL BOARD.
3	REMOVE EXISTING 100A, 2-POLE, 250V AUTOMATIC TRANSFER SWITCH (ATS), GENERAC M8 93A03737. DISCONNECT AND REMOVE EMERGENCY LINE FEEDERS BACK TO GENERATOR AND LOAD FEEDERS BACK TO PANEL 'EM'. DISCONNECT NORMAL POWER FEEDERS FROM ATS AND MAINTAIN FOR RECONNECTION UNDER NEW WORK.
4	NOT USED.
5	EXISTING TIME CLOCK FOR VESTIBULE NIGHT LIGHTS TO REMAIN AND SHALL BE DISCONNECTED FROM PANEL 'EM'. PREPARE FOR RECONNECTION TO NEW PANEL BOARD.



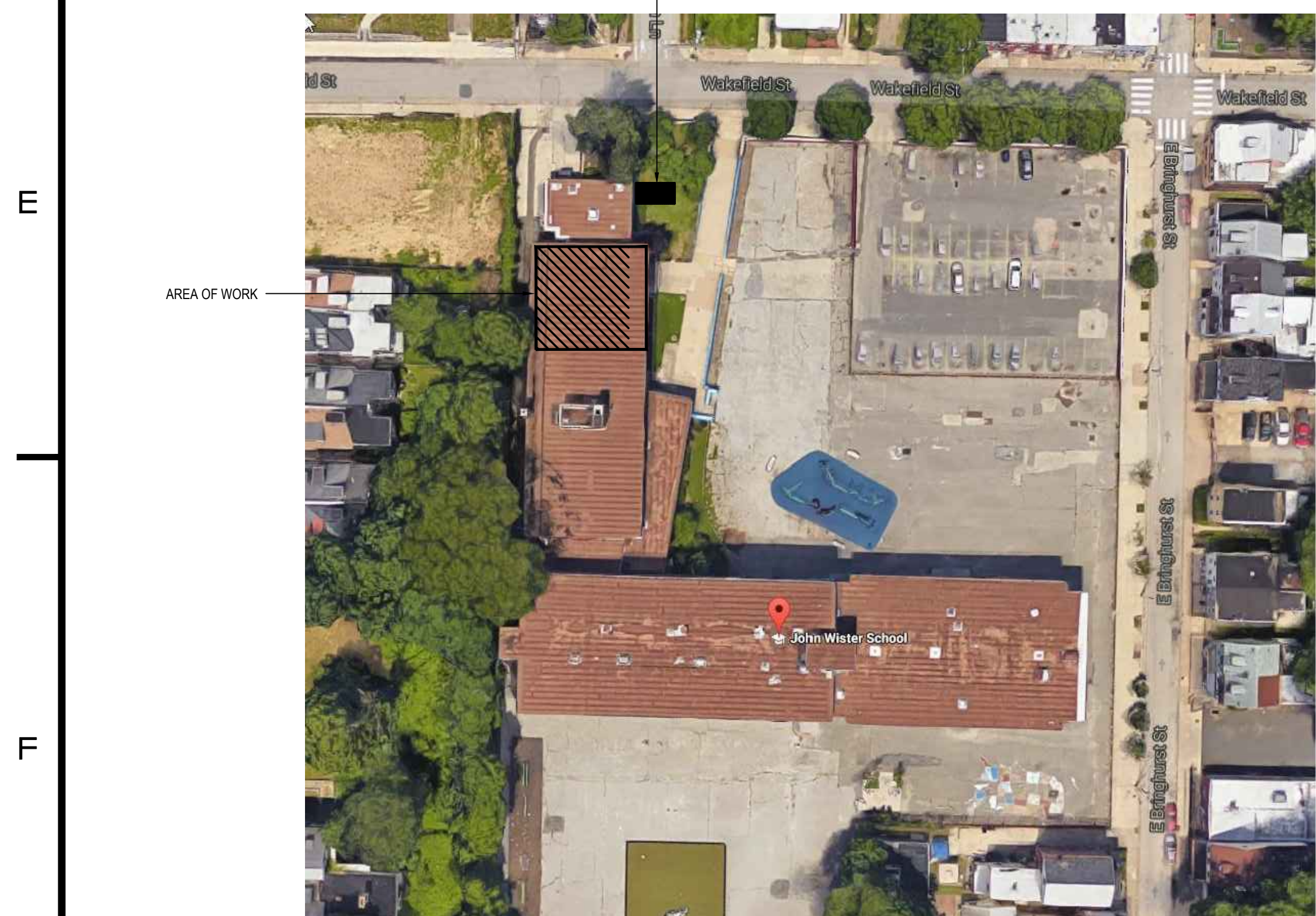
NEW WORK PLAN 2
1/8" = 1'-0"

GENERAL NOTES:

- ALL CONDUIT SHALL BE THREADED GALVANIZED RIGID METAL (STEEL) CONDUIT ONLY.
- CONTRACTORS SHALL COORDINATE INSTALLATION WITH SDP ENVIRONMENTAL TEAM.

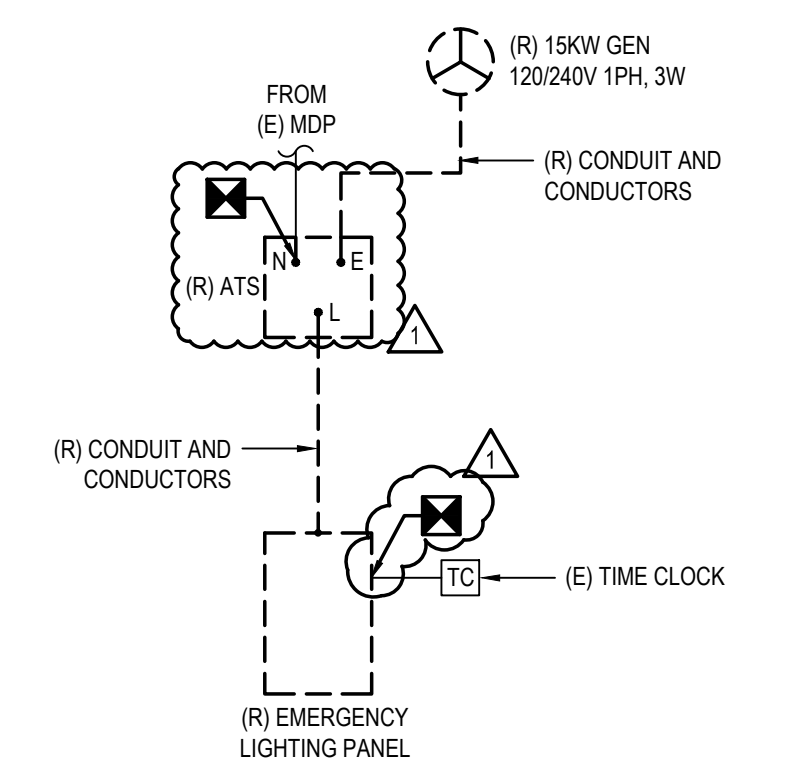
NEW WORK SHEET NOTES

- PROVIDE NEW DIESEL GENERATOR WITH LEVEL 1 SOUND ATTENUATING WEATHERPROOF ENCLOSURE. GENERATOR SHALL BE RATED FOR 15KW, 120/240V, 1PH. PROVIDE GENERATOR WITH 48-HOUR DOUBLE-WALLED SKID-BASED DIESEL FUEL TANK WITH OVERFLOW AND SECONDARY VENTILATION, MOUNTED UNDER GENERATOR.
- PROVIDE NEW 6" CONCRETE HOUSEKEEPING PAD, 3000 PSI CONCRETE SLAB FOR NEW GENERATOR. PAD SHALL EXTEND AT MINIMUM 4" BEYOND FOOTPRINT OF GENERATOR ENCLOSURE ON ALL SIDES. COORDINATE EXACT DIMENSIONS OF PAD WITH SELECTED GENERATOR EQUIPMENT. SEE DWG E501 FOR HOUSEKEEPING PAD DETAIL.
- PROVIDE CHAIN FENCE FOR GENERATOR. SEE DWG E501 FOR FENCING AND COVER DETAILS.
- PROVIDE (1) 2" CONDUIT FOR GENSET INCOMING POWER WIRING, (1) 1" CONDUIT FOR CONTROL WIRING TO ATS, (1) 1" FOR GENERATOR EM, STOP AND REMOTE ANNUNCIATOR PANEL, (1) 1-1/2" FOR GENSET ACCESSORIES BRANCH CIRCUITS. CONDUITS SHALL BE ROUTED ABOVE-GROUND INSIDE THE FENCE ENCLOSURE OF THE GENERATOR AND GAS SERVICE. ENTER INTO THE BUILDING THROUGH THE WINDOW WELL AND PENETRATE THROUGH THE METAL TRANSOM PANEL ABOVE THE WINDOW. CONDUIT SHALL BE CEILING MOUNTED THROUGH THE CUSTODIANS OFFICE, BOILER ROOM, AND ASH STORAGE ROOM. COORDINATE EXACT PATHWAY IN FIELD. CONDUIT PENETRATION THROUGH METAL TRANSOM PANEL SHALL BE SEALED WATER/TIGHT WITH EXTERIOR GRADE WEATHERPROOF SEALANT.
- PROVIDE POWER FOR GENERATOR ACCESSORIES: ANTI-CONDENSATE HEATER, BLOCK HEATER, CONVENIENCE RECEPTACLE, AND BATTERY CHARGER. UTILIZE DEDICATED 120V, 20AMP CIRCUITS FOR EACH ACCESSORY: ANTI-CONDENSATE HEATER - EM7, BLOCK HEATER - EM9, BATTERY CHARGER - EM11, CONV. RECEPTACLE - EM8. UTILIZE EXISTING SPARE BREAKERS WITHIN PANEL. BREAKERS UTILIZED FOR GENERATOR ACCESSORIES SHALL BE LOCKED IN THE NORMAL/EMERGENCY SWITCH POSITION. PROVIDE (2) #12 - (1) #12 GND FOR EACH CIRCUIT ROUTED WITHIN 1'-10" CONDUIT TO GENERATOR. PROVIDE AN UPDATED CIRCUIT DIRECTORY FOR EXISTING PANEL ELP.
- PROVIDE NEW EMERGENCY STOP BUTTON AND GENERATOR ANNUNCIATOR WITH WIRE GUARD CAGE. COMPATIBLE WITH NEW GENERATOR. PROVIDE 1" CONDUIT FROM GENERATOR TO EM, STOP BUTTON AND ANNUNCIATOR FOR INTERCONNECTION OF BUTTON AND ANNUNCIATOR TO GENERATOR CONTROL PANEL. PROVIDE WIRING INTERCONNECTION PER GENSET MANUFACTURER REQUIREMENTS. ANNUNCIATOR PANEL AND EM STOP BUTTON TO BE LOCATED WITHIN BUILDING ENGINEERS OFFICE.
- PROVIDE NEW 100A, 2-POLE, 240V, 3-WIRE ATS, ASCO 300 SERIES OR APPROVED EQUAL. ATS CONTROLLER SHALL BE PROVIDED WITH AUTOMATIC ENGINE EXERCISER FUNCTION. RECONNECT EXISTING NORMAL POWER FEEDER TO NEW ATS.
- GENERATOR IS NOT A SEPARATELY DERIVED SYSTEM. GROUNDED NEUTRAL CONDUCTOR SHALL BE SOLIDLY INTERCONNECTED TO SUPPLY FEEDER CONDUCTORS AT AUTOMATIC TRANSFER SWITCH. NEUTRAL CONDUCTOR SHALL NOT BE SWITCHED.
- NEW CUSTOM PANEL 'EM' - SEE SINGLE LINE DIAGRAM AND DWG E501 FOR MORE DETAILS. RECONNECT ALL EXISTING (2) 20 BRANCH CIRCUITS TO NEW PANEL BOARD. RECONNECT EXISTING TIMECLOCK TO PANEL BOARD. PROVIDE NAME PLATE PLACARDS FOR EACH BRANCH CIRCUIT. PANEL BOARD SHALL BE PROVIDED WITH (2) MAIN BREAKERS: (1) MCB FOR EMERGENCY ONLY FEEDER, (1) MCB FOR NORMAL/EMERGENCY FEEDER TO PANEL BOARD. PROVIDE PLACARD LABELS FOR EACH MAIN BREAKER. PROVIDE A TISS FOR NEW PANEL BOARD: 30A, DISCONNECT WITH (2) 30A FUSES AND TRANSIENT SURGE SUPPRESSION DEVICE. RUN #10 AWG FROM DISCONNECT TO FEED THRU LUGS ON NORMAL POWER BUS BAR.
- PROVIDE A PLACARD LABEL AT PANEL BOARD IDENTIFYING THAT THE PANEL BOARD IS SUPPLIED FROM (2) SOURCES OF POWER. PLACARD SHALL STATE: "PANEL BOARD IS SUPPLIED FROM TWO SOURCES OF POWER. TO DE-ENERGIZE PANEL BOARD, 1. SHUT OFF EMERGENCY ONLY MAIN BREAKER AND NORMAL/EMERGENCY MAIN BREAKER, AND LOCK OUT BREAKER. AUTOMATIC TRANSFER SWITCH SHALL BE LOCKED INTO OPEN SWITCH POSITION."

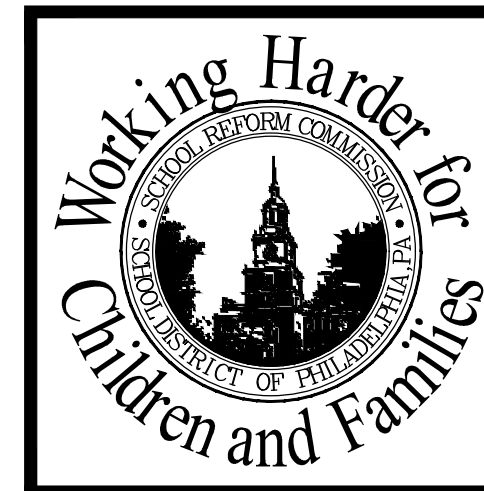
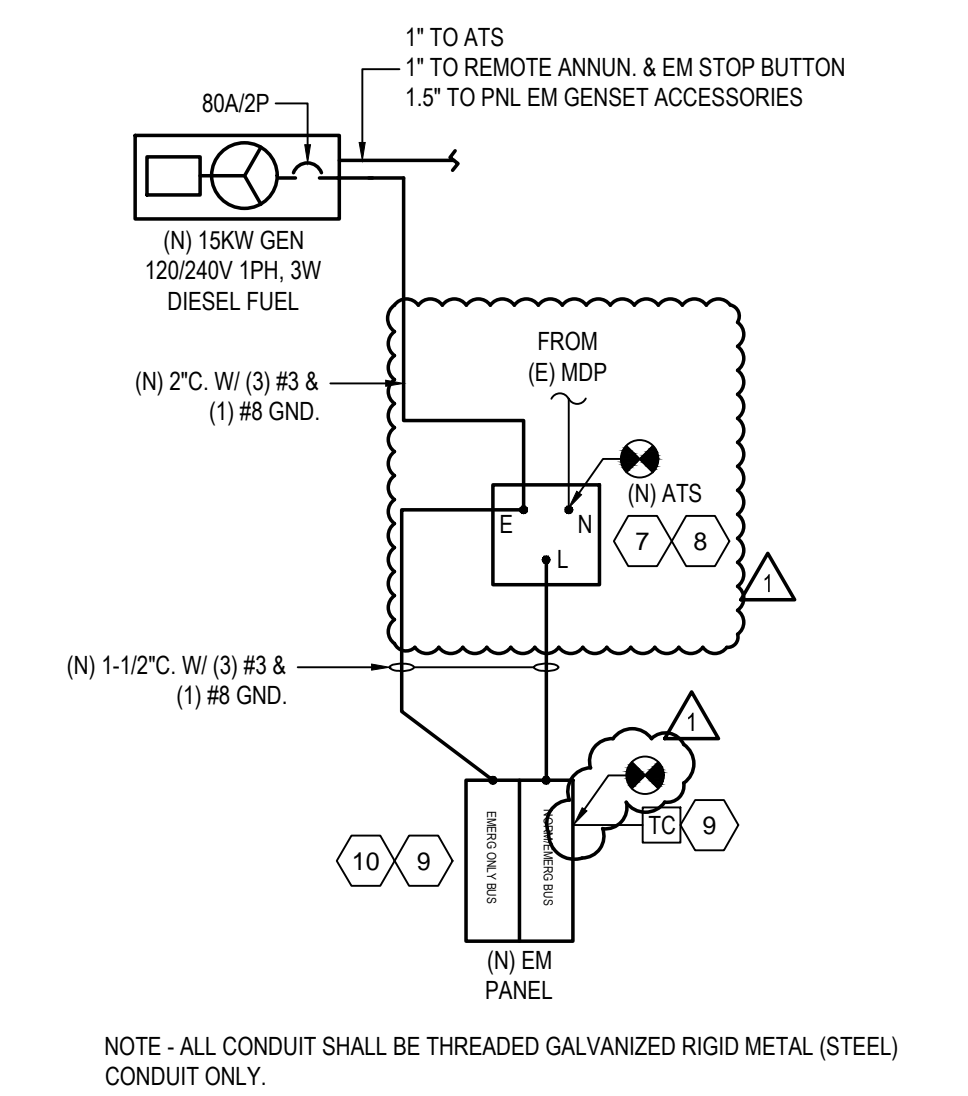


PROJECT SITE PLAN 3
NTS

PARTIAL DEMOLITION SINGLE LINE DIAGRAM 4
NOT TO SCALE



PARTIAL NEW WORK SINGLE LINE DIAGRAM 5
NOT TO SCALE



SEAL

NORR
NORR Design, Inc.
1617 JFK Blvd, Suite 1600
Philadelphia, PA 19103
T 215.526.4849
F 215.526.4852
Architecture - Interior Design - Engineering

SCHOOL & LOCATION
WISTER ELEMENTARY SCHOOL
67 E BRINGHURST ST., PHILADELPHIA, PA 19144

PROJECT TITLE
EMERGENCY GENERATOR REPLACEMENT
PARTIAL BASEMENT PLAN -
DEMOLITION AND NEW WORK PLAN

APPROVED BY

SCHOOL DISTRICT OF PHILADELPHIA
THE SCHOOL REFORM COMMISSION

DEPARTMENT OF DESIGN AND CONSTRUCTION SERVICES
PHILADELPHIA, PA 19107-4015
215-400-4230 FAX 215-400-4751
www.philsd.org

CONTRACTOR TO VERIFY ALL CONDITIONS AND DIMENSIONS AT SITE

8	
7	
6	
5	
4	
3	
2	
1	08.31.16 JARDON/MFP
	08/06/16 ISSUED FOR BID
	NO. / DATE REVISION

SPEC. NO.	DATE
B-054C 2016/17	08/06/2018
SCALE	LOCATION NO.
AS NOTED	6438
DRAWN BY	TYPE NO.
BAS	
CHECKED BY	FILE NO.
NVP	

DRAWING NO.
E101

A

B

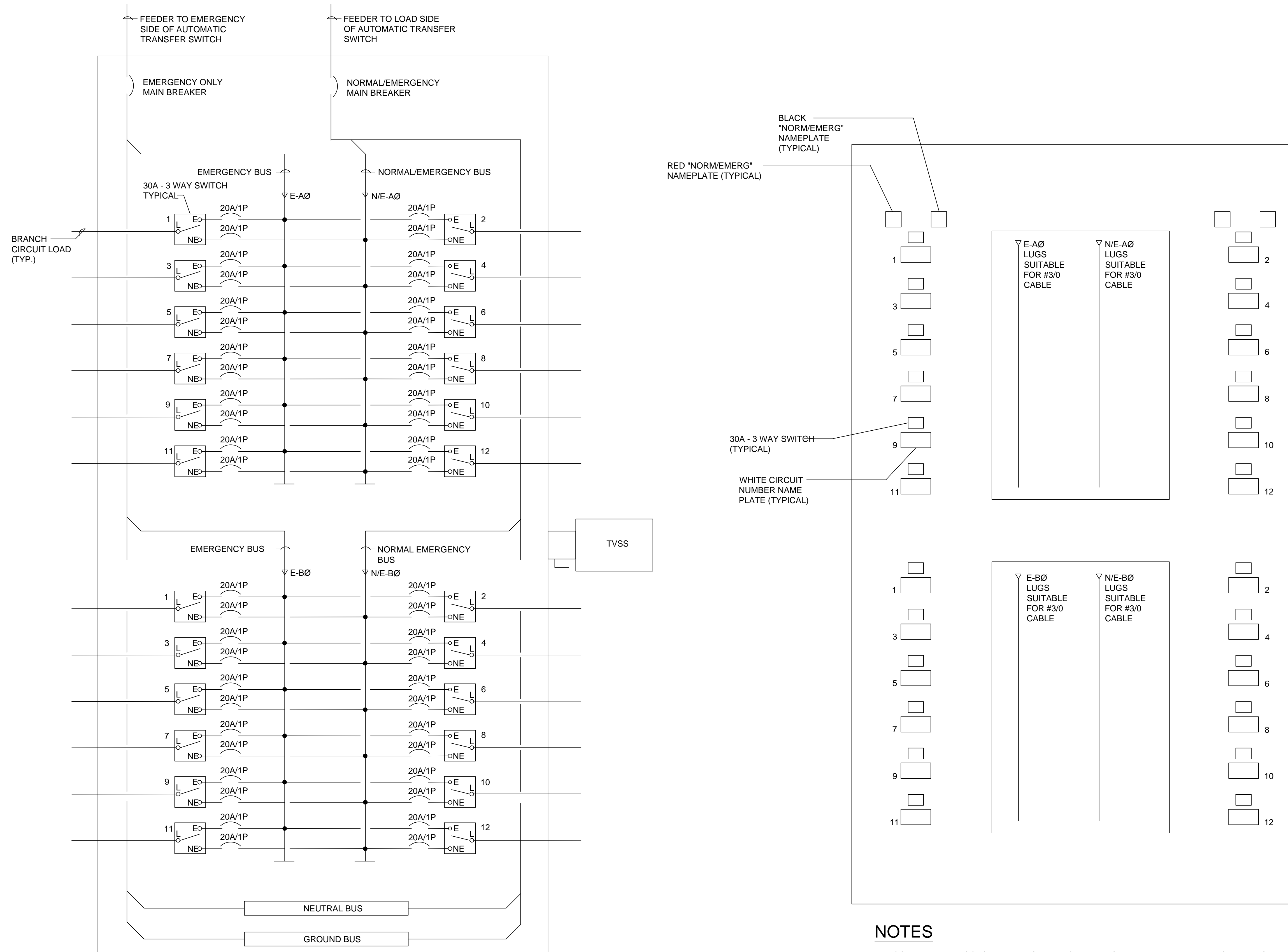
C

D

E

F

PANEL: EM (NEW CUSTOM PANEL) LOCATION: BASEMENT FED FROM: (N) ATS		VOLTAGE: 120/240V 1 PHASE 3 WIRE										BUS: 100A AMPS 10000 AIC						
		MOUNTING: SURFACE ■ FLUSH □										□ LUGS ONLY						
		■ DENOTES ARC FAULT INTERRUPTER C.B.										■ MCB 80A AMPS (QTY OF 2)						
		■ DENOTES GFCI C.B. REQD																
CIR #	EQUIPMENT SERVED	FEEDER SIZE			Breaker			LOAD KVA			Breaker			FEEDER SIZE			EQUIPMENT SERVED	CIR #
		Wire	GND	L.G.	Amps	Poles	L1	L2	Ø	L1	L2	Amps	Poles	Wire	GND	L.G.		
1	(E) 3RD FL CORR LITS	12	12	-	20	1	0.8	A	0.8	20	1	12	12	-		(E) 1ST FL CORR LITS	2	
3	(E) STAR #2 LITS	12	12	-	20	1	0.8	B	0.8	20	1	12	12	-		(E) MAIN ENF LITS	4	
5	(E) STAR #2 EXT LITS	12	12	-	20	1	0.5	A	0.5	20	1	12	12	-		(E) GYM & AUG. EXT LITS	6	
7	(E) GYM LIGHTS	12	12	-	20	1	1.0	B	0.8	20	1	12	12	-		(E) 1ST FL EXT LITS	8	
9	(E) BOILER ROOM EXT LITS	12	12	-	20	1	0.8	A	0.2	20	1	12	12	-		(E) EM GENERATOR REC	10	
11	(E) STAR #1 LITS	12	12	-	20	1	0.8	B	0.5	20	1	12	12	-		(E) 2ND FL CORR LITS	12	
1	(E) STAR #1 EXT LITS	12	12	-	20	1	0.5	A	0.5	20	1	12	12	-		(E) LOBBY & VEST LITS	2	
3	(E) ALL CORR LITS	12	12	-	20	1	1.0	B	1.0	20	1	12	12	-		(E) BOILER ROOM LITS	4	
5	(E) BOILER ROOM EXT LITS	12	12	-	20	1	0.5	A	0.5	20	1	12	12	-		(E) BOILER ROOM STAIRS	6	
7	(E) ANTI-CONDENSATE HTR	12	12	-	20	1	1.5	B	0.4	20	1	12	12	-		(E) COMM. REC	8	
9	BLOCK HEATER	12	12	-	20	1	1.5	A		20	1	-	-	-		SPARE	10	
11	BATTERY CHARGER	12	12	-	20	1	1.5	B		20	1	-	-	-		SPARE	12	
Remarks:		LINE TOTAL		6.1		4.8		2.9		3.1		PANEL SHALL BE EQUIPPED WITH BUSES FOR ALL C.B.S AND SPACES SHOWN						
		TOTAL CONN. KVA		16.9								□ 200% NEUTRAL BUS □ FEED THRU LUGS						
		TOTAL CONN. AMPS		70.4								□ ISOLATED GROUND BUS						
												■ GROUND BUS						



NOTES

SEE PANEL SCHEDULE FUSE RATINGS AND QUANTITY OF CIRCUITS PER SECTION

NOTES

- CORBIN #15767 LOCKS AND PULLS WITH #CAT 60 MASTER KEY, KEYED ALIKE TO THE MASTER KEY SYSTEM OF THE SCHOOL DISTRICT OF PHILADELPHIA.
- PROVIDE ENGRAVED PLASTIC LAMINATE PANEL BOARD NAME PLATE.
- PROVIDE TYPE WRITTEN CIRCUIT DIRECTORY.



SEAL

NORR
 NORR Design, Inc.
 1617 JFK Blvd, Suite 1600
 Philadelphia, PA 19103
 T 215.526.4849
 F 215.526.4852
 Architecture - Interior Design - Engineering

SCHOOL & LOCATION
WISTER ELEMENTARY SCHOOL
 67 E BRINGHURST ST., PHILADELPHIA, PA 19144

PROJECT TITLE
EMERGENCY GENERATOR REPLACEMENT

DRAWING TITLE
SCHEDULES AND DETAILS

APPROVED BY

SCHOOL DISTRICT OF PHILADELPHIA
 THE SCHOOL REFORM COMMISSION

DEPARTMENT OF DESIGN AND CONSTRUCTION SERVICES
 PHILADELPHIA, PA 19107-4015
 215-400-4230 FAX 215-400-4731
 www.phila.edu

CONTRACTOR TO VERIFY ALL CONDITIONS AND DIMENSIONS AT SITE

8		
7		
6		
5		
4		
3		
2	08.31.16	ADD/DRAW/FP
1	08.06.16	ISSUED FOR BID
		NO. / DATE / REVISION

SPEC NO.	B-054C	DATE	08/06/2018
SCALE	AS NOTED	LOCATION NO.	6438
DRAWN BY	BAS	TYPE NO.	
CHECKED BY	NVP	FILE NO.	

DRAWING NO.
E601