

**THE SCHOOL DISTRICT OF PHILADLPHIA  
SCHOOL REFORM COMMISSION  
Office of Capital Programs  
440 North Broad Street, 3<sup>rd</sup> Floor – Suite 371  
Philadelphia, PA 19130**

TELEPHONE: (215) 400-4730

**Addendum No. 01**

**Subject:** Dunbar Elementary School – Emergency Generator Replacement  
SDP Contract No. B-061C of 2018/19

**Location:** Paul Dunbar Elementary School  
1750 N. 12<sup>th</sup> Street,  
Philadelphia, Pennsylvania 19122

---

**This Addendum, dated October 9, 2018, shall modify and become part of the Contract Documents for the work of this project. Any items not mentioned herein, or affected by, shall be performed strictly in accordance with the original documents.**

---

**Drawing Revisions:**

**Drawings**

**E101:**

1. Drawing updated to indicate location of new generator and routing of conduit.
2. Drawing viewport 1 updated to clarify location of existing Normal Power disconnect switch.
3. New Work Key Note 4 updated to indicate routing of conduit.
4. New Work Key Note 11 added to indicate requirement of bollards around fence.
5. New Work Key Note 12 added to indicate coordination of existing storm water grate, bollards and fencing.
6. New Work Key Note 7 updated to indicate new normal feeder from disconnect switch to ATS.

**E501:**

1. Updated Generator Fence detail (Detail#1).
2. Added Typical Bollard Detail (Detail#7)
3. Updated Electrical Conduit Ductbank Detail (Detail#10)

**Bid RFIs:**

1. Question #1: Demo Drawing Note 7 states to demolish normal feed conduit and wire. Single line shows new conduit & wire for normal feed. Drawing E101.0 Note 7 states to re-use existing normal feeder.
  - a. Do we install new conduit and wire for normal feed at ATS.
  - b. Can you furnish a drawing or a distance for the conduit run if we are installing

Response –

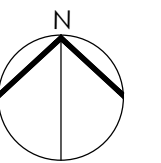
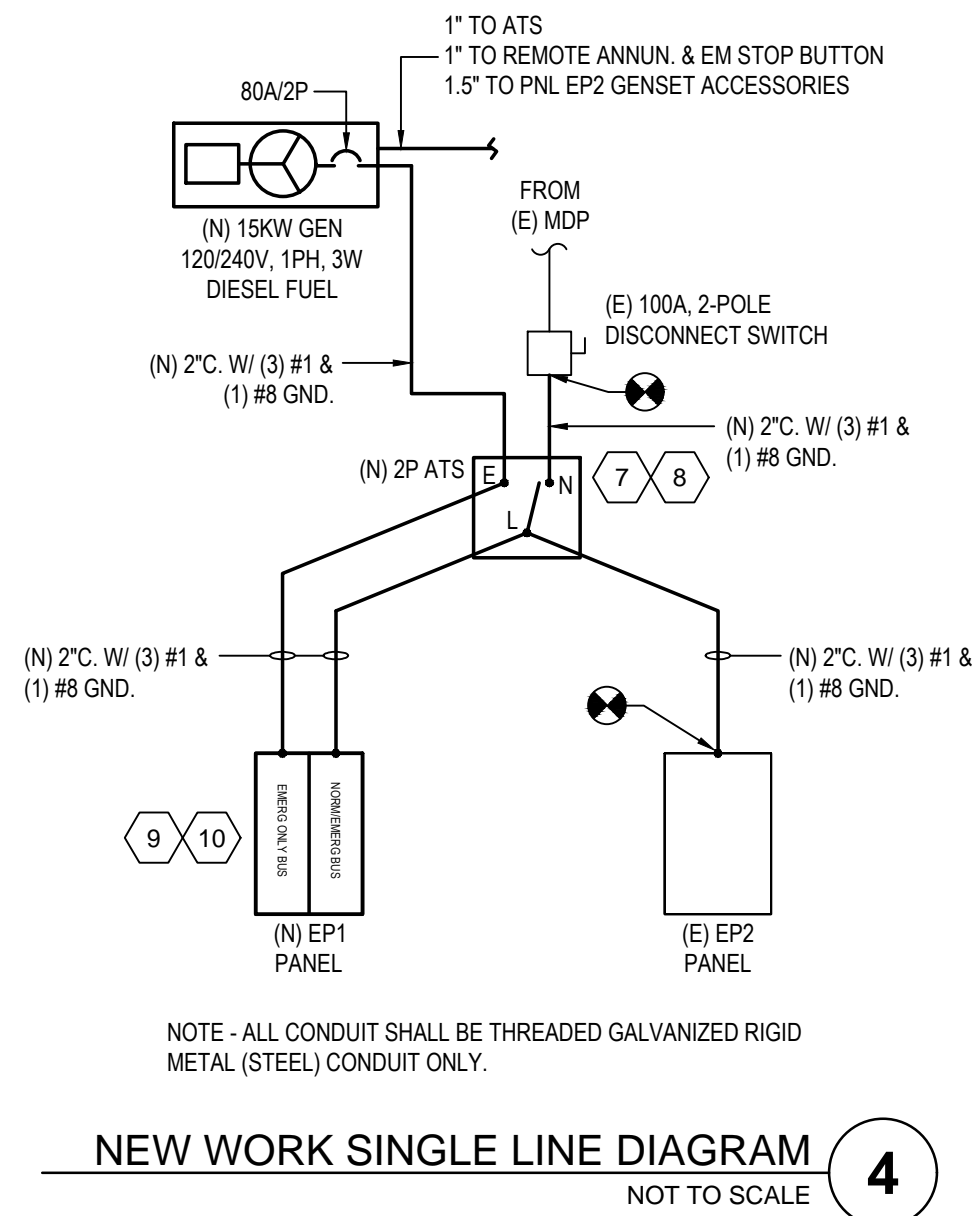
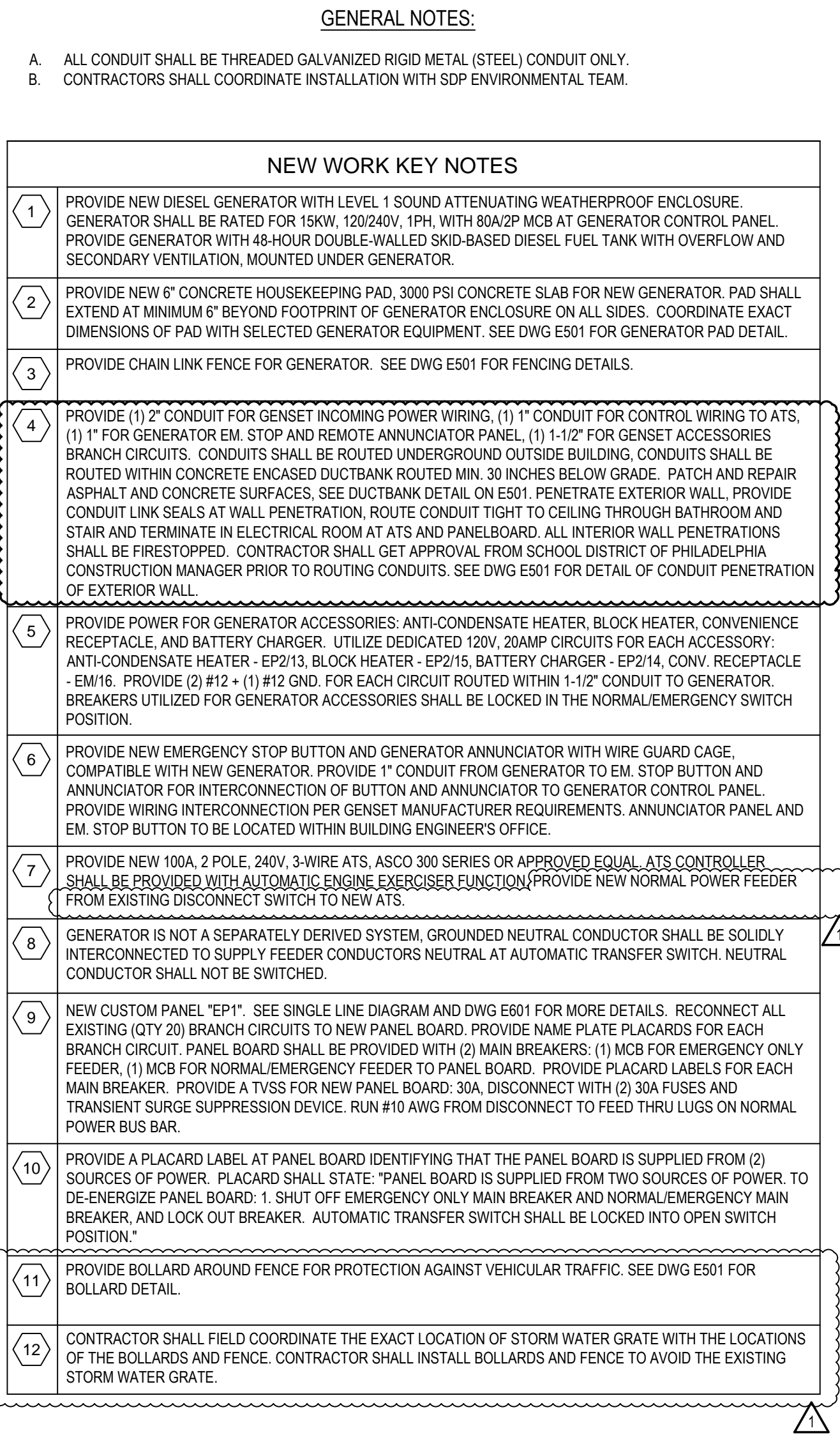
- a. Yes. Install new conduit and wire for normal feed from disconnect switch to ATS. See revised Note 7 on drawing E101.
- b. The approximate distance of conduit run is 225 feet.

**End of Addendum**



DRAWING NO.  
E - 101.0

SHEET 3 OF 5





10		
9		
8		
7		
6		
5		
4		
3		
2		
1	10.09.18	ADDENDUM #1
NO.	DATE	REVISION

SCHOOL & LOCATION  
**PAUL DUNBAR  
ELEMENTARY SCHOOL**  
1750 N. 12TH STREET  
PHILADELPHIA, PA 19122

PROJECT TITLE  
**GENERATOR REPLACEMENT**

DRAWING TITLE

**BASEMENT PLAN**

DRAWING SCALE  
AS NOTED

LOCATION NO.  
5250

DRAWN BY

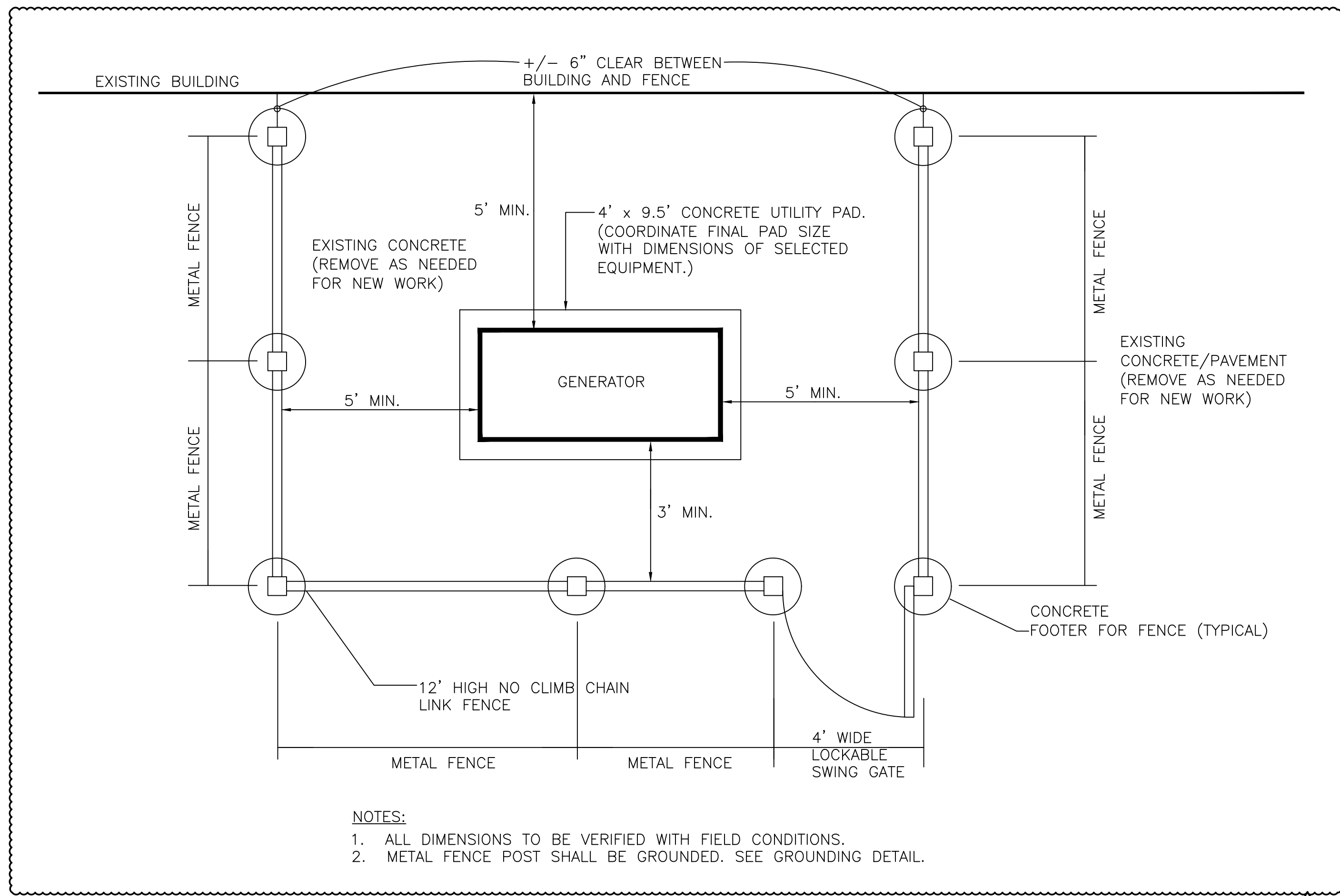
CHECKED BY

B-061C OF  
OF  
2018 / 19

DRAWING NO.

**E - 501.0**

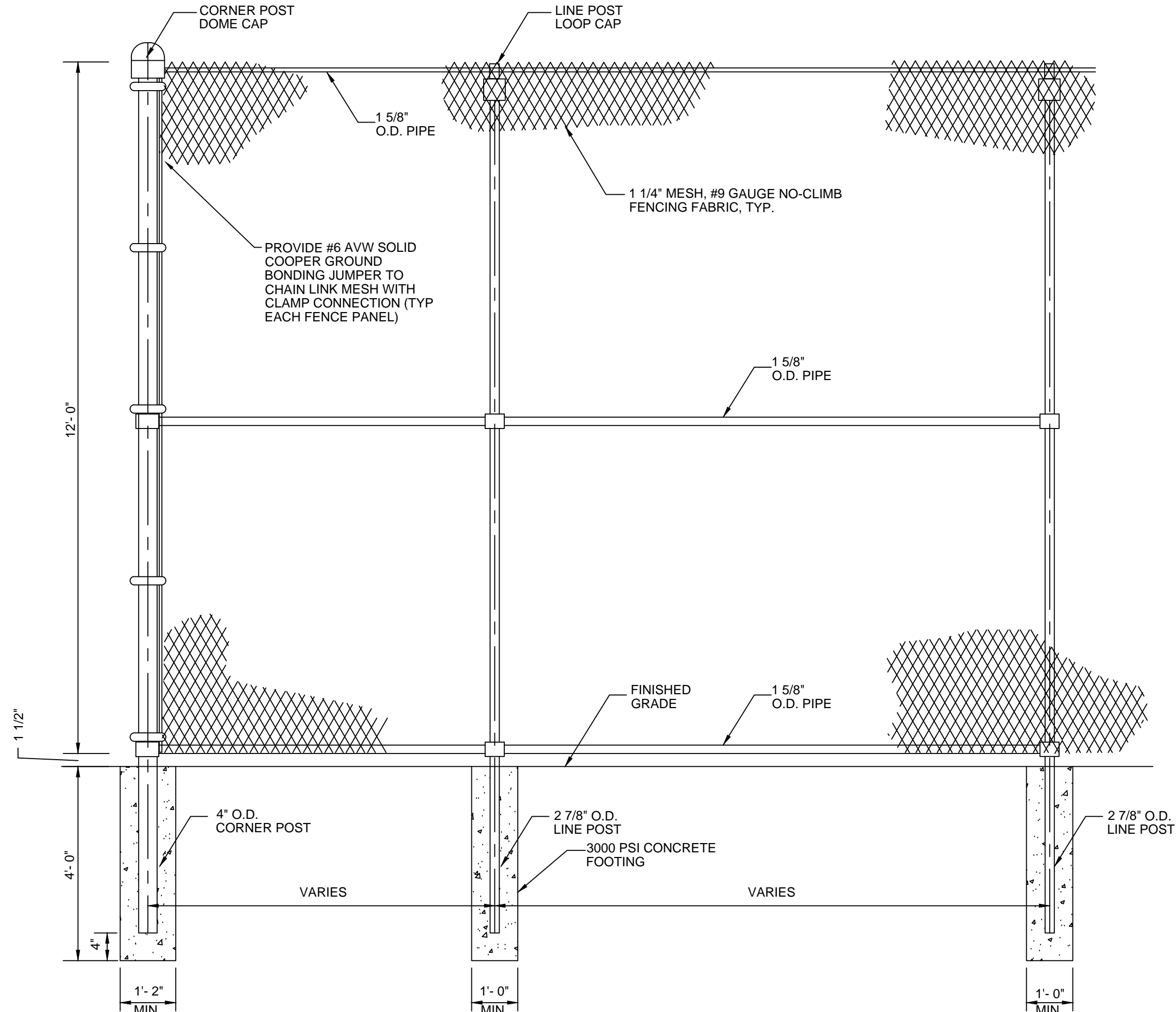
SHEET 4 OF 5



GENERATOR FENCE PLAN

NOT TO SCALE

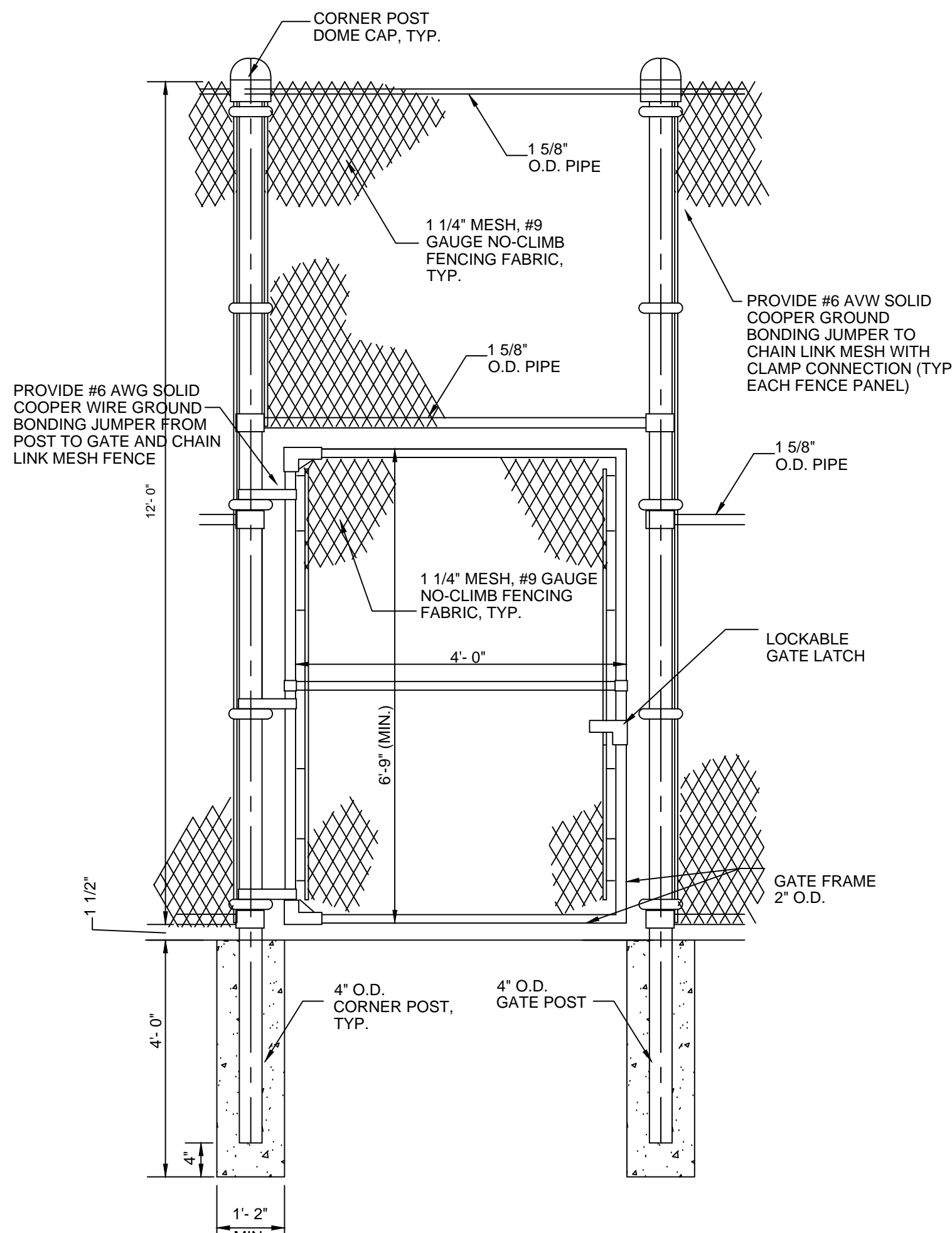
1



CHAIN LINK FENCE DETAIL

NOT TO SCALE

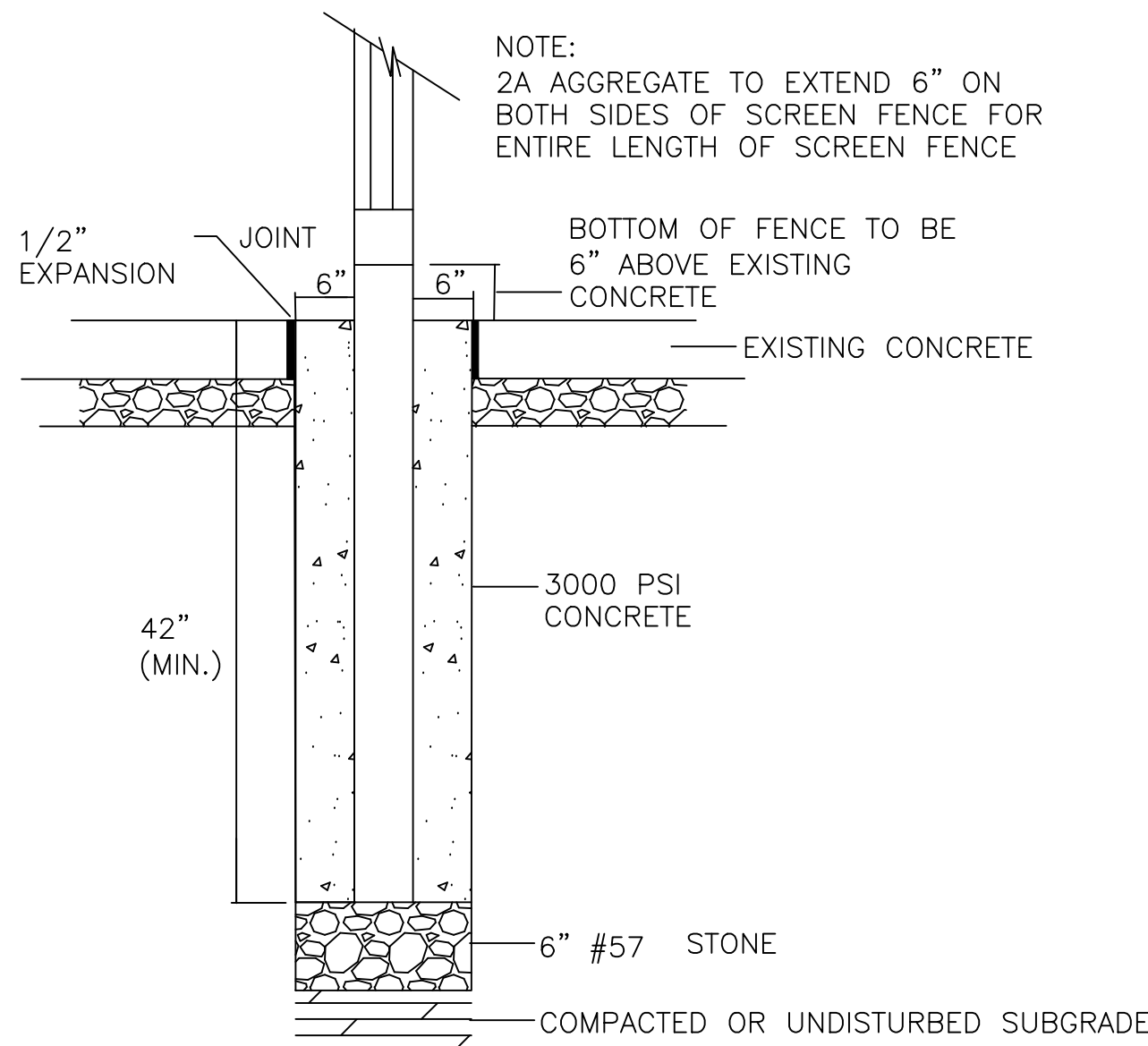
2



CHAIN LINK FENCE GATE DETAIL

NOT TO SCALE

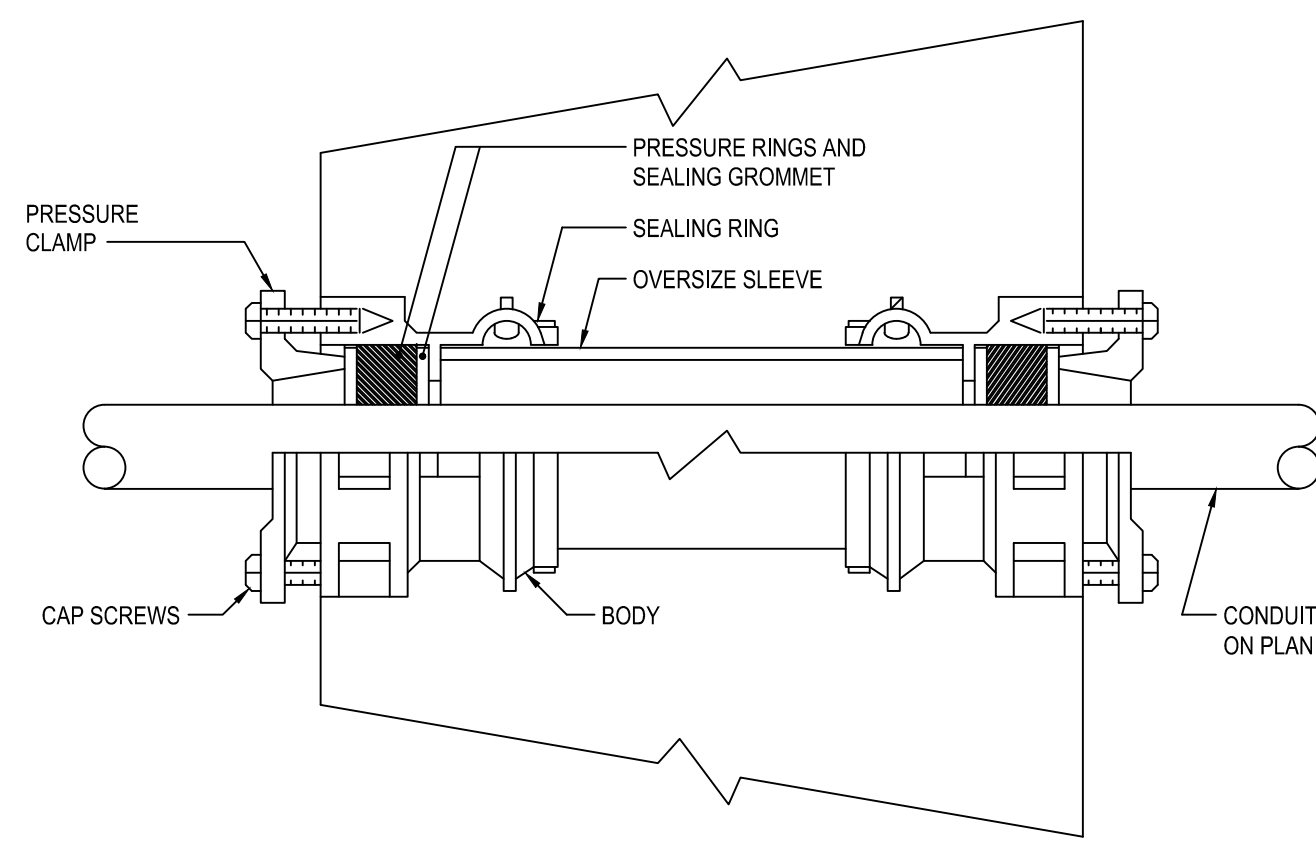
3



SCREEN FENCE POST FOOTER DETAIL

NOT TO SCALE

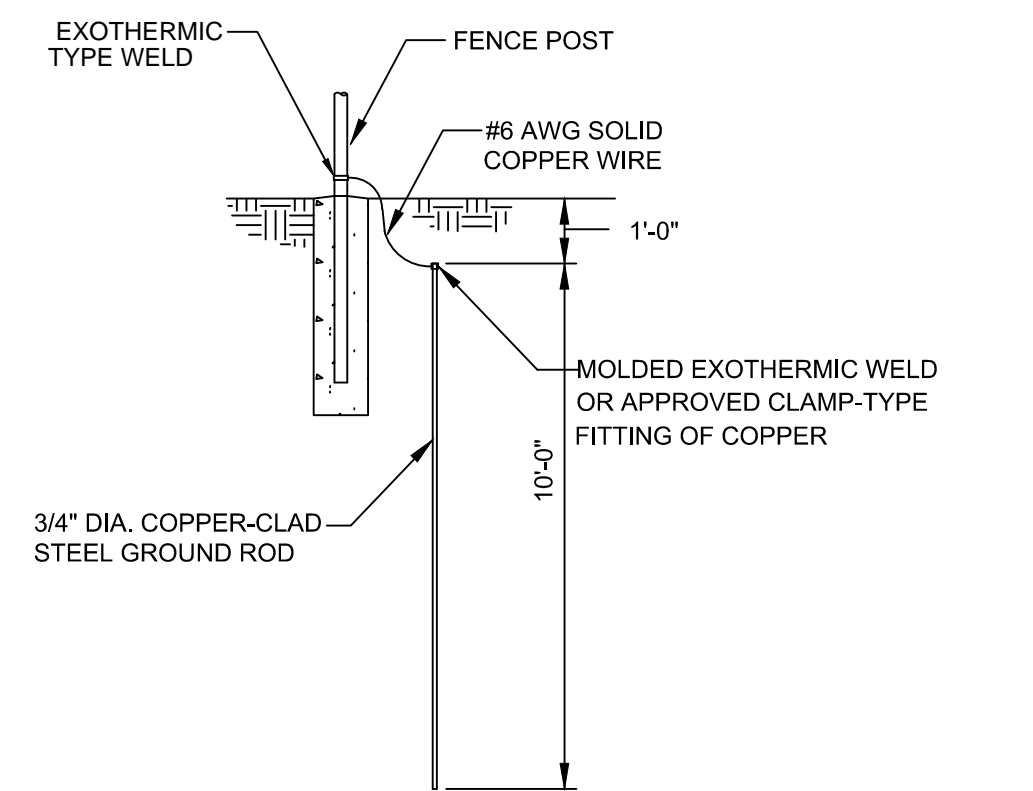
4



EXTERIOR WALL CONDUIT PENETRATION DETAIL

NOT TO SCALE

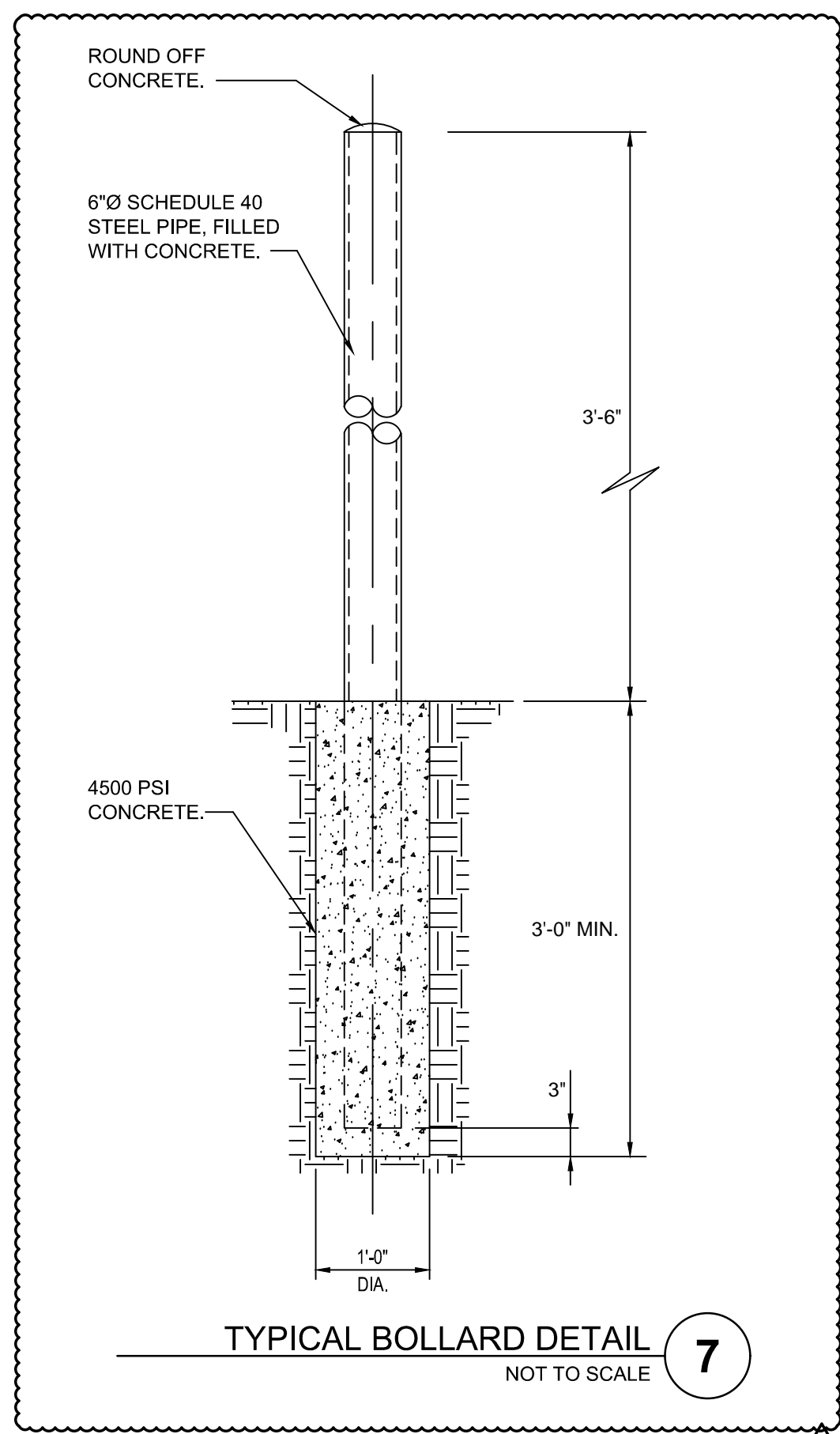
5



FENCE GROUNDING DETAIL

NOT TO SCALE

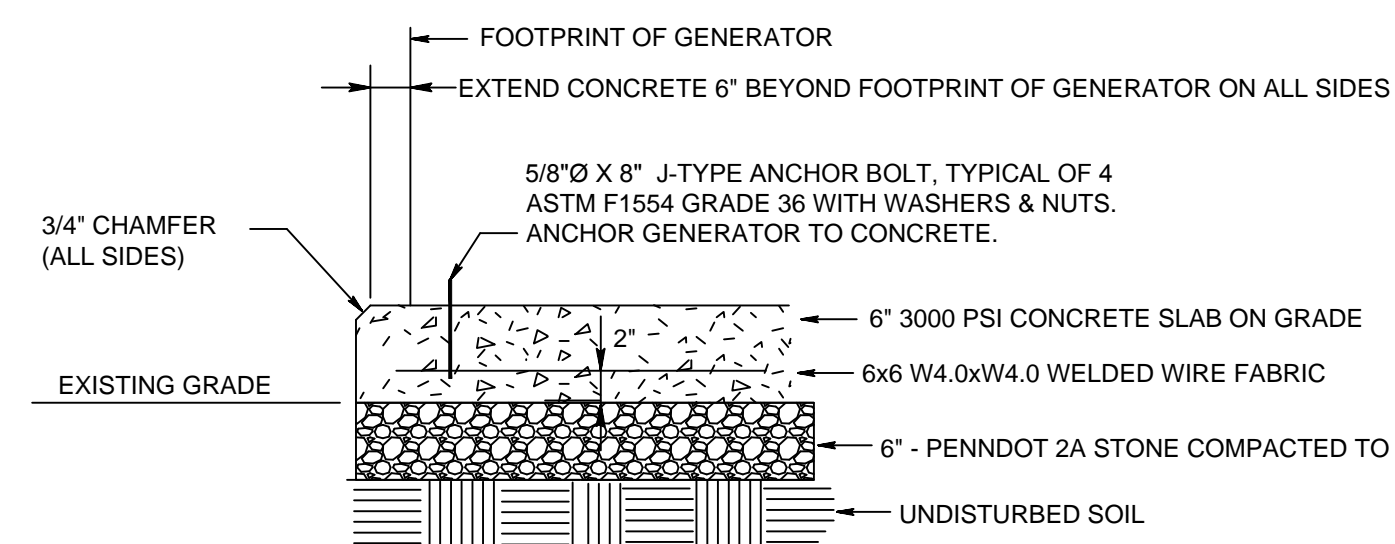
6



TYPICAL BOLLARD DETAIL

NOT TO SCALE

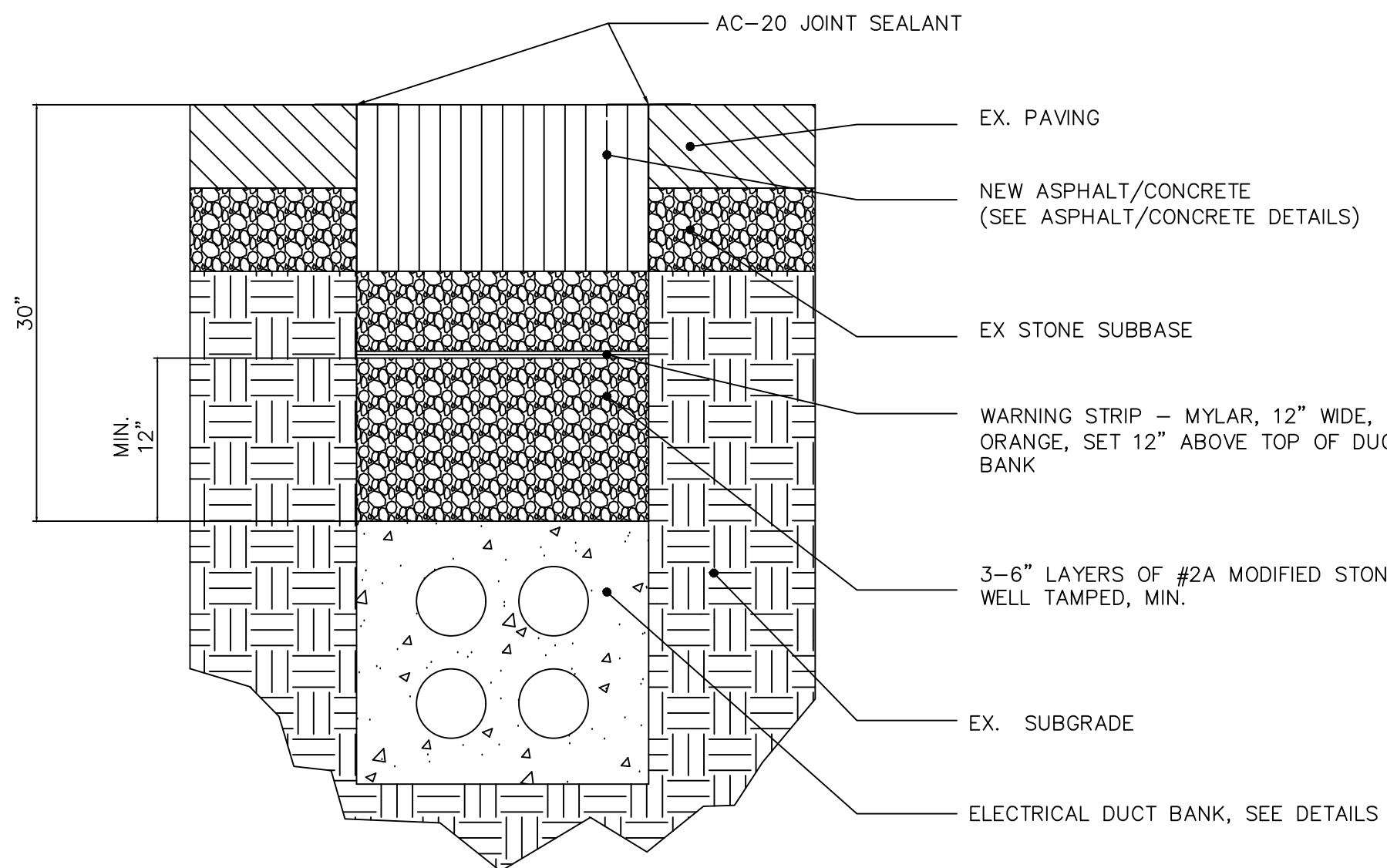
7



GENERATOR HOUSEKEEPING PAD DETAIL

NOT TO SCALE

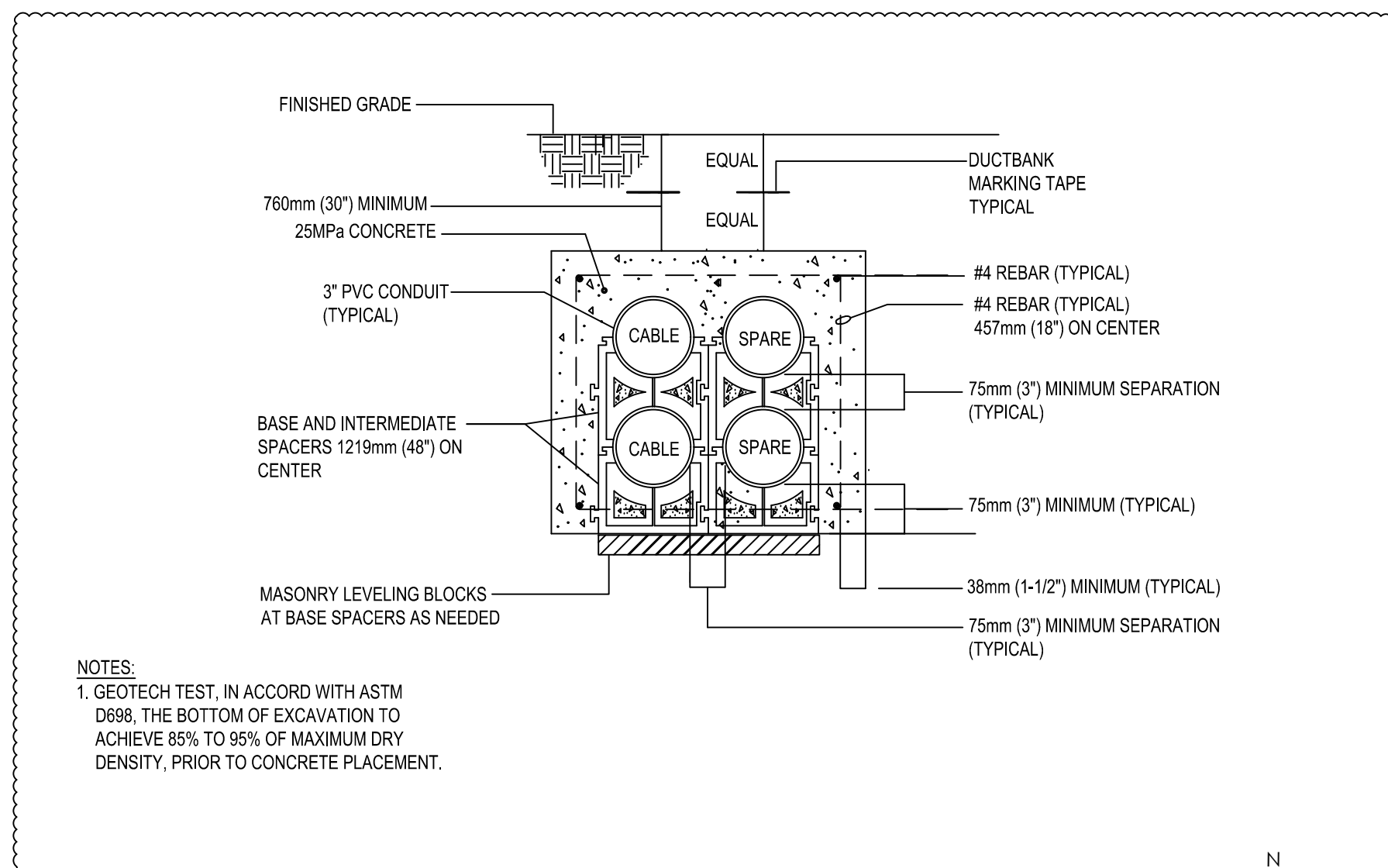
8



ELECTRICAL DUCT BANK INSTALLATION UNDER CONCRETE OR ASPHALT DETAIL

NOT TO SCALE

9



ELECTRICAL CONDUIT DUCTBANK DETAIL

NOT TO SCALE

10