



THE SCHOOL DISTRICT OF  
PHILADELPHIA

## Northeast School Expansion

# Ryan Avenue New School and Feedback Session

February 2019

# Meeting Agenda

Welcome and Meeting Overview (5 minutes)

Project Update (15 minutes)

Introduction of Project Team (5 minutes)

Presentation of Site Options (30 minutes)

Questions and Answers (30 minutes)

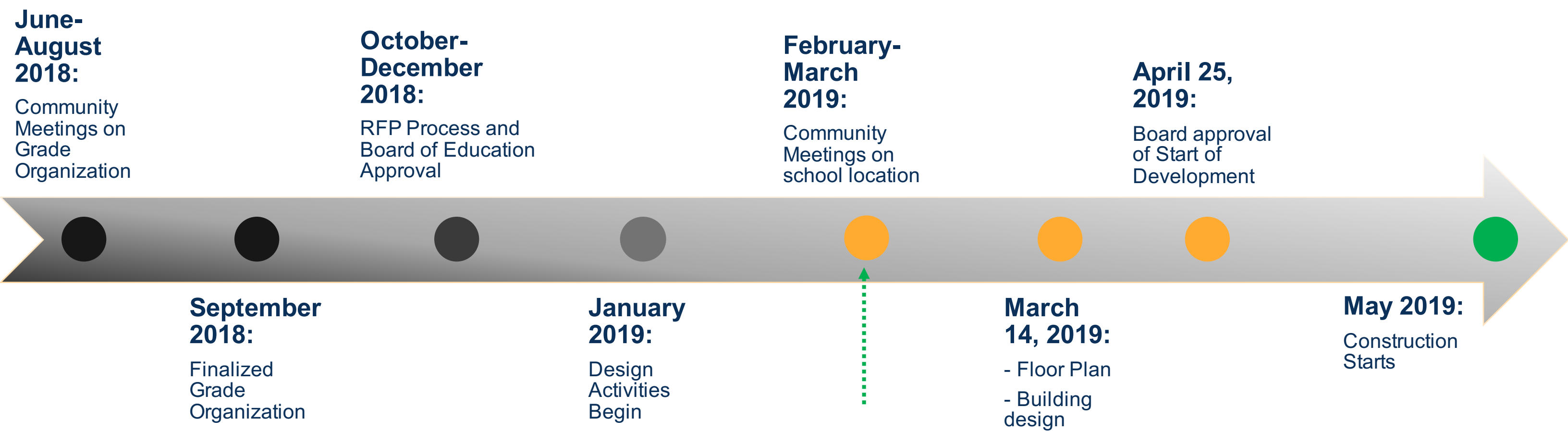
# Meeting Norms

- Treat each other with dignity and respect.
- Help keep the conversation and agenda on track by staying on point and on time (max. 2 minutes).
- Balance your participation – speak and actively listen with an open mind.
- Allow others to participate – all points of view are important to hear.
- Respect other points of view, even when they differ from your own.
- Contribute to meeting goals – topics outside the agenda will be documented and tabled for a later time.
- Assume positive intent.

# What We Are Trying to Accomplish

- Schools in the Lincoln catchment (JH Brown, Forrest, Holme, Mayfair and Pollock) are above capacity.
  - Enrollment continues to increase.
  - The District has estimated a projected seat deficit of 2300 in school year 2022-23 if no action is taken.
  
- Success of the project is achieved through:
  - a balanced enrollment,
  - overcrowding of the Lincoln catchment schools eliminated,
  - and the development of a school, and improvements at the existing schools, that provide 21<sup>st</sup> century learning environments.

# Background Information



- Held community meetings from April to September of 2018 to seek feedback from the community on the New School grade organization which was overwhelmingly in favor of a K-8 over a middle school organization.
- Decided the Grade Organization for the New School will be K-8.
- Issued a Request for Proposal for a development team to design and construct the New School.
- Issued a Request for Proposal to conduct an enrollment study and define a new catchment area for the New School.

# Project Updates

- The Board of Education approved the selection of Gilbane/Stantec as the Developer at the December Public Action meeting. Gilbane/Stantec is:
  - Ranked 1<sup>st</sup> nationally as K-12 Builder and Designer.
  - Has extensive track record of leading K-8 development/design/construction in both the Philadelphia Metropolitan area and the greater region.
  - Completed 136 schools as a team.
- Following a review of the site, the School District and Gilbane have identified two potential locations for the new school. A final decision on the location will be informed by:
  - Walking Distance
  - Safety and Security
  - Traffic
  - Environmental Considerations
  - Stakeholder Feedback
  - Construction Cost
- The proposed location will be presented to the Board of Education and the Superintendent for approval.

# Site Options Overview

- The District and Gilbane team conducted multiple site visits to observe existing conditions:
  - Walking patterns
  - Traffic
  - Site use
  - Site assessment
- Two viable options resulted from the observations: Location A and Location B





Meehan MS

A

Abraham Lincoln HS

B

Ryan Avenue

Rowland Avenue

Rowland Ave

Beigh Av

Aldine St

Google Earth

© 2018 Google

400 ft

## Building Locations under Consideration

Two potential locations are being considered for the New K-8 School.

The dashed lines indicate approximate locations for the new K-8 School.

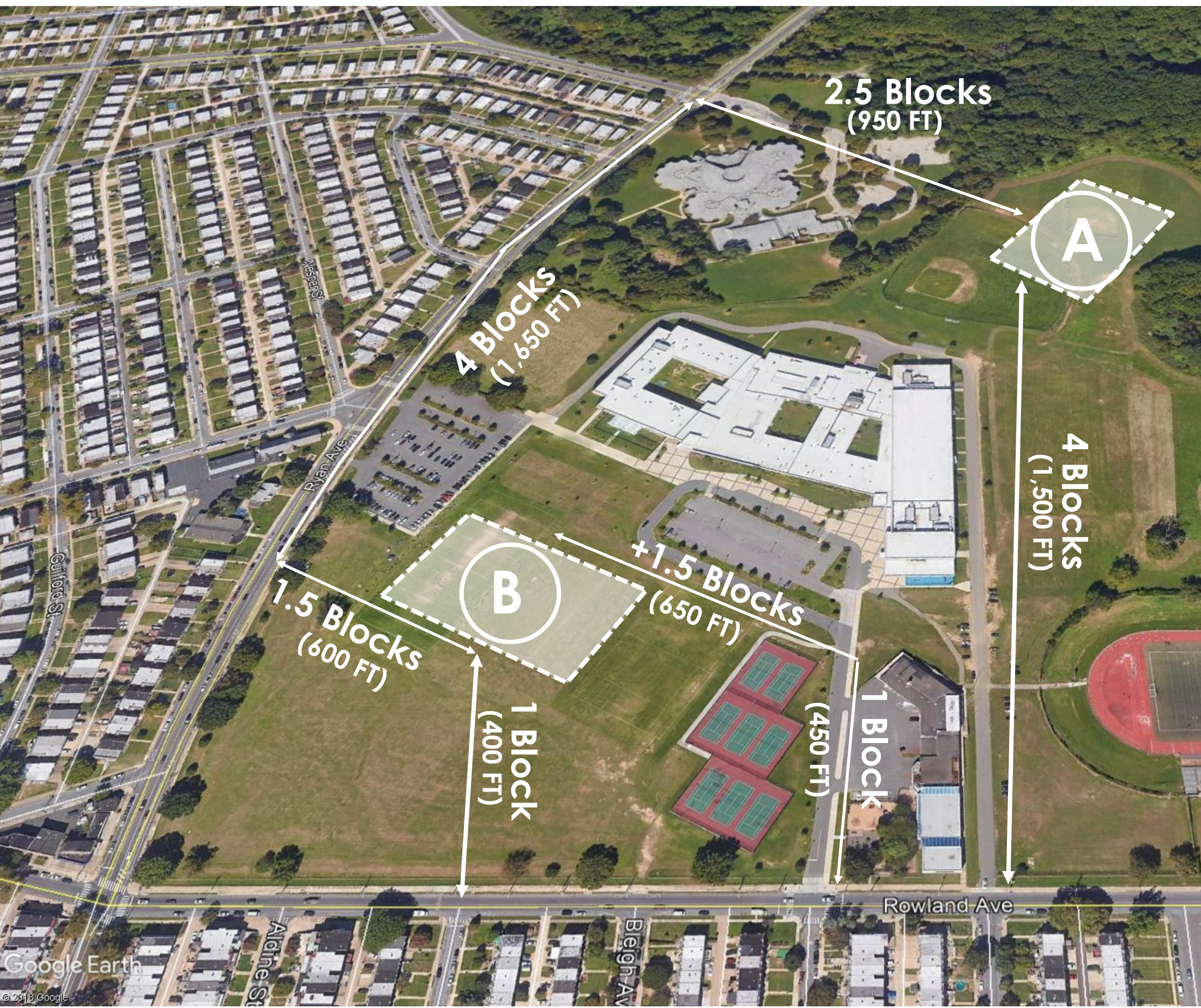
\* Squares A and B are not to scale



# Interactive feedback

- During the overview, we will conduct live polling to receive feedback on the two proposed locations.
- To access the survey, you may login to the WiFi
  - WiFi: PhilaSD
  - User ID: guestsdp
  - Password: Lincoln
  - When prompted, WPA2 Password: Philadelphia
- **Go to [Pollev.com/philadelphia462](https://Pollev.com/philadelphia462) or TEXT the word PHILADELPHIA462 to 22333**





## Walking distances

While Walking distances to Location B are generally shorter than to Site A, Site B's walking paths cross vehicular driving lanes.

Walking paths to Location A, while longer, avoid crossing traffic lanes.

**Graphic Legend**

	Approx. Walking Distances
City Blocks	Measured in City Blocks
( FT )	in Feet



# Walking Distance



Location A is a quarter of a mile (or 4 city blocks) from Rowland Avenue.

Location B is a tenth of a mile (or one city block) from Rowland Avenue.



# How important is the walking distance for students to the new school?

Not  
important

Neutral

Important

Very  
Important











## Access to Location A

Clear, unobstructed lines of sight.

Re-designed Rowland drive lanes, with separate, dedicated parent drop-off and bus circuits.

Walking path to Ryan Ave drop-off.

### Graphic Legend

-  Ryan Ave travel paths
-  Bus
-  Lincoln travel paths
-  Car
- New K-8**
-  Vehicular & Walking Access
-  Walking Path



# Access to Location B

Traffic is constrained.

Bus drop-off requires shared use of an extended Lincoln HS vehicular loop.

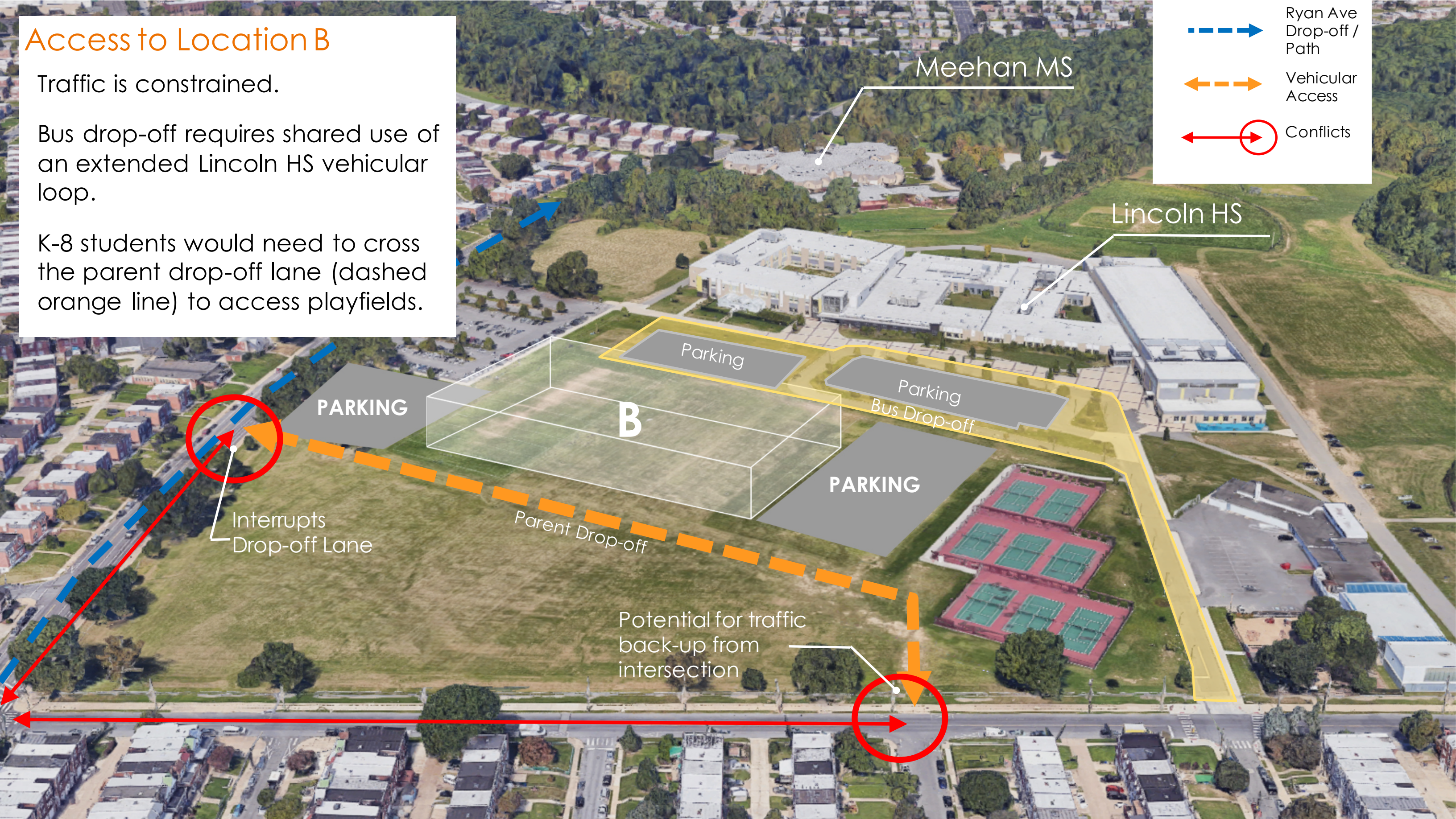
K-8 students would need to cross the parent drop-off lane (dashed orange line) to access playfields.

Graphic Legend

Ryan Ave Drop-off / Path

Vehicular Access

Conflicts





# Traffic

Location A provides separate driveways for school buses and cars and alleviates traffic congestion on Ryan and Rowland Avenues.

Location B has higher visibility from Ryan and Rowland Avenues.





# How important are separate driveways for school buses and cars?

Not  
important

Neutral

Important

Very  
important

# How important is reducing traffic congestion on Ryan and Rowland Avenues?

Not  
important **A**

Neutral **B**

Important **C**

Very  
important **D**



# Safety

Location A brings activity, lighting and security to the site near Pennypack Park.

Location B has higher visibility from Ryan and Rowland Avenues.





# How important is visibility from Ryan and Rowland Avenues?

Not  
important

Neutral

Important

Very  
important

# How important is bringing activity, lighting and security near Pennypack Park?

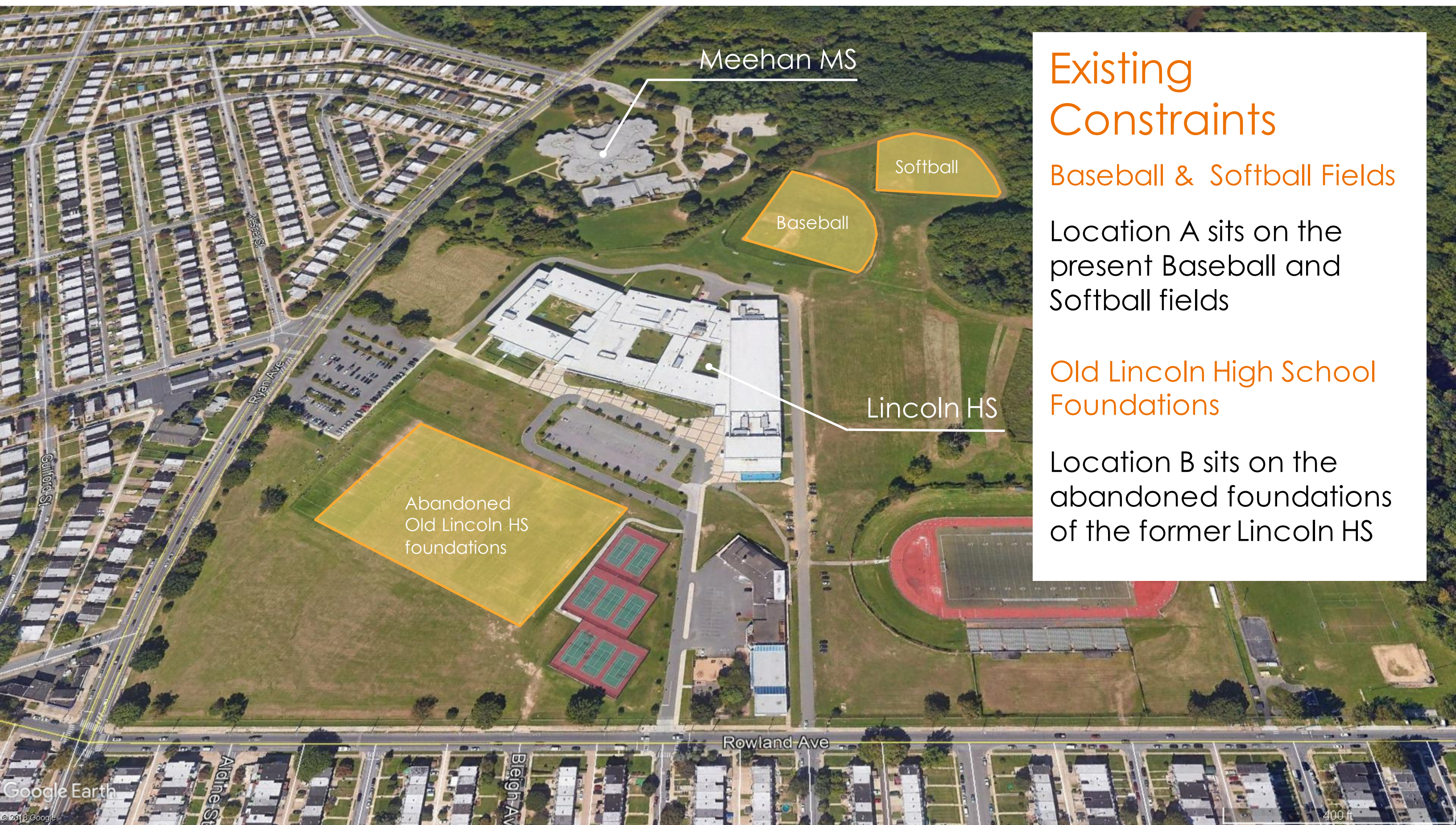
Not  
important

Neutral

Important

Very  
important





## Existing Constraints

### Baseball & Softball Fields

Location A sits on the present Baseball and Softball fields

### Old Lincoln High School Foundations

Location B sits on the abandoned foundations of the former Lincoln HS



# Environmental Considerations



Location A has clean soil and is easier to construct a new building.

Location B has remaining foundations from the old Lincoln High School building and will cost money to remove.



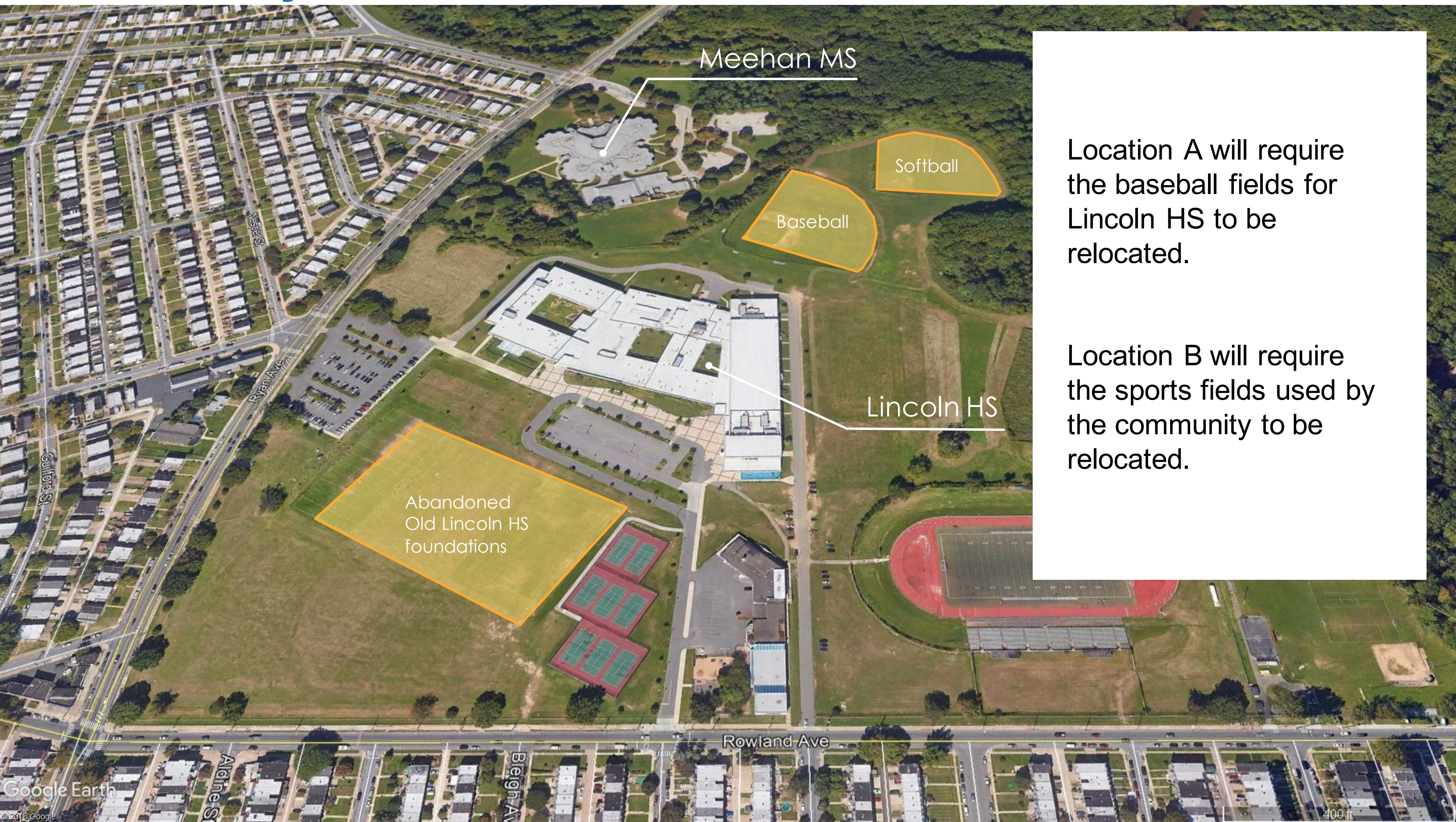
# What is more important?

Higher budget  
for site  
development

Higher budget  
for the  
building



# Community Use



Location A will require the baseball fields for Lincoln HS to be relocated.

Location B will require the sports fields used by the community to be relocated.



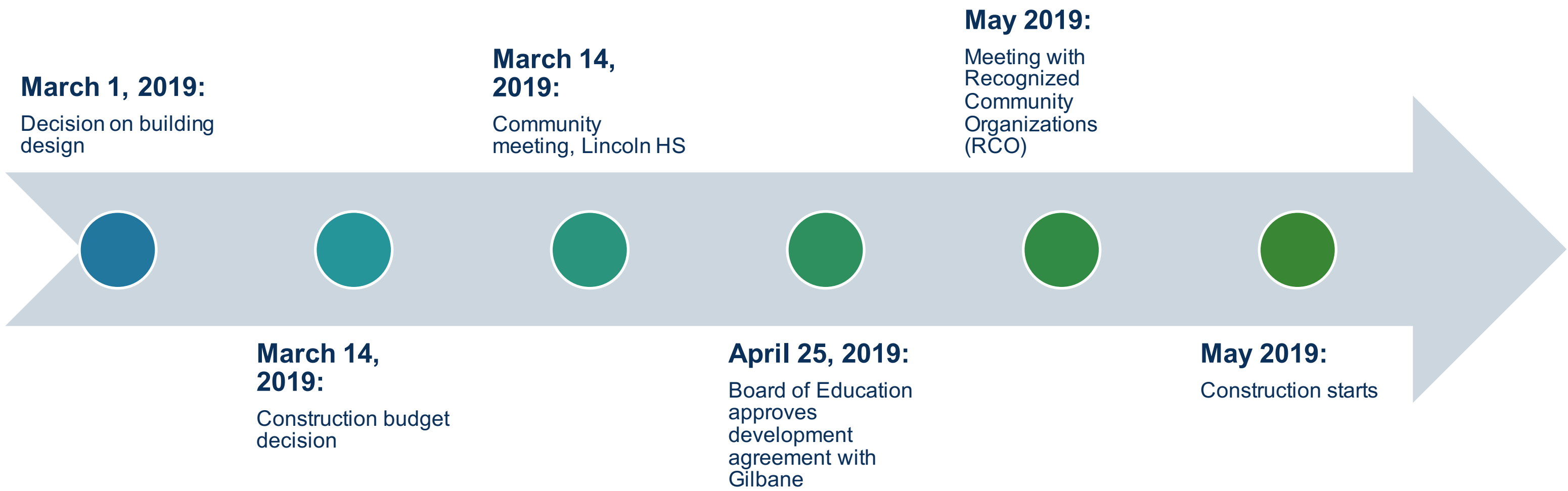
# What is your preference?

Relocate  
baseball  
field

Relocate  
sports  
fields



# Next Steps



- Use enrollment study to confirm building capacity, educational program and building floor plans.
- Board of Education to review Building Design on March 1 and approve Construction Budget. on March 14, 2019.
- Meet with community on March 14, 2019 at Lincoln HS to present final site selection and building design.
- Apply for building permits.
- Construction starts in May 2019.



# Additional Information

For additional information please visit the project website:

- <https://www.philasd.org/capitalprograms/newschoolonryanave/>

Online surveys can be completed by February 28, 2019 at:

- <https://goo.gl/forms/00sY5RrBOFmU2wFq1>

To provide feedback please send an email to:

- [capitalprograms@philasd.org](mailto:capitalprograms@philasd.org)



# Question and Comments on Potential Locations

