



THE SCHOOL DISTRICT OF PHILADELPHIA

BOARD OF EDUCATION
Office of Capital Programs
440 North Broad Street, 3rd Floor – Suite 371
Philadelphia, PA 19130

TELEPHONE: (215) 400-4730

Addendum No. 2

Subject: Bid B-106 C of 2017/18 for General Contractor Services on ADA Ramp and Walkway Repairs

Location: Bodine High School

_ This Addendum, dated February 14, 2019, shall modify and become part of the Contract Documents. Any items not mentioned herein, or affected by, shall remain strictly in accordance with the original document.

Questions and Answers:

1. Question: On Can the MBE/WBE Participation goals be reduced due to limited scope and area of work?

Answer: *No.*

2. Question: Do you have existing plumbing plans for tie in for new drains? Is there a crawl space under the bathroom or is it slab on grade?

Answer: *It is unknown if existing plumbing plans exist at this time. It is understood that the area in the Girls Bathroom in question is slab on grade and that a crawl space does not exist. Please refer to drawing P100 and plumbing work specifications, issued as part of this addendum.*

3. Question: Do we need to remove the existing lighting and conduit? If so; please provide plans and will new fixtures and conduit be needed?

Answer: *At the area of the new interior ramp, an electrical line will need to be rerouted when the top of opening at the entry to the Girls Bathroom is to be raised. Existing lighting and conduit at the underside of the exterior walkway to be replaced shall be removed, stored, and reinstalled following the installation of the new ramp structures.*

Addendum No. 2 (cont'd)

4. Question: Existing chain link fence and gates at courtyard A & C, are we to remove and reinstall?

Answer: *Existing chain link fences at courtyards A and C are to be removed prior to walkway replacement, stored, and reinstalled after the walkway replacement has been completed.*

Additional Item(s) Regarding this Construction Bid:

- a. As noted in Addendum No. 1 for this project, the bid opening shall occur on Thursday, February 21, 2019, at 2:00 PM (Bids shall be due on Thursday, February 21, 2019, at 2:00 PM).
- b. A Bid Desclope Meeting shall occur immediately following the bid opening at the SDP Main Office for the winning bidder on the afternoon of Thursday, February 21, 2019. A principal or other person authorized to make commitments for the apparent low bidder must be in attendance.

End of Addendum No. 2

Attachments (2)

BODINE STRUCTURAL REPAIR AND ADA RAMP
SDP CONTRACT NO. B-106C OF 2017/18

PLUMBING INDEX

Section No.	Specification Title	Issue / Date	Addendum No. 1 2/14/19						
220000	Plumbing Index	x							
220010	Basic Plumbing Requirements	x							
220518	Escutcheons for Plumbing Piping	x							
220523	General-Duty Valves for Plumbing Piping	x							
220529	Hangers and Supports for Plumbing Piping and Equipment	x							
221116	Domestic Water Piping	x							
221119	Domestic Water Piping Specialties	x							
221316	Sanitary Waste and Vent Piping	x							
221319	Sanitary Waste Piping Specialties	x							
224216.13	Commercial Lavatories	x							

SECTION 220518 - ESCUTCHEONS FOR PLUMBING PIPING

PART 1 - GENERAL

1.1 RELATED DOCUMENTS

- A. Drawings and general provisions of the Contract, including General and Supplementary Conditions and Division 01 Specification Sections, apply to this Section.

1.2 SUMMARY

- A. Section Includes:
 - 1. Escutcheons.
 - 2. Floor plates.

1.3 ACTION SUBMITTALS

- A. Product Data: For each type of product indicated.

PART 2 - PRODUCTS

2.1 ESCUTCHEONS

- A. One-Piece, Cast-Brass Type: With polished, chrome-plated finish and setscrew fastener.
- B. One-Piece, Deep-Pattern Type: Deep-drawn, box-shaped brass with chrome-plated finish and spring-clip fasteners.
- C. Split-Casting Brass Type: With polished, chrome-plated finish and with concealed hinge and setscrew.

2.2 FLOOR PLATES

- A. One-Piece Floor Plates: Cast-iron flange with holes for fasteners.
- B. Split-Casting Floor Plates: Cast brass with concealed hinge.

PART 3 - EXECUTION

3.1 INSTALLATION

- A. Install escutcheons for piping penetrations of walls, ceilings, and finished floors.
- B. Install escutcheons with ID to closely fit around pipe, tube, and insulation of insulated piping and with OD that completely covers opening.
 - 1. Escutcheons for New Piping:
 - a. Piping with Fitting or Sleeve Protruding from Wall: One-piece, deep-pattern type.
 - b. Chrome-Plated Piping: One-piece, cast-brass type with polished, chrome-plated finish.
 - c. Insulated Piping: One-piece, stamped-steel type.
 - d. Bare Piping at Wall and Floor Penetrations in Finished Spaces: One-piece, cast-brass type with polished, chrome-plated finish.
 - e. Bare Piping at Ceiling Penetrations in Finished Spaces: One-piece, cast-brass or split-casting brass type with polished, chrome-plated finish.
 - f. Bare Piping in Unfinished Service Spaces: One-piece, cast-brass type with polished, chrome-plated finish.
 - g. Bare Piping in Equipment Rooms: One-piece, cast-brass type with polished, chrome-plated finish.
 - 2. Escutcheons for Existing Piping:
 - a. Chrome-Plated Piping: Split-casting brass type with polished, chrome-plated finish.
 - b. Insulated Piping: Split-plate, stamped-steel type with concealed hinge.
 - c. Bare Piping at Wall and Floor Penetrations in Finished Spaces: Split-casting brass type with polished, chrome-plated finish.
 - d. Bare Piping at Ceiling Penetrations in Finished Spaces: Split-casting brass type with polished, chrome-plated finish.
 - e. Bare Piping in Unfinished Service Spaces: Split-casting brass type with polished, chrome-plated finish.
 - f. Bare Piping in Equipment Rooms: Split-casting brass type with polished, chrome-plated finish.
- C. Install floor plates for piping penetrations of equipment-room floors.
- D. Install floor plates with ID to closely fit around pipe, tube, and insulation of piping and with OD that completely covers opening.
 - 1. New Piping: One-piece, floor-plate type.
 - 2. Existing Piping: Split-casting, floor-plate type.

3.2 FIELD QUALITY CONTROL

- A. Replace broken and damaged escutcheons and floor plates using new materials.

END OF SECTION 220518

SECTION 220523 - GENERAL-DUTY VALVES FOR PLUMBING PIPING

PART 1 - GENERAL

1.1 RELATED DOCUMENTS

- A. Drawings and general provisions of the Contract, including General and Supplementary Conditions and Division 01 Specification Sections, apply to this Section.

1.2 SUMMARY

- A. Section Includes:
 - 1. Bronze angle valves.
 - 2. Bronze ball valves.
 - 3. Iron, grooved-end butterfly valves.
 - 4. Bronze swing check valves.
 - 5. Iron swing check valves.
 - 6. Bronze globe valves.
 - 7. Iron globe valves.

1.3 DEFINITIONS

- A. CWP: Cold working pressure.
- B. EPDM: Ethylene propylene copolymer rubber.
- C. NBR: Acrylonitrile-butadiene, Buna-N, or nitrile rubber.
- D. NRS: Nonrising stem.
- E. OS&Y: Outside screw and yoke.
- F. RS: Rising stem.
- G. SWP: Steam working pressure.

1.4 ACTION SUBMITTALS

- A. Product Data: For each type of valve indicated.

1.5 QUALITY ASSURANCE

- A. Source Limitations for Valves: Obtain each type of valve from single source from single manufacturer.
- B. ASME Compliance:
 - 1. ASME B16.10 and ASME B16.34 for ferrous valve dimensions and design criteria.
 - 2. ASME B31.1 for power piping valves.
 - 3. ASME B31.9 for building services piping valves.
- C. NSF Compliance: NSF 61 for valve materials for potable-water service.

1.6 DELIVERY, STORAGE, AND HANDLING

- A. Prepare valves for shipping as follows:
 - 1. Protect internal parts against rust and corrosion.
 - 2. Protect threads, flange faces, grooves, and weld ends.
 - 3. Set angle, gate, and globe valves closed to prevent rattling.
 - 4. Set ball and plug valves open to minimize exposure of functional surfaces.
 - 5. Set butterfly valves closed or slightly open.
 - 6. Block check valves in either closed or open position.
- B. Use the following precautions during storage:
 - 1. Maintain valve end protection.
 - 2. Store valves indoors and maintain at higher than ambient dew point temperature. If outdoor storage is necessary, store valves off the ground in watertight enclosures.
- C. Use sling to handle large valves; rig sling to avoid damage to exposed parts. Do not use handwheels or stems as lifting or rigging points.

PART 2 - PRODUCTS

2.1 GENERAL REQUIREMENTS FOR VALVES

- A. Refer to valve schedule articles for applications of valves.
- B. Valve Pressure and Temperature Ratings: Not less than indicated and as required for system pressures and temperatures.
- C. Valve Sizes: Same as upstream piping unless otherwise indicated.

D. Valve Actuator Types:

1. Gear Actuator: For quarter-turn valves NPS 8 and larger.
2. Handwheel: For valves other than quarter-turn types.
3. Handlever: For quarter-turn valves NPS 6 and smaller.
4. Wrench: For plug valves with square heads. Furnish Owner with 1 wrench for every 5 plug valves, for each size square plug-valve head.

E. Valves in Insulated Piping: With 2-inch stem extensions and the following features:

1. Gate Valves: With rising stem.
2. Ball Valves: With extended operating handle of non-thermal-conductive material, and protective sleeve that allows operation of valve without breaking the vapor seal or disturbing insulation.
3. Butterfly Valves: With extended neck.

F. Valve-End Connections:

1. Flanged: With flanges according to ASME B16.1 for iron valves.
2. Grooved: With grooves according to AWWA C606.
3. Solder Joint: With sockets according to ASME B16.18.
4. Threaded: With threads according to ASME B1.20.1.

G. Valve Bypass and Drain Connections: MSS SP-45.

2.2 BRONZE ANGLE VALVES

A. Class 125, Bronze Angle Valves with Bronze Disc:

1. Description:
 - a. Standard: MSS SP-80, Type 1.
 - b. CWP Rating: 200 psig.
 - c. Body Material: ASTM B 62, bronze with integral seat and screw-in bonnet.
 - d. Ends: Threaded.
 - e. Stem and Disc: Bronze.
 - f. Packing: Asbestos free.
 - g. Handwheel: Malleable iron, bronze, or aluminum.

2.3 BRONZE BALL VALVES

A. Two-Piece, Full-Port, Bronze Ball Valves with Stainless-Steel Trim:

1. Description:

- a. Standard: MSS SP-110.
- b. SWP Rating: 150 psig.
- c. CWP Rating: 600 psig.
- d. Body Design: Two piece.
- e. Body Material: Bronze.
- f. Ends: Threaded.
- g. Seats: PTFE or TFE.
- h. Stem: Stainless steel.
- i. Ball: Stainless steel, vented.
- j. Port: Full.

B. Three-Piece, Full-Port, Bronze Ball Valves with Stainless-Steel Trim:

1. Description:

- a. Standard: MSS SP-110.
- b. SWP Rating: 150 psig.
- c. CWP Rating: 600 psig.
- d. Body Design: Three piece.
- e. Body Material: Bronze.
- f. Ends: Threaded.
- g. Seats: PTFE or TFE.
- h. Stem: Stainless steel.
- i. Ball: Stainless steel, vented.
- j. Port: Full.

2.4 IRON, GROOVED-END BUTTERFLY VALVES

A. 175 CWP, Iron, Grooved-End Butterfly Valves:

1. Description:

- a. Standard: MSS SP-67, Type I.
- b. CWP Rating: 175 psig.
- c. Body Material: Coated, ductile iron.
- d. Stem: Two-piece stainless steel.
- e. Disc: Coated, ductile iron.
- f. Seal: EPDM.

2.5 BRONZE SWING CHECK VALVES

A. Class 125, Bronze Swing Check Valves with Bronze Disc:

1. Description:
 - a. Standard: MSS SP-80, Type 3.
 - b. CWP Rating: 200 psig.
 - c. Body Design: Horizontal flow.
 - d. Body Material: ASTM B 62, bronze.
 - e. Ends: Threaded.
 - f. Disc: Bronze.

2.6 IRON SWING CHECK VALVES

- A. Class 125, Iron Swing Check Valves with Metal Seats:

1. Description:
 - a. Standard: MSS SP-71, Type I.
 - b. CWP Rating: 200 psig.
 - c. Body Design: Clear or full waterway.
 - d. Body Material: ASTM A 126, gray iron with bolted bonnet.
 - e. Ends: Flanged.
 - f. Trim: Bronze.
 - g. Gasket: Asbestos free.

2.7 BRONZE GLOBE VALVES

- A. Class 125, Bronze Globe Valves with Bronze Disc:

1. Description:
 - a. Standard: MSS SP-80, Type 1.
 - b. CWP Rating: 200 psig.
 - c. Body Material: ASTM B 62, bronze with integral seat and screw-in bonnet.
 - d. Ends: Threaded or solder joint.
 - e. Stem and Disc: Bronze.
 - f. Packing: Asbestos free.
 - g. Handwheel: Malleable iron, bronze, or aluminum.

2.8 IRON GLOBE VALVES

- A. Class 125, Iron Globe Valves:

1. Description:

- a. Standard: MSS SP-85, Type I.
- b. CWP Rating: 200 psig.
- c. Body Material: ASTM A 126, gray iron with bolted bonnet.
- d. Ends: Flanged.
- e. Trim: Bronze.
- f. Packing and Gasket: Asbestos free.

PART 3 - EXECUTION

3.1 EXAMINATION

- A. Examine valve interior for cleanliness, freedom from foreign matter, and corrosion. Remove special packing materials, such as blocks, used to prevent disc movement during shipping and handling.
- B. Operate valves in positions from fully open to fully close. Examine guides and seats made accessible by such operations.
- C. Examine threads on valve and mating pipe for form and cleanliness.
- D. Examine mating flange faces for conditions that might cause leakage. Check bolting for proper size, length, and material. Verify that gasket is of proper size, that its material composition is suitable for service, and that it is free from defects and damage.
- E. Do not attempt to repair defective valves; replace with new valves.

3.2 VALVE INSTALLATION

- A. Install valves with unions or flanges at each piece of equipment arranged to allow service, maintenance, and equipment removal without system shutdown.
- B. Locate valves for easy access and provide separate support where necessary.
- C. Install valves in horizontal piping with stem at or above center of pipe.
- D. Install valves in position to allow full stem movement.
- E. Install check valves for proper direction of flow and as follows:
 1. Swing Check Valves: In horizontal position with hinge pin level.
 2. Center-Guided and Plate-Type Check Valves: In horizontal or vertical position, between flanges.
 3. Lift Check Valves: With stem upright and plumb.

3.3 ADJUSTING

- A. Adjust or replace valve packing after piping systems have been tested and put into service but before final adjusting and balancing. Replace valves if persistent leaking occurs.

3.4 GENERAL REQUIREMENTS FOR VALVE APPLICATIONS

- A. If valve applications are not indicated, use the following:
 - 1. Throttling Service: Globe, ball, or butterfly valves.
 - 2. Pump-Discharge Check Valves:
 - a. NPS 2 and Smaller: Bronze swing check valves with bronze or nonmetallic disc.
- B. If valves with specified SWP classes or CWP ratings are not available, the same types of valves with higher SWP classes or CWP ratings may be substituted.
- C. Select valves, except wafer types, with the following end connections:
 - 1. For Copper Tubing, NPS 2 and Smaller: Threaded ends except where solder-joint valve-end option is indicated in valve schedules below.
 - 2. For Copper Tubing, NPS 2-1/2 to NPS 4: Flanged ends except where threaded valve-end option is indicated in valve schedules below.
 - 3. For Copper Tubing, NPS 5 and Larger: Flanged ends.
 - 4. For Steel Piping, NPS 2 and Smaller: Threaded ends.
 - 5. For Steel Piping, NPS 2-1/2 to NPS 4: Flanged ends except where threaded valve-end option is indicated in valve schedules below.
 - 6. For Steel Piping, NPS 5 and Larger: Flanged ends.
 - 7. For Grooved-End Copper Tubing and Steel Piping: Valve ends may be grooved.

3.5 DOMESTIC, HOT- AND COLD-WATER VALVE SCHEDULE

- A. Pipe NPS 2 and Smaller:
 - 1. Bronze Valves: May be provided with solder-joint ends instead of threaded ends.
 - 2. Bronze Angle Valves: Class 125, bronze disc.
 - 3. Ball Valves: Two piece, full port, bronze with stainless-steel trim.
 - 4. Bronze Swing Check Valves: Class 125, bronze disc.
 - 5. Bronze Globe Valves: Class 125, bronze disc.
- B. Pipe NPS 2-1/2 and Larger:
 - 1. Iron Ball Valves: Class 150.
 - 2. Iron, Grooved-End Butterfly Valves: 175 CWP.

3. Iron Swing Check Valves: Class 125, nonmetallic-to-metal seats.
4. Iron Globe Valves: Class 125.

END OF SECTION 220523

SECTION 220529 - HANGERS AND SUPPORTS FOR PLUMBING PIPING AND EQUIPMENT

PART 1 - GENERAL

1.1 RELATED DOCUMENTS

- A. Drawings and general provisions of the Contract, including General and Supplementary Conditions and Division 01 Specification Sections, apply to this Section.

1.2 SUMMARY

A. Section Includes:

1. Metal pipe hangers and supports.
2. Trapeze pipe hangers.
3. Metal framing systems.
4. Fastener systems.
5. Pipe stands.
6. Equipment supports.

B. Related Sections:

1. Section 055000 "Metal Fabrications" for structural-steel shapes and plates for trapeze hangers for pipe and equipment supports.
2. Section 220550 "Vibration Controls for Plumbing Piping and Equipment" for vibration isolation devices.

1.3 DEFINITIONS

- A. MSS: Manufacturers Standardization Society of The Valve and Fittings Industry Inc.

1.4 PERFORMANCE REQUIREMENTS

- A. Delegated Design: Design trapeze pipe hangers and equipment supports, including comprehensive engineering analysis by a qualified professional engineer, using performance requirements and design criteria indicated.
- B. Structural Performance: Hangers and supports for plumbing piping and equipment shall withstand the effects of gravity loads and stresses within limits and under conditions indicated according to ASCE/SEI 7.
 1. Design supports for multiple pipes, including pipe stands, capable of supporting combined weight of supported systems, system contents, and test water.

2. Design equipment supports capable of supporting combined operating weight of supported equipment and connected systems and components.
3. Design seismic-restraint hangers and supports for piping and equipment and obtain approval from authorities having jurisdiction.

1.5 ACTION SUBMITTALS

- A. Product Data: For each type of product indicated.

1.6 QUALITY ASSURANCE

- A. Structural Steel Welding Qualifications: Qualify procedures and personnel according to AWS D1.1/D1.1M, "Structural Welding Code - Steel."
- B. Pipe Welding Qualifications: Qualify procedures and operators according to ASME Boiler and Pressure Vessel Code.

PART 2 - PRODUCTS

2.1 METAL PIPE HANGERS AND SUPPORTS

- A. Carbon-Steel Pipe Hangers and Supports:
 1. Description: MSS SP-58, Types 1 through 58, factory-fabricated components.
 2. Galvanized Metallic Coatings: Pre-galvanized or hot dipped.
 3. Nonmetallic Coatings: Plastic coating, jacket, or liner.
 4. Padded Hangers: Hanger with fiberglass or other pipe insulation pad or cushion to support bearing surface of piping.
 5. Hanger Rods: Continuous-thread rod, nuts, and washer made of carbon steel.
- B. Copper Pipe Hangers:
 1. Description: MSS SP-58, Types 1 through 58, copper-coated-steel, factory-fabricated components.
 2. Hanger Rods: Continuous-thread rod, nuts, and washer made of stainless steel.

2.2 TRAPEZE PIPE HANGERS

- A. Description: MSS SP-69, Type 59, shop- or field-fabricated pipe-support assembly made from structural carbon-steel shapes with MSS SP-58 carbon-steel hanger rods, nuts, saddles, and U-bolts.

2.3 METAL FRAMING SYSTEMS

A. MFMA Manufacturer Metal Framing Systems:

1. Manufacturers: Subject to compliance with requirements, provide products by one of the following:
2. Description: Shop- or field-fabricated pipe-support assembly for supporting multiple parallel pipes.
3. Standard: MFMA-4.
4. Channels: Continuous slotted steel channel with in-turned lips.
5. Channel Nuts: Formed or stamped steel nuts or other devices designed to fit into channel slot and, when tightened, prevent slipping along channel.
6. Hanger Rods: Continuous-thread rod, nuts, and washer made of stainless steel.
7. Metallic Coating: Hot-dipped galvanized.
8. Paint Coating: Epoxy.
9. Plastic Coating: PVC.

2.4 FASTENER SYSTEMS

- ### A. Mechanical-Expansion Anchors: Insert-wedge-type, stainless-steel anchors, for use in hardened portland cement concrete; with pull-out, tension, and shear capacities appropriate for supported loads and building materials where used.

2.5 PIPE STANDS

- ### A. General Requirements for Pipe Stands: Shop- or field-fabricated assemblies made of manufactured corrosion-resistant components to support roof-mounted piping.
- ### B. Compact Pipe Stand: One-piece plastic unit with integral-rod roller, pipe clamps, or V-shaped cradle to support pipe, for roof installation without membrane penetration.

2.6 EQUIPMENT SUPPORTS

- ### A. Description: Welded, shop- or field-fabricated equipment support made from structural carbon-steel shapes.

2.7 MISCELLANEOUS MATERIALS

- ### A. Structural Steel: ASTM A 36/A 36M, carbon-steel plates, shapes, and bars; black and galvanized.
- ### B. Grout: ASTM C 1107, factory-mixed and -packaged, dry, hydraulic-cement, non-shrink and nonmetallic grout; suitable for interior and exterior applications.
1. Properties: Non-staining, noncorrosive, and nongaseous.

2. Design Mix: 5000-psi, 28-day compressive strength.

PART 3 - EXECUTION

3.1 HANGER AND SUPPORT INSTALLATION

- A. Metal Pipe-Hanger Installation: Comply with MSS SP-69 and MSS SP-89. Install hangers, supports, clamps, and attachments as required to properly support piping from the building structure.
- B. Metal Trapeze Pipe-Hanger Installation: Comply with MSS SP-69 and MSS SP-89. Arrange for grouping of parallel runs of horizontal piping, and support together on field-fabricated trapeze pipe hangers.
 1. Pipes of Various Sizes: Support together and space trapezes for smallest pipe size or install intermediate supports for smaller diameter pipes as specified for individual pipe hangers.
 2. Field fabricate from ASTM A 36/A 36M, carbon-steel shapes selected for loads being supported. Weld steel according to AWS D1.1/D1.1M.
- C. Metal Framing System Installation: Arrange for grouping of parallel runs of piping, and support together on field-assembled metal framing systems.
- D. Fastener System Installation:
 1. Install mechanical-expansion anchors in concrete after concrete is placed and completely cured. Install fasteners according to manufacturer's written instructions.
- E. Pipe Stand Installation:
 1. Pipe Stand Types except Curb-Mounted Type: Assemble components and mount on smooth roof surface. Do not penetrate roof membrane.
- F. Install hangers and supports complete with necessary attachments, inserts, bolts, rods, nuts, washers, and other accessories.
- G. Equipment Support Installation: Fabricate from welded-structural-steel shapes.
- H. Install hangers and supports to allow controlled thermal and seismic movement of piping systems, to permit freedom of movement between pipe anchors, and to facilitate action of expansion joints, expansion loops, expansion bends, and similar units.
- I. Install lateral bracing with pipe hangers and supports to prevent swaying.
- J. Install building attachments within concrete slabs or attach to structural steel. Install additional attachments at concentrated loads, including valves, flanges, and strainers, NPS 2-

1/2 and larger and at changes in direction of piping. Install concrete inserts before concrete is placed; fasten inserts to forms and install reinforcing bars through openings at top of inserts.

- K. Load Distribution: Install hangers and supports so that piping live and dead loads and stresses from movement will not be transmitted to connected equipment.
- L. Pipe Slopes: Install hangers and supports to provide indicated pipe slopes and to not exceed maximum pipe deflections allowed by ASME B31.9 for building services piping.
- M. Insulated Piping:
 - 1. Attach clamps and spacers to piping.
 - a. Piping Operating above Ambient Air Temperature: Clamp may project through insulation.
 - b. Piping Operating below Ambient Air Temperature: Use thermal-hanger shield insert with clamp sized to match OD of insert.
 - c. Do not exceed pipe stress limits allowed by ASME B31.9 for building services piping.
 - 2. Install MSS SP-58, Type 39, protection saddles if insulation without vapor barrier is indicated. Fill interior voids with insulation that matches adjoining insulation.
 - 3. Install MSS SP-58, Type 40, protective shields on cold piping with vapor barrier. Shields shall span an arc of 180 degrees.
 - 4. Shield Dimensions for Pipe: Not less than the following:
 - a. NPS 1/4 to NPS 3-1/2: 12 inches long and 0.048 inch thick.
 - b. NPS 4: 12 inches long and 0.06 inch thick.
 - c. NPS 5 and NPS 6: 18 inches long and 0.06 inch thick.
 - d. NPS 8 to NPS 14: 24 inches long and 0.075 inch thick.
 - e. NPS 16 to NPS 24: 24 inches long and 0.105 inch thick.
 - 5. Pipes NPS 8 and Larger: Include wood or reinforced calcium-silicate-insulation inserts of length at least as long as protective shield.
 - 6. Thermal-Hanger Shields: Install with insulation same thickness as piping insulation.

3.2 EQUIPMENT SUPPORTS

- A. Fabricate structural-steel stands to suspend equipment from structure overhead or to support equipment above floor.
- B. Grouting: Place grout under supports for equipment and make bearing surface smooth.
- C. Provide lateral bracing, to prevent swaying, for equipment supports.

3.3 METAL FABRICATIONS

- A. Cut, drill, and fit miscellaneous metal fabrications for trapeze pipe hangers and equipment supports.
- B. Fit exposed connections together to form hairline joints. Field weld connections that cannot be shop welded because of shipping size limitations.
- C. Field Welding: Comply with AWS D1.1/D1.1M procedures for shielded, metal arc welding; appearance and quality of welds; and methods used in correcting welding work; and with the following:
 - 1. Use materials and methods that minimize distortion and develop strength and corrosion resistance of base metals.
 - 2. Obtain fusion without undercut or overlap.
 - 3. Remove welding flux immediately.
 - 4. Finish welds at exposed connections so no roughness shows after finishing and so contours of welded surfaces match adjacent contours.

3.4 ADJUSTING

- A. Hanger Adjustments: Adjust hangers to distribute loads equally on attachments and to achieve indicated slope of pipe.
- B. Trim excess length of continuous-thread hanger and support rods to 1-1/2 inches.

3.5 PAINTING

- A. Touchup: Clean field welds and abraded areas of shop paint. Paint exposed areas immediately after erecting hangers and supports. Use same materials as used for shop painting. Comply with SSPC-PA 1 requirements for touching up field-painted surfaces.
 - 1. Apply paint by brush or spray to provide a minimum dry film thickness of 2.0 mils.
- B. Touchup: Cleaning and touchup painting of field welds, bolted connections, and abraded areas of shop paint on miscellaneous metal are specified in Section 099123 "Interior Painting."
- C. Galvanized Surfaces: Clean welds, bolted connections, and abraded areas and apply galvanizing-repair paint to comply with ASTM A 780.

3.6 HANGER AND SUPPORT SCHEDULE

- A. Specific hanger and support requirements are in Sections specifying piping systems and equipment.
- B. Comply with MSS SP-69 for pipe-hanger selections and applications that are not specified in piping system Sections.

- C. Use hangers and supports with galvanized metallic coatings for piping and equipment that will not have field-applied finish.
- D. Use nonmetallic coatings on attachments for electrolytic protection where attachments are in direct contact with copper tubing.
- E. Use carbon-steel pipe hangers and supports, metal trapeze pipe hangers, and metal framing systems and attachments for general service applications.
- F. Use stainless-steel attachments for hostile environment applications.
- G. Use copper-plated pipe hangers and copper attachments for copper piping and tubing.
- H. Use padded hangers for piping that is subject to scratching.
- I. Horizontal-Piping Hangers and Supports: Unless otherwise indicated and except as specified in piping system Sections, install the following types:
 - 1. Adjustable, Steel Clevis Hangers (MSS Type 1): For suspension of non-insulated or insulated, stationary pipes NPS 1/2 to NPS 30.
 - 2. Carbon- or Alloy-Steel, Double-Bolt Pipe Clamps (MSS Type 3): For suspension of pipes NPS 3/4 to NPS 36, requiring clamp flexibility and up to 4 inches of insulation.
 - 3. Steel Pipe Clamps (MSS Type 4): For suspension of cold and hot pipes NPS 1/2 to NPS 24 if little or no insulation is required.
 - 4. Pipe Hangers (MSS Type 5): For suspension of pipes NPS 1/2 to NPS 4, to allow off-center closure for hanger installation before pipe erection.
 - 5. Adjustable, Swivel Split- or Solid-Ring Hangers (MSS Type 6): For suspension of non-insulated, stationary pipes NPS 3/4 to NPS 8.
 - 6. Adjustable, Steel Band Hangers (MSS Type 7): For suspension of non-insulated, stationary pipes NPS 1/2 to NPS 8.
 - 7. Adjustable Band Hangers (MSS Type 9): For suspension of non-insulated, stationary pipes NPS 1/2 to NPS 8.
 - 8. U-Bolts (MSS Type 24): For support of heavy pipes NPS 1/2 to NPS 30.
 - 9. Pipe Saddle Supports (MSS Type 36): For support of pipes NPS 4 to NPS 36, with steel-pipe base stanchion support and cast-iron floor flange or carbon-steel plate.
 - 10. Pipe Stanchion Saddles (MSS Type 37): For support of pipes NPS 4 to NPS 36, with steel-pipe base stanchion support and cast-iron floor flange or carbon-steel plate, and with U-bolt to retain pipe.
 - 11. Adjustable Pipe Saddle Supports (MSS Type 38): For stanchion-type support for pipes NPS 2-1/2 to NPS 36 if vertical adjustment is required, with steel-pipe base stanchion support and cast-iron floor flange.
 - 12. Single-Pipe Rolls (MSS Type 41): For suspension of pipes NPS 1 to NPS 30, from two rods if longitudinal movement caused by expansion and contraction might occur.
 - 13. Complete Pipe Rolls (MSS Type 44): For support of pipes NPS 2 to NPS 42 if longitudinal movement caused by expansion and contraction might occur but vertical adjustment is not necessary.

14. Pipe Roll and Plate Units (MSS Type 45): For support of pipes NPS 2 to NPS 24 if small horizontal movement caused by expansion and contraction might occur and vertical adjustment is not necessary.
 15. Adjustable Pipe Roll and Base Units (MSS Type 46): For support of pipes NPS 2 to NPS 30 if vertical and lateral adjustment during installation might be required in addition to expansion and contraction.
- J. Vertical-Piping Clamps: Unless otherwise indicated and except as specified in piping system Sections, install the following types:
1. Extension Pipe or Riser Clamps (MSS Type 8): For support of pipe risers NPS 3/4 to NPS 24.
 2. Carbon- or Alloy-Steel Riser Clamps (MSS Type 42): For support of pipe risers NPS 3/4 to NPS 24 if longer ends are required for riser clamps.
- K. Hanger-Rod Attachments: Unless otherwise indicated and except as specified in piping system Sections, install the following types:
1. Swivel Turnbuckles (MSS Type 15): For use with MSS Type 11, split pipe rings.
 2. Malleable-Iron Sockets (MSS Type 16): For attaching hanger rods to various types of building attachments.
- L. Building Attachments: Unless otherwise indicated and except as specified in piping system Sections, install the following types:
1. Side-Beam or Channel Clamps (MSS Type 20): For attaching to bottom flange of beams, channels, or angles.
 2. C-Clamps (MSS Type 23): For structural shapes.
 3. Side-Beam Clamps (MSS Type 27): For bottom of steel I-beams.
- M. Saddles and Shields: Unless otherwise indicated and except as specified in piping system Sections, install the following types:
1. Thermal-Hanger Shield Inserts: For supporting insulated pipe.
- N. Spring Hangers and Supports: Unless otherwise indicated and except as specified in piping system Sections, install the following types:
1. Spring Cushions (MSS Type 48): For light loads if vertical movement does not exceed 1-1/4 inches.
 2. Spring Sway Braces (MSS Type 50): To retard sway, shock, vibration, or thermal expansion in piping systems.
- O. Comply with MSS SP-69 for trapeze pipe-hanger selections and applications that are not specified in piping system Sections.
- P. Comply with MFMA-103 for metal framing system selections and applications that are not specified in piping system Sections.

- Q. Use mechanical-expansion anchors instead of building attachments where required in concrete construction.

END OF SECTION 220529

SECTION 221116 - DOMESTIC WATER PIPING

PART 1 - GENERAL

1.1 RELATED DOCUMENTS

- A. Drawings and general provisions of the Contract, including General and Supplementary Conditions and Division 01 Specification Sections, apply to this Section.

1.2 SUMMARY

- A. Section Includes:
 - 1. Under-building-slab and aboveground domestic water pipes, tubes, and fittings inside buildings.

1.3 ACTION SUBMITTALS

- A. Product Data: For transition fittings and dielectric fittings.

1.4 INFORMATIONAL SUBMITTALS

- A. System purging and disinfecting activities report.

PART 2 - PRODUCTS

2.1 PIPING MATERIALS

- A. Comply with requirements in "Piping Schedule" Article for applications of pipe, tube, fitting materials, and joining methods for specific services, service locations, and pipe sizes.
- B. Potable-water piping and components shall comply with NSF 14 and NSF 61. Plastic piping components shall be marked with "NSF-pw."

2.2 COPPER TUBE AND FITTINGS

- A. Hard Copper Tube: ASTM B 88, Type L water tube, drawn temper.
- B. Cast-Copper, Solder-Joint Fittings: ASME B16.18, pressure fittings.
- C. Wrought-Copper, Solder-Joint Fittings: ASME B16.22, wrought-copper pressure fittings.

- D. Bronze Flanges: ASME B16.24, Class 150, with solder-joint ends.
- E. Copper Unions:
 - 1. MSS SP-123.
 - 2. Cast-copper-alloy, hexagonal-stock body.
 - 3. Ball-and-socket, metal-to-metal seating surfaces.
 - 4. Solder-joint or threaded ends.
- F. Copper Pressure-Seal-Joint Fittings:
 - 1. Manufacturers: Subject to compliance with requirements, provide products by one of the following:
 - a. Elkhart Products Corporation.
 - b. NIBCO Inc.
 - c. Viega.
 - 2. Fittings for NPS 2 and Smaller: Wrought-copper fitting with EPDM-rubber, O-ring seal in each end.
 - 3. Fittings for NPS 2-1/2 to NPS 4: Cast-bronze or wrought-copper fitting with EPDM-rubber, O-ring seal in each end.

2.3 DUCTILE-IRON PIPE AND FITTINGS

- A. Mechanical-Joint, Ductile-Iron Pipe:
 - 1. AWWA C151/A21.51, with mechanical-joint bell and plain spigot end unless grooved or flanged ends are indicated.
 - 2. Glands, Gaskets, and Bolts: AWWA C111/A21.11, ductile- or gray-iron glands, rubber gaskets, and steel bolts.

2.4 PIPING JOINING MATERIALS

- A. Pipe-Flange Gasket Materials:
 - 1. AWWA C110/A21.10, rubber, flat face, 1/8 inch thick or ASME B16.21, nonmetallic and asbestos free unless otherwise indicated.
 - 2. Full-face or ring type unless otherwise indicated.
- B. Metal, Pipe-Flange Bolts and Nuts: ASME B18.2.1, carbon steel unless otherwise indicated.
- C. Flux: ASTM B 813, water flushable.
- D. Brazing Filler Metals: AWS A5.8/A5.8M, BCuP Series, copper-phosphorus alloys for general-duty brazing unless otherwise indicated.

2.5 TRANSITION FITTINGS

A. General Requirements:

1. Same size as pipes to be joined.
2. Pressure rating at least equal to pipes to be joined.
3. End connections compatible with pipes to be joined.

B. Fitting-Type Transition Couplings: Manufactured piping coupling or specified piping system fitting.

C. Sleeve-Type Transition Coupling: AWWA C219.

1. Manufacturers: Subject to compliance with requirements, provide products by one of the following:
 - a. Cascade Waterworks Mfg. Co.
 - b. Dresser, Inc.
 - c. Ford Meter Box Company, Inc. (The).
 - d. Hays Fluid Controls.
 - e. JCM Industries, Inc.
 - f. Smith-Blair, Inc.
 - g. Viking Johnson
2. Description: Metal, bolted, sleeve-type, reducing or transition coupling, with center sleeve, gaskets, end rings, and bolt fasteners and with ends of same sizes as piping to be joined.
 - a. Standard: AWWA C219.
 - b. Center-Sleeve Material: Manufacturer's standard Ductile iron.
 - c. Gasket Material: Natural or synthetic rubber.
 - d. Pressure Rating: 150 psig minimum.
3. Metal Component Finish: Corrosion-resistant coating or material

2.6 DIELECTRIC FITTINGS

A. General Requirements: Assembly of copper alloy and ferrous materials with separating nonconductive insulating material. Include end connections compatible with pipes to be joined.

B. Dielectric Unions:

1. Manufacturers: Subject to compliance with requirements, provide products by one of the following:
 - a. Capitol Manufacturing Company; member of the Phoenix Forge Group.
 - b. Central Plastics Company.

- c. Hart Industries International, Inc.
 - d. Jomar International.
 - e. Matco-Norca.
 - f. McDonald, A. Y. Mfg. Co.
 - g. Watts; a division of Watts Water Technologies, Inc.
 - h. Wilkins; a Zurn company.
2. Standard: ASSE 1079.
 3. Pressure Rating: 125 psig (860 kPa) minimum at 180 deg F (82 deg C).
 4. End Connections: Solder-joint copper alloy and threaded ferrous.
- C. Dielectric Flanges:
1. Manufacturers: Subject to compliance with requirements, provide products by one of the following:
 - a. Capitol Manufacturing Company; member of the Phoenix Forge Group.
 - b. Central Plastics Company.
 - c. Matco-Norca.
 - d. Watts; a division of Watts Water Technologies, Inc.
 - e. Wilkins; a Zurn company.
 2. Standard: ASSE 1079.
 3. Factory-fabricated, bolted, companion-flange assembly.
 4. Pressure Rating: 125 psig (860 kPa) minimum at 180 deg F (82 deg C).
 5. End Connections: Solder-joint copper alloy and threaded ferrous; threaded solder-joint copper alloy and threaded ferrous.
- D. Dielectric-Flange Insulating Kits:
1. Manufacturers: Subject to compliance with requirements, provide products by one of the following:
 - a. Advance Products & Systems, Inc.
 - b. Calpico, Inc.
 - c. Central Plastics Company.
 - d. Pipeline Seal and Insulator, Inc.
 2. Nonconducting materials for field assembly of companion flanges.
 3. Pressure Rating: 150 psig (1035 kPa).
 4. Gasket: Neoprene or phenolic.
 5. Bolt Sleeves: Phenolic or polyethylene.
 6. Washers: Phenolic with steel backing washers.
- E. Dielectric Nipples:
1. Manufacturers: Subject to compliance with requirements, provide products by one of the following:

- a. Elster Perfection Corporation.
 - b. Grinnell Mechanical Products; Tyco Fire Products LP.
 - c. Matco-Norca.
 - d. Precision Plumbing Products, Inc.
 - e. Victaulic Company.
2. Standard: IAPMO PS 66.
 3. Electroplated steel nipple complying with ASTM F 1545.
 4. Pressure Rating and Temperature: 300 psig (2070 kPa) at 225 deg F (107 deg C).
 5. End Connections: Male threaded or grooved.
 6. Lining: Inert and noncorrosive, propylene.

2.7 DIELECTRIC FITTINGS

- A. General Requirements: Assembly of copper alloy and ferrous materials with separating nonconductive insulating material. Include end connections compatible with pipes to be joined.
- B. Manufacturers: Subject to compliance with requirements, provide products by one of the following:
 1. Capitol Manufacturing Company; member of the Phoenix Forge Group.
 2. Matco-Norca.
 3. McDonald, A. Y. Mfg. Co.
 4. Wilkins; a Zurn company.
- C. Dielectric Unions:
 1. Standard: ASSE 1079.
 2. Pressure Rating: 125 psig minimum at 180 deg F.
 3. End Connections: Solder-joint copper alloy and threaded ferrous.
- D. Dielectric Flanges:
 1. Standard: ASSE 1079.
 2. Factory-fabricated, bolted, companion-flange assembly.
 3. Pressure Rating: 125 psig minimum at 180 deg F.
 4. End Connections: Solder-joint copper alloy and threaded ferrous; threaded solder-joint copper alloy and threaded ferrous.
- E. Dielectric-Flange Insulating Kits:
 1. Nonconducting materials for field assembly of companion flanges.
 2. Pressure Rating: 150 psig.
 3. Gasket: Neoprene or phenolic.
 4. Bolt Sleeves: Phenolic or polyethylene.
 5. Washers: Phenolic with steel backing washers.

F. Dielectric Nipples:

1. Standard: IAPMO PS 66.
2. Electroplated steel nipple complying with ASTM F 1545.
3. Pressure Rating and Temperature: 300 psig at 225 deg F.
4. End Connections: Male threaded or grooved.
5. Lining: Inert and noncorrosive, propylene.

PART 3 - EXECUTION

3.1 EARTHWORK

- A. Not Applicable

3.2 PIPING INSTALLATION

- A. Drawing plans, schematics, and diagrams indicate general location and arrangement of domestic water piping. Indicated locations and arrangements are used to size pipe and calculate friction loss, expansion, and other design considerations. Install piping as indicated unless deviations to layout are approved on coordination drawings.
- B. Install copper tubing under building slab according to CDA's "Copper Tube Handbook."
- C. Install shutoff valve, hose-end drain valve, strainer, pressure gage, and test tee with valve inside the building at each domestic water-service entrance. Comply with requirements for pressure gages in Section 220519 "Meters and Gages for Plumbing Piping" and with requirements for drain valves and strainers in Section 221119 "Domestic Water Piping Specialties."
- D. Install shutoff valve immediately upstream of each dielectric fitting.
- E. Install domestic water piping level without pitch and plumb.
- F. Rough-in domestic water piping for water-meter installation according to utility company's requirements.
- G. Install piping concealed from view and protected from physical contact by building occupants unless otherwise indicated and except in equipment rooms and service areas.
- H. Install piping indicated to be exposed and piping in equipment rooms and service areas at right angles or parallel to building walls. Diagonal runs are prohibited unless specifically indicated otherwise.
- I. Install piping above accessible ceilings to allow sufficient space for ceiling panel removal, and coordinate with other services occupying that space.

- J. Install piping to permit valve servicing.
- K. Install nipples, unions, special fittings, and valves with pressure ratings the same as or higher than the system pressure rating used in applications below unless otherwise indicated.
- L. Install piping free of sags and bends.
- M. Install fittings for changes in direction and branch connections.
- N. Install unions in copper tubing at final connection to each piece of equipment, machine, and specialty.
- O. Install pressure gages on suction and discharge piping for each plumbing pump and packaged booster pump. Comply with requirements for pressure gages in Section 220519 "Meters and Gages for Plumbing Piping."
- P. Install thermometers on inlet and outlet piping from each water heater. Comply with requirements for thermometers in Section 220519 "Meters and Gages for Plumbing Piping."
- Q. Install sleeves for piping penetrations of walls, ceilings, and floors. Comply with requirements for sleeves specified in Section 220517 "Sleeves and Sleeve Seals for Plumbing Piping."
- R. Install sleeve seals for piping penetrations of concrete walls and slabs. Comply with requirements for sleeve seals specified in Section 220517 "Sleeves and Sleeve Seals for Plumbing Piping."
- S. Install escutcheons for piping penetrations of walls, ceilings, and floors. Comply with requirements for escutcheons specified in Section 220518 "Escutcheons for Plumbing Piping."

3.3 JOINT CONSTRUCTION

- A. Ream ends of pipes and tubes and remove burrs. Bevel plain ends of steel pipe.
- B. Remove scale, slag, dirt, and debris from inside and outside of pipes, tubes, and fittings before assembly.
- C. Threaded Joints: Thread pipe with tapered pipe threads according to ASME B1.20.1. Cut threads full and clean using sharp dies. Ream threaded pipe ends to remove burrs and restore full ID. Join pipe fittings and valves as follows:
 - 1. Apply appropriate tape or thread compound to external pipe threads.
 - 2. Damaged Threads: Do not use pipe or pipe fittings with threads that are corroded or damaged.
- D. Brazed Joints for Copper Tubing: Comply with CDA's "Copper Tube Handbook," "Brazed Joints" chapter.

- E. Soldered Joints for Copper Tubing: Apply ASTM B 813, water-flushable flux to end of tube. Join copper tube and fittings according to ASTM B 828 or CDA's "Copper Tube Handbook."
- F. Pressure-Sealed Joints for Copper Tubing: Join copper tube and pressure-seal fittings with tools recommended by fitting manufacturer.
- G. Ductile-Iron Piping, Grooved Joints: Cut-groove pipe. Assemble joints with grooved-end, ductile-iron-piping couplings, gaskets, lubricant, and bolts according to coupling manufacturer's written instructions.
- H. Flanged Joints: Select appropriate asbestos-free, nonmetallic gasket material in size, type, and thickness suitable for domestic water service. Join flanges with gasket and bolts according to ASME B31.9.
- I. Joints for Dissimilar-Material Piping: Make joints using adapters compatible with materials of both piping systems.

3.4 TRANSITION FITTING INSTALLATION

- A. Install transition couplings at joints of dissimilar piping.

3.5 DIELECTRIC FITTING INSTALLATION

- A. Install dielectric fittings in piping at connections of dissimilar metal piping and tubing.
- B. Dielectric Fittings for NPS 2 and Smaller: Use dielectric couplings or nipples or unions.
- C. Dielectric Fittings for NPS 2-1/2 to NPS 4: Use dielectric flange kits.

3.6 HANGER AND SUPPORT INSTALLATION

- A. Comply with requirements for pipe hanger, support products, and installation in Section 220529 "Hangers and Supports for Plumbing Piping and Equipment."
 - 1. Vertical Piping: MSS Type 8 or 42, clamps.
 - 2. Individual, Straight, Horizontal Piping Runs:
 - a. 100 Feet and Less: MSS Type 1, adjustable, steel clevis hangers.
 - b. Longer Than 100 Feet: MSS Type 43, adjustable roller hangers.
 - c. Longer Than 100 Feet if Indicated: MSS Type 49, spring cushion rolls.
 - 3. Multiple, Straight, Horizontal Piping Runs 100 Feet or Longer: MSS Type 44, pipe rolls. Support pipe rolls on trapeze.
 - 4. Base of Vertical Piping: MSS Type 52, spring hangers.
- B. Support vertical piping and tubing at base and at each floor.

- C. Rod diameter may be reduced one size for double-rod hangers, to a minimum of 3/8 inch.
- D. Install hangers for copper tubing with the following maximum horizontal spacing and minimum rod diameters:
 - 1. NPS 3/4 and Smaller: 60 inches with 3/8-inch rod.
 - 2. NPS 1 and NPS 1-1/4: 72 inches with 3/8-inch rod.
 - 3. NPS 1-1/2 and NPS 2: 96 inches with 3/8-inch rod.
 - 4. NPS 2-1/2: 108 inches with 1/2-inch rod.
 - 5. NPS 3 to NPS 5: 10 feet with 1/2-inch rod.
- E. Install supports for vertical copper tubing every 10 feet.
- F. Install hangers for steel piping with the following maximum horizontal spacing and minimum rod diameters:
 - 1. NPS 1-1/4 and Smaller: 84 inches with 3/8-inch rod.
 - 2. NPS 1-1/2: 108 inches with 3/8-inch rod.
 - 3. NPS 2: 10 feet with 3/8-inch rod.
 - 4. NPS 2-1/2: 11 feet with 1/2-inch rod.
 - 5. NPS 3 and NPS 3-1/2: 12 feet with 1/2-inch rod.
 - 6. NPS 4 and NPS 5: 12 feet with 5/8-inch rod.
 - 7. NPS 6: 12 feet with 3/4-inch rod.
 - 8. NPS 8 to NPS 12: 12 feet with 7/8-inch rod.
- G. Install supports for vertical steel piping every 15 feet.
- H. Support piping and tubing not listed in this article according to MSS SP-69 and manufacturer's written instructions.

3.7 CONNECTIONS

- A. Drawings indicate general arrangement of piping, fittings, and specialties.
- B. When installing piping adjacent to equipment and machines, allow space for service and maintenance.
- C. Connect domestic water piping to exterior water-service piping. Use transition fitting to join dissimilar piping materials.
- D. Connect domestic water piping to water-service piping with shutoff valve; extend and connect to the following:
 - 1. Domestic Water Booster Pumps: Cold-water suction and discharge piping.
 - 2. Water Heaters: Cold-water inlet and hot-water outlet piping in sizes indicated, but not smaller than sizes of water heater connections.
 - 3. Plumbing Fixtures: Cold- and hot-water-supply piping in sizes indicated, but not smaller than that required by plumbing code.

4. Equipment: Cold- and hot-water-supply piping as indicated, but not smaller than equipment connections. Provide shutoff valve and union for each connection. Use flanges instead of unions for NPS 2-1/2 and larger.

3.8 IDENTIFICATION

- A. Identify system components. Comply with requirements for identification materials and installation in Section 220553 "Identification for Plumbing Piping and Equipment."
- B. Label pressure piping with system operating pressure.

3.9 ADJUSTING

- A. Perform the following adjustments before operation:
 1. Close drain valves, hydrants, and hose bibbs.
 2. Open shutoff valves to fully open position.
 3. Open throttling valves to proper setting.
 4. Adjust balancing valves in hot-water-circulation return piping to provide adequate flow.
 - a. Manually adjust ball-type balancing valves in hot-water-circulation return piping to provide hot-water flow in each branch.
 - b. Adjust calibrated balancing valves to flows indicated.
 5. Remove plugs used during testing of piping and for temporary sealing of piping during installation.
 6. Remove and clean strainer screens. Close drain valves and replace drain plugs.
 7. Remove filter cartridges from housings and verify that cartridges are as specified for application where used and are clean and ready for use.
 8. Check plumbing specialties and verify proper settings, adjustments, and operation.

3.10 CLEANING

- A. Clean and disinfect potable domestic water piping as follows:
 1. Purge new piping and parts of existing piping that have been altered, extended, or repaired before using.
 2. Use purging and disinfecting procedures prescribed by authorities having jurisdiction; if methods are not prescribed, use procedures described in either AWWA C651 or AWWA C652 or follow procedures described below:
 - a. Flush piping system with clean, potable water until dirty water does not appear at outlets.
 - b. Fill and isolate system according to either of the following:

- 1) Fill system or part thereof with water/chlorine solution with at least 50 ppm of chlorine. Isolate with valves and allow to stand for 24 hours.
 - 2) Fill system or part thereof with water/chlorine solution with at least 200 ppm of chlorine. Isolate and allow to stand for three hours.
- c. Flush system with clean, potable water until no chlorine is in water coming from system after the standing time.
 - d. Repeat procedures if biological examination shows contamination.
 - e. Submit water samples in sterile bottles to authorities having jurisdiction.
- B. Prepare and submit reports of purging and disinfecting activities. Include copies of water-sample approvals from authorities having jurisdiction.
- C. Clean interior of domestic water piping system. Remove dirt and debris as work progresses.

3.11 PIPING SCHEDULE

- A. Transition and special fittings with pressure ratings at least equal to piping rating may be used in applications below unless otherwise indicated.
- B. Flanges and unions may be used for aboveground piping joints unless otherwise indicated.
- C. Aboveground domestic water piping, NPS 3 and smaller, shall be one of the following:
1. Hard copper tube, ASTM B 88, Type L; cast- or wrought-copper, solder-joint fittings; and brazed joints.
 2. Hard copper tube, ASTM B 88, Type L; copper pressure-seal-joint fittings; and pressure-sealed joints.
- D. Aboveground domestic water piping, NPS 4 to NPS 8, shall be the following:
1. Ductile-iron, grooved-end pipe; ductile-iron, grooved-end appurtenances; and grooved joints.

3.12 VALVE SCHEDULE

- A. Drawings indicate valve types to be used. Where specific valve types are not indicated, the following requirements apply:
1. Shutoff Duty: Use ball or gate valves for piping NPS 2 and smaller. Use butterfly, ball, or gate valves with flanged ends for piping NPS 2-1/2 and larger.
 2. Throttling Duty: Use ball or globe valves for piping NPS 2 and smaller. Use butterfly or ball valves with flanged ends for piping NPS 2-1/2 and larger.
 3. Hot-Water Circulation Piping, Balancing Duty: Calibrated balancing valves.
 4. Drain Duty: Hose-end drain valves.
- B. Use check valves to maintain correct direction of domestic water flow to and from equipment.

END OF SECTION 221116

SECTION 221119 - DOMESTIC WATER PIPING SPECIALTIES

PART 1 - GENERAL

1.1 RELATED DOCUMENTS

- A. Drawings and general provisions of the Contract, including General and Supplementary Conditions and Division 01 Specification Sections, apply to this Section.

1.2 SUMMARY

- A. Section Includes:
 - 1. Vacuum breakers.
 - 2. Backflow preventers.
 - 3. Balancing valves.
 - 4. Temperature-actuated, water mixing valves.
 - 5. Strainers.
 - 6. Drain valves.
 - 7. Water-hammer arresters.
 - 8. Air vents.
 - 9. Flexible connectors.

1.3 ACTION SUBMITTALS

- A. Product Data: For each type of product.
- B. Shop Drawings: For domestic water piping specialties.
 - 1. Include diagrams for power, signal, and control wiring.

1.4 INFORMATIONAL SUBMITTALS

- A. Field quality-control reports.

1.5 CLOSEOUT SUBMITTALS

- A. Operation and Maintenance Data: For domestic water piping specialties to include in emergency, operation, and maintenance manuals.

PART 2 - PRODUCTS

2.1 GENERAL REQUIREMENTS FOR PIPING SPECIALTIES

- A. Potable-water piping and components shall comply with NSF 61.

2.2 PERFORMANCE REQUIREMENTS

- A. Minimum Working Pressure for Domestic Water Piping Specialties: 125 psig unless otherwise indicated.

2.3 VACUUM BREAKERS

- A. Hose-Connection Vacuum Breakers:

1. Manufacturers: Subject to compliance with requirements, provide products by one of the following:
2. Standard: ASSE 1011.
3. Body: Bronze, nonremovable, with manual drain.
4. Outlet Connection: Garden-hose threaded complying with ASME B1.20.7.
5. Finish: Chrome or nickel plated.

2.4 BACKFLOW PREVENTERS

- A. Reduced-Pressure-Principle Backflow Preventers:

1. Manufacturers: Subject to compliance with requirements, provide products by one of the following:
 - a. Ames Fire & Waterworks; a division of Watts Water Technologies, Inc.
 - b. Conbraco Industries, Inc.
 - c. FEBCO; a division of Watts Water Technologies, Inc.
 - d. Flomatic Corporation.
 - e. Watts; a division of Watts Water Technologies, Inc.; Watts Regulator Company.
 - f. Zurn Industries, LLC; Plumbing Products Group; Wilkins Water Control Products.
2. Standard: ASSE 1013.
3. Operation: Continuous-pressure applications.
4. Pressure Loss: 12 psig maximum, through middle third of flow range.
5. Size: 3 NPS.
6. Design Flow Rate: 130 gpm.
7. Pressure Loss at Design Flow Rate: 10.5 psig for sizes NPS 3.
8. Body: Bronze for NPS 2 and smaller; cast iron with interior lining that complies with AWWA C550 or that is FDA approved for NPS 2-1/2 and larger.
9. End Connections: Threaded for NPS 2 and smaller; flanged for NPS 2-1/2 and larger.
10. Configuration: Designed for horizontal, straight-through flow.
11. Accessories:

- a. Valves: Quarter-Turn Ball type with threaded ends on inlet and outlet.
- b. Air-Gap Fitting: ASME A112.1.2, matching backflow-preventer connection.

B. Dual-Check-Valve Backflow Preventers:

1. Manufacturers: Subject to compliance with requirements, provide products by one of the following:
 - a. Cash Acme; a division of Reliance Worldwide Corporation.
 - b. Conbraco Industries, Inc.
 - c. FEBCO; a division of Watts Water Technologies, Inc.
 - d. Flomatic Corporation.
 - e. Ford Meter Box Company, Inc. (The).
 - f. Honeywell International Inc.
 - g. Legend Valve.
 - h. McDonald, A. Y. Mfg. Co.
 - i. Mueller Co. Ltd.; a subsidiary of Mueller Water Products Inc.
 - j. Watts; a division of Watts Water Technologies, Inc.; Watts Regulator Company.
 - k. Zurn Industries, LLC; Plumbing Products Group; Wilkins Water Control Products
2. Standard: ASSE 1024.
3. Operation: Continuous-pressure applications.
4. Size: NPS 1/2.
5. Body: Bronze with union inlet.

C. Backflow-Preventer Test Kits:

1. Manufacturers: Subject to compliance with requirements, provide products by one of the following:
 - a. Conbraco Industries, Inc.
 - b. FEBCO; a division of Watts Water Technologies, Inc.
 - c. Flomatic Corporation.
 - d. Watts; a division of Watts Water Technologies, Inc.; Watts Regulator Company.
 - e. Zurn Industries, LLC; Plumbing Products Group; Wilkins Water Control Products
2. Description: Factory calibrated, with gages, fittings, hoses, and carrying case with test-procedure instructions.

2.5 BALANCING VALVES

A. Copper-Alloy Calibrated Balancing Valves:

1. Manufacturers: Subject to compliance with requirements, provide products by one of the following:
 - a. Armstrong International, Inc.
 - b. Flo Fab Inc.

- c. ITT Corporation; Bell & Gossett Div.
 - d. NIBCO Inc.
 - e. TAC.
 - f. TACO Incorporated.
 - g. Watts; a division of Watts Water Technologies, Inc.; Watts Regulator Company.
2. Type: Ball or Y-pattern globe valve with two readout ports and memory-setting indicator.
 3. Body: bronze.
 4. Size: Same as connected piping, but not larger than NPS 2.
 5. Accessories: Meter hoses, fittings, valves, differential pressure meter, and carrying case.

2.6 TEMPERATURE-ACTUATED, WATER MIXING VALVES

A. Primary Water Tempering Valves:

1. Manufacturers: Subject to compliance with requirements, provide products by one of the following:
 - a. Armstrong International, Inc.
 - b. Cash Acme; a division of Reliance Worldwide Corporation.
 - c. Conbraco Industries, Inc.
 - d. Honeywell International Inc.
 - e. Legend Valve.
 - f. Leonard Valve Company.
 - g. Powers; a division of Watts Water Technologies, Inc.
 - h. Symmons Industries, Inc.
 - i. TACO Incorporated.
 - j. Watts; a division of Watts Water Technologies, Inc.; Watts Regulator Company.
 - k. Zurn Industries, LLC; Plumbing Products Group; Wilkins Water Control Products.
2. Standard: ASSE 1017, thermostatically controlled, water tempering valve, listed as tempering valve.
3. Pressure Rating: 125 psig minimum unless otherwise indicated.
4. Body: Bronze.
5. Temperature Control: Manual.
6. Inlets and Outlet: Threaded.
7. Tempered-Water Setting: 120-deg F.
8. Valve Finish: Rough bronze.

2.7 STRAINERS FOR DOMESTIC WATER PIPING

A. Y-Pattern Strainers:

1. Pressure Rating: 125 psig minimum unless otherwise indicated.

2. Body: Bronze for NPS 2 and smaller; cast iron with interior lining that complies with AWWA C550 or that is FDA approved, epoxy coated and for NPS 2-1/2 and larger.
3. End Connections: Threaded for NPS 2 and smaller; flanged for NPS 2-1/2 and larger.
4. Screen: Stainless steel with round perforations unless otherwise indicated.
5. Perforation Size:
 - a. Strainers NPS 2 and Smaller: 0.020 inch.
 - b. Strainers NPS 2-1/2 to NPS 4: 0.045 inch.
6. Drain: Pipe plug.

2.8 DRAIN VALVES

A. Stop-and-Waste Drain Valves:

1. Standard: MSS SP-110 for ball valves or MSS SP-80 for gate valves.
2. Pressure Rating: 200-psig minimum CWP or Class 125.
3. Size: NPS 3/4.
4. Body: Copper alloy or ASTM B 62 bronze.
5. Drain: NPS 1/8 side outlet with cap.

2.9 WATER-HAMMER ARRESTERS

A. Water-Hammer Arresters:

1. Manufacturers: Subject to compliance with requirements, provide products by one of the following:
 - a. AMTROL, Inc.
 - b. Josam Company.
 - c. MIFAB, Inc.
 - d. Precision Plumbing Products, Inc.
 - e. Sioux Chief Manufacturing Company, Inc.
 - f. Smith, Jay R. Mfg. Co.; Division of Smith Industries, Inc.
 - g. Tyler Pipe; Wade Div.
 - h. Watts Drainage Products.
 - i. Zurn Industries, LLC; Plumbing Products Group; Specification Drainage Products.
2. Standard: ASSE 1010 or PDI-WH 201.
3. Type: Metal bellows.
4. Size: ASSE 1010, Sizes AA and A through F, or PDI-WH 201, Sizes A through F.

2.10 AIR VENTS

A. Bolted-Construction Automatic Air Vents:

1. Body: Bronze.
2. Pressure Rating and Temperature: 125-psig minimum pressure rating at 140 deg F.
3. Float: Replaceable, corrosion-resistant metal.
4. Mechanism and Seat: Stainless steel.
5. Size: NPS 3/8 minimum inlet.
6. Inlet and Vent Outlet End Connections: Threaded.

2.11 FLEXIBLE CONNECTORS

- A. Manufacturers: Subject to compliance with requirements, provide products by one of the following:
1. Flex-Hose Co., Inc.
 2. Flexicraft Industries.
 3. Flex Pression, Ltd.
 4. Flex-Weld Incorporated.
 5. Hyspan Precision Products, Inc.
 6. Mercer Gasket & Shim, Inc.
 7. Metraflex, Inc.
 8. Proco Products, Inc.
 9. TOZEN Corporation.
 10. Unaflex.Universal Metal Hose; a Hyspan company.
- B. Bronze-Hose Flexible Connectors: Corrugated-bronze tubing with bronze wire-braid covering and ends brazed to inner tubing.
1. Working-Pressure Rating: Minimum 200 psig.
 2. End Connections NPS 2 and Smaller: Threaded copper pipe or plain-end copper tube.
 3. End Connections NPS 2-1/2 and Larger: Flanged copper alloy.
- C. Stainless-Steel-Hose Flexible Connectors: Corrugated-stainless-steel tubing with stainless-steel wire-braid covering and ends welded to inner tubing.
1. Working-Pressure Rating: Minimum 200 psig.
 2. End Connections NPS 2 and Smaller: Threaded steel-pipe nipple.
 3. End Connections NPS 2-1/2 and Larger: Flanged steel nipple.

PART 3 - EXECUTION

3.1 INSTALLATION

- A. Install backflow preventers in each water supply to mechanical equipment and systems and to other equipment and water systems that may be sources of contamination. Comply with authorities having jurisdiction.
1. Locate backflow preventers in same room as connected equipment or system.

2. Install drain for backflow preventers with atmospheric-vent drain connection with air-gap fitting, fixed air-gap fitting, or equivalent positive pipe separation of at least two pipe diameters in drain piping and pipe-to-floor drain. Locate air-gap device attached to or under backflow preventer. Simple air breaks are unacceptable for this application.
 3. Do not install bypass piping around backflow preventers.
- B. Install water regulators with inlet and outlet shutoff valves. Install pressure gages on inlet and outlet.
- C. Install water-control valves with inlet and outlet shutoff valves and bypass with globe valve. Install pressure gages on inlet and outlet.
- D. Install balancing valves in locations where they can easily be adjusted.
- E. Install temperature-actuated, water mixing valves with check stops or shutoff valves on inlets and with shutoff valve on outlet.
1. Install cabinet-type units recessed in or surface mounted on wall as specified.
- F. Install Y-pattern strainers for water on supply side of each solenoid valve and pump.
- G. Install water-hammer arresters in water piping according to PDI-WH 201.
- H. Install air vents at high points of water piping. Install drain piping and discharge onto floor drain.

3.2 CONNECTIONS

- A. Comply with requirements for ground equipment in Section 260526 "Grounding and Bonding for Electrical Systems."
- B. Fire-retardant-treated-wood blocking is specified in Section 260519 "Low-Voltage Electrical Power Conductors and Cables" for electrical connections.

3.3 LABELING AND IDENTIFYING

- A. Equipment Nameplates and Signs: Install engraved plastic-laminate equipment nameplate or sign on or near each of the following:
1. Reduced-pressure-principle backflow preventers.
 2. Dual-check-valve backflow preventers.
 3. Calibrated balancing valves.
- B. Distinguish among multiple units, inform operator of operational requirements, indicate safety and emergency precautions, and warn of hazards and improper operations, in addition to identifying unit. Nameplates and signs are specified in Section 220553 "Identification for Plumbing Piping and Equipment."

3.4 FIELD QUALITY CONTROL

- A. Perform the following tests and inspections:
 - 1. Test each reduced-pressure-principle backflow preventer according to authorities having jurisdiction and the device's reference standard.
- B. Domestic water piping specialties will be considered defective if they do not pass tests and inspections.
- C. Prepare test and inspection reports.

3.5 ADJUSTING

- A. Set field-adjustable flow set points of balancing valves.
- B. Set field-adjustable temperature set points of temperature-actuated, water mixing valves.

END OF SECTION 221119

SECTION 221316 - SANITARY WASTE AND VENT PIPING

PART 1 - GENERAL

1.1 RELATED DOCUMENTS

- A. Drawings and general provisions of the Contract, including General and Supplementary Conditions and Division 01 Specification Sections, apply to this Section.

1.2 SUMMARY

- A. Section Includes:

- 1. Pipe, tube, and fittings.

- B. Related Sections:

- 1. Section 221329 "Sanitary Sewerage Pumps" for effluent and sewage pumps.

1.3 PERFORMANCE REQUIREMENTS

- A. Components and installation shall be capable of withstanding the following minimum working pressure unless otherwise indicated:

- 1. Soil, Waste, and Vent Piping: 10-foot head of water.

1.4 ACTION SUBMITTALS

- A. Product Data: For each type of product indicated.

1.5 QUALITY ASSURANCE

- A. Piping materials shall bear label, stamp, or other markings of specified testing agency.

- B. Comply with NSF/ANSI 14, "Plastics Piping Systems Components and Related Materials," for plastic piping components. Include marking with "NSF-dwv" for plastic drain, waste, and vent piping and "NSF-sewer" for plastic sewer piping.

PART 2 - PRODUCTS

2.1 PIPING MATERIALS

- A. Comply with requirements in "Piping Schedule" Article for applications of pipe, tube, fitting materials, and joining methods for specific services, service locations, and pipe sizes.

2.2 HUB-AND-SPIGOT, CAST-IRON SOIL PIPE AND FITTINGS

- A. Pipe and Fittings: ASTM A 74, Service class(es).
- B. Gaskets: ASTM C 564, rubber.
- C. Calking Materials: ASTM B 29, pure lead and oakum or hemp fiber.

2.3 HUBLESS, CAST-IRON SOIL PIPE AND FITTINGS

- A. Pipe and Fittings: ASTM A 888 or CISPI 301.

2.4 COPPER TUBE AND FITTINGS

- A. Copper DWV Tube: ASTM B 306, drainage tube, drawn temper.
- B. Copper Drainage Fittings: ASME B16.23, cast copper or ASME B16.29, wrought copper, solder-joint fittings.
- C. Solder: ASTM B 32, lead-free with ASTM B 813, water-flushable flux.

2.5 PVC PIPE AND FITTINGS

- A. Solid-Wall PVC Pipe: ASTM D 2665, drain, waste, and vent.
- B. PVC Socket Fittings: ASTM D 2665, made to ASTM D 3311, drain, waste, and vent patterns and to fit Schedule 40 pipe.
- C. Adhesive Primer: ASTM F 656.
 - 1. Adhesive primer shall have a VOC content of 550 g/L or less when calculated according to 40 CFR 59, Subpart D (EPA Method 24).
- D. Solvent Cement: ASTM D 2564.
 - 1. PVC solvent cement shall have a VOC content of 510 g/L or less when calculated according to 40 CFR 59, Subpart D (EPA Method 24).

PART 3 - EXECUTION

3.1 PIPING INSTALLATION

- A. Drawing plans, schematics, and diagrams indicate general location and arrangement of piping systems. Indicated locations and arrangements were used to size pipe and calculate friction loss, expansion, pump sizing, and other design considerations. Install piping as indicated unless deviations to layout are approved on coordination drawings.
- B. Install piping in concealed locations unless otherwise indicated and except in equipment rooms and service areas.
- C. Install piping indicated to be exposed and piping in equipment rooms and service areas at right angles or parallel to building walls. Diagonal runs are prohibited unless specifically indicated otherwise.
- D. Install piping above accessible ceilings to allow sufficient space for ceiling panel removal.
- E. Install piping at indicated slopes.
- F. Install piping free of sags and bends.
- G. Install fittings for changes in direction and branch connections.
- H. Install piping to allow application of insulation.
- I. Make changes in direction for soil and waste drainage and vent piping using appropriate branches, bends, and long-sweep bends. Sanitary tees and short-sweep 1/4 bends may be used on vertical stacks if change in direction of flow is from horizontal to vertical. Use long-turn, double Y-branch and 1/8-bend fittings if two fixtures are installed back to back or side by side with common drain pipe. Straight tees, elbows, and crosses may be used on vent lines. Do not change direction of flow more than 90 degrees. Use proper size of standard increasers and reducers if pipes of different sizes are connected. Reducing size of drainage piping in direction of flow is prohibited.
- J. Lay buried building drainage piping beginning at low point of each system. Install true to grades and alignment indicated, with unbroken continuity of invert. Place hub ends of piping upstream. Install required gaskets according to manufacturer's written instructions for use of lubricants, cements, and other installation requirements. Maintain swab in piping and pull past each joint as completed.
- K. Install soil and waste drainage and vent piping at the following minimum slopes unless otherwise indicated:
 - 1. Building Sanitary Drain: 2 percent downward in direction of flow for piping NPS 3 and smaller; 2 percent downward in direction of flow for piping NPS 4 and larger.
 - 2. Horizontal Sanitary Drainage Piping: 1 percent downward in direction of flow.

3. Vent Piping: 1 percent down toward vertical fixture vent or toward vent stack.
 - L. Install cast-iron soil piping according to CISPI's "Cast Iron Soil Pipe and Fittings Handbook," Chapter IV, "Installation of Cast Iron Soil Pipe and Fittings."
 - M. Install aboveground copper tubing according to CDA's "Copper Tube Handbook."
 - N. Install underground PVC piping according to ASTM D 2321.
 - O. Install engineered soil and waste drainage and vent piping systems as follows:
 1. Combination Waste and Vent: Comply with standards of authorities having jurisdiction.
 2. Reduced-Size Venting: Comply with standards of authorities having jurisdiction.
 - P. Do not enclose, cover, or put piping into operation until it is inspected and approved by authorities having jurisdiction.
 - Q. Install sleeves for piping penetrations of walls, ceilings, and floors. Comply with requirements for sleeves specified in Section 220517 "Sleeves and Sleeve Seals for Plumbing Piping."
 - R. Install sleeve seals for piping penetrations of concrete walls and slabs. Comply with requirements for sleeve seals specified in Section 220517 "Sleeves and Sleeve Seals for Plumbing Piping."
 - S. Install escutcheons for piping penetrations of walls, ceilings, and floors. Comply with requirements for escutcheons specified in Section 220518 "Escutcheons for Plumbing Piping."
- 3.2 JOINT CONSTRUCTION
- A. Join hub-and-spigot, cast-iron soil piping with gasket joints according to CISPI's "Cast Iron Soil Pipe and Fittings Handbook" for compression joints.
 - B. Join hubless, cast-iron soil piping according to CISPI 310 and CISPI's "Cast Iron Soil Pipe and Fittings Handbook" for hubless-piping coupling joints.
 - C. Join copper tube and fittings with soldered joints according to ASTM B 828. Use ASTM B 813, water-flushable, lead-free flux and ASTM B 32, lead-free-alloy solder.
 - D. Plastic, Nonpressure-Piping, Solvent-Cement Joints: Clean and dry joining surfaces. Join pipe and fittings according to the following:
 1. Comply with ASTM F 402 for safe-handling practice of cleaners, primers, and solvent cements.
 2. PVC Piping: Join according to ASTM D 2855 and ASTM D 2665 Appendixes.

3.3 SPECIALTY PIPE FITTING INSTALLATION

A. Dielectric Fittings:

1. Install dielectric fittings in piping at connections of dissimilar metal piping and tubing.
2. Dielectric Fittings for NPS 2 and Smaller: Use dielectric
3. Dielectric Fittings for NPS 2-1/2 to NPS 4: Use dielectric

3.4 HANGER AND SUPPORT INSTALLATION

A. Comply with requirements for pipe hanger and support devices and installation specified in Section 220529 "Hangers and Supports for Plumbing Piping and Equipment."

1. Install carbon-steel pipe hangers for horizontal piping in noncorrosive environments.
2. Install carbon-steel pipe support clamps for vertical piping in noncorrosive environments.
3. Vertical Piping: MSS Type 8 or Type 42, clamps.
4. Install individual, straight, horizontal piping runs:
 - a. 100 Feet and Less: MSS Type 1, adjustable, steel clevis hangers.
 - b. Longer Than 100 Feet: MSS Type 43, adjustable roller hangers.
 - c. Longer Than 100 Feet if Indicated: MSS Type 49, spring cushion rolls.
5. Multiple, Straight, Horizontal Piping Runs 100 Feet or Longer: MSS Type 44, pipe rolls. Support pipe rolls on trapeze.
6. Base of Vertical Piping: MSS Type 52, spring hangers.

B. Support horizontal piping and tubing within 12 inches of each fitting and coupling.

C. Support vertical piping and tubing at base and at each floor.

D. Rod diameter may be reduced one size for double-rod hangers, with 3/8-inch minimum rods.

E. Install hangers for cast-iron soil piping with the following maximum horizontal spacing and minimum rod diameters:

1. NPS 1-1/2 and NPS 2: 60 inches with 3/8-inch rod.
2. NPS 3: 60 inches with 1/2-inch rod.
3. NPS 4 and NPS 5: 60 inches with 5/8-inch rod.
4. NPS 6 and NPS 8: 60 inches with 3/4-inch rod.
5. NPS 10 and NPS 12: 60 inches with 7/8-inch rod.
6. Spacing for 10-foot lengths may be increased to 10 feet. Spacing for fittings is limited to 60 inches.

F. Install supports for vertical cast-iron soil piping every 15 feet.

- G. Install hangers for copper tubing with the following maximum horizontal spacing and minimum rod diameters:
 - 1. NPS 1-1/4: 72 inches with 3/8-inch rod.
 - 2. NPS 1-1/2 and NPS 2: 96 inches with 3/8-inch rod.
 - 3. NPS 2-1/2: 108 inches with 1/2-inch rod.
 - 4. NPS 3 and NPS 5: 10 feet with 1/2-inch rod.
 - 5. NPS 6: 10 feet with 5/8-inch rod.
 - 6. NPS 8: 10 feet with 3/4-inch rod.
- H. Install supports for vertical copper tubing every 10 feet.
- I. Install hangers for PVC piping with the following maximum horizontal spacing and minimum rod diameters:
 - 1. NPS 1-1/2 and NPS 2: 48 inches with 3/8-inch rod.
 - 2. NPS 3: 48 inches with 1/2-inch rod.
 - 3. NPS 4 and NPS 5: 48 inches with 5/8-inch rod.
 - 4. NPS 6 and NPS 8: 48 inches with 3/4-inch rod.
 - 5. NPS 10 and NPS 12: 48 inches with 7/8-inch rod.
- J. Install supports for vertical PVC piping every 48 inches.
- K. Support piping and tubing not listed above according to MSS SP-69 and manufacturer's written instructions.

3.5 CONNECTIONS

- A. Drawings indicate general arrangement of piping, fittings, and specialties.
- B. Connect soil and waste piping to exterior sanitary sewerage piping. Use transition fitting to join dissimilar piping materials.
- C. Connect drainage and vent piping to the following:
 - 1. Plumbing Fixtures: Connect drainage piping in sizes indicated, but not smaller than required by plumbing code.
 - 2. Plumbing Fixtures and Equipment: Connect atmospheric vent piping in sizes indicated, but not smaller than required by authorities having jurisdiction.
 - 3. Plumbing Specialties: Connect drainage and vent piping in sizes indicated, but not smaller than required by plumbing code.
 - 4. Install test tees (wall cleanouts) in conductors near floor and floor cleanouts with cover flush with floor.
 - 5. Comply with requirements for, cleanouts, and drains specified in Section 221319 "Sanitary Waste Piping Specialties."

6. Equipment: Connect drainage piping as indicated. Provide shutoff valve if indicated and union for each connection. Use flanges instead of unions for connections NPS 2-1/2 and larger.

D. Connect force-main piping to the following:

1. Sewage Pump: To sewage pump discharge.

E. Where installing piping adjacent to equipment, allow space for service and maintenance of equipment.

3.6 IDENTIFICATION

A. Identify exposed sanitary waste and vent piping. Comply with requirements for identification specified in Section 220553 "Identification for Plumbing Piping and Equipment."

3.7 PIPING SCHEDULE

A. Aboveground, soil and waste piping NPS 4 and smaller shall be any of the following:

1. Hubless, cast-iron soil pipe and fittings; CISPI hubless-piping couplings; and coupled joints.
2. Copper DWV tube, copper drainage fittings, and soldered joints.

B. Aboveground, vent piping NPS 4 and smaller shall be any of the following:

1. Hubless, cast-iron soil pipe and fittings; CISPI hubless-piping couplings; and coupled joints.

C. Underground, soil, waste, and vent piping NPS 4 and smaller shall be any of the following:

1. Service class, cast-iron soil piping; gaskets; and gasketed joints.
2. Solid wall PVC pipe, PVC socket fittings, and solvent-cemented joints.

D. Underground, soil and waste piping NPS 5 and larger shall be any of the following:

1. Service class, cast-iron soil piping; gaskets; and gasketed joints.
2. Solid-wall PVC pipe; PVC socket fittings; and solvent-cemented joints.

END OF SECTION 221316

SECTION 221319 - SANITARY WASTE PIPING SPECIALTIES

PART 1 - GENERAL

1.1 RELATED DOCUMENTS

- A. Drawings and general provisions of the Contract, including General and Supplementary Conditions and Division 01 Specification Sections, apply to this Section.

1.2 SUMMARY

- A. Section Includes:
 - 1. Backwater valves.
 - 2. Cleanouts.
 - 3. Floor drains.
 - 4. Air-admittance valves.
 - 5. Roof flashing assemblies.
 - 6. Through-penetration firestop assemblies.
 - 7. Miscellaneous sanitary drainage piping specialties.
 - 8. Flashing materials.

1.3 DEFINITIONS

- A. ABS: Acrylonitrile-butadiene-styrene plastic.
- B. FOG: Fats, oils, and greases.
- C. FRP: Fiberglass-reinforced plastic.
- D. HDPE: High-density polyethylene plastic.
- E. PE: Polyethylene plastic.
- F. PP: Polypropylene plastic.
- G. PVC: Polyvinyl chloride plastic.

1.4 ACTION SUBMITTALS

- A. Shop Drawings: Show fabrication and installation details for frost-resistant vent terminals.

1.5 CLOSEOUT SUBMITTALS

- A. Operation and Maintenance Data: For drainage piping specialties to include in emergency, operation, and maintenance manuals.

1.6 QUALITY ASSURANCE

- A. Drainage piping specialties shall bear label, stamp, or other markings of specified testing agency.
- B. Electrical Components, Devices, and Accessories: Listed and labeled as defined in NFPA 70, Article 100, by a testing agency acceptable to authorities having jurisdiction, and marked for intended use.
- C. Comply with NSF 14, "Plastics Piping Components and Related Materials," for plastic sanitary piping specialty components.

1.7 COORDINATION

- A. Coordinate size and location of roof penetrations.

PART 2 - PRODUCTS

2.1 BACKWATER VALVES

- A. Horizontal, Cast-Iron Backwater Valves:
 - 1. Manufacturers: Subject to compliance with requirements, provide products by one of the following:
 - a. Josam Company; Josam Div.
 - b. MIFAB, Inc.
 - c. Smith, Jay R. Mfr. Co.; Division of Smith Industries, Inc.
 - d. Tyler Pipe; Wade Div.
 - e. Watts Drainage Products Inc.
 - f. Zurn Plumbing Products Group; Specification Drainage Operation.
 - 2. Standard: ASME A112.14.1.
 - 3. Size: Same as connected piping.
 - 4. Body: Cast iron.
 - 5. Cover: Cast iron with bolted or threaded access check valve.
 - 6. End Connections: Hub and spigot or hubless.
 - 7. Type Check Valve: Removable, bronze, swing check, factory assembled or field modified to hang open for airflow unless subject to backflow condition.

8. Extension: ASTM A 74, Service class; full-size, cast-iron, soil-pipe extension to field-installed cleanout at floor; replaces backwater valve cover.

B. Drain-Outlet Backwater Valves:

1. Manufacturers: Subject to compliance with requirements, provide products by one of the following:
 - a. Josam Company; Josam Div.
 - b. Smith, Jay R. Mfr. Co.; Division of Smith Industries, Inc.
 - c. Watts Drainage Products Inc.
 - d. Zurn Plumbing Products Group; Specification Drainage Operation.
2. Size: Same as floor drain outlet.
3. Body: Cast iron or bronze made for vertical installation in bottom outlet of floor drain.
4. Check Valve: Removable ball float.
5. Inlet: Threaded.
6. Outlet: Threaded or spigot.

2.2 CLEANOUTS

A. Exposed Metal Cleanouts:

1. ASME A112.36.2M, Cast-Iron Cleanouts:
 - a. Manufacturers: Subject to compliance with requirements, provide products by one of the following:
 - 1) Josam Company.
 - 2) MIFAB, Inc.
 - 3) Smith, Jay R. Mfg. Co.
 - 4) Tyler Pipe.
 - 5) Watts Drainage Products.
 - 6) Zurn Plumbing Products Group.
 2. Standard: ASME A112.36.2M for cast iron for cleanout test tee.
 3. Size: Same as connected drainage piping
 4. Body Material: Hubless, cast-iron soil pipe test tee as required to match connected piping.
 5. Closure: Countersunk or raised-head, brass plug.
 6. Closure Plug Size: Same as or not more than one size smaller than cleanout size.

B. Cast-Iron Wall Cleanouts:

1. Manufacturers: Subject to compliance with requirements, provide products by one of the following:
 - a. Josam Company; Josam Div.

- b. MIFAB, Inc.
 - c. Smith, Jay R. Mfg. Co.
 - d. Tyler Pipe; Wade Div.
 - e. Watts Drainage Products.
 - f. Zurn Plumbing Products Group; Specification Drainage Operation.
2. Standard: ASME A112.36.2M. Include wall access.
 3. Size: Same as connected drainage piping.
 4. Body: Hubless, cast-iron soil pipe test tee as required to match connected piping.
 5. Closure: Countersunk or raised-head, drilled-and-threaded brass plug.
 6. Closure Plug Size: Same as or not more than one size smaller than cleanout size.
 7. Wall Access: Round, flat, chrome-plated brass or stainless-steel cover plate with screw.
 8. Wall Access: Round, nickel-bronze, copper-alloy, or stainless-steel wall-installation frame and cover.

2.3 FLOOR DRAINS

A. Cast-Iron Floor Drains:

1. Manufacturers: Subject to compliance with requirements, provide products by one of the following:
 - a. Commercial Enameling Co.
 - b. Josam Company; Josam Div.
 - c. MIFAB, Inc.
 - d. Prier Products, Inc.
 - e. Smith, Jay R. Mfg. Co.
 - f. Tyler Pipe; Wade Div.
 - g. Watts Drainage Products.
2. Standard: ASME A112.6.3.
3. Pattern: Floor drain.
4. Body Material: Gray iron.
5. Seepage Flange: Required.
6. Anchor Flange: Required.
7. Clamping Device: Not required.
8. Outlet: Bottom.
9. Coating on Interior and Exposed Exterior Surfaces: Not required.
10. Sediment Bucket: Not required.
11. Top or Strainer Material: Gray iron.
12. Top Shape: Round.
13. Top Loading Classification: Medium Duty.
14. Funnel: Not required.
15. Inlet Fitting: Not required.
16. Trap Material: Cast iron.
17. Trap Pattern: Standard P-trap.
18. Trap Features: Trap-seal primer valve drain connection.

2.4 AIR-ADMITTANCE VALVES

A. Fixture Air-Admittance Valves:

1. Manufacturers: Subject to compliance with requirements, provide products by one of the following:
 - a. Ayrlett, LLC.
 - b. Durgo, Inc.
 - c. Oatey.
 - d. ProSet Systems Inc.
 - e. RectorSeal.
 - f. Studor, Inc.
2. Standard: ASSE 1051, Type A for single fixture or Type B for branch piping.
3. Housing: Plastic.
4. Operation: Mechanical sealing diaphragm.
5. Size: Same as connected fixture or branch vent piping.

B. Stack Air-Admittance Valves:

1. Manufacturers: Subject to compliance with requirements, provide products by one of the following:
 - a. Durgo, Inc.
 - b. Oatey.
 - c. Studor, Inc.
2. Standard: ASSE 1050 for vent stacks.
3. Housing: Plastic.
4. Operation: Mechanical sealing diaphragm.
5. Size: Same as connected stack vent or vent stack.

2.5 ROOF FLASHING ASSEMBLIES

A. Roof Flashing Assemblies:

1. Manufacturers: Subject to compliance with requirements, provide products by one of the following:
 - a. Acorn Engineering Company; Elmdor/Stoneman Div.
 - b. Thaler Metal Industries Ltd.
2. Description: Manufactured assembly made of 4.0-lb/sq. ft., 0.0625-inch- thick, lead flashing collar and skirt extending at least 6 inches from pipe, with galvanized-steel boot reinforcement and counterflashing fitting.
 - a. Open-Top Vent Cap: Without cap.

2.6 THROUGH-PENETRATION FIRESTOP ASSEMBLIES

A. Through-Penetration Firestop Assemblies:

1. Manufacturers: Subject to compliance with requirements, provide products by one of the following:
 - a. ProSet Systems Inc.
2. Standard: UL 1479 assembly of sleeve and stack fitting with firestopping plug.
3. Size: Same as connected soil, waste, or vent stack.
4. Sleeve: Molded PVC plastic, of length to match slab thickness and with integral nailing flange on one end for installation in cast-in-place concrete slabs.

2.7 MISCELLANEOUS SANITARY DRAINAGE PIPING SPECIALTIES

A. Open Drains:

1. Description: Shop or field fabricate from ASTM A 74, Service class, hub-and-spigot, cast-iron, soil-pipe fittings. Include P-trap, hub-and-spigot riser section; and where required, increaser fitting joined with ASTM C 564, rubber gaskets.
2. Size: Same as connected waste piping.

B. Deep-Seal Traps:

1. Description: Cast-iron or bronze casting, with inlet and outlet matching connected piping and cleanout trap-seal primer valve connection.
2. Size: Same as connected waste piping.
 - a. NPS 2: 4-inch- minimum water seal.
 - b. NPS 2-1/2 and Larger: 5-inch- minimum water seal.

C. Air-Gap Fittings:

1. Standard: ASME A112.1.2, for fitting designed to ensure fixed, positive air gap between installed inlet and outlet piping.
2. Body: Bronze or cast iron.
3. Inlet: Opening in top of body.
4. Outlet: Larger than inlet.
5. Size: Same as connected waste piping and with inlet large enough for associated indirect waste piping.

D. Sleeve Flashing Device:

1. Description: Manufactured, cast-iron fitting, with clamping device that forms sleeve for pipe floor penetrations of floor membrane. Include galvanized-steel pipe extension in top of fitting that will extend 2 inches above finished floor and galvanized-steel pipe extension in bottom of fitting that will extend through floor slab.

2. Size: As required for close fit to riser or stack piping.

E. Stack Flashing Fittings:

1. Description: Counterflashing-type, cast-iron fitting, with bottom recess for terminating roof membrane, and with threaded or hub top for extending vent pipe.
2. Size: Same as connected stack vent or vent stack.

F. Frost-Resistant Vent Terminals:

1. Description: Manufactured or shop-fabricated assembly constructed of copper, lead-coated copper, or galvanized steel.
2. Design: To provide 1-inch enclosed air space between outside of pipe and inside of flashing collar extension, with counterflashing.

2.8 FLASHING MATERIALS

A. Lead Sheet: ASTM B 749, Type L51121, copper bearing, with the following minimum weights and thicknesses, unless otherwise indicated:

1. General Use: 4.0-lb/sq. ft., 0.0625-inch thickness.
2. Vent Pipe Flashing: 3.0-lb/sq. ft., 0.0469-inch thickness.
3. Burning: 6-lb/sq. ft., 0.0938-inch thickness.

B. Elastic Membrane Sheet: ASTM D 4068, flexible, chlorinated polyethylene, 40-mil minimum thickness.

C. Fasteners: Metal compatible with material and substrate being fastened.

D. Metal Accessories: Sheet metal strips, clamps, anchoring devices, and similar accessory units required for installation; matching or compatible with material being installed.

E. Solder: ASTM B 32, lead-free alloy.

F. Bituminous Coating: SSPC-Paint 12, solvent-type, bituminous mastic.

PART 3 - EXECUTION

3.1 INSTALLATION

A. Install cleanouts in aboveground piping and building drain piping according to the following, unless otherwise indicated:

1. Size same as drainage piping up to NPS 4. Use NPS 4 for larger drainage piping unless larger cleanout is indicated.
2. Locate at each change in direction of piping greater than 45 degrees.

3. Locate at minimum intervals of 50 feet for piping NPS 4 and smaller and 100 feet for larger piping.
 4. Locate at base of each vertical soil and waste stack.
- B. For floor cleanouts for piping below floors, install cleanout deck plates with top flush with finished floor.
- C. For cleanouts located in concealed piping, install cleanout wall access covers, of types indicated, with frame and cover flush with finished wall.
- D. Install floor drains at low points of surface areas to be drained. Set grates of drains flush with finished floor, unless otherwise indicated.
1. Position floor drains for easy access and maintenance.
 2. Set floor drains below elevation of surrounding finished floor to allow floor drainage. Set with grates depressed according to the following drainage area radii:
 - a. Radius, 30 Inches or Less: Equivalent to 1 percent slope, but not less than 1/4-inch total depression.
 - b. Radius, 30 to 60 Inches: Equivalent to 1 percent slope.
 - c. Radius, 60 Inches or Larger: Equivalent to 1 percent slope, but not greater than 1-inch total depression.
 3. Install floor-drain flashing collar or flange so no leakage occurs between drain and adjoining flooring. Maintain integrity of waterproof membranes where penetrated.
 4. Install individual traps for floor drains connected to sanitary building drain, unless otherwise indicated.
- E. Install flashing fittings on sanitary stack vents and vent stacks that extend through roof.
- F. Install through-penetration firestop assemblies in plastic conductors and stacks at floor penetrations.
- G. Assemble open drain fittings and install with top of hub 1 inch above floor.
- H. Install deep-seal traps on floor drains and other waste outlets, if indicated.
- I. Install floor-drain, trap-seal primer fittings on inlet to floor drains that require trap-seal primer connection.
1. Exception: Fitting may be omitted if trap has trap-seal primer connection.
 2. Size: Same as floor drain inlet.
- J. Install air-gap fittings on draining-type backflow preventers and on indirect-waste piping discharge into sanitary drainage system.
- K. Install sleeve flashing device with each riser and stack passing through floors with waterproof membrane.

- L. Install frost-resistant vent terminals on each vent pipe passing through roof. Maintain 1-inch clearance between vent pipe and roof substrate.
- M. Install expansion joints on vertical stacks and conductors. Position expansion joints for easy access and maintenance.
- N. Install wood-blocking reinforcement for wall-mounting-type specialties.
- O. Install traps on plumbing specialty drain outlets. Omit traps on indirect wastes unless trap is indicated.

3.2 CONNECTIONS

- A. Comply with requirements in Section 221316 "Sanitary Waste and Vent Piping" for piping installation requirements. Drawings indicate general arrangement of piping, fittings, and specialties.
- B. Install piping adjacent to equipment to allow service and maintenance.
- C. Ground equipment according to Section 260526 "Grounding and Bonding for Electrical Systems."
- D. Connect wiring according to Section 260519 "Low-Voltage Electrical Power Conductors and Cables."

3.3 FLASHING INSTALLATION

- A. Fabricate flashing from single piece unless large pans, sumps, or other drainage shapes are required. Join flashing according to the following if required:
 - 1. Lead Sheets: Burn joints of lead sheets 6.0-lb/sq. ft., 0.0938-inch thickness or thicker. Solder joints of lead sheets 4.0-lb/sq. ft., 0.0625-inch thickness or thinner.
- B. Install sheet flashing on pipes, sleeves, and specialties passing through or embedded in floors and roofs with waterproof membrane.
 - 1. Pipe Flashing: Sleeve type, matching pipe size, with minimum length of 10 inches, and skirt or flange extending at least 8 inches around pipe.
 - 2. Sleeve Flashing: Flat sheet, with skirt or flange extending at least 8 inches around sleeve.
 - 3. Embedded Specialty Flashing: Flat sheet, with skirt or flange extending at least 8 inches around specialty.
- C. Set flashing on floors and roofs in solid coating of bituminous cement.
- D. Secure flashing into sleeve and specialty clamping ring or device.

- E. Install flashing for piping passing through roofs with counterflashing or commercially made flashing fittings, according to Section 076200 "Sheet Metal Flashing and Trim."
- F. Fabricate and install flashing and pans, sumps, and other drainage shapes.

3.4 PROTECTION

- A. Protect drains during remainder of construction period to avoid clogging with dirt or debris and to prevent damage from traffic or construction work.
- B. Place plugs in ends of uncompleted piping at end of each day or when work stops.

END OF SECTION 221319

SECTION 224216.13 - COMMERCIAL LAVATORIES

PART 1 - GENERAL

1.1 RELATED DOCUMENTS

- A. Drawings and general provisions of the Contract, including General and Supplementary Conditions and Division 01 Specification Sections, apply to this Section.

1.2 SUMMARY

- A. Section Includes:
 - 1. Lavatories.
 - 2. Faucets.

1.3 ACTION SUBMITTALS

- A. Product Data: For each type of product.
 - 1. Include construction details, material descriptions, dimensions of individual components and profiles, and finishes for lavatories.
 - 2. Include rated capacities, operating characteristics, electrical characteristics, and furnished specialties and accessories.
- B. Shop Drawings: Include diagrams for power, signal, and control wiring of automatic faucets.

1.4 INFORMATIONAL SUBMITTALS

- A. Coordination Drawings: Counter cutout templates for mounting of counter-mounted lavatories.

1.5 CLOSEOUT SUBMITTALS

- A. Operation and Maintenance Data: For lavatories and faucets to include in operation and maintenance manuals.

PART 2 - PRODUCTS

2.1 VITREOUS-CHINA, COUNTER-MOUNTED LAVATORIES

- A. Lavatory: Oval, vitreous china, undercounter mounted.
1. Manufacturers: Subject to compliance with requirements, provide products by one of the following:
 - a. American Standard America.
 - b. Crane Plumbing, L.L.C.
 - c. Gerber Plumbing Fixtures LLC.
 - d. Kohler Co.
 - e. Mansfield Plumbing Products LLC.
 2. Fixture:
 - a. Standard: ASME A112.19.2/CSA B45.1.
 - b. Type: For undercounter mounting.
 - c. Nominal Size: Oval, 17 by 14 inches.
 - d. Faucet-Hole Punching: No holes.
 - e. Faucet-Hole Location: On countertop.
 - f. Color: White.
 - g. Mounting Material: Sealant and undercounter mounting kit.
 3. Faucet: Solid-Brass, Automatically Operated Lavatory Faucets.

2.2 SOLID-BRASS, MANUALLY OPERATED FAUCETS

- A. NSF Standard: Comply with NSF/ANSI 61, "Drinking Water System Components - Health Effects," for faucet materials that will be in contact with potable water.
- B. Lavatory Faucets: Manual-type, single-control mixing and two-handle mixing, commercial, solid-brass valve.
1. Manufacturers: Subject to compliance with requirements, provide products by one of the following:
 - a. American Standard America.
 - b. Bradley Corporation.
 - c. Chicago Faucets.
 - d. Delta Faucet Company.
 - e. Elkay Manufacturing Co.
 - f. Grohe America, Inc.
 - g. Just Manufacturing.
 - h. Kohler Co.
 - i. Moen Incorporated.

- j. Speakman Company.
 - k. T & S Brass and Bronze Works, Inc.
 - l. Zurn Industries, LLC; Commercial Brass and Fixtures.
-
- 2. Standard: ASME A112.18.1/CSA B125.1.
 - 3. General: Include hot- and cold-water indicators; coordinate faucet inlets with supplies and fixture hole punchings; coordinate outlet with spout and fixture receptor.
 - 4. Body Type: Widespread and Single hole.
 - 5. Body Material: Commercial, solid brass.
 - 6. Finish: Polished chrome plate.
 - 7. Maximum Flow Rate: 0.5 gpm.
 - 8. Maximum Flow: 0.25 gal. per metering cycle.
 - 9. Mounting Type: Deck, exposed.
 - 10. Valve Handle(s): Single lever and Push button.
 - 11. Spout: Rigid type.
 - 12. Spout Outlet: Aerator.
 - 13. Operation: Compression, manual.
 - 14. Drain: Not part of faucet.

2.3 SUPPLY FITTINGS

- A. NSF Standard: Comply with NSF/ANSI 61, "Drinking Water System Components - Health Effects," for supply-fitting materials that will be in contact with potable water.
- B. Standard: ASME A112.18.1/CSA B125.1.
- C. Supply Piping: Chrome-plated-brass pipe or chrome-plated copper tube matching water-supply piping size. Include chrome-plated-brass or stainless-steel wall flange.
- D. Supply Stops: Chrome-plated-brass, one-quarter-turn, ball-type or compression valve with inlet connection matching supply piping.
- E. Operation: Wheel handle.
- F. Risers:
 - 1. NPS 3/8.
 - 2. ASME A112.18.6, braided- or corrugated-stainless-steel, flexible hose riser.

2.4 WASTE FITTINGS

- A. Standard: ASME A112.18.2/CSA B125.2.
- B. Drain: Grid type with NPS 1-1/4 offset and straight tailpiece.
- C. Trap:

1. Size: NPS 1-1/4.
2. Material: Chrome-plated, two-piece, cast-brass trap and swivel elbow with 0.032-inch-thick brass tube to wall; and chrome-plated, brass or steel wall flange.

PART 3 - EXECUTION

3.1 EXAMINATION

- A. Examine roughing-in of water supply and sanitary drainage and vent piping systems to verify actual locations of piping connections before lavatory installation.
- B. Examine counters and walls for suitable conditions where lavatories will be installed.
- C. Proceed with installation only after unsatisfactory conditions have been corrected.

3.2 INSTALLATION

- A. Install lavatories level and plumb according to roughing-in drawings.
- B. Install supports, affixed to building substrate, for wall-mounted lavatories.
- C. Install wall flanges or escutcheons at piping wall penetrations in exposed, finished locations. Use deep-pattern escutcheons if required to conceal protruding fittings. Comply with escutcheon requirements specified in Section 220518 "Escutcheons for Plumbing Piping."
- D. Seal joints between lavatories, counters, and walls using sanitary-type, one-part, mildew-resistant silicone sealant. Match sealant color to fixture color.

3.3 CONNECTIONS

- A. Connect fixtures with water supplies, stops, and risers, and with traps, soil, waste, and vent piping. Use size fittings required to match fixtures.
- B. Comply with water piping requirements specified in Section 221116 "Domestic Water Piping."
- C. Comply with soil and waste piping requirements specified in Section 221316 "Sanitary Waste and Vent Piping."

3.4 ADJUSTING

- A. Operate and adjust lavatories and controls. Replace damaged and malfunctioning lavatories, fittings, and controls.
- B. Adjust water pressure at faucets to produce proper flow.

- C. Install fresh batteries in battery-powered, electronic-sensor mechanisms.

3.5 CLEANING AND PROTECTION

- A. After completing installation of lavatories, inspect and repair damaged finishes.
- B. Clean lavatories, faucets, and other fittings with manufacturers' recommended cleaning methods and materials.
- C. Provide protective covering for installed lavatories and fittings.
- D. Do not allow use of lavatories for temporary facilities unless approved in writing by Owner.

END OF SECTION 224216.13

1

2

3

4

5

6

7

8

GENERAL PLUMBING NOTES

- ALL PIPING AND EQUIPMENT SHOWN DIAGRAMMATICALLY ONLY. GENERAL ORIENTATION SHOWN IN PLAN AND SECTIONAL DWGS. EXACT LOCATION TO BE DETERMINED IN FIELD. MAINTAIN HEAD ROOM AND SPACE CONDITIONS AT ALL TIMES. ALL WORK SHALL BE COORDINATED WITH ALL TRADES BEFORE PROCEEDING WITH INSTALLATION. PRIOR TO CONSTRUCTION, CONTRACTOR SHALL NOTIFY ARCHITECT OF ANY DISCREPANCIES.
- FABRICATE AND INSTALL ALL PIPING IN ACCORDANCE WITH THE STATE PLUMBING CODE, LOCAL PLUMBING CODE, APPLICABLE SECTIONS OF THE BUILDING CODE AND THE NATIONAL FIRE PROTECTION ASSOCIATION (NFPA).
- INSTALL PIPING CLOSE TO WALLS, PARTITIONS, CEILINGS, ETC. OFFSET ONLY WHERE NECESSARY TO FOLLOW WALLS, AS INDICATED. PROVIDE ALL NECESSARY FITTINGS, OFFSETS AND VALVES AND OTHER DEVICES REQUIRED FOR A COMPLETE INSTALLATION.
- INSTALL PIPING IN A CONCEALED MANNER, STRAIGHT, PLUMB AND AS DIRECT AS POSSIBLE. FORM RIGHT ANGLES PARALLEL WITH BUILDING WALLS. LOCATE GROUPS OF PIPES PARALLEL TO EACH OTHER. PIPE WILL BE LOCATED TO PERMIT ACCESS FOR SERVICE VALVES.
- ALL PIPING SHALL BE REAMED TO BE FREE OF BURRS. KEEP PIPING FREE FROM SCALE AND DIRT. PROTECT OPEN PIPE ENDS WHENEVER WORK IS SUSPENDED DURING CONSTRUCTION TO PREVENT FOREIGN MATERIAL ENTERING AND LOGGING THERE. USE TEMPORARY PLUG, BURLAP, OR OTHER APPROVED MATERIAL FOR PROTECTION.
- BURIED DOMESTIC WATER PIPE SHALL NOT BE TYPE "L" COPPER. BURIED DOMESTIC WATER PIPE SHALL BE TYPE "K" COPPER. INSTALL BALL VALVES ON ALL BRANCH SUPPLY LINES. INSULATE COLD WATER SYSTEMS WITH A MINIMUM 1/2" THICK ARMAFLEX COVERING. HOT WATER SYSTEMS WITH A MINIMUM 1" THICK ARMAFLEX COVERING. DO NOT INSTALL JOINTS BELOW SLAB.
- ALL GAS PIPING AND OTHER PLUMBING SYSTEMS SHALL BE SEISMICALLY BRACED IN ACCORDANCE WITH THE APPLICABLE SECTIONS OF THE STATE BUILDING CODE AND THE NATIONAL FIRE PROTECTION ASSOCIATION (NFPA). SEAL ALL WALL AND FLOOR PENETRATIONS AROUND NEW PIPES WITH FIRE PROOF CAULKING.
- MAINTENANCE LABEL SHALL BE AFFIXED TO ALL PLUMBING EQUIPMENT AND A MAINTENANCE MANUAL SHALL BE PROVIDED TO OWNER.
- INSTALL WELDED OR THREADED PIPE IN AREAS WHERE SPACE IS CRITICAL BETWEEN FINISHED CEILING AND STRUCTURAL SURFACE. INSTALL ALL VENTS THRU ROOF 10'-0" MINIMUM FROM EDGE OF ROOF AND 25'-0" FROM FRESH AIR INTAKES.
- SUBMIT ALL DOCUMENTS FOR APPROVAL TO LOCAL PLUMBING AUTHORITIES PERTAINING TO THE PLUMBING SYSTEMS. THE ENTIRE PLUMBING SYSTEM SHALL BE INSTALLED IN COMPLIANCE WITH NFPA AND BUILDING CODES OR REGULATIONS.
- SUBMIT TO LOCAL WATER COMPANY APPROVED PRESSURE REDUCING VALVES AND BACKFLOW PREVENTION DEVICES. CONTRACTOR SHALL FURNISH AND INSTALL ALL NECESSARY DEVICES AS PER WATER COMPANY REQUIREMENTS AND MANUFACTURER RECOMMENDATIONS. USE WATTS PRODUCT OR APPROVED EQUAL.
- ALL WALL, CEILING AND FLOOR PENETRATIONS CONVEYING DUCTWORK, ELECTRICAL CONDUIT, PLUMBING, HEATING AND DRAINS, SPRINKLER PIPING, FIRE ALARM AND COMMUNICATION CONDUITS AND CABLING SHALL BE FULLY SEALED AND CALKED AROUND THE PENETRATING FEATURE TO RESTORE THE REQUIRED FIRE OR SMOKE BARRIER RATING OF THE WALL, CEILING OR FLOOR PENETRATED, AS A MINIMUM, AT ALL LOCATIONS. A TWENTY (20) MINUTE FIRE/SMOKE RESISTANCE SHALL BE MAINTAINED, WHERE REQUIRED BY CODE. THE PENETRATING FEATURES SHALL ALSO BE SUPPLIED AND INSTALLED WITH A MECHANISM OR MATERIAL WHICH WILL MAINTAIN THE WALL, CEILING OR FLOOR RATING IN THE CASE OF A FIRE.
- PROVIDE FLUSH TYPE ACCESS DOORS OR PANEL NO SMALLER THAN 12"x12" AND NO LARGER THEN 30"x30" FOR ALL VALVES OR APPARATUS LOCATED IN CHASES, WALLS, NON ACCESSIBLE CEILINGS OR FLOOR.
- ALL BURIED STORM, SANITARY WASTE, AND VENT PIPING SHALL BE CAST-IRON SOIL PIPE ASTM A74. SERVICE WEIGHT, HUB-AND-SPIGOT SOIL PIPE SHALL BE FIRMLY PACKED WITH OAKUM OR HEAVY AND FILLED WITH MOLTEN LEAD NOT LESS THAN 1-INCH DEEP WHICH SHALL BE RUN IN ONE POURING AND CHAULKED TIGHT WHEN COLD. AND FITTINGS SHALL HAVE A HEAVY COATING OF COAL TAR VARNISH OR ASPHALTUM ON BOTH INSIDE AND OUTSIDE SURFACES. CLEANOUTS SHALL BE PROVIDED AT THE LOCATIONS INDICATED ON PLANS. PLUMBING CONTRACTOR TO PROVIDE ADDITIONAL FLOOR CLEANOUTS IN ACCORDANCE WITH THE STATE PLUMBING CODE. (90° ON CENTER FOR 4" PIPE, 100° ON CENTER FOR 6" PIPE OR GREATER)
- FLOOR CLEANOUTS SHALL BE PER CLEANOUT SCHEDULE. PROVIDE CLEANOUTS FOR ALL HORIZONTAL STORM AND SANITARY AT EVERY CHANGE IN DIRECTION.
- ALL ABOVE GROUND STORM, SANITARY WASTE, AND VENT PIPING TO BE CAST IRON SOIL PIPE. JOINTS ON HUBLESS CAST IRON SOIL PIPE SHALL BE MADE WITH NEOPRENE GASKETS COUPLINGS AND 4 BAND STAINLESS STEEL CLAMPS. TYPE "DW" COPPER FOR ABOVE GROUND VENT PIPING AT CONTRACTOR'S OPTION.
- PRIOR TO INSTALLING ANY UNDERGROUND PIPING, VERIFY EXISTING OR NEW INVERT ELEVATIONS, LOCATIONS AND PIPE SIZES. INSTALL ALL WASTE AND STORM MAINS BEGINNING AT LOW POINT OF EACH SYSTEM AND CONTINUE WITH UNBROKEN CONTINUITY OF INVERT. LOW POINT OF EACH SYSTEM SHALL BE COORDINATED WITH SITE UTILITIES CONTRACTOR. REFER TO SITE UTILITY PLANS FOR REFERENCE.
- FLOOR DRAINS SHALL EACH BE PROVIDED WITH TRAP PRIMER CONNECTION AND 1/2" LINES BACK TO APPROVED AUTOMATIC PRIMER DEVICE. PRIMERS MAY NOT BE INDICATED ON THE PLANS. CONTRACTOR SHALL FIELD LOCATE PRIMER DEVICE IN A CONCEALED LOCATION.
- DRAIN VALVES ON LOWEST POINT OF DOMESTIC WATER RISERS TO BE PROVIDED AS FOLLOWS:
 - 1-1/2" OR LESS-PROVIDE 3/4" DRAIN VALVE
 - 2" OR LARGER-PROVIDE 1/2" DRAIN VALVE
- PROVIDE ON ALL FIXTURES OR EQUIPMENT THAT IS REQUIRED PER LOCAL AND STATE CODE.
- ISOLATION VALVES AND BACKFLOW PREVENTION DEVICES WHERE APPLICABLE. SEE BACKFLOW PREVENTION DEVICE SCHEDULE.
- ALL WORK SHALL BE PROPERLY TESTED, BALANCED AND CLEANED. PROVIDE A ONE YEAR WARRANTY FROM DATE OF FINAL INSPECTION ON ALL PARTS AND LABOR.
- REFER TO ARCHITECTURAL DRAWING FOR ROUGHING DIMENSIONS OF FIXTURES.
- PROVIDE FLUSH TYPE ACCESS DOORS OR PANEL NO SMALLER THAN 12"x12" AND NO LARGER THEN 30"x30" FOR ALL VALVES OR APPARATUS LOCATED IN CHASES, WALLS, NON ACCESSIBLE CEILINGS OR FLOOR.
- SANITARY AND VENT PIPING AND FITTINGS IS NO-HUB CAST IRON ASTM A 888. COUPLINGS ASTM C 1277 POLYPROPYLENE PIPING AND FITTINGS SOCKET OR BUTT FUSION AND MECHANICAL JOINT CONFORM TO ASTM F 1412 AND ASTM D 3311 - LAB WASTE. DOMESTIC WATER PIPING AND FITTINGS TYPE L CONFORM TO ASTM B88 JOINTS PRO-PRESS AND OR SWEAT 95 / 5 SOLDER.

PROJECT NOTES

THE SCOPE OF WORK SHALL INCLUDE PROVIDING ALL WORK INDICATED, AND COORDINATION WITH ALL TRADES. SCOPE OF WORK IS INDICATED ON THE CONTRACT DOCUMENTS INCLUDING THE DRAWINGS AND THE SPECIFICATIONS, WHICH ARE COMPLEMENTARY. WORK INDICATED IN ANY CONTRACT DOCUMENT SHALL BE CONSIDERED PART OF THE SCOPE OF WORK. IN GENERAL, WORK REQUIREMENTS ARE NOT INDICATED IN BOTH DOCUMENTS. WHERE DOCUMENTS CONFLICT WITHIN THEMSELVES OR WITH CODES AND REGULATIONS, PROVIDE THE HIGHER QUANTITY AND QUALITY AND FOLLOW THE STRICTER REQUIREMENTS.

VISIT THE SITE TO DETERMINE PRE-EXISTING CONDITIONS AND WORK NECESSARY PRIOR TO SUBMISSION OF BID PRICE. INCLUDE ALL REQUIRED WORK IN BID PRICE.

EQUIPMENT COORDINATION NOTES

PRIOR TO CONSTRUCTION OR INSTALLATION, CONTRACTOR WILL COORDINATE WITH GENERAL CONTRACTOR AND ALL TRADES. ROUGH-IN OF PLUMBING EQUIPMENT OR EQUIPMENT FURNISHED BY OWNER. REFER TO SHOP DRAWINGS OR EQUIPMENT SPECIFICATIONS FOR EXACT REQUIREMENTS OF EQUIPMENT TO BE INSTALLED. PROVIDE ALL FITTINGS, GAUGES AND ACCESSORIES FOR A COMPLETE INSTALLATION.

ALL EQUIPMENT SHALL BE INSTALLED IN STRICT ACCORDANCE WITH THE EQUIPMENT MANUFACTURER'S RECOMMENDATIONS AND APPLICABLE CODES.

PLUMBING CODE REQUIREMENTS

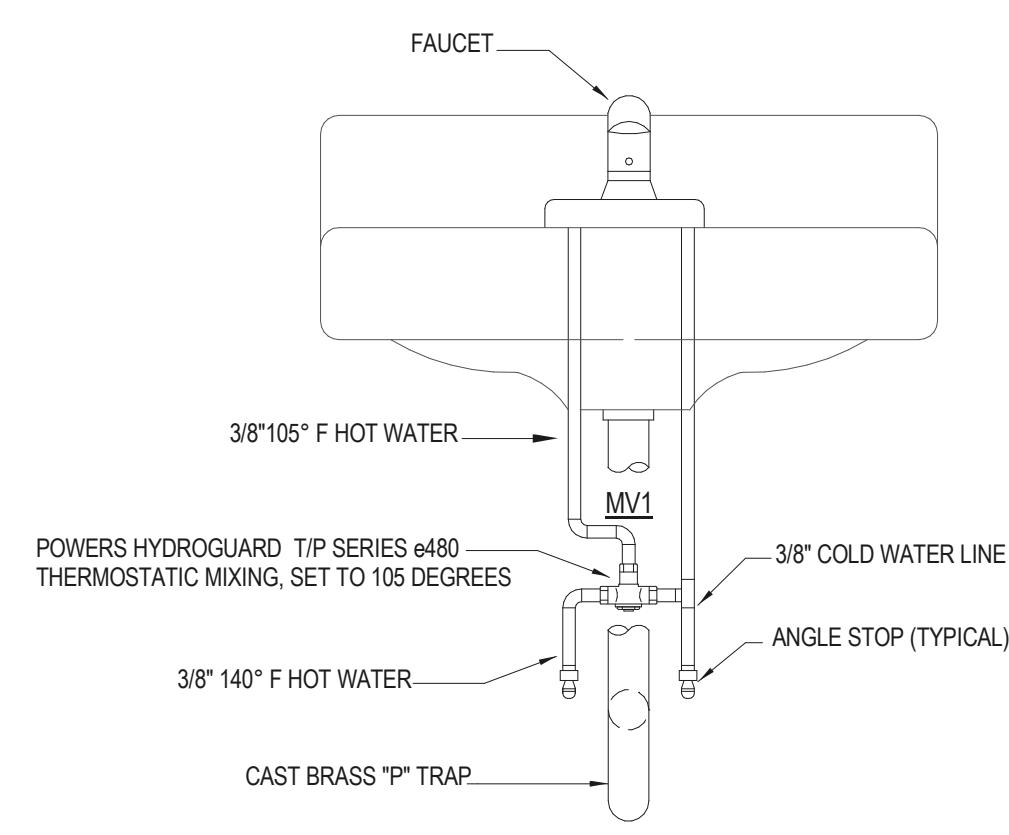
CONTRACTOR SHALL CONFORM TO ALL LOCAL CODES AND ANY OTHER AUTHORITY HAVING JURISDICTION INCLUDING:

PHILADELPHIA PLUMBING CODE - CURRENT EDITION
PHILADELPHIA SCHOOL IMPROVEMENT TEAM VOLUME #1 BUILDING DESIGN CRITERIA

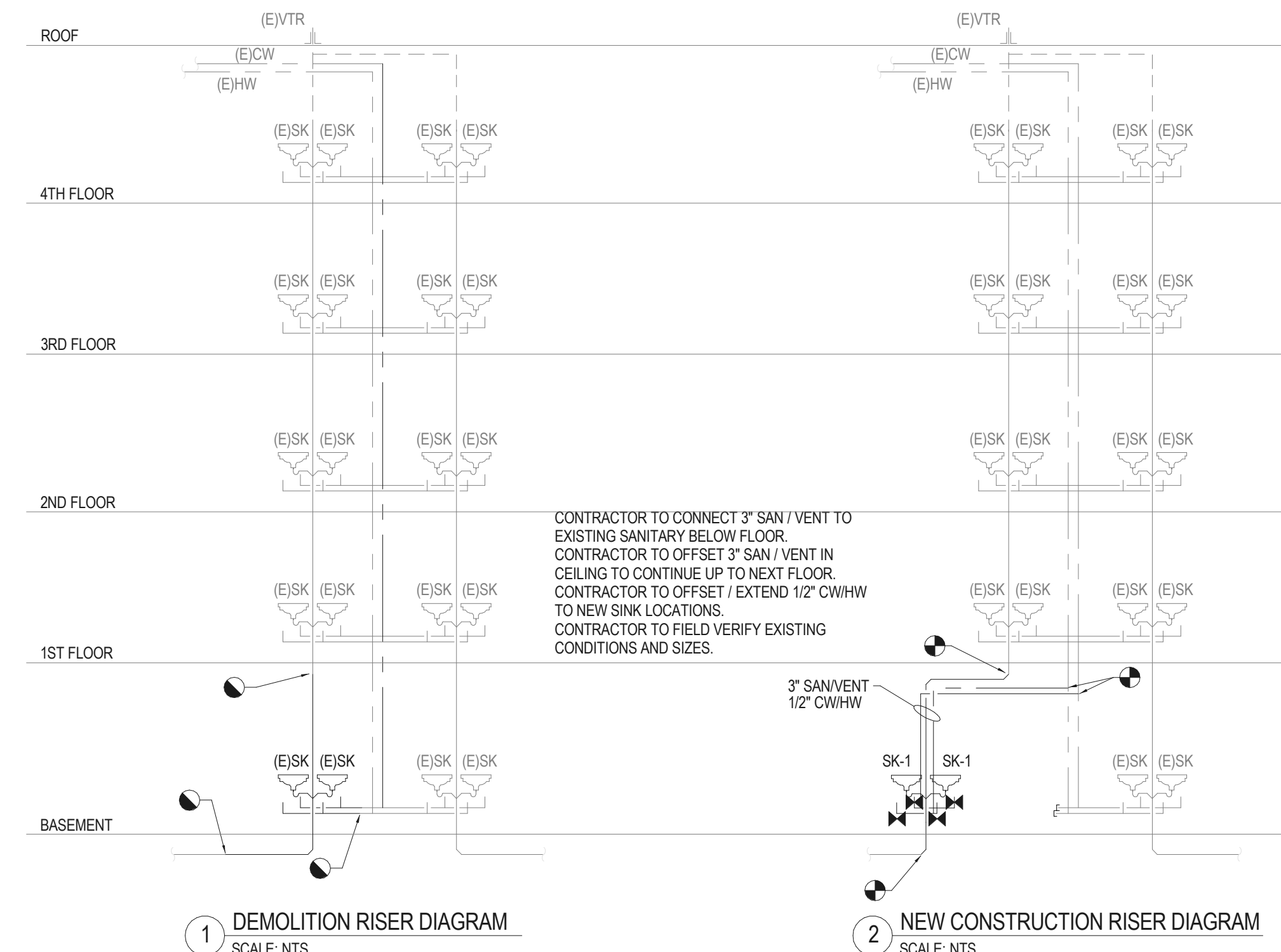
CONTRACTOR SHALL ALSO PROVIDE ALL PERMITS AND PAY ALL FEES REQUIRED FOR PERMITS.

PLUMBING FIXTURE SCHEDULE

TAG	DESCRIPTION	WASTE	VENT	C.W.	H.W.	FLOW	REMARKS
SK-1	LAVATORY WALL HUNG AMERICAN STANDARD MODEL # 9855.001EC, WHITE	2"	2"	1/2"	1/2"	0.35 GPM	FAUCET-CHICAGO FAUCET METERING 333-686E39PH48CCP WITH AERATOR, MCQUIRE 1 1/2" CHROME P-TRAP WITH CLEAN OUT, MCQUIRE STOP & RISER 216SOC. PROVIDE WITH MANUFACTURERS WALL HANGER.



3 LAVATORY SINK DETAIL
SCALE: NTS



1 DEMOLITION RISER DIAGRAM
SCALE: NTS

2 NEW CONSTRUCTION RISER DIAGRAM
SCALE: NTS

DESCRIPTION	SYMBOL
SANITARY PIPING A.F.F. OR GRADE	S
SANITARY PIPING B.F.F. OR GRADE	S
INDIRECT WASTE PIPING A.F.F. OR GRADE	IW
INDIRECT WASTE PIPING B.F.F. OR GRADE	IW
STORM PIPING A.F.F. OR GRADE	ST
STORM PIPING B.F.F. OR GRADE	ST
CONDENSATE DRAIN	C
COLD WATER	
HOT WATER	
HOT WATER RECIRC.	
EXISTING SANITARY PIPING	(E)SAN
EXISTING COLD WATER	(E)CW
EXISTING HOT WATER	(E)HW
EXISTING HOT WATER RECIRC.	(E)HWR
GROUND / FLOOR CLEAN OUT	GCO (circle with dot) FCO (circle with dot)
HORIZONTAL CLEAN OUT	—
ANGLE SHUT OFF VALVE	⊞
P TRAP	⊞
PIPE DROP & RISE	↘ ↗
PIPE UP OR DOWN	↕
WATER TIGHT PIPE SLEEVE	⊞
DISCONNECT EXISTING FOR NEW CONNECTION	⊞
VENT THROUGH ROOF (VTR)	PLAN (circle with dot) RISER (vertical line with dot)
SLOPE	↘
DIRECTION OF FLOW	→

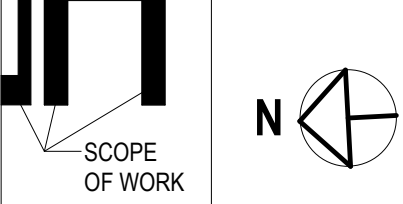
LEGEND NOTES

THIS SHEET IS A GENERAL LIST OF SYMBOLS, ABBREVIATIONS AND SHALL BE USED AS A DICTIONARY TO DEFINE ITEMS INDICATED ON DRAWINGS. NOT ALL SYMBOLS OR ABBREVIATIONS ARE NECESSARILY USED ON THIS PROJECT.

4 BASEMENT GIRLS BATHROOM PLUMBING PLAN
1/4" = 1'-0"

5 BASEMENT GIRLS BATHROOM PLUMBING DEMOLITION PLAN
1/4" = 1'-0"

KEY PLAN



PROJECT NUMBER: 18027000
Copyright (c) by NORR. All Rights Reserved.

2/14/2019

REV	DATE	DESCRIPTION
02/14/2019		ADDENDUM #2

WALKWAY REPLACEMENT & RAMP ADDITION

PLUMBING BASEMENT PLAN AND DETAILS

DRAWING SCALE AS NOTED	
LOCATION NO.	FILE NO.
DRAWN BY: RRL	CHECKED BY: JO
OF 2017-2018	

DRAWING NO.
P100