

THE SCHOOL DISTRICT OF PHILADELPHIA
BOARD OF EDUCATION
Office of Capital Programs
440 North Broad Street, Third Floor - Suite 371
Philadelphia, PA 19130-4015

TELEPHONE: (215) 400-4730

Addendum No. 01

Subject: **Edmonds Classroom Modernization Project
B-031C, B-032C, 33C of 2018/19**

Location: **Franklin S. Edmonds Elementary School
8025 Thouron Avenue
Philadelphia, PA 19150**

This Addendum, ***dated February 26, 2019***, shall modify and become part of the Contract Documents for the work of this project. Any items not mentioned herein, or affected by, shall be performed strictly in accordance with the original documents.

1. Drawings and Specifications Revised by Narrative Note drawing text deletions are shown with ~~strikethrough~~, drawing text additions are shown in **bold**

a. A300: CASEWORK SCHEDULE:

The Casework Schedule is revised as follows:

THE BASIS OF DESIGN CABINET SHALL BE CAMPBELL RHEA "EMPIRE" Full Flush Overlay with Solid Wood Edging. DELETE REFERENCES TO "SIGNATURE" STYLE CABINETS.

THE BASIS OF DESIGN MODEL FOR CABINET TYPE CT1 IS CHANGED TO 5866, 35-1/4" (W) X 84" (H) X 22-1/2" (D)

THE BASIS OF DESIGN MODEL FOR CABINET TYPE CT2 IS CHANGED TO 5866, 35-1/4" (W) X 84" (H) X 22-1/2" (D)

THE QUANTITIES AND TYPES OF WALL RAILS AND COAT HOOKS ARE REVISED

THE ABOVE CHANGES TO THE CASEWORK SCHEDULE ARE SHOWN IN THE REVISED A300-Rev 1 DRAWING ISSUED WITH THIS ADDENDUM.

b. A300: WALL EQUIPMENT SCHEDULE:

The Wall Equipment Schedule is revised as follows:

DELETE ALL THE NOTES UNDER THE "COMMENTS" COLUMN OF THE SCHEDULE.

Work in connection with Display Boards shall be conducted as follows:

IPBs SHALL BE SUPPLIED AND INSTALLED BY OTHERS UNDER THE DIRECTION OF THE SDP. PROVIDE BLOCKING FOR IPBs AS NECESSARY AND AS INDICATED IN THE DRAWINGS.

MARKERBOARDS AND TACKBOARDS SHALL BE SUPPLIED BY THE SDP AND INSTALLED BY THE CONTRACTOR. THE CONTRACTOR SHALL COORDINATE WITH OTHER PRIME CONTRACTORS AND FIELD VERIFY FOR THE BOARDS AND ADVISE SDP OF ANY DISCREPANCY OR INTERFERENCES AFFECTING THE DESIGN INTENT.

MARKERBOARD AND TACKBOARD INSERTS SHALL BE SUPPLIED AND INSTALLED BY THE CONTRACTOR

THE ABOVE CHANGES TO THE WALL EQUIPMENT SCHEDULE ARE SHOWN IN THE REVISED A300-Rev 1 DRAWING ISSUED WITH THIS ADDENDUM.

c. A300: CASEWORK DETAIL:

Delete "WALL CABINET, WALL HOOK, & CEILING HOOK" detail

Add "WALL CABINET & WALL HOOK DETAIL" shown on A300-Rev1 issued with this Addendum

THE ABOVE CHANGES TO THE CASEWORK DETAILS ARE SHOWN IN THE REVISED A300-Rev 1 DRAWING ISSUED WITH THIS ADDENDUM.

d. A302: INTERIOR ELEVATIONS

DETAILS 5, 7, 8 ARE REVISED, SEE A302 REV 1 ISSUED WITH THIS ADDENDUM.

2. Questions and Clarifications

.1 **Question:** Will another manufacture besides Campbell Rhea be accepted?

Response: Campbell Rhea is the Basis of Design manufacturer. Manufacturers providing equal products may be submitted for review

.2 **Question:** Can MBE/WBE requirements be reduced to a combined goal?

Response: A Combined 15/20% Goal is already provided in the Bidding Documents.

.3 **Question:** Please provide a spec for Electrostatic painting.

Response: Specification SECTION 105115: ELECTROSTATIC PAINTING is already included in the Technical Specifications

.4 **Question:** Spec 101100 Visual Display, 1.2.A, Markerboard and Tackboard infills by GC, plans say by SDP. Who is responsible for them?

Response: See Item 1(b) of this Addendum

.5 **Question:** Please confirm all visual display boards supplied by SDP will be delivered to each location by the SDP.

Response: Yes, Owner supplied visual display boards will be delivered to the school.

.6 **Question:** Reference spec. 101100; Owner supplied visual display units, par. 1.3 B .3 please provide manufacturers installation details

Response: Proceed on the basis that the Owner supplied visual display units are similar in type to those listed in specification section 10 1100 VISUAL DISPLAY UNITS and install in accordance with the manufacturer's instructions as described in the specifications.

.7 **Question:** Reference Supplementary Conditions section 16, photographs. Please consider deleting this section from scope of work as it does not seem appropriate or necessary for these type of projects.

Response: Already deleted by Section 01 1400 MODIFICATIONS TO THE GENERAL AND SUPPLEMENTARY CONDITIONS

END OF ADDENDUM NO. 1

Attachment(s)

**Drawing(s) – A300-Rev1
A302-Rev1**



CASEWORK SCHEDULE

Table with columns: Type Mark, Description, Model, Manufacturer, Width, Depth, Height, Count, Comments. Lists various casework items like coat hooks, student cubbies, wood base cabinets, ADA closure panels, and wood wall cases.

WALL EQUIPMENT SCHEDULE

Table with columns: Type Mark, Description, Width, Height, Count, Comments. Lists wall equipment items like interactive panel boards, markerboard inserts, tackboards, and tackboard inserts.

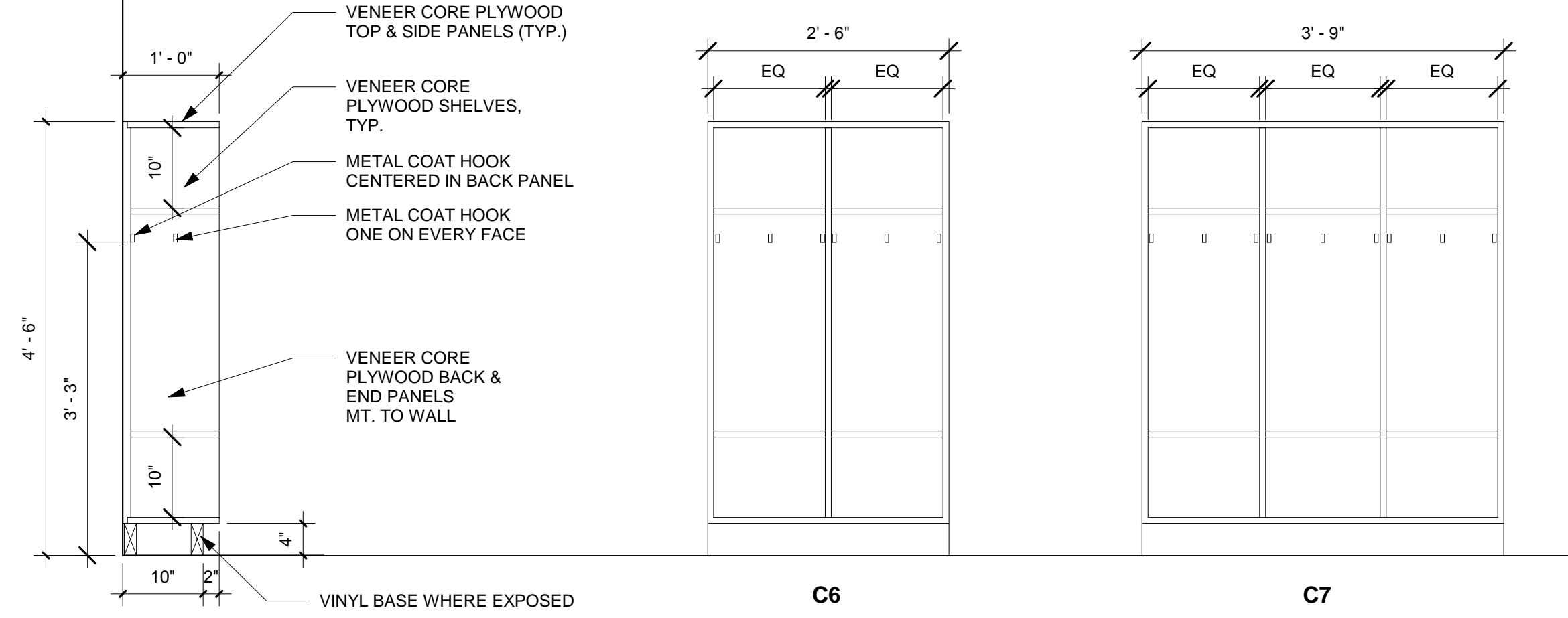
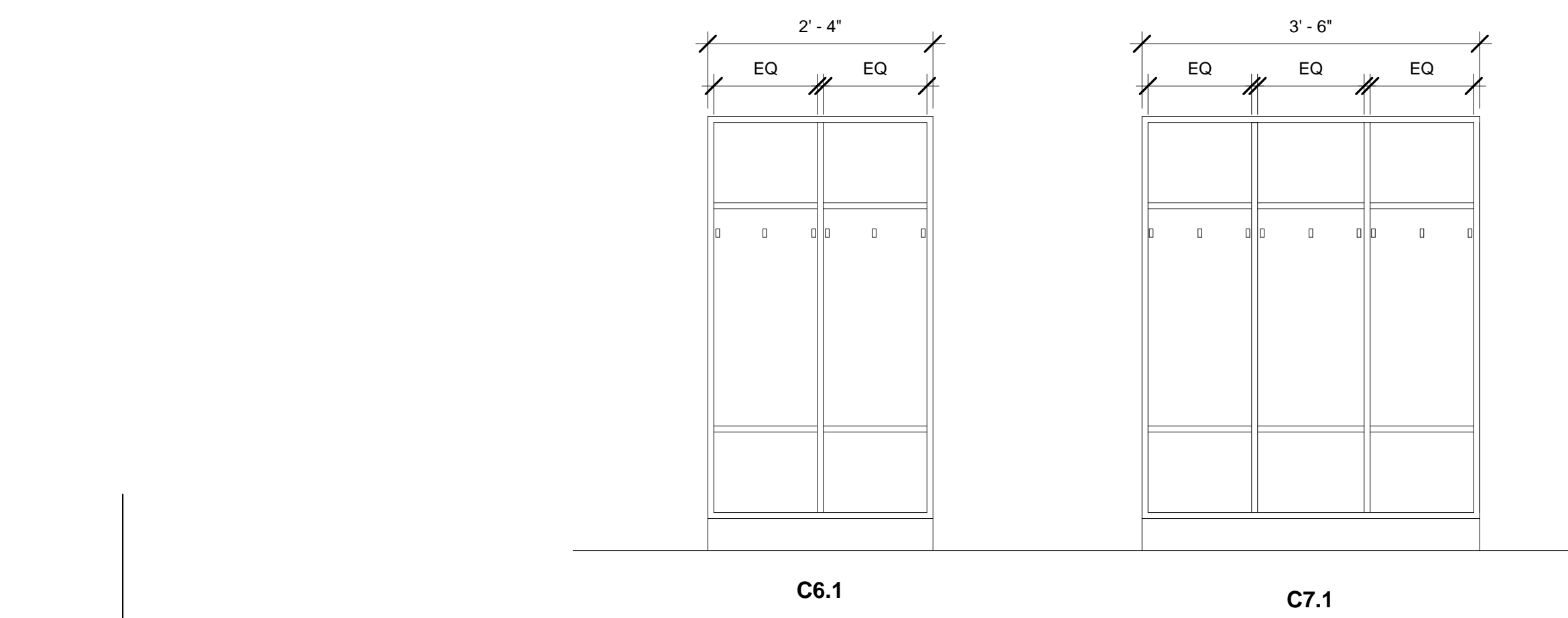
GENERAL NOTES

- 1. NEW/EXISTING INTERACTIVE PANEL BOARDS AND MOUNTING POSTS AND BRACKETS ARE PROVIDED BY OTHERS...
2. ALL DATA AND POWER CONDUIT AT TEACHING WALLS TO BE INSTALLED BELOW TEACHING WALL BOARDS...
3. SEE FINISH SCHEDULE FOR CASEWORK COLOR SELECTIONS.

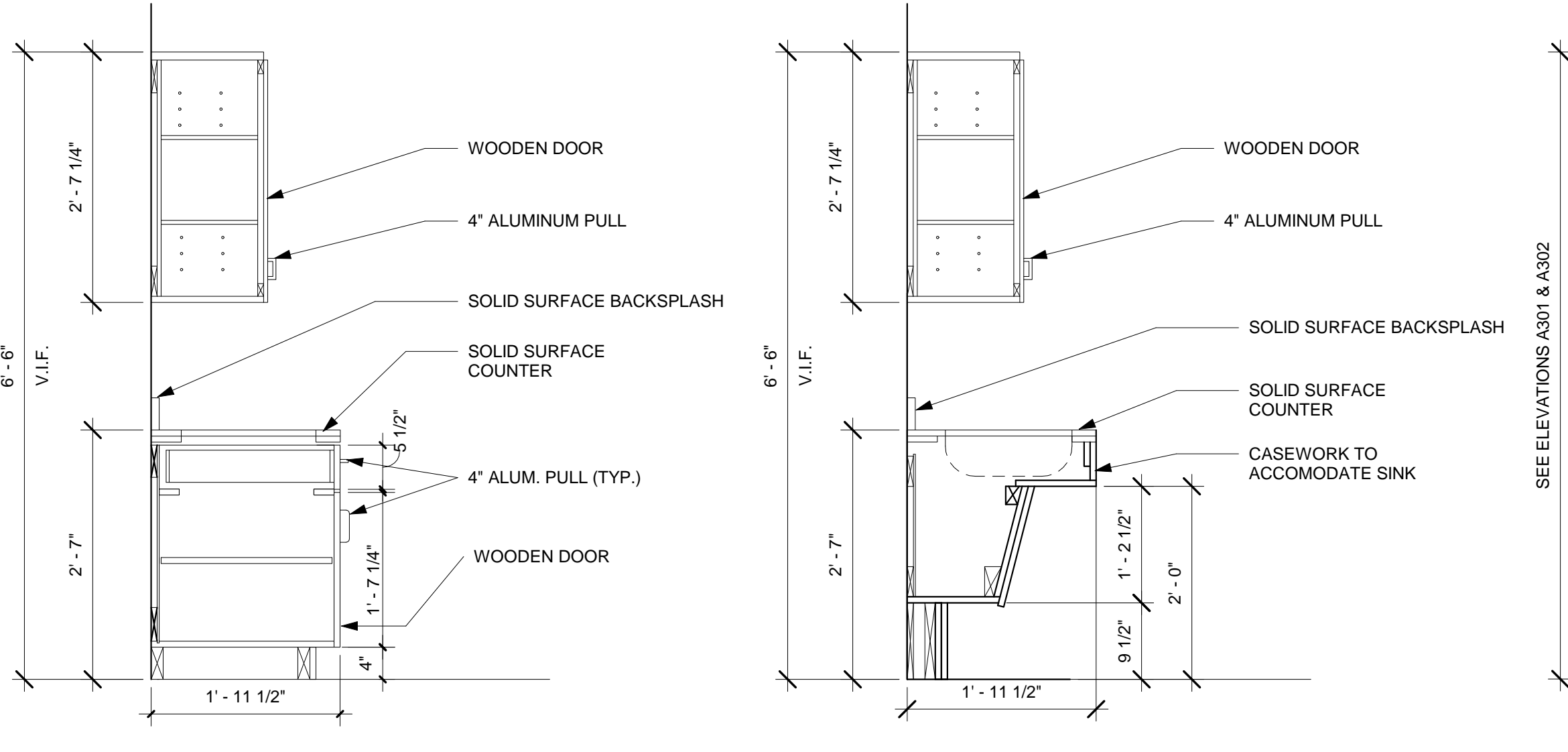
WALL EQUIPMENT NOTES

- 1. IPBs SHALL BE SUPPLIED AND INSTALLED BY OTHERS UNDER THE DIRECTION OF THE SDP...
2. MARKERBOARDS AND TACKBOARDS SHALL BE SUPPLIED BY THE SDP AND INSTALLED BY THE CONTRACTOR...
3. MARKERBOARDS AND TACKBOARD INSERTS SHALL BE SUPPLIED AND INSTALLED BY THE CONTRACTOR.

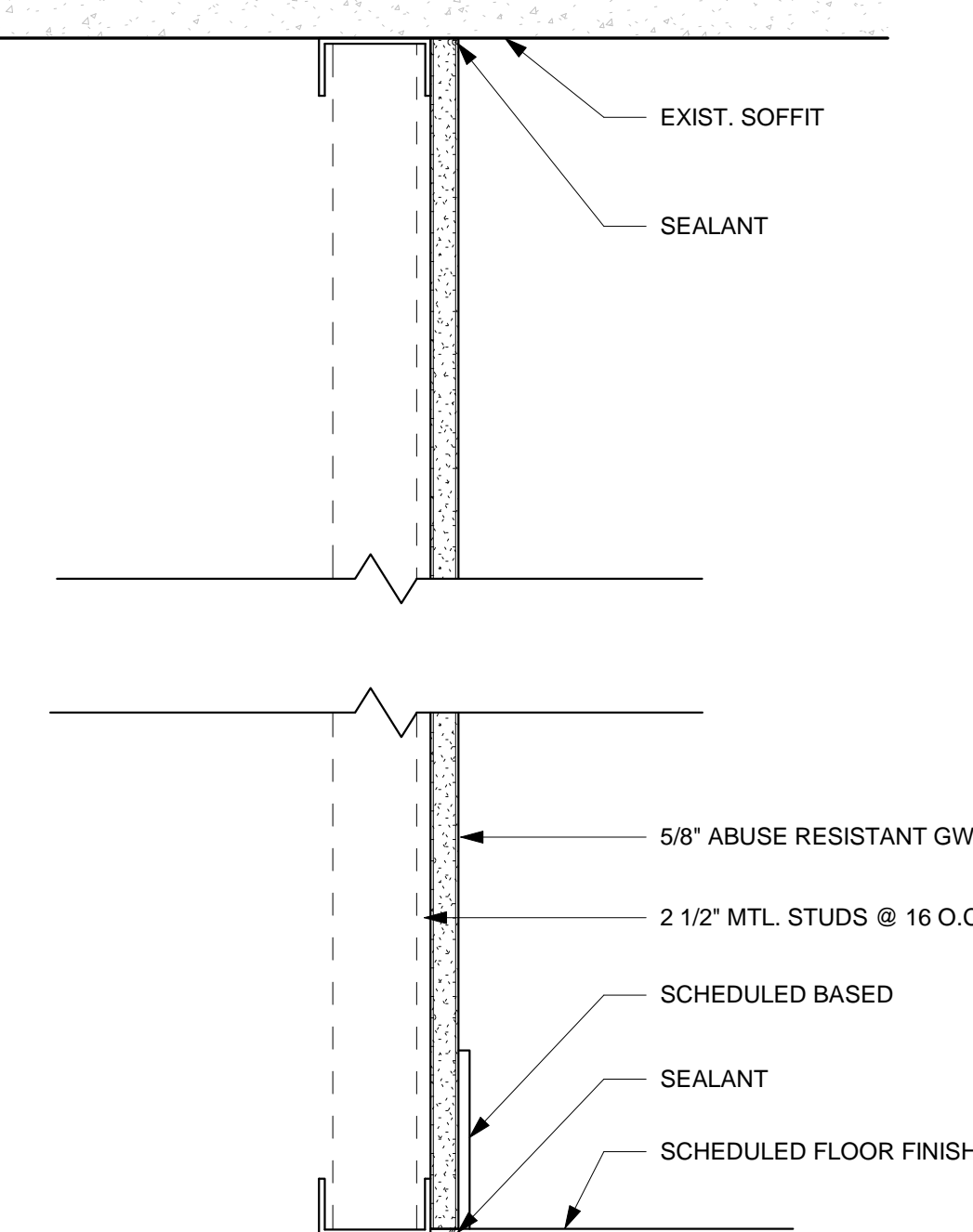
SPECIALTY EQUIPMENT SCHEDULE table with columns: Type Mark, Description, Count, Manufacturer, Comments. Lists hand sanitizer dispenser, soap dispenser, and towel dispenser.



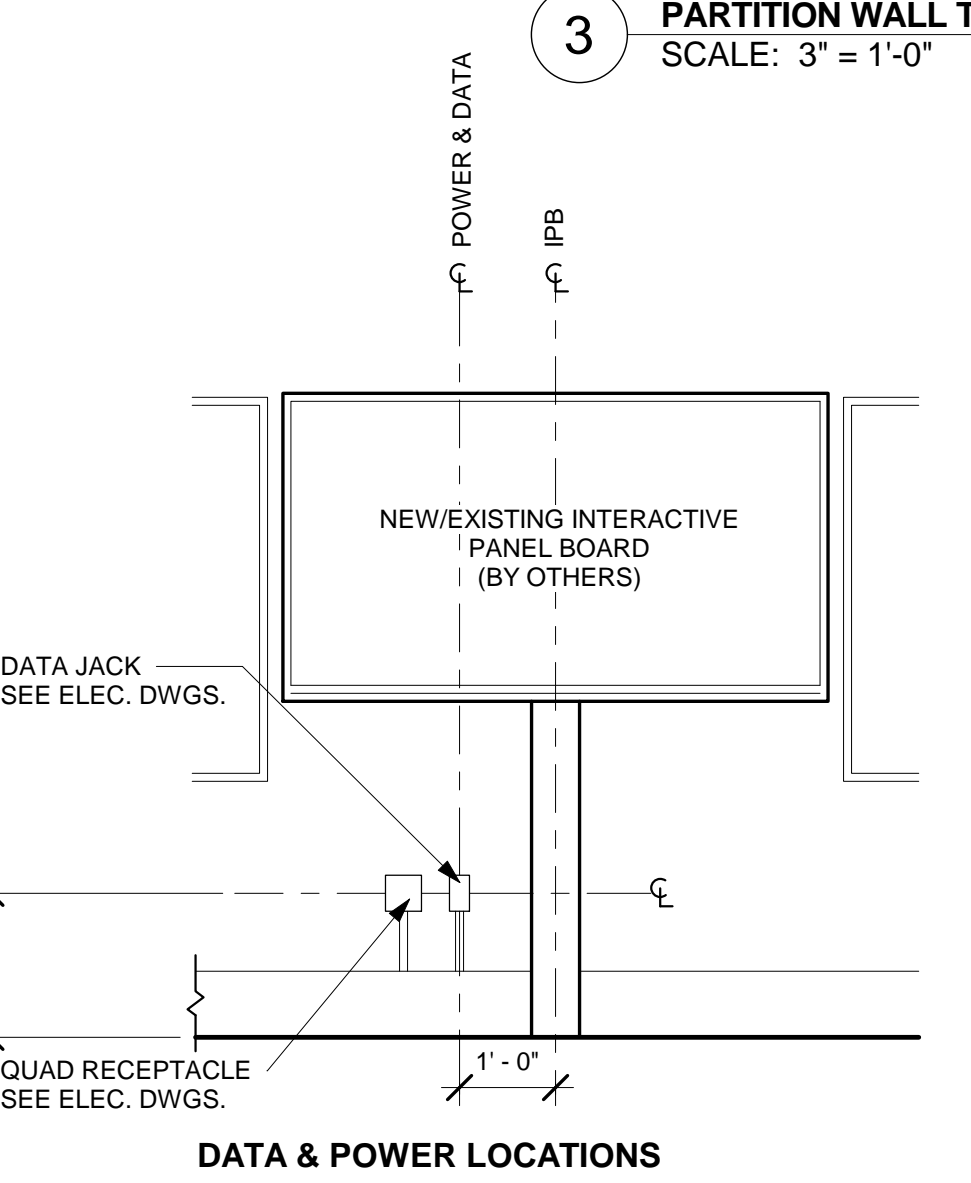
KINDERGARTEN STUDENT CUBBY C6, C7, C6.1, C7.1



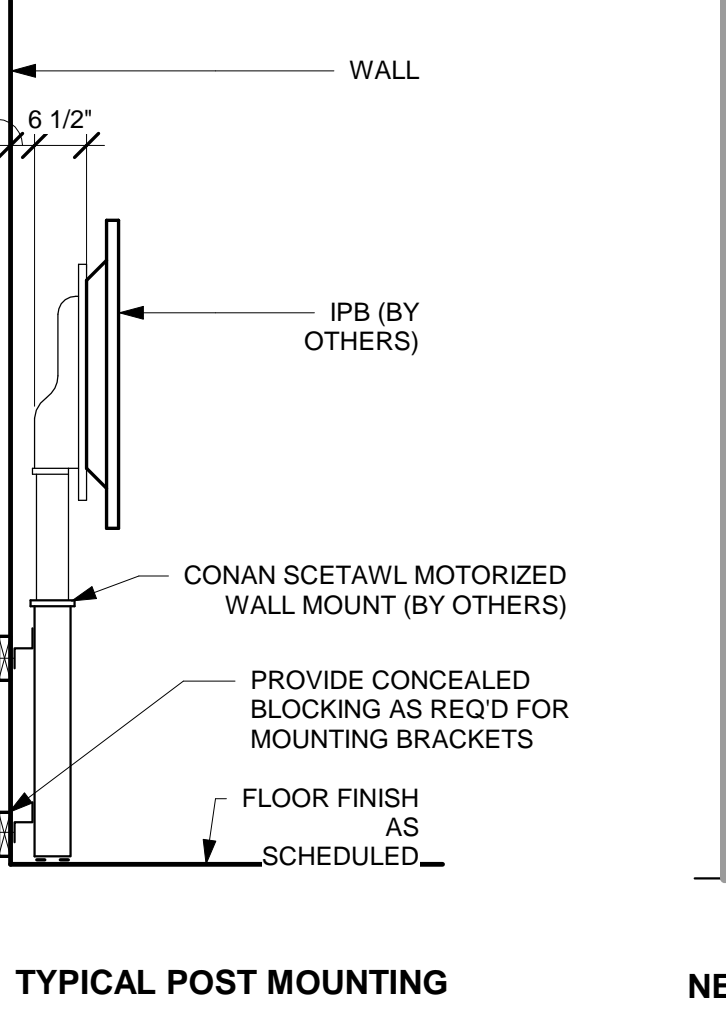
FIRST-THIRD GRADE BASE CABINET AND WALL CASE C6.1, CW1 CASEWORK DETAILS



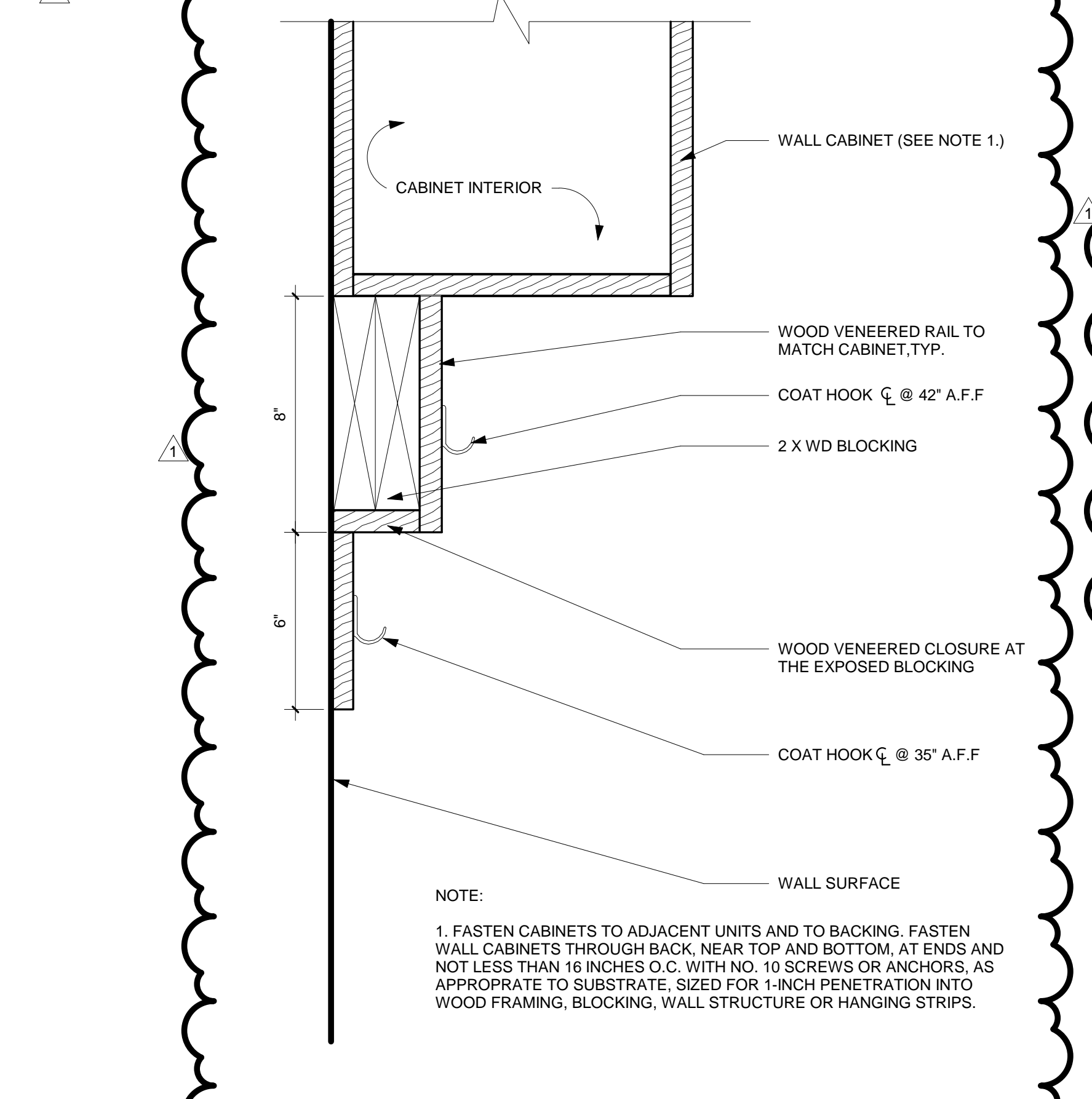
3 PARTITION WALL TYPES SCALE: 3\"/>



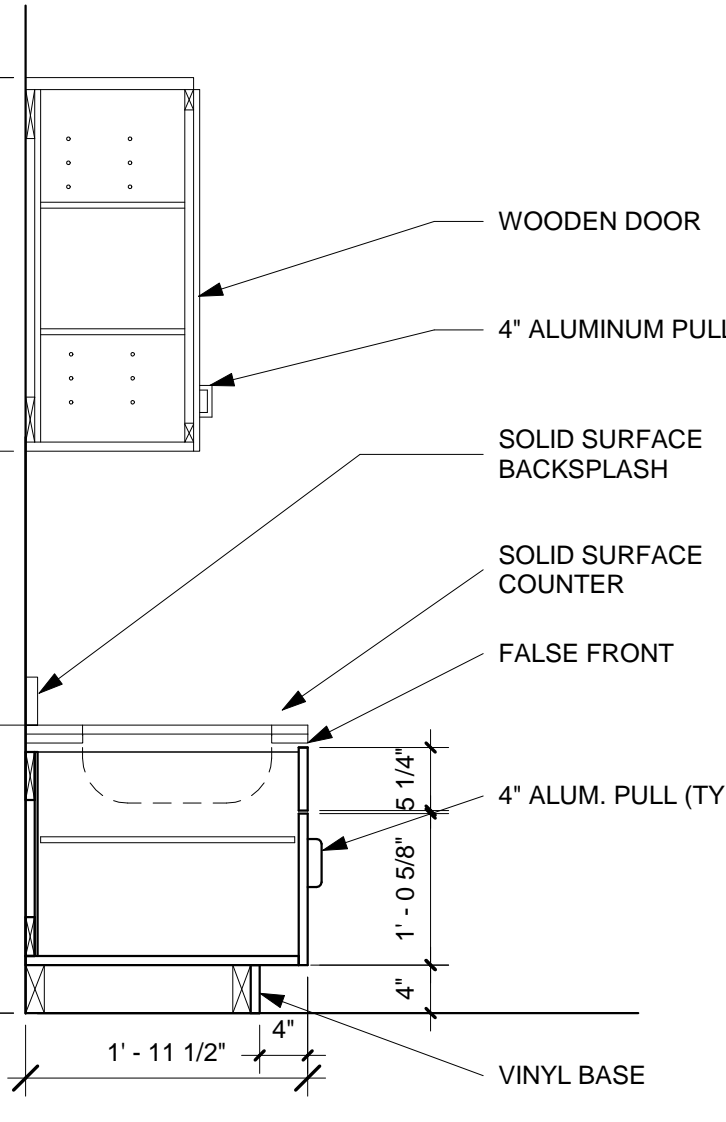
2 TYP. IPB DETAILS SCALE: 1/2\"/>



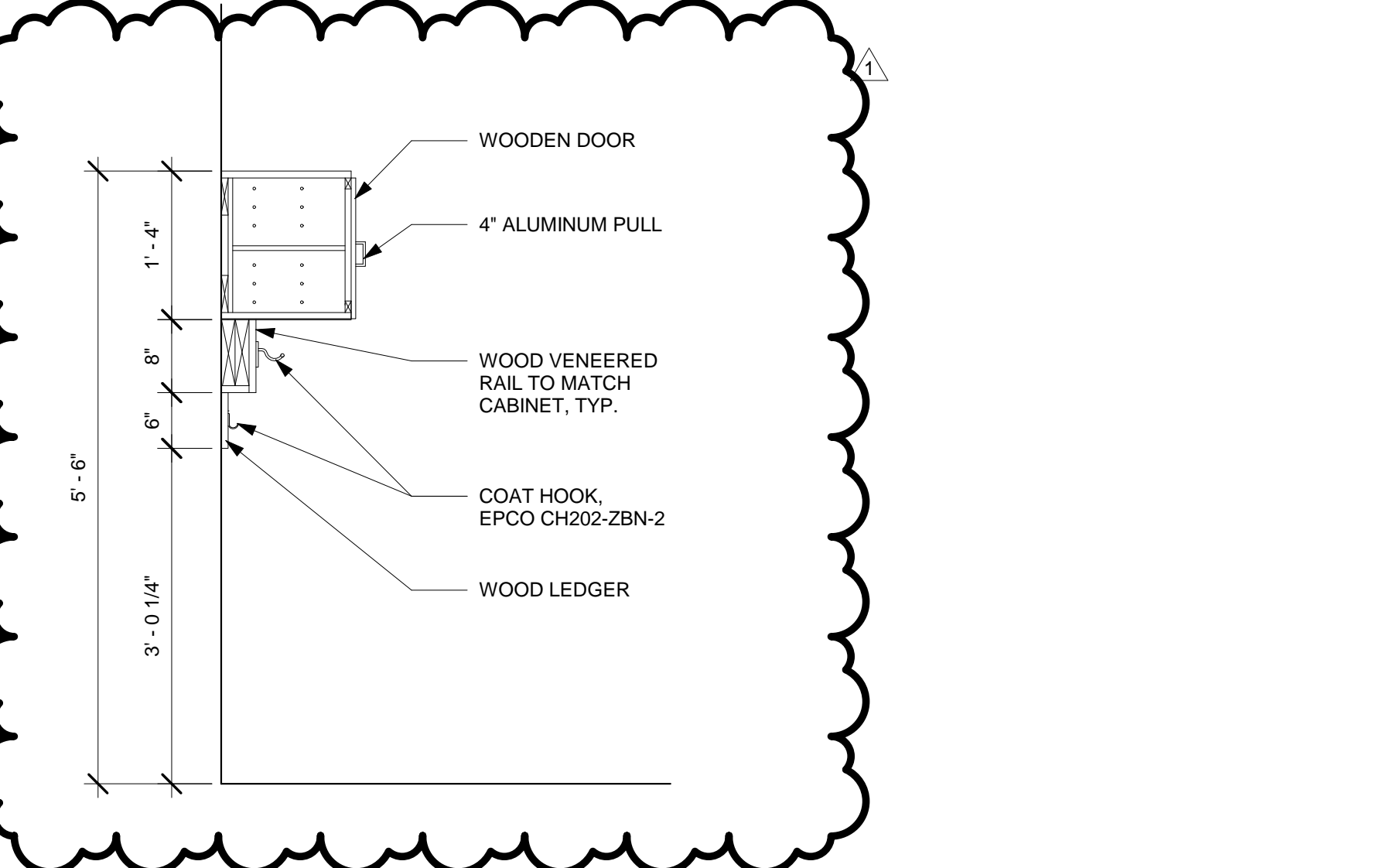
4 TYP. COAK HOOK DETAILS SCALE: 3\"/>



5 WALL CABINET AND WALL HOOK DETAIL ENLARGED SCALE: 3\"/>



KINDERGARTEN BASE CABINET AND WALL CASE CB1, CW1



WALL CABINET, COAT HOOK, & CEILING HOOK CW2, CW3, C5, C5.1

BID SET SUBMISSION JAN 16, 2019

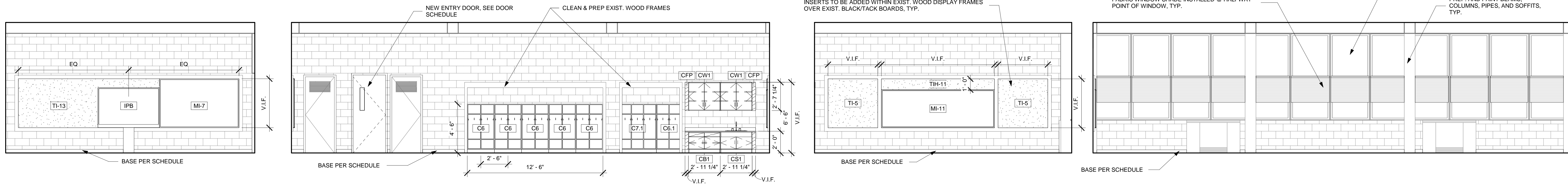
Revision table with columns: NO, DATE, REVISION. Shows revision 1 on 2/21/19.

SCHOOL & LOCATION FRANKLIN S. EDMONDS ELEMENTARY SCHOOL 8025 Thouron Ave., Philadelphia, PA 19150

PROJECT TITLE CLASSROOM MODERNIZATION DRAWING TITLE CASEWORK AND EQUIPMENT

Table with columns: DRAWING SCALE, LOCATION NO., FILE NO., DRAWN BY, CHECKED BY, and a grid for revision control.

A



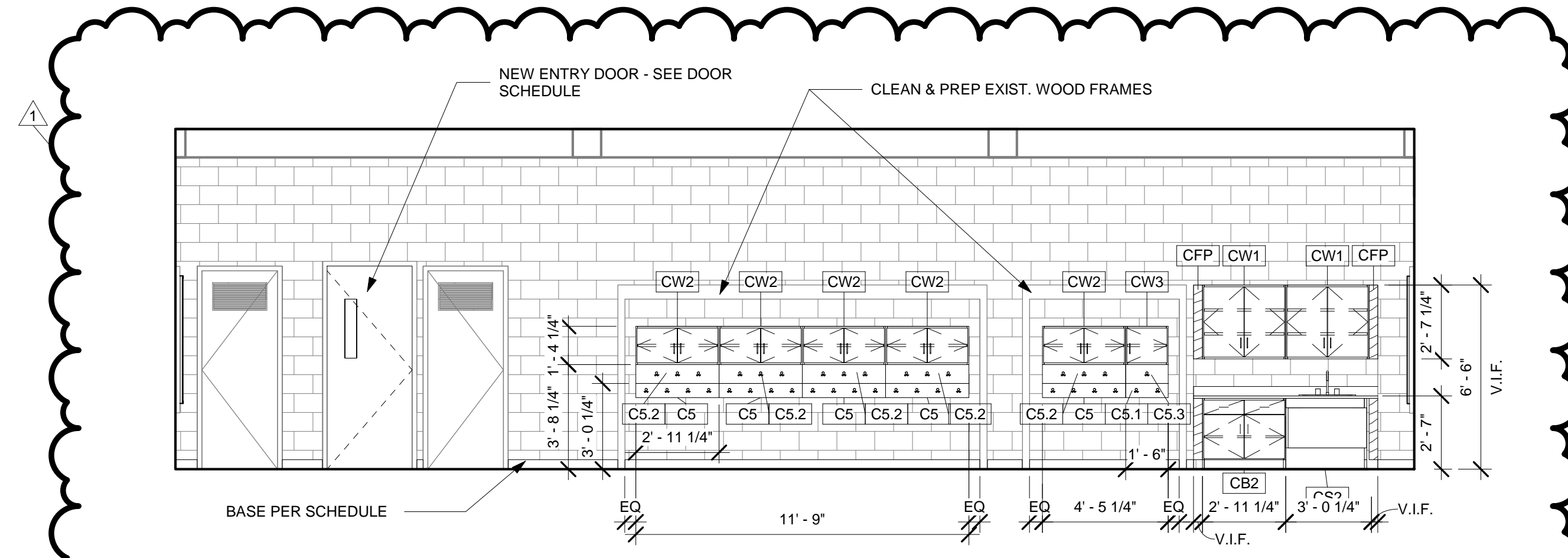
1 TYPICAL TEACHING WALL ELEVATION
SCALE: 1/4" = 1'-0"

2 TYPICAL ENTRY WALL ELEVATION - KINDERGARTEN RMS 102 104 106
SCALE: 1/4" = 1'-0"

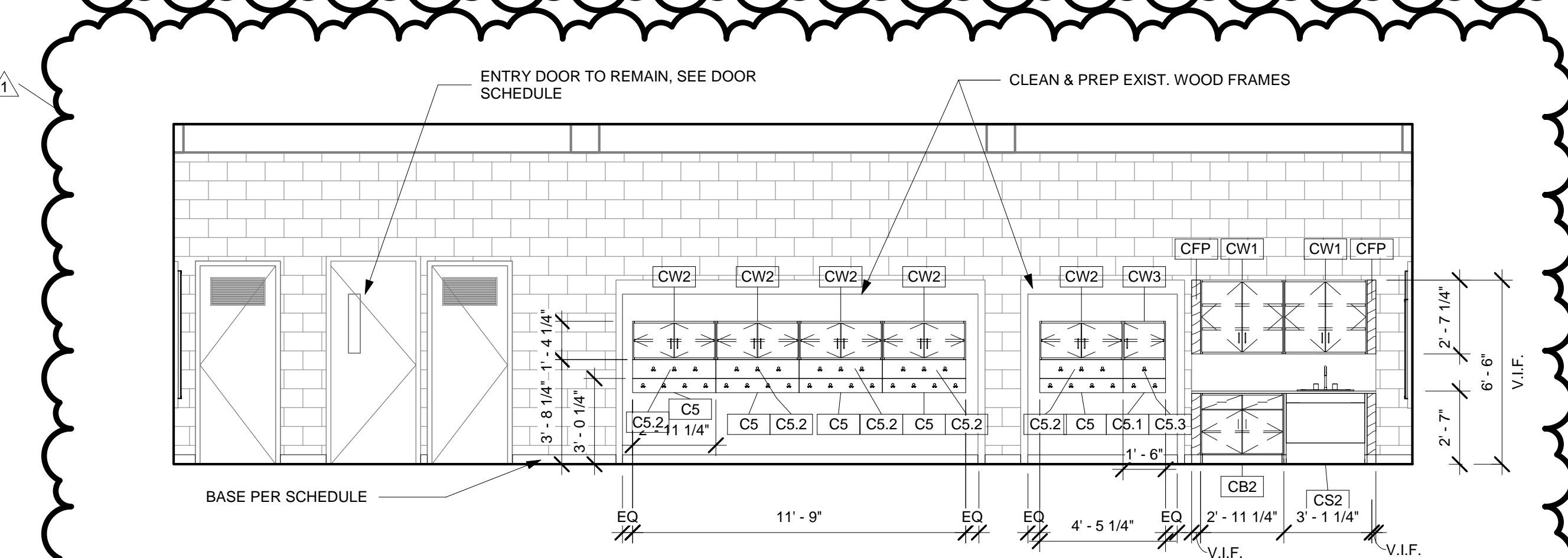
3 TYPICAL REAR WALL ELEVATION
SCALE: 1/4" = 1'-0"

4 TYPICAL WINDOW WALL ELEVATION
SCALE: 1/4" = 1'-0"

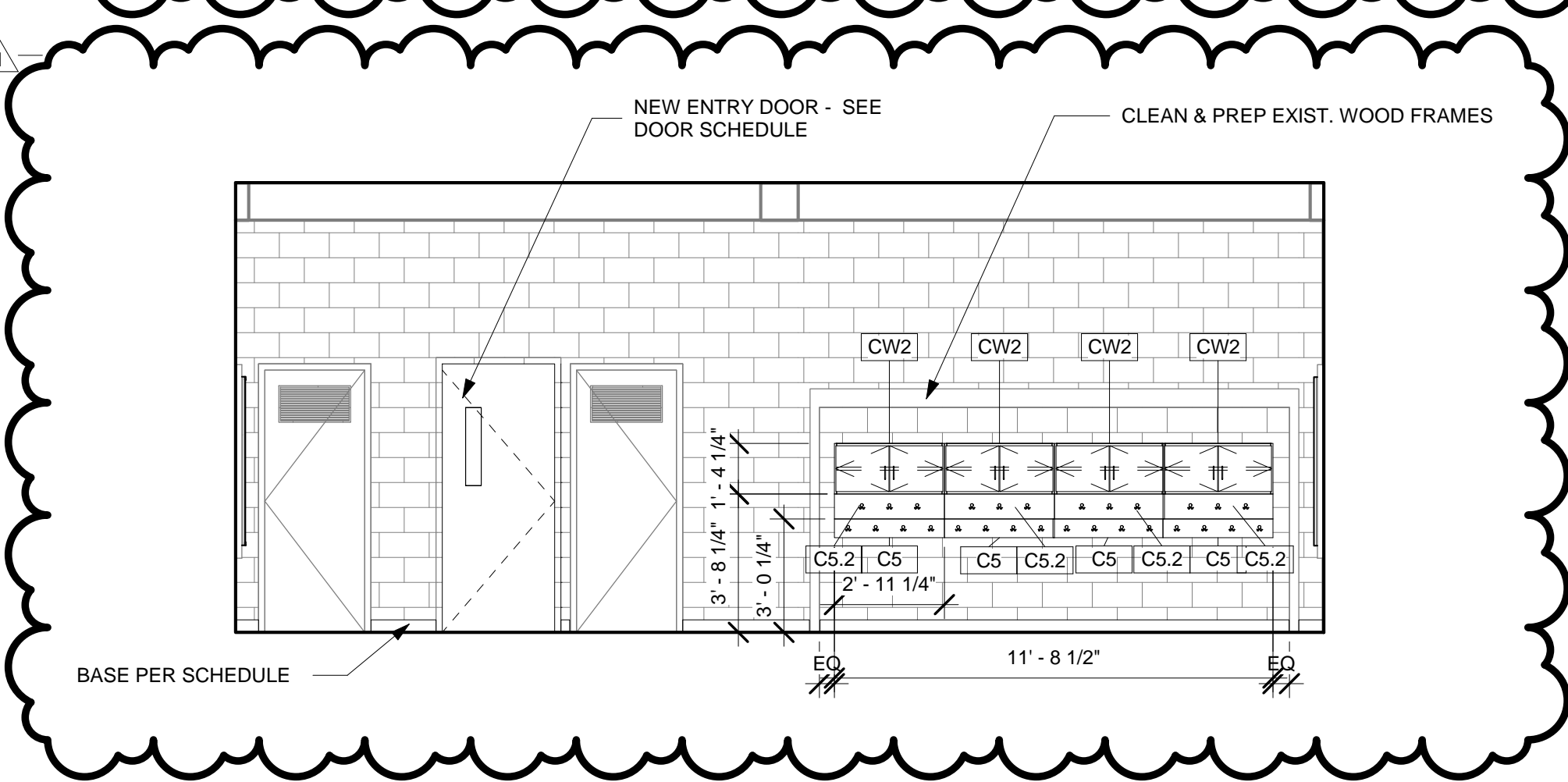
B



5 TYPICAL ENTRY WALL ELEVATION - FIRST-THIRD GRADE RMS 108 109 110
SCALE: 1/4" = 1'-0"

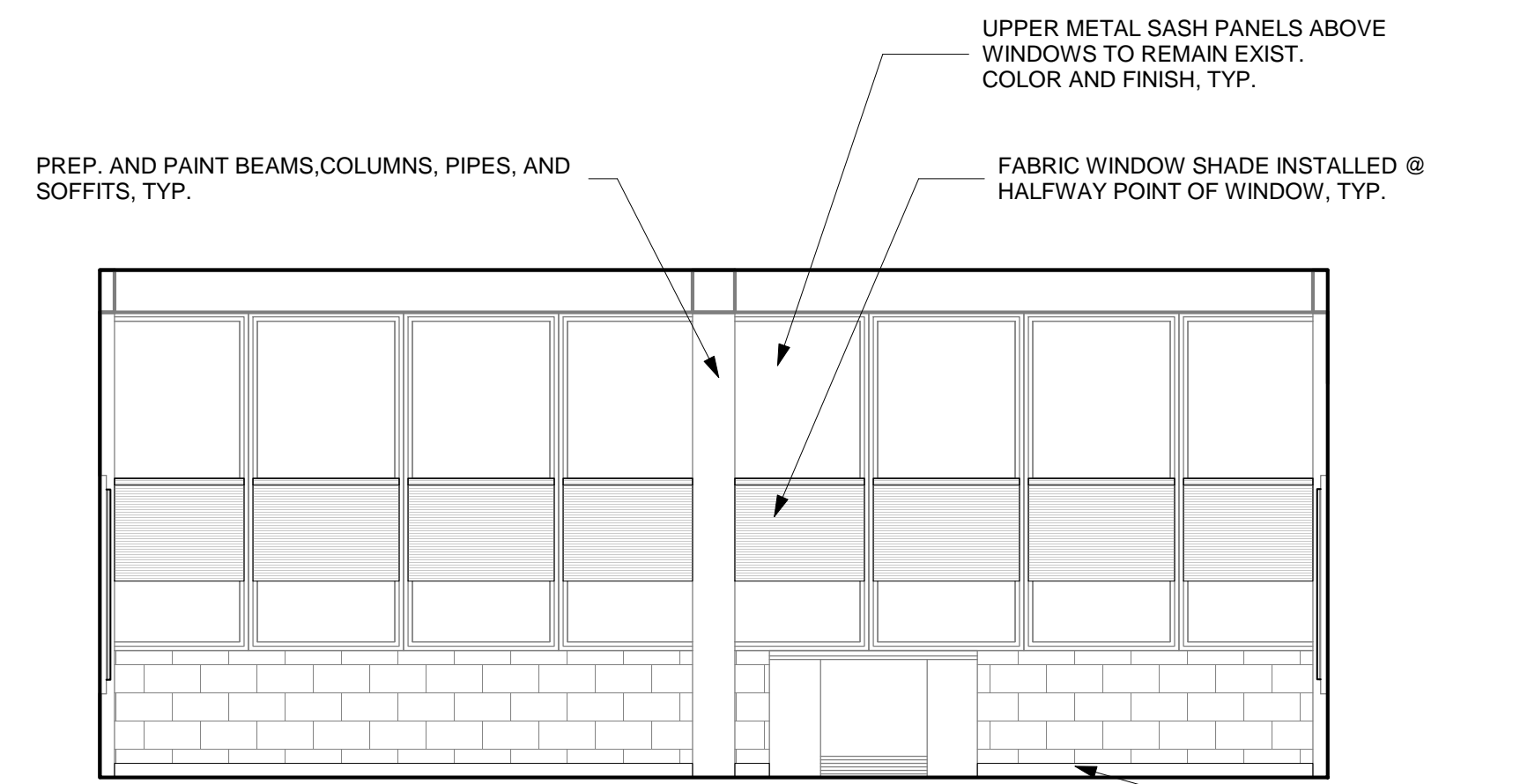


7 TYPICAL ENTRY WALL ELEVATION - FIRST-THIRD GRADES RM 201 202 203 204 205 206 210
SCALE: 1/4" = 1'-0"

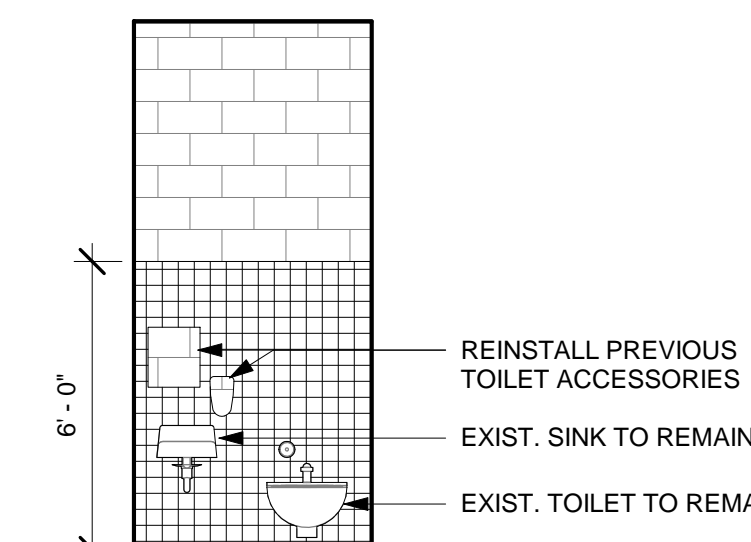


8 ENTRY WALL ELEVATION - 107
SCALE: 1/4" = 1'-0"

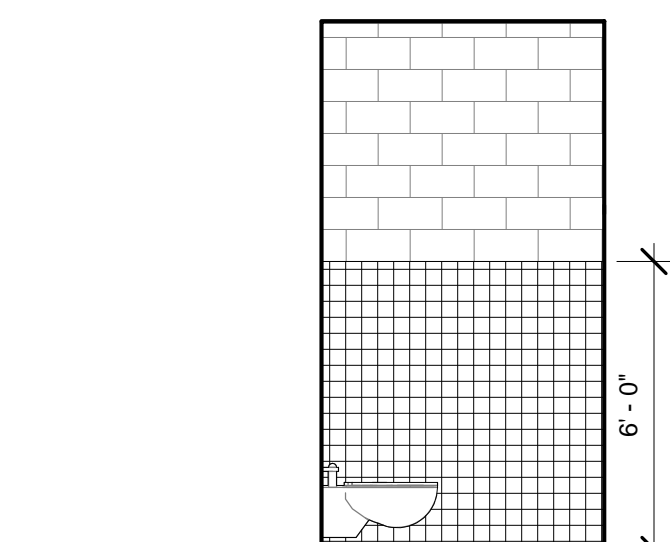
E



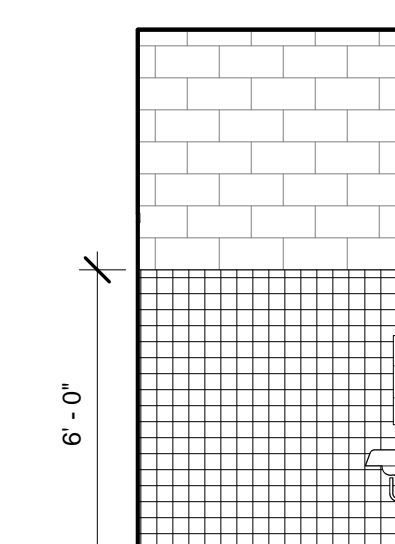
6 WINDOW WALL ELEVATION - 107
SCALE: 1/4" = 1'-0"



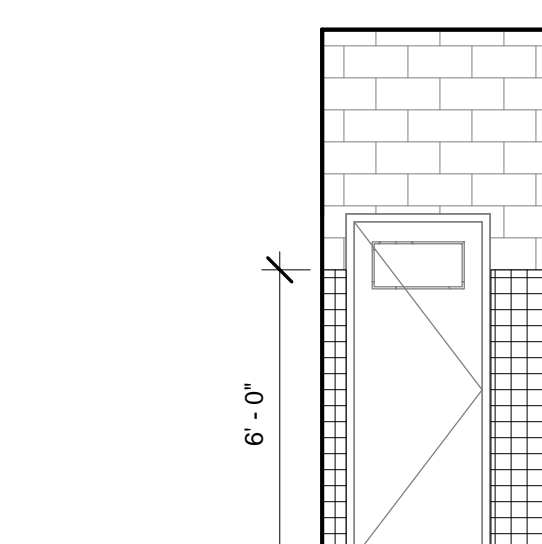
9 TOILET RM ELEVATION - 001B 001C 002B 002C
SCALE: 1/4" = 1'-0"



10 TOILET RM ELEVATION B - 001B 001C 002B 002C
SCALE: 1/4" = 1'-0"



11 TOILET RM ELEVATION C - 001B 001C 002B 002C
SCALE: 1/4" = 1'-0"



12 TOILET RM ELEVATION D - 001B 001C 002B 002C
SCALE: 1/4" = 1'-0"

F

SEAL:



NAME (LICENSED PROFESSIONAL) DATE
STATE AND LICENSE NO. XXX/XX/20XX

THE SHEWARD PARTNERSHIP, LLC
1.215.751.9301 2300 Chestnut Street
1.215.751.9302 Philadelphia, PA 19103



PRINCETON ENGINEERING SERVICES, PC
101 Morgan Lane - Suite 205, Plainboro, NJ 08536
t. 609.452.9700 www.princetonengineering.com

BID SET SUBMISSION JAN 16, 2019

10		
9		
8		
7		
6		
5		
4		
3		
2		
1	2/21/19	ADDENDUM 1
NO.	DATE	REVISION

SCHOOL & LOCATION
FRANKLIN S. EDMONDS
ELEMENTARY SCHOOL
8025 Thouron Ave.,
Philadelphia, PA 19150

PROJECT TITLE
CLASSROOM MODERNIZATION

DRAWING TITLE
INTERIOR ELEVATIONS

DRAWING SCALE AS INDICATED	
LOCATION NO. XXXX	FILE NO. XXX
DRAWN BY ACC	CHECKED BY GJC
GC: B-031C	OF 2018 / 19
PC: B-032C	OF 2018 / 19
EC: B-033C	OF 2018 / 19

DRAWING NO.
A302
SHEET 16 OF 32