

THE SCHOOL DISTRICT OF PHILADELPHIA
BOARD OF EDUCATION
Office of Capital Programs
440 North Broad Street, Third Floor - Suite 371
Philadelphia, PA 19130-4015

TELEPHONE: (215) 400-4730

Addendum No. 01

Subject: **Emlen Classroom Modernization Project
B-031C, B-032C, B-033C of 2018/19**

Location: **Eleanor C. Emlen Elementary School
6501 Chew Ave.,
Philadelphia, PA 19119**

This Addendum, ***dated February 26, 2019***, shall modify and become part of the Contract Documents for the work of this project. Any items not mentioned herein, or affected by, shall be performed strictly in accordance with the original documents.

1. Drawings and Specifications Revised by Narrative Note drawing text deletions are shown with ~~strikethrough~~, drawing text additions are shown in **bold**

- a. A300: CASEWORK SCHEDULE:

The Casework Schedule is revised as follows:

THE BASIS OF DESIGN CABINET SHALL BE CAMPBELL RHEA "EMPIRE" IN RED OAK FULL FLUSH OVERLAY WITH SOLID WOOD EDGING. DELETE REFERENCES TO "SIGNATURE" STYLE CABINETS IN MAPLE.

ADD TO SCHEDULE A TEACHER WARDROBE UNIT CABINET TYPE CT1 BASIS OF DESIGN CASEWORK MODEL No. 5866, 35-1/4" (W) x 84" (H) x 22-1/2" (D). PROVIDE 10 (TEN) CT1 CABINETS ONE PER IN-SCOPE CLASSROOM

THE ABOVE CHANGES TO THE CASEWORK SCHEDULE ARE SHOWN IN THE REVISED A300-Rev 1 DRAWING ISSUED WITH THIS ADDENDUM.

- b. A300: WALL EQUIPMENT SCHEDULE:

The Wall Equipment Schedule is revised as follows:

DELETE ALL THE NOTES UNDER THE "COMMENTS" COLUMN OF THE SCHEDULE.

Work in connection with Display Boards shall be conducted as follows:

IPBs SHALL BE SUPPLIED AND INSTALLED BY OTHERS UNDER THE DIRECTION OF THE SDP. PROVIDE BLOCKING FOR IPBs AS NECESSARY AND AS INDICATED IN THE DRAWINGS.

MARKERBOARDS AND TACKBOARDS SHALL BE SUPPLIED BY THE SDP AND INSTALLED BY THE CONTRACTOR. THE CONTRACTOR SHALL COORDINATE WITH OTHER PRIME CONTRACTORS AND FIELD VERIFY FOR THE BOARDS AND ADVISE SDP OF ANY DISCREPANCY OR INTERFERENCES AFFECTING THE DESIGN INTENT.

MARKERBOARD AND TACKBOARD INSERTS SHALL BE SUPPLIED AND INSTALLED BY THE CONTRACTOR

Delete the row reading

“ 5 WALL COAT HOOK 3'-0” 0'-8” 11 ”

THE ABOVE CHANGES TO THE WALL EQUIPMENT SCHEDULE ARE SHOWN IN THE REVISED A300-Rev 1 DRAWING ISSUED WITH THIS ADDENDUM.

d. A300: SPECIALTY EQUIPMENT SCHEDULE:

The Specialty Equipment Schedule is revised as follows:

VOLTAGES OF NEW EQUIPMENT SHALL BE 120V FOR REFRIGERATOR AND CABINET HOOD; 208V FOR RANGE.

Add CABINET HOOD ACCESSORY JXHC1 POWER CORD KIT

Add RANGE ACCESSORY POWER CORD AND PLUG

THE ABOVE CHANGES TO THE SPECIALTY EQUIPMENT SCHEDULE ARE SHOWN IN THE REVISED A300-Rev 1 DRAWING ISSUED WITH THIS ADDENDUM.

e. E001.0: ELECTRICAL COVER SHEET

For changes see drawing E001.0 Rev1 dated 2/22/19 as issued with this Addendum.

f. E100.0: BASEMENT ELECTRICAL PLAN

For changes see drawing E100.0 Rev1 dated 2/22/19 as issued with this Addendum.

g. E101.0: FIRST FLOOR POWER & SYSTEMS PLAN

For changes see drawing E101.0 Rev1 dated 2/22/19 as issued with this Addendum.

2. Questions and Clarifications

- .1 **Question:** Will another manufacture besides Campbell Rhea be accepted?

Response: Campbell Rhea is the Basis of Design manufacturer. Manufacturers providing equal products may be submitted for review

.2 Question: Can MBE/WBE requirements be reduced to a combined goal?

Response: Combined 15/20% Goal already included in the Bidding Documents.

.3 Question: Please provide a spec for Electrostatic painting.

Response: Specification SECTION 105115: ELECTROSTATIC PAINTING is already included in the Technical Specifications.

.4 Question: Spec 101100 Visual Display, 1.2.A, Markerboard and Tackboard infills by GC, plans say by SDP. Who is responsible for them?

Response: See Item 1(c) of this Addendum

.5 Question: Please confirm all visual display boards supplied by SDP will be delivered to each location by the SDP.

Response: Yes, Owner supplied visual display boards will be delivered to the school.

.6 Question: Reference spec. 101100; Owner supplied visual display units, par. 1.3 B .3 please provide manufacturers installation details

Response: Proceed on the basis that the Owner supplied visual display units are similar in type to those listed in specification section 10 1100 VISUAL DISPLAY UNITS and install in accordance with the manufacturer's instructions as described in the specifications.

.7 Question: Reference Supplementary Conditions section 16, photographs. Please consider deleting this section from scope of work as it does not seem appropriate or necessary for these type of projects.

Response: Already deleted by Section 01 1400 MODIFICATIONS TO THE GENERAL AND SUPPLEMENTARY CONDITIONS

END OF ADDENDUM NO. 1

Attachment(s)

**Drawings – A300-Rev1
E001.0-Rev1
E100.0-Rev1
E101.0-Rev1**

Type Mark	Description	Model	Manufacturer	Width	Depth	Height	Count	Comments
C6	Student Cubby	7434M	Institutional Casework Inc.	2' - 6"	1' - 0"	4' - 6"	21	M- See dwgs on A300. #5000 Red Oak
C7	Student Cubby	7442M	Institutional Casework Inc.	3' - 9"	1' - 0"	4' - 6"	8	M- See dwgs on A300. #5000 Red Oak
CB1	Wood Base Cabinet	3538	Institutional Casework Inc.	2' - 11 1/4"	1' - 10 1/2"	2' - 1"	3	Empire Maple, #5000 Red Oak
CB3	Wood Base Cabinet	3622M	Institutional Casework Inc.	1' - 2"	1' - 11 1/2"	2' - 9"	1	M-WIDTH=14", SEE DRG CB3 AT A300, Empire Maple, #5000 Red Oak
CS1	Wood Sink Base Cabinet	3542M	Institutional Casework Inc.	3' - 11 1/4"	1' - 10 1/2"	1' - 11"	1	M- Height 1' 11". See dwgs on A300, Empire Maple, #5000 Red Oak
CS2	Wood Sink Base Cabinet	3534	Institutional Casework Inc.	2' - 3"	1' - 10 1/2"	1' - 11"	2	M- Height 1' 11". See dwgs on A300, Empire Maple, #5000 Red Oak
CS3	ADA Closure Panel	8760	Institutional Casework Inc.	2' - 8"	1' - 11 1/2"	2' - 9"	2	M-HEIGHT 33"-CLEARANCE-30" TOTAL WIDTH=32". SEE DRG AT A300, Empire Maple, #5000 Red Oak
CW6	Wood Wall Case	4689M	Institutional Casework Inc.	2' - 0"	1' - 1"	1' - 6"	1	M- HEIGHT=18". SEE DRG CW6 AT A300, Empire Maple, #5000 Red Oak
CW7	Wood Wall Case	4695M	Institutional Casework Inc.	2' - 8"	1' - 1"	1' - 6"	1	M- HEIGHT=18", WIDTH=32". SEE DRG CW6 AT A300, Empire Maple, #5000 Red Oak
CW8	Wood Wall Case	4423M	Institutional Casework Inc.	1' - 2"	1' - 1"	2' - 6"	1	M-WIDTH=14", HEIGHT=30". SEE DRG CW8 AT A300, Empire Maple, #5000 Red Oak
CW9	Wood Wall Case	4719M	Institutional Casework Inc.	2' - 8"	1' - 1"	2' - 6"	1	M- HEIGHT=18", WIDTH=32". SEE DRG CW6 AT A300, Empire Maple, #5000 Red Oak
CHK	Coat Hooks for exist. rail	CH202	Engineered Products Co.	1"	1' - 1/8" projection	1' - 3/4" base	N/A	EPCO CH202-ZBN-2 Brushed Nickel finish. Count to match exist. quantity. V.I.F.

Type Mark	Description	Width	Height	Count	Comments
5	WALL COAT HOOK	3' - 0"	0' - 8"	11	
IPB	INTERACTIVE PANEL BOARD	3' - 8"	3' - 8"	11	SEE WALL EQUIPMENT NOTE 1
MB-6	MARKERBOARD - 6 FT LONG	6' - 0"	4' - 0"	3	SEE WALL EQUIPMENT NOTE 2
MI-7	MARKERBOARD INSERT	7' - 0"	4' - 10 1/4"	2	SEE WALL EQUIPMENT NOTE 3
MI-8	MARKERBOARD INSERT	8' - 0"	4' - 0 1/2"	2	SEE WALL EQUIPMENT NOTE 3
MI-10	MARKERBOARD INSERT	9' - 10"	4' - 0 1/2"	2	SEE WALL EQUIPMENT NOTE 3
MI-12	MARKERBOARD INSERT	13' - 8 3/4"	4' - 0 1/2"	4	SEE WALL EQUIPMENT NOTE 3
MI-15	MARKERBOARD INSERT	15' - 4"	4' - 0 1/2"	3	SEE WALL EQUIPMENT NOTE 3
MI-16	MARKERBOARD INSERT	16' - 0"	4' - 0 1/2"	1	SEE WALL EQUIPMENT NOTE 3
TB-4	TACKBOARD - 8 FT LONG	4' - 0"	4' - 0"	1	SEE WALL EQUIPMENT NOTE 2
TB-6	TACKBOARD - 6 FT LONG	6' - 0"	4' - 0"	1	SEE WALL EQUIPMENT NOTE 2
TB-8	TACKBOARD - 8 FT LONG	8' - 0"	4' - 0"	5	SEE WALL EQUIPMENT NOTE 2
TB-10	TACKBOARD - 8 FT LONG	10' - 0"	4' - 0"	2	SEE WALL EQUIPMENT NOTE 2
TB-12	TACKBOARD - 12 FT LONG	12' - 0"	4' - 0"	1	SEE WALL EQUIPMENT NOTE 2
TH-20	TACKBOARD HEADER - 20 FT LONG	20' - 0"	1' - 4"	3	SEE WALL EQUIPMENT NOTE 2
TI-2	TACKBOARD INSERT	2' - 0"	4' - 0 1/2"	13	SEE WALL EQUIPMENT NOTE 3
TI-4	TACKBOARD INSERT			20	SEE WALL EQUIPMENT NOTE 3
TI-4.6H	TACKBOARD INSERT	4' - 6 29/32"	1' - 0"	3	SEE WALL EQUIPMENT NOTE 3
TI-4H	TACKBOARD INSERT		1' - 0"	20	SEE WALL EQUIPMENT NOTE 3
TI-5	TACKBOARD INSERT	4' - 9"	4' - 0 1/2"	2	SEE WALL EQUIPMENT NOTE 3
TI-5.3H	TACKBOARD INSERT	5' - 3"	1' - 0"	6	SEE WALL EQUIPMENT NOTE 3
TI-5.6H	TACKBOARD INSERT	5' - 6"	1' - 0"	3	SEE WALL EQUIPMENT NOTE 3
TI-5.11H	TACKBOARD INSERT	5' - 11"	1' - 0"	8	SEE WALL EQUIPMENT NOTE 3
TI-6H	TACKBOARD INSERT	1' - 0"	1' - 0"	16	SEE WALL EQUIPMENT NOTE 3
TI-8	TACKBOARD INSERT	8' - 0"	4' - 0 1/2"	1	SEE WALL EQUIPMENT NOTE 3
TI-11H	TACKBOARD INSERT	11' - 0"	1' - 0"	1	SEE WALL EQUIPMENT NOTE 3
TI-12	TACKBOARD INSERT	12' - 0"	4' - 0 1/2"	6	SEE WALL EQUIPMENT NOTE 3
TI-12H	TACKBOARD INSERT	12' - 0"	1' - 0"	1	SEE WALL EQUIPMENT NOTE 3
TI-14	TACKBOARD INSERT	14' - 0"	4' - 0 1/2"	1	SEE WALL EQUIPMENT NOTE 3
TI-20	TACKBOARD INSERT	19' - 8 1/4"	4' - 0 1/2"	1	SEE WALL EQUIPMENT NOTE 3

GENERAL NOTES

- NEW/EXISTING INTERACTIVE PANEL BOARDS AND MOUNTING POSTS AND BRACKETS ARE PROVIDED BY OTHERS. INSTALLATION OF INTERACTIVE PANEL BOARDS AND MOUNTING HARDWARE IS BY OTHERS.
- ALL DATA AND POWER CONDUIT AT TEACHING WALLS TO BE INSTALLED BELOW TEACHING WALL BOARDS. DO NOT RUN VERTICAL CONDUIT BEHIND IPB. COORDINATE W/ ELECTRICAL DWGS.
- SEE FINISH SCHEDULE FOR CASEWORK COLOR SELECTIONS.

THE SCHOOL DISTRICT OF PHILADELPHIA
OFFICE OF CAPITAL PROGRAMS
440 NORTH BROAD STREET
PHILADELPHIA, PA 19130 - 4015
(215) 400 - 4730 | (215) 400 - 4731 (fax)
www.philasd.org

SEAL:

NAME (LICENSED PROFESSIONAL) DATE
STATE AND LICENSE NO. XXX/XX/20XX

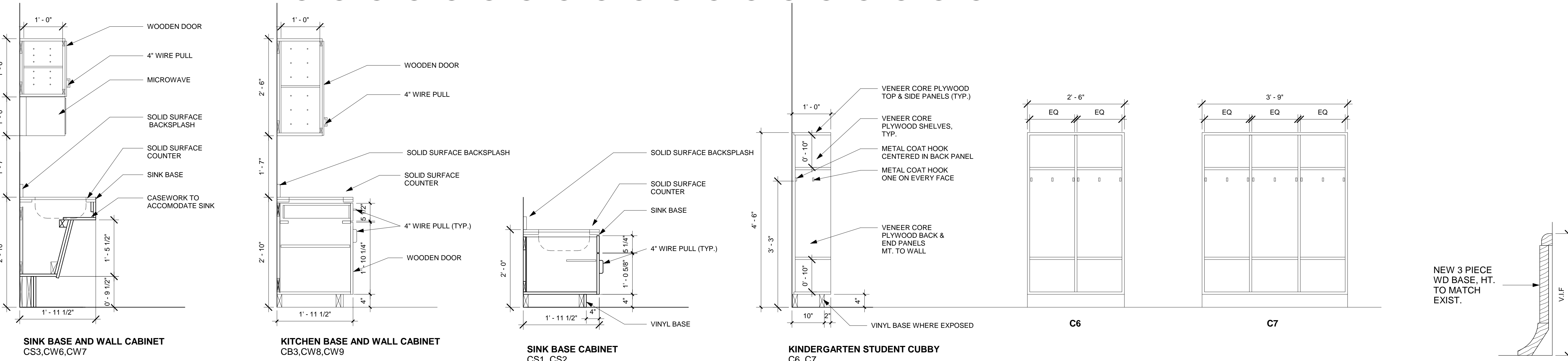
Type Mark	Description	Count	Manufacturer	Comments
E1	HAND SANITIZER DISPENSER	11	--	EXISTING TO BE REINSTALLED
F1	REFRIGERATOR	1	LG	11 CU.FT. , 24" WIDE COMPACT TOP MOUNT REFRIGERATOR, LTNC11121V
H1	CABINET HOOD	1	GE Appliances	24" UNDER THE CABINET HOOD, 120V WITH JXHC1 POWER CORD KIT, JX3240SJSS
M1	MICROWAVE	1	GE Appliances	GE PROFILE SERIES 1.1 CU.FT COUNTERTOP MICROWAVE OVEN PEM31SFSS, PROVIDE AN UNDERCABINET HANGING KIT JXA019K
R1	ELECTRIC RANGE	1	GE Appliances	24" STANDARD CLEAN FREE STANDING ELECTRIC RANGE, JAS640RMS5, 208V WITH POWER CORD AND PLUG
T2	SOAP DISPENSER	5	--	EXISTING TO BE REINSTALLED
T3	TOWEL DISPENSER	10	--	EXISTING TO BE REINSTALLED

WALL EQUIPMENT NOTES

- IPBs SHALL BE SUPPLIED AND INSTALLED BY OTHERS UNDER THE DIRECTION OF THE SDP. PROVIDE BLOCKING FOR IPBS AS NECESSARY AND AS INDICATED IN THE DRAWINGS.
- MARKERBOARDS AND TACKBOARDS SHALL BE SUPPLIED BY THE SDP AND INSTALLED BY THE CONTRACTOR. THE CONTRACTOR SHALL COORDINATE WITH OTHER PRIME CONTRACTORS AND FIELD VERIFY FOR THE BOARDS AND ADVISE SDP OF ANY DISCREPANCY OR INTERFERENCES AFFECTING THE DESIGN INTENT.
- MARKERBOARDS AND TACKBOARD INSERTS SHALL BE SUPPLIED AND INSTALLED BY THE CONTRACTOR

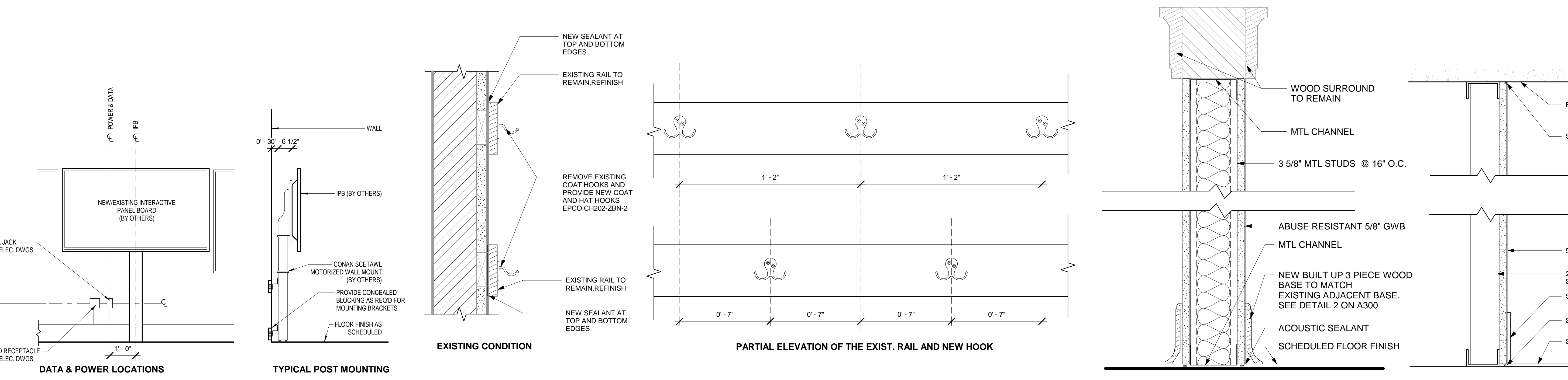
THE SHEWARD PARTNERSHIP, LLC
1-215-751-9301 2300 Chestnut Street
1-215-751-9302 Philadelphia, PA 19103

PRINCETON ENGINEERING SERVICES, PC
201 Morgan Lane - Suite 205, Plainsboro, NJ 08536
609.452.9700 www.princetonengineering.com



1 TYPICAL CASEWORK SECTIONS
SCALE: 3/4" = 1'-0"

2 BASE DETAIL
SCALE: 6" = 1'-0"



3 TEACHING WALL IPB DETAIL
SCALE: 1/2" = 1'-0"

4 TYP. REFURBISH COAT HOOK DTL.
SCALE: 3" = 1'-0"

5 WALL PARTITION TYPES
SCALE: 3" = 1'-0"

BID SUBMISSION: JANUARY 16, 2019

10		
9		
8		
7		
6		
5		
4		
3		
2		
1	2/21/19	ADDENDUM 1
NO.	DATE	REVISION

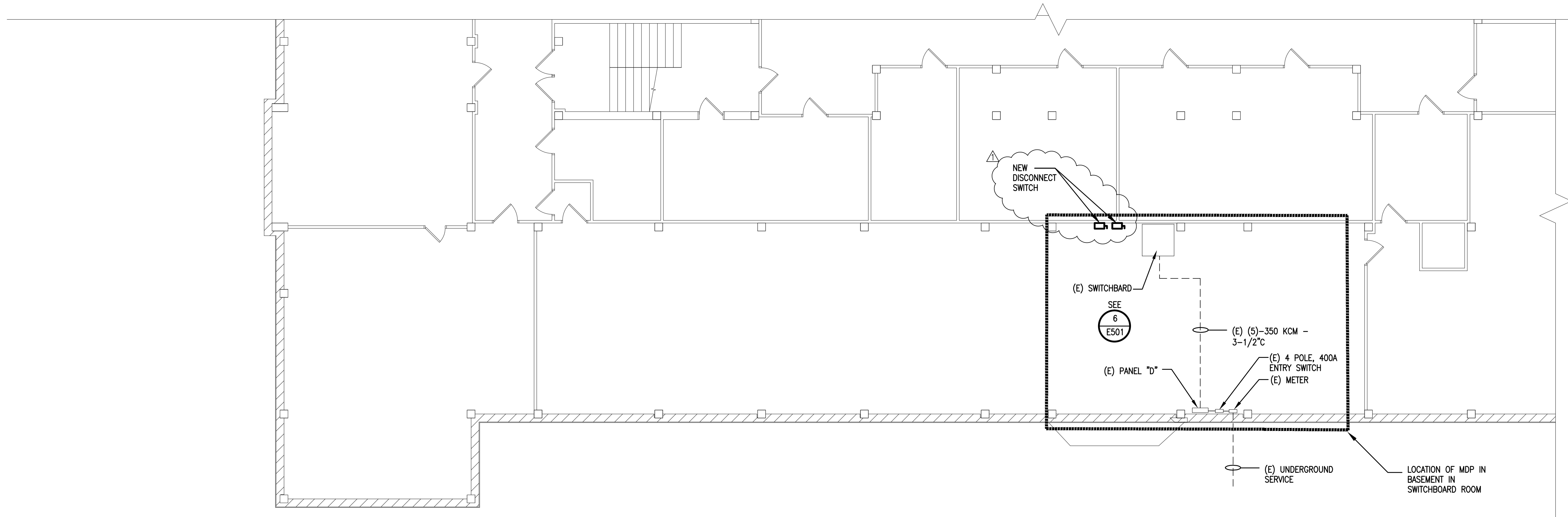
SCHOOL & LOCATION
**ELEANOR C. EMLEN
ELEMENTARY SCHOOL**
6501 Chew Ave.,
Philadelphia, PA 19119

PROJECT TITLE
CLASSROOM MODERNIZATION

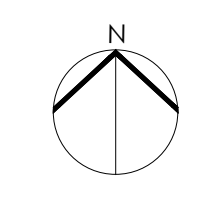
DRAWING TITLE
CASEWORK AND EQUIPMENT

DRAWING SCALE AS INDICATED	FILE NO. XXX
LOCATION NO. XXXX	CHECKED BY GJC
DRAWN BY ACC	DATE 2018 / 19
GC: B-029 C	OF 2018 / 19
EC: B-030 C	OF 2018 / 19

DRAWING NO.
A300
SHEET 10 OF 28



1 BASEMENT ELECTRICAL PLAN
E100 SCALE: 1/8" = 1'-0"



SEAL:

SANJEEV AGARWAL, P.E.
PA PE0270557 DATE
1/16/2019

THE SHEWARD PARTNERSHIP, LLC
www.theshewardpartnership.com
t. 215.751.9301 f. 215.751.9302 2300 Chestnut Street Philadelphia, PA 19103

PES
PRINCETON ENGINEERING SERVICES, PC
101 Morgan Lane - Suite 205, Plainsboro, NJ 08856
t. 609.452.9700 www.princetonengineering.services

BID SUBMISSION
JANUARY 16, 2019

10		
9		
8		
7		
6		
5		
4		
3		
2		
1	2/22/19	ADDENDUM 1
NO.	DATE	REVISION

SCHOOL & LOCATION
Eleanor C. Emlen School
6501 Chew Avenue,
Philadelphia PA, 19119

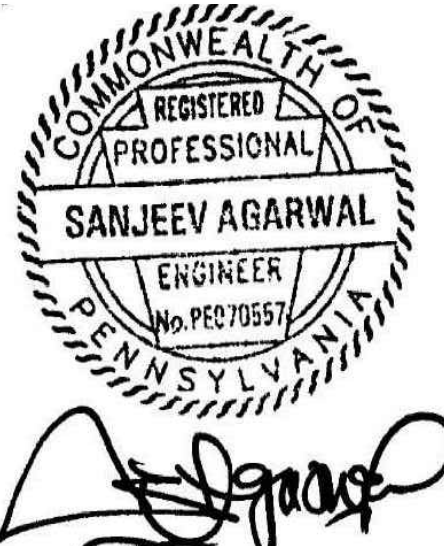
PROJECT TITLE
CLASSROOM MODERNIZATION

DRAWING TITLE
BASEMENT ELECTRICAL PLAN

DRAWING SCALE AS INDICATED			
LOCATION NO. XXXX	FILE NO. XXX		
DRAWN BY NG	CHECKED BY SA		
GC B-029 C	OF 2018 / 19		
EC B-030 C	OF 2018 / 19		

DRAWING NO.
E - 100.0
SHEET 21 OF 29

SEAL:

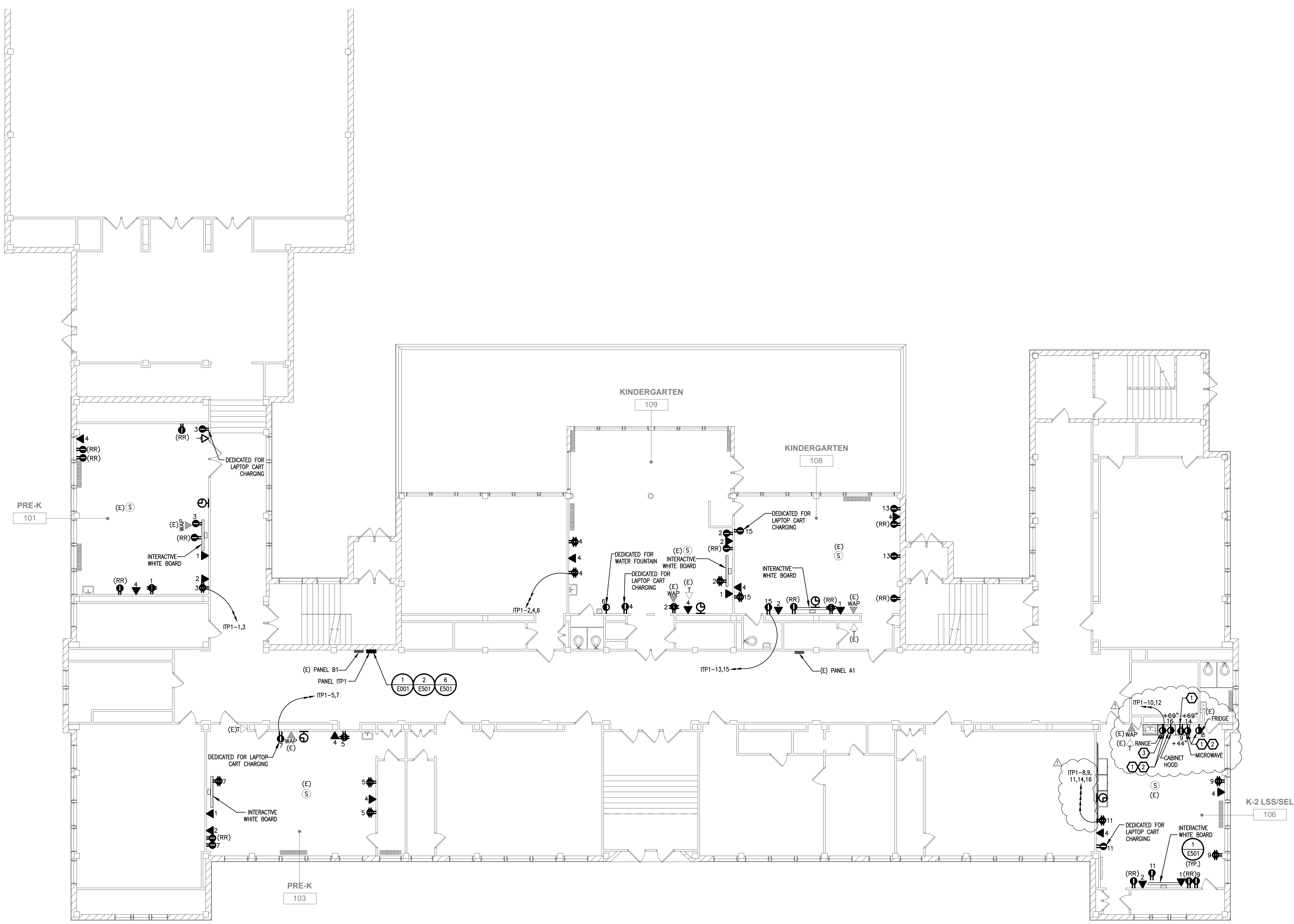


SANJEEV AGARWAL, P.E.
PA PE270557 DATE 1/16/2019

THE SHEWARD PARTNERSHIP, LLC
www.the-sheward-partnership.com
t. 215.751.9301 f. 215.751.9302 2300 Chestnut Street Philadelphia, PA 19103



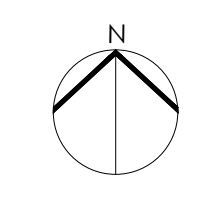
PRINCETON ENGINEERING SERVICES, PC
101 Morgan Lane - Suite 205, Plainsboro, NJ 08536
t. 609.452.9700 www.princetonengineering.com



1 FIRST FLOOR POWER & SYSTEMS PLAN
SCALE: 1/8" = 1'-0"

ELECTRICAL KEY NOTES

- 1 COORDINATE POWER AND WIRING REQUIREMENTS WITH MANUFACTURER'S RECOMMENDATIONS.
- 2 COORDINATE LOCATION OF RECEPTACLE IN FIELD.
- 3 RECEPTACLE SHALL BE SUITABLE FOR 50A, 125/250V, 3 POLE, 4 WIRE, GROUNDING NEMA 14-50R.



BID SUBMISSION
JANUARY 16, 2019

10	
9	
8	
7	
6	
5	
4	
3	
2	

NO.	DATE	REVISION
1	2/22/19	ADDENDUM 1

SCHOOL & LOCATION
Eleanor C. Emien School
6501 Chew Avenue,
Philadelphia PA, 19119

PROJECT TITLE
CLASSROOM MODERNIZATION

DRAWING TITLE
FIRST FLOOR POWER & SYSTEMS PLAN

DRAWING SCALE AS INDICATED	
LOCATION NO. XXXX	FILE NO. XXX
DRAWN BY NG	CHECKED BY SA
GC B-029 C OF 2018 / 19	EC B-030 C OF 2018 / 19

DRAWING NO.
E - 101.0
SHEET 22 OF 29