

THE SCHOOL DISTRICT OF PHILADELPHIA
BOARD OF EDUCATION
Office of Capital Programs
440 North Broad Street, Third Floor - Suite 371
Philadelphia, PA 19130-4015

TELEPHONE: (215) 400-4730

Addendum No. 01

Subject: **Ethel Allen Classroom Modernization Project
B-026C, B-027C, B-028C of 2018/19**

Location: **Dr. Ethel Allen Elementary School
3200 W. Lehigh Ave.,
Philadelphia, PA 19132**

This Addendum, ***dated February 26, 2019***, shall modify and become part of the Contract Documents for the work of this project. Any items not mentioned herein, or affected by, shall be performed strictly in accordance with the original documents.

1. Drawings and Specifications Revised by Narrative Note drawing text deletions are shown with ~~strikethrough~~, drawing text additions are shown in **bold**

- a. A300: CASEWORK SCHEDULE:

The Casework Schedule shall be revised as follows:

THE BASIS OF DESIGN CABINET SHALL BE CAMPBELL RHEA "EMPIRE" FULL FLUSH OVERLAY WITH SOLID WOOD EDGING. DELETE REFERENCES TO "SIGNATURE" STYLE CABINETS.

ADD TO SCHEDULE A TEACHER WARDROBE UNIT CABINET TYPE CT1 BASIS OF DESIGN CASEWORK MODEL No. 5866, 35-1/4" (W) x 84" (H) x 22-1/2" (D). PROVIDE 16 (SIXTEEN) CT1 CABINETS, ONE PER IN-SCOPE CLASSROOM.

THE QUANTITIES AND TYPES OF WALL RAILS AND COAT HOOKS ARE REVISED

THE ABOVE CHANGES TO THE CASEWORK SCHEDULE ARE SHOWN IN THE REVISED A300-Rev 1 DRAWING ISSUED WITH THIS ADDENDUM.

- b. A300: WALL EQUIPMENT SCHEDULE:

The Wall Equipment Schedule shall be revised as follows:

DELETE ALL THE NOTES UNDER THE "COMMENTS" COLUMN OF THE SCHEDULE.

Work in connection with Display Boards shall be conducted as follows:

IPBs SHALL BE SUPPLIED AND INSTALLED BY OTHERS UNDER THE DIRECTION OF THE SDP. PROVIDE BLOCKING FOR IPBs AS NECESSARY AND AS INDICATED IN THE DRAWINGS.

MARKERBOARDS AND TACKBOARDS SHALL BE SUPPLIED BY THE SDP AND INSTALLED BY THE CONTRACTOR. THE CONTRACTOR SHALL COORDINATE WITH OTHER PRIME CONTRACTORS AND FIELD VERIFY FOR THE BOARDS AND ADVISE SDP OF ANY DISCREPANCY OR INTERFERENCES AFFECTING THE DESIGN INTENT.

MARKERBOARD AND TACKBOARD INSERTS SHALL BE SUPPLIED AND INSTALLED BY THE CONTRACTOR

THE QUANTITIES AND TYPES OF DISPLAY BOARDS ARE REVISED.

THE ABOVE CHANGES TO THE WALL EQUIPMENT SCHEDULE ARE SHOWN IN THE REVISED A300-Rev 1 DRAWING ISSUED WITH THIS ADDENDUM.

c. A300: SPECIALTY EQUIPMENT SCHEDULE:

A SPECIALTY EQUIPMENT SCHEDULE IS ADDED

d. A300: CASEWORK DETAIL:

Delete "WALL CABINET & COAT HOOK" details

Add "WALL CABINET & WALL HOOK DETAIL" and "WALL CABINET & WALL HOOK DETAIL, ENLARGEMENT" shown on A300-Rev1 issued with this Addendum.

THE ABOVE CHANGES TO THE CASEWORK DETAILS ARE SHOWN IN THE REVISED A300-Rev 1 DRAWING ISSUED WITH THIS ADDENDUM.

e. A302: INTERIOR ELEVATIONS

DETAIL 1 IS REVISED, SEE A302 REV 1 ISSUED WITH THIS ADDENDUM.

f. A303: INTERIOR ELEVATIONS

DETAIL 1 IS REVISED, SEE A303 REV 1 ISSUED WITH THIS ADDENDUM.

2. Questions and Clarifications

.1 **Question:** Will another manufacture besides Campbell Rhea be accepted?

Response: Campbell Rhea is the Basis of Design manufacturer. Manufacturers providing equal products may be submitted for review

.2 **Question:** Can MBE/WBE requirements be reduced to a combined goal?

Response: Combined 15/20% Goal already included in the Bidding Documents.

.3 **Question:** Please provide a spec for Electrostatic painting.

Response: Specification SECTION 105115: ELECTROSTATIC PAINTING already included in the Technical Specifications

- .4 **Question:** Spec 101100 Visual Display, 1.2.A, Markerboard and Tackboard infills by GC, plans say by SDP. Who is responsible for them?

Response: See Item 1(b) of this Addendum

- .5 **Question:** Please confirm all visual display boards supplied by SDP will be delivered to each location by the SDP.

Response: Yes, Owner supplied visual display boards will be delivered to the school.

- .6 **Question:** Reference spec. 101100; Owner supplied visual display units, par. 1.3 B .3 please provide manufacturers installation details

Response: Proceed on the basis that the Owner supplied visual display units are similar in type to those listed in specification section 10 1100 VISUAL DISPLAY UNITS and install in accordance with the manufacturer's instructions as described in the specifications.

- .7 **Question:** Reference Supplementary Conditions section 16, photographs. Please consider deleting this section from scope of work as it does not seem appropriate or necessary for these type of projects.

Response: Already deleted by Section 01 1400 MODIFICATIONS TO THE GENERAL AND SUPPLEMENTARY CONDITIONS

- .8 **Question:** Finish schedule on drawing A600 shows ceramic tile as existing, drawings A601 & A602 appear to indicate ceramic tile as new. Please clarify.

Response: The tiled floors identified as CT-EX in the Finish Schedule are existing to remain. Protect these existing tile surfaces from damage during the course of the work. Thoroughly clean tile and grout to remove grime, stains, and discoloration. New tile finish CT-1 listed on the finish legend is not required and will be removed.

- .9 **Question:** Please confirm all items to be turned over to the SDP will be picked up by the SDP @ each school location

Response: Yes, SDP will pick up at each school location.

- .10 **Question:** Ethel Allen School; drawing A-300 wall equipment schedule are these items are to be furnished by SDP per spec. 010 1100?

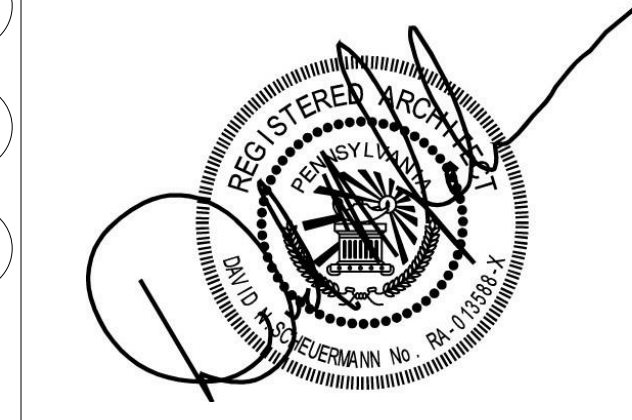
Response: See Item 1(b) of this Addendum

END OF ADDENDUM NO. 1

Attachment(s)

Drawings – A300-Rev1
A302-Rev1
A303-Rev1

SEAL:



NAME (LICENSED PROFESSIONAL) STATE AND LICENSE NO. DATE XXX/XX/20XX

THE SHEWARD PARTNERSHIP, LLC
1. 215.751.9301 2300 Chestnut Street Philadelphia, PA 19103
F. 215.751.9302



PRINCETON ENGINEERING SERVICES, PC
101 Morgan Lane - Suite 205, Plainsboro, NJ 08536
t. 609.452.9700 www.princetonengineering.com

CASEWORK SCHEDULE

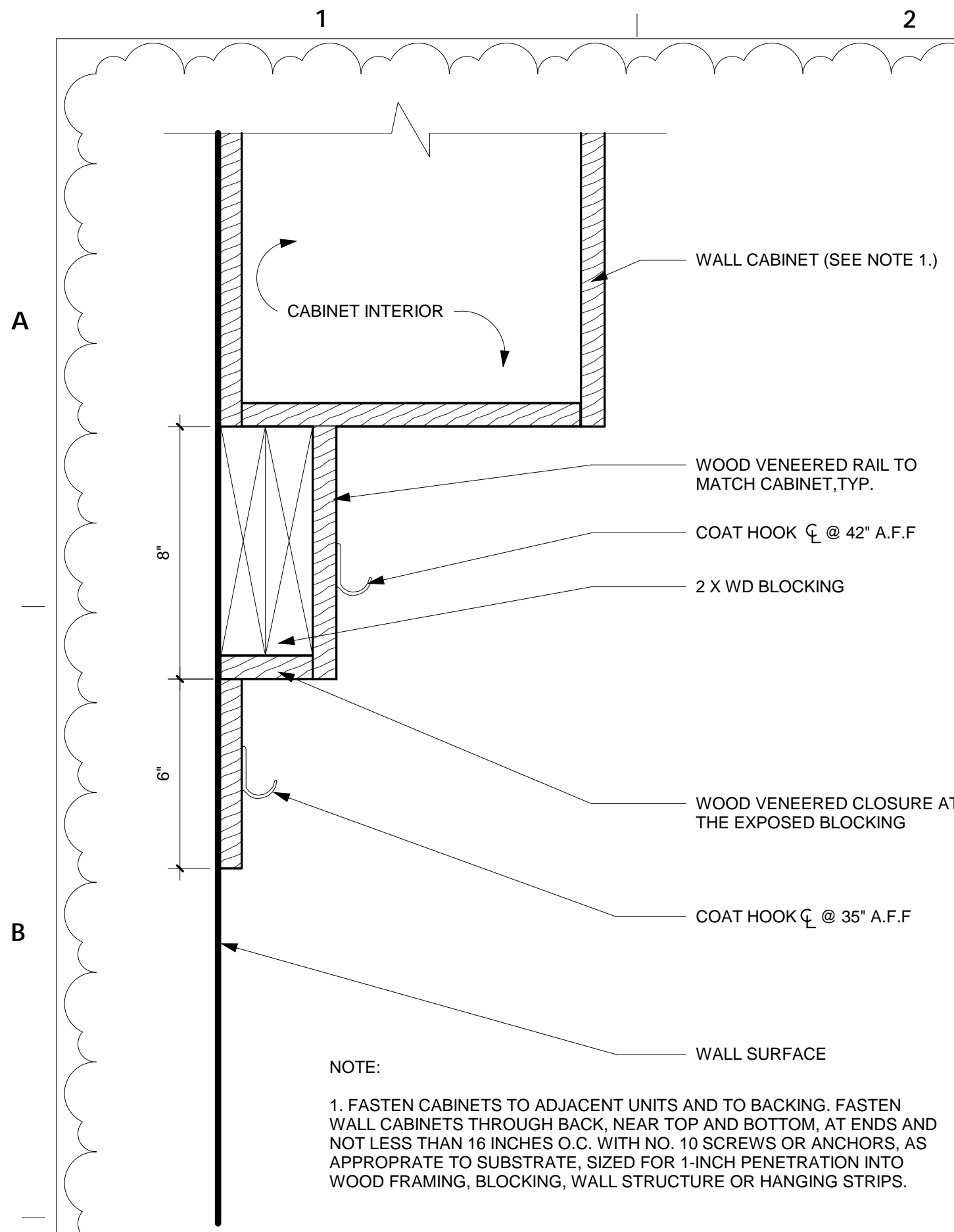
MARK	DESCRIPTION	MODEL	BASIS OF DESIGN	MANUF.	DIMENSIONS			COUNT	COMMENTS
					WIDTH	DEPTH	HEIGHT		
C5	Coat Hook on Wood Ledger	6976M	Institutional Casework Inc.		2' - 6"	0' - 1"	0' - 6"	32 w/ 128 hooks	M- Hooks mounted to wood ledger, (4) hooks per unit. See dwgs on A300. Dimensions in casework schedule refer to wood ledger. #3000 Maple Amber. EPCO CH202-ZBN-2 Brushed Nickel Hooks.
C5.2	Coat Hook on Wood Ledger	6976M	Institutional Casework Inc.		2' - 6"	0' - 1"	0' - 8"	32 w/ 96 hooks	M- Hooks mounted to wood ledger, (3) hooks per unit. See dwgs on A300. Dimensions in casework schedule refer to wood ledger. #3000 Maple Amber. EPCO CH202-ZBN-2 Brushed Nickel Hooks.
C5.3	Coat Hook on Wood Ledger	6976M	Institutional Casework Inc.		2' - 0"	0' - 1"	0' - 6"	16 w/ 48 hooks	M- Hooks mounted to wood ledger, (3) hooks per unit. See dwgs on A300. Dimensions in casework schedule refer to wood ledger. #3000 Maple Amber. EPCO CH202-ZBN-2 Brushed Nickel Hooks.
C5.4	Coat Hook on Wood Ledger	6976M	Institutional Casework Inc.		2' - 0"	0' - 1"	0' - 8"	16 w/ 32 hooks	M- Hooks mounted to wood ledger, (2) hooks per unit. See dwgs on A300. Dimensions in casework schedule refer to wood ledger. #3000 Maple Amber. EPCO CH202-ZBN-2 Brushed Nickel Hooks.
C6	Student Cubby	7434M	Institutional Casework Inc.		2' - 6"	1' - 0"	4' - 6"	6	M- See dwgs on A300 for modified dimensions. #3000 Maple Amber
CB1	Wood Base Cabinet	3310M	Institutional Casework Inc.		2' - 11 1/4"	1' - 10 1/2"	1' - 11"	4	M- Height 1' 11". See dwgs on A300. Empire Maple, #3000 Maple Amber
CB2	Wood Base Cabinet	3604M	Institutional Casework Inc.		1' - 3 5/16"	1' - 10 1/2"	2' - 6"	9	M- Height 2' 6". See dwgs on A300. Empire Maple, #3000 Maple Amber
CS1	Wood Base Cabinet	3538M	Institutional Casework Inc.		2' - 11 1/4"	1' - 10 1/2"	1' - 11"	4	M- Height 1' 11". See dwgs on A300. Empire Maple, #3000 Maple Amber
CS2	ADA Slanted Panel	8760M	Institutional Casework Inc.		2' - 9 1/4"	1' - 10 1/2"	2' - 6"	1	M- Clearance width 2' - 7 3/4", total width 2' - 9 1/4". See dwgs on A300. Empire Maple #3000 Maple Amber
CS3	ADA Slanted Panel	8760M	Institutional Casework Inc.		2' - 9 1/4"	1' - 10 1/2"	2' - 6"	8	M- Clearance width 2' - 6 3/4", total width 2' - 8 1/4". See dwgs on A300. Empire Maple #3000 Maple Amber
CT1	Wood Tall Storage Cabinet	5866	Institutional Casework Inc.		2' - 11 1/4"	1' - 10 1/2"	7' - 0"	13	Empire Maple, #3000 Maple Amber
CW1	Wood Wall Case	4719	Institutional Casework Inc.		2' - 11 1/4"	1' - 1"	2' - 7 1/4"	8	Empire Maple #3000 Maple Amber
CW2	Wood Wall Case	4669	Institutional Casework Inc.		2' - 6"	1' - 1"	1' - 4 3/16"	20	Empire Maple #3000 Maple Amber
CW4	Wood Wall Case	4717M	Institutional Casework Inc.		2' - 9 1/4"	1' - 1"	2' - 7 1/4"	1	M- Width 2' 9 1/4". Empire Maple #3000 Maple Amber
CW5	Wood Wall Case	4423	Institutional Casework Inc.		1' - 3 5/16"	1' - 1"	2' - 7 1/4"	9	Empire Maple #3000 Maple Amber
CW7	Wood Wall Case	4717	Institutional Casework Inc.		2' - 6"	1' - 1"	2' - 7 1/4"	20	Empire Maple #3000 Maple Amber
CFP	Wood Filler Panel	N/A	Institutional Casework Inc.		--	--	--	8	V.I.F. See interior elevations for locations. #3000 Maple Amber

WALL EQUIPMENT SCHEDULE

Type Mark	Description	Height	Width	Count	Comments
MB-8	Markerboard	4' - 0"	8' - 0"	2	SEE WALL EQUIPMENT NOTE 2
TB-8	Tackboard	4' - 0"	8' - 0"	3	SEE WALL EQUIPMENT NOTE 2
TB-12	Tackboard	4' - 0"	12' - 0"	4	SEE WALL EQUIPMENT NOTE 2
TH-22	Tackboard Header	1' - 0"	22' - 0"	2	SEE WALL EQUIPMENT NOTE 2
TI-11	Tackboard Insert	10' 7"	2' 10"	4	V.I.F. SEE WALL EQUIPMENT NOTE 3
IPB	INTERACTIVE PANEL BOARD			13	SEE WALL EQUIPMENT NOTE 1

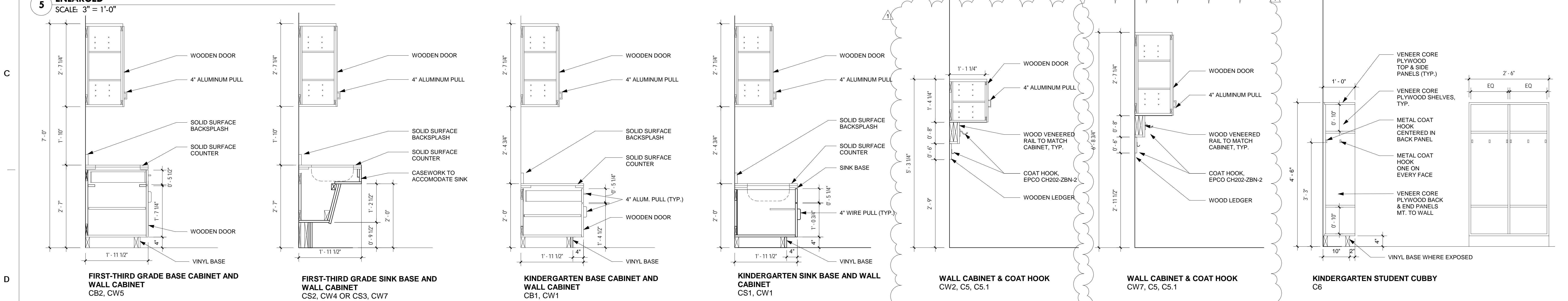
SPECILATY EQUIPMENT SCHEDULE

Type Mark	Description	Count	Manufacturer	Comments
T2	SOAP DISPENSER	13	--	EXISTING TO BE REINSTALLED
T3	TOWEL DISPENSER	11	--	EXISTING TO BE REINSTALLED
T1	HAND SANITIZER DISPENSER	13	--	EXISTING TO BE REINSTALLED

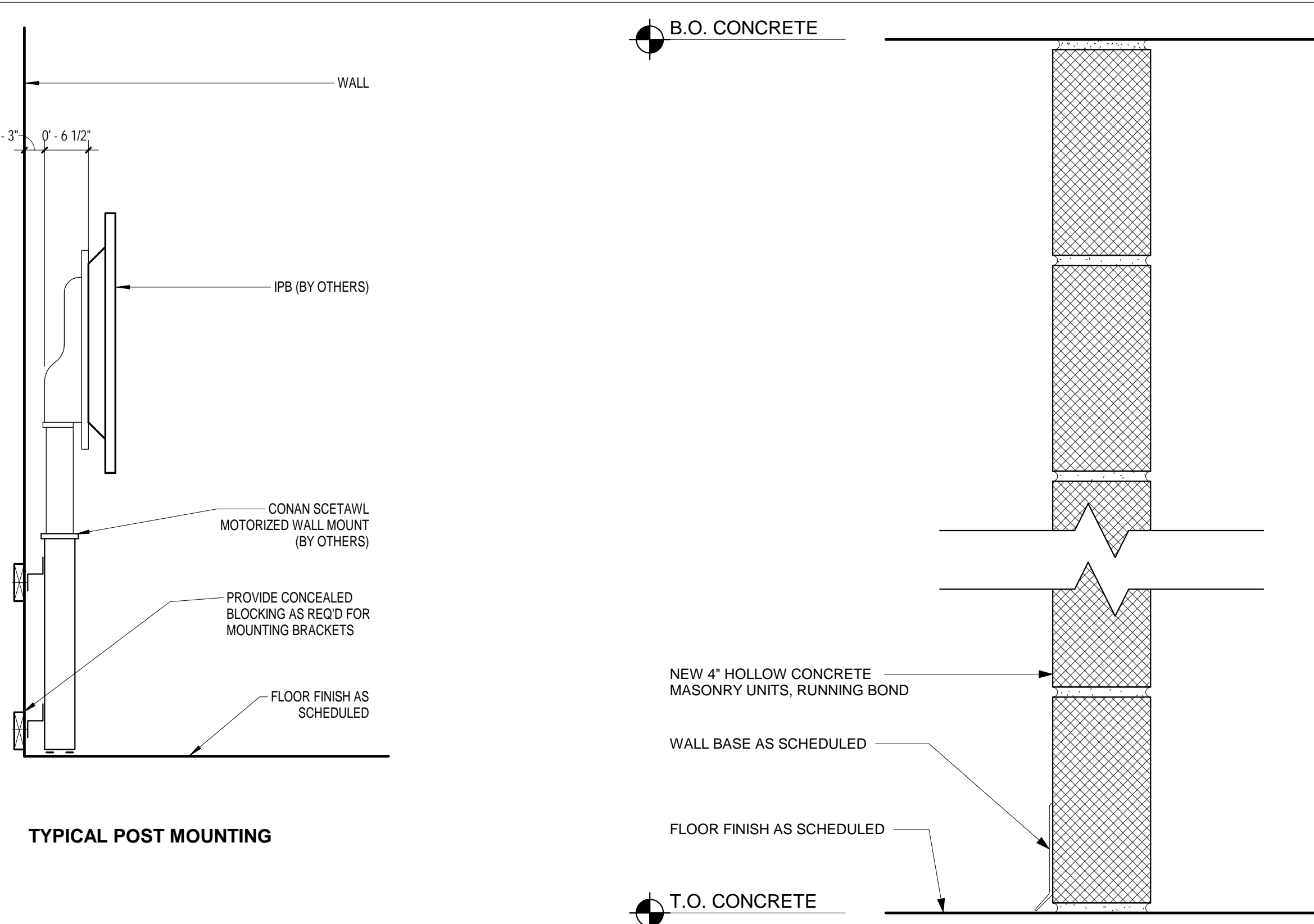
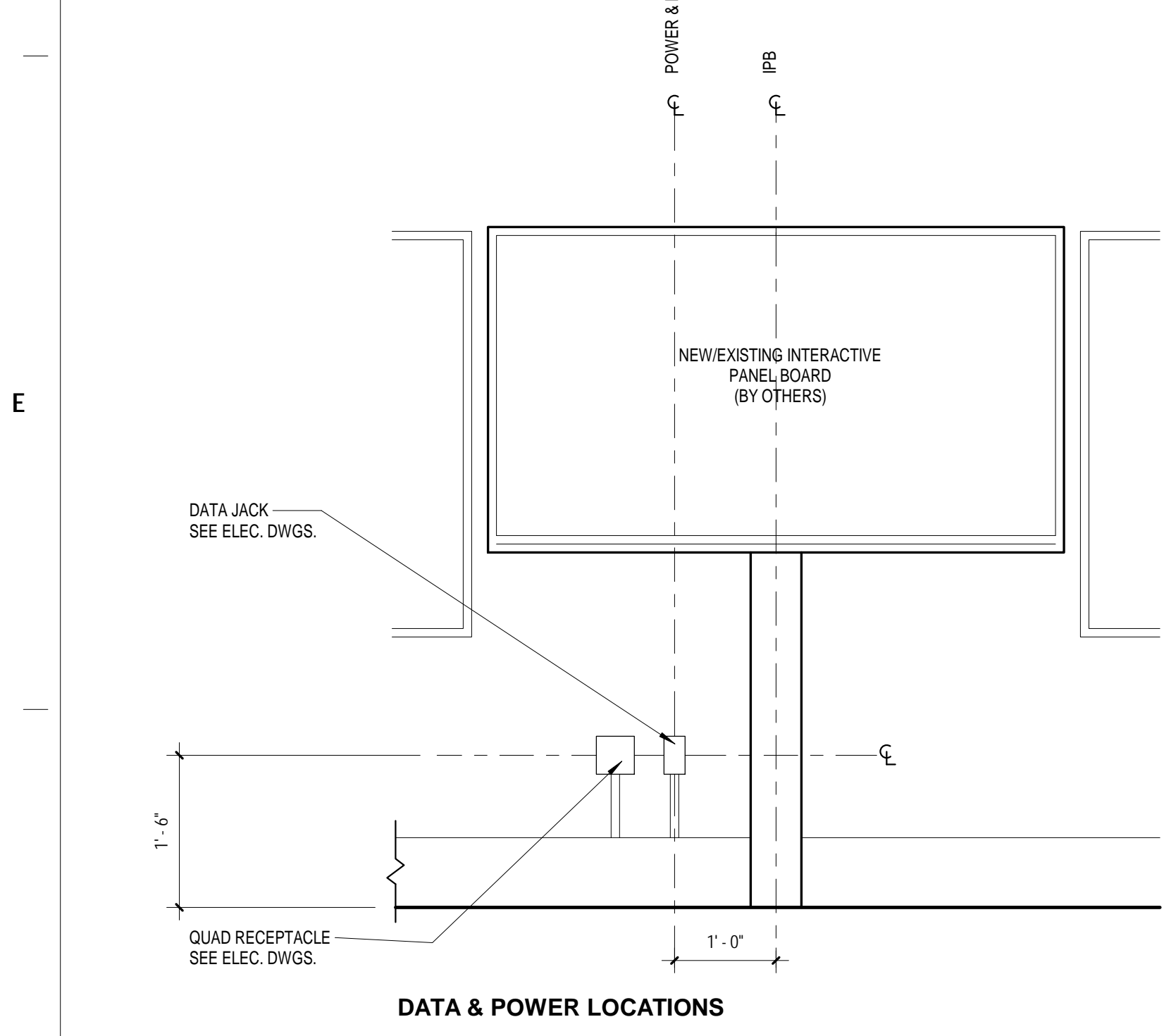


NOTE:
1. FASTEN CABINETS TO ADJACENT UNITS AND TO BACKING. FASTEN WALL CABINETS THROUGH BACK, NEAR TOP AND BOTTOM. AT ENDS AND NOT LESS THAN 16 INCHES O.C. WITH NO. 10 SCREWS OR ANCHORS, AS APPROPRIATE TO SUBSTRATE. SIZED FOR 1-INCH PENETRATION INTO WOOD FRAMING, BLOCKING, WALL STRUCTURE OR HANGING STRIPS.

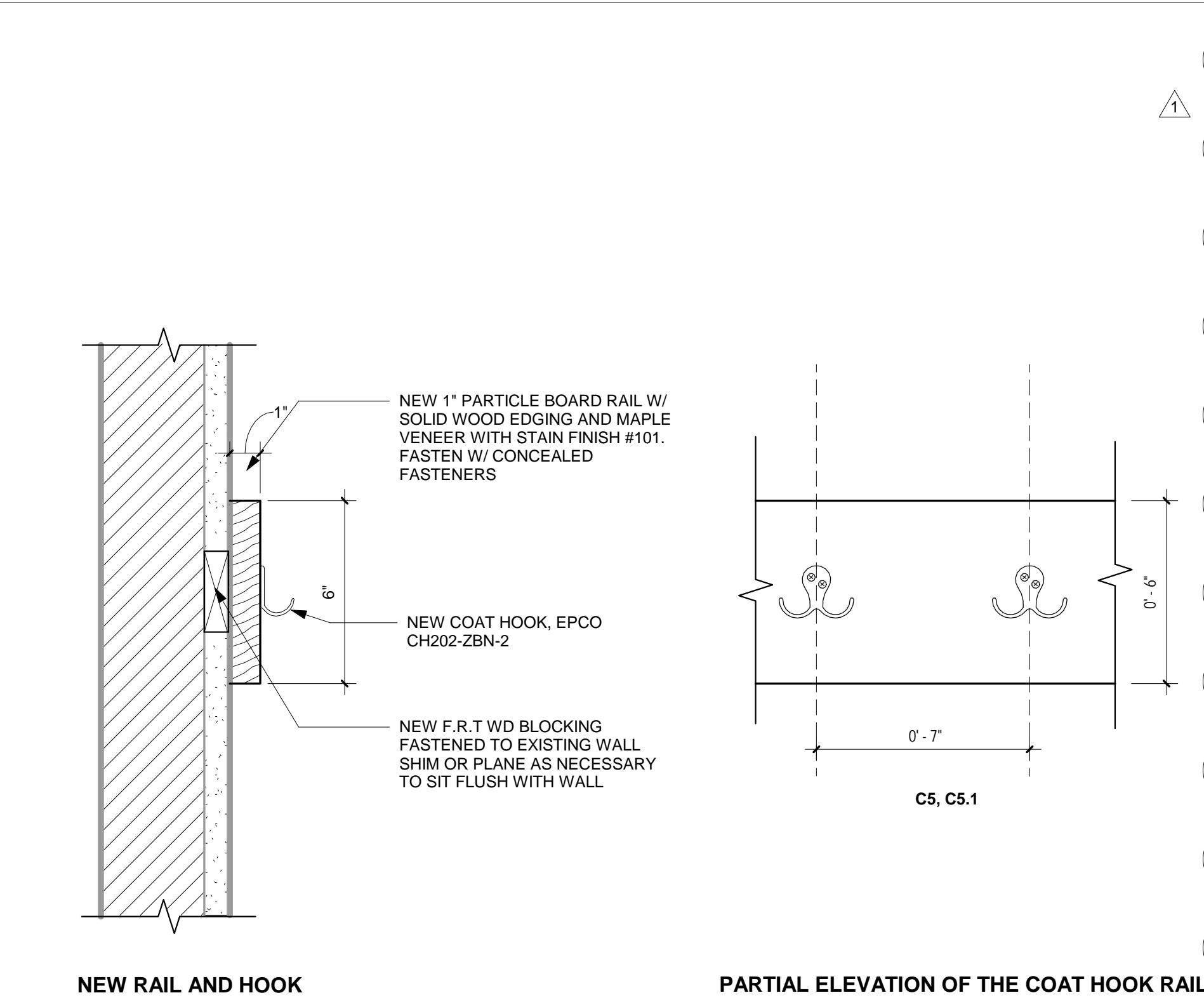
WALL CABINET AND WALL HOOK DETAIL ENLARGED



1 CASEWORK DETAILS



3 PARTITION WALL TYPES



4 TYP. COAT HOOK DETAIL



GENERAL NOTES

- NEW/EXISTING INTERACTIVE PANEL BOARDS AND MOUNTING POSTS AND BRACKETS ARE PROVIDED BY OTHERS. INSTALLATION OF INTERACTIVE PANEL BOARDS AND MOUNTING HARDWARE IS BY OTHERS.
- ALL DATA AND POWER CONDUIT AT TEACHING WALLS TO BE INSTALLED BELOW TEACHING WALL BOARDS. DO NOT RUN VERTICAL CONDUIT BEHIND IPB. COORDINATE W/ ELECTRICAL DWGS.
- SEE FINISH SCHEDULE FOR CASEWORK COLOR SELECTIONS.

WALL EQUIPMENT NOTES

- IPBs SHALL BE SUPPLIED AND INSTALLED BY OTHERS UNDER THE DIRECTION OF THE SDP. PROVIDE BLOCKING FOR IPBs AS NECESSARY AND AS INDICATED IN THE DRAWINGS.
- MARKERBOARDS AND TACKBOARDS SHALL BE SUPPLIED BY THE SDP AND INSTALLED BY THE CONTRACTOR. THE CONTRACTOR SHALL COORDINATE WITH OTHER PRIME CONTRACTORS AND FIELD VERIFY FOR THE BOARDS AND ADVISE SDP OF ANY DISCREPANCY OR INTERFERENCES AFFECTING THE DESIGN INTENT.
- MARKERBOARDS AND TACKBOARD INSERTS SHALL BE SUPPLIED AND INSTALLED BY THE CONTRACTOR

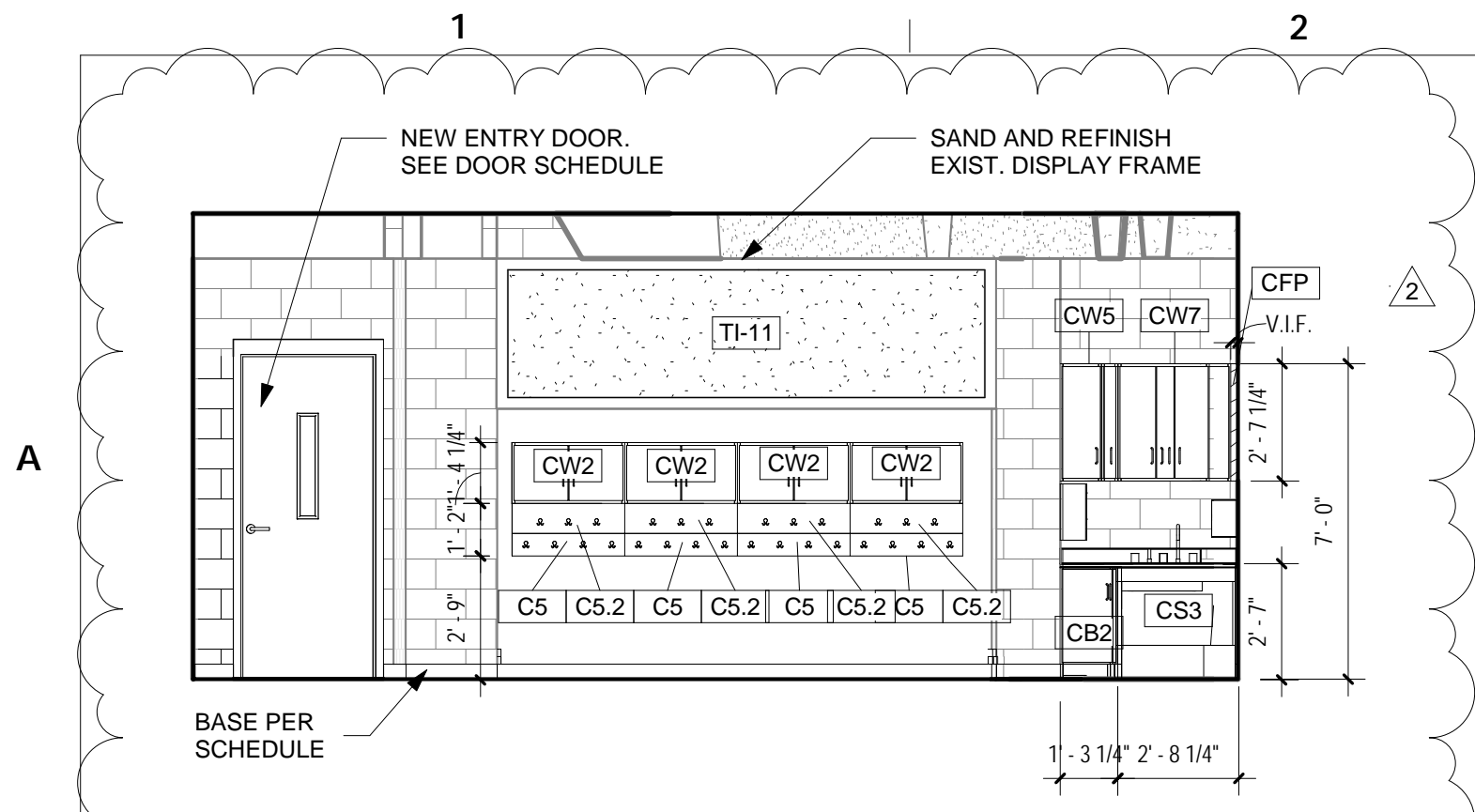
BID SUBMISSION: JANUARY 16, 2019

10		
9		
8		
7		
6		
5		
4		
3		
2		
1	2/21/19	ADDENDUM 1
NO.	DATE	REVISION

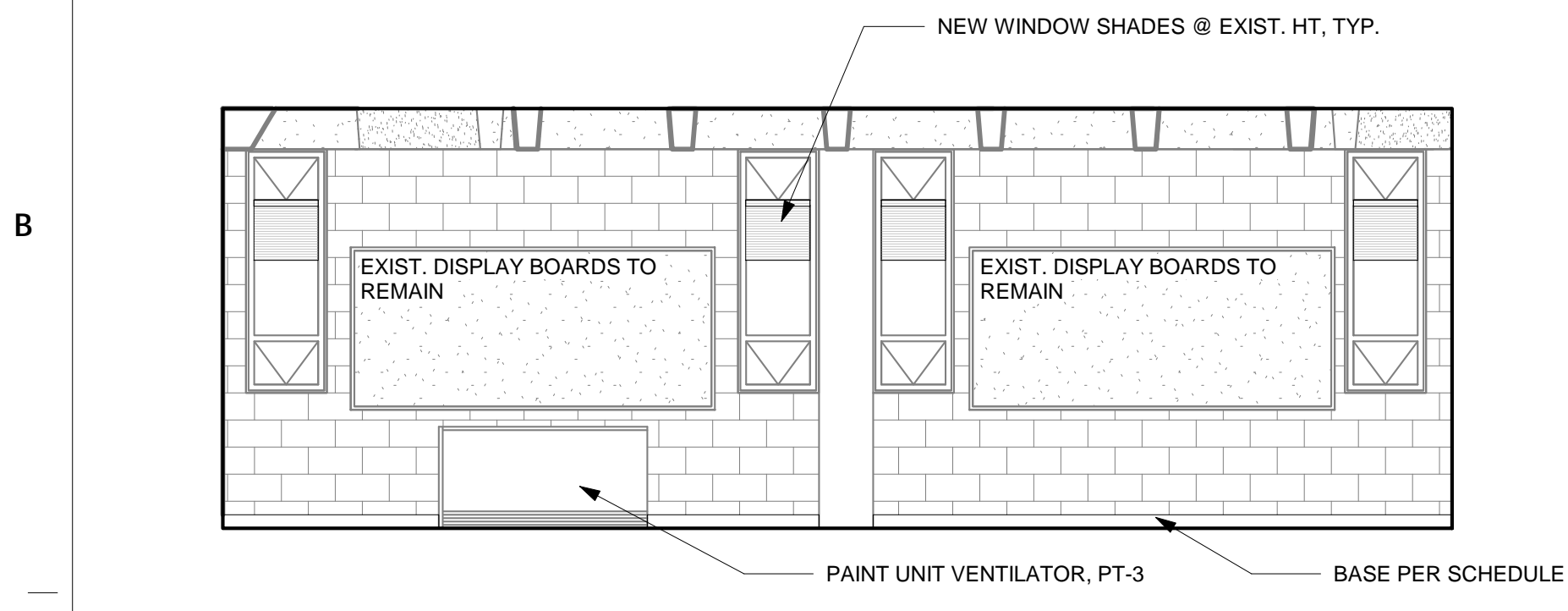
SCHOOL & LOCATION
DR. ETHEL ALLEN ELEMENTARY SCHOOL
3200 W Lehigh Ave.
Philadelphia, PA 19132
PROJECT TITLE
CLASSROOM MODERNIZATION

DRAWING TITLE
CASEWORK SCHEDULE & DETAILS

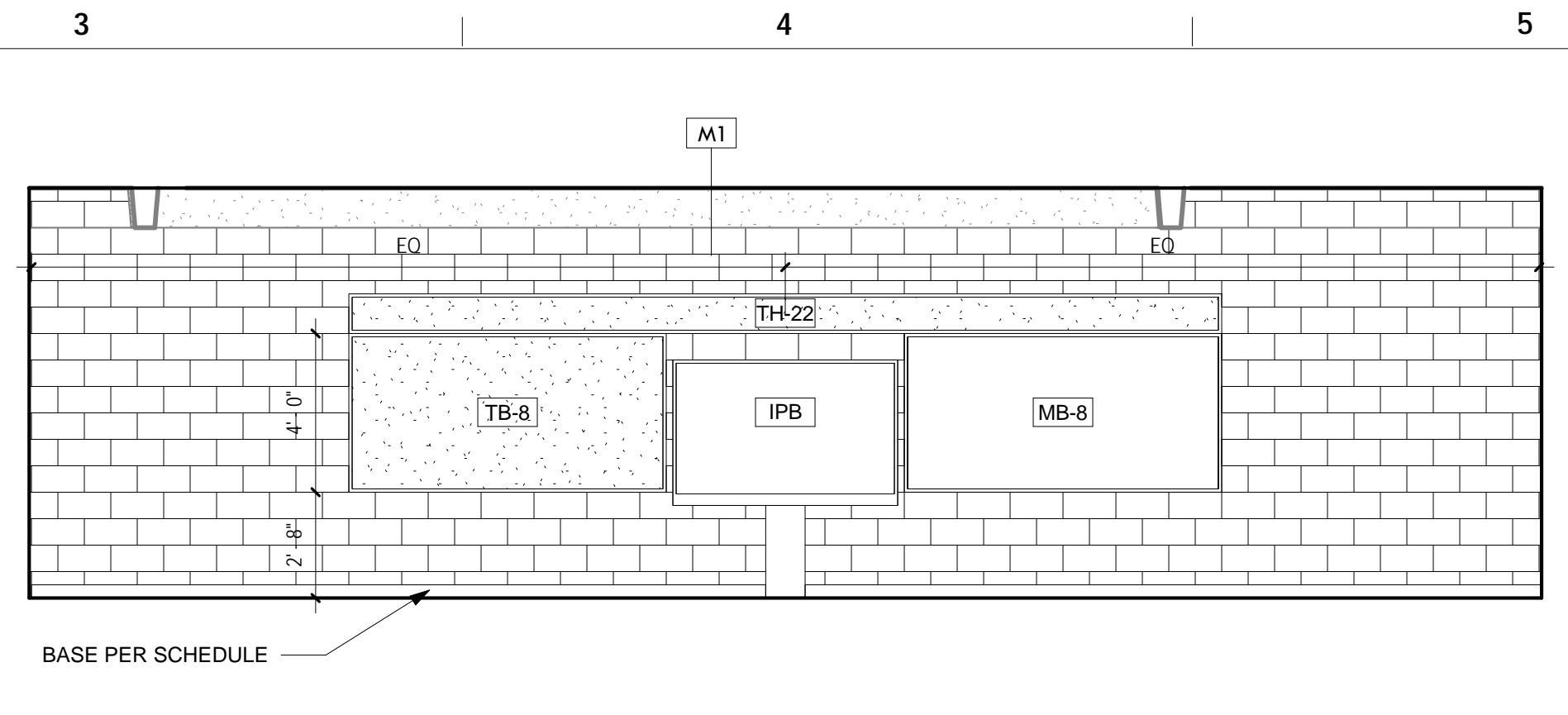
DRAWING SCALE As Indicated	FILE NO. XXX
LOCATION NO. XXXX	CHECKED BY GJC
DRAWN BY ACC	DATE 2018 / 19
GC B-026C	OF 2018 / 19
PC B-027C	OF 2018 / 19
EC B-028C	OF 2018 / 19



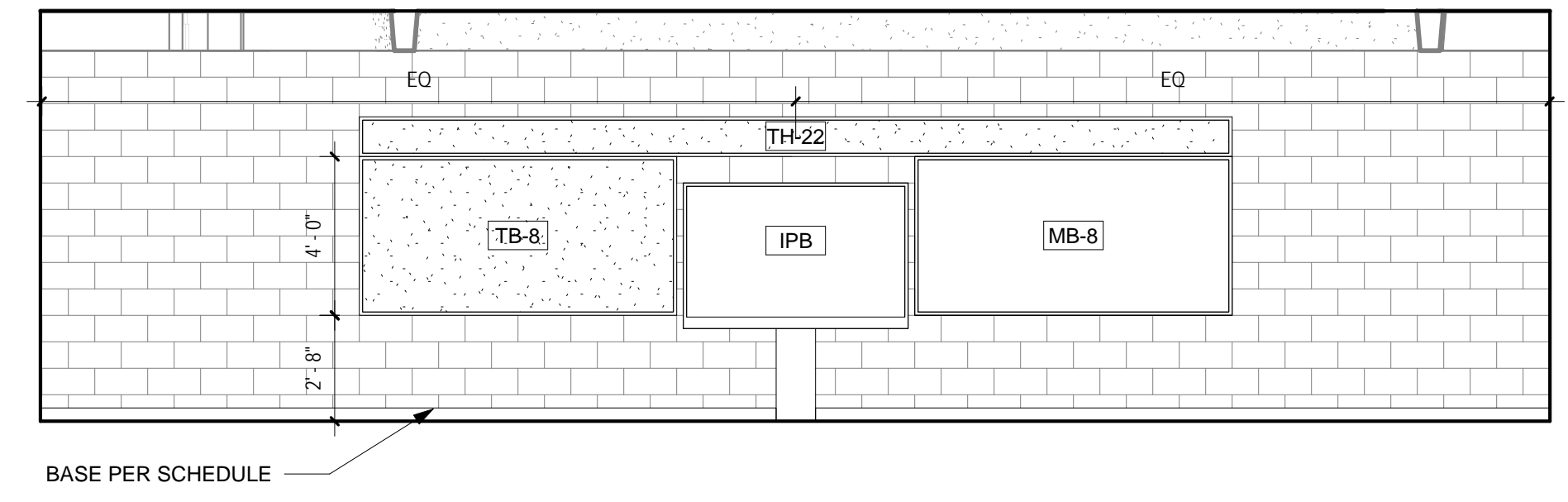
1 ENTRY WALL ELEVATION - RMS 102 103 104 105 106
SCALE: 1/4" = 1'-0"



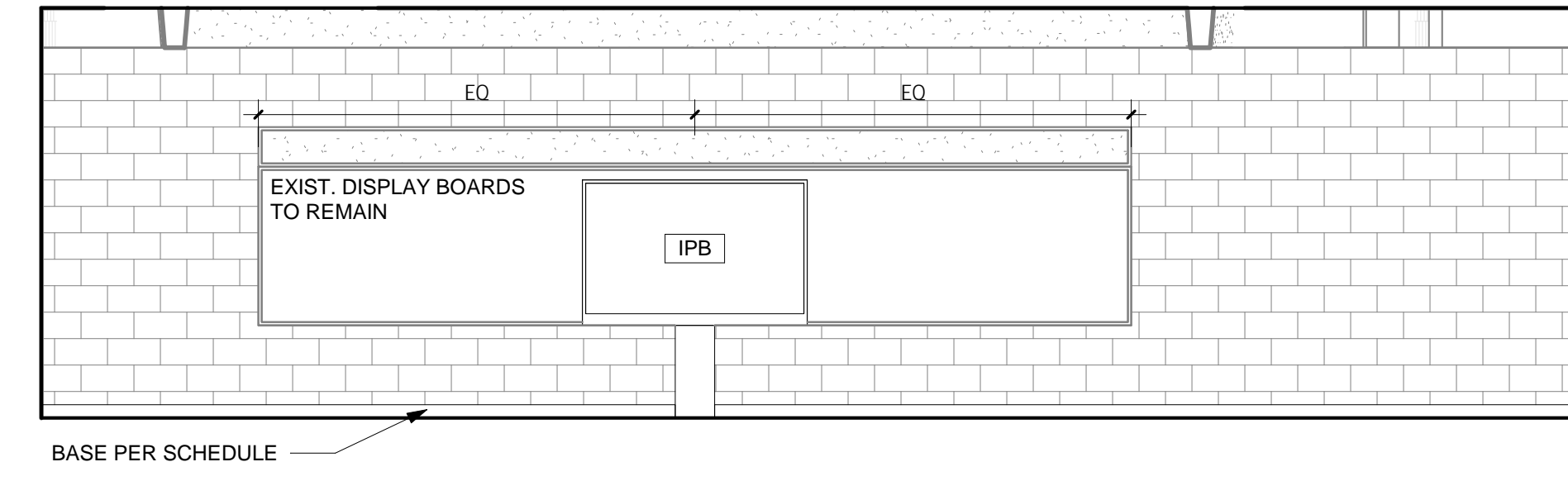
4 WINDOW WALL ELEVATION - RMS 102 103 104 105 106
SCALE: 1/4" = 1'-0"



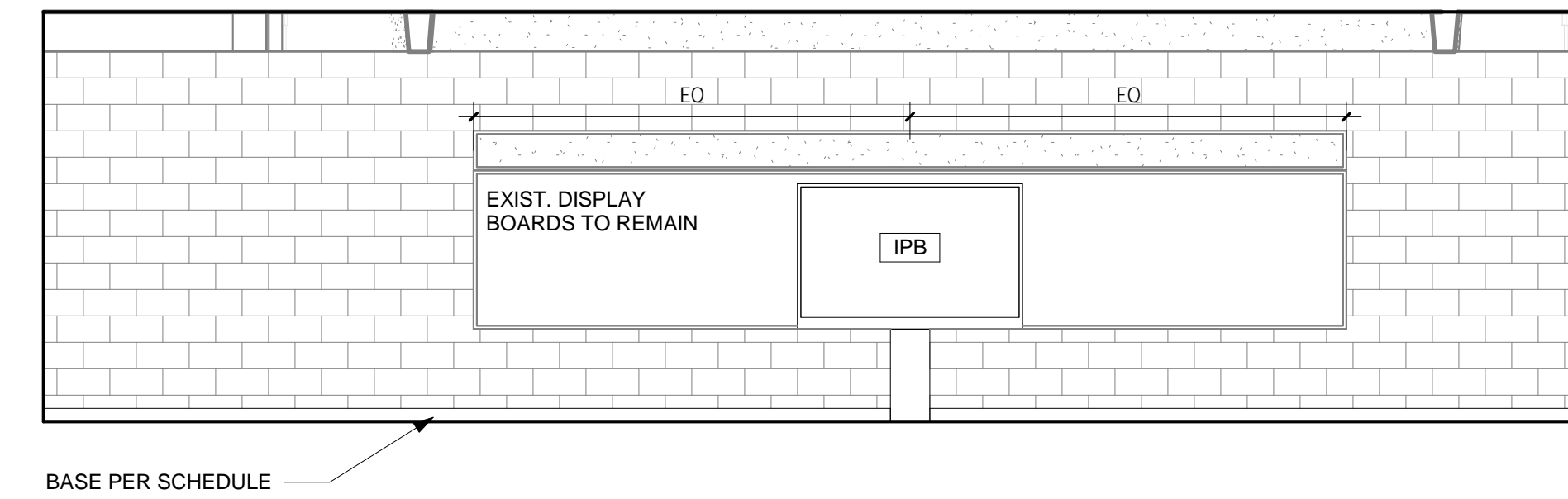
2 TEACHING WALL ELEVATION - RM 102
SCALE: 1/4" = 1'-0"



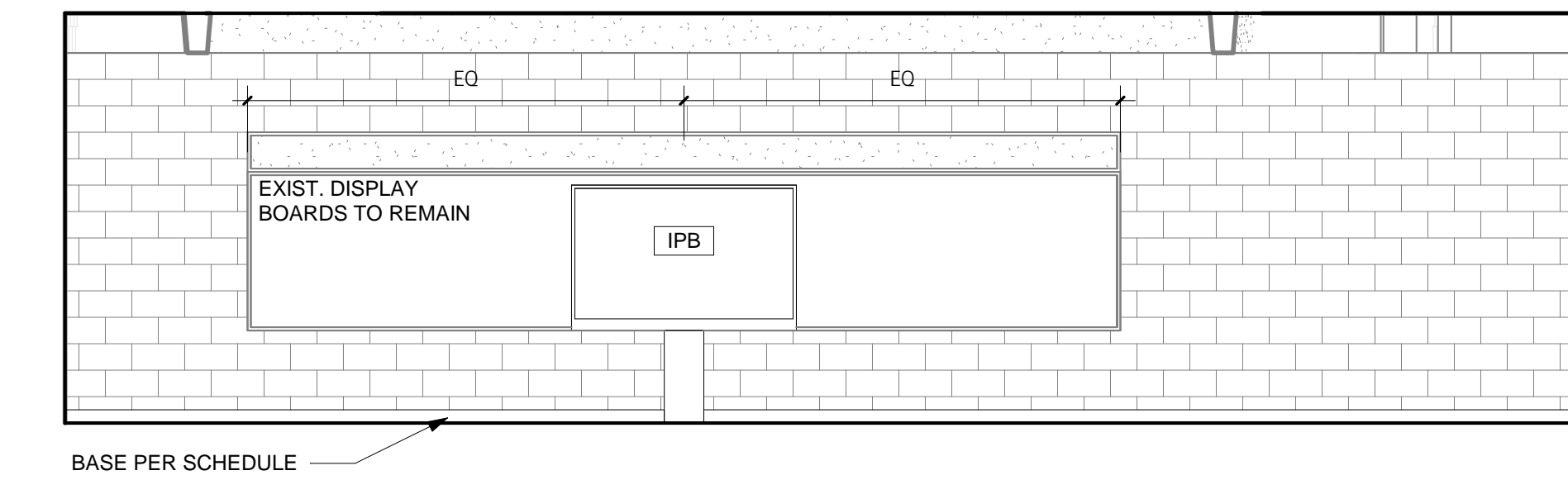
5 TEACHING WALL ELEVATION - RM 103
SCALE: 1/4" = 1'-0"



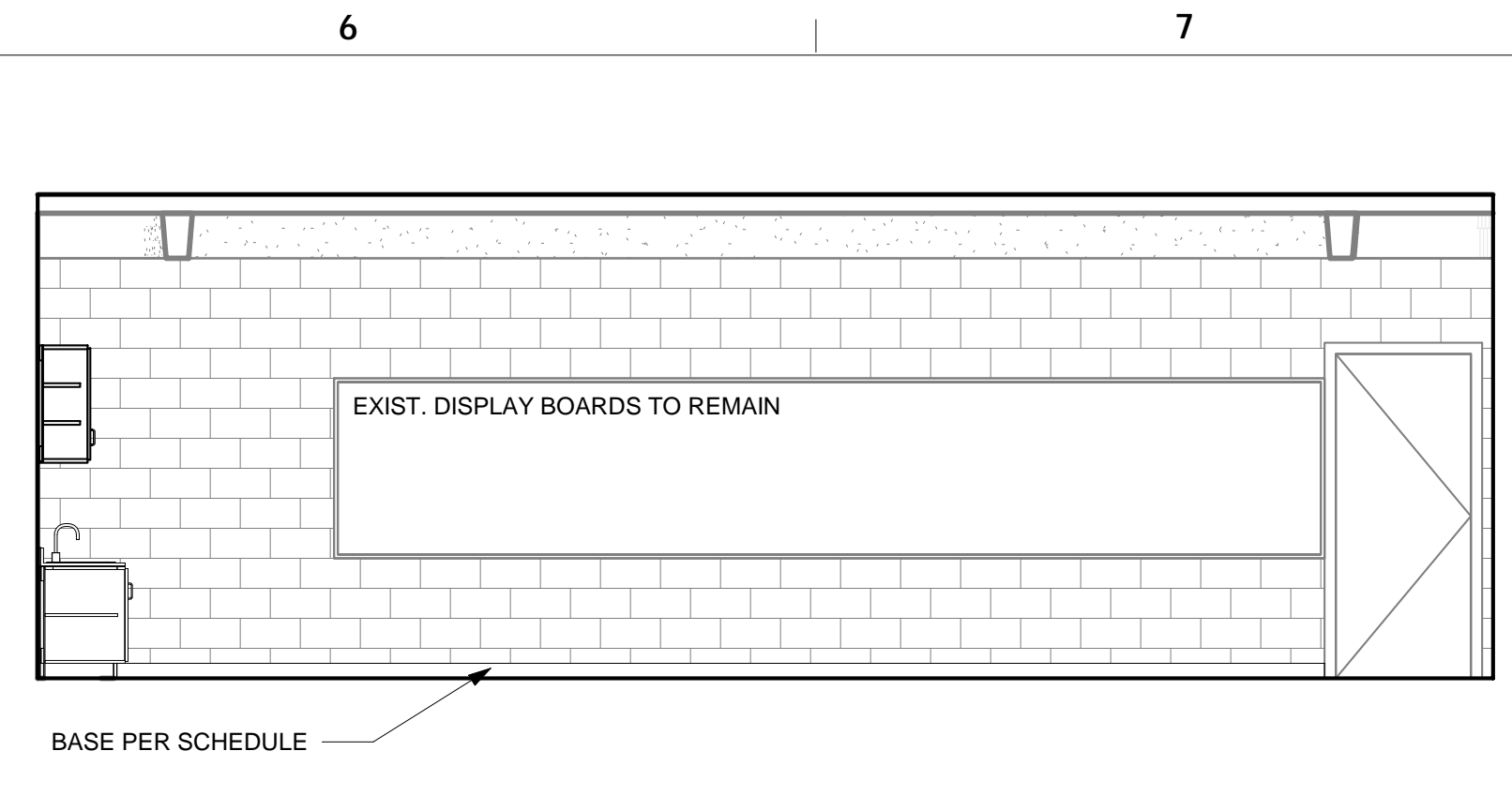
7 TEACHING WALL ELEVATION - RM 104
SCALE: 1/4" = 1'-0"



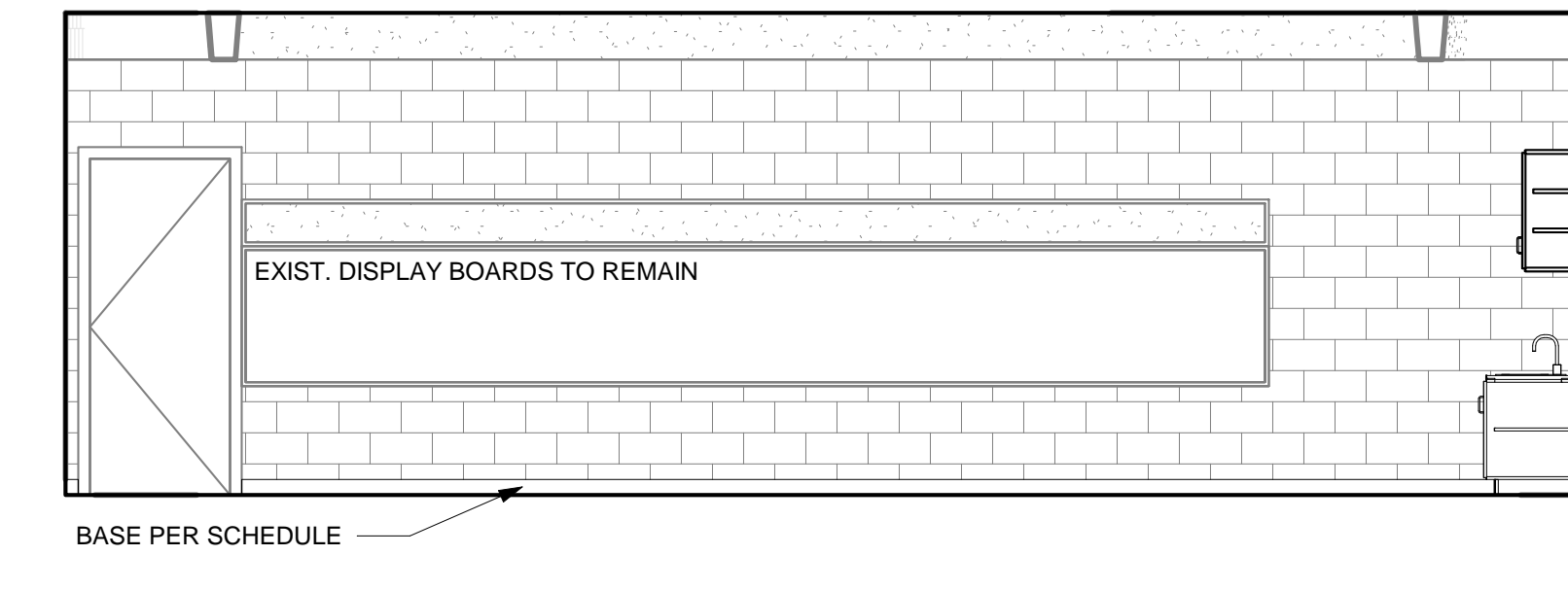
9 TEACHING WALL ELEVATION - RM 105
SCALE: 1/4" = 1'-0"



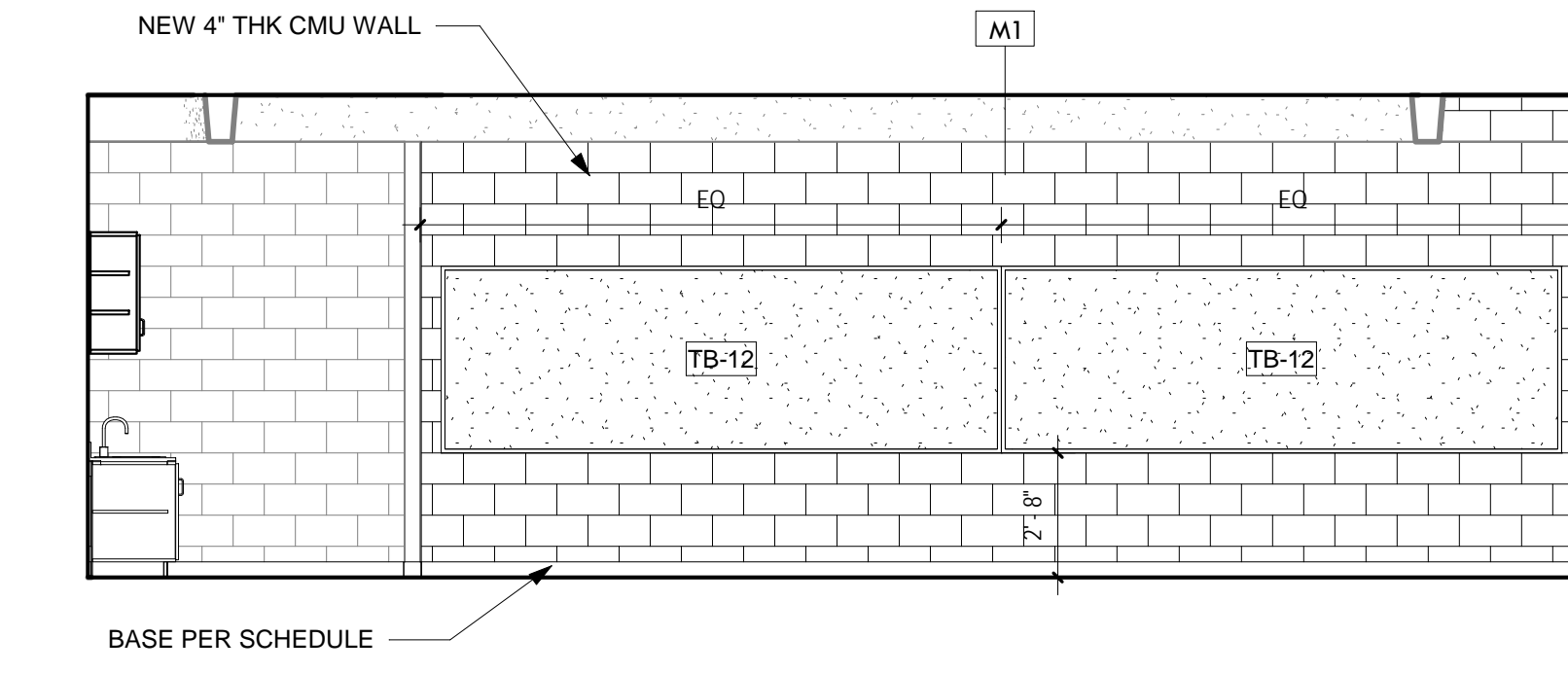
11 TEACHING WALL ELEVATION - RM 106
SCALE: 1/4" = 1'-0"



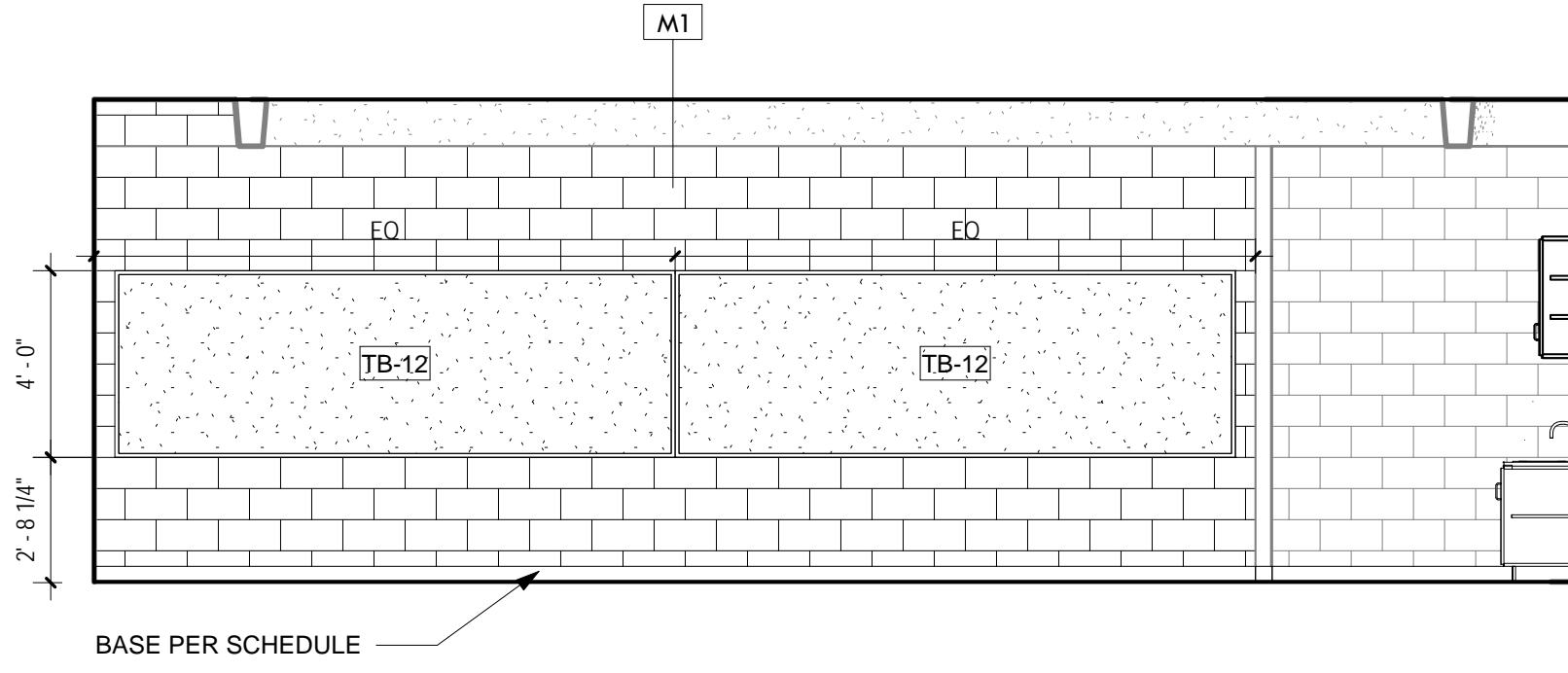
3 REAR WALL ELEVATION - RM 102
SCALE: 1/4" = 1'-0"



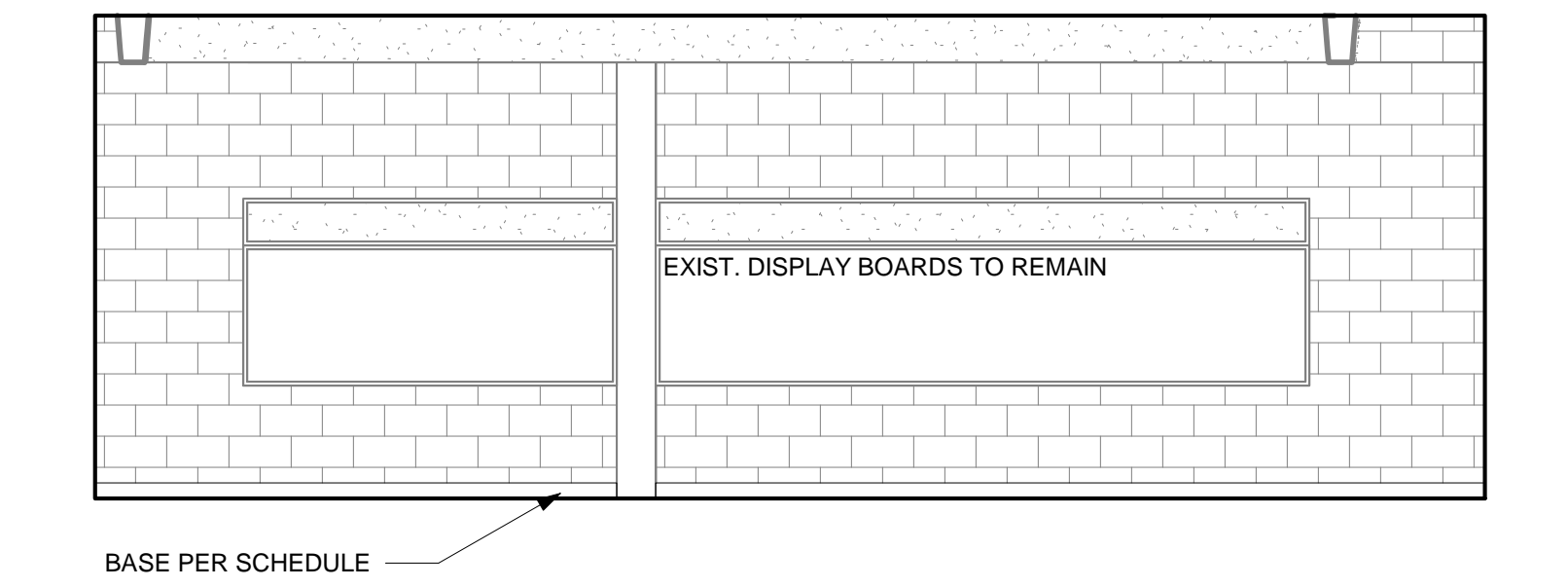
6 REAR WALL ELEVATION - RM 103
SCALE: 1/4" = 1'-0"



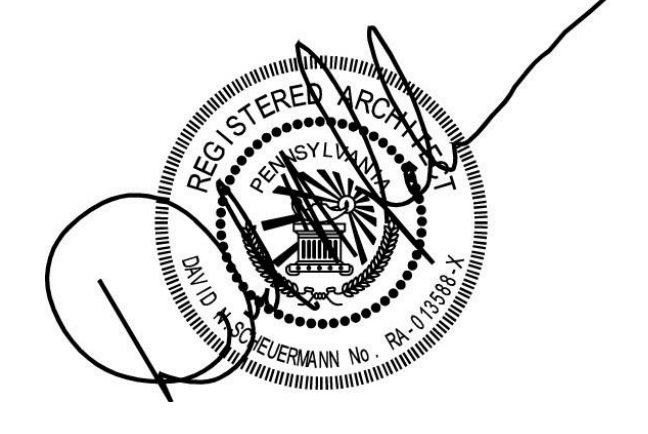
8 REAR WALL ELEVATION - RM 104
SCALE: 1/4" = 1'-0"



10 REAR WALL ELEVATION - RM 105
SCALE: 1/4" = 1'-0"



12 REAR WALL ELEVATION - RM 106
SCALE: 1/4" = 1'-0"



BID SUBMISSION: JANUARY 16, 2019

10		
9		
8		
7		
6		
5		
4		
3		
2		

1	2/21/19	ADDENDUM 1
---	---------	------------

SCHOOL & LOCATION

DR. ETHEL ALLEN ELEMENTARY SCHOOL
3200 W Lehigh Ave.
Philadelphia, PA 19132

PROJECT TITLE

CLASSROOM MODERNIZATION

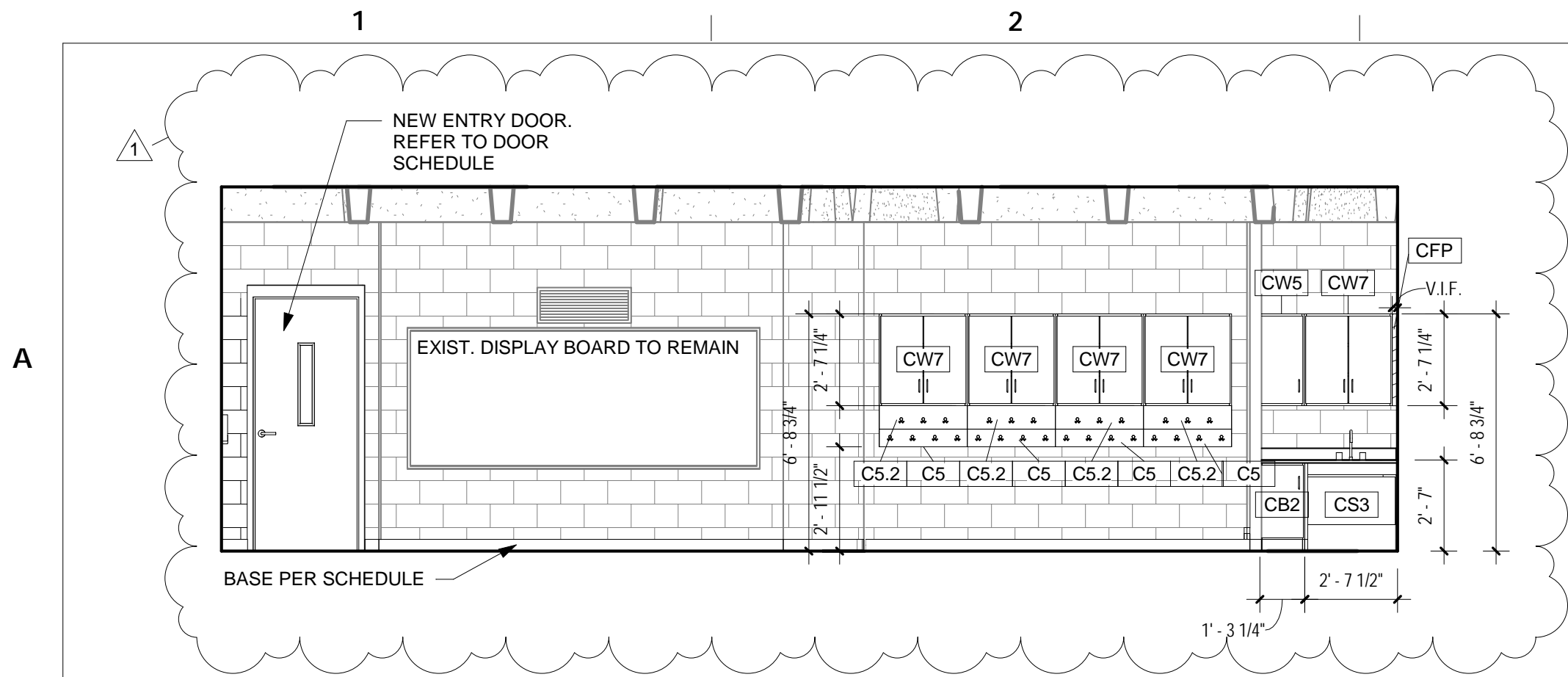
DRAWING TITLE

INTERIOR ELEVATIONS

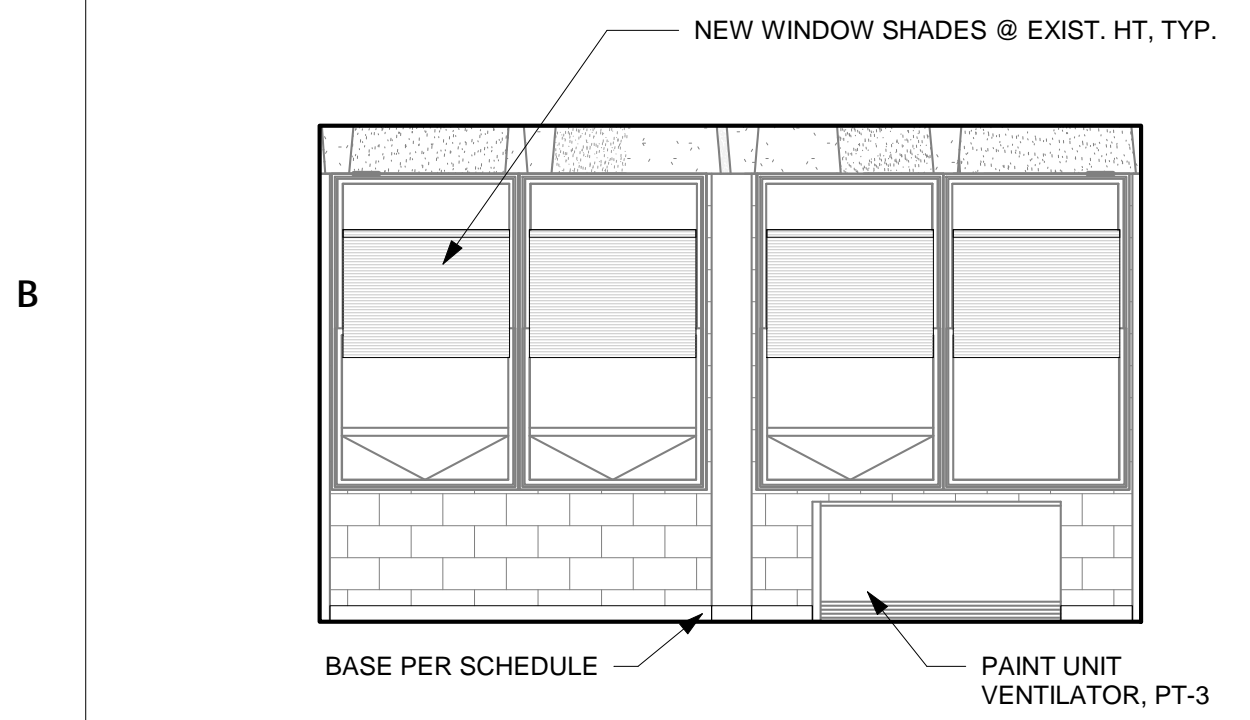
DRAWING SCALE As Indicated			
LOCATION NO. XXXX	FILE NO. XXX		
DRAWN BY ACC	CHECKED BY GJC		
GC B-026C	OF 2018 / 19		
PC B-027C	OF 2018 / 19		
EC B-028C	OF 2018 / 19		

DRAWING NO.

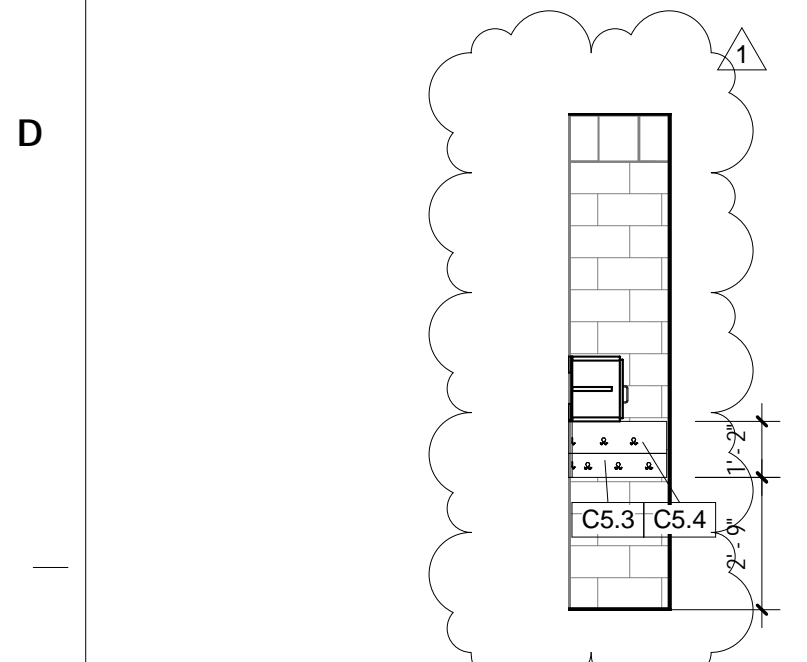
A302



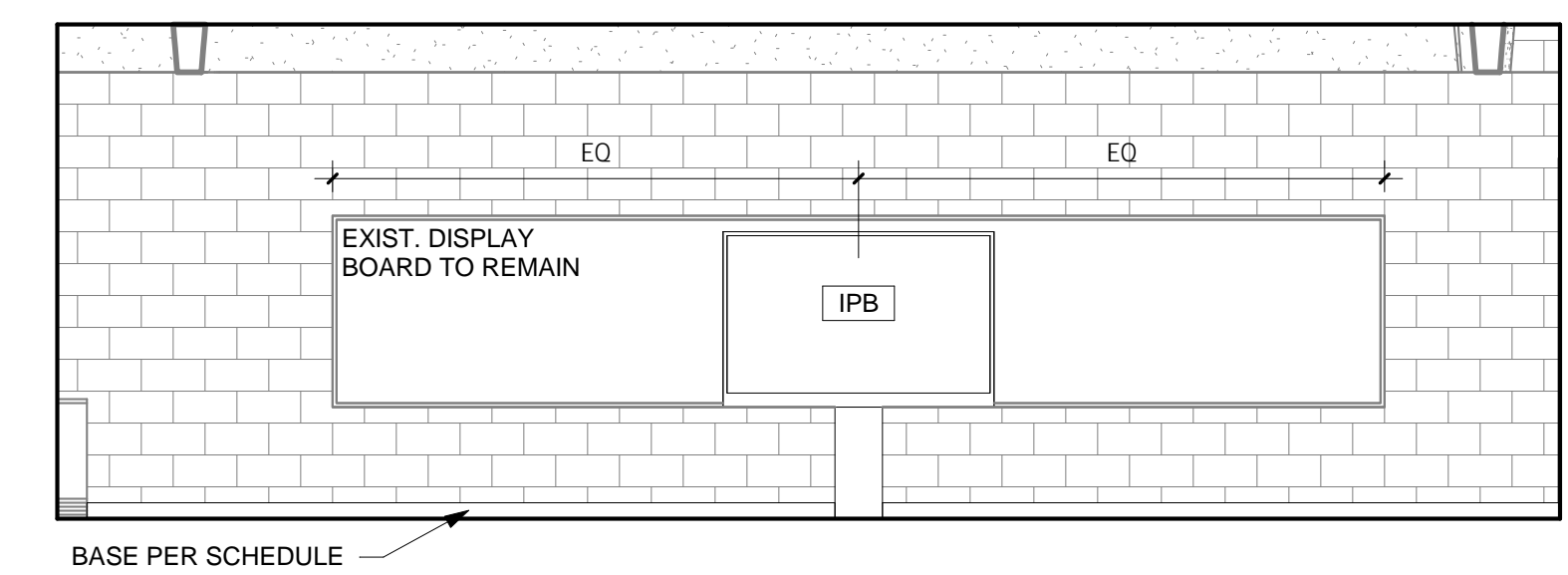
1 ENTRY WALL ELEVATION - RM 113 114 203
SCALE: 1/4" = 1'-0"



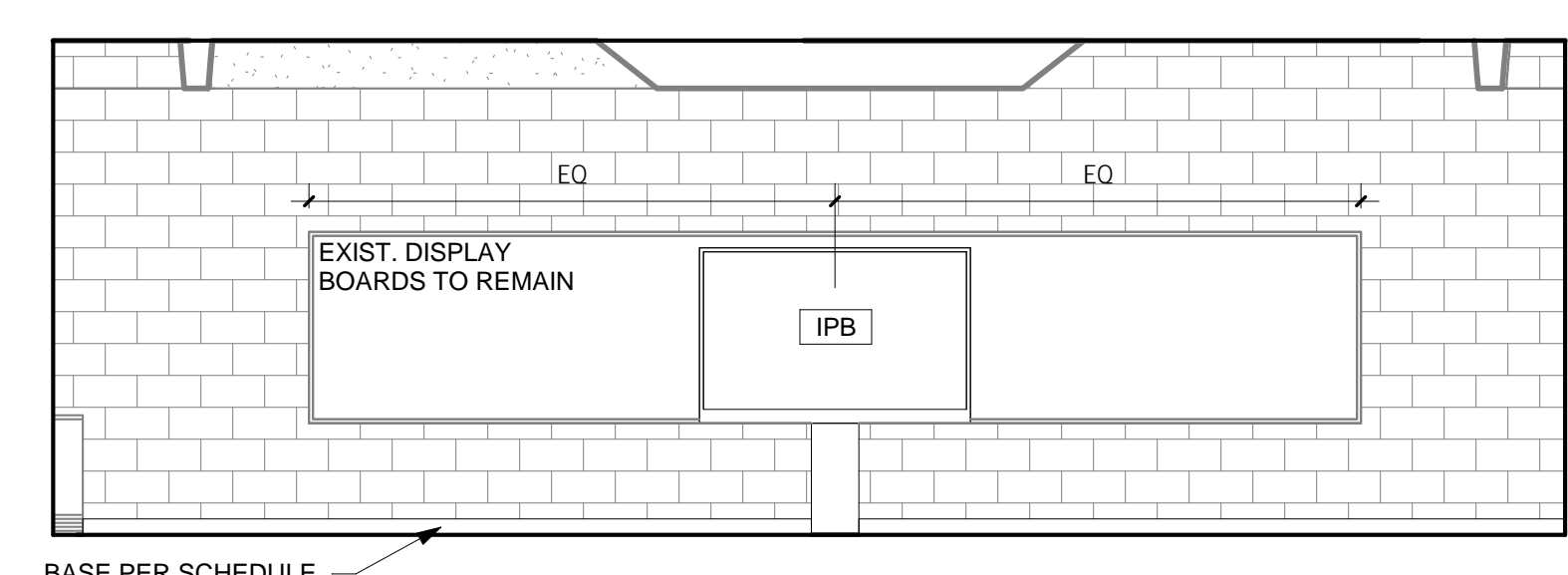
2 WINDOW WALL ELEVATION - RM 113 114 203
SCALE: 1/4" = 1'-0"



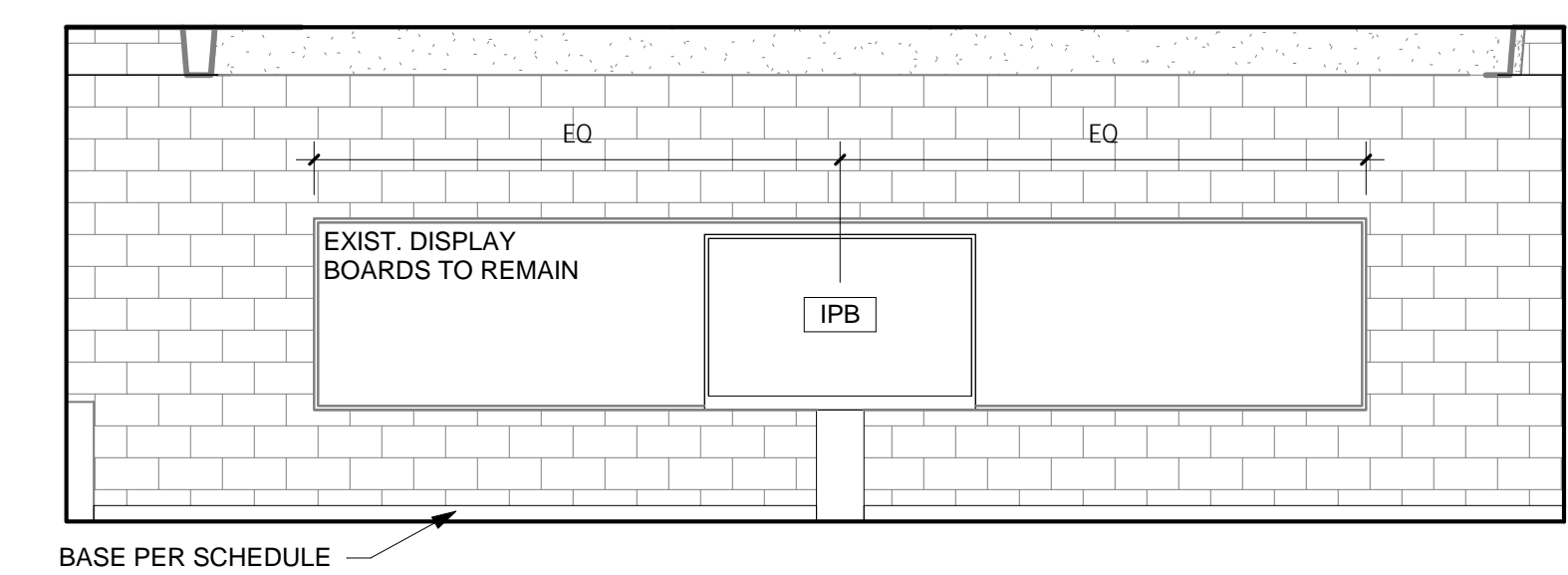
9 TYPICAL SIDE ELEVATION OF ALCOVE
SCALE: 1/4" = 1'-0"



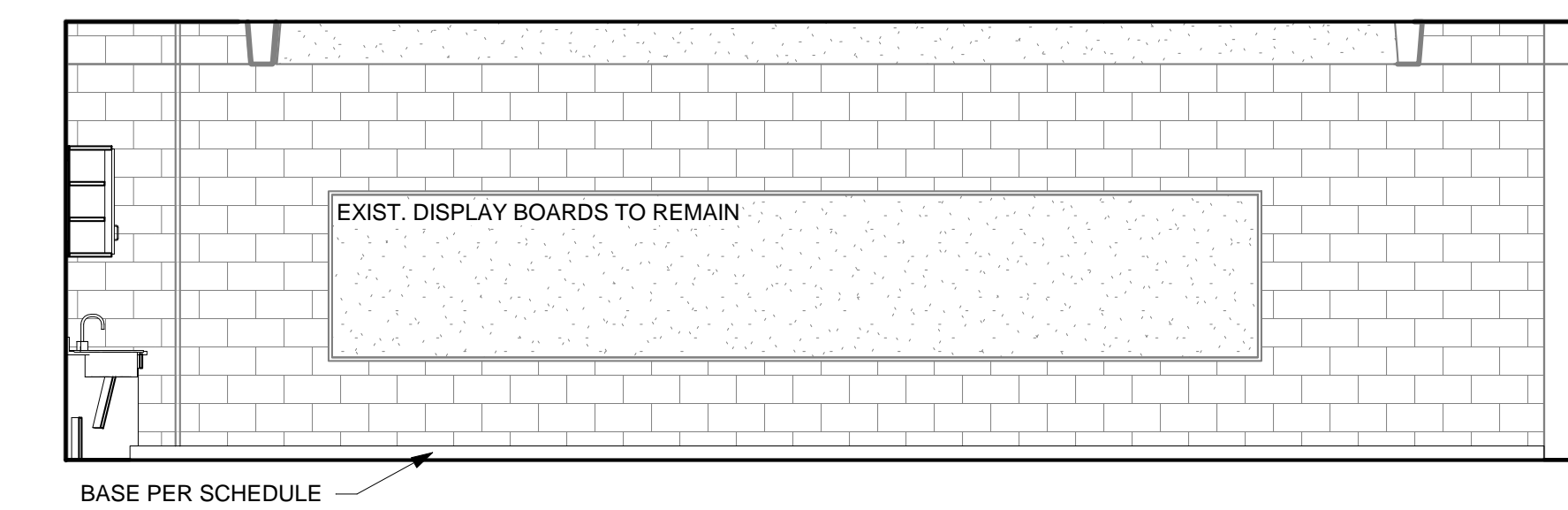
3 TEACHING WALL ELEVATION - RM 113
SCALE: 1/4" = 1'-0"



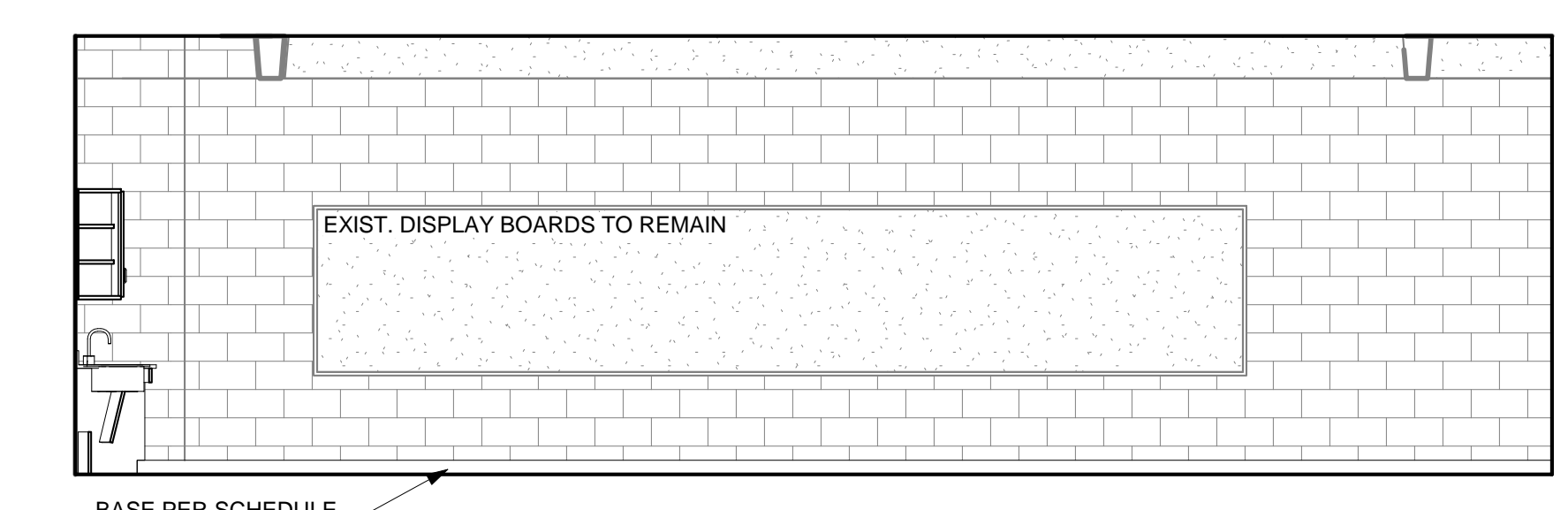
5 TEACHING WALL ELEVATION - RM 114
SCALE: 1/4" = 1'-0"



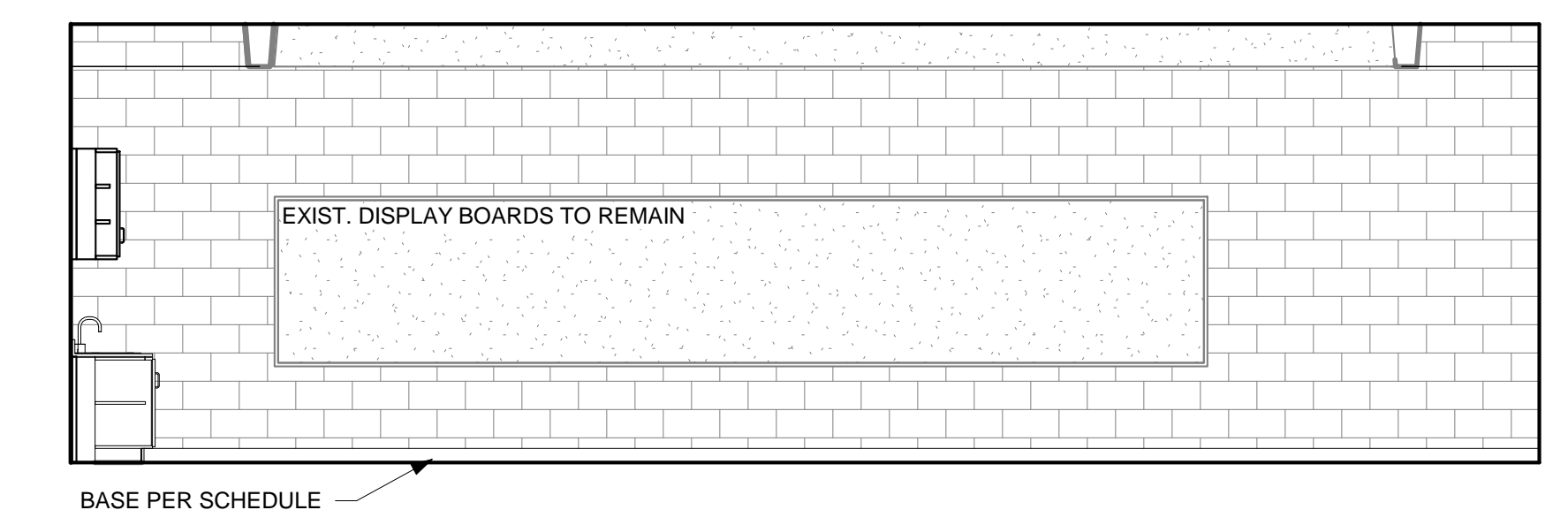
7 TEACHING WALL ELEVATION - RM 203
SCALE: 1/4" = 1'-0"



4 REAR WALL ELEVATION - RM 113
SCALE: 1/4" = 1'-0"



6 REAR WALL ELEVATION - RM 114
SCALE: 1/4" = 1'-0"



8 REAR WALL ELEVATION - RM 203
SCALE: 1/4" = 1'-0"



BID SUBMISSION: JANUARY 16, 2019

10		
9		
8		
7		
6		
5		
4		
3		
2		
1	2/21/19	ADDENDUM 1
NO.	DATE	REVISION

SCHOOL & LOCATION
DR. ETHEL ALLEN ELEMENTARY SCHOOL
3200 W Lehigh Ave.
Philadelphia, PA 19132
PROJECT TITLE

CLASSROOM MODERNIZATION

DRAWING TITLE
INTERIOR ELEVATIONS

DRAWING SCALE As Indicated			
LOCATION NO. XXXX	FILE NO. XXX		
DRAWN BY ACC	CHECKED BY GJC		
GC B-026C	OF 2018 / 19		
PC B-027C	OF 2018 / 19		
EC B-028C	OF 2018 / 19		

DRAWING NO.
A303

SHEET 13 OF 28