

THE SCHOOL DISTRICT OF PHILADELPHIA  
BOARD OF EDUCATION  
Office of Capital Programs  
440 North Broad Street, Third Floor - Suite 371  
Philadelphia, PA 19130-4015

TELEPHONE: (215) 400-4730

**Addendum No. 01**

Subject: **Marin Classroom Modernization Project  
B-024C, B-025C of 2018/19**

Location : **Marin Elementary School  
3<sup>rd</sup> and Ontario Streets  
Philadelphia, PA 19140**

---

This Addendum, ***dated February 2<sup>nd</sup>, 2019***, shall modify and become part of the Contract Documents for the work of this project. Any items not mentioned herein, or affected by, shall be performed strictly in accordance with the original documents.

---

1. Drawings and Specifications Revised by Narrative and by Drawing Reissue: Note drawing text deletions are shown with ~~striketrough~~, drawing text additions are shown in **bold**

a. AD101: ENLARGED DEMO PLAN

DETAIL 1 IS REVISED, SEE AD101 REV 1 ISSUED WITH THIS ADDENDUM.

b. A101: 120,201,202,203,204,205,206,215&217 NEW WORK

DETAIL 1 IS REVISED, SEE A101 REV 1 ISSUED WITH THIS ADDENDUM.

c. A300: CASEWORK SCHEDULE:

**The Casework Schedule is revised as follows:**

**THE BASIS OF DESIGN CABINET SHALL BE CAMPBELL RHEA "EMPIRE" FULL FLUSH OVERLAY WITH SOLID WOOD EDGING. DELETE REFERENCES TO "SIGNATURE" STYLE CABINETS.**

**THE BASIS OF DESIGN MODEL FOR CABINET TYPE CT1 IS CHANGED TO 5866, 35-1/4" (W) X 84" (H) X 22-1/2" (D)**

**THE QUANTITIES AND TYPES OF WALL RAILS AND COAT HOOKS ARE REVISED**

THE ABOVE CHANGES TO THE CASEWORK SCHEDULE ARE SHOWN IN THE REVISED A300-Rev 1 DRAWING ISSUED WITH THIS ADDENDUM.

**ADD TO SCHEDULE AN ADDITIONAL 8 (EIGHT) CT1 CABINETS TO BE PROVIDED ONE IN EACH OF ROOMS 201, 202, 203, 204, 205, 206, 215, 217.**

THE ABOVE CHANGE IS REQUIRED BUT NOT YET SHOWN IN THE SCHEDULE OR

DRAWINGS.

d. A300: WALL EQUIPMENT SCHEDULE:

**The Wall Equipment Schedule is revised as follows:**

DELETE ALL THE NOTES UNDER THE "COMMENTS" COLUMN OF THE SCHEDULE.

**Work in connection with Display Boards shall be conducted as follows:**

**IPBs SHALL BE SUPPLIED AND INSTALLED BY OTHERS UNDER THE DIRECTION OF THE SDP. PROVIDE BLOCKING FOR IPBs AS NECESSARY AND AS INDICATED IN THE DRAWINGS.**

**MARKERBOARDS AND TACKBOARDS SHALL BE SUPPLIED BY THE SDP AND INSTALLED BY THE CONTRACTOR. THE CONTRACTOR SHALL COORDINATE WITH OTHER PRIME CONTRACTORS AND FIELD VERIFY FOR THE BOARDS AND ADVISE SDP OF ANY DISCREPANCY OR INTERFERENCES AFFECTING THE DESIGN INTENT.**

**MARKERBOARD AND TACKBOARD INSERTS SHALL BE SUPPLIED AND INSTALLED BY THE CONTRACTOR**

THE ABOVE CHANGES TO THE WALL EQUIPMENT SCHEDULE ARE SHOWN IN THE REVISED A300-Rev 1 DRAWING ISSUED WITH THIS ADDENDUM.

e. A300: CASEWORK DETAIL:

**Delete "WALL CABINET & COAT HOOK" details**

**Add "WALL CABINET & WALL HOOK DETAIL" and "WALL CABINET & WALL HOOK DETAIL, ENLARGED"**

THE ABOVE CHANGES TO THE CASEWORK DETAILS ARE SHOWN IN THE REVISED A300-Rev 1 DRAWING ISSUED WITH THIS ADDENDUM.

f. A300: SPECIALTY EQUIPMENT SCHEDULE:

**The Specialty Equipment Schedule is revised as follows:**

**VOLTAGES OF NEW EQUIPMENT SHALL BE 120V FOR REFRIGERATOR AND CABINET HOOD; 208V FOR RANGE.**

**Add CABINET HOOD ACCESSORY JXHC1 POWER CORD KIT**

**Add RANGE ACCESSORY POWER CORD AND PLUG**

THE ABOVE CHANGES TO THE SPECIALTY EQUIPMENT SCHEDULE ARE SHOWN IN THE REVISED A300-Rev 1 DRAWING ISSUED WITH THIS ADDENDUM.

g. A302: INTERIOR ELEVATIONS

DETAILS 5, 9, 13, 17, 20 ARE REVISED, SEE A302 REV 1 ISSUED WITH THIS

ADDENDUM.

h. A303: INTERIOR ELEVATIONS

DETAILS 1, 5, 9, ARE REVISED, SEE A303 REV 1 ISSUED WITH THIS ADDENDUM.

i. A600: FINISH SCHEDULE:

**The Finish Schedule is revised as follows:**

DELETE REFERENCE TO LAMINATE FINISHES. NO LAMINATE FINISHES ARE REQUIRED.

j. ED101.0: FIRST FLOOR DEMOLITION PLAN

**For changes see drawing ED101.0 Rev1 dated 2/8/19 issued with this Addendum.**

k. ED102.0: SECOND FLOOR DEMOLITION PLAN

**For changes see drawing ED102.0 Rev1 dated 2/8/19 issued with this Addendum.**

l. E101.0: FIRST FLOOR POWER & SYSTEMS PLAN

**For changes see drawing E101.0 Rev1 dated 2/8/19 issued with this Addendum.**

m. E502.0: PANEL SCHEDULES

**For changes see drawing E502.0 Rev1 dated 2/8/19 issued with this Addendum.**

2. Questions and Clarifications

- .1 **Question:** Will another manufacture besides Campbell Rhea be accepted?

**Response:** Campbell Rhea is the Basis of Design manufacturer. Manufacturers providing equal products may be submitted for review

- .2 **Question:** Can MBE/WBE requirements be reduced to a combined goal?

**Response:** Combined 15/20% Goal already included in the Bidding Documents

- .3 **Question:** Please provide a spec for Electrostatic painting.

**Response:** Specification SECTION 105115: ELECTROSTATIC PAINTING already included in the Technical Specifications.

- .4 **Question:** Spec 101100 Visual Display, 1.2.A, Markerboard and Tackboard infills by GC, plans say by SDP. Who is responsible for them?

**Response:** See Item 1(d) of this Addendum

**.5 Question:** Please confirm all visual display boards supplied by SDP will be delivered to each location by the SDP.

**Response:** Yes, Owner supplied visual display boards will be delivered to the school.

**.6 Question:** Reference spec. 101100 ; Owner supplied visual display units, par. 1.3 B .3 please provide manufacturers installation details

**Response:** Proceed on the basis that the Owner supplied visual display units are similar in type to those listed in specification section 10 1100 VISUAL DISPLAY UNITS and install in accordance with the manufacturer's instructions as described in the specifications.

**.7 Question:** Reference Supplementary Conditions section 16, photographs. Please consider deleting this section from scope of work as it does not seem appropriate or necessary for these type of projects.

**Response:** : Already deleted by Section 01 1400 MODIFICATIONS TO THE GENERAL AND SUPPLEMENTARY CONDITIONS

#### **END OF ADDENDUM NO. 1**

#### **Attachment(s)**

##### **Drawings – AD101 Rev 1**

**A101 Rev 1**

**A300-Rev1**

**A302-Rev1**

**A303-Rev1**

**ED101.0 Rev 1**

**ED102.0 Rev 1**

**E101.0 Rev 1**

**E502.0 Rev 1**

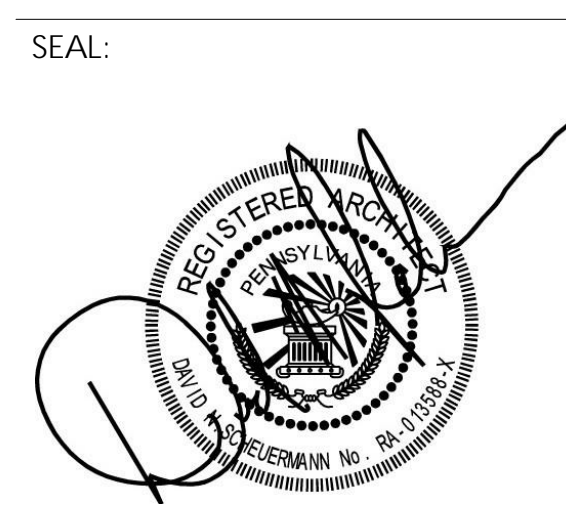


## DEMOLITION GENERAL NOTES

1. ALL EXISTING PARTITIONS ARE TO REMAIN U.N.O. OR SHOWN DASHED
2. DIMENSIONS ARE TO FACE OF WALL FINISH U.N.O.
3. THE CONTRACTOR SHALL DELIVER SALVAGED ITEMS TO THE SCHOOL DISTRICT OF PHILADELPHIA (SDP) AS DIRECTED.
4. DEMOLITION OF ALL WALL MOUNTED DISPLAY BOARDS, CHALKBOARDS, TACKBOARDS, ETC. SHALL BE CARRIED OUT BY THE ABATEMENT CONTRACTOR. SDP BELIEVES THAT THE ADHESIVE USED CONTAINS ASBESTOS.
5. THE G.C. OR, AS NECESSARY, THE ABATEMENT CONTRACTOR SHALL CAREFULLY DISCONNECT AND TAKE DOWN ALL SMART BOARDS AND CEILING MOUNTED SMART PROJECTORS AND TURN OVER TO SDP AS SALVAGED EQUIPMENT
6. THE CONTRACTOR SHALL, AT ALL WALL AND CEILING SURFACES TO REMAIN, PATCH OR FILL ALL VISIBLE EXISTING HOLES, CRACKS AND SIMILAR SURFACE DEFECTS. THE CONTRACTOR SHALL PATCH ANY DAMAGE DUE TO THE DEMOLITION WORK. PATCHING SHALL MATCH EXISTING ADJACENT FINISHES
7. CONTRACTOR SHALL REMOVE ALL LOOSE PAINT, TAPE, ADHESIVE, BRACKETS, HOOKS, ETC., INCLUDING ANY ON THE WALLS AND CEILING ABOVE NEW ACT
8. REMOVE ALL UNUSED OR ABANDONED CONDUIT AND WIRE MOLD

## DEMOLITION KEYNOTES

- D1** REMOVE EQUIPMENT ON THIS WALL, TYPE:
- CB-X CHALKBOARD, OFTEN INCLUDES TACKBOARD ABOVE
  - MB-X MARKERBOARD
  - TB-X TACKBOARD
  - CH-X COAT HOOKS, SHELVING, HARDWARE
- \*X INDICATES LENGTH (VIF)
- D2** REMOVE AND SALVAGE EXISTING INTERACTIVE PANEL BOARD AND PROJECTOR. REMOVE ASSOCIATED MOUNTING EQUIPMENT
- D3** REMOVE EXISTING PARTITION WALL
- D4** REMOVE AND STORE TELEPHONE, TELEPHONE BOX, FOR REINSTALLATION
- D5** REMOVE EXISTING FLOORING AND BASE, TYPE:
- VAT VINYL ASBESTOS TILE, BY ABATEMENT CONTRACTOR
  - CPT CARPET
  - VCT VINYL COMPOSITION TILE
- D6** REMOVE ACOUSTICAL CEILING TILE AND GRID
- D7** REMOVE EXISTING DOOR AND ASSOCIATED HARDWARE, INCLUDING BUT NOT LIMITED TO HINGES, DOOR CLOSERS, AND STRIKE PLATES
- D8** REMOVE PROJECTION SCREENS, HOOKS, AND OTHER EQUIPMENT
- D9** REMOVE SINK AND ASSOCIATED CASEWORK AND SHELVING, INCLUDING ANY MOUNTING BRACKETS. REMOVE AND STORE ALL ACCESSORIES, INCLUDING PAPER TOWEL AND SOAP DISPENSERS, FOR REINSTALLATION
- D10** REMOVE AND STORE TOILET ACCESSORIES, INCLUDING SOAP DISPENSERS, PAPER TOWEL DISPENSERS, TOILET PAPER DISPENSERS, AND MIRRORS, FOR REINSTALLATION
- D11** REMOVE EXISTING WINDOW SHADES, INCLUDING ANY MOUNTING BRACKETS AT EACH WINDOW IN ROOM
- D12** REMOVE EXISTING CASEWORK, INCLUDING ANY MOUNTED HARDWARE
- D13** REMOVE AND REINSTALL HAND SANITIZER DISPENSER
- D14** REMOVE EXISTING CLOCK
- D16** REMOVE AND REINSTALL FIRE EXTINGUISHER
- D17** REMOVE PHONE COVER PLATES ON PHONE BOX

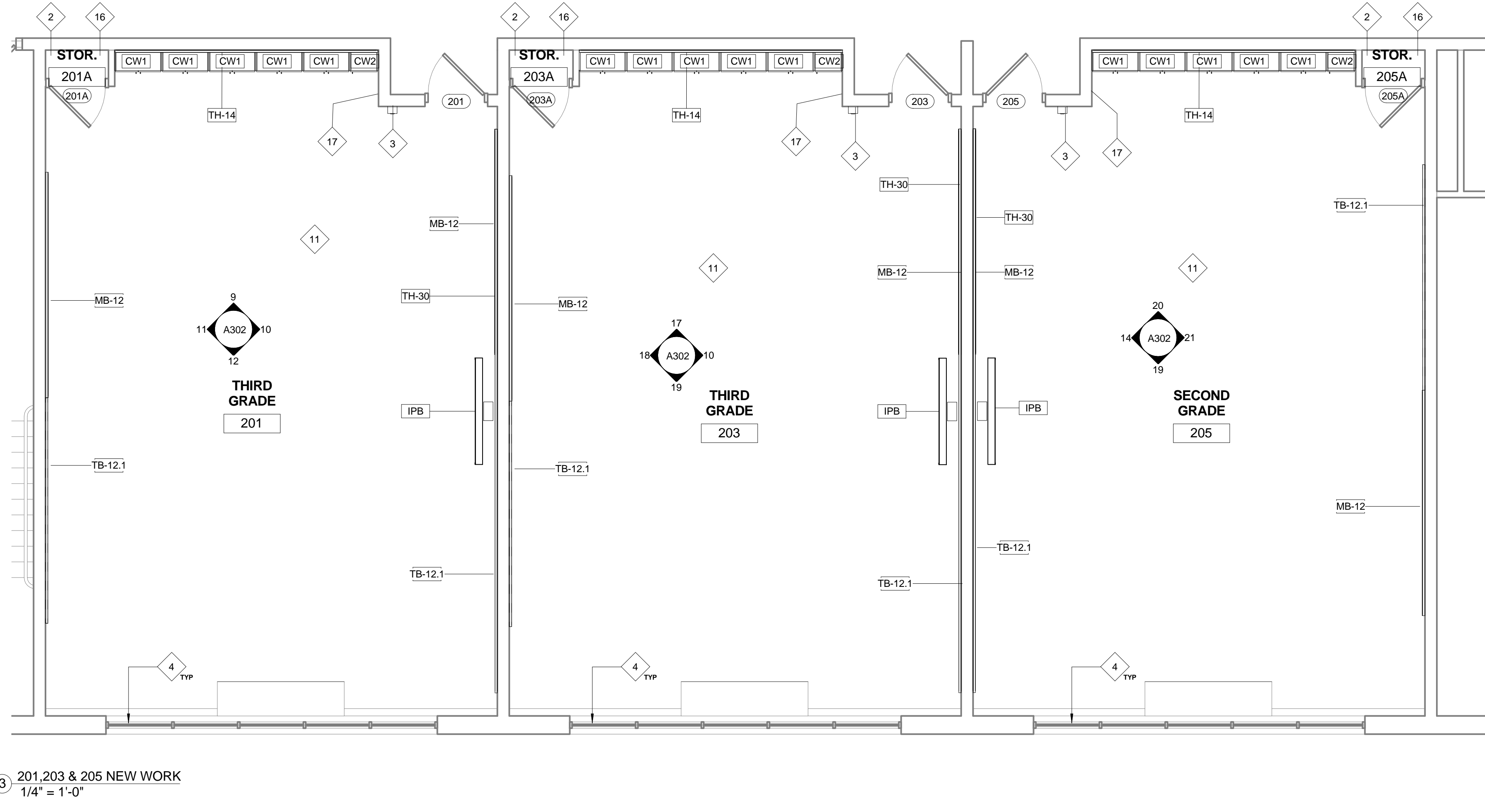
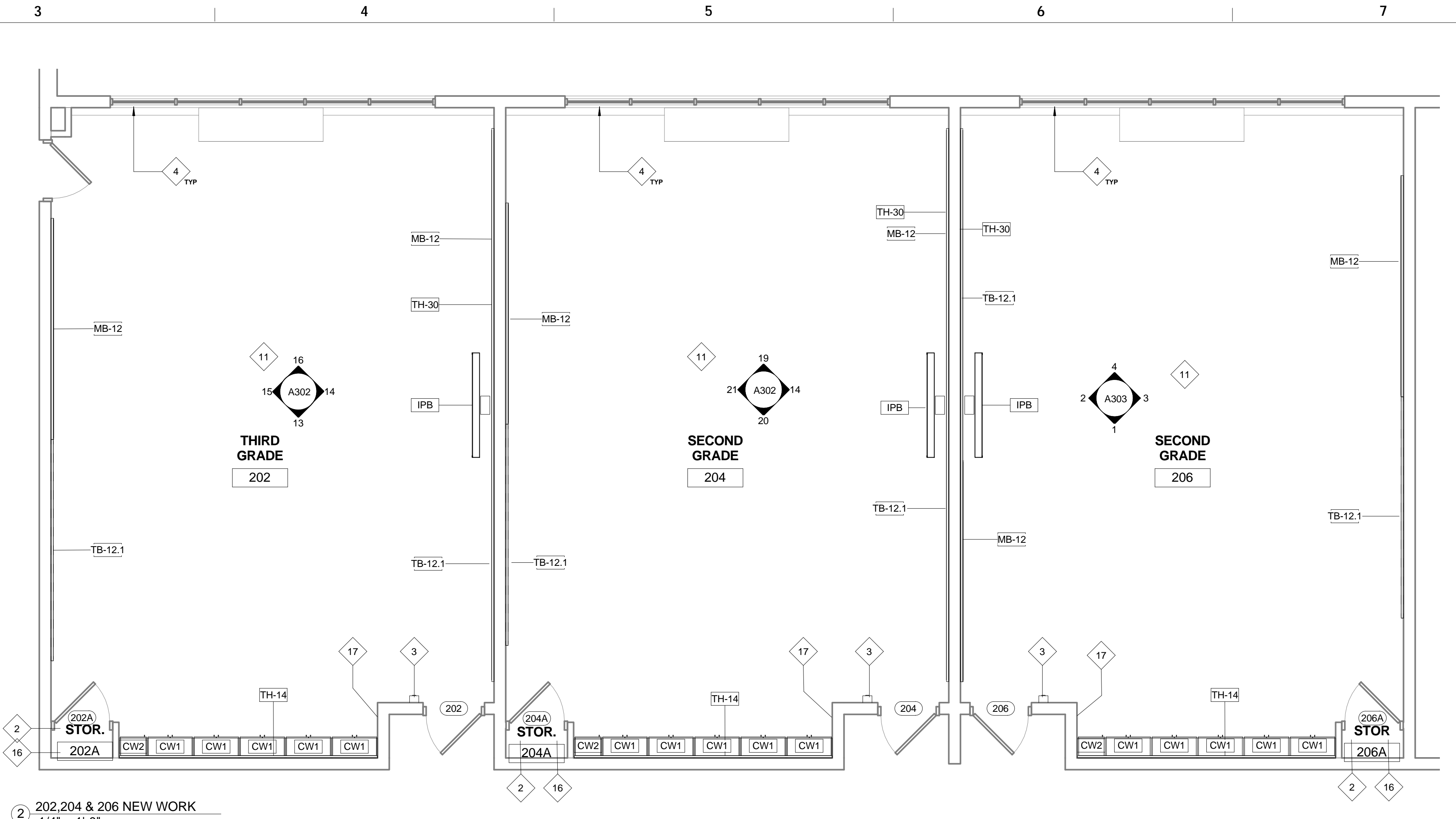
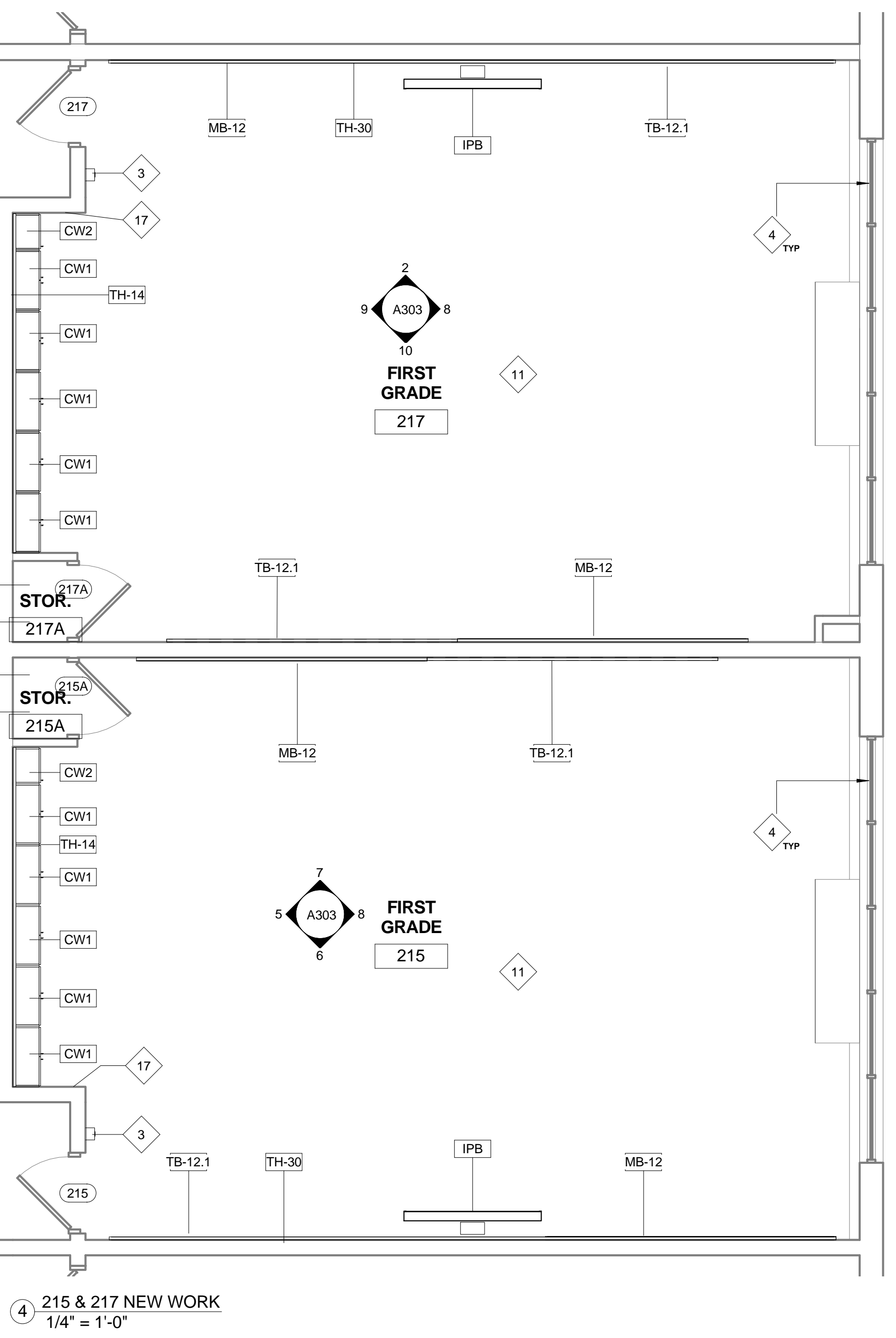
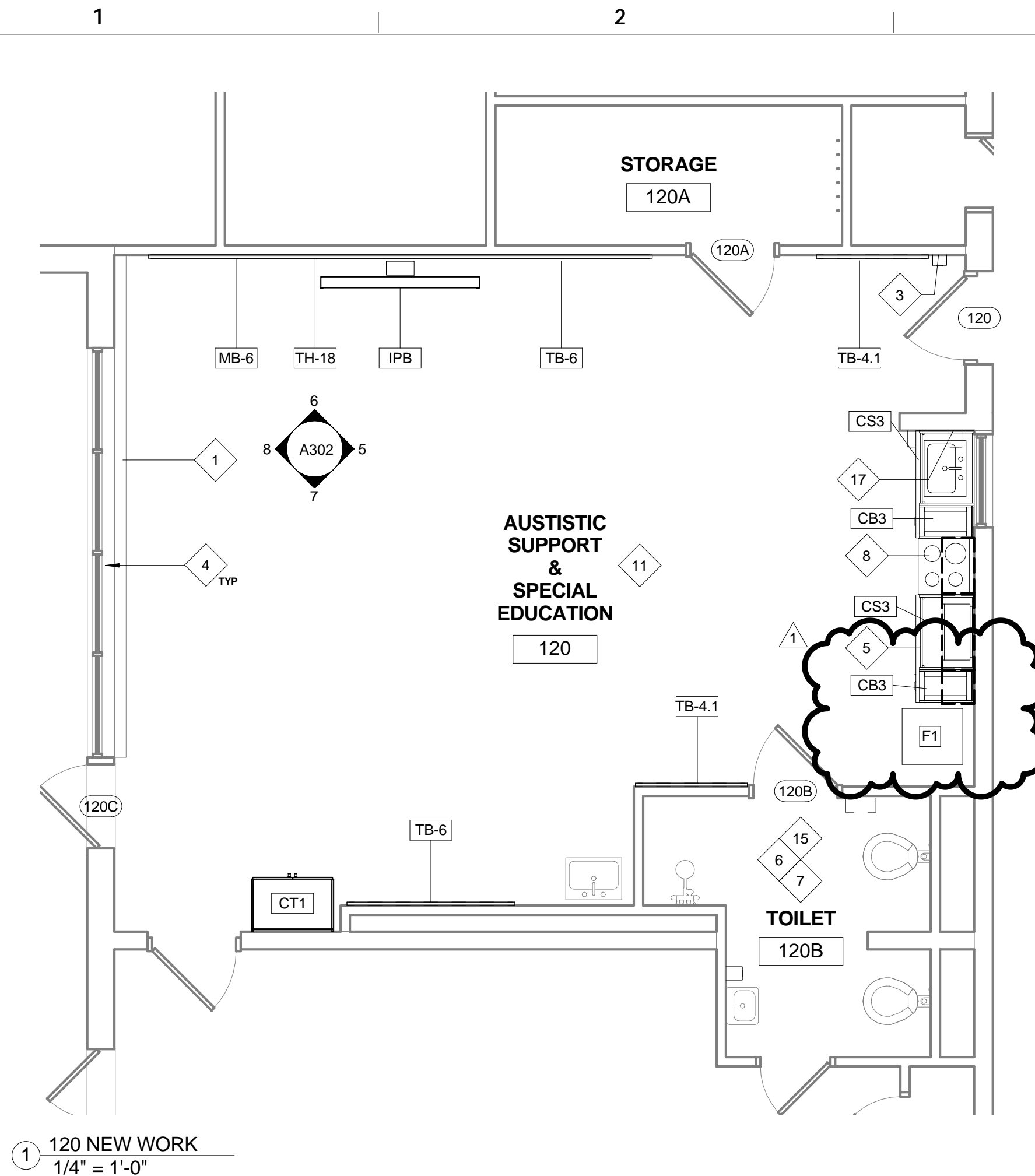


10		
9		
8		
7		
6		
5		
4		
3		
2		
1	2/21/19	ADDENDUM 1
NO.	DATE	REVISION

DRAWING SCALE As Indicated	
LOCATION NO. XXXX	FILE NO. XXX
DRAWN BY AGK	CHECKED BY GJC
GC: B-024 C EC: B-025 C	OF 2018 / 19 2018 / 19



A  
B  
C  
D  
E  
F



GENERAL NOTES

1. SURFACES NOT PREVIOUSLY FIELD PAINTED SHALL NOT BE PAINTED U.N.O AND SHALL BE PROTECTED FROM PAINT APPLIED TO ADJACENT SURFACES.
2. FROM EXISTING SURFACES TO REMAIN, INCLUDING THOSE ON THE INTERIOR OF CABINETS AND CLOSETS, REMOVE TAPE, ADHESIVE RESIDUE, INK RESIDUE, CRAYON RESIDUE, STAPLES AND SIMILAR SURFACE IMPERFECTIONS AND MARKS. WHERE EXISTING SURFACES ARE TO REMAIN UNPAINTED OR ARE NOT REFINISHED THOROUGHLY CLEAN THE SURFACE. SURFACES TO RECEIVE THOROUGH CLEANING SHALL INCLUDE BUT ARE NOT LIMITED TO WINDOW GLAZING, METAL WINDOW FRAMES, WALL BASE, ROOM EQUIPMENT AND ROOM FIXTURES AND FITTINGS.
3. ALL PREVIOUSLY PAINTED SURFACES INCLUDING BUT NOT LIMITED TO WALLS, CEILINGS, SOFFITS, BEAMS, COLUMNS, CLOSET INTERIORS, EXPOSED DUCTWORK, DOORS, DOOR AND WINDOW FRAMES, TRIM, AND SHELVING SYSTEMS SHALL BE REPAINTED U.N.O. SEE FINISH SCHEDULE FOR COLORS.
4. ALL PREVIOUSLY VARNISHED SURFACES INCLUDING BUT NOT LIMITED TO DOORS, CASEWORK, SILLS, TRIM AND SHELVING SHALL BE PREPARED AND REVARNISHED WITH CLEAR VARNISH.
5. WHERE DOORS AND DOOR FRAMES OCCUR BETWEEN AREAS IN THE SCOPE OF WORK AND AREAS NOT IN THE SCOPE OF WORK REFINISH BOTH SIDES.
6. EXISTING AND NEW PIPES, INSULATED PIPES, WIREMOLD, CONDUIT, AND SURFACE MOUNTED JUNCTION BOXES AND THE LIKE SHALL BE PAINTED TO MATCH WALL BEYOND. SEE FINISH SCHEDULE FOR WALL COLOR.

KEYNOTES

- 1 PREPARE AND ELECTROSTATICALLY PAINT UNIT VENTILATORS AND ASSOCIATED PIPE ENCLOSURES
- 2 CLEAN AND REMOVE ALL LOOSE MATERIAL FROM BUILT-IN AND FREESTANDING STORAGE FURNITURE
- 3 REINSTALL PREVIOUS SANITIZER DISPENSER
- 4 NEW ROLLER SHADE FOR EACH WINDOW IN ROOM
- 5 NEW SINK AT EXISTING PLUMBING. SEE PLUMBING DRAWINGS
- 6 REINSTALL PREVIOUS PAPER TOWEL AND SOAP DISPENSERS
- 7 REINSTALL PREVIOUS TOILET ACCESSORIES INCLUDING SOAP DISPENSERS, PAPER TOWEL DISPENSERS, TOILET PAPER DISPENSERS, AND MIRRORS
- 8 NEW SINK COUNTER AND CASEWORK
- 9 NEW CUBBIES
- 10 NEW CASEWORK
- 11 NEW VCT FLOOR TILE
- 12 PROVIDE NEW HAND SANITIZER DISPENSER
- 13 PREPARE AND ELECTROSTATICALLY PAINT EXISTING RECESSED TELEPHONE BOXES TO MATCH DOOR FRAMES
- 14 REFURBISH EXISTING WOOD CASEWORK
- 15 PROTECT EXISTING TILE SURFACES FROM DAMAGE DURING THE COURSE OF THE WORK. THOROUGHLY CLEAN TILE AND GROUT TO REMOVE GRIME, STAINS AND DISCOLORATION
- 16 SAND AND REFINISH EXISTING STORAGE CUPBOARD
- 17 PAINT PHONE BOX TO MATCH NEW WALL PAINT
- 18 NEW SHELF AND BRACKET

LEGEND

- WALL-MOUNTED EDUCATIONAL SURFACE
  - MB-X MARKERBOARD
  - TB-X TACKBOARD
  - TH-X TACKBOARD HEADER
  - TT-X TACK TRACK
- \*X INDICATES TYPE. SEE WALL EQUIPMENT SCHEDULE
- INTERACTIVE PANEL BOARD, NIC
- CASEWORK  
SEE ELEVATIONS AND CASEWORK SCHEDULE FOR TYPES
- EXISTING UNIT VENTILATOR AND PIPE ENCLOSURE

440 NORTH BROAD STREET  
PHILADELPHIA, PA 19130 - 4015  
(215) 400 - 4730 | (215) 400 - 4731 (fax)  
www.philasd.org

SEAL:



NAME (LICENSED PROFESSIONAL) DATE  
STATE AND LICENSE NO. XX/XX/20XX

THE SHEWARD PARTNERSHIP, LLC  
1. 215.751.9301 2300 Chestnut Street  
2. 215.751.9302 Philadelphia, PA 19103

PES  
PRINCETON ENGINEERING SERVICES, PC  
101 Morgan Lane - Suite 205, Plainsboro, NJ 08536  
t. 609.452.9700 www.princetonengineering-services.com

BID DOCUMENT SUBMISSION  
JANUARY 16TH, 2019

10		
9		
8		
7		
6		
5		
4		
3		
2		
1	2/21/19	ADDENDUM 1
NO.	DATE	REVISION

SCHOOL & LOCATION  
**MARIN ELEMENTARY SCHOOL**  
3RD & Ontario Streets,  
Philadelphia, PA 19140

PROJECT TITLE

**CLASSROOM MODERNIZATION**

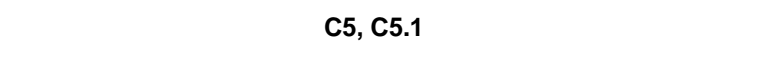
DRAWING TITLE

**120, 201, 202, 203, 204, 205, 206, 215 & 217 NEW WORK**

DRAWING SCALE As Indicated	
LOCATION NO. XXXX	FILE NO. XXX
DRAWN BY AGK	CHECKED BY GJC
GC: B-024 C EC: B-025 C	OF 2018 / 19 2018 / 19

DRAWING NO.  
**A101**  
SHEET 07 OF 27



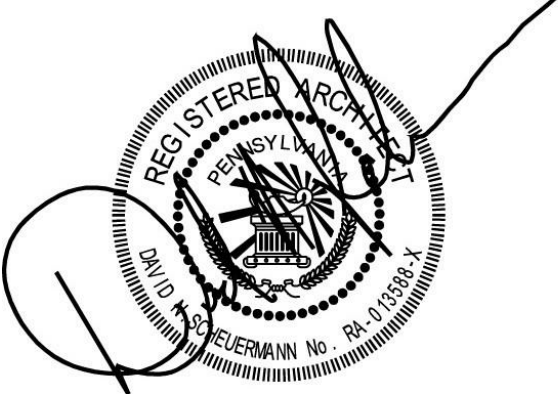
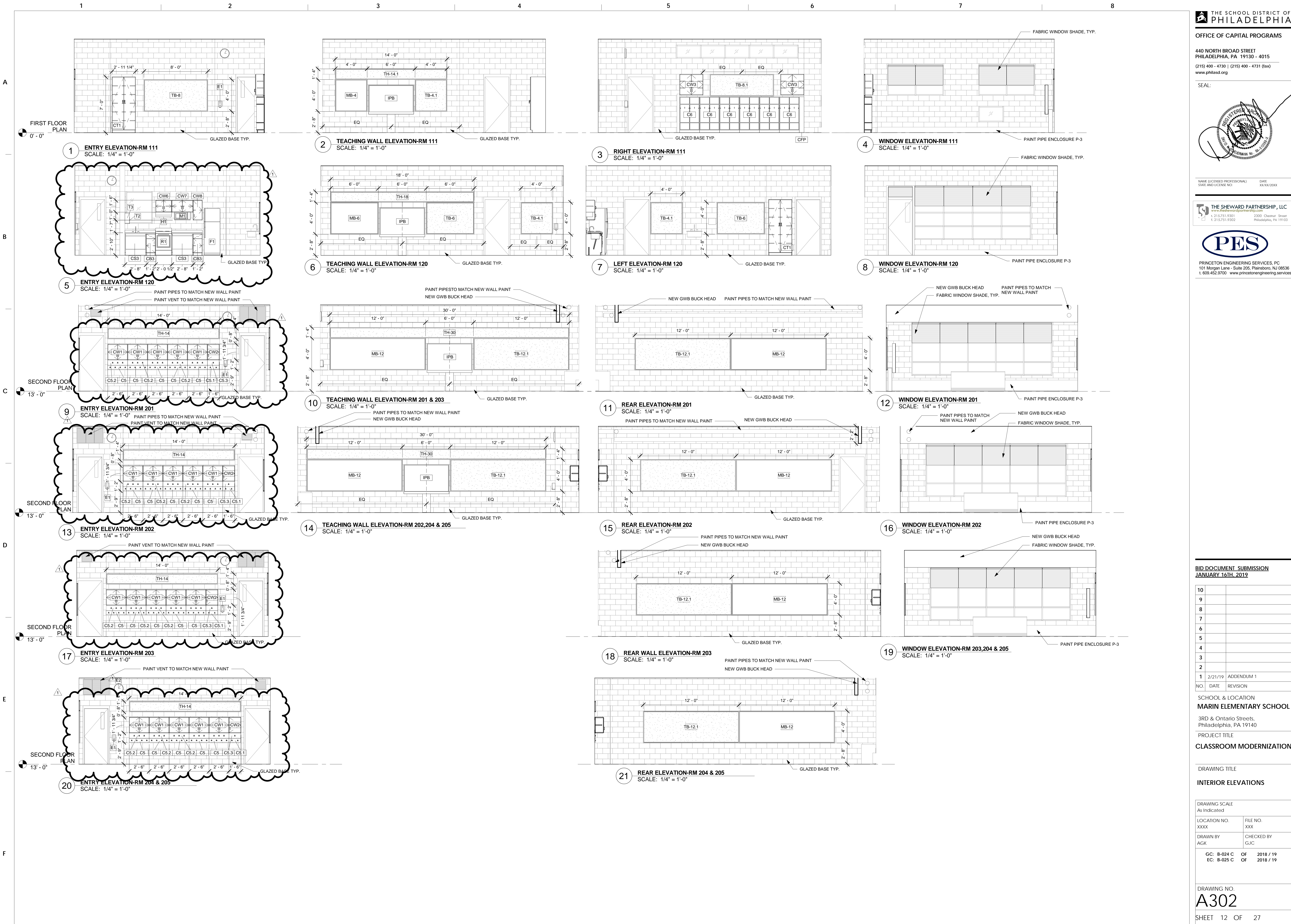
F

1



SHEET 10 OF 27

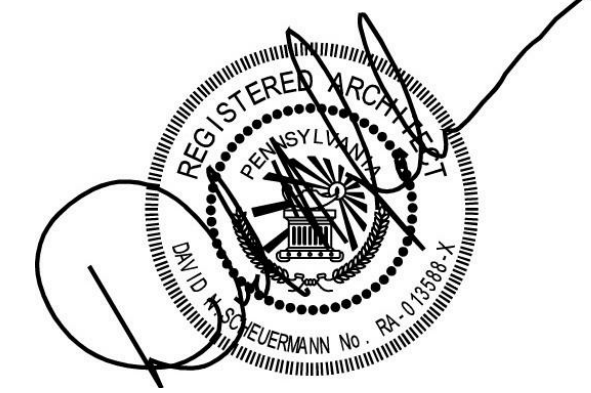
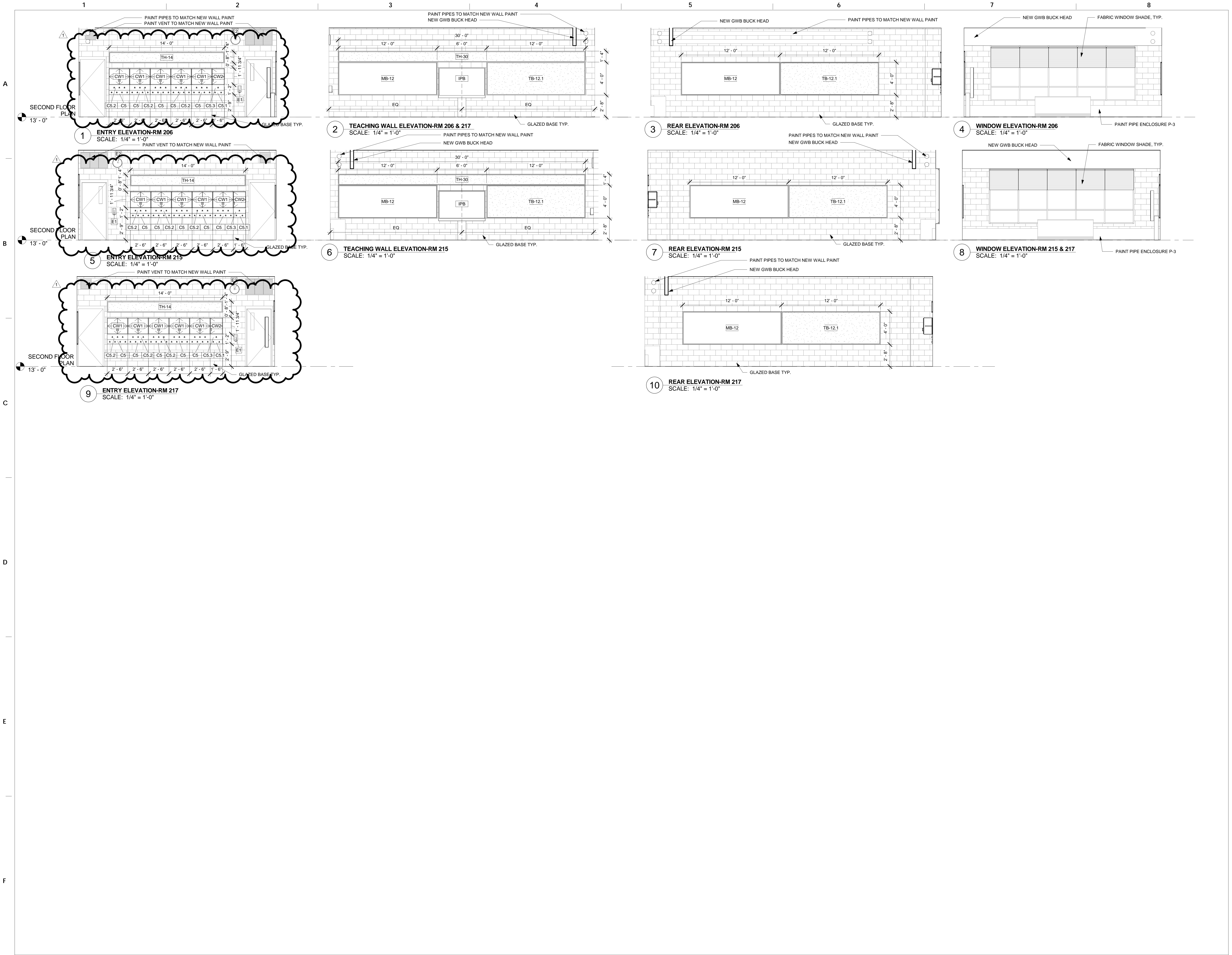




10		
9		
8		
7		
6		
5		
4		
3		
2		
1	2/21/19	ADDENDUM 1
NO.	DATE	REVISION

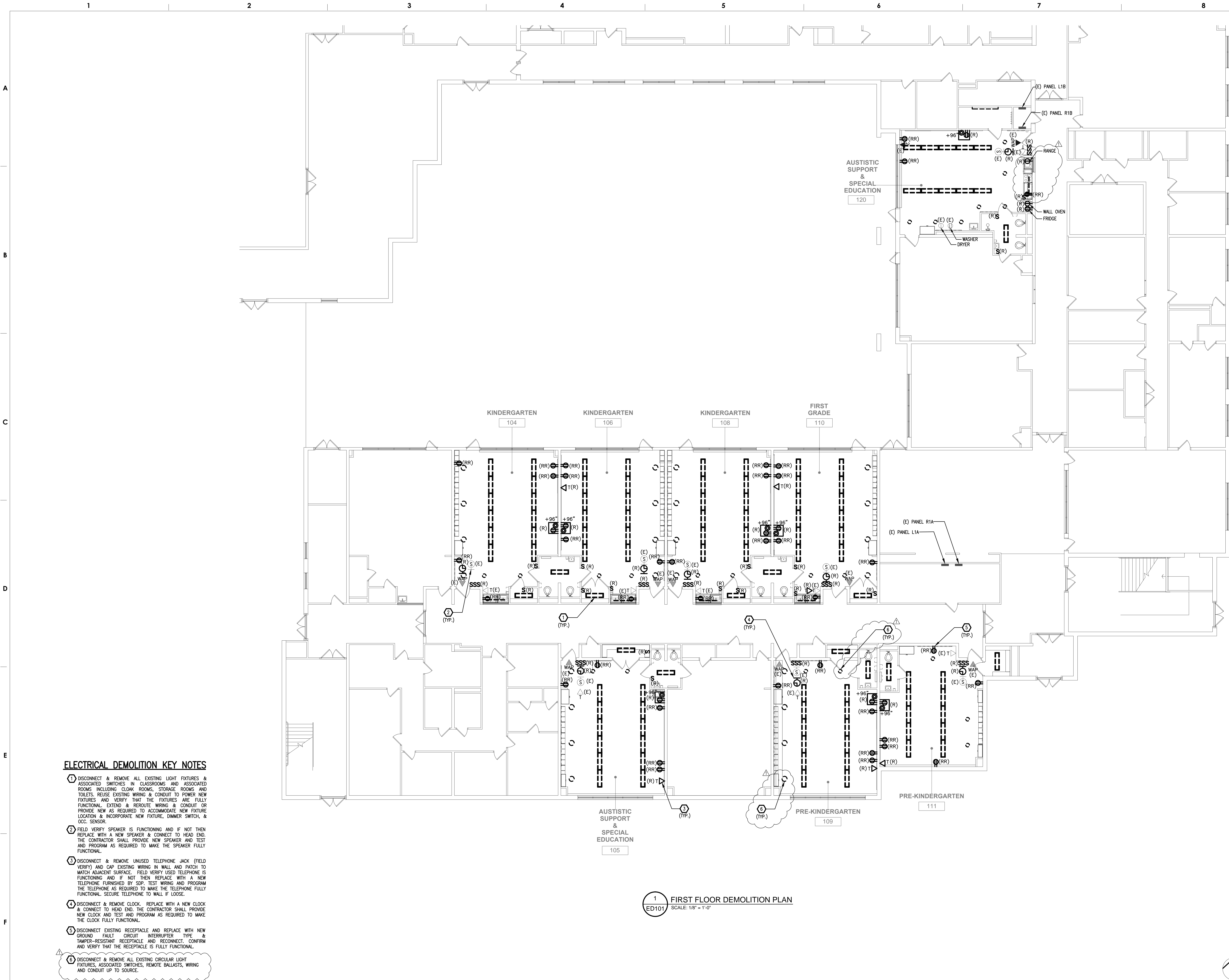
DRAWING SCALE As Indicated	
LOCATION NO. XXXX	FILE NO. XXX
DRAWN BY AGK	CHECKED BY GJC
GC: B-024 C EC: B-025 C	OF 2018 / 19 2018 / 19





10		
9		
8		
7		
6		
5		
4		
3		
2		
1	2/21/19	ADDENDUM 1
NO.	DATE	REVISION

DRAWING SCALE As Indicated	
LOCATION NO. XXXX	FILE NO. XXX
DRAWN BY AGK	CHECKED BY GJC
GC: B-024 C EC: B-025 C	OF 2018 / 19 OF 2018 / 19



**ELECTRICAL DEMOLITION KEY NOTES**

- 1 DISCONNECT & REMOVE ALL EXISTING LIGHT FIXTURES & ASSOCIATED SWITCHES IN CLASSROOMS AND ASSOCIATED ROOMS INCLUDING CLOAK ROOMS, STORAGE ROOMS AND TOILETS. REUSE EXISTING WIRING & CONDUIT TO POWER NEW FIXTURES AND VERIFY THAT THE FIXTURES ARE FULLY FUNCTIONAL. EXTEND & REROUTE WIRING & CONDUIT OR PROVIDE NEW AS REQUIRED TO ACCOMMODATE NEW FIXTURE LOCATION & INCORPORATE NEW FIXTURE, DIMMER SWITCH, & OCC. SENSOR.
- 2 FIELD VERIFY SPEAKER IS FUNCTIONING AND IF NOT THEN REPLACE WITH A NEW SPEAKER & CONNECT TO HEAD END. THE CONTRACTOR SHALL PROVIDE NEW SPEAKER AND TEST AND PROGRAM AS REQUIRED TO MAKE THE SPEAKER FULLY FUNCTIONAL.
- 3 DISCONNECT & REMOVE UNUSED TELEPHONE JACK (FIELD VERIFY) AND CAP EXISTING WIRING IN WALL AND PATCH TO MATCH ADJACENT SURFACE. FIELD VERIFY USED TELEPHONE IS FUNCTIONING AND IF NOT THEN REPLACE WITH A NEW TELEPHONE FURNISHED BY SDP. TEST WIRING AND PROGRAM THE TELEPHONE AS REQUIRED TO MAKE THE TELEPHONE FULLY FUNCTIONAL. SECURE TELEPHONE TO WALL IF LOOSE.
- 4 DISCONNECT & REMOVE CLOCK. REPLACE WITH A NEW CLOCK & CONNECT TO HEAD END. THE CONTRACTOR SHALL PROVIDE NEW CLOCK AND TEST AND PROGRAM AS REQUIRED TO MAKE THE CLOCK FULLY FUNCTIONAL.
- 5 DISCONNECT EXISTING RECEPTACLE AND REPLACE WITH NEW GROUND FAULT CIRCUIT INTERRUPTER TYPE & TAMPER-RESISTANT RECEPTACLE AND RECONNECT. CONFIRM AND VERIFY THAT THE RECEPTACLE IS FULLY FUNCTIONAL.
- 6 DISCONNECT & REMOVE ALL EXISTING CIRCULAR LIGHT FIXTURES, ASSOCIATED SWITCHES, REMOTE BALLASTS, WIRING AND CONDUIT UP TO SOURCE.

**1 FIRST FLOOR DEMOLITION PLAN**  
ED101 SCALE: 1/8" = 1'-0"

**THE SCHOOL DISTRICT OF PHILADELPHIA**  
OFFICE OF CAPITAL PROGRAMS  
440 NORTH BROAD STREET  
PHILADELPHIA, PA 19130 - 4015  
(215) 400 - 4730 | (215) 400 - 4731 (fax)  
www.philasd.org

SEAL:  
**COMMONWEALTH OF PENNSYLVANIA**  
REGISTERED PROFESSIONAL  
**SANJEEV AGARWAL**  
ENGINEER  
No. PES 70557  
DATE 1/16/2019  
SANJEEV AGARWAL, P.E.  
PA PED70557

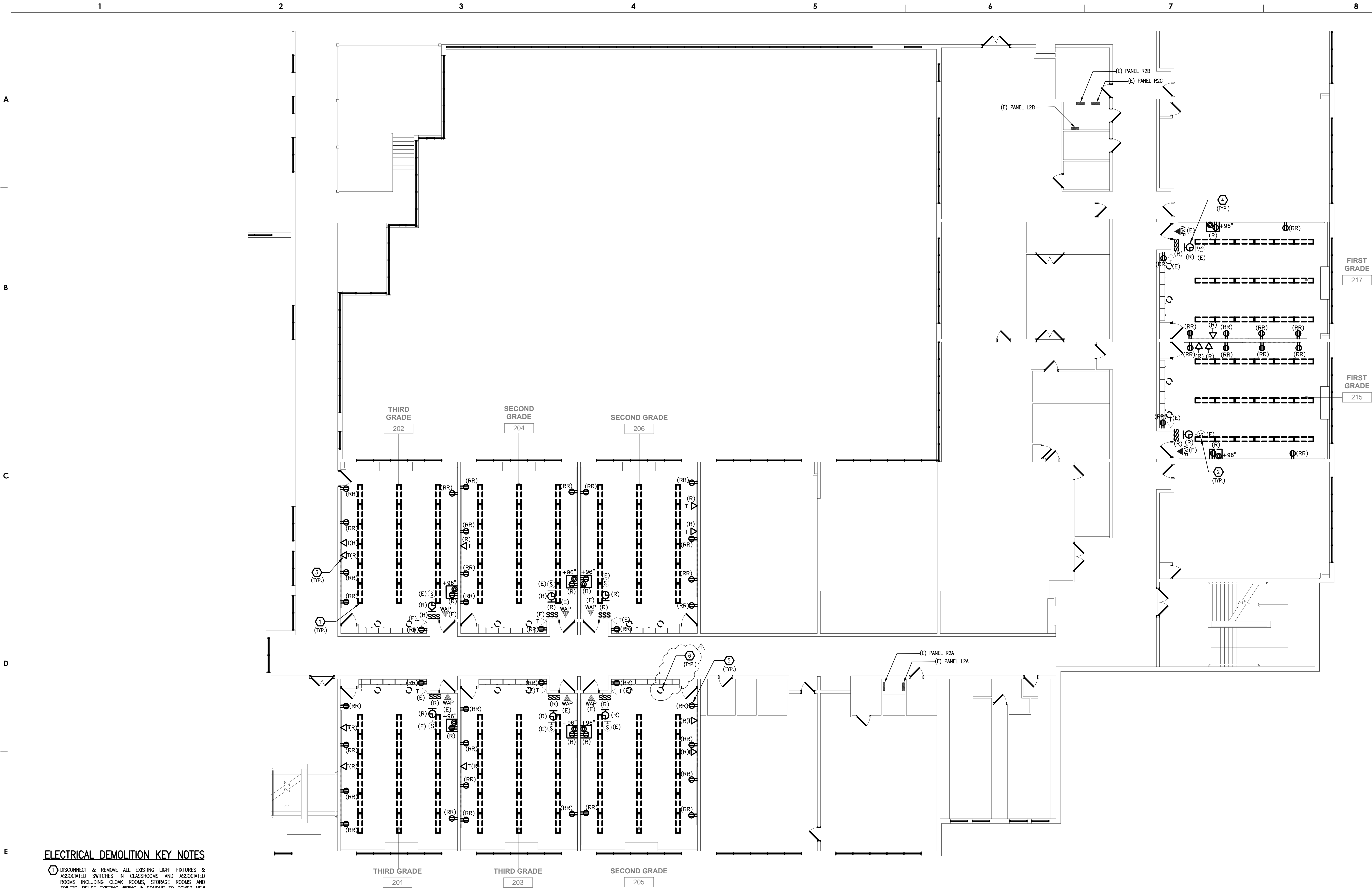
**THE SHEWARD PARTNERSHIP, LLC**  
www.shewardpartnership.com  
t. 215.751.9301 f. 215.751.9302 2300 Chestnut Street Philadelphia, PA 19103

**PES**  
PRINCETON ENGINEERING SERVICES, PC  
101 Morgan Lane - Suite 205, Plainsboro, NJ 08536  
t. 609.452.9700 www.princetonengineering.com

BID SUBMISSION JANUARY 16, 2019		
10		
9		
8		
7		
6		
5		
4		
3		
2		
1	2/22/19	ADDENDUM 1
NO.	DATE	REVISION
SCHOOL & LOCATION <b>Hon. Luis Munoz-Marin</b> 3rd 7 Ontario Street Philadelphia PA, 19140		
PROJECT TITLE <b>CLASSROOM MODERNIZATION</b>		

DRAWING TITLE <b>FIRST FLOOR DEMOLITION PLAN</b>	
DRAWING SCALE AS INDICATED	
LOCATION NO. XXXX	FILE NO. XXX
DRAWN BY NG	CHECKED BY SA
GC B-024 C OF 2018 / 19	EC B-025 C OF 2018 / 19
DRAWING NO. <b>ED - 101.0</b>	
SHEET 19 OF 27	





**ELECTRICAL DEMOLITION KEY NOTES**

- 1 DISCONNECT & REMOVE ALL EXISTING LIGHT FIXTURES & ASSOCIATED SWITCHES IN CLASSROOMS AND ASSOCIATED ROOMS INCLUDING CLOAK ROOMS, STORAGE ROOMS AND TOILETS. REUSE EXISTING WIRING & CONDUIT TO POWER NEW FIXTURES AND VERIFY THAT THE FIXTURES ARE FULLY FUNCTIONAL. EXTEND & REROUTE WIRING & CONDUIT OR PROVIDE NEW AS REQUIRED TO ACCOMMODATE NEW FIXTURE LOCATION & INCORPORATE NEW FIXTURE, DIMMER SWITCH, & OCC. SENSOR.
- 2 FIELD VERIFY SPEAKER IS FUNCTIONING AND IF NOT THEN REPLACE WITH A NEW SPEAKER & CONNECT TO HEAD END. THE CONTRACTOR SHALL PROVIDE NEW SPEAKER AND TEST AND PROGRAM AS REQUIRED TO MAKE THE SPEAKER FULLY FUNCTIONAL.
- 3 DISCONNECT & REMOVE UNUSED TELEPHONE JACK (FIELD VERIFY) AND CAP EXISTING WIRING IN WALL AND PATCH TO MATCH ADJACENT SURFACE. FIELD VERIFY USED TELEPHONE IS FUNCTIONING AND IF NOT THEN REPLACE WITH A NEW TELEPHONE FURNISHED BY SDP. TEST WIRING AND PROGRAM THE TELEPHONE AS REQUIRED TO MAKE THE TELEPHONE FULLY FUNCTIONAL. SECURE TELEPHONE TO WALL IF LOOSE.
- 4 DISCONNECT & REMOVE CLOCK. REPLACE WITH A NEW CLOCK & CONNECT TO HEAD END. THE CONTRACTOR SHALL PROVIDE NEW CLOCK AND TEST AND PROGRAM AS REQUIRED TO MAKE THE CLOCK FULLY FUNCTIONAL.
- 5 DISCONNECT EXISTING RECEPTACLE AND REPLACE WITH NEW TAMPER-RESISTANT RECEPTACLE AND RECONNECT. CONFIRM AND VERIFY THAT THE RECEPTACLE IS FULLY FUNCTIONAL.
- 6 DISCONNECT & REMOVE ALL EXISTING CIRCULAR LIGHT FIXTURES, ASSOCIATED SWITCHES, REMOTE BALLASTS, WIRING AND CONDUIT UP TO SOURCE.

1 SECOND FLOOR DEMOLITION PLAN  
ED102 SCALE: 1/8" = 1'-0"

SEAL:



SANJEEV AGARWAL, P.E.  
PA PED70557 DATE: 1/16/2019

THE SHEWARD PARTNERSHIP, LLC  
www.shewardpartnership.com  
t. 215.751.9301 2300 Chestnut Street  
f. 215.751.9302 Philadelphia, PA 19103



PRINCETON ENGINEERING SERVICES, PC  
101 Morgan Lane - Suite 205, Plainsboro, NJ 08536  
t. 609.452.9700 www.princetonengineering.services

BID SUBMISSION  
JANUARY 16, 2019

10	
9	
8	
7	
6	
5	
4	
3	
2	

1	2/22/19	ADDENDUM 1
NO.	DATE	REVISION

SCHOOL & LOCATION  
**Hon. Luis Munoz-Marin**  
3rd 7 Ontario Street  
Philadelphia PA, 19140

PROJECT TITLE

**CLASSROOM MODERNIZATION**

DRAWING TITLE  
**SECOND FLOOR DEMOLITION  
PLAN**

DRAWING SCALE AS INDICATED	
LOCATION NO. XXXX	FILE NO. XXX
DRAWN BY NG	CHECKED BY SA
GC B-024 C OF 2018 / 19	EC B-025 C OF 2018 / 19

DRAWING NO.  
**ED - 102.0**  
SHEET 20 OF 27





A

B

Designation: <b>R2A</b>				Existing Panel				Main Circuit Breaker				100						
Panel Voltage: 208Y/120Volt 3 Phase 4 wire								Number of Poles:				42						
AIC Rating: 10KAIC																		
FEEDER DATA		CIR NO	LOAD DESCRIPTION	C.B. POLE NO.	C.B. TRIP A	C.B. LOAD VA	PHASE A	PHASE B	PHASE C	C.B. LOA DVA	C.B. TRIP A	C.B. POLE NO.	LOAD DESCRIPTION	FEEDER DATA		CIR. NO.		
No.	WIRE													No.	WIRE		No.	WIRE
(E)	2	12	12	1	CLASSROOM 201+203 RECP	1	20	1280		2520	1280	20	1	CLASSROOM 202+204 RECP	2	12	2	
(E)	2	12	12	3	CLASSROOM 203+205 RECP	1	20	1080		2520	1440	20	1	CLASSROOM 204+206 RECP	2	12	4	
(E)	2	12	12	5	CLASSROOM 205+207 RECP	1	20	1260	1660		400	20	1	CLASSROOM 202 RECP SURGE	2	12	6	
(E)	2	12	12	7	CLASSROOM 209 RECP	1	20	900		1300	400	20	1	CLASSROOM 202 RECP SURGE	2	12	8	
(R1)	2	12	12	9	CLASSROOM 201 RECP SURGE	1	20	400		800	400	20	1	CLASSROOM 204 RECP SURGE	2	12	10	
(E)	2	12	12	11	CLASSROOM 201 RECP SURGE	1	20	400	800		400	20	1	CLASSROOM 204 RECP SURGE	2	12	12	
(R1)	2	12	12	13	CLASSROOM 203 RECP SURGE	1	20	400		800	400	20	1	CLASSROOM 206 RECP SURGE	2	12	14	
(E)	2	12	12	15	CLASSROOM 203 RECP SURGE	1	20	400		1660	1260	20	1	CLASSROOM 208 RECP	2	12	16	
(R1)	2	12	12	17	CLASSROOM 205 RECP SURGE	1	20	400	1200		800	20	1	CLASSROOM 208 RECP SURGE	2	12	18	
(E)	2	12	12	19	CLASSROOM 205 RECP SURGE	1	20	400		800	400	20	1	CLASSROOM 208 RECP SURGE	2	12	20	
(E)	2	12	12	21	CLASSROOM 207 RECP SURGE	1	20	400		800	400	20	1	CLASSROOM 208 RECP SURGE	2	12	22	
(E)	2	12	12	23	CLASSROOM 209 RECP SURGE	1	20	400	800		400	20	1	CLASSROOM 208 RECP SURGE	2	12	24	
(E)	2	12	12	25	BATHROOMS GR RECP	1	20	900		1400	500	20	1	BOOK SECURITY	2	12	26	
(E)	2	12	12	27	WATER COOLER	1	20	500			900	400	20	1	CLASSROOM 208 RECP SURGE	2	12	28
(E)	2	12	12	29	ATC BATHROOM CONTROLLER	1	20	200	600		400	20	1	CLASSROOM 208 RECP SURGE	2	12	30	
(E)	2	12	12	31	BASEBOARD HEATERS	1	20	800		1600	800	20	1	CLASSROOM 216A RECP SURGE	2	12	32	
(E)	2	12	12	33	HALLWAY RECP	1	20	1200		1600	400	20	1	CLASSROOM 208 RECP SURGE	2	12	34	
(E)	2	12	12	35	BATHROOM UNIT HEATERS	1	20	260	260		20	20	1	SPARE	2	12	36	
(E)	2	12	12	37	DISPLAY CASE	1	20	400		800	400	20	1	CLASSROOM 206 RECP SURGE	2	12	38	
(E)				39	SPARE	1	20			360	360	20	1	CLASSROOM 214A RECP	2	12	40	
(E)				41	SPARE	1	20		0		20	20	1	SPARE	2	12	42	
Panel Type: Nema 1				Phase Conn. 5320 9220 8640 VA				Remarks:										
Mounting: Surface				Total Connected Load 23 KVA 64 AMPS														
Location: 2ND FLOOR IN RM 209B				Bus Size 100														
Fed From: MDP in Basement				Voltage 208														

1 EXISTING PANELS (DEMOLITION)  
SCALE: NONE

(R1) EXISTING BREAKER AND WIRING TO REMAIN AND SHALL BE EXTENDED (WIRING AND CONDUIT) AS REQUIRED TO FEED NEW RECEPTACLES AND LIGHTS.

C

D

Designation: <b>R2A</b>										Existing Panel				Main Circuit Breaker				<b>100</b>			
Panel Voltage: <b>208Y/120Volt 3 Phase 4 wire</b>										Number of Poles: <b>42</b>											
AIC Rating: <b>10KAIC</b>																					
FEEDER DATA			CIR NO	LOAD DESCRIPTION	C.B. POLE NO.	C.B. TRIP A	C.B. LOAD VA	PHASE A	PHASE B	PHASE C	C.B. LOA DVA	C.B. TRIP A	C.B. POLE NO.	LOAD DESCRIPTION	FEEDER DATA			CIR. NO.			
No.	WIRE	GND													No.	WIRE	GND				
N	2	12	1	CLASSROOM 201+203 RECP	1	20	1280		2520		1280	20	1	CLASSROOM 202+204 RECP	2	12	2				
	2	12	3	CLASSROOM 203+205 RECP	1	20	1080			2520	1440	20	1	CLASSROOM 204+206 RECP	2	12	4				
	2	12	5	CLASSROOM 205+207 RECP	1	20	1260	2340			1080	20	1	CLASSROOM 202 RECP	2	12	6				
N	2	12	7	CLASSROOM 209 RECP	1	20	900		1300		400	20	1	CLASSROOM 202 RECP SURGE	2	12	8				
	2	12	9	CLASSROOM 201 RECP	1	20	1080			2160	1080	20	1	CLASSROOM 204 RECP	2	12	10				
	2	12	11	CLASSROOM 201 RECP SURGE	1	20	400	800			400	20	1	CLASSROOM 204 RECP SURGE	2	12	12				
N	2	12	13	CLASSROOM 203 RECP	1	20	1080			2160	1080	20	1	CLASSROOM 206 RECP	2	12	14				
	2	12	15	CLASSROOM 203 RECP SURGE	1	20	400			1660	1260	20	1	CLASSROOM 208 RECP	2	12	16				
	2	12	17	CLASSROOM 205 RECP	1	20	1080	1880			800	20	1	CLASSROOM 208 RECP SURGE	2	12	18				
N	2	12	19	CLASSROOM 205 RECP SURGE	1	20	400		800		400	20	1	CLASSROOM 208 RECP SURGE	2	12	20				
	2	12	21	CLASSROOM 207 RECP SURGE	1	20	400			800	400	20	1	CLASSROOM 208 RECP SURGE	2	12	22				
	2	12	23	CLASSROOM 209 RECP SURGE	1	20	400	800			400	20	1	CLASSROOM 208 RECP SURGE	2	12	24				
N	2	12	25	BATHROOMS GR RECP	1	20	900		1400		500	20	1	BOOK SECURITY	2	12	26				
	2	12	27	WATER COOLER	1	20	500			900	400	20	1	CLASSROOM 208 RECP SURGE	2	12	28				
	2	12	29	ATC BATHROOM CONTROLLER	1	20	200	600			400	20	1	CLASSROOM 208 RECP SURGE	2	12	30				
N	2	12	31	BASEBOARD HEATERS	1	20	800		1600		800	20	1	CLASSROOM 216A RECP SURGE	2	12	32				
	2	12	33	HALLWAY RECP	1	20	1200			1600	400	20	1	CLASSROOM 208 RECP SURGE	2	12	34				
	2	12	35	BATHROOM UNIT HEATERS	1	20	260	260			20	20	1	SPARE	2	12	36				
N	2	12	37	DISPLAY CASE	1	20	400		800		400	20	1	CLASSROOM 206 RECP SURGE	2	12	38				
	39	SPARE	1	20						360	360	20	1	CLASSROOM 214A RECP	2	12	40				
	41	SPARE	1	20		0						20	1	SPARE	2	12	42				
Panel Type: <b>Nema 1</b>					Phase Conn. <b>6680 10580 10000</b>					<b>VA 76 AMPS</b>					Remarks:						
Mounting: <b>Surface</b>					Total Connected Load <b>27 KVA</b>																
Location: <b>2ND FLOOR IN RM 209B</b>					Bus Size <b>100</b>																
Fed From: <b>MDP in Basement</b>					Voltage <b>208</b>																

2 EXISTING PANELS (NEW WORK)  
SCALE: NONE

(N) INDICATES EXISTING CIRCUIT SHALL BE REWIRED TO NEW RECEPTACLES AND LIGHTS.

E

F

Designation: <b>ITP1</b>										<b>New Panel</b>				Main Circuit Breaker <b>60</b>				
Panel Voltage: <b>208Y/120Volt 3 Phase 4 wire</b>														Number of Poles: <b>18</b>				
AIC Rating: <b>10KAIC</b>																		
FEEDER DATA			CIR NO	LOAD DESCRIPTION	C.B. POLE NO.	C.B. TRIP A	C.B. LOAD VA	PHASE A	PHASE B	PHASE C	C.B. LOA DVA	C.B. TRIP A	C.B. POLE NO.	LOAD DESCRIPTION	FEEDER DATA			CIR. NO.
No.	WIRE	GND													No.	WIRE	GND	
2	12		1	CLASSROOM 104 RECP	1	20	1080	2160			1080	20	1	CLASSROOM 120 RECP	2	12	2	
2	12		3	CLASSROOM 105 RECP	1	20	1080		1980		900	20	1	CLASSROOM 120 RECP	2	12	4	
2	12		5	CLASSROOM 106 RECP	1	20	1080			1980	900	20	1	FRIDGE RM 120	2	12	6	
2	12		7	CLASSROOM 108 RECP	1	20	1080	4280			3200	40	2	RANGE RM 120	3	8	8	
2	12		9	CLASSROOM 108 RECP	1	20	1080		4280		1980	900	20	1	MICROWAVE RM 120	2	12	12
2	12		11	CLASSROOM 110 RECP	1	20	1080			1980	900	20	1	CABINET HOOD RM 120	2	12	14	
			15	SPARE	1	20	1080	2160		0		20	1	SPARE			16	
			17	SPARE	1	20				0		20	1	SPARE			18	
Panel Type: <b>Nema 1</b>										Phase Conn. <b>8600 6260 3960 VA</b>				Remarks:				
Mounting: <b>Surface</b>										Total Connected Load <b>19 KVA 52 AMPS</b>								
Location: <b>1ST FLOOR IN RM 114</b>										Bus Size <b>125</b>				PROVIDE PANEL WITH INTEGRAL TVSS				
Fed From: <b>R1A BUS</b>										Voltage <b>208</b>								

3 NEW PANELS  
SCALE: NONE

Designation: <b>R2B</b>				Existing Panel				Main Circuit Breaker <b>100</b>								
Panel Voltage: <b>208Y/120Volt 3 Phase 4 wire</b>								Number of Poles: <b>42</b>								
AIC Rating: <b>10KAIC</b>																
FEEDER DATA		CIR NO	LOAD DESCRIPTION	C.B. POLE NO.	C.B. TRIP A	C.B. LOAD VA	PHASE A	PHASE B	PHASE C	C.B. LOA DVA	C.B. TRIP A	C.B. POLE NO.	LOAD DESCRIPTION	FEEDER DATA	CIR NO	
No	WIRE	GND												No	WIRE	GND
2	12	12	1	CLASSROOM 213+215 RECP	1	20	1260	2700		1440	20	1	CLASSROOM 218 RECP	2	12	12
2	12	12	3	CLASSROOM 215+217 RECP	1	20	1260		1660	400	20	1	CLASSROOM 218A RECP SURGE	2	12	12
2	12	12	5	CLASSROOM 219 RECP	1	20	1080			1980	800	20	1	CLASSROOM 220 RECP	2	12
2	12	12	7	CLASSROOM 221 RECP	1	20	900	1300		400	20	1	CLASSROOM 220 RECP SURGE	2	12	12
2	12	12	9	CLASSROOM 213 RECP SURGE	1	20	400		1300	800	20	1	CLASSROOM 222+224 RECP	2	12	12
2	12	12	11	CLASSROOM 213 RECP SURGE	2	20	400		600	200	20	1	DAMPERS	2	12	12
2	12	12	13	CLASSROOM 215 RECP SURGE	1	20	400	600		200	20	1	DDCS	2	12	12
2	12	12	15	CLASSROOM 215 RECP SURGE	1	20	400		1120	720	20	1	CLASSROOM 227 RECP	2	12	12
2	12	12	17	CLASSROOM 217 RECP SURGE	1	20	400		800	400	20	1	CLASSROOM 227 RECP SURGE	2	12	12
2	12	12	19	CLASSROOM 217 RECP SURGE	2	20	400		600	400	20	1	CLASSROOM 227 RECP SURGE	2	12	12
2	12	12	21	CLASSROOM 219 RECP SURGE	1	20	400	600		200	20	1	DDC	2	12	12
2	12	12	23	CLASSROOM 219 RECP SURGE	1	20	400		1480	1080	20	1	NORTH SIDE CORRIDOR RECP	2	12	12
2	12	12	25	CLASSROOM 221 RECP SURGE	1	20	400	1480		1080	20	1	WEST SIDE CORRIDOR RECP	2	12	12
2	12	12	27	CLASSROOM 221 RECP SURGE	1	20	400		940	800	20	1	RECP	2	12	12
2	12	12	29	CLASSROOM 221 RECP SURGE	2	20	500		1400	500	20	1	WATER COOLERS RM 223	2	12	12
2	12	12	31	CLASSROOM 223 RECP SURGE	1	20	400	800		400	20	1	RECP SURGE	2	12	12
2	12	12	33	CLASSROOM 216A RECP	1	20	720	1120		400	20	1	RECP SURGE	2	12	12
2	12	12	35	DISPLAY CASE BY 226	1	20	700		1100	400	20	1	CLASSROOM 224 RECP SURGE	2	12	12
39			39	SPARE	1	20		400	3840	3840	20	1	RECP SURGE	2	12	12
41			41	SPARE	1	20			0		20	1	DIMMER BANK PANEL	2	12	12
					1	20					20	1	SPARE	2	12	12
Panel Type: <b>Nema 1</b>				Phase Conn. <b>8080 10580 7360 VA</b>				Remarks:								
Mounting: <b>Surface</b>				Total Connected Load <b>26 KVA 72 AMPS</b>												
Location: <b>2ND FLOOR IN RM 220C</b>				Bus Size <b>100</b>												
Fed From: <b>MDP in Basement</b>				Voltage <b>208</b>												