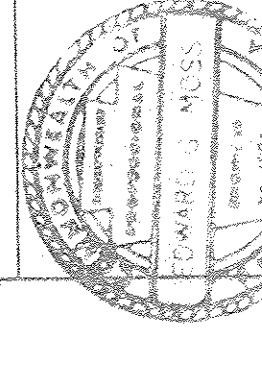


SECTION A-A
SCALE 1/4" = 1'-0"

SECTION B-B
SCALE 1/4" = 1'-0"

BOILER ROOM PLAN
SCALE 1/4" = 1'-0"

REVISIONS	NO.	DATE

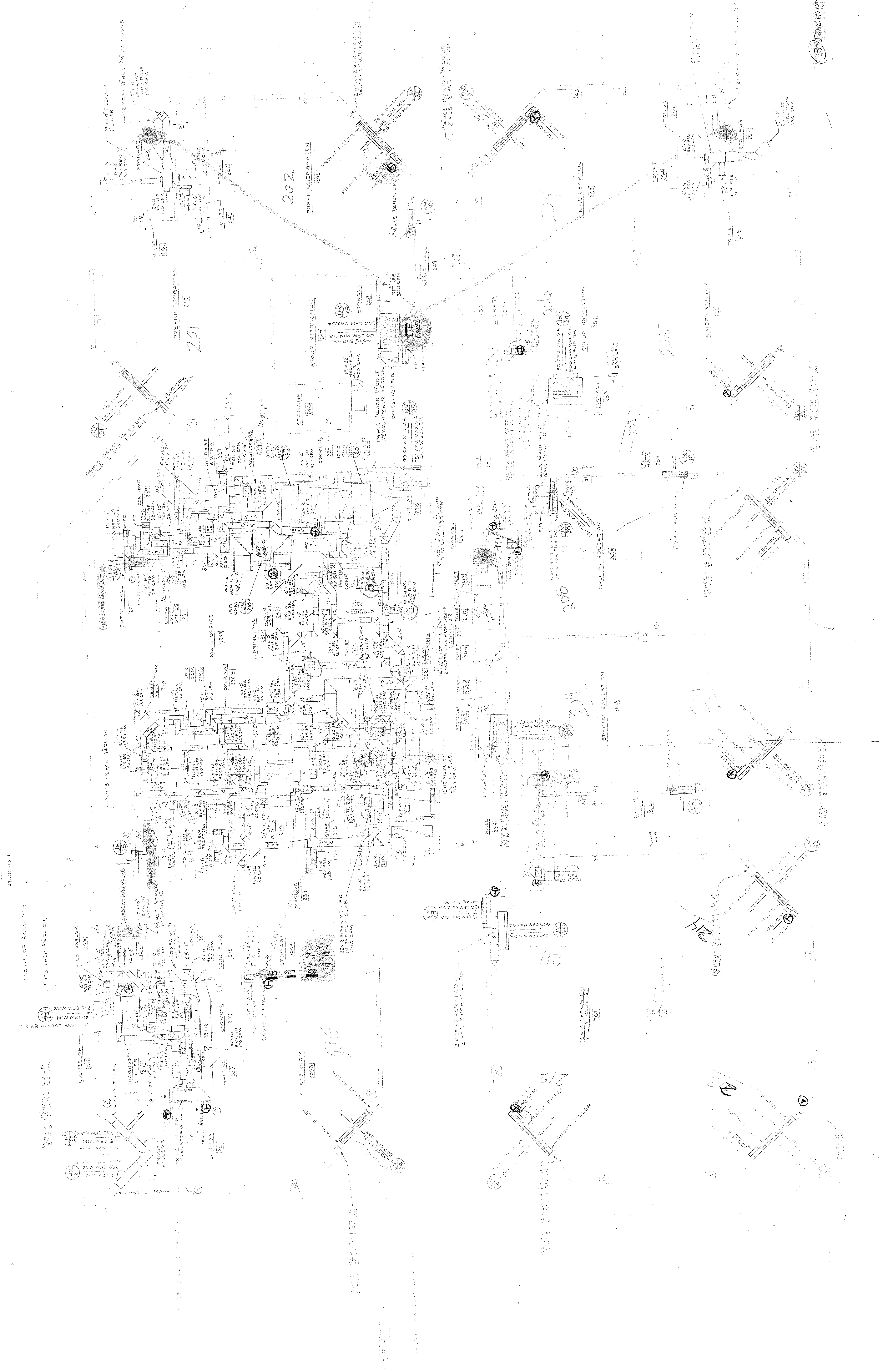


NEW LEWIS ELKIN PUBLIC SCHOOL
ALLEGHENY AVENUE AT 10th STREET
SCHOOL DISTRICT OF PHILADELPHIA
THE BOARD OF EDUCATION
BORN FRIEND & COX A.I.A. ARCHITECTS
210 SOUTH 13th STREET, PHILADELPHIA, PA. 19107
JOSEPH L. HOFFMANN STRUCTURAL ENGINEER
STEWART A. JELLET CO. MECH. & ELEC. ENGINEERS

PROJECT NO. 46-111
SHEET NO. 27B
DATE: E.S.M.
SCALE: BOILER ROOM & DETAILS

SECTION C-C
SCALE 1/4" = 1'-0"

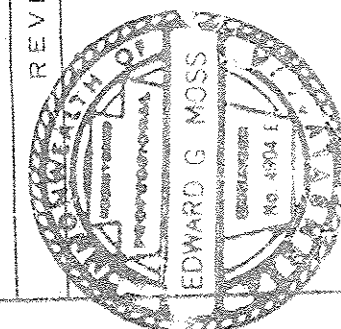
SECTION D-D
SCALE 1/4" = 1'-0"



SECOND LEVEL PLAN
SCALE: 1/8" = 1'-0"

PROJECT NO. AF6101
 NEW LEWIS ELKIN PUBLIC SCHOOL
 ALLEGHENY AVENUE AT 10TH STREET
 SCHOOL DISTRICT OF PHILADELPHIA
 THE BOARD OF EDUCATION
 BORNFRIEND & COX A.I.A. ARCHITECTS
 210 SOUTH 19TH STREET, PHILADELPHIA, PA. 19101
 JOSEPH L. HOFFMANN, STRUCTURAL ENGINEER
 STEWART A. JELLET CO. MECH. & ELECTRICAL ENGINEERS
 1500 MARKET STREET, PHILADELPHIA, PA. 19102

NO.	REVISIONS	NO.	DATE



NO.	DATE	BY	CHKD.	APP'D.

AS NOTED
 SECOND LEVEL PLAN M-3

