

THE SCHOOL DISTRICT OF PHILADELPHIA
Office of Capital Programs
440 North Broad Street, 3rd Floor – Suite 371
Philadelphia, PA 19130

TELEPHONE: (215) 400-4730

Addendum No. 002

Subject: 2020 Classroom Modernizations
SDP Contract Numbers: B-004 C of 19/20 & B-006 C of 19/20

Location: Samuel L. Gompers School
5701 Wynnefield Ave, Philadelphia PA 19131

This Addendum, dated February 27, 2020, shall modify and become part of the Contract Documents for the work of this project. Any items not mentioned herein, or affected by, shall be performed strictly in accordance with the original documents.

1. GENERAL

CLARIFICATION – ANY/ALL SCOPE DICTATED IN THE ASBESTOS INSPECTION REPORT SPECIFICATION AND/OR THE PAINT AND PLASTER SPECIFICATION (WHERE APPLICABLE) SHALL UTILIZE THE PROPOSED FINISHES AS INDICATED ON THE COLOR SCHEME SCHEDULE WITHIN THE CLASSROOM MODERNIZATION DRAWINGS. ALL COLOR SELECTIONS AND LOCATIONS SHALL BE APPROVED BY THE ARCHITECT.

2. TECHNICAL SPECIFICATIONS-PART B: PAINT AND PLASTER REPAIRS

DELETE THE CURRENT LEAD SAFE CERTIFICATION ASSESSMENT REPORT (SCOPE OF WORK DETAIL) AND REPLACE WITH THE REVISED REPORT ATTACHED TO THIS ADDENDUM

ADD THE ATTACHED ROOM LAYOUT DRAWINGS

3. ARCHITECTURAL DRAWINGS

DRAWING D1.1 – FIRST FLOOR DEMOLITION PLAN – UNIT A

1. REVISED demolition note 8A to read “Existing wood trim throughout entire room including, but not limited to base, door, crown molding, window trim and intermittent wood mullions, shall be stripped of any nails, staples, tape, and etc. sand and patch any penetrations and prepare to receive new finish as scheduled.”

DRAWING D1.2 – FIRST FLOOR DEMOLITION PLAN – UNIT B

1. REVISED demolition note 8A to read “Existing wood trim throughout entire room including, but not limited to base, door, crown molding, window trim and intermittent wood mullions, shall be stripped of any nails, staples, tape, and etc. sand and patch any penetrations and prepare to receive new finish as scheduled.”

DRAWING D1.3 – SECOND FLOOR DEMOLITION PLAN – UNIT B

1. REVISED demolition note 8A to read “Existing wood trim throughout entire room including, but not limited to base, door, crown molding, window trim and intermittent wood mullions, shall be stripped of any nails, staples, tape, and etc. sand and patch any penetrations and prepare to receive new finish as scheduled.”

INTERIORS DRAWINGS

DRAWING I4.1 - LARGE SCALE LAYOUTS - KINDERGARTEN

1. REVISE location of (2) cubbies within Kindergarten Cubbie Alcove 101A as indicated on the drawings.

DRAWING I4.3 - INTERIOR ELEVATIONS & DETAILS

1. CLARIFY scope of wall tile on detail H/I4.3 and J/I4.3 as indicated on the drawings.

ELECTRICAL DRAWINGS

DRAWING E2.1 - ELECTRICAL FIRST FLOOR POWER & TECHNOLOGY PLAN

1. REVISE data outlet locations and scope as indicated on the drawings.

DRAWING E2.2 - ELECTRICAL SECOND FLOOR POWER & TECHNOLOGY PLAN

1. REVISE data outlet locations and scope as indicated on the drawings.

ATTACHMENTS

DRAWINGS

DRAWING I4.1 LARGE SCALE LAYOUTS - KINDERGARTEN
DRAWING I4-3 INTERIOR ELEVATIONS & DETAILS

DRAWING E2.1 ELECTRICAL FIRST FLOOR POWER & TECHNOLOGY PLAN
DRAWING E2.2 ELECTRICAL SECOND FLOOR POWER & TECHNOLOGY PLAN

LEAD SAFE CERTIFICATION ASSESSMENT REPORT (SCOPE OF WORK DETAIL)

ROOM LAYOUT DRAWINGS

END OF ADDENDUM #002

SEAL:



J. JEFFREY STRAUB
STATE AND LICENSE NO: RA03652

ARCHITECT

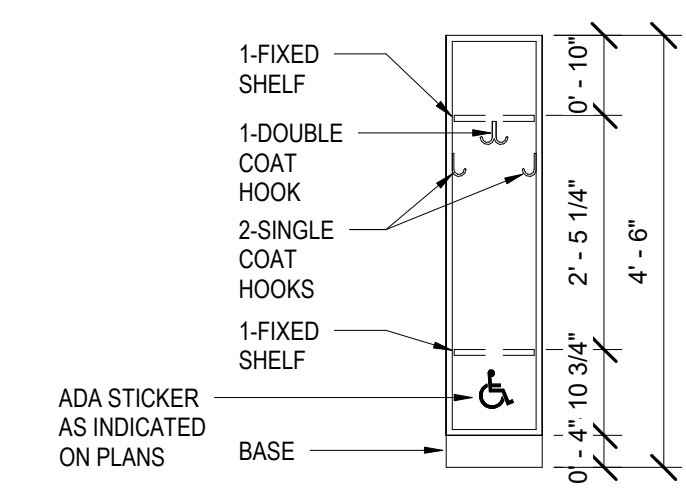
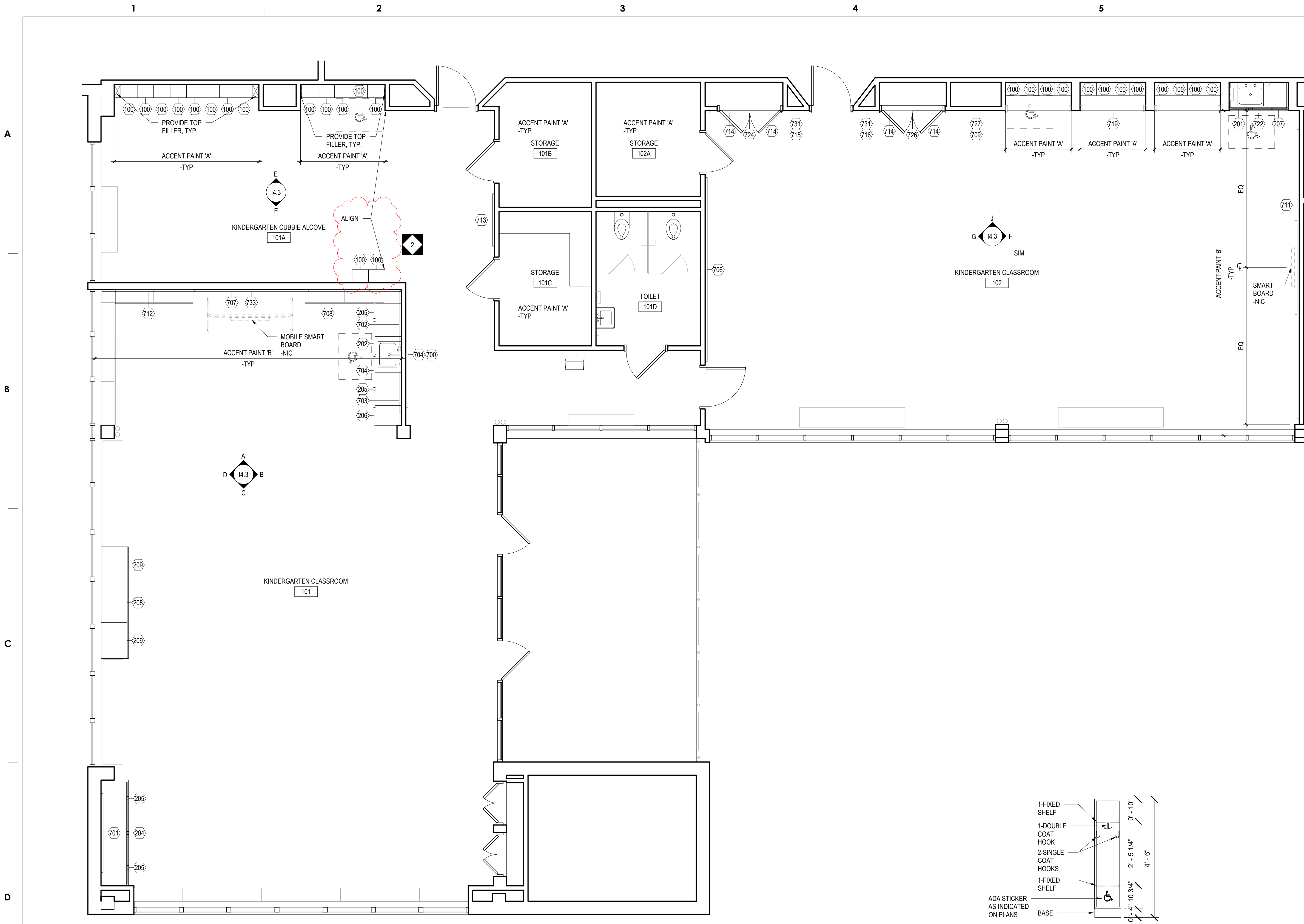
CRABTREE, ROHRBAUGH & ASSOCIATES
401 E. Winding Hill Road
Mechanicsburg, PA 17055
Phone: 717-458-0272

Email: jharder@cro-architects.com
Attn: Jessie Harder

MEP ENGINEERS

SETTY
One South Street, Suite 1130
Baltimore, MD 21202
Phone: 443-309-6036

Email: deepak@setty.com
Attn: Deepak Ajimane



1 KINDERGARTEN
1/4" = 1'-0"

2 SINGLE STUDENT LOCKER ELEVATION - TYPICAL
1/2" = 1'-0"

I4.1 - GENERAL CASEWORK AND EQUIPMENT SCHEDULE				
NO	DESCRIPTION	MANUFACTURER	MODEL	DIMENSIONS
100	OPEN STUDENT WARDROBE W/ (1) DOUBLE HOOK & (2) SINGLE HOOKS EACH. MODIFIED TO INCLUDE (2) FIXED SHELVES. SEE CUBBIE DETAIL.	SEE SPECIFICATIONS	--	15"W x 12"D x 54"H
201	2-DOOR SINK BASE CABINET	SEE SPECIFICATIONS	--	36"W x 24"D x 26"H
202	2-DOOR SINK BASE CABINET	SEE SPECIFICATIONS	--	33"W x 24"D x 26"H
204	2-DOOR BASE CABINET	SEE SPECIFICATIONS	--	33"W x 24"D x 26"H
205	2-DOOR BASE CABINET	SEE SPECIFICATIONS	--	30"W x 24"D x 26"H
206	1-DOOR BASE CABINET - RIGHT HINGED	SEE SPECIFICATIONS	--	18"W x 24"D x 26"H
207	1-DOOR BASE CABINET - RIGHT HINGED	SEE SPECIFICATIONS	--	15"W x 24"D x 26"H
208	OPEN BASE CABINET	SEE SPECIFICATIONS	--	36"W x 24"D x 26"H
209	OPEN BASE CABINET	SEE SPECIFICATIONS	--	33"W x 24"D x 26"H
700	TACK BOARD W/ALUMINUM FRAME	OWNER SUPPLIED, GC INSTALLED	SEE SPECIFICATIONS	8'-0"W x 4'-0"H
701	TACK BOARD W/ALUMINUM FRAME	OWNER SUPPLIED, GC INSTALLED	SEE SPECIFICATIONS	6'-0"W x 4'-0"H
702	TACK BOARD W/ALUMINUM FRAME	OWNER SUPPLIED, GC INSTALLED	SEE SPECIFICATIONS	4'-0"W x 4'-0"H
703	TACK BOARD W/ALUMINUM FRAME	OWNER SUPPLIED, GC INSTALLED	SEE SPECIFICATIONS	3'-0"W x 4'-0"H
704	TACK STRIP	OWNER SUPPLIED, GC INSTALLED	SEE SPECIFICATIONS	WIDTH TO FIT x 2"H
706	FRAMELESS MARKERBOARD INFILL	SEE SPECIFICATIONS	SEE SPECIFICATIONS	14'-0"W (VIF) x 4'-0"H (VIF)
707	FRAMELESS MARKERBOARD INFILL	SEE SPECIFICATIONS	SEE SPECIFICATIONS	8'-8"W (VIF) x 4'-0"H (VIF)
708	FRAMELESS MARKERBOARD INFILL	SEE SPECIFICATIONS	SEE SPECIFICATIONS	7'-0"W (VIF) x 5'-0"H (VIF)
709	FRAMELESS MARKERBOARD INFILL	SEE SPECIFICATIONS	SEE SPECIFICATIONS	4'-7"W (VIF) x 3'-6"H (VIF)
711	FRAMELESS TACK BOARD INFILL	SEE SPECIFICATIONS	SEE SPECIFICATIONS	22'-0"W (VIF) x 4'-0"H (VIF)
712	FRAMELESS TACK BOARD INFILL	SEE SPECIFICATIONS	SEE SPECIFICATIONS	7'-0"W (VIF) x 5'-0"H (VIF)
713	FRAMELESS TACK BOARD INFILL	SEE SPECIFICATIONS	SEE SPECIFICATIONS	4'-0"W (VIF) x 4'-0"H (VIF)
714	FRAMELESS TACK BOARD INFILL	SEE SPECIFICATIONS	SEE SPECIFICATIONS	2'-6"W (VIF) x 3'-6"H (VIF)
715	FRAMELESS TACK BOARD INFILL	SEE SPECIFICATIONS	SEE SPECIFICATIONS	2'-4"W (VIF) x 3'-6"H (VIF)
716	FRAMELESS TACK BOARD INFILL	SEE SPECIFICATIONS	SEE SPECIFICATIONS	2'-2"W (VIF) x 3'-6"H (VIF)
719	FRAMELESS TACK BOARD INFILL	SEE SPECIFICATIONS	SEE SPECIFICATIONS	16'-6"W (VIF) x 1'-0"H (VIF)
722	FRAMELESS TACK BOARD INFILL	SEE SPECIFICATIONS	SEE SPECIFICATIONS	6'-0"W (VIF) x 1'-0"H (VIF)
724	FRAMELESS TACK BOARD INFILL	SEE SPECIFICATIONS	SEE SPECIFICATIONS	5'-6"W (VIF) x 1'-0"H (VIF)
726	FRAMELESS TACK BOARD INFILL	SEE SPECIFICATIONS	SEE SPECIFICATIONS	5'-0"W (VIF) x 1'-0"H (VIF)
727	FRAMELESS TACK BOARD INFILL	SEE SPECIFICATIONS	SEE SPECIFICATIONS	4'-7"W (VIF) x 1'-0"H (VIF)
731	FRAMELESS TACK BOARD INFILL	SEE SPECIFICATIONS	SEE SPECIFICATIONS	2'-2"W (VIF) x 1'-0"H (VIF)
733	FRAMELESS TACK BOARD INFILL	SEE SPECIFICATIONS	SEE SPECIFICATIONS	8'-8"W (VIF) x 1'-0"H (VIF)

PRE-K & KINDERGARTEN MOUNTING HEIGHT SCHEDULE	
MARKER BOARD	2'-0" AFF TO BOTTOM EDGE
TACK BOARD	2'-0" AFF TO BOTTOM EDGE
BASE CABINETS	2'-2" AFF TO TOP OF COUNTERTOP
WALL CABINETS	SEE TYPICAL SECTION DETAIL
SMART-BOARD	CENTERED ON THE WALL

NOTE: WHERE NEW MARKER BOARD OR TACK BOARD IS BEING MOUNTED NEXT TO OR ON THE SAME WALL AS AN EXISTING TACK BOARD OR MARKER BOARD MATCH EXISTING HEIGHT.

GENERAL NOTES TO APPLY TO ALL I4 DRAWINGS

- MOUNTING HEIGHT SCHEDULE IS APPLICABLE TO MOST ROOMS. IN INSTANCE WHERE NOTE/DETAILS ON DRAWINGS DO NOT COINCIDE WITH THE SCHEDULE. THE DRAWINGS TAKE PRECEDENCE.
- ALL BASE CABINETS SHALL RECEIVE A CONTINUOUS 1-1/8" THICK SIMULATED STONE COUNTERTOP WITH A 4" BACKSPLASH UNLESS NOTED OTHERWISE. THE DEPTH OF THE COUNTERTOP SHALL EXTEND 3/4" PAST THE DEPTH OF THE BASE CABINET.
- COUNTERTOPS THAT RETURN INTO A WALL(S) SHALL RECEIVE BACKSPLASH THAT WRAPS CORNER ALONG WALL(S).
- WHERE COLUMNS, WINDOWS OR OTHER BUILDING COMPONENTS CONFLICT WITH CASEWORK DIMENSIONAL REQUIREMENTS. FIELD VERIFY DIMENSIONS AND PROVIDE CUSTOM UNIT TO ALLOW PROPER FITTING.
- ALL EXPOSED ENDS OF CASEWORK SHALL RECEIVE FINISHED END PANELS.
- COLOR FOR INTERIOR OF OPEN CABINETS SHALL MATCH EXTERIOR COLOR.
- ALL VISUAL DISPLAY AREAS (MARKER BOARDS AND/OR TACK BOARDS) 10'-0"W OR LONGER SHALL RECEIVE 2" MAP RAIL THAT SPANS FROM VERTICAL EDGE TO VERTICAL EDGE.
- PROVIDE WOOD BLOCKING IN METAL STUD WALLS, PER MANUFACTURER'S RECOMMENDATIONS. TO RECEIVE THE SMART BOARD WALL BRACKET.
- IN ROOMS RECEIVING RESILIENT BASE, ADHERE TO ALL WALLS, BASE CABINET TOE KICKS, AND EXPOSED END PANELS. REFER TO SPECIFICATIONS FOR LOCATION OF 4" AND 6" BASE.
- SEE REFLECTED CEILING PLANS FOR LOCATION OF WINDOW TREATMENTS.
- STAINLESS STEEL SINKS, FAUCETS, AND BUBBLERS SHALL BE PROVIDED AND INSTALLED BY PLUMBING CONTRACTOR.
- TELEPHONE UNITS AND SYSTEMS ARE NOT IN CONTRACT.
- COORDINATE ALL LARGE SCALE PLANS WITH MECHANICAL, ELECTRICAL AND PLUMBING DRAWINGS.
- NIC = NOT IN CONTRACT
- WHEN DESCRIPTION AND MODEL NUMBER IN CASEWORK AND EQUIPMENT SCHEDULE CONFLICT, THE DESCRIPTION TAKES PRECEDENCE.
- OPP = OPPOSITE HAND.
- COORDINATE ALL CASEWORK LAYOUTS AND VISUAL DISPLAY LAYOUTS WITH INTERIOR ELEVATIONS. IN INSTANCE WHERE FLOOR PLANE/ELEVATIONS DO NOT COINCIDE, FLOOR PLAN LAYOUT TAKES PRECEDENCE.
- VISUAL DISPLAY BOARD LAYOUT AND DIMENSIONS VARY - VERIFY IN FIELD ALL DIMENSIONS AND LAYOUTS PRIOR TO FABRICATION OR INSTALLATION.
- OWNER PROVIDED, CONTRACTOR INSTALLED VISUAL DISPLAY BOARDS SHALL ALL BE VERIFIED IN FIELD, PRIOR TO FABRICATION & INSTALLATION.

100% DESIGN SUBMISSION
1/22/2020

NO.	DATE	REVISION
10		
9		
8		
7		
6		
5		
4		
3		
2		

NO.	DATE	ADDENDUM #	REVISION
1	2/27/2020	ADDENDUM # 2	

SCHOOL & LOCATION
**SAMUEL GOMPERS
ELEMENTARY SCHOOL**

MAILING ADDRESS: 5701
WYNNFIELD AVE, PHILADELPHIA,
PA 19131
DEED ADDRESS: 2400 N 57TH ST,
PHILADELPHIA, PA 19131-1300

PROJECT TITLE
**CLASSROOM
MODERNIZATION**

DRAWING TITLE
**LARGE SCALE LAYOUTS -
KINDERGARTEN**

LOCATION NO.	FILE NO.

DRAWN BY	CHECKED BY

DRAWING NO.
14.1



ARCHITECT

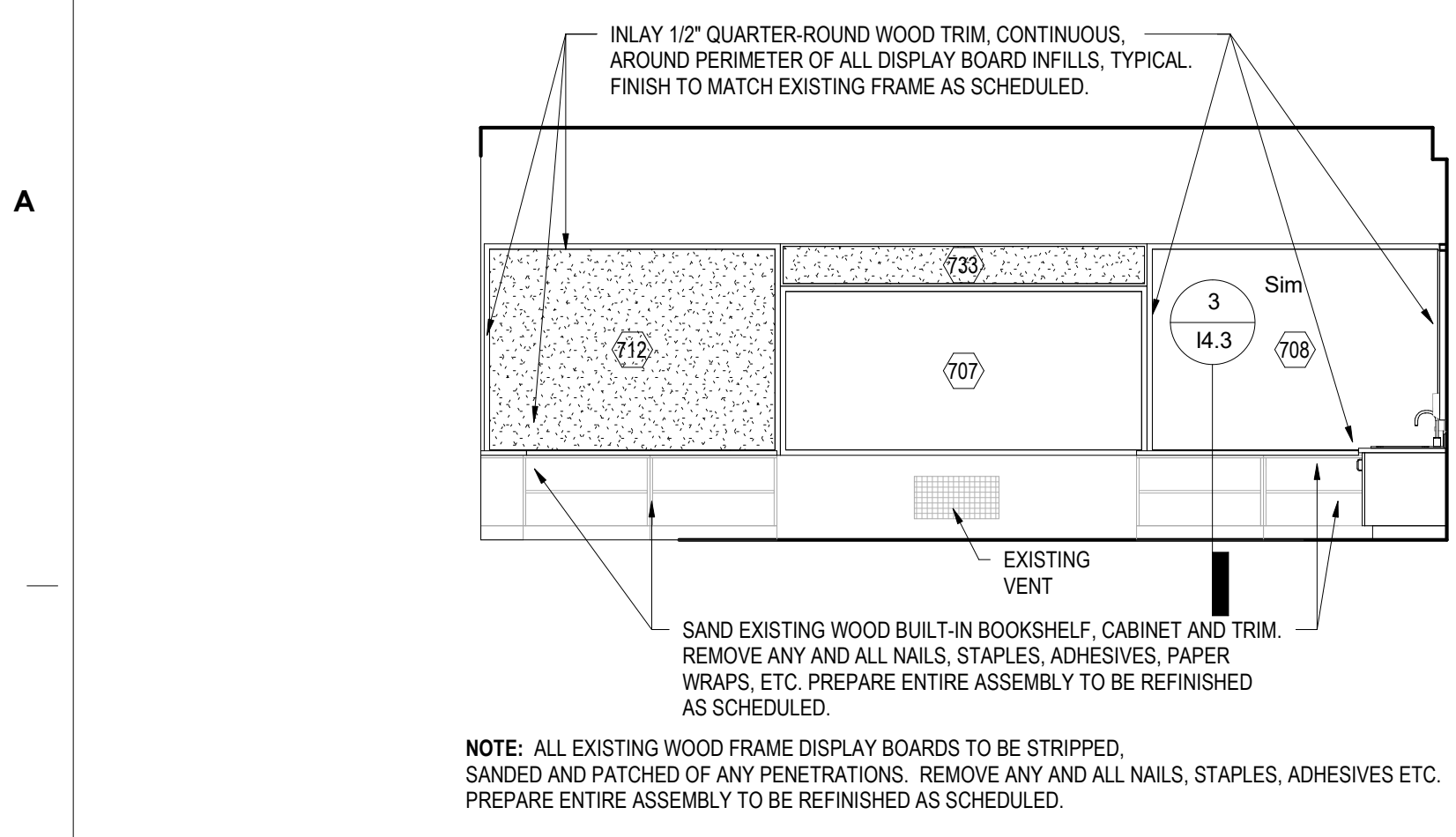
CRABTREE, ROHRBAUGH & ASSOCIATES
401 E. Winding Hill Road
Mechanicsburg, PA 17055
Phone: 717-458-0272

Email: jraeder@cro-architects.com
Attn: Jessie Harder

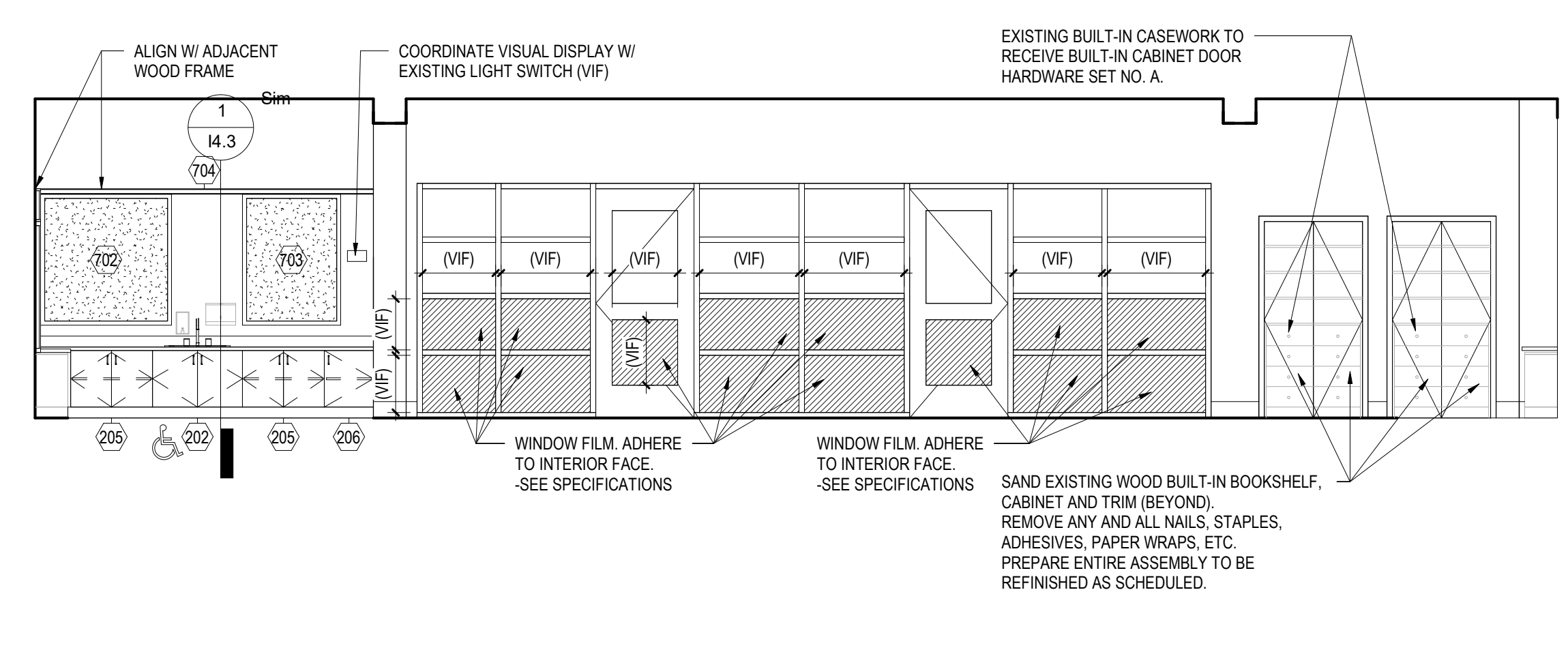
MEP ENGINEERS

SEITY
One South Street, Suite 1130
Baltimore, MD 21202
Phone: 443-309-6036

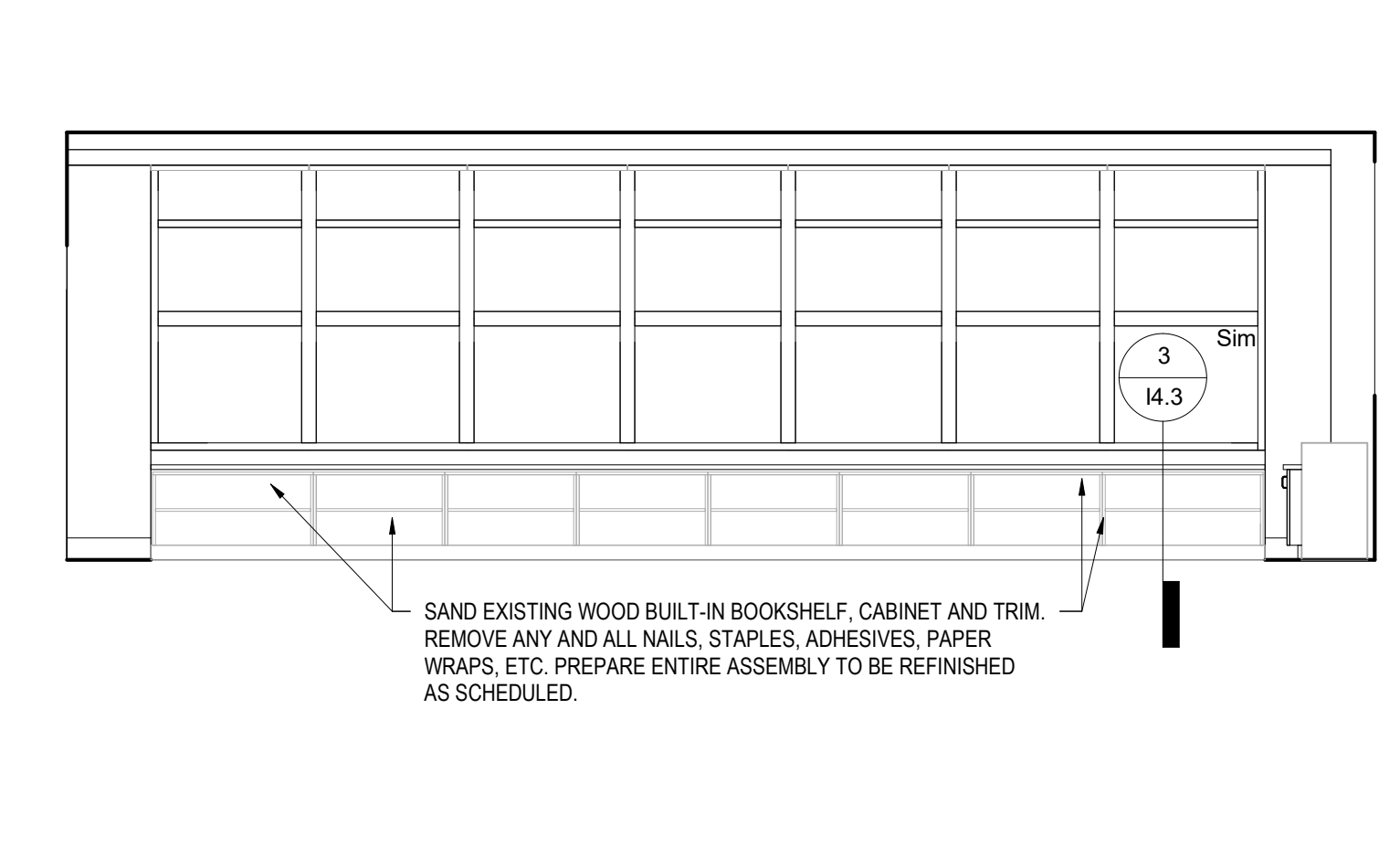
Email: deepak@seity.com
Attn: Deepak Ajimane



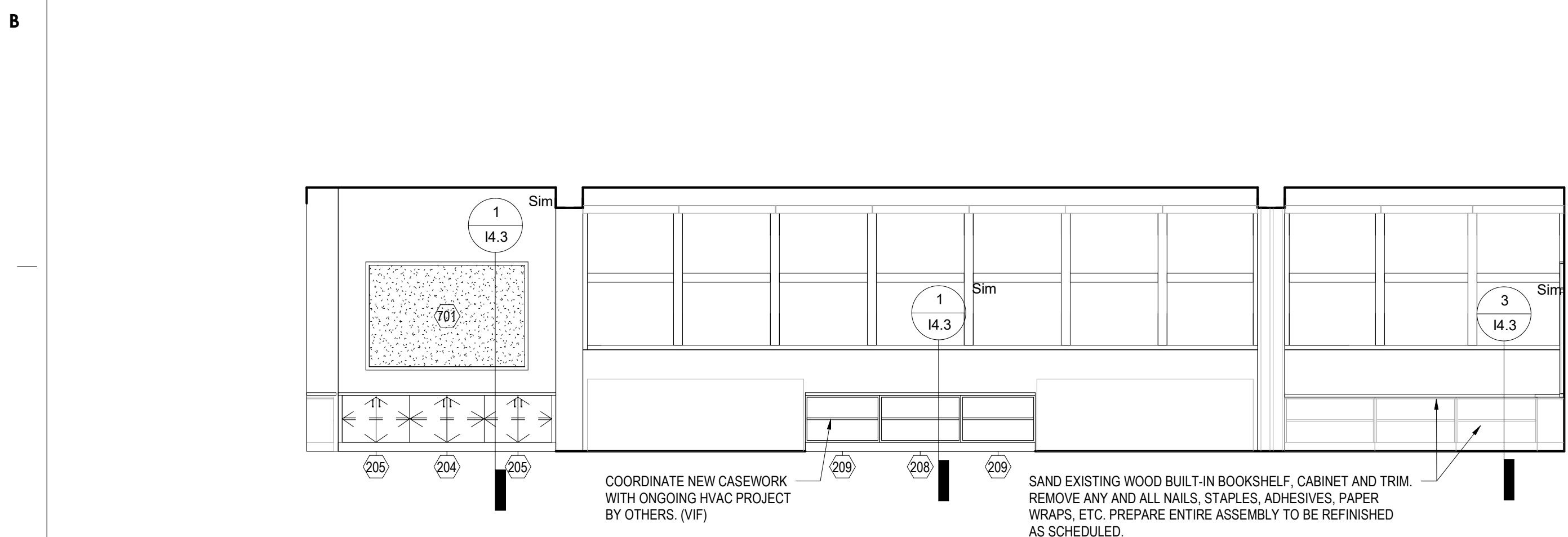
A KINDERGARTEN PRIMARY TEACHING WALL - ROOM 101
1/4" = 1'-0"



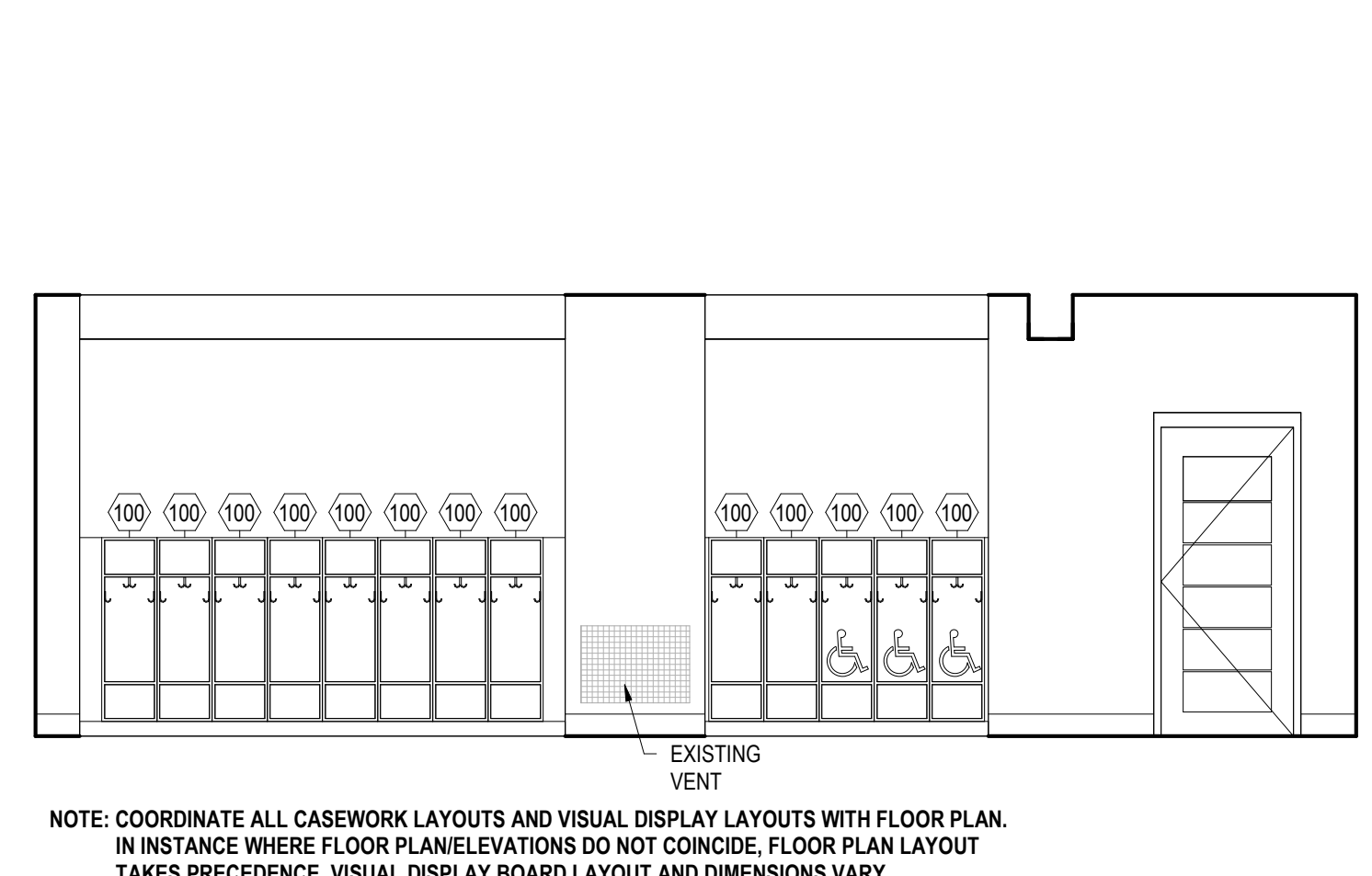
B NEW KINDERGARTEN CASEWORK - ROOM 101
1/4" = 1'-0"



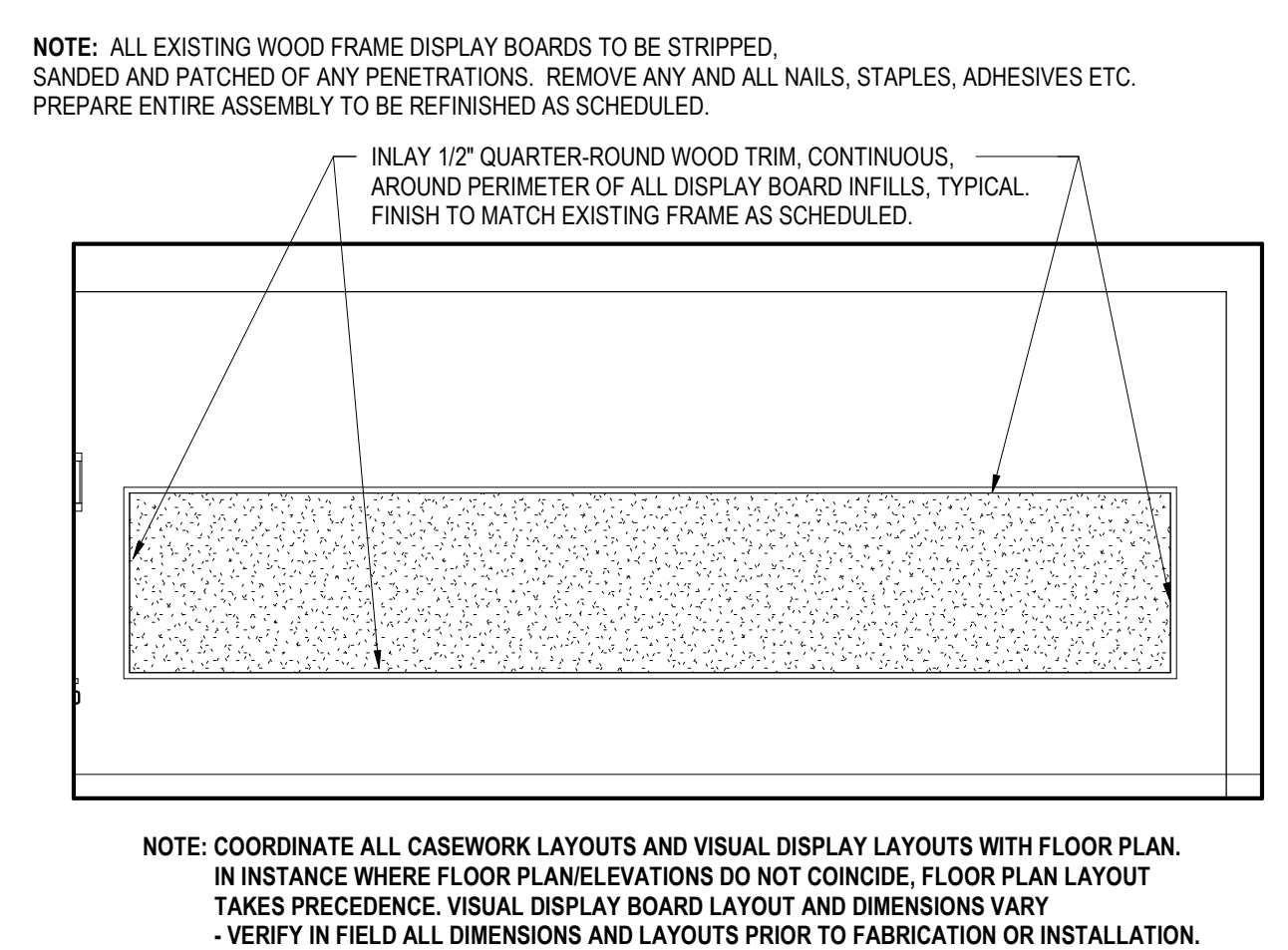
C EXISTING KINDERGARTEN CASEWORK - ROOM 101
1/4" = 1'-0"



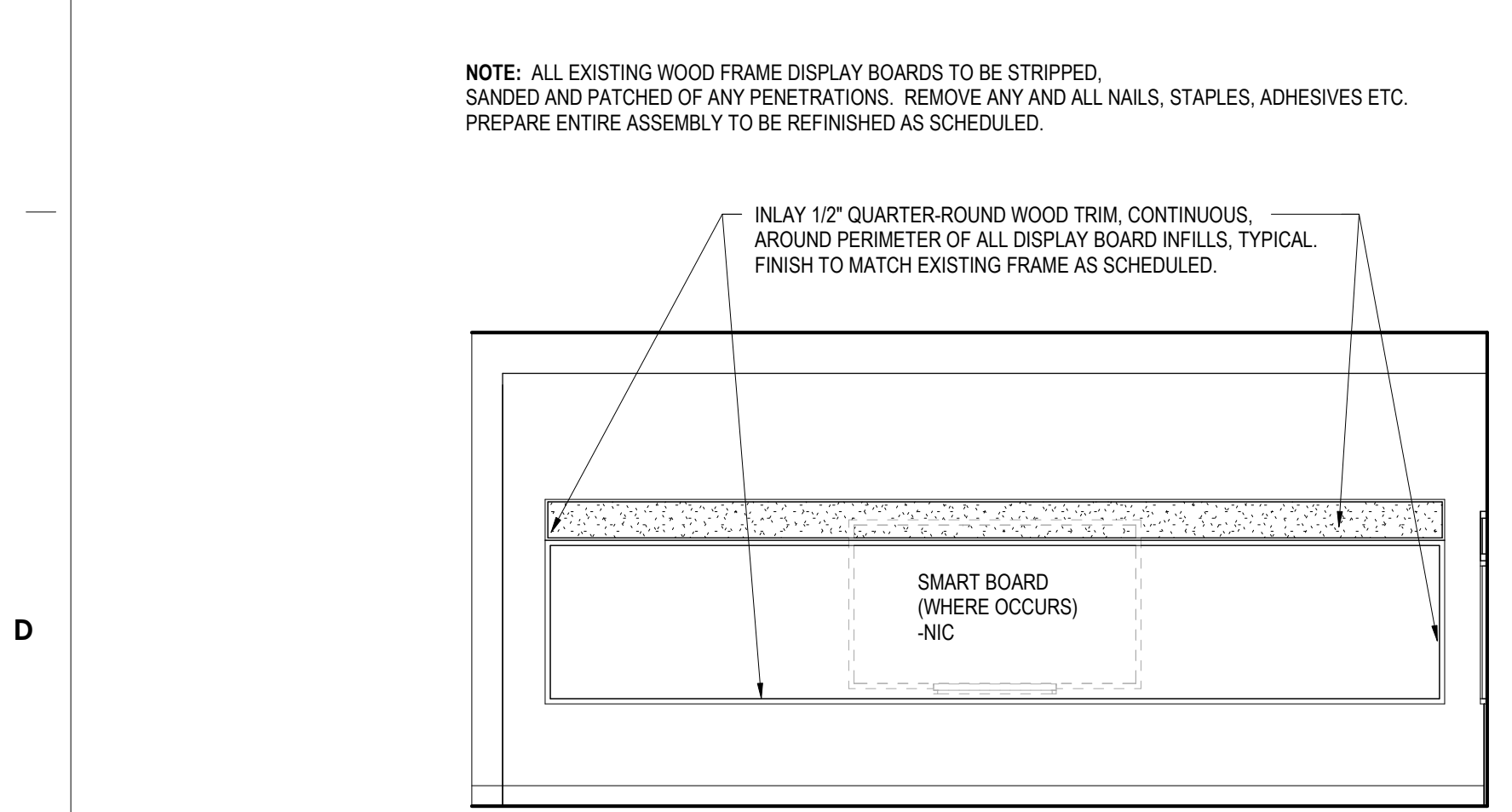
D EXISTING KINDERGARTEN CASEWORK - ROOM 101
1/4" = 1'-0"



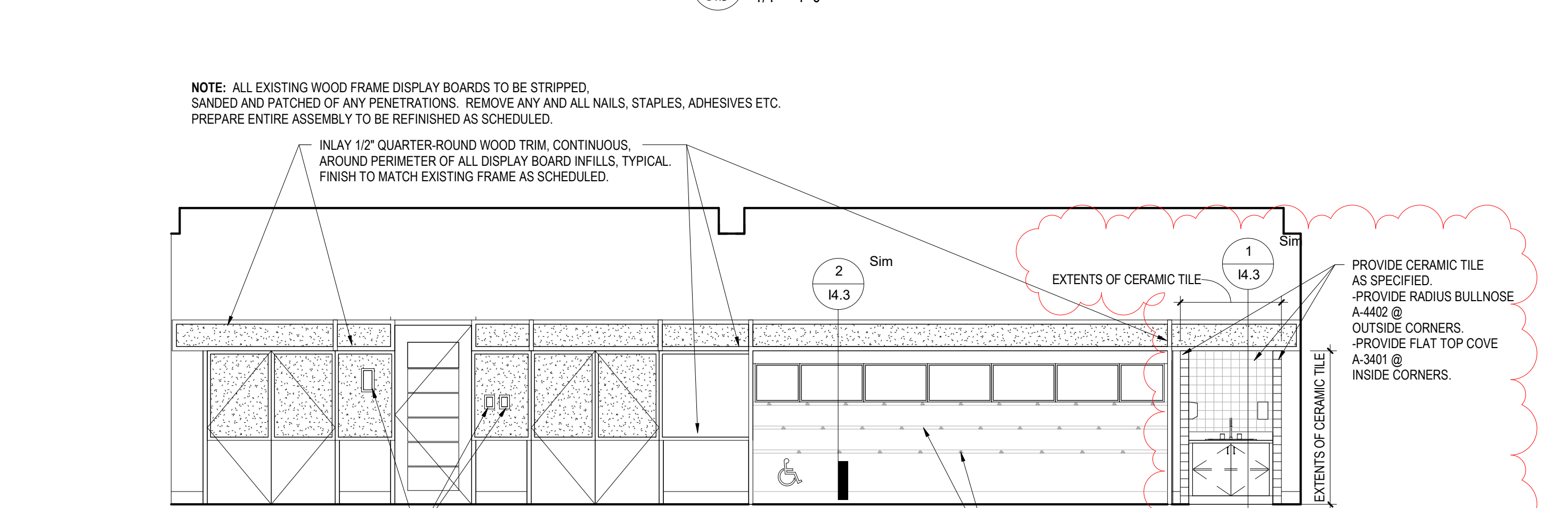
E STORAGE CLOSET CUBBIE LAYOUT - ROOM 101
1/4" = 1'-0"



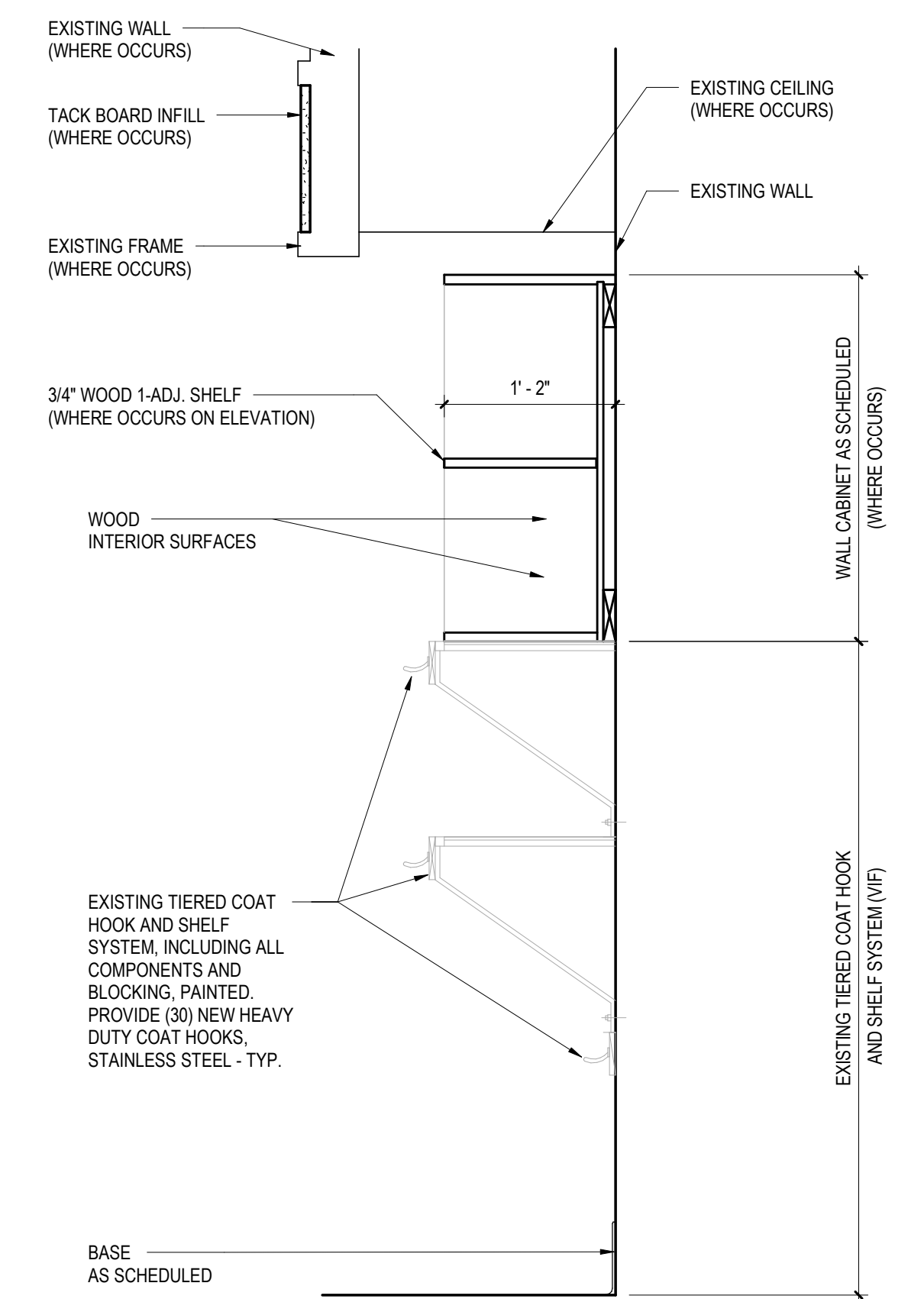
F PRIMARY TEACHING WALL - TYPICAL
1/4" = 1'-0"



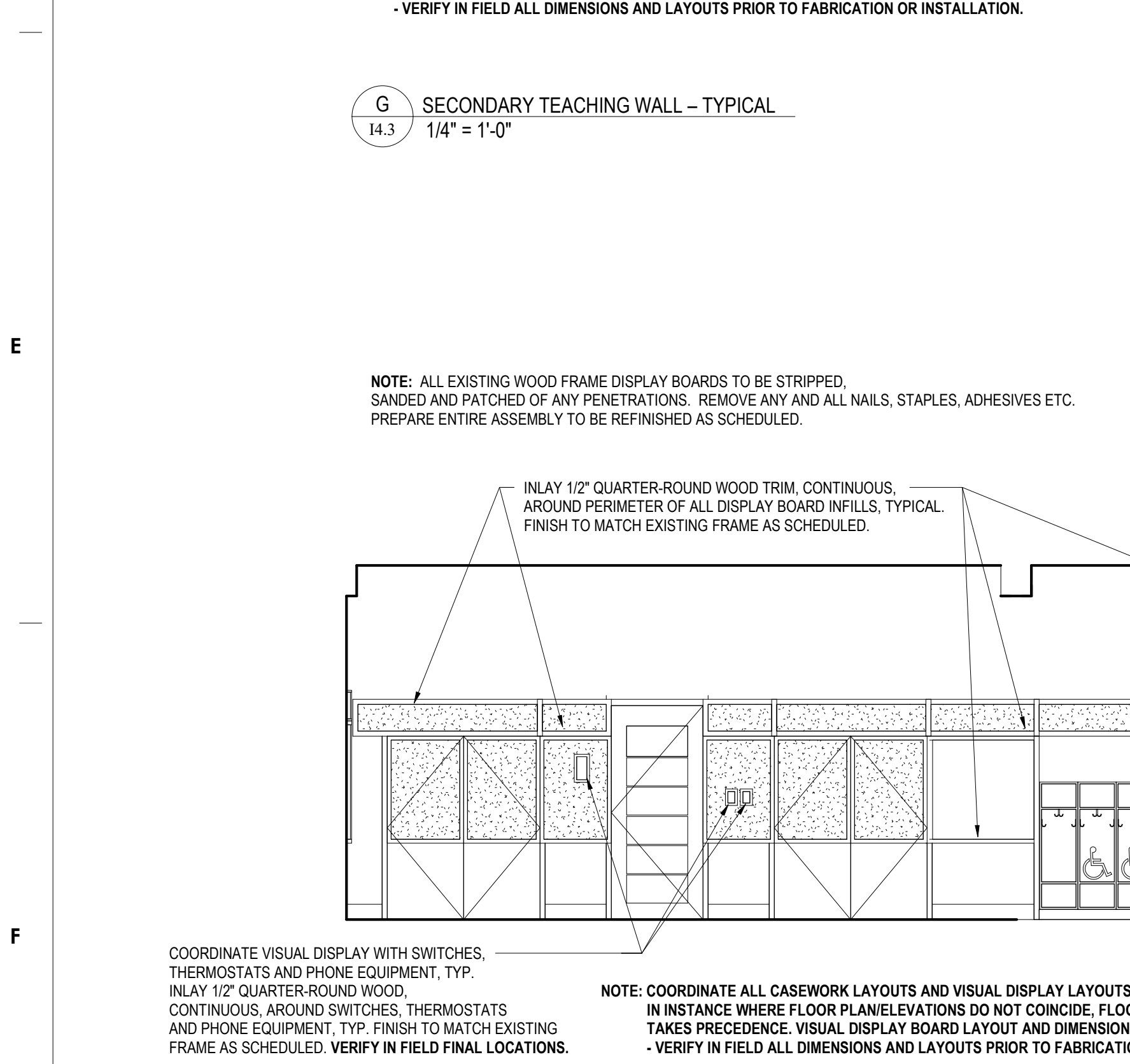
G SECONDARY TEACHING WALL - TYPICAL
1/4" = 1'-0"



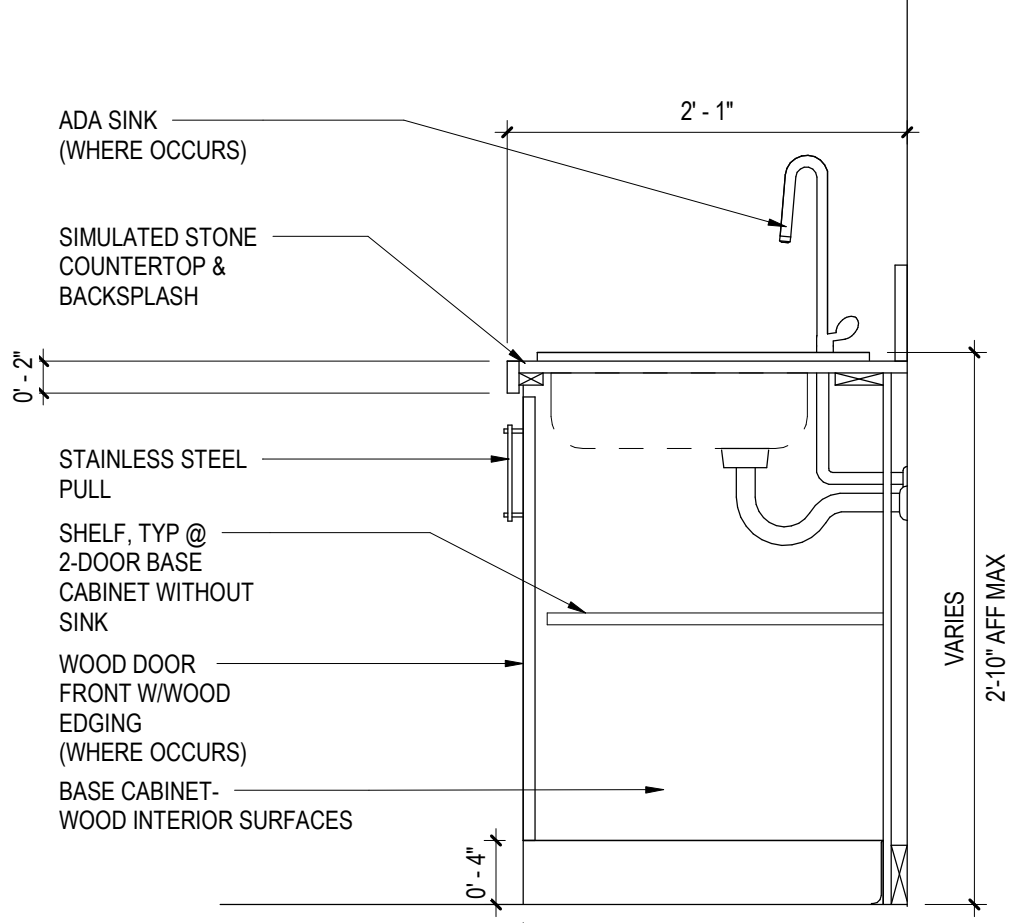
H ALCOVE EXISTING COAT HOOKS AND NEW WALL CABINETS - TYPICAL
1/4" = 1'-0"



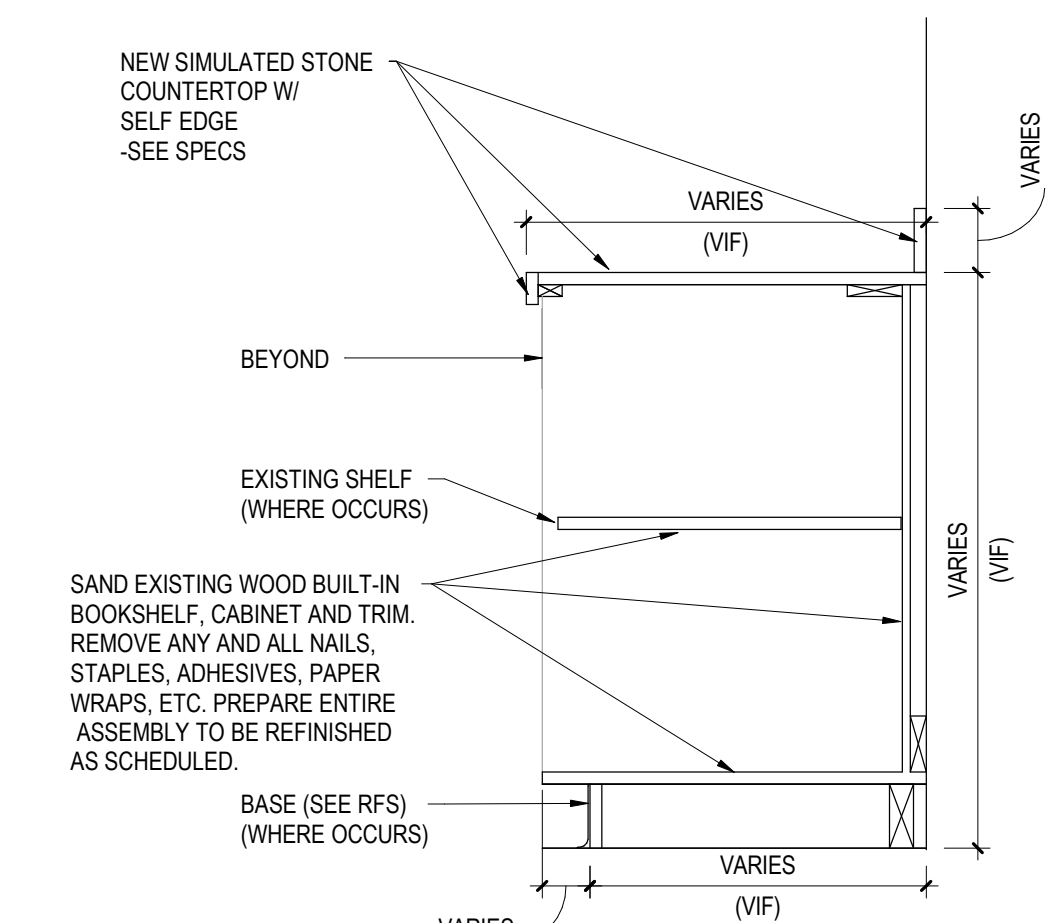
I WOOD WALL CABINET & EXISTING 3-TIER SHELF DETAIL
1" = 1'-0"



J ALCOVE CUBBIE LAYOUT - KINDERGARTEN - TYPICAL
1/4" = 1'-0"



K NEW WOOD ADA SINK & BASE CABINET DETAIL
1" = 1'-0"



L EXISTING WOOD OPEN BASE CABINET DETAIL
1" = 1'-0"

PRE-K & KINDERGARTEN MOUNTING HEIGHT SCHEDULE	
MARKER BOARD	2'-0" AFF TO BOTTOM EDGE
TACK BOARD	2'-0" AFF TO BOTTOM EDGE
BASE CABINETS	2'-2" AFF TO TOP OF COUNTERTOP
WALL CABINETS	SEE TYPICAL SECTION DETAIL
SMART-BOARD	CENTERED ON THE WALL

NOTE: WHERE NEW MARKER BOARD OR TACK BOARD IS BEING MOUNTED NEXT TO OR ON THE SAME WALL AS AN EXISTING TACK BOARD OR MARKER BOARD MATCH EXISTING HEIGHT.

GRADE 1-3 MOUNTING HEIGHT SCHEDULE	
MARKER BOARD	2'-6" AFF TO BOTTOM EDGE
TACK BOARD	2'-6" AFF TO BOTTOM EDGE
BASE CABINETS	2'-6" AFF TO TOP OF COUNTERTOP
WALL CABINETS	SEE TYPICAL SECTION DETAIL
SMART-BOARD	CENTERED ON THE WALL

NOTE: WHERE NEW MARKER BOARD OR TACK BOARD IS BEING MOUNTED NEXT TO OR ON THE SAME WALL AS AN EXISTING TACK BOARD OR MARKER BOARD MATCH EXISTING HEIGHT.

100% DESIGN SUBMISSION
1/22/2020

NO.	DATE	REVISION
1	2/27/2020	ADDENDUM # 2

SCHOOL & LOCATION
SAMUEL GOMPERS ELEMENTARY SCHOOL

MAILING ADDRESS: 5701 WYNNFIELD AVE, PHILADELPHIA, PA 19131
DEED ADDRESS: 2400 N 57TH ST, PHILADELPHIA, PA 19131-1300

PROJECT TITLE
CLASSROOM MODERNIZATION

DRAWING TITLE
INTERIOR ELEVATIONS & DETAILS

LOCATION NO.	FILE NO.
DRAWN BY	CHECKED BY

DRAWING NO.
14.3

SEAL:



R. JEFFREY STRAUB
STATE AND LICENSE NO. RA033652

ARCHITECT

CRABTREE, ROHRBAUGH & ASSOCIATES
401 E. Winding Hill Road
Mechanicsburg, PA 17055
Phone: 717-458-0272
Email: jharder@cra-architects.com
Attn: Jessie Harder

M/E/P ENGINEERS

SETTY
575 South Charles Street, Suite 403
Baltimore, MD 21201
Phone: 667-309-6036
Email: deepak.ah@setty.com
Attn: Deepak Ajmane

100% DESIGN SUBMISSION
1/22/2020

10		
9		
8		
7		
6		
5		
4		
3		
2	02/27/2020	ADDENDUM #2
1	02/20/2020	ADDENDUM #1
NO.	DATE	REVISION

SCHOOL & LOCATION
**SAMUEL GOMPERS
ELEMENTARY SCHOOL**

5701 WYNNFIELD AVE.
PHILADELPHIA, PA 19131

PROJECT TITLE
**CLASSROOM
MODERNIZATION**

DRAWING TITLE

**ELECTRICAL FIRST FLOOR
POWER & TECHNOLOGY
PLAN**

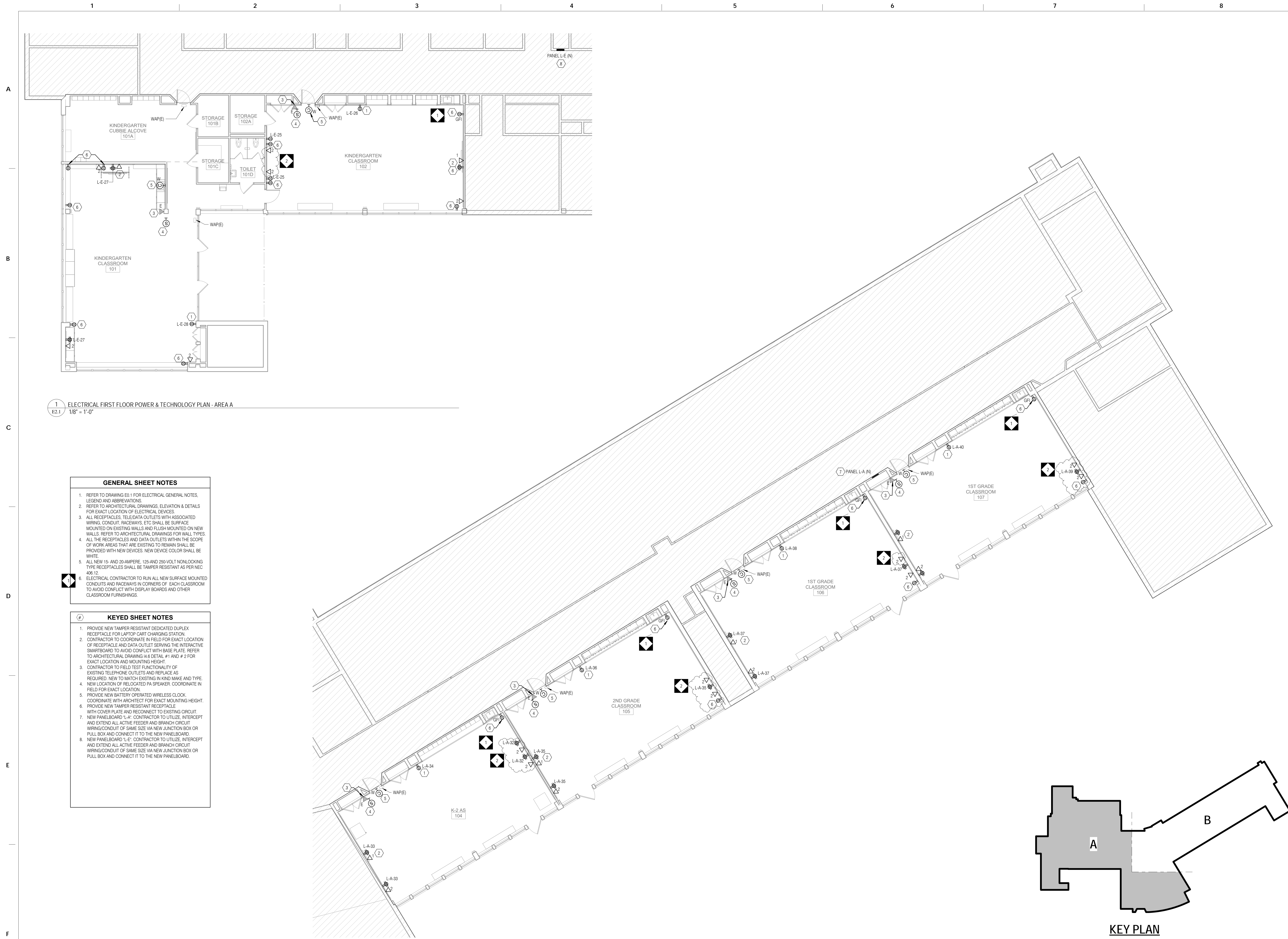
LOCATION NO.	FILE NO.
--------------	----------

DRAWN BY	CHECKED BY
NBS	DAT

	OF	2019 / 20
B-004C	OF	2019 / 20
B-006C	OF	2019 / 20

DRAWING NO.

E2.1



1
E2.1
ELECTRICAL FIRST FLOOR POWER & TECHNOLOGY PLAN - AREA A
1/8" = 1'-0"

2
E2.1
ELECTRICAL FIRST FLOOR POWER & TECHNOLOGY PLAN - AREA B
1/8" = 1'-0"

- GENERAL SHEET NOTES**
- REFER TO DRAWING E0-1 FOR ELECTRICAL GENERAL NOTES, LEGEND AND ABBREVIATIONS.
 - REFER TO ARCHITECTURAL DRAWINGS, ELEVATION & DETAILS FOR EXACT LOCATION OF ELECTRICAL DEVICES.
 - ALL RECEPTACLES, TELEPHONE OUTLETS WITH ASSOCIATED WIRING, CONDUIT, RACEWAYS, ETC SHALL BE SURFACE MOUNTED ON EXISTING WALLS AND FLUSH MOUNTED ON NEW WALLS. REFER TO ARCHITECTURAL DRAWINGS FOR WALL TYPES.
 - ALL THE RECEPTACLES AND DATA OUTLETS WITHIN THE SCOPE OF WORK AREAS THAT ARE EXISTING TO REMAIN SHALL BE PROVIDED WITH NEW DEVICES. NEW DEVICE COLOR SHALL BE WHITE.
 - ALL NEW 15- AND 20-AMPERE, 125- AND 250-VOLT NONLOCKING TYPE RECEPTACLES SHALL BE TAMPER RESISTANT AS PER NEC 406.12.
 - ELECTRICAL CONTRACTOR TO RUN ALL NEW SURFACE MOUNTED CONDUITS AND RACEWAYS IN CORNERS OF EACH CLASSROOM TO AVOID CONFLICT WITH DISPLAY BOARDS AND OTHER CLASSROOM FURNISHINGS.

- KEYED SHEET NOTES**
- PROVIDE NEW TAMPER RESISTANT DEDICATED DUPLEX RECEPTACLE FOR LAPTOP CART CHARGING STATION.
 - CONTRACTOR TO COORDINATE IN FIELD FOR EXACT LOCATION OF RECEPTACLE AND DATA OUTLET SERVING THE INTERACTIVE SMARTBOARD TO AVOID CONFLICT WITH BASE PLATE. REFER TO ARCHITECTURAL DRAWING 4.6 DETAIL #1 AND #2 FOR EXACT LOCATION AND MOUNTING HEIGHT.
 - CONTRACTOR TO FIELD TEST FUNCTIONALITY OF EXISTING TELEPHONE OUTLETS AND REPLACE AS REQUIRED. NEW TO MATCH EXISTING IN KIND MAKE AND TYPE.
 - NEW LOCATION OF RELOCATED PA SPEAKER. COORDINATE IN FIELD FOR EXACT LOCATION.
 - PROVIDE NEW BATTERY OPERATED WIRELESS CLOCK. COORDINATE WITH ARCHITECT FOR EXACT MOUNTING HEIGHT.
 - PROVIDE NEW TAMPER RESISTANT RECEPTACLE WITH COVER PLATE AND RECONNECT TO EXISTING CIRCUIT.
 - NEW PANELBOARD 'L-A': CONTRACTOR TO UTILIZE, INTERCEPT AND EXTEND ALL ACTIVE FEEDER AND BRANCH CIRCUIT WIRING/CONDUIT OF SAME SIZE VIA NEW JUNCTION BOX OR PULL BOX AND CONNECT IT TO THE NEW PANELBOARD.
 - NEW PANELBOARD 'L-E': CONTRACTOR TO UTILIZE, INTERCEPT AND EXTEND ALL ACTIVE FEEDER AND BRANCH CIRCUIT WIRING/CONDUIT OF SAME SIZE VIA NEW JUNCTION BOX OR PULL BOX AND CONNECT IT TO THE NEW PANELBOARD.

SEAL:



R. JEFFREY STRAUB
STATE AND LICENSE NO. RA033652

ARCHITECT

CRABTREE, ROHRBAUGH & ASSOCIATES
401 E. Winding Hill Road
Mechanicsburg, PA 17055
Phone: 717-458-0272

Email: jharder@cra-architects.com
Attn: Jessie Harder

M/E/P ENGINEERS

SETTY
575 South Charles Street, Suite 403
Baltimore, MD 21201
Phone: 667-309-6036

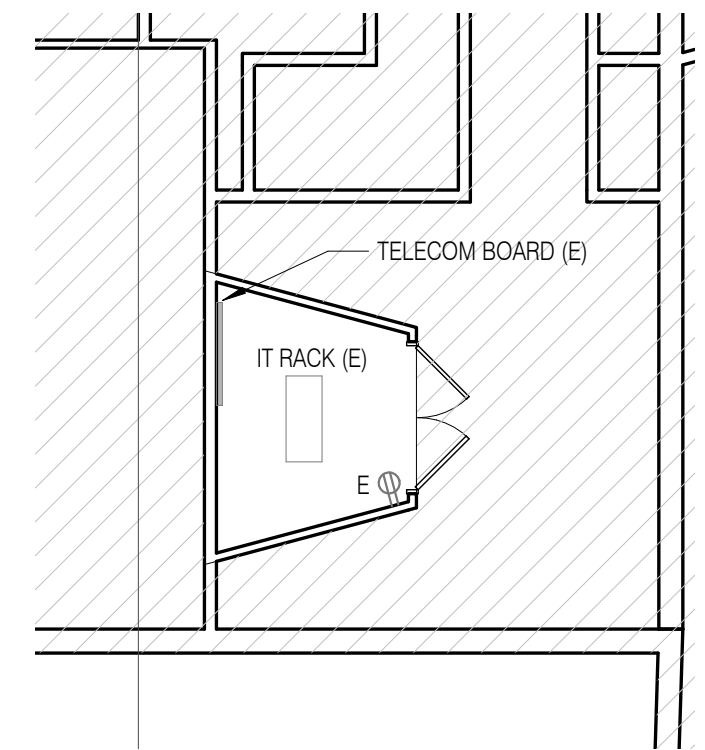
Email: deepak.ah@setty.com
Attn: Deepak Ajmane

GENERAL SHEET NOTES

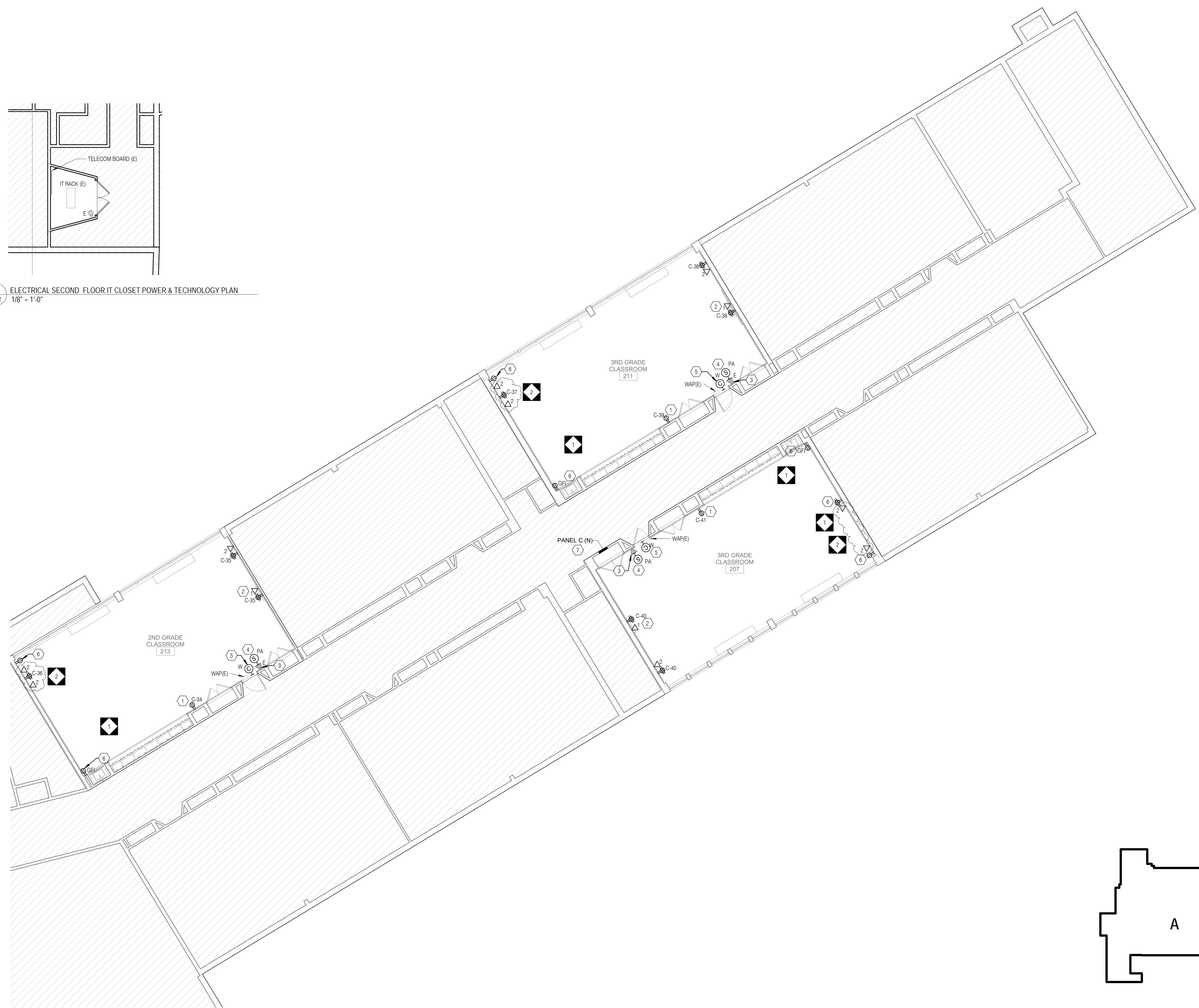
- REFER TO DRAWING E0.1 FOR ELECTRICAL GENERAL NOTES, LEGEND AND ABBREVIATIONS.
- REFER TO ARCHITECTURAL DRAWINGS, ELEVATION & DETAILS FOR EXACT LOCATION OF ELECTRICAL DEVICES.
- ALL RECEPTACLES, TELEPHONE OUTLETS WITH ASSOCIATED WIRING, CONDUIT, RACEWAYS, ETC SHALL BE SURFACE MOUNTED ON EXISTING WALLS AND FLUSH MOUNTED ON NEW WALLS. REFER TO ARCHITECTURAL DRAWINGS FOR WALL TYPES.
- ALL THE RECEPTACLES AND DATA OUTLETS WITHIN THE SCOPE OF WORK AREAS THAT ARE EXISTING TO REMAIN SHALL BE PROVIDED WITH NEW DEVICES. NEW DEVICE COLOR SHALL BE WHITE.
- ALL NEW 15- AND 20-AMPERE, 125- AND 250-VOLT NON-LOCKING TYPE RECEPTACLES SHALL BE TAMPER RESISTANT AS PER NEC 406.12.
- ELECTRICAL CONTRACTOR TO RUN ALL NEW SURFACE MOUNTED CONDUITS AND RACEWAYS IN CORNERS OF EACH CLASSROOM TO AVOID CONFLICT WITH DISPLAY BOARDS AND OTHER CLASSROOM FURNISHINGS.

KEYED SHEET NOTES

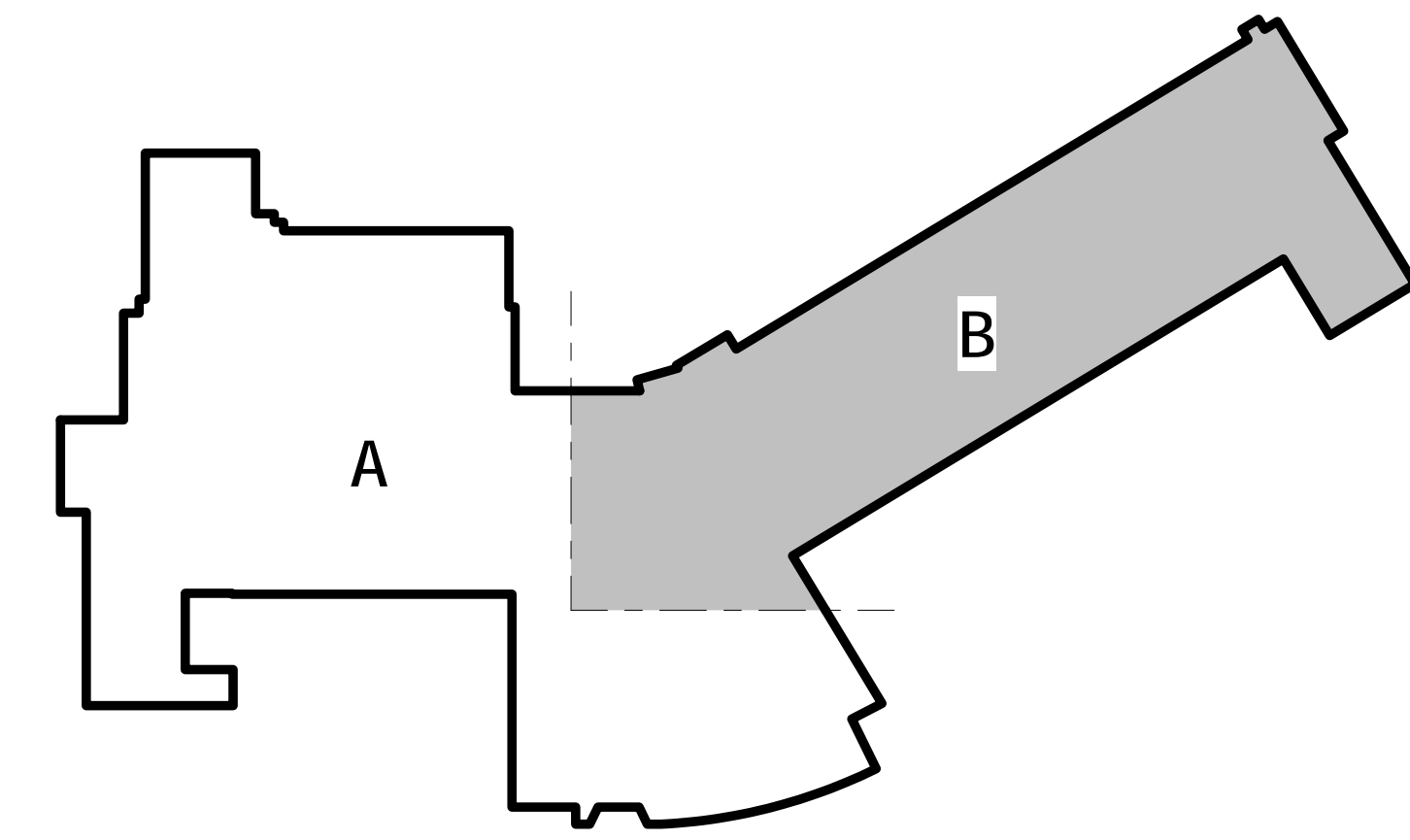
- PROVIDE NEW TAMPER RESISTANT DEDICATED DUPLEX RECEPTACLE FOR LAPTOP CART CHARGING STATION.
- CONTRACTOR TO COORDINATE IN FIELD FOR EXACT LOCATION OF RECEPTACLE AND DATA OUTLET SERVING THE INTERACTIVE SMARTBOARD TO AVOID CONFLICT WITH BASE PLATE. REFER TO ARCHITECTURAL DRAWING I&B DETAIL #1 AND #2 FOR EXACT LOCATION AND MOUNTING HEIGHT.
- CONTRACTOR TO FIELD TEST FUNCTIONALITY OF EXISTING TELEPHONE OUTLETS AND REPLACE AS REQUIRED. NEW TO MATCH EXISTING IN KIND MAKE AND TYPE.
- NEW LOCATION OF RELOCATED PA SPEAKER. COORDINATE IN FIELD FOR EXACT LOCATION.
- PROVIDE NEW BATTERY OPERATED WIRELESS CLOCK. COORDINATE WITH ARCHITECT FOR EXACT MOUNTING HEIGHT.
- PROVIDE NEW TAMPER RESISTANT RECEPTACLE WITH COVER PLATE AND RECONNECT TO EXISTING CIRCUIT.
- NEW PANELBOARD 'C'; CONTRACTOR TO UTILIZE, INTERCEPT AND EXTEND ALL ACTIVE FEEDER AND BRANCH CIRCUIT WIRING/CONDUIT OF SAME SIZE VIA NEW JUNCTION BOX OR PULL BOX AND CONNECT IT TO THE NEW PANELBOARD.



2 ELECTRICAL SECOND FLOOR IT CLOSET POWER & TECHNOLOGY PLAN
1/8" = 1'-0"



1 ELECTRICAL SECOND FLOOR POWER & TECHNOLOGY PLAN
1/8" = 1'-0"



KEY PLAN

100% DESIGN SUBMISSION
1/22/2020

10		
9		
8		
7		
6		
5		
4		
3		
2	02/23/2020	ADDENDUM #2
1	02/20/2020	ADDENDUM #1
NO.	DATE	REVISION

SCHOOL & LOCATION
**SAMUEL GOMPERS
ELEMENTARY SCHOOL**

5701 WYNNEFIELD AVE.
PHILADELPHIA, PA 19131

PROJECT TITLE
**CLASSROOM
MODERNIZATION**

DRAWING TITLE

**ELECTRICAL SECOND
FLOOR POWER &
TECHNOLOGY PLAN**

LOCATION NO.	FILE NO.
DRAWN BY	CHECKED BY
NBS	DAT
B-004C	OF 2019 / 20
B-006C	OF 2019 / 20

DRAWING NO.

E2.2

Lead Safe Certification for Samuel Gompers

Name of Inspector: Charles Rhodes

Inspection Dates: through

Inspection Company: Batta Environmental

ULCS# 4280

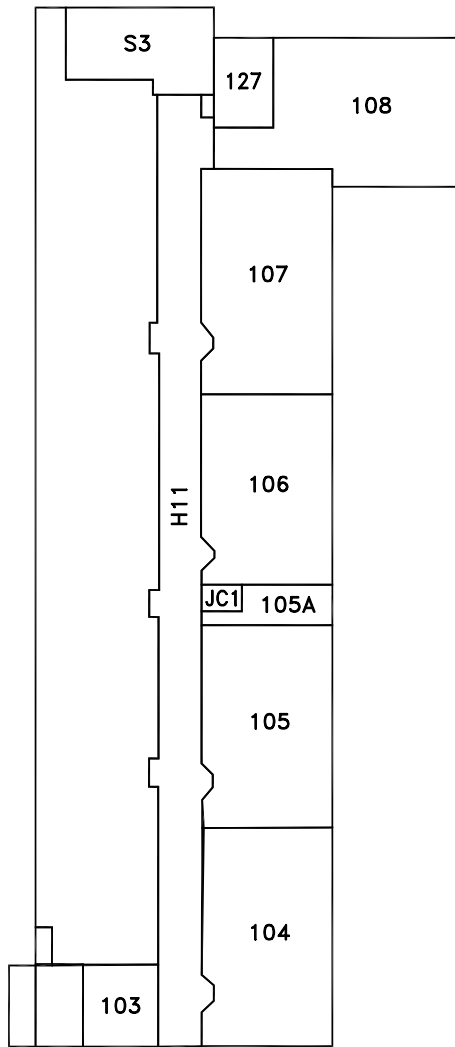
On-Site Room Name	Component (see	Substrate Material	Color	Primary Damage	Damage Quantity (sf)	(mg/cm2)	Component XRF	terms)	Quantity (sf)	Moved	Moisture
S3 : Stairwell 3 next to Library	W3	Metal	Blue	Flaking	Metal	0.4	Negative	Door			
S3 : Stairwell 3 next to Library	W3	Metal	Blue	Flaking	Metal	0.2	Negative	Door Frame			
S3 : Stairwell 3 next to Library	W3	Metal	Blue	Flaking	Metal	0.1	Negative	Exit Door			
S3 : Stairwell 3 next to Library	W3	Metal	Blue	Flaking	Metal	0.3	Negative	Exit Door Frame			
S3 : Stairwell 3 next to Library	W3	Metal	Blue	Chipping	Metal	0.1	Negative	Hall @ Stair			
S3 : Stairwell 3 next to Library	W1	Metal	Brown	Chipping	Metal	0.2	Negative	Post			
S3 : Stairwell 3 next to Library	W2	Concrete	Tan	Efflorescence	Concrete	-0.3	Negative				
S3 : Stairwell 3 next to Library	W3	Metal	Brown	Chipping	Metal	0.1	Negative	Railing			
S3 : Stairwell 3 next to Library	W1	Metal	Blue	Chipping	Metal	0.4	Negative	Door @209			
108 : Library	W1	Drywall	Light Gray	Intact	Drywall	0.1	Negative				
108 : Library	W2	Drywall	Light Gray	Intact	Drywall	0.3	Negative				
108 : Library	W3	Drywall	Light Gray	Intact	Drywall	0.1	Negative				
108 : Library	W4	Drywall	Light Gray	Intact	Drywall	0.2	Negative				
108 : Library	W4	Wood	White	Intact	Wood	0.2	Negative	Wall Trim			
108 : Library	Ceiling	Concrete	White	Intact	Concrete	0.4	Negative				
108 : Library	W1	Wood	White	Peeling	Wood	0.1	Negative	Door			
127 : Library Office	N/A	N/A	N/A	N/A	N/A	N/A	N/A	N/A			
127 : Library Office	N/A	N/A	N/A	N/A	N/A	N/A	N/A	N/A			
127 : Library Office	N/A	N/A	N/A	N/A	N/A	N/A	N/A	N/A			
127 : Library Office	N/A	N/A	N/A	N/A	N/A	N/A	N/A	N/A			
127 : Library Office	N/A	N/A	N/A	N/A	N/A	N/A	N/A	N/A			
127 : Library Office	N/A	N/A	N/A	N/A	N/A	N/A	N/A	N/A			
107 : Classroom 107	W1	Concrete	Light Blue	Chipping	Concrete	-0.2	Negative				
107 : Classroom 107	W2	Concrete	Light Blue	Chipping	Concrete	-0.3	Negative				
107 : Classroom 107	W3	Concrete	Light Blue	Chipping	Concrete	-0.3	Negative				
107 : Classroom 107	W4	Concrete	Light Blue	Chipping	Concrete	-0.3	Negative				
107 : Classroom 107	Ceiling	Concrete	White	Chipping	Concrete	0.1	Negative				
107 : Classroom 107	W4	Wood	Light Blue	Chipping	Wood	0.2	Negative	Chalkboard Frame			
107 : Classroom 107	W1	Metal	Blue	Flaking	Metal	0.2	Negative	Door Frame			
107 : Classroom 107	W1	Wood	Light Blue	Flaking	Wood	0	Negative	Closet Frame			
107 : Classroom 107	W1	Wood	Light Blue	Flaking	Wood	0.2	Negative	Coat Rack			
107 : Classroom 107	W3	Metal	Light Blue	Chipping	Metal	0.2	Negative	Radiator			
107 : Classroom 107	W3	Metal	Blue	Chipping	Metal	0.1	Negative	Exit Door			
107 : Classroom 107	W1	Wood	Blue	Chipping	Wood	0.1	Negative	Wood			
Hall at Room 107	W4	Wood	Blue	Chipping	Wood	0.1	Negative	Bulletin Board Frame			
106 : Classroom 106	W1	Concrete	Light Blue	Chipping	Concrete	-0.1	Negative				
106 : Classroom 106	W2	Concrete	Light Blue	Chipping	Concrete	0.1	Negative				
106 : Classroom 106	W3	Concrete	Light Blue	Chipping	Concrete	-0.1	Negative				
106 : Classroom 106	W4	Concrete	Light Blue	Chipping	Concrete	-0.4	Negative				
107 : Classroom 106	Ceiling	Concrete	Tan	Chipping	Concrete	0.3	Negative				
106 : Classroom 106	W1	Wood	Light Blue	Chipping	Wood	0.2	Negative	Door Trim			
106 : Classroom 106	W1	Metal	Blue	Chipping	Metal	-0.3	Negative	Door Frame			
106 : Classroom 106	W1	Wood	Blue	Chipping	Wood	0.1	Negative	Door			
106 : Classroom 106	W1	Wood	Light Blue	Chipping	Wood	0.1	Negative	Closet Door			
106 : Classroom 106	W1	Wood	Blue	Chipping	Wood	0	Negative	Chalkboard			
106 : Classroom 106	W1	Wood	Light Blue	Chipping	Wood	0.2	Negative	Coat Shelf			
106 : Classroom 106	W2	Wood	Light Blue	Chipping	Wood	0.1	Negative	Chalkboard Tray			
106 : Classroom 106	W3	Metal	Light Blue	Chipping	Metal	-0.1	Negative	Radiator			
106 : Classroom 106	W3	Metal	Blue	Chipping	Metal	0.1	Negative	Door Exit			
106 : Classroom 106	W4	Wood	Blue	Chipping	Wood	0.2	Negative	Chalkboard Frame			
Hall at Room 106	W2	Concrete	Muti	Chipping	Concrete	-0.3	Negative				
Hall at Room 106	W4	Concrete	Light Blue	Flaking	Concrete	-0.3	Negative				
Hall at Room 106	W2	Concrete	Blue	Chipping	Concrete	-0.2	Negative				
Hall at Room 106	W4	Wood	Blue	Chipping	Wood	0	Negative	Chalkboard Frame			
JC1 : Custodial Closet to Left of Classroom 106	W3	Concrete	Tan	Intact	Concrete	-0.3	Negative				

4B : Radiator Room outside of Classroom 103	N/A	N/A	N/A	N/A	N/A	N/A	N/A	N/A			
4B : Radiator Room outside of Classroom 103	N/A	N/A	N/A	N/A	N/A	N/A	N/A	N/A			
4A : Radiator Room to Right of Classroom C	N/A	N/A	N/A	N/A	N/A	N/A	N/A	N/A			
4A : Radiator Room to Right of Classroom C	N/A	N/A	N/A	N/A	N/A	N/A	N/A	N/A			
4A : Radiator Room to Right of Classroom C	N/A	N/A	N/A	N/A	N/A	N/A	N/A	N/A			
4A : Radiator Room to Right of Classroom C	N/A	N/A	N/A	N/A	N/A	N/A	N/A	N/A			
4A : Radiator Room to Right of Classroom C	N/A	N/A	N/A	N/A	N/A	N/A	N/A	N/A			
4 : Classroom C	N/A	N/A	N/A	N/A	N/A	N/A	N/A	N/A			
4 : Classroom C	N/A	N/A	N/A	N/A	N/A	N/A	N/A	N/A			
4 : Classroom C	N/A	N/A	N/A	N/A	N/A	N/A	N/A	N/A			
4 : Classroom C	N/A	N/A	N/A	N/A	N/A	N/A	N/A	N/A			
4 : Classroom C	N/A	N/A	N/A	N/A	N/A	N/A	N/A	N/A			
102 : Classroom 102	W1	Concrete	Tan	Flaking	Concrete	-0.1	Negative				
102 : Classroom 102	W2	Concrete	Tan	Flaking	Concrete	0	Negative				
102 : Classroom 102	W3	Concrete	Tan	Flaking	Concrete	-0.1	Negative				
102 : Classroom 102	W4	Concrete	Tan	Flaking	Concrete	-0.3	Negative				
102 : Classroom 102	W3	Concrete	Tan	Flaking	Concrete	0.2	Negative	Columns	15SF		
102 : Classroom 102	W3	Metal	Medium Blue	Chipping	Metal	0.3	Negative	Uni-vent			
102 : Classroom 102	W1	Wood	Medium Blue	Chipping	Wood	0	Negative	Chalkboard frame	8SF		
102 : Classroom 102	W2	Wood	Medium Blue	Flaking	Wood	0.2	Negative	Chalkboard frame	8SF		
101 : Classroom 101	W1	Wood	Medium Red	Intact	Wood	0	Negative	Door Frame Trim	4SF		
101 : Classroom 101	W1	Metal	Medium Blue	Deteriorating	Metal	0.1	Negative	Door Frame	4SF		
101 : Classroom 101	W1	Wood	Medium Blue	Deteriorating	Wood	0.1	Negative	Door	6SF		
101 : Classroom 101	W1	Wood	Medium Blue	Deteriorating	Wood	0.2	Negative	Inner Door Frame Trim	4SF		
101 : Classroom 101	W2	Wood	Medium Blue	Intact	Wood	-0.1	Negative	Closet Door Frame Trim	4SF		
101 : Classroom 101	W2	Wood	Medium Blue	Intact	Wood	0.1	Negative	Closet Door	6SF		
101 : Classroom 101	W1	Concrete	Tan	Deteriorating	Concrete	0.1	Negative				
101 : Classroom 101	W2	Concrete	Tan	Deteriorating	Concrete	0.1	Negative				
101 : Classroom 101	W3	Concrete	Tan	Deteriorating	Concrete	0	Negative				
101 : Classroom 101	W4	Concrete	Tan	Deteriorating	Concrete	0	Negative				
101 : Classroom 101	W4	Metal	Medium Blue	Intact	Metal	0.2	Negative	Uni-vent			
101 : Classroom 101	W4	Concrete	Tan	Deteriorating	Concrete	0.4	Negative	Columns	15SF		
101 : Classroom 101	W1	Wood	Medium Blue	Flaking	Wood	0	Negative	Chalkboard frame	24SF		
101 : Classroom 101	W2	Metal	Tan	Chipping	Metal	0.2	Negative	Riser			
100 : Classroom 100	N/A	N/A	N/A	N/A	N/A	N/A	N/A	N/A			
100 : Classroom 100	N/A	N/A	N/A	N/A	N/A	N/A	N/A	N/A			
100 : Classroom 100	N/A	N/A	N/A	N/A	N/A	N/A	N/A	N/A			
100 : Classroom 100	N/A	N/A	N/A	N/A	N/A	N/A	N/A	N/A			
100 : Classroom 100	N/A	N/A	N/A	N/A	N/A	N/A	N/A	N/A			
100 : Classroom 100	N/A	N/A	N/A	N/A	N/A	N/A	N/A	N/A			
100 : Classroom 100	N/A	N/A	N/A	N/A	N/A	N/A	N/A	N/A			
100A : Storage Closet in Classroom 101	W1	Wood	Medium Blue	Chipping	Wood	0.1	Negative	Door	6SF		
100A : Storage Closet in Classroom 101	W1	Metal	Medium Blue	Chipping	Metal	0.2	Negative	Door Frame	4SF		
100A : Storage Closet in Classroom 101	W1	Wood	Medium Blue	Chipping	Wood	0.3	Negative	Door Trim	4SF		
100A : Storage Closet in Classroom 101	W1	Metal	Medium Blue	Chipping	Metal	0.5	Negative	Door Frame	4SF		
100A : Storage Closet in Classroom 101	W1	Wood	Medium Blue	Chipping	Wood	0.3	Negative	Door	6SF		
100A : Storage Closet in Classroom 101	W1	Concrete	Light Green	Chipping	Concrete	0.1	Negative				
100A : Storage Closet in Classroom 101	W1	Concrete	Light Green	Chipping	Concrete	0.2	Negative	Columns	15SF		
100A : Storage Closet in Classroom 101	W2	Wood	Light Green	Chipping	Wood	0.5	Negative	Shelf	6SF		
100A : Storage Closet in Classroom 101	W2	Wood	Light Green	Chipping	Wood	0	Negative	Shelf Support	6SF		
100A : Storage Closet in Classroom 101	W4	Wood	Dark Blue	Chipping	Wood	0.3	Negative	Door Frame	4SF		
100B : Storage Closet in Classroom 101	N/A	N/A	N/A	N/A	N/A	N/A	N/A	N/A			
100B : Storage Closet in Classroom 101	N/A	N/A	N/A	N/A	N/A	N/A	N/A	N/A			
100B : Storage Closet in Classroom 101	N/A	N/A	N/A	N/A	N/A	N/A	N/A	N/A			
125 : Classroom 101 Restroom	W4	Concrete	Tan	Flaking	Concrete	0.1	Negative	Hall@ 125 Bath			
125 : Classroom 101 Restroom	W1	Wood	Tan	Flaking	Wood	0	Negative	Door	8SF		
125 : Classroom 101 Restroom	W1	Concrete	Tan	Flaking	Concrete	-0.1	Negative				
7 : Building Engineer's Office	W1	Concrete	Light Green	Deteriorating	Concrete	0	Negative				
7 : Building Engineer's Office	W2	Concrete	Light Green	Deteriorating	Concrete	0.3	Negative				

7 : Building Engineer's Office	W3	Concrete	Light Green	Deteriorating	Concrete	0	Negative			
7 : Building Engineer's Office	W4	Concrete	Light Green	Deteriorating	Concrete	0.1	Negative			
7 : Building Engineer's Office	W1	Wood	Dark Green	Chipping	Wood	0	Negative	Door Frame Trim	5SF	
7 : Building Engineer's Office	W1	Wood	Light Blue	Chipping	Wood	0.1	Negative	Door	8SF	
7 : Building Engineer's Office	W1	Metal	Light Blue	Chipping	Metal	0.1	Negative	Door Frame	4SF	
7 : Building Engineer's Office	W2	Concrete	Dark Green	Flaking	Concrete	0.2	Negative			
7 : Building Engineer's Office	W4	Concrete	Dark Green	Flaking	Concrete	0.1	Negative			
7 : Building Engineer's Office	W2	Metal	Tan	Flaking	Metal	0.6	Negative	Pipe		
7 : Building Engineer's Office	Ceiling	Concrete	Light Gray	Chipping	Concrete	0.2	Negative			
7 : Building Engineer's Office	Ceiling	Concrete	Light Gray	Chipping	Concrete	0.2	Negative			
7B : Building Engineer's Restroom	W1	Wood	Dark Green	Flaking	Wood	0	Negative	Door Trim	4SF	
7B : Building Engineer's Restroom	W2	Concrete	Light Green	Flaking	Concrete	0.1	Negative			
7B : Building Engineer's Restroom	W3	Concrete	Light Green	Flaking	Concrete	0.1	Negative			
7B : Building Engineer's Restroom	W4	Concrete	Light Green	Flaking	Concrete	0.1	Negative			
7B : Building Engineer's Restroom	N/A	N/A	N/A	N/A	N/A	N/A	N/A	N/A		
6 : Staff Maintenance Lounge	N/A	N/A	N/A	N/A	N/A	N/A	N/A	N/A		
6 : Staff Maintenance Lounge	N/A	N/A	N/A	N/A	N/A	N/A	N/A	N/A		
6 : Staff Maintenance Lounge	N/A	N/A	N/A	N/A	N/A	N/A	N/A	N/A		
6 : Staff Maintenance Lounge	N/A	N/A	N/A	N/A	N/A	N/A	N/A	N/A		
6 : Staff Maintenance Lounge	N/A	N/A	N/A	N/A	N/A	N/A	N/A	N/A		
006A : Staff Maintenance Lounge Restroom	N/A	N/A	N/A	N/A	N/A	N/A	N/A	N/A		
006A : Staff Maintenance Lounge Restroom	N/A	N/A	N/A	N/A	N/A	N/A	N/A	N/A		
006A : Staff Maintenance Lounge Restroom	N/A	N/A	N/A	N/A	N/A	N/A	N/A	N/A		
006A : Staff Maintenance Lounge Restroom	N/A	N/A	N/A	N/A	N/A	N/A	N/A	N/A		
006A : Staff Maintenance Lounge Restroom	N/A	N/A	N/A	N/A	N/A	N/A	N/A	N/A		
3 : Boiler Room	W1	Metal	Light Blue	Intact	Metal	2.7	Positive	Door	2SF	
3 : Boiler Room	W2	Metal	Dark Green	Flaking	Metal	1.2	Positive	Railing	15SF	
3 : Boiler Room	W1	Metal	Light Blue	Flaking	Metal	2	Positive	Hall Door	8SF	
3 : Boiler Room	W4	Metal	Dark Green	Flaking	Metal	1	Positive	Railing (steps)	15SF	
3 : Boiler Room	W3	Metal	Gray	Flaking	Metal	3.8	Positive	Door	8SF	
3 : Boiler Room	W1	metal	Blue	Chipping	Metal	2.4	Positive	Exit Door @ Hall	8SF	
3 : Boiler Room	W1	Metal	Dark Green	Flaking	Metal	0.3	Negative	Door Frame	6SF	
3 : Boiler Room	W2	Concrete	Light Gray	Intact	Concrete	-0.1	Negative	Hall @ Boiler Room		
3 : Boiler Room	W4	Concrete	Light Gray	Intact	Concrete	-0.3	Negative	Hall @ Boiler Room		
3 : Boiler Room	W2	Concrete	Gray	Flaking	Concrete	0.2	Negative			
3 : Boiler Room	W2	Concrete	Medium Green	Flaking	Concrete	0.1	Negative			
3 : Boiler Room	W4	Concrete	Medium Green	Flaking	Concrete	0.2	Negative			
3 : Boiler Room	W1	Concrete	Medium Green	Flaking	Concrete	0.1	Negative			
3 : Boiler Room	W4	Metal	Gray	Flaking	Metal	0.5	Negative	Railing		
3 : Boiler Room	W1	Concrete	Gray	Flaking	Concrete	0.5	Negative			
3 : Boiler Room	W4	Concrete	Gray	Flaking	Concrete	0.2	Negative			
3 : Boiler Room	W2	Concrete	Gray	Flaking	Concrete	0.3	Negative			
3 : Boiler Room	W3	Concrete	Gray	Flaking	Concrete	0	Negative			
1 : Left Side Boiler Storage	W1	Metal	Dark Green	Flaking	Metal	0.6	Negative	Door Frame	6SF	
1 : Left Side Boiler Storage	W1	Pipe	Tan	Flaking	Pipe	0.1	Negative	Wrap		
1 : Left Side Boiler Storage	N/A	N/A	N/A	N/A	N/A	N/A	N/A	N/A		
1 : Left Side Boiler Storage	N/A	N/A	N/A	N/A	N/A	N/A	N/A	N/A		
1 : Left Side Boiler Storage	N/A	N/A	N/A	N/A	N/A	N/A	N/A	N/A		
2 : Right Side Boiler Storage Room	N/A	N/A	N/A	N/A	N/A	N/A	N/A	N/A		
2 : Right Side Boiler Storage Room	N/A	N/A	N/A	N/A	N/A	N/A	N/A	N/A		
2 : Right Side Boiler Storage Room	N/A	N/A	N/A	N/A	N/A	N/A	N/A	N/A		
Stairwell at Boiler Room	W1	Metal	Brown	Chipping	Metal	0.2	Negative	Post		
Stairwell at Boiler Room	W1	Metal	Red	Chipping	Metal	0.3	Negative	Door	8SF	
Stairwell at Boiler Room	W4	Concrete	Tan	Flaking	Concrete	-0.3	Negative			
Stairwell at Boiler Room	W3	Metal	Blue	Flaking	Metal	0	Negative	Door Exit		
Stairwell at Boiler Room	Ceiling	Concrete	Tan	Flaking	Concrete	-0.1	Negative			
Stairwell at Boiler Room	W1	Metal	Blue	Chipping	Metal	0.4	Negative	Door	8SF	
Stairwell at Boiler Room	W2	Metal	Brown	Chipping	Metal	0.1	Negative	Riser		
H11A : Hallway next to Classrooms 101 through Classroom B	W2	Concrete	Tan	Flaking	Concrete	-0.1	Negative			

226 : Kitchen	N/A	N/A	N/A	N/A	N/A	N/A	N/A	N/A	N/A			
226B : Storage Area with Windows to Left of Kitchen	N/A	N/A	N/A	N/A	N/A	N/A	N/A	N/A	N/A			
226B : Storage Area with Windows to Left of Kitchen	N/A	N/A	N/A	N/A	N/A	N/A	N/A	N/A	N/A			
226B : Storage Area with Windows to Left of Kitchen	N/A	N/A	N/A	N/A	N/A	N/A	N/A	N/A	N/A			
226B : Storage Area with Windows to Left of Kitchen	N/A	N/A	N/A	N/A	N/A	N/A	N/A	N/A	N/A			
226B : Storage Area with Windows to Left of Kitchen	N/A	N/A	N/A	N/A	N/A	N/A	N/A	N/A	N/A			
226B : Storage Area with Windows to Left of Kitchen	N/A	N/A	N/A	N/A	N/A	N/A	N/A	N/A	N/A			
226A : Storage in Rear Kitchen Area	N/A	N/A	N/A	N/A	N/A	N/A	N/A	N/A	N/A			
226A : Storage in Rear Kitchen Area	N/A	N/A	N/A	N/A	N/A	N/A	N/A	N/A	N/A			
226A : Storage in Rear Kitchen Area	N/A	N/A	N/A	N/A	N/A	N/A	N/A	N/A	N/A			
226C : Kitchen Office	N/A	N/A	N/A	N/A	N/A	N/A	N/A	N/A	N/A			
226C : Kitchen Office	N/A	N/A	N/A	N/A	N/A	N/A	N/A	N/A	N/A			
226C : Kitchen Office	N/A	N/A	N/A	N/A	N/A	N/A	N/A	N/A	N/A			
221 : Storage in Rear of Cafeteria at Exit Doors	N/A	N/A	N/A	N/A	N/A	N/A	N/A	N/A	N/A			
221A : Storage in Rear of Cafeteria by Exit Doors (Closer to Cafe)	N/A	N/A	N/A	N/A	N/A	N/A	N/A	N/A	N/A			
221A : Storage in Rear of Cafeteria by Exit Doors (Closer to Cafe)	N/A	N/A	N/A	N/A	N/A	N/A	N/A	N/A	N/A			
221A : Storage in Rear of Cafeteria by Exit Doors (Closer to Cafe)	N/A	N/A	N/A	N/A	N/A	N/A	N/A	N/A	N/A			
218A : Storage Closet between Cafeteria and Gymnasium	N/A	N/A	N/A	N/A	N/A	N/A	N/A	N/A	N/A			
218A : Storage Closet between Cafeteria and Gymnasium	N/A	N/A	N/A	N/A	N/A	N/A	N/A	N/A	N/A			
218A : Storage Closet between Cafeteria and Gymnasium	N/A	N/A	N/A	N/A	N/A	N/A	N/A	N/A	N/A			
218A : Storage Closet between Cafeteria and Gymnasium	N/A	N/A	N/A	N/A	N/A	N/A	N/A	N/A	N/A			
218A : Storage Closet between Cafeteria and Gymnasium	N/A	N/A	N/A	N/A	N/A	N/A	N/A	N/A	N/A			
203 : Classroom 203	Ceiling	Concrete	Light Green	Flaking	Concrete	0.2	Negative					
203 : Classroom 203	W2	Concrete	Light Green	Flaking	Concrete	-0.2	Negative					
203 : Classroom 203	W1	Wood	Blue	Wood	Wood	0.1	Negative	Chalkboard Tray	10SF			
203 : Classroom 203	N/A	N/A	N/A	N/A	N/A	N/A	N/A	N/A	N/A			
203 : Classroom 203	N/A	N/A	N/A	N/A	N/A	N/A	N/A	N/A	N/A			
203 : Classroom 203	N/A	N/A	N/A	N/A	N/A	N/A	N/A	N/A	N/A			
218B : Display Case Storage Closet Next to Cafeteria	N/A	N/A	N/A	N/A	N/A	N/A	N/A	N/A	N/A			
218B : Display Case Storage Closet Next to Cafeteria	N/A	N/A	N/A	N/A	N/A	N/A	N/A	N/A	N/A			
218B : Display Case Storage Closet Next to Cafeteria	N/A	N/A	N/A	N/A	N/A	N/A	N/A	N/A	N/A			
218B : Display Case Storage Closet Next to Cafeteria	N/A	N/A	N/A	N/A	N/A	N/A	N/A	N/A	N/A			
218C : Display Case Storage next to Custodial Closet at Cafeteria	N/A	N/A	N/A	N/A	N/A	N/A	N/A	N/A	N/A			
218C : Display Case Storage next to Custodial Closet at Cafeteria	N/A	N/A	N/A	N/A	N/A	N/A	N/A	N/A	N/A			
218C : Display Case Storage next to Custodial Closet at Cafeteria	N/A	N/A	N/A	N/A	N/A	N/A	N/A	N/A	N/A			
218C : Display Case Storage next to Custodial Closet at Cafeteria	N/A	N/A	N/A	N/A	N/A	N/A	N/A	N/A	N/A			
218C : Display Case Storage next to Custodial Closet at Cafeteria	N/A	N/A	N/A	N/A	N/A	N/A	N/A	N/A	N/A			
218D : Custodial Closet between Stairwell 1 and Cafeteria	N/A	N/A	N/A	N/A	N/A	N/A	N/A	N/A	N/A			
218D : Custodial Closet between Stairwell 1 and Cafeteria	N/A	N/A	N/A	N/A	N/A	N/A	N/A	N/A	N/A			
218D : Custodial Closet between Stairwell 1 and Cafeteria	N/A	N/A	N/A	N/A	N/A	N/A	N/A	N/A	N/A			
218E : Storage to Right of Gym Entrance	N/A	N/A	N/A	N/A	N/A	N/A	N/A	N/A	N/A			
218E : Storage to Right of Gym Entrance	N/A	N/A	N/A	N/A	N/A	N/A	N/A	N/A	N/A			
218E : Storage to Right of Gym Entrance	N/A	N/A	N/A	N/A	N/A	N/A	N/A	N/A	N/A			
218F : Math Book Storage Closet next to Gymnasium	N/A	N/A	N/A	N/A	N/A	N/A	N/A	N/A	N/A			
218F : Math Book Storage Closet next to Gymnasium	N/A	N/A	N/A	N/A	N/A	N/A	N/A	N/A	N/A			
218F : Math Book Storage Closet next to Gymnasium	N/A	N/A	N/A	N/A	N/A	N/A	N/A	N/A	N/A			
218G : Storage at Front of Gym next to Math Storage Closet	N/A	N/A	N/A	N/A	N/A	N/A	N/A	N/A	N/A			
218G : Storage at Front of Gym next to Math Storage Closet	N/A	N/A	N/A	N/A	N/A	N/A	N/A	N/A	N/A			
218G : Storage at Front of Gym next to Math Storage Closet	N/A	N/A	N/A	N/A	N/A	N/A	N/A	N/A	N/A			
218G : Storage at Front of Gym next to Math Storage Closet	N/A	N/A	N/A	N/A	N/A	N/A	N/A	N/A	N/A			
218G : Storage at Front of Gym next to Math Storage Closet	N/A	N/A	N/A	N/A	N/A	N/A	N/A	N/A	N/A			
218 : Gymnasium	W1	Concrete	White	Flaking	Concrete	-0.4	Negative					
218 : Gymnasium	W2	Concrete	White	Flaking	Concrete	-0.3	Negative					
218 : Gymnasium	W3	Concrete	White	Flaking	Concrete	-0.1	Negative					
218 : Gymnasium	W4	Concrete	White	Flaking	Concrete	-0.3	Negative					
218 : Gymnasium	W3	Wood	Light Blue	Flaking	Wood	0.1	Negative	Door	8SF			
218 : Gymnasium	W4	Wood	Light Blue	Flaking	Wood	0.1	Negative	Door Frame Trim	10SF			
218 : Gymnasium	W3	Wood	Blue	Chipping	Wood	0.1	Negative	Door	8SF			
218 : Gymnasium	W3	Metal	Blue	Chipping	Metal	0.2	Negative	Door	8SF			

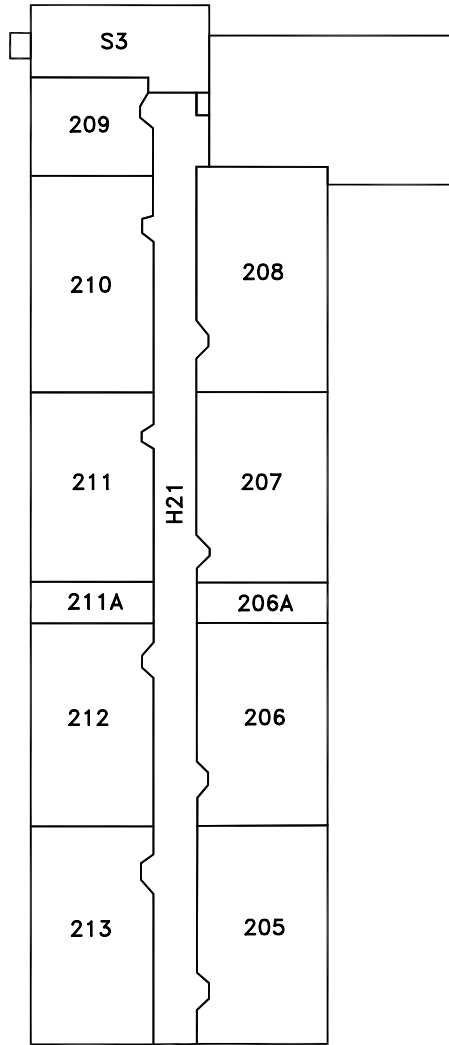
206A : Science Materials Storage next to Classroom 207	N/A	N/A	N/A	N/A	N/A	N/A	N/A	N/A			
206A : Science Materials Storage next to Classroom 207	N/A	N/A	N/A	N/A	N/A	N/A	N/A	N/A			
207 : Classroom 207	Ceiling	Concrete	White	Chipping	Concrete	0	Negative				
207 : Classroom 207	W1	Concrete	Light Blue	Chipping	Concrete	0.1	Negative				
207 : Classroom 207	W2	Concrete	Light Blue	Chipping	Concrete	-0.2	Negative				
207 : Classroom 207	W3	Concrete	Light Blue	Chipping	Concrete	-0.3	Negative				
207 : Classroom 207	W4	Concrete	Light Blue	Chipping	Concrete	-0.2	Negative				
207 : Classroom 207	W1	Wood	Light Green	Chipping	Wood	0.2	Negative	Chalkboard frame	6SF		
207 : Classroom 207	W2	Wood	Light Green	Chipping	Wood	0.2	Negative	Chalkboard frame	6SF		
207 : Classroom 207	W4	Wood	Light Green	Chipping	Wood	0.2	Negative	Chalkboard frame	6SF		
207 : Classroom 207	W3	Metal	Light Green	Chipping	Metal	0	Negative	Radiator	8SF		
207 : Classroom 207	W1	Wood	Light Green	Chipping	Wood	0.2	Negative	Coat Rack	4SF		
207 : Classroom 207	W1	Wood	Blue	Chipping	Wood	0.2	Negative	Chalkboard Tray	6SF		
207 : Classroom 207	W4	Wood	Blue	Chipping	Wood	0.2	Negative	Chalkboard Tray	6SF		
207 : Classroom 207	W1	Metal	Light Green	Chipping	Metal	0	Negative	Closet Door Frame	6SF		
207 : Classroom 207	W1	Metal	Blue	Chipping	Metal	0.1	Negative	Door Frame	6SF		
207 : Classroom 207	W1	Metal	Light Green	Chipping	Metal	0.3	Negative	Door	8SF		
211 : Classroom 211	W1	Concrete		Flaking	Concrete	-0.2	Negative				
211 : Classroom 211	W2	Concrete		Flaking	Concrete	-0.5	Negative				
211 : Classroom 211	W3	Concrete		Flaking	Concrete	-0.3	Negative				
211 : Classroom 211	W4	Concrete		Flaking	Concrete	-0.4	Negative				
211 : Classroom 211	W1	Wood	Blue	Chipping	Wood	0	Negative	Chalkboard Tray	6SF		
211 : Classroom 211	W4	Wood	Blue	Chipping	Wood	0	Negative	Chalkboard Tray	6SF		
211 : Classroom 211	W1	Wood	Green	Chipping	Wood	0.1	Negative	Closet Door Frame	6SF		
211 : Classroom 211	W1	Metal	Blue	Chipping	Metal	0.3	Negative	Door Frame	6SF		
211 : Classroom 211	W1	Wood	Green	Chipping	Wood	0.1	Negative	Chalkboard Frame	6SF		
211 : Classroom 211	W2	Wood	Green	Chipping	Wood	0.1	Negative	Chalkboard Frame	6SF		
211 : Classroom 211	W4	Wood	Green	Chipping	Wood	0.1	Negative	Chalkboard frame	6SF		
211 : Classroom 211	W1	Wood	Blue	Chipping	Wood	0	Negative	Coat Rack	4SF		
211 : Classroom 211	Ceiling	Concrete	White	Chipping	Concrete	0.2	Negative				
211A : Book Storage next to Classroom 212	W1	Concrete	Tan	Chipping	Concrete	-0.1	Negative				
211A : Book Storage next to Classroom 212	W2	Concrete	Tan	Chipping	Concrete	-0.2	Negative				
211A : Book Storage next to Classroom 212	W3	Concrete	Tan	Chipping	Concrete	-0.4	Negative				
211A : Book Storage next to Classroom 212	W4	Concrete	Tan	Chipping	Concrete	-0.3	Negative				
211A : Book Storage next to Classroom 212	W4	Wood	Brown	Chipping	Concrete	-0.1	Negative	Shelf			
211A : Book Storage next to Classroom 212	Ceiling	Concrete	White	Chipping	Concrete	0.2	Negative				
208 : Classroom 208	Ceiling	Concrete	White	Flaking	Concrete	0.1	Negative				
208 : Classroom 208	W1	Concrete	Light Blue	Flaking	Concrete	-0.5	Negative				
208 : Classroom 208	W2	Concrete	Light Blue	Flaking	Concrete	-0.2	Negative				
208 : Classroom 208	W3	Concrete	Light Blue	Flaking	Concrete	0.2	Negative				
208 : Classroom 208	W4	Concrete	Light Blue	Flaking	Concrete						
208 : Classroom 208	W2	Wood	Light Blue	Chipping	Wood	0	Negative	Chalkboard Trim	6SF		
208 : Classroom 208	W1	Wood	Light Blue	Chipping	Wood	0.1	Negative	Coat Rack	4SF		
208 : Classroom 208	W3	Metal	Light Green	Chipping	Metal	0.5	Negative	Radiator	4SF		
208 : Classroom 208	W3	Concrete	Light Green	Flaking	Concrete	0.1	Negative	Columns	12SF		
208 : Classroom 208	W1	Metal	Blue	Chipping	Metal	0.2	Negative	Door Frame	6SF		
208 : Classroom 208	W1	Wood	Light Green	Chipping	Wood	0	Negative	Closet Door Frame	6SF		
208 : Classroom 208	W1	Wood	Light Green	Chipping	Wood	0.1	Negative	Closet Door	8SF		
210 : Classroom 210	W1	Concrete	Light Green	Chipping	Concrete	-0.2	Negative				
210 : Classroom 210	W2	Concrete	Light Green	Chipping	Concrete	-0.2	Negative				
210 : Classroom 210	W3	Concrete	Light Green	Chipping	Concrete	0.3	Negative				
210 : Classroom 210	W4	Concrete	Light Green	Chipping	Concrete	0.1	Negative				
210 : Classroom 210		Metal	Light Green	Chipping	Metal	0.2	Negative	Radiator	10SF		
210 : Classroom 210	W1	Wood	Blue	Chipping	Wood	0.1	Negative	Chalkboard Tray	6SF		
210 : Classroom 210	W1	Wood	Blue	Chipping	Wood	0	Negative	Door	8SF		
210 : Classroom 210	W1	Wood	Light Green	Chipping	Wood	0.1	Negative	Closet Door Trim	6SF		
210 : Classroom 210	W1	Wood	Light Green	Chipping	Wood	0.1	Negative	Coat Rack	4SF		
210 : Classroom 210	Ceiling	Concrete	Tan	Flaking	Concrete	0.2	Negative				
210 : Classroom 210	W1	Wood	Light Green	Chipping	Wood	0	Negative	Chalkboard Trim	6SF		



NOT TO SCALE

LEGEND
H = HALLWAY
S = STAIRS

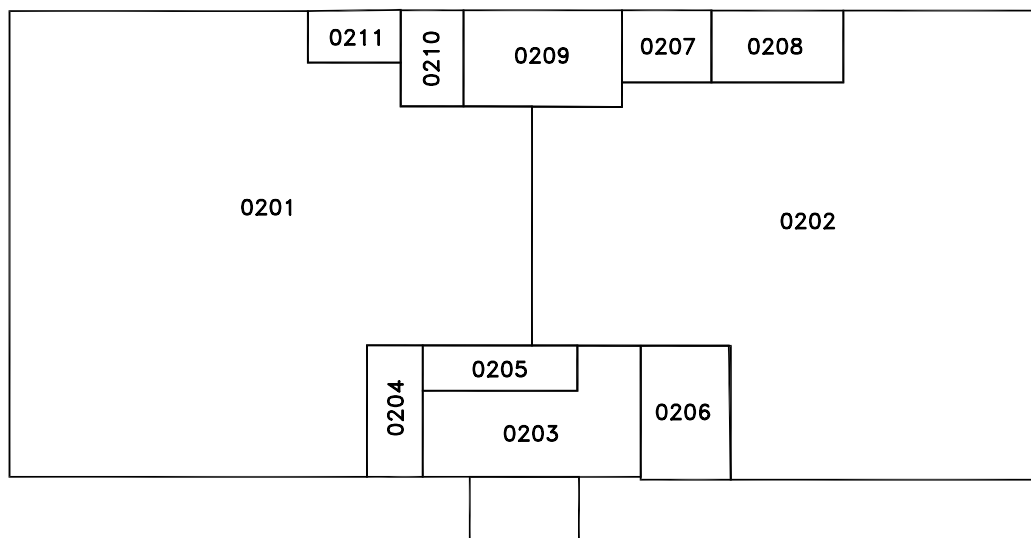
SCHOOL NUMBER - 4280 - CELEMENT - 01 FLOOR - 1B



LEGEND
H = HALLWAY
S = STAIRS

NOT TO SCALE

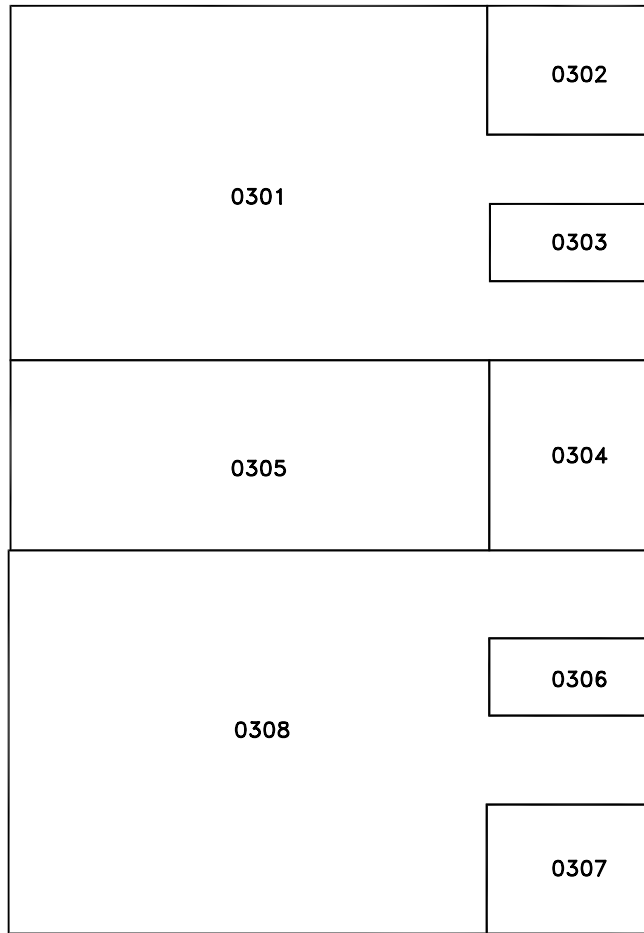
SCHOOL NUMBER - 4280 - CELEMENT - 01 FLOOR - 2B



NOT TO SCALE

LEGEND
H = HALLWAY
S = STAIRS

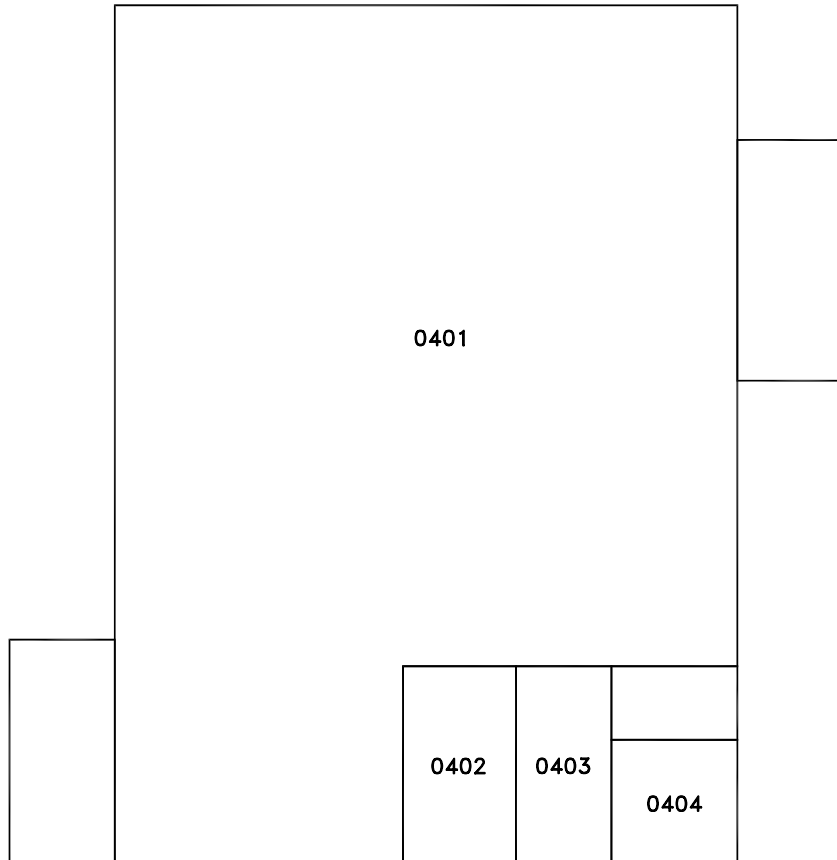
SCHOOL NUMBER - 42801 - FLOOR - 01



NOT TO SCALE

LEGEND
H = HALLWAY
S = STAIRS

SCHOOL NUMBER - 4280 - CEMENT - 03 FLOOR - 01



NOT TO SCALE

LEGEND
H = HALLWAY
S = STAIRS

SCHOOL NUMBER - 4280 CEMENT - 04 FLOOR - 01