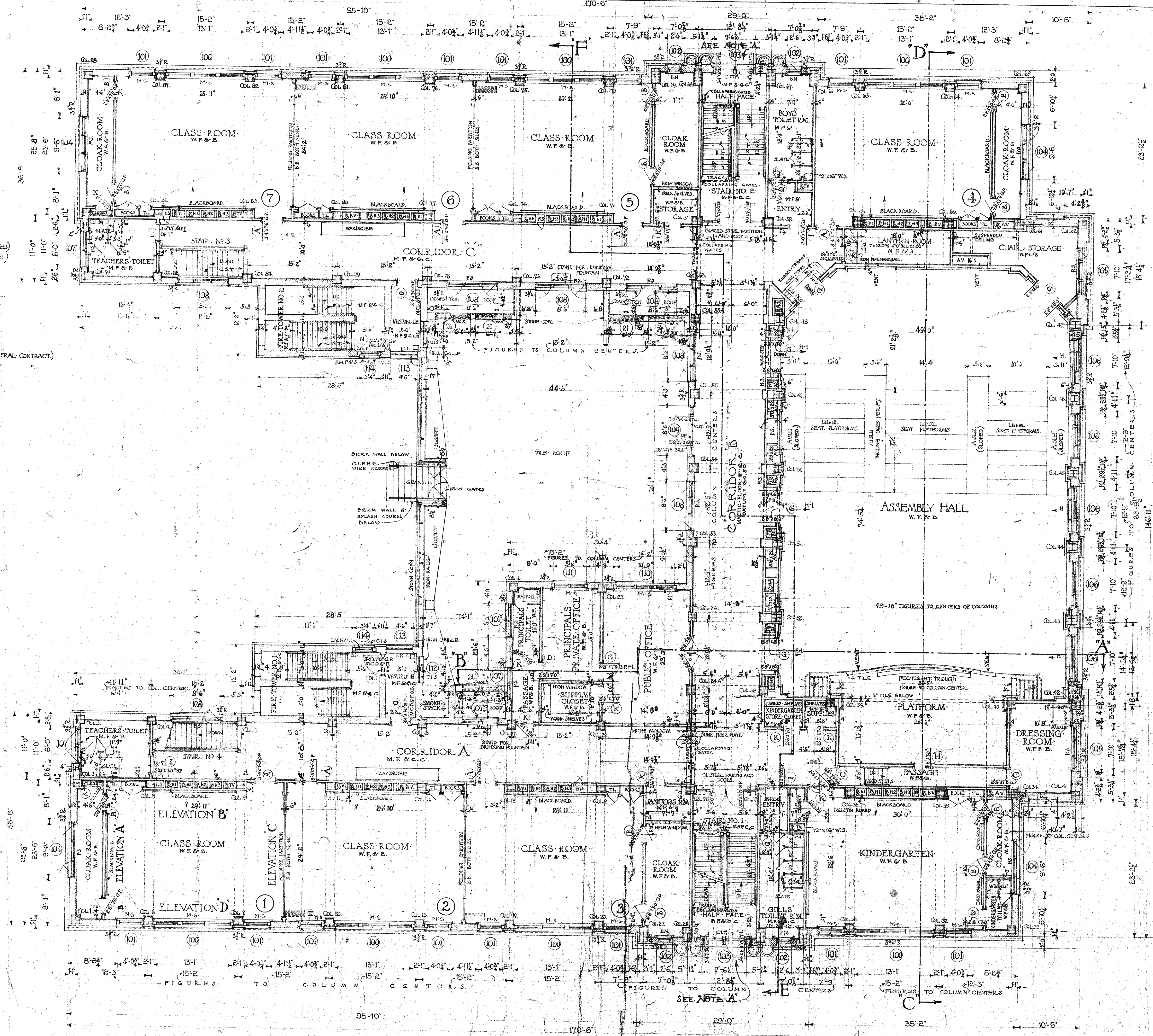


INDEX OF MATERIALS

INDICATES	BRICKWORK
"	HOLLOW TILE
"	STONEWORK
"	CONCRETE
H	HEAT FLUE
V	VENT FLUE
AV	ASSEMBLY ROOM FLUE
TV	TOILET VENT
BY	BASEMENT VENT
CRV	CLOAK ROOM VENT
FS	PIPE SPACE
GP	GLASS PANEL
GPTL	GLASS PANEL TRANSOM LIGHT
BN	BULL NOSE BRICK STUOL
MS	MARBLE STUOL
SS	SLOPING STUOL
SM-F&S	SHEET METAL FRAME AND JASH
CIS	CAST IRON SILL
CIT	ANTI SLIP THRESHOLD
MCD&F	METAL COVERED DOOR & FRAME (ROTH SIDES)
MCD&FOS	METAL COVERED DOOR & FRAME (ONE SIDE)
R.C.	RAIN CONDUCTOR
TL	TEACHERS LOCKER
J	JOINT
MF&B	MASTIC FLOOR AND CEMENT BASE
WF&B	WOOD FLOOR AND BASE
M.S.	MARBLE SAFE
O.B.W.	GLAZED BRICK WAINSCOT
WS	WIRE SCREEN
FS	PLASTERED STUOL
SMDIF	SHEET METAL DUCT IN FLOOR (NOT IN GENERAL CONTRACT)
SMDA	SHEET METAL DUCT ABOVE
S.T.	SAFETY TREADS
GPFL	GLASS PANEL FULL LENGTH
M.F.C.C.	MASTIC FLOOR, CEMENT COVE.

INDEX FOR ELEVATIONS

INDICATES	BRICKWORK
"	LIMESTONE
"	GRANITE
I.F.A.	IRON FACE ANGLE
I.P.H.R.	IRON PIPE HANDRAIL
S.S.	STONE SILL
H	HINGED
S	STATIONARY
D.H.	DOUBLE HUNG



FIRST FLOOR PLAN
SCALE 1/8" = 1'-0"

FINAL CHECKED NOV. 1, 1920.

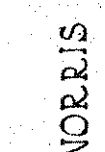
PREPARED IN THE OFFICE OF THE
Supt. OF SCHOOLS
OF THE
BOARD OF PUBLIC EDUCATION
SCHOOL DISTRICT OF PHILADELPHIA

5
Catharine
Yocum & Plough
J. D. Cassell
K. L. Brown

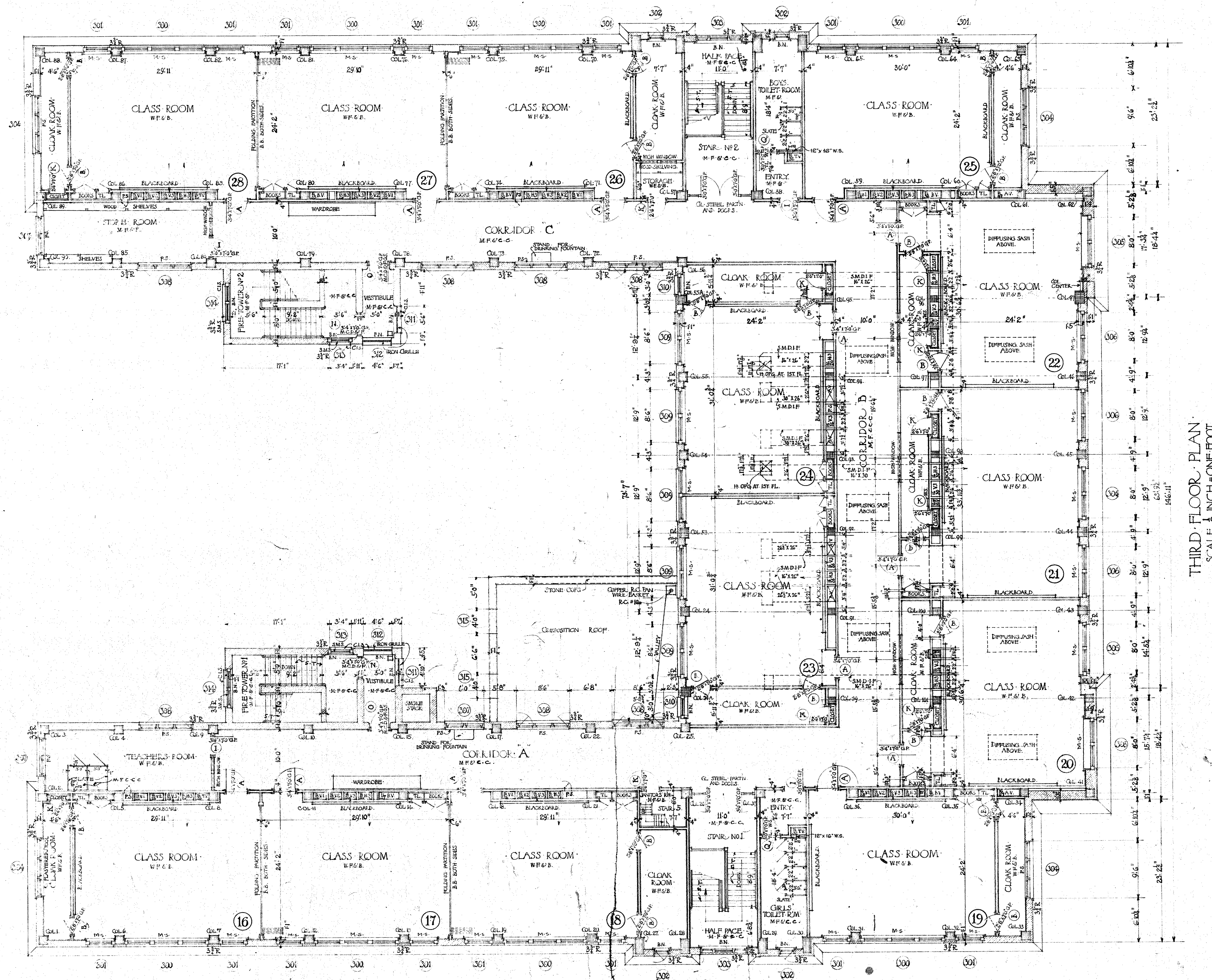
FIRST FLOOR PLAN SCALE 1/8" = 1'-0" NEW PUBLIC SCHOOL BUILDING FOR THE SCHOOL DISTRICT OF PHILADELPHIA

NOTE "A"

James O. Catharine, R.A.
Architect, March 14, 1919



TYPE	137	6
------	-----	---



THIRD FLOOR PLAN
SCALE 1/8" = 1'-0"

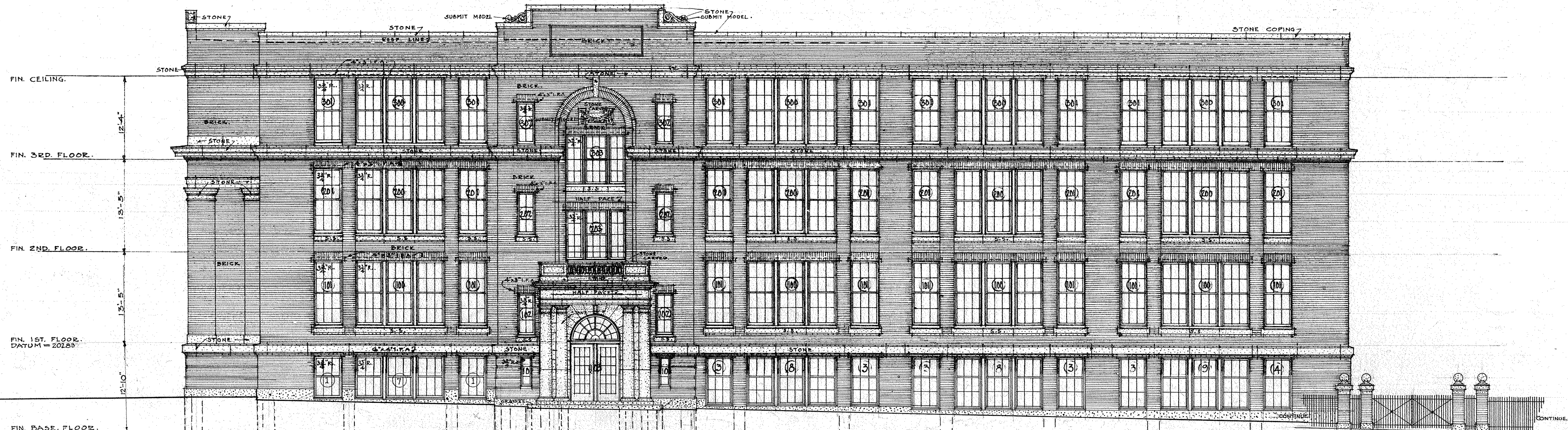
FINAL CHECKED NOV. 1, 1920.

THIRD FLOOR PLAN
SCALE 1/8" = 1'-0"

NEW PUBLIC SCHOOL BUILDING
FOR THE
SCHOOL DISTRICT OF PHILADELPHIA
PENNSYLVANIA

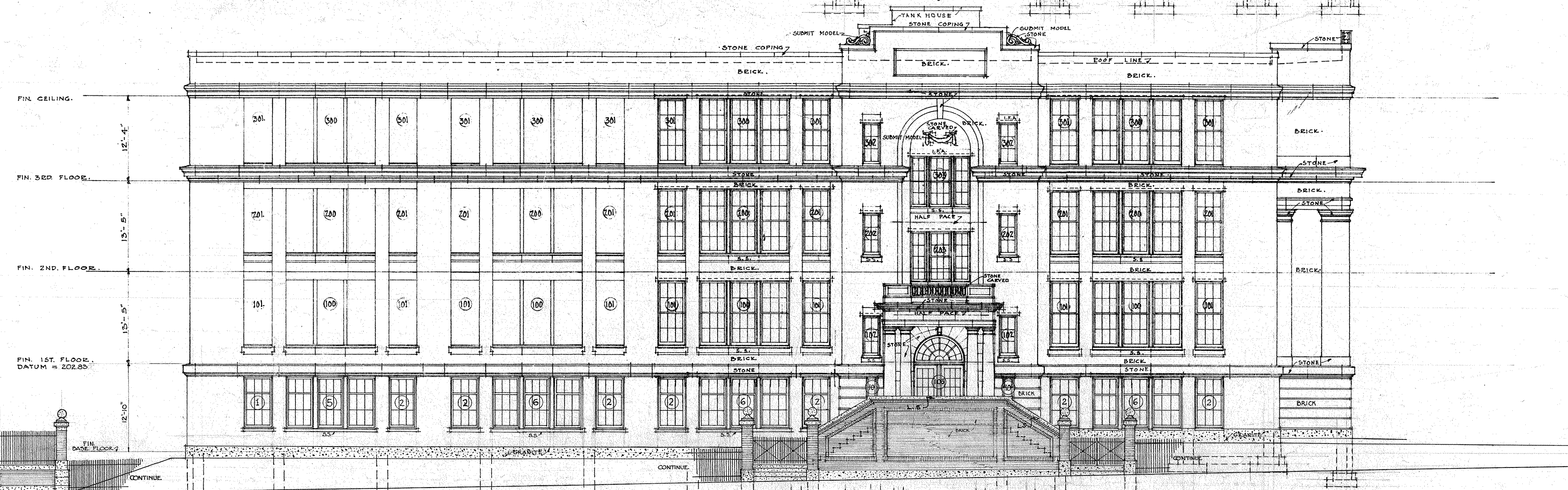
NOTE FOR INDEX OF MATERIAL SEE
SHEET NO. 20-A-5
J. H. B. & S. R. A. ARCHITECTS
March 11, 1921

TYPE 137 7



A T W O O D ROAD ELEVATION

SCALE ONE EIGHTH INCH EQUALS ONE FOOT



K E N M O R E ROAD ELEVATION

SCALE ONE EIGHTH INCH EQUALS ONE FOOT

NEW PUBLIC SCHOOL BUILDING
FOR THE
SCHOOL DISTRICT OF PHILADELPHIA
PENNSYLVANIA

NOTE: FOR INDEX OF MATERIAL SEE
SHEET NO 20 A-5

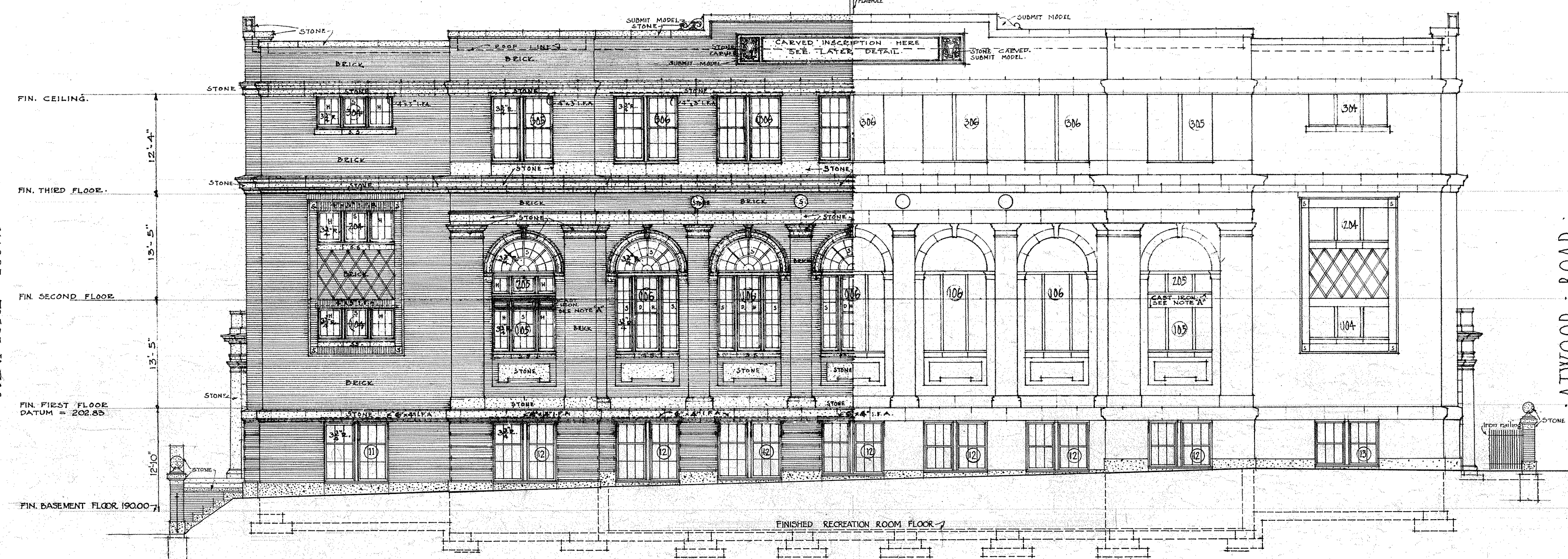
34D
TYPE 137 11

PREPARED IN THE OFFICE OF THE
SUPT. OF BUILDINGS
OF THE
BOARD OF PUBLIC EDUCATION
SCHOOL DISTRICT OF PHILA. PA.
19th St. above Chestnut Street

BUILDING NUMBER: 34-D
LANDSDOWNE AVE & KENMORE ROAD
DRAWN BY TITUS
CHECKED BY PEDRICK
APPROVAL SIGNATURES
DATE 1/24/22

KENMORE ROAD

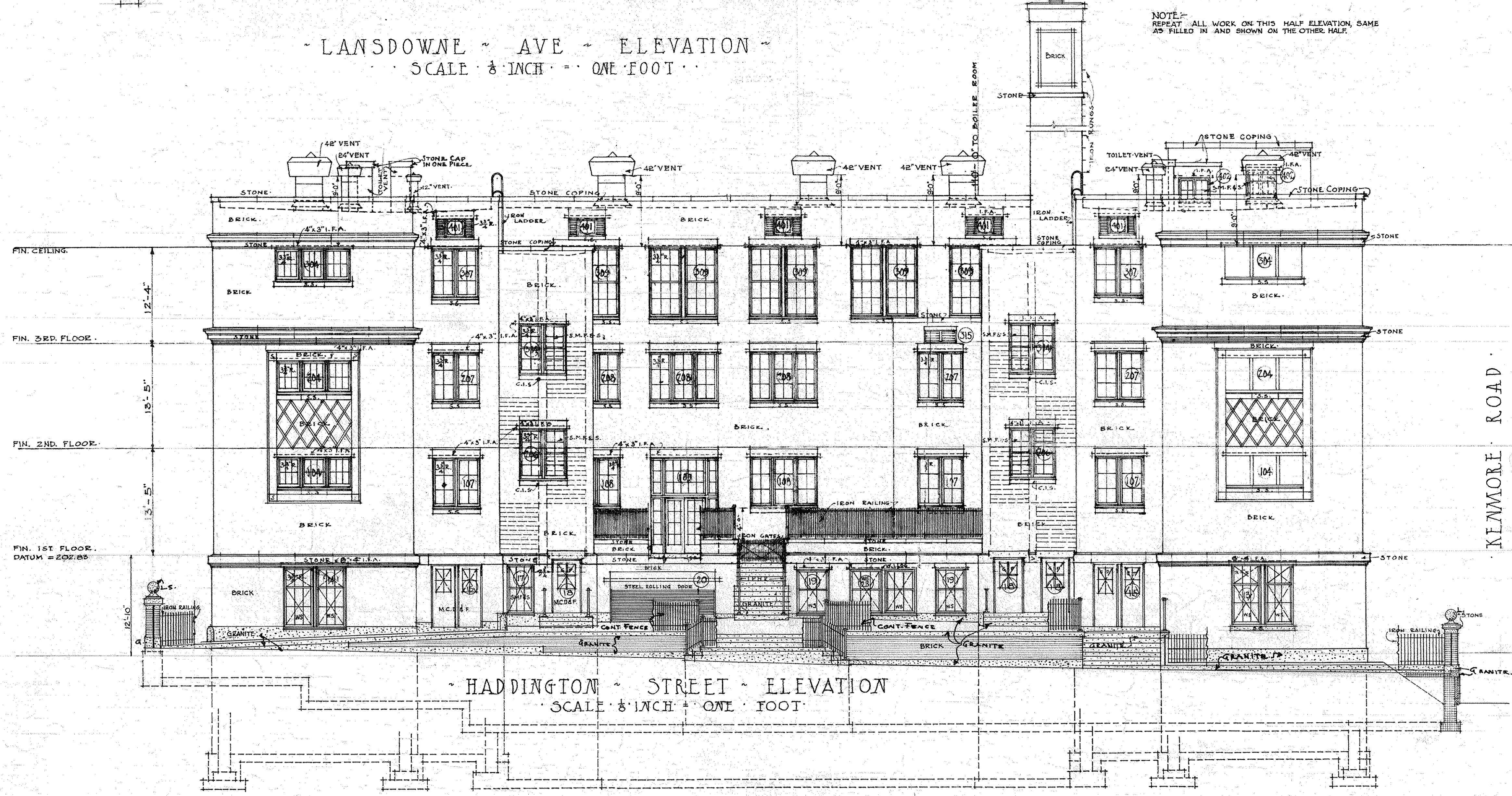
FIN. CEILING.
12'-4"
FIN. THIRD FLOOR.
13'-5"
FIN. SECOND FLOOR.
13'-5"
FIN. FIRST FLOOR.
DATUM = 202.85
FIN. BASEMENT FLOOR 190.00-71



~ LANSDOWNE ~ AVE ~ ELEVATION ~
SCALE 3/8" INCH = ONE FOOT

ATWOOD ROAD

FIN. CEILING.
12'-4"
FIN. 3RD. FLOOR.
13'-5"
FIN. 2ND. FLOOR.
13'-5"
FIN. 1ST FLOOR.
DATUM = 202.85

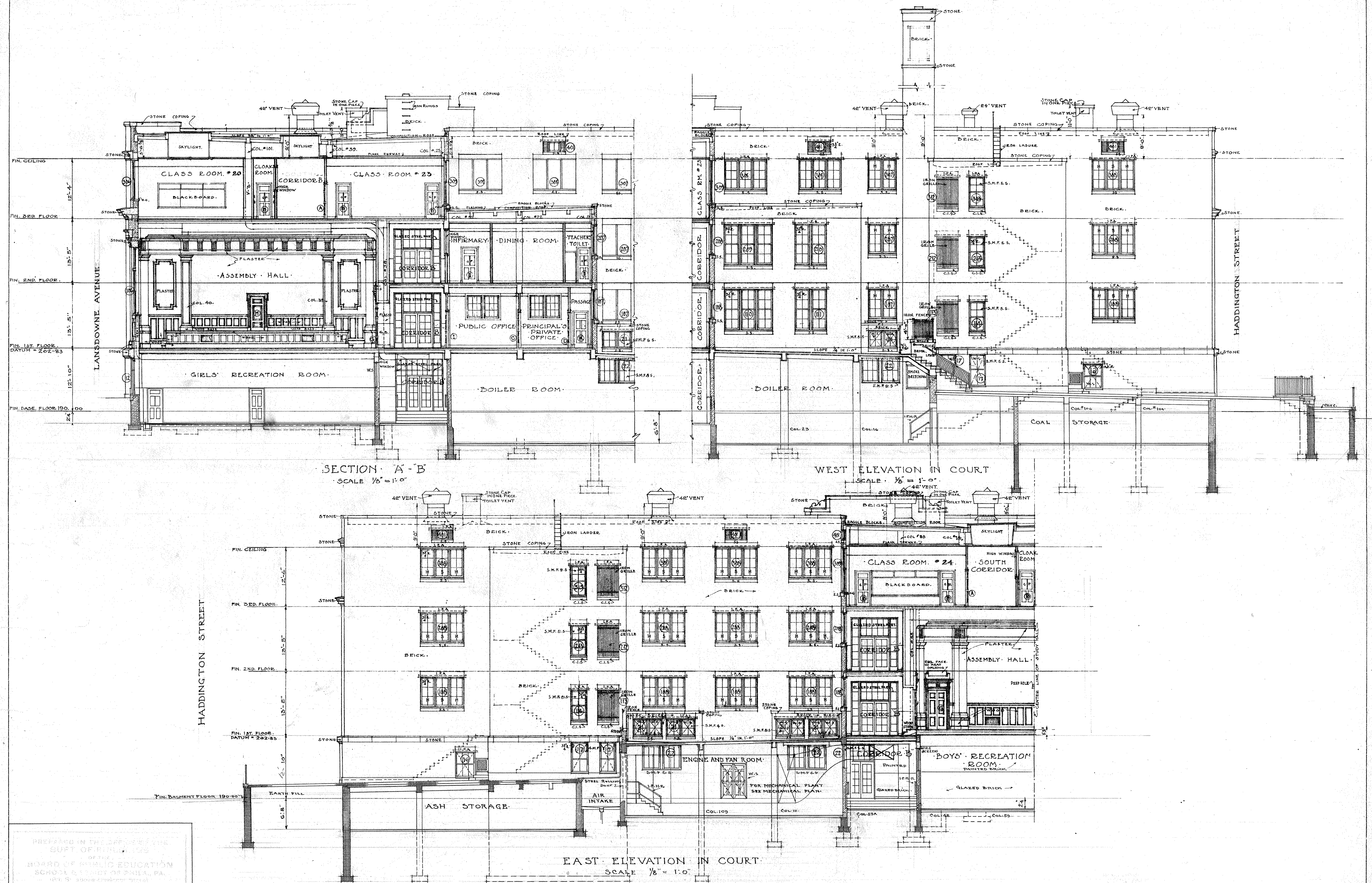


~ HADDINGTON ~ STREET ~ ELEVATION ~
SCALE 3/8" INCH = ONE FOOT

NEW PUBLIC SCHOOL BUILDING
FOR THE
SCHOOL DISTRICT OF PHILADELPHIA
PENNSYLVANIA

NOTE: A:
MOULDED CAST IRON FACING BETWEEN
WINDOWS NOS. 105 AND 205 TO BE
FURNISHED BY LIGHT IRON CONTRACTOR
NOTE: FOR INDEX OF MATERIAL SEE
SHEET NO. 20-A5

PREPARED IN THE OFFICE OF THE
SUPT. OF BUILDINGS
OF THE
BOARD OF PUBLIC EDUCATION
SCHOOL DISTRICT OF PHILADELPHIA
10th St. above Chestnut Street
BUILDING NUMBER 34-D
LOCATION LANSDOWNE AVE. & KENMORE RD.
ARCHT. NO. 10. DRAWN BY TITUS
CHECKED BY *Chickens* TRACED BY PEDRICK
APPROVAL *John C. Cawley*
SUPT. OF BUILDINGS
SUPT. OF SCHOOLS
CONTRACTORS



PREPARED IN THE OFFICE OF THE
SUFF. OF BUIL. 123
OF THE
BOARD OF PUBLIC EDUCATION
SCHOOL & LAND OF PHILA. PA.
1211 S. 3RD ST. PHILA. PA.

34.D.
LANSOWNE AVE. & KENMORE RD.
12
DRAWN BY *Wm. H. H. H.*
CHECKED BY *C. H. H.*
APPROVED BY *J. H. H.*
DATE *4/15/18*

NEW PUBLIC SCHOOL BUILDING
FOR THE
SCHOOL DISTRICT OF PHILADELPHIA
PENNSYLVANIA