

**THE SCHOOL DISTRICT OF PHILADELPHIA  
Office of Capital Programs  
440 North Broad Street, 3<sup>rd</sup> Floor – Suite 371  
Philadelphia, PA 19130**

TELEPHONE: (215) 400-4730

**Addendum No. 07**

**Subject:** Edward Gideon School  
SDP Contract No. B-055C OF 2018/19

**Location:** Edward Gideon School  
2817 West Glenwood Ave.  
Philadelphia, PA 19121

---

**This Addendum, dated January 21<sup>st</sup>, 2021 shall modify and become part of the Contract Documents for the work of this project. Any items not mentioned herein, or affected by, shall be performed strictly in accordance with the original documents.**

---

**Drawing Revisions:**

ESP1.0 Site Plan: Revised fence and gates.  
E2.3 Electrical Lighting Plan – Third Floor: Revised Gym lights and controls.  
E3.0 Electrical Power Plan – Basement: Revised switchboard MDS location.

---

**Specification Revisions:**

None.

---

**Bid RFIs:**

**Question #1:**

For the \$10k noted in "bid price line item for wall modifications for xfmr removal" note #2 on ED2.0 - does that cost include the new screened wall louver as noted in "PECO xfmr removal" note #6?

**Response:**

Yes, the cost noted in "BID PRICE LINE ITEM FOR WALL MODIFICATIONS FOR XFMR REMOVAL" Note #2 on Drawing ED2.0 includes the new screened wall louver as noted in "PECO XFMR REMOVAL" Note #6 on Drawing ED2.0.

Also, Drawing ED2.0 Note #2 of "BID PRICE LINE ITEM FOR WALL MODIFICATIONS FOR XFMR REMOVAL" shall be removed and replaced to read: "BID PRICE SHALL INCLUDE A \$30,000 LINE-ITEM ALLOWANCE FOR THE MATERIAL AND LABOR COSTS REQUIRED TO ENLARGE THE WALL

OPENING AND TO RESTORE IT, IF REQUIRED BY PECO FOR TRANSFORMER REMOVAL". Payment of this Allowance will be administered and paid for actual costs incurred in accordance with Section 01 1650 ALLOWANCES.

---

**Question #2:**

Per spec section 260533-3.1(B)(7) and spec section 262416-2.1(F)(1)(d), are any areas in the scope considered damp or wet?

**Response:**

Areas shall be considered Damp Locations, Wet Locations, and Dry Locations as defined in 2017 National Electric Code Article 100.

The written specifications are intended to provide guidance to address a sufficient range of possible project conditions. Written specifications shall be applied as required to meet project conditions. Conditions listed in the specifications that do not apply to actual site conditions are not required to be applied.

---

**Question #3:**

Per spec section 262416-2.1(F)(1)(e), are any areas considered subject to dust, falling dirt, and dripping noncorrosive liquids?

**Response:**

The written specifications are intended to provide guidance to address a sufficient range of possible project conditions. Written specifications shall be applied as required to meet project conditions. Conditions listed in the specifications that do not apply to actual site conditions are not required to be applied.

---

**Question #4:**

Per drawing FA1.0 general note 18, no mechanical schedules or drawings have been provided. Please confirm all of the required duct detectors are shown in the fire alarm drawings.

**Response:**

Existing conditions & equipment locations were documented to the extent possible prior to design, however it cannot be confirmed that all equipment requiring duct detectors is accounted for on plans; contractor shall verify & provide devices as required per contract documents.

---

**Question #5:**

Please provide the part number for the desired Pelco wall mount for the (2) 43" TVs. There are options such as flat wall mount, tilt wall mount, swing out arm wall mount, etc.

**Response:**

Unless otherwise directed by SDP, PELCO #PMCL643K 4K Ultra-High-Definition LED Monitor with flat wall mount bracket shall be provided.

---

**Question #6:**

Please confirm if each CCTV camera requires the Pelco 3 year 1-channel software upgrade plan for VideoXpert (#VXP-SUP-3Y)?

**Response:**

Yes, each CCTV camera requires the Pelco 3 year 1-channel software upgrade plan as part of the Base Bid.

---

**Question #7:**

Are we permitted to use Paige GameChanger cable #258300336 in lieu of fiber media converters for camera runs over 300ft?

**Response:**

POE extenders may be used for cameras with cable distances over 300'-0". NiTek or approved equal.

---

**Question #8:**

For the data and CCTV systems, most CAT6 cabling will have to be in conduit since most ceilings are exposed concrete. However, no conduit pathways design has been provided by the engineer of record. Can we provide trunk conduit runs sized per code in the corridors? Or will the engineer of record provide a conduit pathway design?

**Response:**

Conduit runs shall be sized per code, and identified on shop drawings indicating proposed pathway routing, elevations, etc.; these shall be produced by the EC and submitted for review & approval by SDP & the EEOR prior to construction.

---

**Question #9:**

For the data and CCTV systems, can data cabling be combined with CCTV cabling in the same conduits? Or should the cabling for these 2 systems be separated which would incur more costs?

**Response:**

No. SDP uses two separate departments to maintain these systems and requires data and CCTV system cabling to be routed in separate conduits.

---

**Question #10:**

"Bidding instructions - base bid" note #8 states to provide (2) of each lighting control device shown. Please confirm lighting contactors are not included in this note, as we believe that would be a waste of money.

**Response:**

Correct. Lighting contactors are not required to be included in Drawing E1.0 "BIDDING INSTRUCTIONS - BASE BID" Note #8.

---

**Question #11:**

Per general note 26 on FA1.0, there is no sprinkler vendor on this project. Can SDP clarify if there is an existing sprinkler system in the building? If yes, can SDP provide the location and quantity of tamper and flow switches?

**Response:**

Existing conditions & equipment locations were documented to the extent possible prior to design, and no sprinkler system devices were located; contractor shall verify & provide devices as required per contract documents.

---

**Question #12:**

There is a subscript "WP" next to the monitor module for the shunt trip device in the Pump Room 6H on FA2.0. We do not believe fire alarm manufacturers make waterproof monitor modules. Please confirm regular monitor modules are acceptable.

**Response:**

Standard monitoring modules are acceptable, however they shall be installed in appropriate size weatherproof backbox with gasketed seal; intent is not to make assembly waterproof to any IP-rating, but as a means of protecting the module from ingress to extent possible & practical with standard construction materials.

---

**Question #13:**

In lighting control details 2, 3, and 4 on E5.2, emergency control unit note #2 says "Upon loss of normal power or a signal from the fire alarm system, emergency lights shall illuminate to 100% brightness. Provide control wiring to fire alarm system." There are emergency lighting control units in the following rooms: crawl space, ash storage 9D, coal storage 8D, nurse 103, office 104, stage 119A, Auditorium 119, and recreation room 314. It is understood that all of the emergency lights in those rooms shall illuminate to 100% brightness upon loss of normal power. However, please confirm if all of these areas require an additional signal from the fire alarm system to bring lights to 100%. A signal from the fire alarm system would require a fire alarm control relay module at every emergency lighting control unit, but the fire alarm engineer has not shown control relay modules for these emergency control units on the fire alarm design drawings.

**Response:**

Drawing E5.2 clarification: Only Emergency lights in Stage 119A and Auditorium 119 are required to illuminate to 100% brightness upon receiving a signal from the fire alarm system.

---

**Question #14:**

In addendum 06, the response to question #25 about the asbestos abatement is "by SDP". Please confirm this means SDP is to provide the asbestos abatement, and that abatement is not in the electrical contractor's scope.

**Response:**

This is not correct. Addendum #06 Question #25 reads:

*Under specification section 011000, Summary of Work, it notes that the contractor is responsible for all environmental remediation using the services of a licensed and qualified abatement contractor. What environmental remediation is required? The documents are not specific with actual quantities and or areas requiring abatement. The specifications do state that ACM removal includes transite/ebonite electrical panels. Which existing panels contain ACM's? The specifications indicate the ACM removal is required for wire wrap insulation. Which existing feeders have ACM's? The specifications state that it is assumed that all painted surfaces throughout the building contains lead-based paint. Provide a detailed scope for any paint stabilization that may be required. Please verify that the scope of work is only as indicated under .07 on page 4 and 5 of the asbestos abatement, equipment demolition and lead based paint stabilization section.*

SDP provides the following response:

Contractor is responsible for all environmental remediation using the services of a licensed and qualified abatement contractor, as stated in Section 01 1000-tSummary of Work.

Scope of required asbestos abatement, including locations and estimated quantities (to be verified in the field by the bidder/contractor) is spelled out in the Section 01 1135 SPECIFICATION FOR ASBESTOS ABATEMENT, etc.

Given the age of the building and the existing feeders, bidders should assume that all existing feeders shown on the demolition drawings and riser diagrams to be removed and/or replaced have ACM wire wrap insulation.

The requirements for lead based paint stabilization in all rooms or spaces included in the scope of this project are specified in Section 01 1100 ENVIRONMENTAL COORDINATION: PART 4RENOVATION, REPAIR AND PAINTING-US EPA LEAD BASED PAINT RULE

---

**Question #15:**

For camera types A/B (see spec sections 282300-2.3A and 2.3B), Pelco does not make an INSIDE corner mount as shown on the security drawings in the stairwells. Pelco only makes an OUTSIDE corner mount for these cameras. Please clarify the mounting for the stairwell cameras and provide basis of design manufacturer and model numbers.

**Response:**

Mounting shown on plans is diagrammatic & shown for location/intent; per 282300-1.4(E), camera mounting details are part of the required CCTV shop drawing submittal.

---

**Question #16:**

For camera type D (see spec section 282300-2.14E), Pelco does not make a corner mount for this model as shown drawing SC2.1. Please the clarify mounting and provide basis of design manufacturer and model numbers.

**Response:**

Mounting shown on plans is diagrammatic & shown for location/intent; per 282300-1.4(E), camera mounting details are part of the required CCTV shop drawing submittal.

---

**Question #17:**

Is the “new fire alarm safety switch” (shown on drawing FA4.0) the same as non-fused safety switch “SS4” (shown on drawing E4.1)? If not, please provide amperage, quantity of poles, voltage, NEMA enclosure type, and whether it is fused or non-fused for the new fire alarm safety switch.

**Response:**

The “new fire alarm safety switch” (shown on drawing FA4.0) is not the same as non-fused safety switch “SS4” (shown on drawing E4.1). The fire alarm safety switch shall be a 30 Amp, 2-Pole, 600 Volt, Non-Fused, Lockable Disconnect Switch in a Nema 1 enclosure, equal to a Hubbell #HBL7832D.

---

**Question #18:**

Spec section 271513-5 lists all the manufactures approved for the Cat6 cable but does not have Commscope listed which is the school districts preference. If you look on page 271513-17 under the patch panel they list Systimax as the SD IT standard which is a Commscope solution. Please confirm Commscope as an acceptable manufacturer.

**Response:**

Commscope is an approved manufacturer.

---

**Question #19:**

Print E1.0 bid instructions note #10 calls for 55 additional cables in the base bid that only has 217 cables. This is going to drive the cost up significantly. Please confirm if additional (55) cables are required.

**Response:**

Drawing E1.0 dated June 26, 2020, “BIDDING INSTRUCTIONS – BASE BID” Note #10 includes an additional 20 (Twenty) CAT 6 cable runs to be provided, not 55.

---

**Question #20:**

Print E6.0 general note #4 calls for the contractor to provide and install the network switches for a full working system. There is no spec on the network switches and also this is never part of the construction package at the SD. The SD IT department supplies and installs all the network switches. Please confirm who will supply network switches, and supply Spec if it is the contractor.

**Response:**

Per SDP, the contractor shall furnish and install a complete Surveillance system, including the network switches. TRENDnet or approved equal.

---

**Question #21:**

Print E6.0 general note #6 calls for a 24-strand 50 Micron fiber from the existing data rack in the MDF to a potential wall rack within the same room. This is complete overkill and a \$30 patch cord is all that is needed. As part of the SD standards fiber from rack to rack within the same room is not required. Please confirm if required.

**Response:**

A patch cord is acceptable. Place Surveillance rack outside of IT Room. Assume 200'-0" distance for bidding and coordinate final location with the SDP Construction Manager.

---

SEAL:

NAME (LICENSED PROFESSIONAL): PETE BONNES DATE 09/30/2020  
STATE AND LICENSE NO.: PA 046114E



5 Christy Drive, Suite 307  
Chadds Ford, PA 19317  
610.558.3464 office  
www.fxbinco.com

Engineering Excellence Since 1968

- ### GENERAL NOTES
- ALL SHOWN IS NEW AND BY CONTRACTOR UNLESS NOTED OTHERWISE.
  - CONTRACTOR MUST CONFIRM ALL SITE AND UTILITY WORK WITH THE PHILADELPHIA SCHOOL DISTRICT'S DEPARTMENT OF CONSTRUCTION MANAGEMENT, THE LOCAL UTILITIES AND THE LOCAL MUNICIPALITY/TOWNSHIP.
  - ALL UNDERGROUND CONDUIT ROUTING AND EQUIPMENT LOCATIONS SHOWN ARE DIAGRAMMATIC. ALL LOCATIONS AND ROUTES MUST BE CONFIRMED AND COORDINATED WITH THE PHILADELPHIA SCHOOL DISTRICT'S DEPARTMENT OF CONSTRUCTION MANAGEMENT, THE LOCAL UTILITIES AND THE LOCAL MUNICIPALITY/TOWNSHIP.
  - SEE DRAWING ES.0 FOR SITE RELATED DETAILS AND DUCTBANK SECTIONS.
  - INDICATED WIRING IS DIAGRAMMATIC IN NATURE AND ONLY INTENDED TO CONVEY CIRCUITING INTENT.
  - PROVIDE UNDERGROUND UTILITY MARKOUT PRIOR TO COMMENCEMENT OF UNDERGROUND WORK.

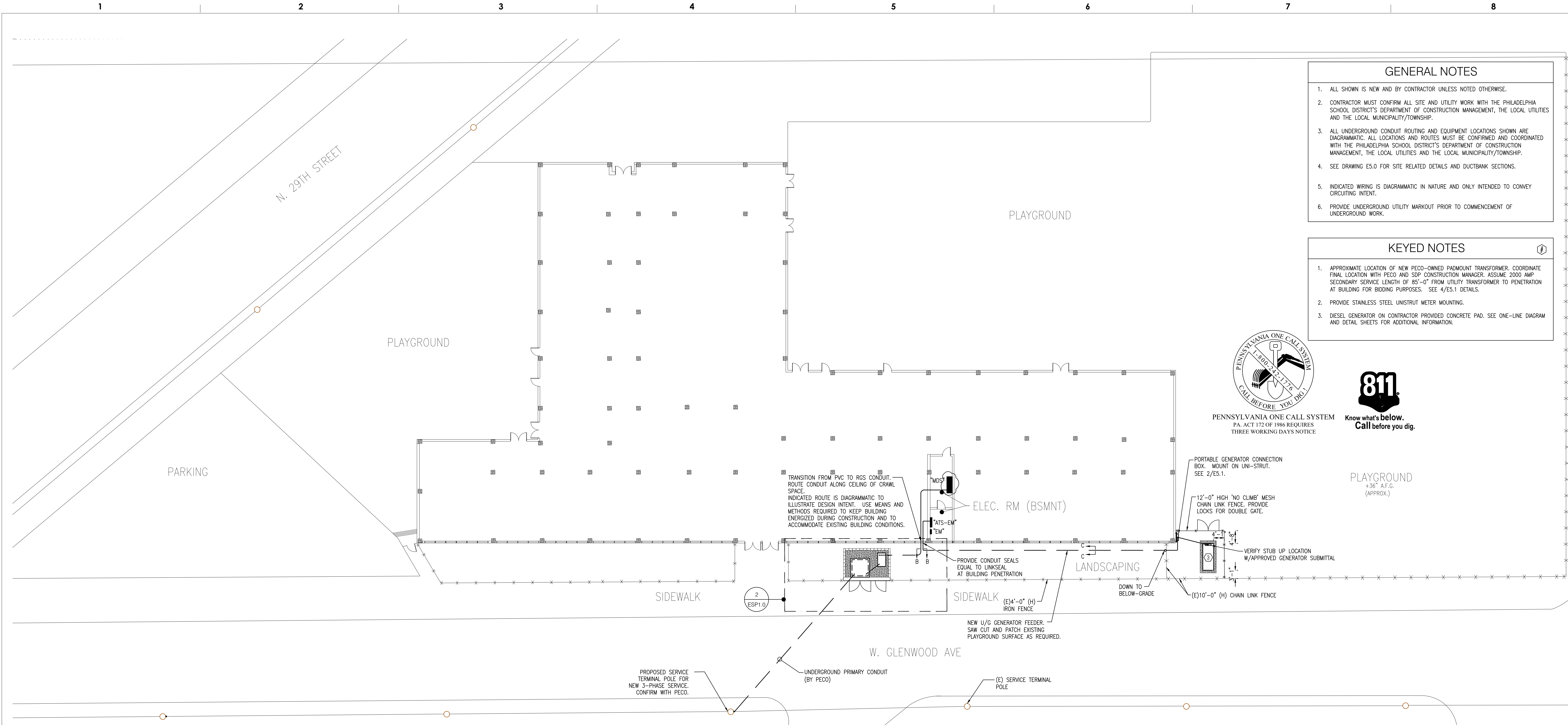
- ### KEYED NOTES
- APPROXIMATE LOCATION OF NEW PECO-OWNED PADMOUNT TRANSFORMER. COORDINATE FINAL LOCATION WITH PECO AND SDP CONSTRUCTION MANAGER. ASSUME 2000 AMP SECONDARY SERVICE LENGTH OF 85'-0" FROM UTILITY TRANSFORMER TO PENETRATION AT BUILDING FOR BIDDING PURPOSES. SEE 4/ES.1 DETAILS.
  - DIESEL GENERATOR ON CONTRACTOR PROVIDED CONCRETE PAD. SEE ONE-LINE DIAGRAM AND DETAIL SHEETS FOR ADDITIONAL INFORMATION.



PENNSYLVANIA ONE CALL SYSTEM  
PA. ACT 172 OF 1986 REQUIRES  
THREE WORKING DAYS NOTICE

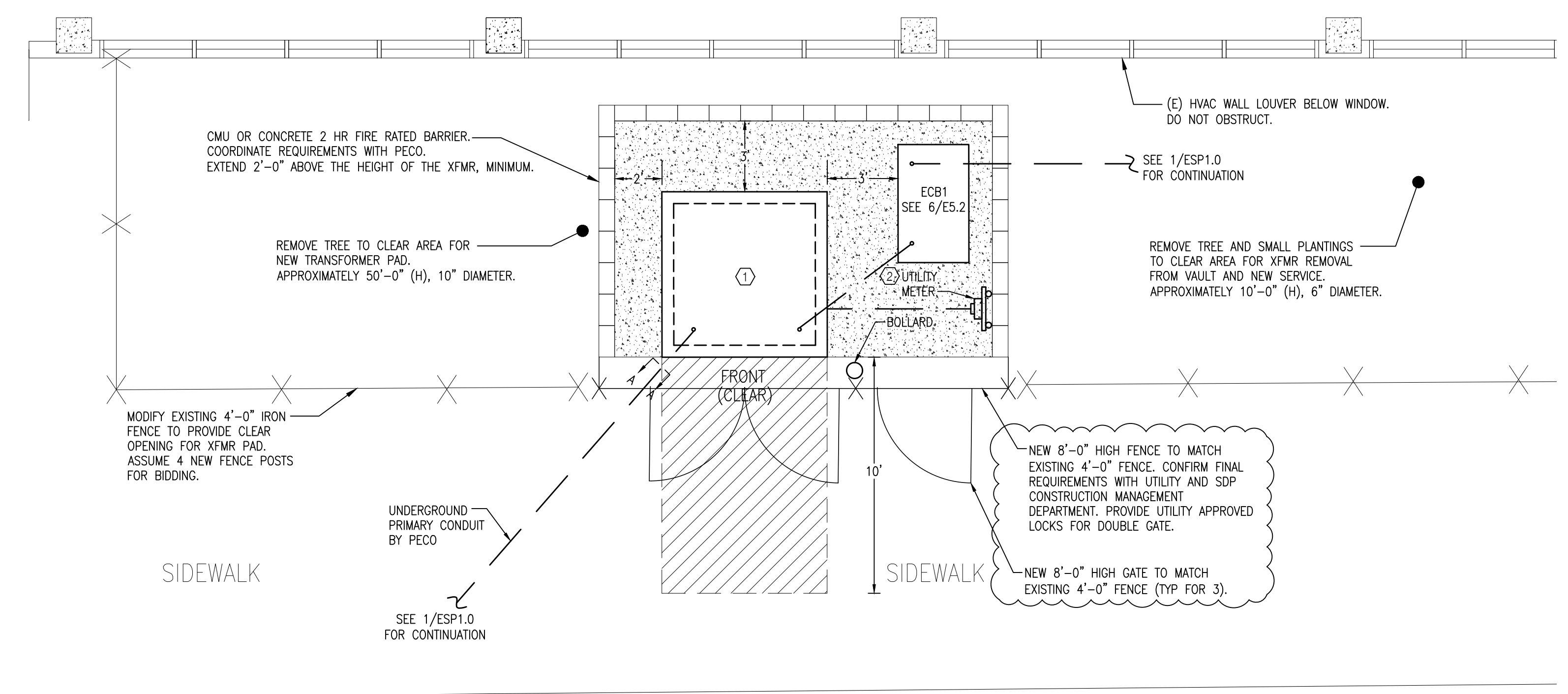


Know what's below.  
Call before you dig.



**1 ELECTRICAL SITE PLAN**  
ESP1.0 SCALE: 1/16"=1'-0"

- NOTES:
- ALL INDICATED IS NEW AND BY E.C., UNLESS NOTED OTHERWISE.



**2 ELECTRICAL ENLARGED TRANSFORMER & GENERATOR**  
ESP1.0 SCALE: 1/4"=1'-0"

CONTRACTS  
B045C DP 2018/19 (ELECTRICAL CONTRACTOR)

NO.	DATE	REVISION
2	01.20.21	ISSUE FOR ADDENDUM #07
1	01.08.21	ISSUE FOR ADDENDUM #06
0	04.24.20	ISSUE FOR BID
D	08.30.19	ISSUE FOR 100% REVIEW
C	04.28.19	ISSUE FOR 90% REVIEW
B	04.24.19	ISSUE FOR 60% REVIEW
A	02.22.19	ISSUE FOR 25% REVIEW

SCHOOL & LOCATION  
**EDWARD GIDEON SCHOOL**  
2817 WEST GLENWOOD AVE.  
PHILADELPHIA, PA 19121

PROJECT TITLE  
**ELECTRICAL UPGRADES**

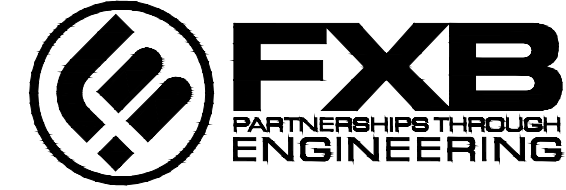
DRAWING TITLE  
**ELECTRICAL SITE PLAN**

DRAWN BY JMH	CHECKED BY PJB
DRAWING NO. <b>ESP1.0</b>	
SHEET 31 OF 45	



SEAL:

NAME (LICENSED PROFESSIONAL): PETE BONNES DATE 09/30/2020  
STATE AND LICENSE NO.: PA 046114E



5 Christy Drive, Suite 307  
Chadds Ford, PA 19317  
610.558.3464 office  
www.fxbinco.com

Engineering Excellence Since 1968

**LIGHTING GENERAL NOTES**

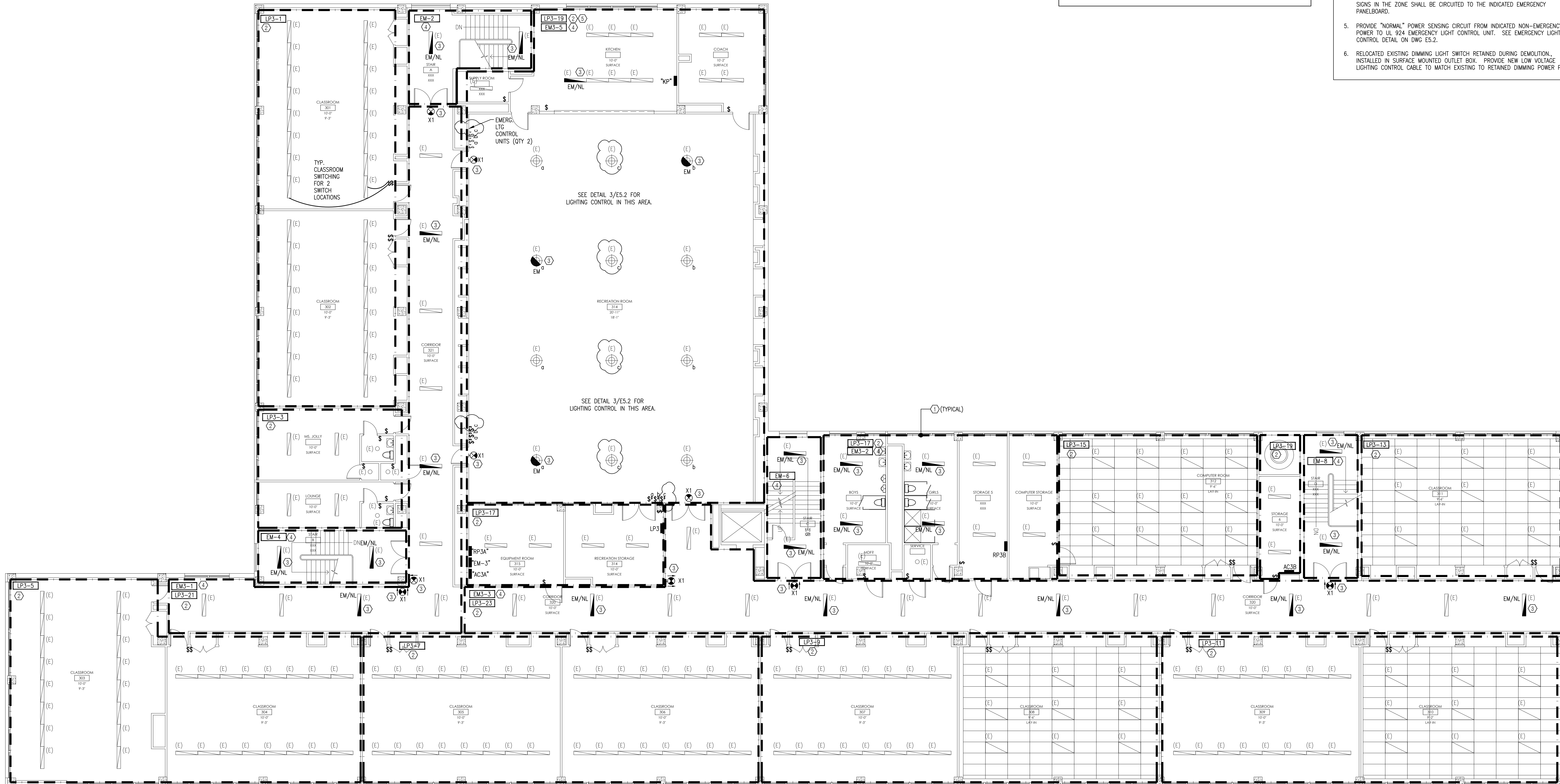
1. INDICATED WIRING IS DIAGRAMMATIC IN NATURE AND ONLY INTENDED TO CONVEY CIRCUITING INTENT.
2. ALL SHOWN IS NEW AND BY CONTRACTOR UNLESS NOTED OTHERWISE.
3. CONFIRM ALL LIGHT MOUNTING HEIGHTS AND EXISTING CONDITIONS PRIOR TO INSTALLATION.
4. NEC 110.26 REQUIRED CLEARANCES SHALL BE MAINTAINED FOR EXISTING AND NEW ELECTRICAL EQUIPMENT INSTALLED DURING CONSTRUCTION.

**LIGHTING KEYED NOTES**

1. LIGHTING CIRCUIT ZONE: ALL LIGHTS WITHIN ZONE SHALL BE CIRCUITED TO CIRCUIT(S) INDICATED UNLESS NOTED OTHERWISE. AREA LIGHTS SHALL BE CONTROLLED BY THE LIGHTING CONTROL SHOWN IN THAT AREA. ALL NIGHT LIGHTING AND EMERGENCY/EXIT LIGHTING SHALL BE WIRED AHEAD OF ALL LIGHTING CONTROLS.
2. LIGHTING ZONE NON-EMERGENCY CIRCUIT NUMBER: ALL NON-EMERGENCY LIGHTING IN THE ZONE SHALL BE CIRCUITED TO THE INDICATED NON-EMERGENCY PANELBOARD.
3. RE-CIRCUIT LIGHT INDICATED TO EMERGENCY PANEL.
4. LIGHTING ZONE EMERGENCY CIRCUIT NUMBER: ALL EMERGENCY LIGHTING AND EXIT SIGNS IN THE ZONE SHALL BE CIRCUITED TO THE INDICATED EMERGENCY PANELBOARD.
5. PROVIDE "NORMAL" POWER SENSING CIRCUIT FROM INDICATED NON-EMERGENCY POWER TO UL 924 EMERGENCY LIGHT CONTROL UNIT. SEE EMERGENCY LIGHTING CONTROL DETAIL ON DWG E5.2.
6. RELOCATED EXISTING DIMMING LIGHT SWITCH RETAINED DURING DEMOLITION. INSTALLED IN SURFACE MOUNTED OUTLET BOX. PROVIDE NEW LOW VOLTAGE LIGHTING CONTROL CABLE TO MATCH EXISTING TO RETAINED DIMMING POWER PACK.

**ROOM NAME LEGEND**

- ROOM NAME ——— INDICATES ROOM TYPE  
 \* "101" ——— 1 (FLOOR LEVEL) - 01 (ROOM NUMBER)  
 \*\* "X-XX" ——— INDICATES CEILING HEIGHT (FT.)  
 \*\*\* "X-XX" ——— INDICATES MOUNTING HEIGHT OF LIGHTING FIXTURES (FT.), U.O.N.
- \* ROOM NUMBERS ARE DIAGRAMMATIC AND ARE SHOWN FOR REFERENCE ONLY AND DESIGN INTENT. EXISTING ROOM #'S ARE TO BE VERIFIED IN FIELD.
- \*\* CONTRACTOR IS RESPONSIBLE FOR CONFIRMING ALL EXISTING CEILING HEIGHTS AND EXISTING CONDITIONS WHICH MAY AFFECT LIGHT INSTALLATION IN FIELD. LIGHT FIXTURE HEIGHTS ARE SHOWN FOR DESIGN INTENT AND MUST BE CONFIRMED WITH EXISTING CONDITIONS PRIOR TO INSTALLATION.



**1 ELECTRICAL LIGHTING PLAN - THIRD FLOOR**  
E2.3 SCALE: 1/8"=1'-0"

CONTRACTS  
8/04/SC OF 2018/19 (ELECTRICAL CONTRACTOR)

NO.	DATE	REVISION
2	01.20.21	ISSUE FOR ADDENDUM #07
1	01.08.21	ISSUE FOR ADDENDUM #06
0	04.24.20	ISSUE FOR BID
D	08.30.19	ISSUE FOR 100% REVIEW
C	04.28.19	ISSUE FOR 90% REVIEW
B	04.24.19	ISSUE FOR 60% REVIEW
A	02.22.19	ISSUE FOR 25% REVIEW

**SCHOOL & LOCATION**

**EDWARD GIDEON SCHOOL**  
2817 WEST GLENWOOD AVE.  
PHILADELPHIA, PA 19121

**PROJECT TITLE**

**ELECTRICAL UPGRADES**

**DRAWING TITLE**

**ELECTRICAL LIGHTING PLAN  
THIRD FLOOR**

DRAWN BY: JMH CHECKED BY: PJB

DRAWING NO. **E2.3**

SEAL:

NAME (LICENSED PROFESSIONAL): PETE BONNES DATE 09/30/2020  
STATE AND LICENSE NO.: PA 046114E



5 Christy Drive, Suite 307  
Chadds Ford, PA 19317  
610.558.3464 office  
www.fxbinco.com

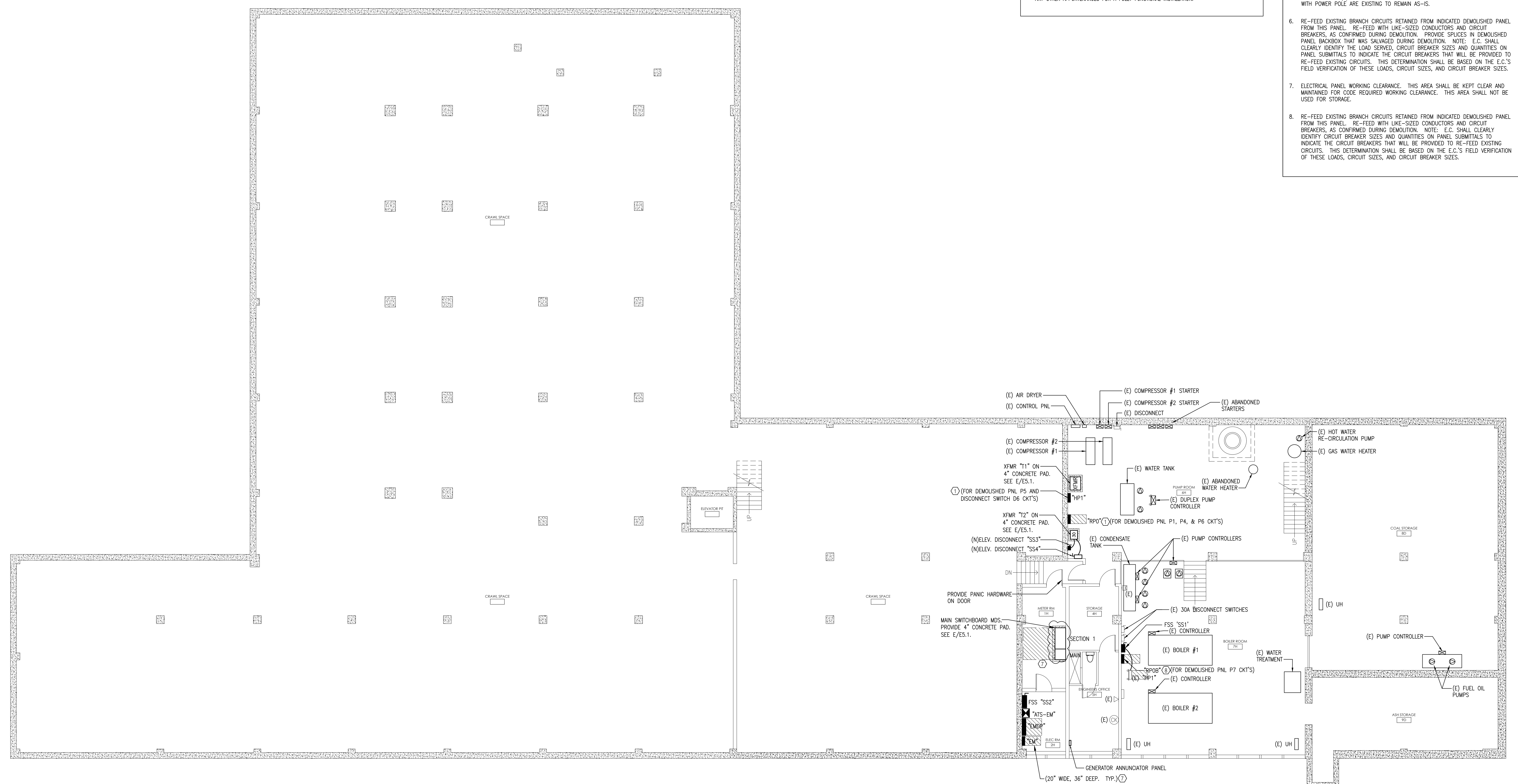
Engineering Excellence Since 1968

ROOM NAME LEGEND	
ROOM NAME	INDICATES ROOM TYPE
"101"	1 (FLOOR LEVEL) - 01 (ROOM NUMBER)

\* ROOM NUMBERS ARE DIAGRAMMATIC AND ARE SHOWN FOR REFERENCE ONLY AND DESIGN INTENT. EXISTING ROOM #'S ARE TO BE VERIFIED IN FIELD.

- ### POWER GENERAL NOTES
- ALL SHOWN IS NEW AND BY CONTRACTOR UNLESS NOTED OTHERWISE.
  - INDICATED WIRING IS DIAGRAMMATIC IN NATURE AND ONLY INTENDED TO CONVEY CIRCUITING INTENT.
  - COORDINATE CONDUIT ROUTING WITH EXISTING DUCTWORK, PIPING, STRUCTURAL COMPONENTS, FIRE ALARM COMPONENTS, TELE/DATA EQUIPMENT, AND SIMILAR BUILDING SYSTEMS. THIS INCLUDES THE FOLLOWING, AS REQUIRED TO PERFORM THE INDICATED WORK:
    - RELOCATION OR TEMPORARY REMOVAL AND REINSTALLATION OF THESE BUILDING SYSTEMS.
    - ROUTING CONDUIT, CIRCUITS, AND FEEDERS AROUND THESE BUILDING SYSTEMS.
  - CONFIRM EQUIPMENT POWER REQUIREMENTS WITH EQUIPMENT NAMEPLATES AND/OR APPROVED EQUIPMENT SUBMITTALS PRIOR TO CONSTRUCTION.
  - CONFIRM ALL DEVICE MOUNTING HEIGHTS AND EXISTING CONDITIONS PRIOR TO INSTALLATION.
  - NEC 110.26 REQUIRED CLEARANCES SHALL BE MAINTAINED FOR EXISTING AND NEW ELECTRICAL EQUIPMENT INSTALLED DURING CONSTRUCTION.
  - NEW RECEPTACLES SHALL BE SURFACE MOUNTED AND FED BY SURFACE MOUNTED BRANCH CIRCUITS IN CONDUIT. PROVIDE ALL NECESSARY HARDWARE, BACK BOXES, FACEPLATES AND ANY OTHER APPURTENANCES FOR A FULLY FUNCTIONAL INSTALLATION.

- ### POWER KEYED NOTES
- RE-FEED EXISTING BRANCH CIRCUITS RETAINED FROM INDICATED DEMOLISHED PANEL FROM THIS PANEL. INTERCEPT RETAINED BRANCH CIRCUITS AND ROUTE INTO NEW SPLICE ENCLOSURE IN AREA OF DEMOLISHED PANELBOARD LOCATION. RE-FEED FROM THIS PANEL WITH LIKE-SIZED CONDUCTORS AND CIRCUIT BREAKERS, AS CONFIRMED DURING DEMOLITION. PROVIDE SPLICES IN SPLICE ENCLOSURE. NOTE: E.C. SHALL CLEARLY IDENTIFY LOAD SERVED, CIRCUIT BREAKER SIZES, AND QUANTITIES ON PANEL SUBMITTALS TO INDICATE THE CIRCUIT BREAKERS THAT WILL BE PROVIDED TO RE-FEED EXISTING CIRCUITS. THIS DETERMINATION SHALL BE BASED ON THE E.C.'S FIELD VERIFICATION OF THESE LOADS, CIRCUIT SIZES, AND CIRCUIT BREAKER SIZES.
  - FIELD COORDINATE DEVICE LOCATION AND MOUNTING HEIGHT.
  - NEW SURFACE MOUNTED SWITCH AND RECEPTACLE FOR WINDOW AC UNIT. NEW RECEPTACLE INSTALLED DURING CONSTRUCTION MUST MATCH EXISTING REMOVED DURING DEMOLITION. CONTRACTOR MUST CONFIRM NEMA CONFIGURATION OF RECEPTACLE PRIOR TO PURCHASE AND INSTALLATION. MOUNT SWITCH AT SAME HEIGHT AS EXISTING SWITCH REMOVED DURING DEMOLITION.
  - NEW CEILING MOUNTED RECEPTACLE. NEW RECEPTACLE INSTALLED DURING CONSTRUCTION MUST MATCH EXISTING REMOVED DURING DEMOLITION. CONTRACTOR MUST CONFIRM NEMA CONFIGURATION OF RECEPTACLE PRIOR TO PURCHASE AND INSTALLATION.
  - EXISTING POWER POLE KEPT SAFE DURING DEMOLITION. ALL RECEPTACLES IN POWER POLE ARE EXISTING KEPT SAFE FROM DEMOLITION AND SHALL BE RE-FEED BY NEW BRANCH CIRCUIT(S) INDICATED. ALL DATA DEVICES AND DATA CABLING ASSOCIATED WITH POWER POLE ARE EXISTING TO REMAIN AS-IS.
  - RE-FEED EXISTING BRANCH CIRCUITS RETAINED FROM INDICATED DEMOLISHED PANEL FROM THIS PANEL. RE-FEED WITH LIKE-SIZED CONDUCTORS AND CIRCUIT BREAKERS, AS CONFIRMED DURING DEMOLITION. PROVIDE SPLICES IN DEMOLISHED PANEL BACKBOX THAT WAS SALVAGED DURING DEMOLITION. NOTE: E.C. SHALL CLEARLY IDENTIFY THE LOAD SERVED, CIRCUIT BREAKER SIZES AND QUANTITIES ON PANEL SUBMITTALS TO INDICATE THE CIRCUIT BREAKERS THAT WILL BE PROVIDED TO RE-FEED EXISTING CIRCUITS. THIS DETERMINATION SHALL BE BASED ON THE E.C.'S FIELD VERIFICATION OF THESE LOADS, CIRCUIT SIZES, AND CIRCUIT BREAKER SIZES.
  - ELECTRICAL PANEL WORKING CLEARANCE. THIS AREA SHALL BE KEPT CLEAR AND MAINTAINED FOR CODE REQUIRED WORKING CLEARANCE. THIS AREA SHALL NOT BE USED FOR STORAGE.
  - RE-FEED EXISTING BRANCH CIRCUITS RETAINED FROM INDICATED DEMOLISHED PANEL FROM THIS PANEL. RE-FEED WITH LIKE-SIZED CONDUCTORS AND CIRCUIT BREAKERS, AS CONFIRMED DURING DEMOLITION. NOTE: E.C. SHALL CLEARLY IDENTIFY CIRCUIT BREAKER SIZES AND QUANTITIES ON PANEL SUBMITTALS TO INDICATE THE CIRCUIT BREAKERS THAT WILL BE PROVIDED TO RE-FEED EXISTING CIRCUITS. THIS DETERMINATION SHALL BE BASED ON THE E.C.'S FIELD VERIFICATION OF THESE LOADS, CIRCUIT SIZES, AND CIRCUIT BREAKER SIZES.



1 ELECTRICAL POWER PLAN - BASEMENT  
E3.0 SCALE: 1/8"=1'-0"

CONTRACTS  
8/04/SC/CP/2018/19 (ELECTRICAL CONTRACTOR)

NO.	DATE	REVISION
2	01.20.21	ISSUE FOR ADDENDUM #07
1	01.08.21	ISSUE FOR ADDENDUM #06
0	04.24.20	ISSUE FOR BID
D	08.30.19	ISSUE FOR 100% REVIEW
C	04.28.19	ISSUE FOR 90% REVIEW
B	04.24.19	ISSUE FOR 40% REVIEW
A	02.22.19	ISSUE FOR 25% REVIEW

SCHOOL & LOCATION  
**EDWARD GIDEON SCHOOL**  
2817 WEST GLENWOOD AVE.  
PHILADELPHIA, PA 19121

PROJECT TITLE  
**ELECTRICAL UPGRADES**

DRAWING TITLE  
ELECTRICAL POWER PLAN  
BASEMENT

DRAWN BY JMH	CHECKED BY PJB
DRAWING NO. <b>E3.0</b>	
SHEET 16 OF 45	