

THE SCHOOL DISTRICT OF PHILADELPHIA  
Office of Capital Programs  
440 North Broad Street, 3<sup>rd</sup> Floor – Suite 371  
Philadelphia, PA 19130

TELEPHONE: (215) 400-4730

**Addendum No. 2**

**Subject:** Science Leadership Academy at Beeber – Science Lab Renovations  
SDP Contract Nos. B-050c, B-051c, B-052c and B-053c of 2020/21

**Location:** Science Leadership Academy at Beeber  
5925 Malvern Avenue  
Philadelphia, Pennsylvania 19131

---

**This Addendum, dated May 3, 2021, shall modify and become part of the Contract Documents for the work of this project. Any items not mentioned herein, or affected by, shall be performed strictly in accordance with the original documents.**

---

The following items, clarifications and/or revisions are to be included in the Contract Documents:

**NOTICE OF MODIFICATIONS:**

**1. SUPPLEMENTARY CONDITIONS, SC-18 HOURS OF WORK**

DELETE the first sentence of 18.1 and REPLACE with the following:

**“ALL WORK SHALL BE PERFORMED ON THE SECOND SHIFT.”**

**2. SECTION 01 1000 SUMMARY OF WORK:**

ADD the following to B.2. IN PARAGRAPH 1.4 CONTRACTOR USE OF SITE AND PREMISES

**“ALSO, A GESA PROJECT FOR THIS SCHOOL MAY BE UNDERWAY CONCURRENTLY WITH THIS PROJECT AND REQUIRE COORDINATION OF ALL THREE CONCURRENT PROJECTS TO AVOID OR MINIMIZE DISRUPTIONS TO OWNER OCCUPANCY.”**

**3. REVISED DRAWING E-101 supersedes the same drawing attached to Addendum 01.**

ATTACHMENTS:

Revised Drawing E101

**End of Addendum 2**



7	8
<b>VERIFY SCALE</b>	<b>PLAN NORTH</b>
<p>DATA IS ONE (1) INCH LONG ON ORIGINAL DRAWING.</p> <p>IF BAR IS NOT ONE (1) INCH LONG, ADJUST SCALE ACCORDINGLY.</p> <p>NO VARIANCE FROM CONTRACT NOT PERMITTED WITHOUT BUREAU OF ENGINEERING AND ARCHITECTURE APPROVAL.</p>	

**GENERAL RENOVATION NOTES**

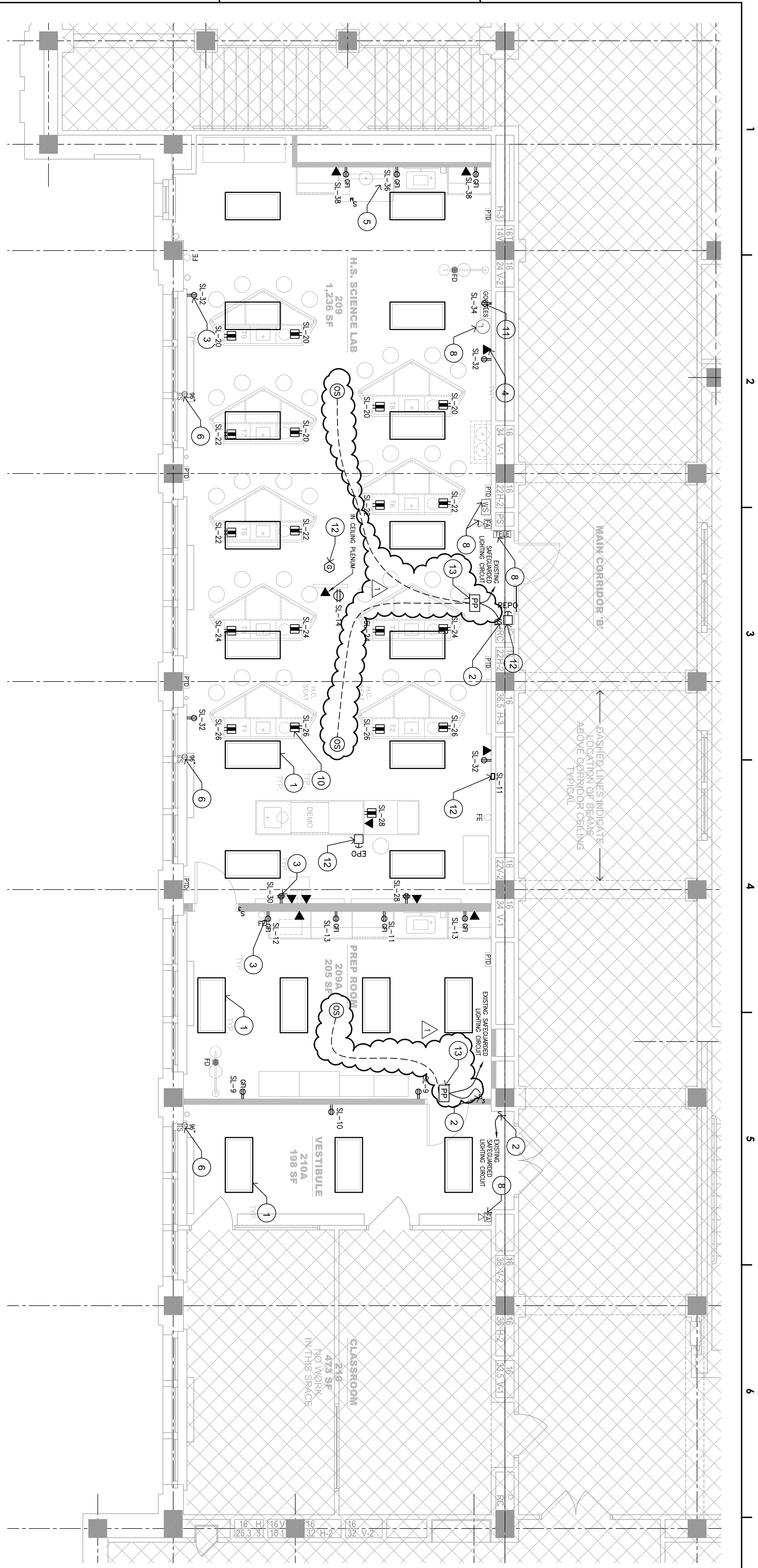
- REFER TO DRAWING E100 FOR SYMBOLS AND ABBREVIATIONS.
- REFER TO DRAWING E701 FOR PANEL SCHEDULES.
- FINAL LOCATIONS OF ALL NEW DEVICES SHALL BE COORDINATED WITH ARCHITECTURAL DRAWINGS.
- COLORS AND FINISHES OF DEVICES SHALL BE COORDINATED WITH ARCHITECT.
- REFER TO ARCHITECTURAL NEW WORK DRAWINGS FOR THE EXACT PHASING & SCOPE OF WORK. PRIORITY TO START. COORDINATE SCOPE OF WORK WITH ARCHITECT AND OWNER.
- ARCHITECT AND OWNER SHALL REPRESENT EXISTING TO REMAIN ITEMS AS ITEMS SHOWN DARK AND SOLID ON PLANS SHALL REPRESENT NEW WORK ITEMS.
- ELECTRICAL CONTRACTOR SHALL REFERENCE ARCHITECTURAL DRAWING A011 FOR KEY PLAN AND LOCATIONS OF EXISTING MDP AND DATA BACK.
- ELECTRICAL CONTRACTOR SHALL BE RESPONSIBLE FOR CUTTING AND REPAIRING ALL BACKBOX AND CONDUIT PENETRATIONS THROUGH FLOORS, WALLS AND CEILING/ROOFS.

**RENOVATION KEY NOTES**

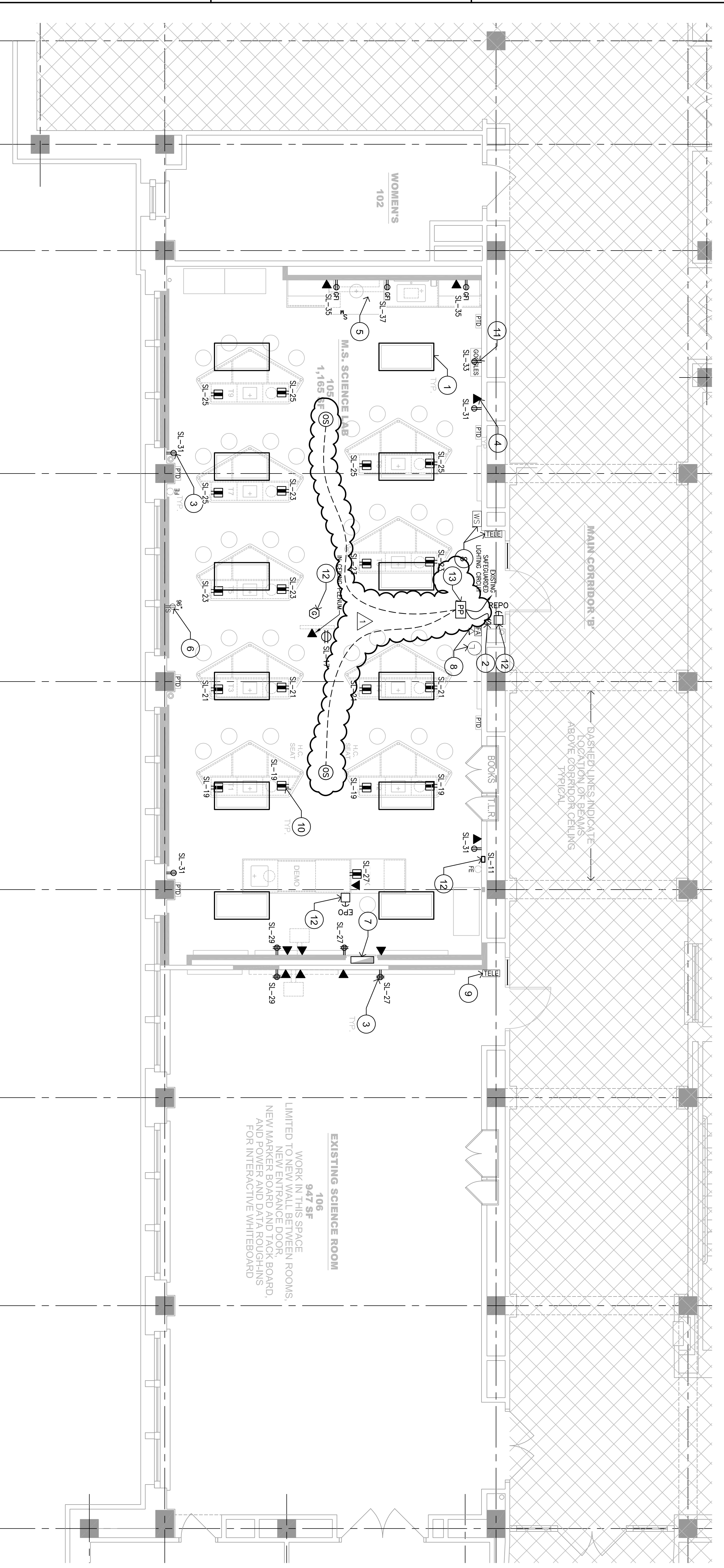
- KEY NOTES BELOW REFER TO WORK INCLUDED IN THE SCOPE OF WORK FOR THE ELECTRICAL CONTRACTOR (E.C.).
- PROVIDE NEW LIGHT FIXTURES, CEILING AND EXISTING SAFETY/EMERGENCY LIGHTING AND CONTROLS FOR POWER TO LIGHT FIXTURE.**  
BASIS OF DESIGN: LITHONIX CPY-2X4-4000LM-58K-W-42.
  - FURNISH AND INSTALL NEW 0-10V DIMMING LIGHT SWITCHES AND MATCHING COVER PLATES. COLOR SHALL BE AS COORDINATED WITH ARCHITECT. REUSE AND EXTEND EXISTING SAFETY/EMERGENCY LIGHTING CIRCUITS FOR POWER TO BASIS OF DESIGN: WATTS/OPER MODEL #RH4BLP3TC.
  - ALL RECESSED SURFACE MOUNTED RECEPTACLES SHALL BE INSTALLED USING SURFACE MOUNTED RECEPTACLE (EMERGENCY) WITH ALL FACEWAYS DOWN IN CORNERS OF ROOM AND THEN HORIZONTALLY TO DEVICE LOCATIONS.**  
DATA PORT INSTALLATION:  
A. USING SURFACE MOUNTED RECEPTACLE WHERE MOUNTED/RUN ALL FACEWAYS DOWN IN CORNERS OF ROOM AND THEN HORIZONTALLY TO DEVICE LOCATIONS.  
B. RUN ALL FACEWAYS DOWN IN CORNERS OF ROOM AND THEN HORIZONTALLY TO DEVICE LOCATIONS.  
C. E.C. SHALL REFER TO ARCHITECTURAL DRAWING A011 FOR INTENDED ROUTING OF ALL DATA CABLING RUNS BACK TO EXISTING SWITCH ROOMS AND DATA RACKS. ALL DATA CABLING SHALL BE GENERATED BY DATA PROVIDER NEW WORK. CONTRACTOR SHALL NOT BE RESPONSIBLE FOR PROVIDING NEW WORK DATA CONNECTIONS TO EXISTING RACK IN IDF ROOM.

- COORDINATE GFCI RECEPTACLE AND HOOD FAN SWITCH LOCATIONS WITH HOOD INSTALLATION AND GENERAL CONTRACTOR. PROVIDE (2) #12 AWG COPPER AND (1) #12 AWG COPPER GROUND CONTROL WIRING FROM HOOD-MOUNTED FAN TOGGLE SWITCH AND MOTOR STARTER SERVING CORRESPONDING EXHAUST FAN ON ROOF. E.C. SHALL UTILIZE ROOF CURBS CONNECTIONS TO MECHANICAL EQUIPMENT. E.C. SHALL COORDINATE ALL WORK WITH MECHANICAL CONTRACTOR IN FIELD.
- EXISTING NEMA 5-20R RECEPTACLE WITH SINGLE-POLE SWITCH FOR EXISTING WINDOW AIR CONDITIONING UNIT TO REMAIN.
- EXISTING SURFACE MOUNTED BRANCH CIRCUIT PANEL TO REMAIN. NEW WALL PANEL LOCATION IN WALL WITH G.C. IN FIELD. E.C. SHALL COORDINATE ALL NEW CONDUIT RUNS IN FIELD.
- EXISTING TO REMAIN.
- RELOCATE EXISTING HOUSE PHONE AND BOX TO NEW PARTITION. PROVIDE POWER CONNECTIONS. FED FROM BELOW FLOOR. TO RECEPTACLE INCLUDED WITH LAB CASEWORK.
- POWER FOR GOOGLE'S CABINET.

- E.C. SHALL FURNISH AND INSTALL A 20A, 120VAC BRANCH CIRCUIT AS SHOWN ON PLANS TO EACH 'S' SERIES ELECTRIC GAS VALVE ENCLOSURE. E.C. SHALL FURNISH AND INSTALL #18 AWG CU, SHIELDED PLENUM RATED WIRING FOR ALL LOW-VOLTAGE CONNECTIONS FROM EACH 'S' SERIES ENCLOSURE TO UTILITY REMOTE FIBER OPTIC TERMINATION LOCATED IN EACH CLASSROOMS, ENTRANCE/EXIT, AND TO FUEL GAS SENSOR MOUNTED TO EACH CLASSROOMS CEILING. E.C. SHALL PROVIDE ALL WIRING IN ACCORDANCE WITH MANUFACTURER'S WRITTEN INSTALLATION INSTRUCTIONS. E.C. SHALL MANUFACTURER'S WRITTEN INSTALLATION INSTRUCTIONS. E.C. SHALL DRAWINGS AND INSTALLED LOCATIONS. IN FIELD.
- E.C. SHALL FURNISH AND INSTALL POWER PACKS AND OCCUPANCY SENSORS AS SHOWN ON PLANS. SENSORS SHALL BE INSTALLED IN EACH CLASSROOM TO MONITOR OCCUPANCY AND LIGHT SENSORS SHALL BE INSTALLED IN EACH CLASSROOM TO MONITOR LIGHT LEVELS. SENSORS SHALL BE INSTALLED IN EACH CLASSROOM TO MONITOR OCCUPANCY AND POWER PACK. E.C. SHALL INSTALL ALL WIRING BETWEEN OCCUPANCY SENSORS AND POWER PACK. E.C. SHALL COORDINATE ALL LOCATIONS OF POWER PACKS IN FIELD WITH ARCHITECT. E.C. SHALL COORDINATE ALL LOCATIONS OF POWER PACKS IN FIELD WITH ARCHITECT AS COORDINATED WITH ARCHITECT.
- E.C. SHALL COORDINATE ALL LOCATIONS OF POWER PACKS IN FIELD WITH ARCHITECT. E.C. SHALL COORDINATE ALL LOCATIONS OF POWER PACKS IN FIELD WITH ARCHITECT AS COORDINATED WITH ARCHITECT.



SCALE 1/4" = 1'-0"  
PARTIAL SECOND FLOOR PLAN - HIGH SCHOOL SCIENCE LAB CLASSROOM - RENOVATION PLAN  
02



SCALE 1/4" = 1'-0"  
PARTIAL FIRST FLOOR PLAN - MIDDLE SCHOOL SCIENCE LAB CLASSROOM - RENOVATION PLAN  
01

NO.	DATE	REVISION
01	01-23-2021	ADDENDUM NO. 1
02		
03		
04		
05		
06		
07		
08		
09		
10		

LOCATION/NO.	FILE NO.
Z680	
DRAWN BY	CHECKED BY
SAF	

G.C.: B-050 OF 2020/21  
M.C.: B-051 OF 2020/21  
E.C.: B-053 OF 2020/21

DRAWING NUMBER  
E101