

THE SCHOOL DISTRICT OF PHILADELPHIA
Office of Capital Programs
440 North Broad Street, 3rd. Floor – Suite 371
Philadelphia, PA 19130

TELEPHONE: (215) 400-4730

ADDENDUM No. 02

Subject: Feltonville Intermediate
Fire Alarm System Replacement
SDP Contract No. B-016c of 2020/2021

Location: Feltonville Intermediate
238 East Wyoming Ave.
Philadelphia PA 19120

This Addendum dated October 06, 2021 shall modify and become part of the Contract Documents for the work of this project. Any items not mentioned herein, or affected by, shall be performed strictly in accordance with the original documents.

Question #1: Is an annunciator required in the Main Office, Room001?

Response: Provide an annunciator in the Main Office and the Fire department entrance. Refer to attached revised Sheet E-104. Coordinate final locations with SDP project manager.

Question #2: On the site visit, we observed that the location where the new FACP is to be installed is not actually available, as there is other equipment located in that area. Please indicate in plan another location where the new FACP can be installed.

Response: New FACP to be installed on the south wall of the building engineer's office adjacent to the existing 25kva transformer. Field determine FACP final location with SDP construction manager.

Question #3: There is only (1) new power circuit shown in the panel schedule for H-1-B. Please confirm the FACP and all the NAC panels are fed from this same circuit. If additional circuits are required, please indicate where to feed them from.

Response: All panels are to be connected from same circuit as indicated.

Question #4: General sheet note D on E-104 states to paint all fire alarm conduit red. Please confirm painted red conduit is not required.

Response: Per SDP, painted red conduit is NOT required.

Question #5: Keyed note 2 on drawing E-101 states that we are to disconnect and then reconnect the existing tamper and flow switches in room 123D to the new fire alarm system. However, on the site visit, it did not appear that the existing tamper and flow switches in room 123D were electronic, nor did it appear that they have existing wiring to them. Please clarify how to proceed. If new tamper and flow switches are to be provided, please indicate the pipe sizes.

Response: No new tamper and/or flow switches are needed. Existing conditions are in compliance with NFPA 13-2013 8.16.1.1.2 Supervision.

End of Addendum

SEAL:

BRIAN A. SEIP (LICENSED PROFESSIONAL)
STATE AND LICENSE NO. PA # PE60299

ENGINEER OF RECORD

GANNETT FLEMING, INC.
1010 Adams Avenue
Valley Forge, PA 19403
Phone: 610.650.8150
Fax: 610.650.8190
Email: bweisser@ghet.com
Attr: Brian M. Weisser, P.E.

60% DESIGN SUBMISSION
NOVEMBER 30, 2020

10	
9	
8	
7	
6	
5	
4	
3	
2	
1	10.06.21 ADDENDUM #2
NO.	DATE REVISION

SCHOOL & LOCATION
FELTONVILLE INTERMEDIATE
238 EAST WYOMING AVENUE
PHILADELPHIA, PA 19120

PROJECT TITLE

FIRE ALARM SYSTEM REPLACEMENT

DRAWING TITLE

FIRE ALARM FIRST FLOOR NEW WORK PLAN

DRAWING SCALE AS NOTED	
LOCATION NO. 7310	ENGINEER'S PROJ. NO. 063694.016
DRAWN BY BAM	CHECKED BY C/JG

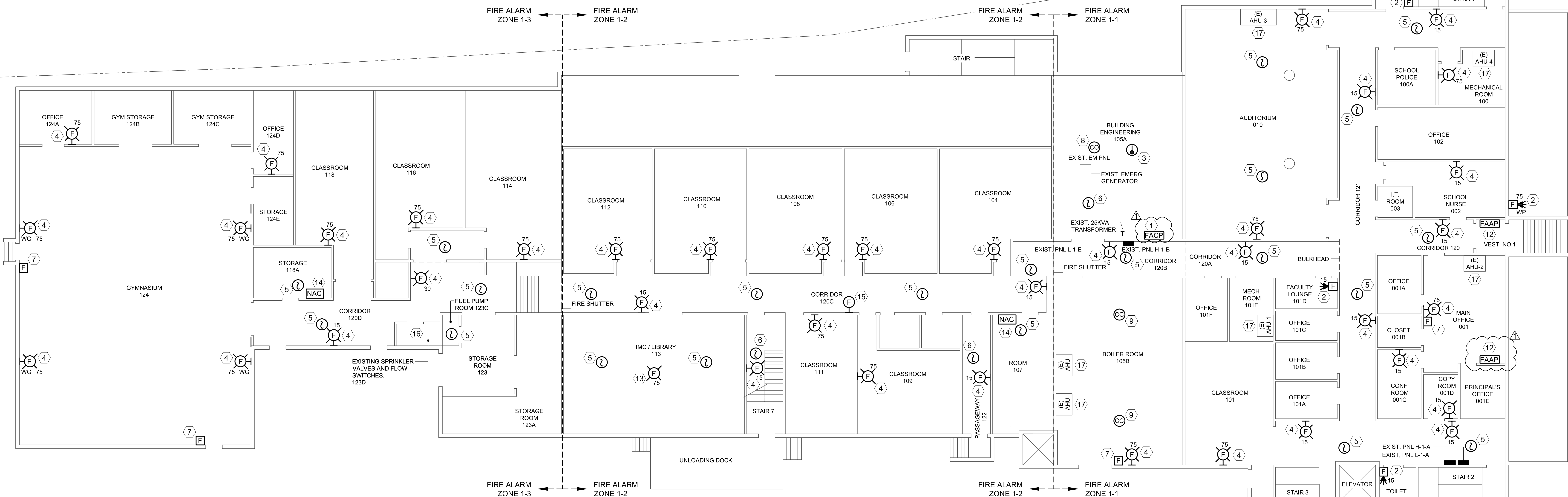
DRAWING NO.
E-104
SHEET 6 OF 10

GENERAL SHEET NOTES

- A. FOR SYMBOLS AND GENERAL NOTES, REFER TO DRAWING E-001.
- B. REMOVE AND REINSTALL CEILING TILES AND GRID, AS NECESSARY FOR DEMOLITION AND NEW WORK. PROVIDE 500 LINEAL FEET OF "REPLACEMENT-IN-KIND" CEILING GRID AND 100 "REPLACEMENT-IN-KIND" CEILING TILES, AS DIRECTED BY THE SDP CONSTRUCTION MANAGER.
- C. DO NOT CUT ANY WALLS, FLOORS, OR CEILINGS WITHOUT PERMISSION FROM THE SDP CONSTRUCTION MANAGER.
- D. LABEL ALL NEW CONDUIT, WIRING, AND FIRE ALARM PANELS AND DEVICES. ALL CONTROL WIRING SHALL BE LABELED AT EACH TERMINATION. PAINT ALL FIRE ALARM CONDUIT RED.
- E. PROVIDE A SIGN FOR, AND IMMEDIATELY ADJACENT TO, EACH MANUAL PULL STATION. THE SIGN SHALL READ, "IN CASE OF FIRE: SOUND THE ALARM AND CALL THE FIRE DEPARTMENT".

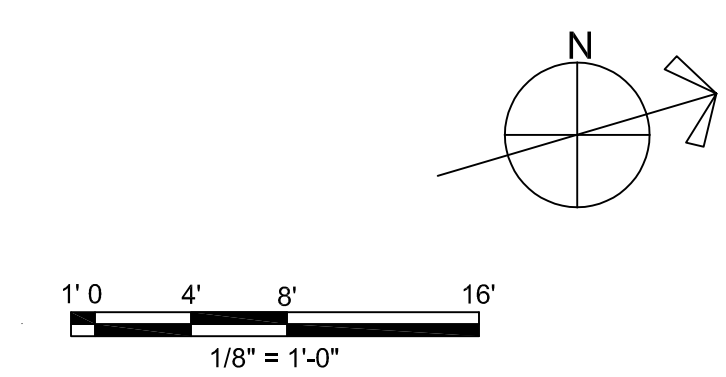
SHEET KEYED NOTES

- 1. PROVIDE SURFACE WALL-MOUNTED FIRE ALARM CONTROL PANEL (FACP). COORDINATE EXACT LOCATION WITH FIRE MARSHALL PRIOR TO ROUGH-IN.
- 2. PROVIDE SURFACE WALL-MOUNTED FIRE ALARM STROBE DEVICE.
- 3. PROVIDE SURFACE CEILING-MOUNTED HEAT DETECTOR; TYPE AS INDICATED.
- 4. PROVIDE SURFACE WALL-MOUNTED FIRE ALARM SPEAKER / STROBE DEVICE.
- 5. PROVIDE FLUSH CEILING-MOUNTED SMOKE DETECTOR, WITH BACK BOX RECESSED IN CEILING.
- 6. PROVIDE SURFACE CEILING-MOUNTED SMOKE DETECTOR.
- 7. PROVIDE SURFACE WALL-MOUNTED MANUAL PULL STATION (COORDINATE EXACT LOCATION WITH OWNER PRIOR TO ROUGH-IN). PROVIDE CLEAR PROTECTIVE POLYCARBONATE COVER WITH INTEGRAL HORN THAT ACTIVATES WHEN COVER IS OPENED.
- 8. PROVIDE SURFACE CEILING-MOUNTED CARBON MONOXIDE DETECTOR.
- 9. PROVIDE SURFACE CEILING-MOUNTED COMBINATION CARBON MONOXIDE / SMOKE DETECTOR.
- 10. NOTE NOT USED.
- 11. NOTE NOT USED.
- 12. PROVIDE SURFACE WALL-MOUNTED REMOTE FIRE ALARM ANNUNCIATOR PANEL (FAAP). COORDINATE EXACT LOCATION WITH FIRE MARSHALL PRIOR TO ROUGH-IN.
- 13. PROVIDE FLUSH CEILING-MOUNTED FIRE ALARM SPEAKER / STROBE, WITH BACK BOX RECESSED IN CEILING.
- 14. PROVIDE A SURFACE WALL-MOUNTED REMOTE POWER SUPPLY / NOTIFICATION APPLIANCE CONTROLLER (NAC PANEL). COORDINATE EXACT LOCATION WITH OWNER PRIOR TO ROUGH-IN.
- 15. PROVIDE A SURFACE WALL MOUNTED FIRE ALARM SPEAKER.
- 16. DISCONNECT EXISTING SPRINKLER VALVES (TAMPER SWITCHES) AND FLOW SWITCHES FROM EXISTING FIRE ALARM SYSTEM. RECONNECT DEVICES TO NEW FIRE ALARM SYSTEM AS INDICATED ON DRAWING E-104. TYPICAL FOR VALVES/TAMPER SWITCHES AND FLOW SWITCHES.
- 17. PROVIDE (1) DUCT DETECTOR IN EXISTING AHU.



A FIRE ALARM FIRST FLOOR NEW WORK PLAN
E-104 SCALE: 1/8" = 1'-0"

NOTE:
PER EXCEPTION NO.3 TO ARTICLE 907.2.3 OF IFC 2018, AUTOMATIC SMOKE DETECTION IS BEING PROVIDED IN ALL INTERIOR CORRIDORS; IN AUDITORIUMS, CAFETERIAS, GYMNASIUMS, AND/OR SIMILAR SPACES; AND IN ANY SHOPS OR LABORATORIES, IN LIEU OF PROVIDING MANUAL PULL STATIONS THROUGHOUT THE BUILDING.



KEY PLAN
SCALE: NTS