



THE SCHOOL DISTRICT OF PHILADELPHIA
Office of Capital Programs
440 North Broad Street, 3rd Floor – Suite 371
Philadelphia, PA 19130

TELEPHONE: (215) 400-4730

ADDENDUM No. 03

Subject: Ellwood Elementary School
Window Replacement
SDP Contract No. B-013C of 2020/21

Location: Ellwood Elementary School,
6701 N. 13TH Street Road, Philadelphia, PA 19126

This Addendum No.3 dated June 6, 2022, shall modify and become part of the Contract Documents for the work of this project. Any items not mentioned herein shall be performed strictly in accordance with the original documents, as modified by prior addenda, if any.

CONTRACTOR QUESTIONS

Q. Please confirm that only windows with shade note #4 will get new shades.

A. Windows to receive new and/or reinstalled window shades are clearly indicated on sheet A2.01, however specification section 122413_3.6, Schedules includes areas in error.

Revise the specifications as follows:

Spec Section : 122413

Change: Part 3.6, SCHEDULES;

DELETE items 'A' thru 'J' in their entirety;

REPLACE text 'Provide window shades at the following locations:'

with 'Provide window shades at locations indicated on sheet A2.01.'

ATTACHMENTS

Drawing A6.00 .

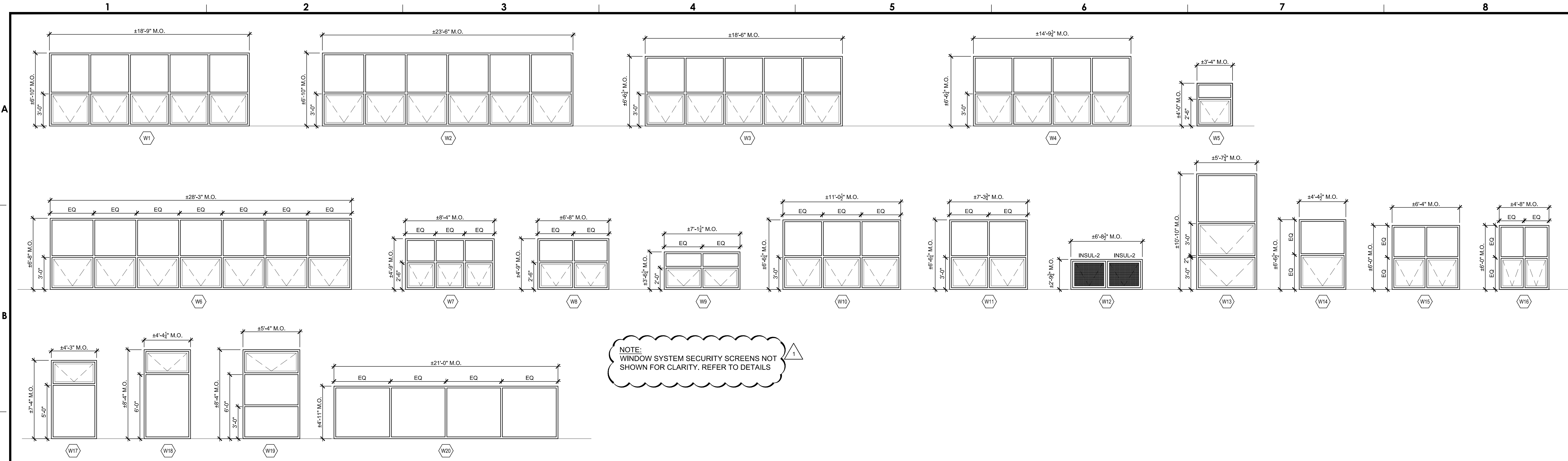
End of Addendum 03

SEAL:

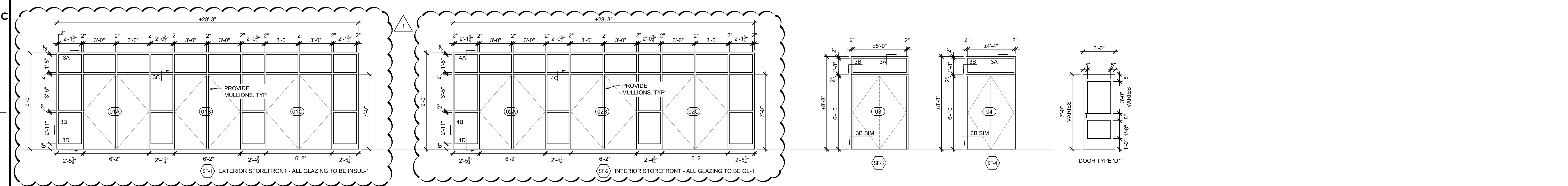
RONALD W. SCHWENKE III, R.A.
Pennsylvania RA#00321 DATE
03/25/2022

DESIGN DISCIPLINE TITLE

LAN ASSOCIATES
1018 Laurel Oak Road
Suite 11
Voorhees, NJ 08043
Phone: 856-375-2701
Email: Ron.Schwenke@lanassociates.com
Attn: Ron Schwenke

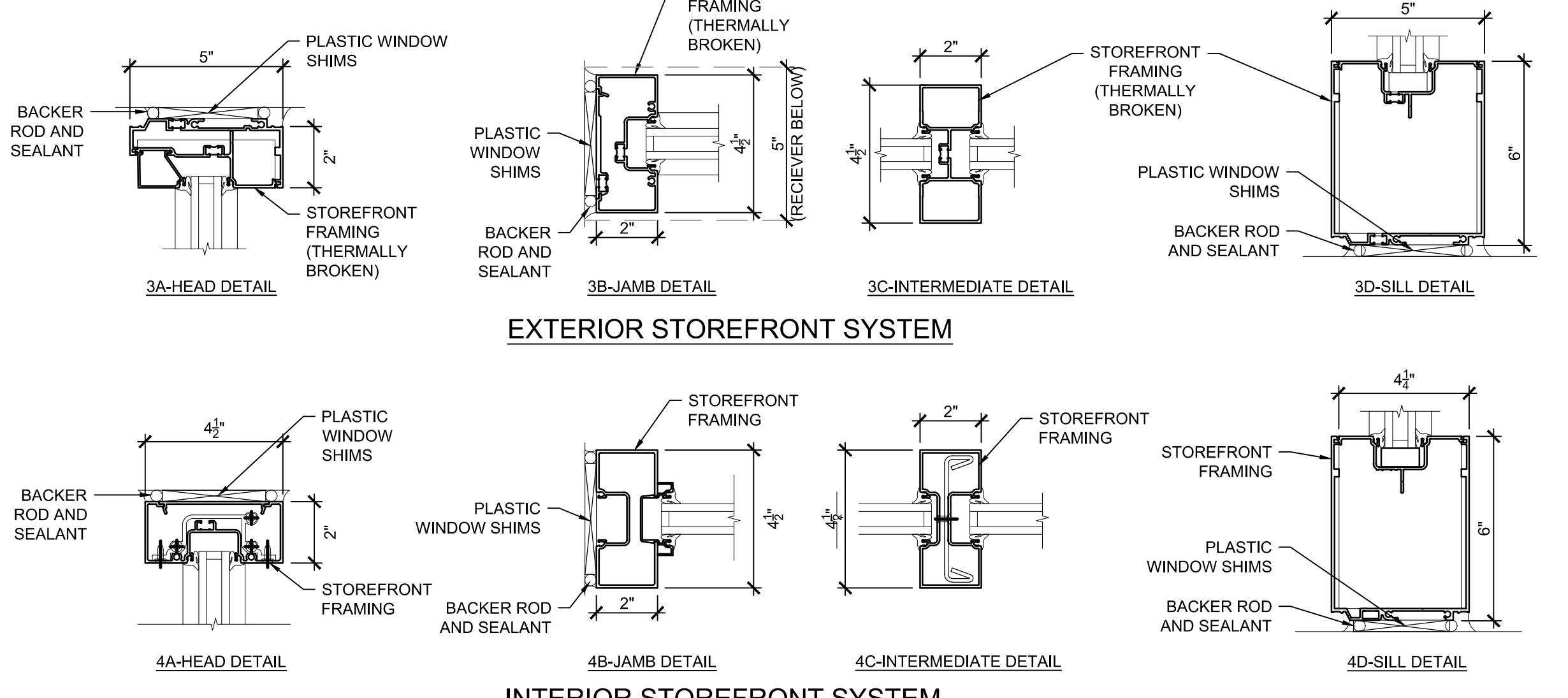


1 WINDOW TYPES
1/4" = 1'-0"



2 AUDITORIUM ENTRANCE AND DOOR TYPES
1/4" = 1'-0"

WINDOW SCHEDULE						
MARK	MASONRY OPENING		HEAD	JAMB	SILL	NOTES
	WIDTH	HEIGHT				
W-1	±18'-4"	±6'-10"	H-1	J-1 & J-7	S-1 & S-2	S-1 SILL IS STREET SIDE WINDOWS, J-1 AT COLUMN
W-2	±23'-6"	±6'-10"	H-1	J-1 & J-7	S-1 & S-2	S-1 SILL IS STREET SIDE WINDOWS, J-1 AT COLUMN
W-3	±18'-6"	±6'-6 1/2"	H-2	J-2 & J-7	S-3	J-7 AT COLUMN
W-4	±14'-4 1/2"	±6'-6 1/2"	H-2	J-2 & J-7	S-3	J-7 AT COLUMN
W-5	±13'-4 1/2"	±4'-0"	H-2 & H-3	J-2 & J-3	S-4	H-2 & J-3 IN 2ND FLOOR TOILETS
W-6	±28'-3"	±6'-0"	H-4	J-4	S-5	
W-7	±18'-4"	±4'-4"	H-5	J-5	S-6	
W-8	±6'-0"	±4'-4"	H-5	J-6	S-6	
W-9	±7'-4 1/2"	±3'-6 1/2"	H-2	J-2	S-3	
W-10	±11'-0 1/2"	±6'-6 1/2"	H-2	J-2	S-3	
W-11	±7'-3 1/2"	±6'-6 1/2"	H-2	J-2	S-3	
W-12	±6'-0 1/2"	±2'-4 1/2"	H-6	J-3	S-4	
W-13	±5'-1 1/2"	±10'-10"	H-2	J-2	S-7	
W-14	±4'-4 1/2"	±6'-6 1/2"	H-2	J-2	S-6	
W-15	±6'-4"	±6'-0"	H-7	J-6	S-6	
W-16	±4'-0"	±6'-0"	H-7	J-6	S-6	
W-17	±4'-3"	±7'-4"	H-8	J-6 SIM	S-8	
W-18	±4'-4 1/2"	±5'-4"	H-5 SIM	J-6	S-6	
W-19	±5'-4"	±5'-4"	H-5 SIM	J-6	S-6	



3 STOREFRONT DETAILS
3" = 1'-0"

Notes & Glazing Types

1. ALL GLAZING TO BE INSUL-1, U.N.O.

GLAZING TYPES:
INSUL-1: 1" TINTED, INSULATED, TEMPERED GLAZING
INSUL-2: 1" TINTED, INSULATED, TEMPERED, OPAQUE GLAZING
GL-1: TEMPERED, SAFETY GLAZING.

DOOR SCHEDULE														
DOOR NO.	DOOR TYPE	ROOM NAME / NUMBER	DOOR				FRAME			SILL			HARDWARE (SEE SPECIFICATIONS)	NOTES
			ACTION	MATERIAL	DOOR FINISH	MASONRY OPENING	DOOR SIZE	VISION PANEL	DETAIL NO.	DETAIL NO.	HARDWARE SET	CLOSER	PANIC	
1 FIRST FLOOR														
01A	D1	VESTIBULE	LHR / RHR	ALUM	CLEAR ANODIZED	SEE SF-1	3'-0" (2 ea)	7'-0"	INSUL-1	ALUM			SEE SPEC	2 LEAF DOOR SET WITH MULLION BETWEEN
01B	D1	VESTIBULE	LHR / RHR	ALUM	CLEAR ANODIZED	SEE SF-1	3'-0" (2 ea)	7'-0"	INSUL-1	ALUM			SEE SPEC	2 LEAF DOOR SET WITH MULLION BETWEEN
01C	D1	VESTIBULE	LHR / RHR	ALUM	CLEAR ANODIZED	SEE SF-1	3'-0" (2 ea)	7'-0"	INSUL-1	ALUM			SEE SPEC	2 LEAF DOOR SET WITH MULLION BETWEEN
02A	D1	CORRIDOR	LHR / RHR	ALUM	CLEAR ANODIZED	SEE SF-2	3'-0" (2 ea)	7'-0"	GL-1	ALUM			SEE SPEC	2 LEAF DOOR SET WITH MULLION BETWEEN
02B	D1	CORRIDOR	LHR / RHR	ALUM	CLEAR ANODIZED	SEE SF-2	3'-0" (2 ea)	7'-0"	GL-1	ALUM			SEE SPEC	2 LEAF DOOR SET WITH MULLION BETWEEN
02C	D1	CORRIDOR	LHR / RHR	ALUM	CLEAR ANODIZED	SEE SF-2	3'-0" (2 ea)	7'-0"	GL-1	ALUM			SEE SPEC	2 LEAF DOOR SET WITH MULLION BETWEEN
03	D1	CORRIDOR	LHR / RHR	ALUM	CLEAR ANODIZED	±5'-4"	SEE SF-3 (2 EA)	6'-10"	INSUL-1	ALUM			SEE SPEC	
04	D1	KINDERGARTEN	LHR / RHR	ALUM	CLEAR ANODIZED	±4'-8"	SEE SF-4 (2 EA)	6'-10"	INSUL-1	ALUM			SEE SPEC	

Issued for BID
March 25, 2022

NO.	DATE	REVISION
1	5/28/22	ADDENDUM #1
2		
3		
4		
5		
6		
7		
8		
9		
10		

SCHOOL & LOCATION
Ellwood Elementary
1201-51 OAK LANE, Philadelphia, PA

PROJECT TITLE
WINDOW REPLACEMENT
at
ELLWOOD ELEMENTARY SCHOOL

DRAWING TITLE
Window Types & Details

DRAWING SCALE
AS NOTED

LOCATION NO. 4060 FILE NO.

DRAWN BY DB CHECKED BY JP

B-013C OF 2020 / 21

DRAWING NO.
A6.00