

**THE SCHOOL DISTRICT OF PHILADELPHIA
Office of Capital Programs
440 North Broad Street, 3rd Floor – Suite 371
Philadelphia, PA 19130**

TELEPHONE: (215) 400-4730

Addendum No. 003

**Project: Envelope Repairs
SDP Contract Number: 2022-122-G**

**Location: Feltonville Intermediate School
238 East Wyoming Street, Philadelphia, PA 19120**

This Addendum, dated July 25, 2022 shall modify and become part of the Contract Documents for the work of this project. Any items not mentioned herein, or affected by, shall be performed strictly in accordance with the original documents.

ATTENTION ALL BIDDERS – IMPORTANT NOTICE

The following clarification is being issued regarding exterior renovations.

QUESTIONS & ANSWERS:

Q1: Please confirm that all windows are to receive new roller shades.

A1: Confirmed. As noted on Drawing A602 and A603 – Window Note No. 5.

CHANGES TO SPECIFICATIONS - None

CHANGES TO DRAWINGS:

1. Drawing COVER SHEET; **ADD:** New Architectural Drawings (this Addendum) to Drawing Index - A905, A906, and A907.
2. Drawing A905; **ADD:** Composite Building Elevations – Vinyl Graphics - A905 in its entirety.
3. Drawing A906; **ADD:** Partial Building Elevations – Vinyl Graphics – A906 in its entirety.
4. Drawing A907; **ADD:** Partial Building Elevations – Vinyl Graphics – A907 in its entirety.

CLARIFICATIONS - None

The Bid Due Date - Unchanged

END OF ADDENDUM #003

SDP CONTRACT NO. 2022-122-G



THE SCHOOL DISTRICT OF PHILADELPHIA

EXTERIOR RENOVATIONS TO FELTONVILLE INTERMEDIATE SCHOOL

238 EAST WYOMING AVENUE, PHILADELPHIA, PA 19120

General Construction: 2022-122-G

ISSUED FOR BID 06/24/2022

Owner:

SCHOOL DISTRICT OF PHILADELPHIA
440 North Broad
Philadelphia, PA 19130-4015
Phone: 215-400-4740
Fax: 215-400-4731
Email: nward@philasd.org
Attn: Nicole Ward, Design Manager
Office of Capital Programs
www.philasd.org

Architectural:

SCHRADERGROUP
161 Leverington Avenue, Suite 105,
Philadelphia PA 19127
Phone: 215.482.7440
Fax: 215.482.7440
Email: mhitchcock@sgarc.com
Attn: Mark Hitchcock
www.sgarc.com

Structural Engineer:

SCHRADERGROUP
153 E King Street, Suite 221-212
Lancaster PA 17602
Phone: 717.299.8965
Fax: 215.482.7440
Email: tforsberg@sgarc.com
Attn: Tom Forsberg
www.sgarc.com

Electrical:

SNYDER HOFFMAN ASSOCIATES
1005 W Lehigh St,
Bethlehem, PA 18018
Phone: 610.694.8020
Email: jmachik@snyderhoffman.com
Attn: Jeff Machik
www.snyderhoffman.com

ZONING DATA

USE & OCCUPANCY CLASSIFICATION:

EDUCATION GROUP E

CODE DATA

APPLICABLE CODES

PHILADELPHIA CODE:
THE PHILADELPHIA ADMINISTRATIVE CODE
PHILADELPHIA BUILDING CODE
PHILADELPHIA MECHANICAL CODE
PHILADELPHIA EXISTING BUILDING CODE
PHILADELPHIA ELECTRICAL CODE
PHILADELPHIA PERFORMANCE CODE
PHILADELPHIA ENERGY CONSERVATION CODE
PHILADELPHIA FIRE CODE
PHILADELPHIA FUEL GAS CODE
PHILADELPHIA ZONING CODE

INTERNATIONAL CODE COUNCIL:
2018 UNIFORM CONSTRUCTION CODE FOR PHILADELPHIA
2018 INTERNATIONAL BUILDING CODE
2018 INTERNATIONAL FIRE CODE
2018 INTERNATIONAL PLUMBING CODE (ADOPTED 10/1/2019)
2018 INTERNATIONAL MECHANICAL CODE
2018 INTERNATIONAL ENERGY CONSERVATION CODE
2018 INTERNATIONAL FUEL GAS CODE
2018 ICC PERFORMANCE CODE
2017 NATIONAL ELECTRIC CODE
2012 ADA STANDARDS FOR ACCESSIBLE DESIGN
2018 INTERNATIONAL EXISTING BUILDING CODE

CODE INFORMATION:

2018 INTERNATIONAL EXISTING BUILDING CODE - REPAIRS



LOCATION MAP

DRAWING INDEX

Sheet Index

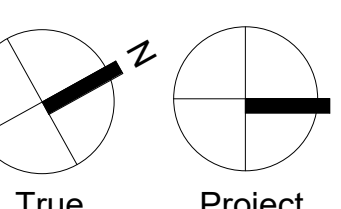
CS.1 COVER SHEET

Architectural

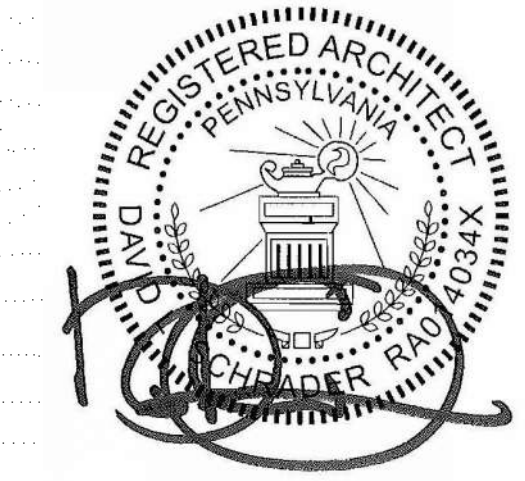
- A140 EXISTING CONDITIONS ROOF PLAN AND TYPICAL ABBREVIATIONS
- A141 DEMOLITION ROOF PLAN AND NEW ROOF PLAN
- AD201 COMPOSITE DEMOLITION BUILDING ELEVATIONS
- AD202 PARTIAL DEMOLITION BUILDING ELEVATIONS
- AD203 PARTIAL DEMOLITION BUILDING ELEVATIONS
- AD204 PARTIAL DEMOLITION BUILDING ELEVATIONS
- A201 COMPOSITE BUILDING ELEVATIONS
- A202 PARTIAL BUILDING ELEVATIONS
- A203 PARTIAL BUILDING ELEVATIONS
- A204 PARTIAL BUILDING ELEVATIONS
- A501 DETAILS
- A502 DETAILS
- A601 DOOR SCHEDULE
- A602 FRAME ELEVATIONS
- A603 FRAME ELEVATIONS
- A701 RAILING SECTIONS & DETAILS
- A702 STAIR LIFT PLAN & ELEVATION
- A902 PARTIAL BUILDING ELEVATIONS - FINISH COATINGS
- A903 PARTIAL BUILDING ELEVATIONS - FINISH COATINGS
- A904 PARTIAL BUILDING ELEVATIONS - FINISH COATINGS
- A905 COMPOSITE BUILDING ELEVATIONS - VINYL GRAPHICS
- A906 PARTIAL BUILDING ELEVATIONS - VINYL GRAPHICS
- A907 PARTIAL BUILDING ELEVATIONS - VINYL GRAPHICS

Electrical

- E000 COVER SHEET - ELECTRICAL
- E101 FIRST FLOOR PLAN - ELECTRICAL



SEAL:



NAME (LICENSED PROFESSIONAL): DAVID SCHRADER
DATE AND LICENSE NO.: 04/29/2021
STATE AND LICENSE NO.: RA014034X

Architectural:

SCHRADERGROUP
Address: 161 Leverington Avenue, Suite 105, Philadelphia PA 19127
Phone: 215.482.7440
Fax: 215.482.7440
Email: mhitchcock@sgarc.com
Attn: Mark Hitchcock

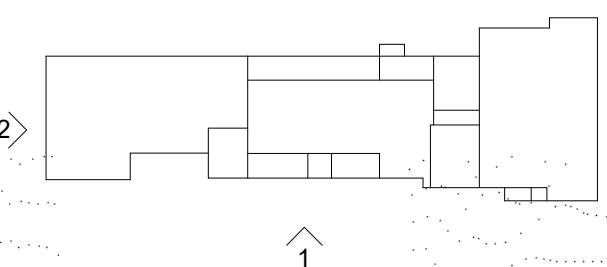
Structural Engineer:

SCHRADERGROUP
Address: 153 E King Street, Suite 221-212
Lancaster PA 17602
Phone: 717.299.8965
Fax: 215.482.7440
Email: tforsberg@sgarc.com
Attn: Tom Forsberg

Electrical:

SNYDER HOFFMAN ASSOCIATES
Address: 1005 W Lehigh St,
Bethlehem, PA 18018
Phone: 610.694.8020
Email: jmachik@snyderhoffman.com
Attn: Jeff Machik

Key Plan:



ISSUED FOR BID
06/24/2022

Revision Schedule		
NO.	DESCRIPTION	DATE
1	ADDENDUM #3	07/25/2022

SCHOOL & LOCATION
Feltonville Intermediate School
238 East Wyoming Avenue
Philadelphia, PA 19120

PROJECT TITLE
FELTONVILLE INTERMEDIATE
SCHOOL - EXTERIOR
RENOVATIONS

DRAWING TITLE

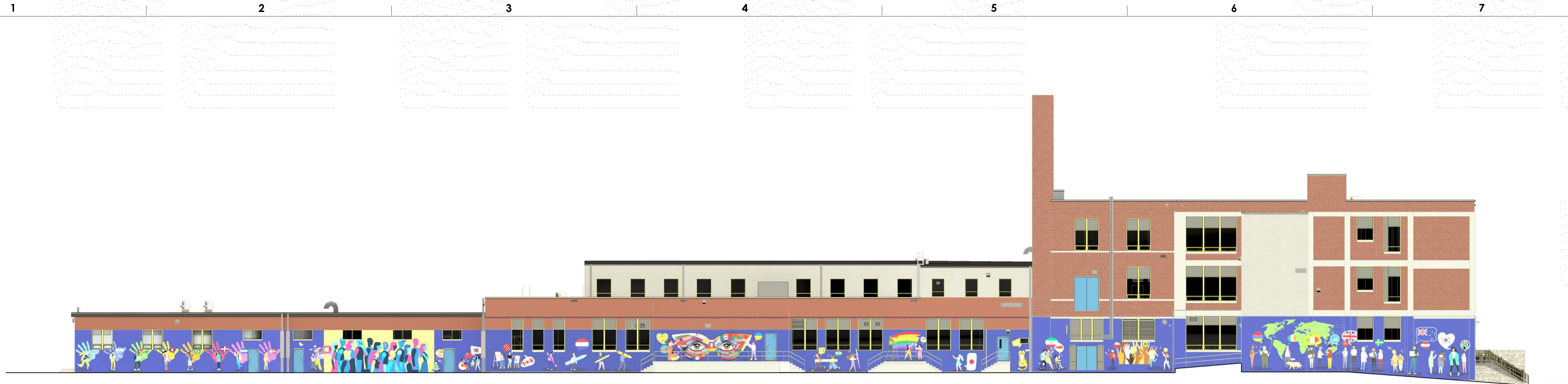
COMPOSITE BUILDING
ELEVATIONS - VINYL GRAPHICS

LOCATION NO. XXXX	FILE NO.
DRAWN BY PRG	CHECKED BY MGH
PROJECT NUMBER	

2022-122-G

DRAWING NO.

A905



1 COMPOSITE EAST ELEVATION
A905 SCALE: 1/16" = 1'-0"



2 COMPOSITE SOUTH ELEVATION
A905 SCALE: 1/16" = 1'-0"



3 COMPOSITE NORTH ELEVATION
A905 SCALE: 1/16" = 1'-0"

SEAL:



NAME (LICENSED PROFESSIONAL): DAVID SCHRADER DATE: 04/29/2021
STATE AND LICENSE NO.: RA014034K

Architectural:

SCHRADERGROUP
Address: 161 Leverington Avenue, Suite 105, Philadelphia PA 19127
Phone: 215.482.7440
Fax: 215.482.7440
Email: mhitchcock@sgarc.com
Attn: Mark Hitchcock

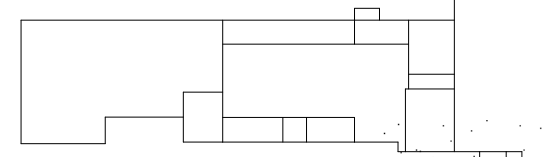
Structural Engineer:

SCHRADERGROUP
Address: 153 E King Street, Suite 221-212 Lancaster PA 17602
Phone: 717.299.8965
Fax: 215.482.7440
Email: tforsberg@sgarc.com
Attn: Tom Forsberg

Electrical:

SNYDER HOFFMAN ASSOCIATES
Address: 1005 W Lehigh St, Bethlehem, PA 18018
Phone: 610.694.8020
Email: jmachik@snyderhoffman.com
Attn: Jeff Machik

Key Plan:



ISSUED FOR BID
06/24/2022

Revision Schedule		
NO.	DESCRIPTION	DATE
1	ADDENDUM #3	07/25/2022

SCHOOL & LOCATION
Feltonville Intermediate School
238 East Wyoming Avenue
Philadelphia, PA 19120

PROJECT TITLE
FELTONVILLE INTERMEDIATE
SCHOOL - EXTERIOR
RENOVATIONS

DRAWING TITLE
PARTIAL BUILDING ELEVATIONS -
VINYL GRAPHICS

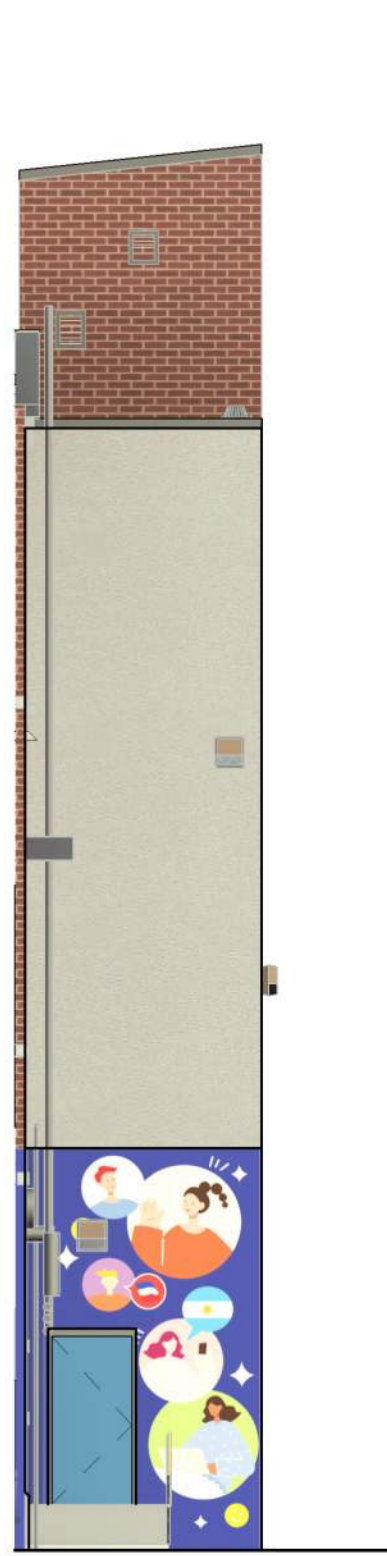
LOCATION NO. XXXX	FILE NO.
DRAWN BY PRG	CHECKED BY MGH
PROJECT NUMBER	
	2022-122-G
DRAWING NO.	A906



1 PARTIAL NORTH FINISH ELEVATION
A906 SCALE: 1/8" = 1'-0"



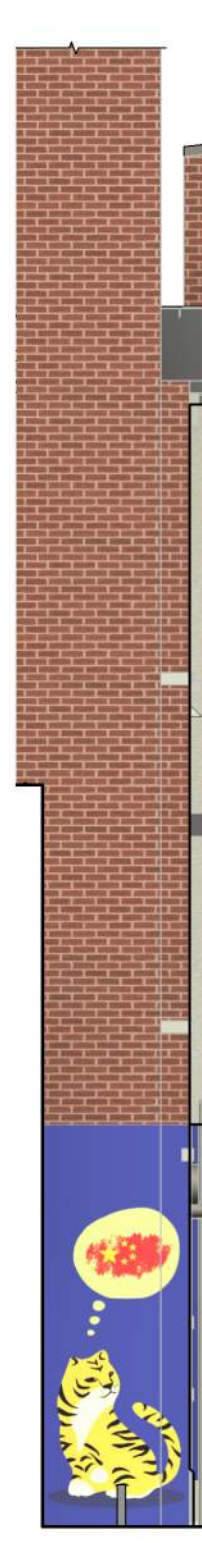
2 PARTIAL EAST FINISH ELEVATION
A906 SCALE: 1/8" = 1'-0"



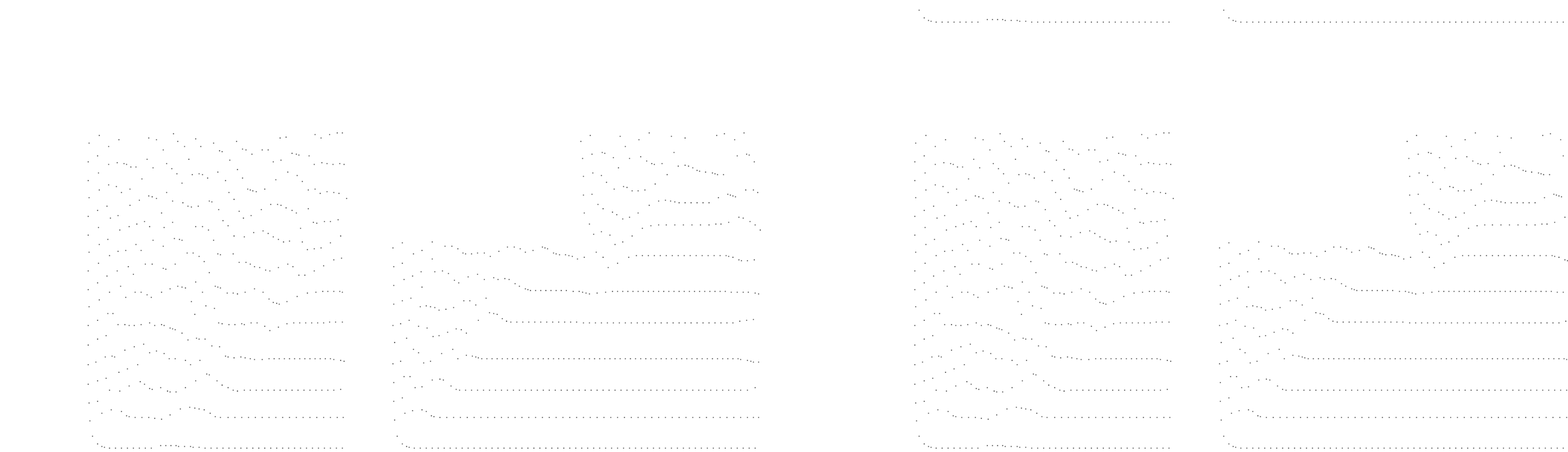
3 PARTIAL SOUTH FINISH ELEVATION
A906 SCALE: 1/8" = 1'-0"



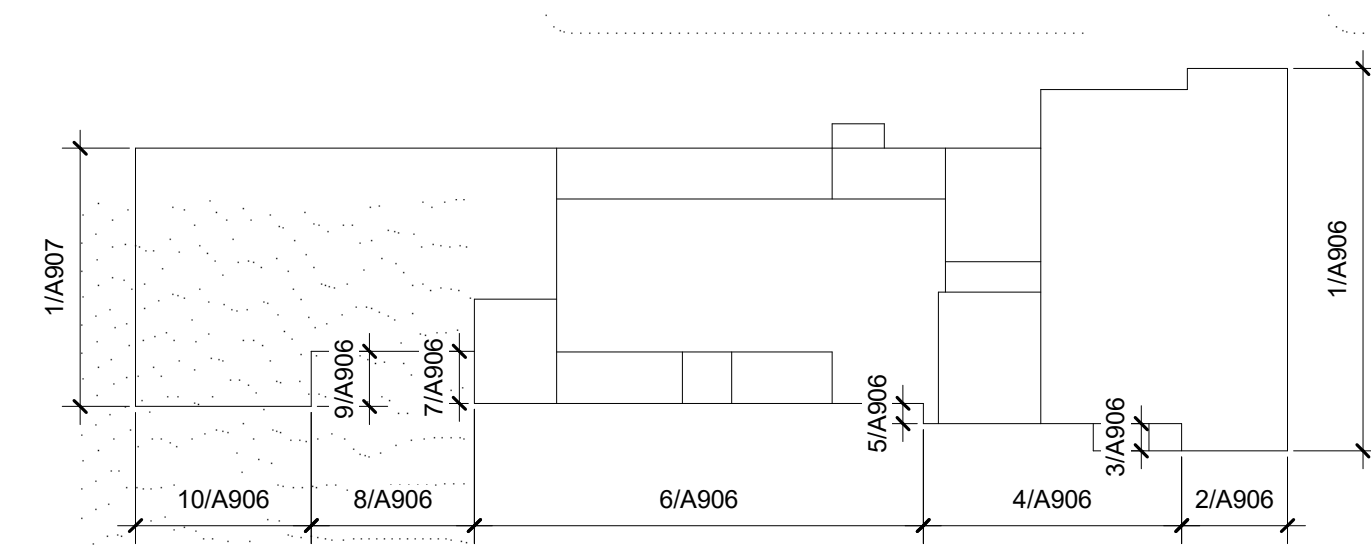
4 PARTIAL EAST FINISH ELEVATION
A906 SCALE: 1/8" = 1'-0"



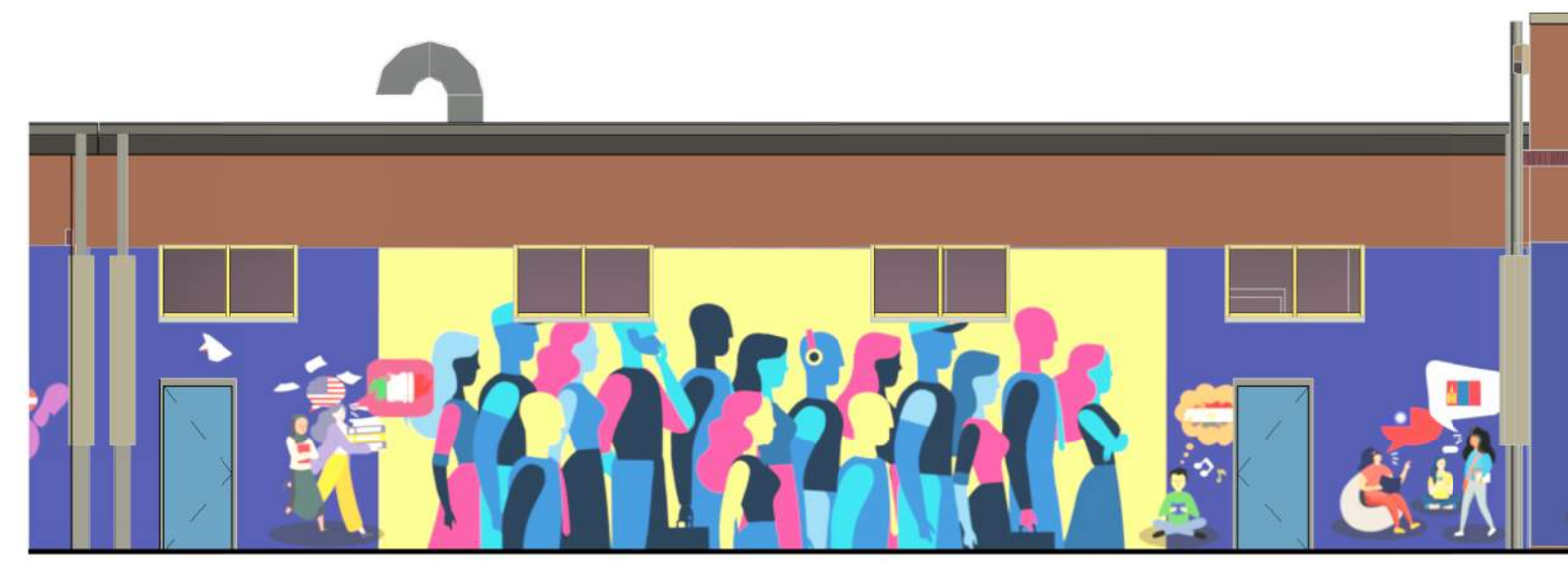
5 PARTIAL SOUTH FINISH ELEVATION
A906 SCALE: 1/8" = 1'-0"



6 PARTIAL EAST FINISH ELEVATION
A906 SCALE: 1/8" = 1'-0"



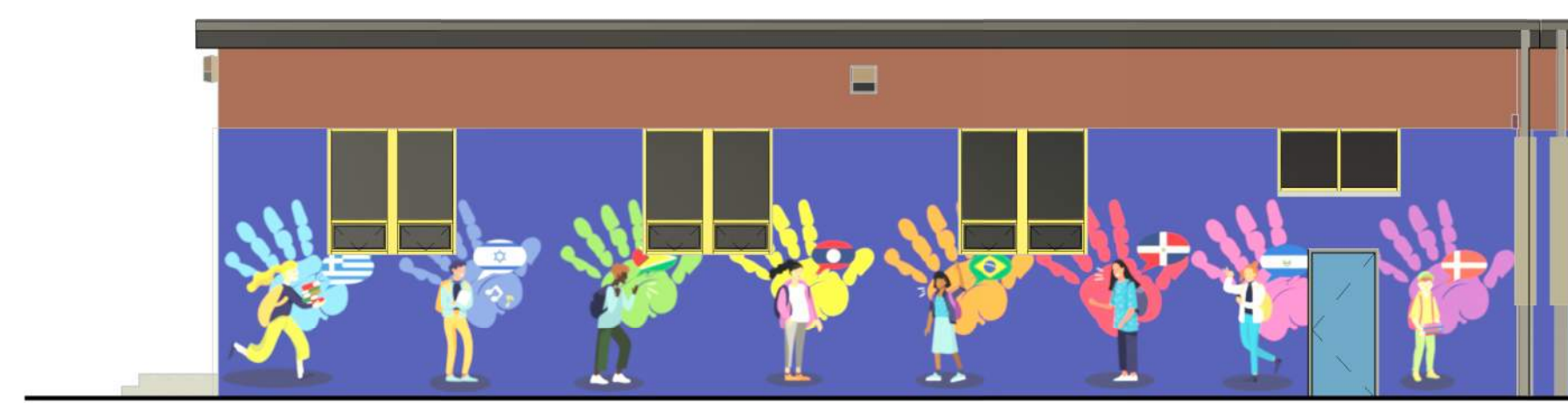
ELEVATION KEY PLAN
SCALE: 1/2" = 1'-0"



8 PARTIAL EAST FINISH ELEVATION
A906 SCALE: 1/8" = 1'-0"



9 PARTIAL NORTH FINISH ELEVATION
A906 SCALE: 1/8" = 1'-0"

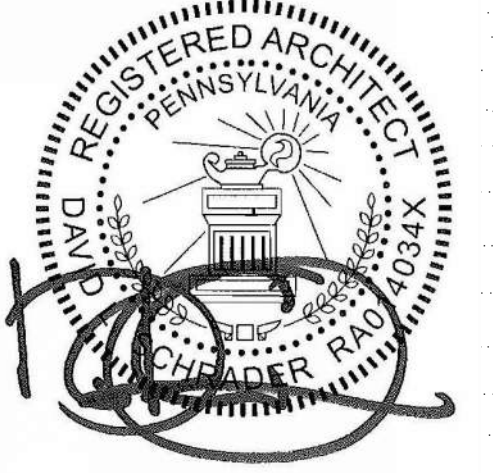


10 PARTIAL EAST FINISH ELEVATION
A906 SCALE: 1/8" = 1'-0"



7 PARTIAL SOUTH FINISH ELEVATION
A906 SCALE: 1/8" = 1'-0"

SEAL:



NAME (LICENSED PROFESSIONAL): DAVID SCHRADER
DATE: 04/29/2021
STATE AND LICENSE NO.: RA-014034X

Architectural:

SCHRADERGROUP
Address: 161 Leverington Avenue, Suite
105, Philadelphia PA 19127
Phone: 215.482.7440
Fax: 215.482.7440
Email: mhitchcock@sgarc.com
Attn: Mark Hitchcock

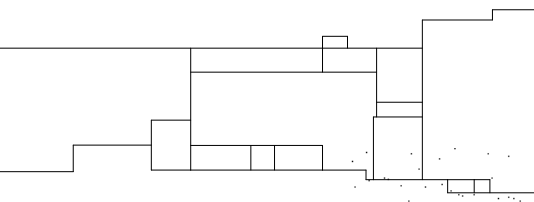
Structural Engineer:

SCHRADERGROUP
Address: 153 E King Street, Suite 221-212
Lancaster PA 17602
Phone: 717.299.8965
Fax: 215.482.7440
Email: tforsberg@sgarc.com
Attn: Tom Forsberg

Electrical:

SNYDER HOFFMAN ASSOCIATES
Address: 1005 W Lehigh St,
Bethlehem, PA 18018
Phone: 610.694.8020
Email: jmachik@snyderhoffman.com
Attn: Jeff Machik

Key Plan:



ISSUED FOR BID
06/24/2022

Revision Schedule		
NO.	DESCRIPTION	DATE
1	ADDENDUM #3	07/25/2022

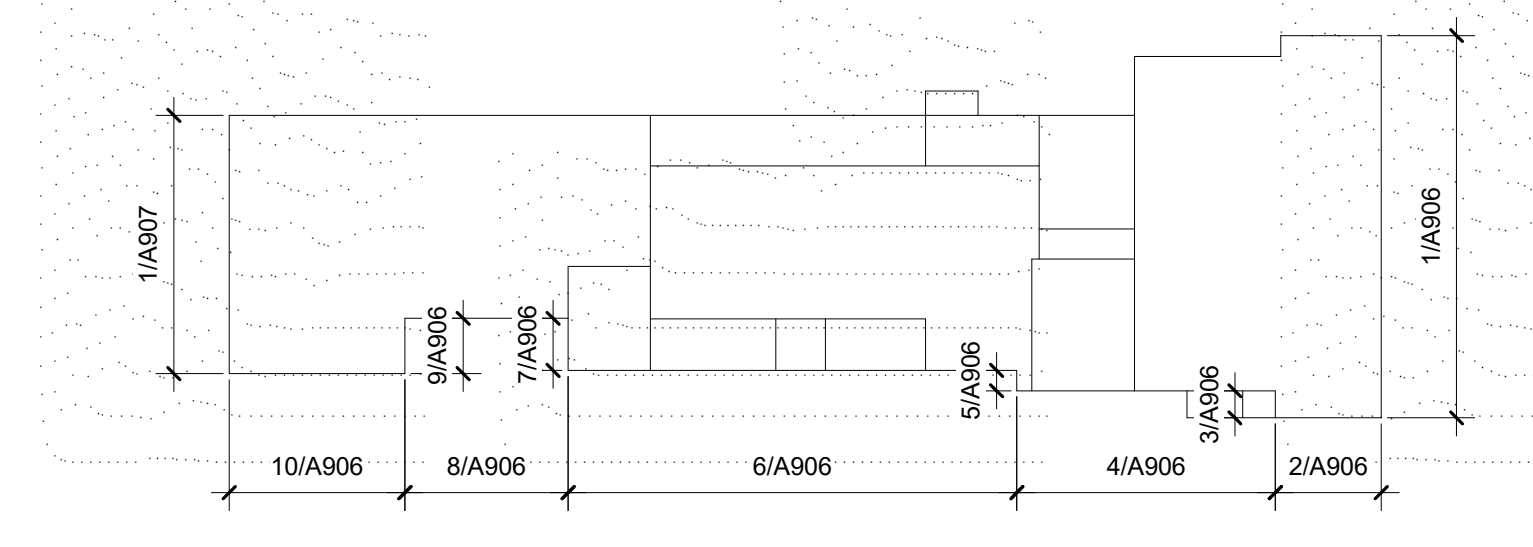
SCHOOL & LOCATION
Feltonville Intermediate School
238 East Wyoming Avenue
Philadelphia, PA 19120

PROJECT TITLE
FELTONVILLE INTERMEDIATE SCHOOL - EXTERIOR RENOVATIONS

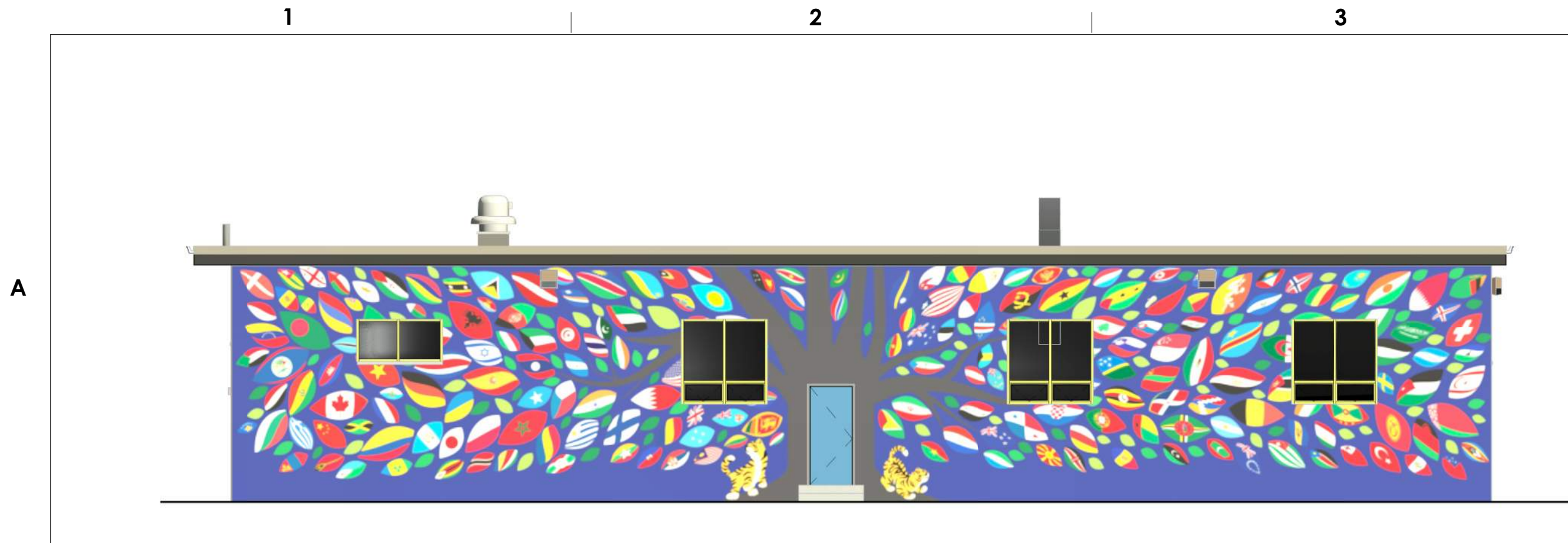
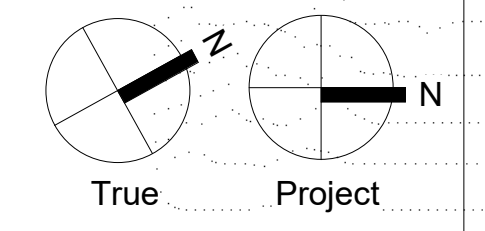
DRAWING TITLE
PARTIAL BUILDING ELEVATIONS - VINYL GRAPHICS

LOCATION NO. XXXX
DRAWN BY PRG
PROJECT NUMBER
2022-122-G

DRAWING NO.
A907



ELEVATION KEY PLAN
SCALE: 12" = 1'-0"



1 PARTIAL SOUTH FINISH ELEVATION
A907 SCALE: 1/8" = 1'-0"

