

**Our vision**

All Jackson students have the ability to achieve rigorous academic and social expectations through high-quality teaching that taps on multiple intelligences, real-world connections, and inquiry in a 21<sup>st</sup> Century learning environment. We will foster self-resiliency and autonomy to actualize leadership so that every student has the ability to empathize, respect, and function collaboratively with others to become contributing members of a global society.

Academic	Social/Emotional
Rigorous	Rigorous
High-quality teaching	Self-resiliency
Multiple intelligences	Autonomy
Real-world connections	Leadership
Inquiry	Empathize
21st Century Learning	Respect
	Function collaboratively
Contributing members of a global society	Contributing members of a global society

# How will we get there?

## 2019-2020 School Goals:

- Implement clear and consistent behavioral expectations that positively build leadership, encourage responsible decision-making, and hold students accountable to these expectations through implementing a PBIS program.
- Differentiate instruction so that ALL students have access to learning; monitor the progress of students and adjust instruction to meet his/her needs.
- Increase rigor by implementing the Common Core ELA and Math shifts with targeted supports defined by the core actions for each shift

# 18-19 End of Year Data

## Performance Management Dashboard School Climate Overview

(Updated as of Jun. 2019)

**PRELIMINARY END-OF-YEAR DATA**

### % with 95%+ Attendance

2018-2019 through Jun.; SDP: 46.5%

63.4%<sup>+0.5%</sup>  
YOY - Attendance

### % Chronically Truant

2018-2019 through Jun.; SDP: 31.4%

13.2%<sup>-1.3%</sup>  
YOY - Truancy

### % with Zero OS Suspensions

2018-2019 through Jun.; SDP: 93.6%

96.2%<sup>+0.6%</sup>  
YOY - Zero OSS

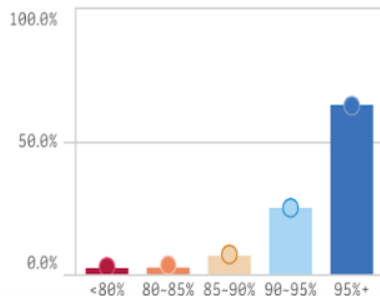
### Serious Incident Rate (per 100 ...)

2018-2019 through Jun.; SDP: 4.7

2.6<sup>-0.2</sup>  
YOY - Incidents

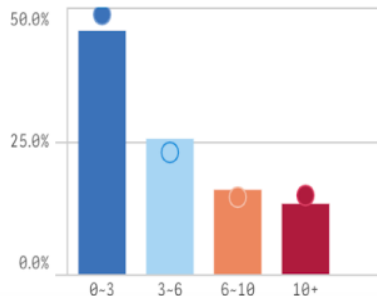
### Students by % Days Attended

2018-2019 (Bars) v. 2017-2018 (Circles), through Jun.



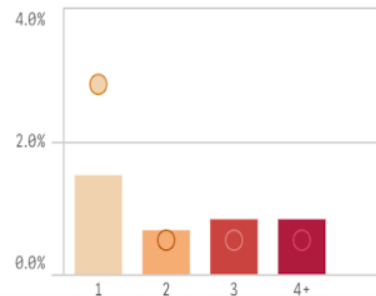
### Students by # Unexcused Absen...

2018-2019 (Bars) v. 2017-2018 (Circles), through Jun.



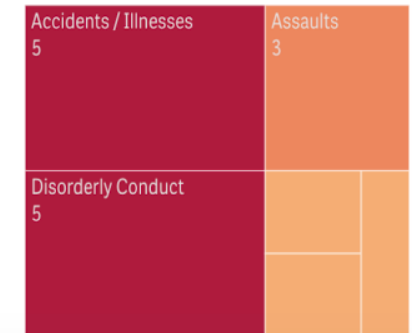
### Students by # OS Suspensions

2018-2019 (Bars) v. 2017-2018 (Circles), through Jun.



### Total Incidents by Type

2018-2019 through Jun.



# 18-19 End of Year Data

**Important Note:** SY2018-19 AIMSweb assessment scores were re-normed by Pearson. Comparisons to prior years are not encouraged. For more information, click [here](#).

Performance Management Dashboard

## Early Literacy Overview

(AIMSweb Updated as of Spring / Fourth Quarter 2018-2019, Course Marks Updated as of Q4)

### % Reading at Tier 1 (AIMSweb)

Grades K-2, 2018-2019 Spring

80.1%<sup>+4.2%</sup>  
YOY - % Tier 1

### % Meeting Minimum Growth Goal

Grades K-2, 2018-2019 through Fourth Quarter

73.3%<sup>+10.8%</sup>  
YOY - Growth

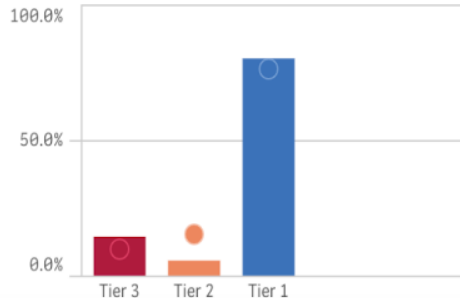
### % Reading on Grade Level (Instructional)

Grades K-2, Fourth Quarter 2018-2019

64.3%<sup>+12.3%</sup>  
YOY - % At Target

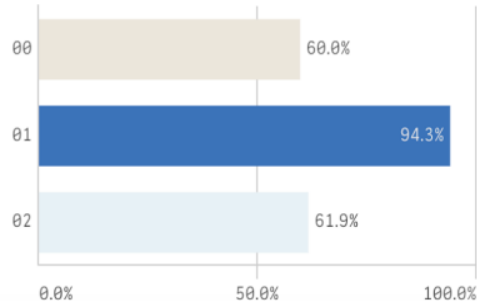
### K-2 Students by AIMSweb Tier

2018-2019 (Bars) v. 2017-2018 (Circles), Spring



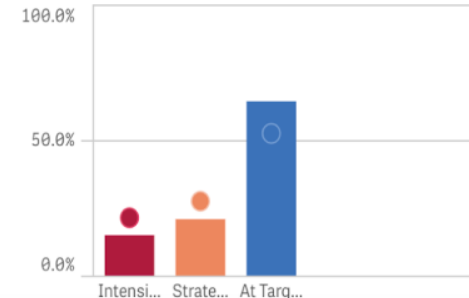
### Student Growth by Grade Level

2018-2019 through Fourth Quarter



### K-2 Students by Instructional Reading L...

2018-2019 (Bars) v. 2017-2018 (Circles), Fourth Quarter



# 18-19 End of Year Data

## PSSA and Keystone Performance

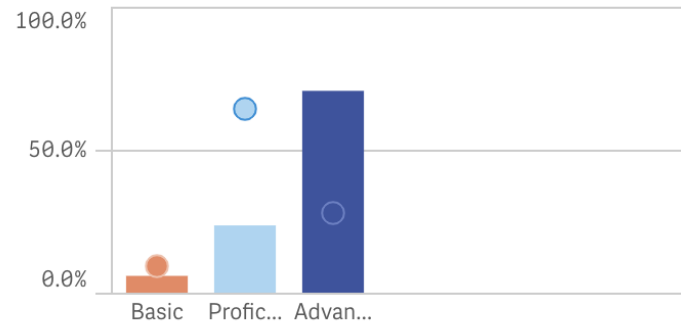
### Math % Proficient or Advanced (Keystone)

2018-2019 Jackson, Andrew School 17 Students.

94.1%<sup>+3.2%</sup>  
YOY % Pro/Adv - Math

### Math: Percent of Students by Performance Level ...

2018-2019 (Bars) v. 2017-2018 (Circles), District Schools.



# 18-19 End of Year Data

## PSSA and Keystone Performance

### ELA % Proficient or Advanced (Keystone and PSSA)

2018-2019 Jackson, Andrew School 368 Students.

47.8%<sup>+2.8%</sup>  
YOY % Pro/Adv - ELA

### Math % Proficient or Advanced (Keystone and PS...

2018-2019 Jackson, Andrew School 389 Students.

34.7%<sup>+8.9%</sup>  
YOY % Pro/Adv - Math

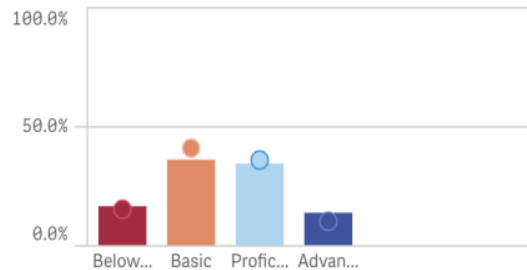
### Science % Proficient or Advanced (Keystone and ...

2018-2019 Jackson, Andrew School 118 Students.

54.2%<sup>+16.6%</sup>  
YOY % Pro/Adv - Science

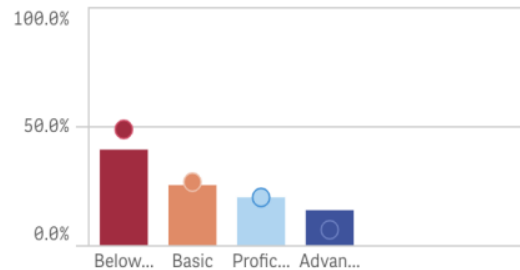
### ELA: Percent of Students by Performance Level (...)

2018-2019 (Bars) v. 2017-2018 (Circles), District Schools.



### Math: Percent of Students by Performance Level ...

2018-2019 (Bars) v. 2017-2018 (Circles), District Schools.



### Science: Percent of Students by Performance Le...

2018-2019 (Bars) v. 2017-2018 (Circles), District Schools.

