



June 2025



## Research Roundup

## Summer Programs in the School District of Philadelphia



**This webinar is being recorded.** The recording and a PDF of the slide deck will be available at:

[philasd.org/research/#researchwebinars](https://philasd.org/research/#researchwebinars)

# Agenda

1. About ERA and the Research Roundup Webinar Series
2. Overview of SDP Summer Learning Opportunities
3. Evaluations of Summer Programs in SDP Over Time
4. Using the Data to Improve Elementary Programs from 2023 to 2024: Summer Achievers
5. Using a Collaborative Model to Improve Data Collection and Reporting from 2023 to 2024
6. Looking Ahead to Summer 2025

# Evaluation, Research, and Accountability

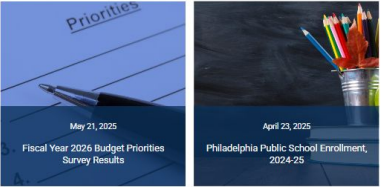
[philasd.org/era](https://philasd.org/era)

Evaluation,  
Research, and  
Accountability



- About →
- Goals & Guardrails →
- Student Assessments →
- School Planning & Supports →
- School Progress Reports (SPRPE) →
- Open Data →
- Data Governance →
- Research Publications →

The Office of Evaluation, Research, & Accountability (ERA) uses data and research to drive Philadelphia's schools. We empower educators with the information they need to make change for students. Learn more about how we support schools, collaborate on district research.



VIEW MORE OR SEARCH OUR REPORTS AND BRIEFS LIBRARY

[philasd.org/research/reports/](https://philasd.org/research/reports/)

[philasd.org/opendata](https://philasd.org/opendata)

### Open Data

In partnership with [Open Data Philly](#), the District publishes data sets spanning various operational school and student performance areas.

Before accessing data, please review the [Terms and Conditions](#).

Select a subject to view data sets

#### School Information

- School Lists
- School Enrollment & Demographics
- District Enrollment & Demographics
- Pre-School Information
- Catchment Feeder Schools
- School Catchment Areas
- School Catchment Retention Details
- School Catchment Retention Counts

#### School Perfor

- School Pro
- School Pro
- District SPC
- Alternative
- PSSA & Key
- District Gra
- School Gra
- Aimsweb-S



### Summer Programs 2024:

A summary of offerings, attendance, survey results, and recommendations

**Key findings:**

- During Summer 2024, nearly 15,000 students were enrolled in one of 13 different summer programs. Over 13,000 students attended a program for at least one day, and nearly 6,000 students attended a summer program for 75% or more of the total program days.
- Over 300 Summer School students graduated, and over 2,000 Summer School students received credits. Students who attended the Summer Achievers program did not lose as much summer learning time as students who did not attend.
- The program was well-received by students and staff. The same was not true for the Reading.
- The program was well-received by students and staff. The same was not true for the Reading.
- The program was well-received by students and staff. The same was not true for the Reading.



### Summer Programs 2023:

A summary of offerings, attendance, survey results, and recommendations

**Key findings:**

- During Summer 2023, over 14,000 students were enrolled in summer programming, over 11,000 students attended a program for at least one day, and over 5,000 students attended a summer program for 75% or more of the total program days.
- The program was well-received by students and staff. The same was not true for the Reading.
- The program was well-received by students and staff. The same was not true for the Reading.
- The program was well-received by students and staff. The same was not true for the Reading.

Sarah Arnold, MPA,  
*Park Research Analyst*


Sophia Weissman, BA,  
*Analysis, Strategic Analysis*

Daniel Inwood, MA,  
*Data Analyst*

Office of Research and Evaluation

February 2025

[schoolprofiles.philasd.org](https://schoolprofiles.philasd.org)



COMPARE SCHOOLS USER GUIDE VIDEO TUTORIALS

### SCHOOL PROFILES

Find out how a school or group of schools is performing.

Search for a school or narrow your search using the filters below. You can also view data for groups of schools (for example, all Charter Schools or all Network 1 Schools) by clicking on "School Groupings."

Find a School All Schools School Groupings

Search for a school:

Begin typing Search

Filters +

ACADEMY AT TALUBO

ACADEMY FOR THE MIDDLE YEARS (AMY) AT NORTHWEST

ACHIEVE ACADEMY

ACHIEVE ACADEMY EAST

AD PRIMA CHARTER SCHOOL

ADARE, ALEXANDER SCHOOL

ALLEN, DR. ETHEL SCHOOL

ALLEN, ETHAN SCHOOL

ALLEN, RICHARD PREPARATORY CHARTER SCHOOL

### PHILADELPHIA PUBLIC SCHOOLS

DATA FOR DISTRICT, CHARTER, ALTERNATIVE, AND OTHER/CYBER STUDENTS AND SCHOOLS

Enrollment: 2023-2024 (first update November 2024)

Performance and Climate data: 2021-2022 (first update Spring 2024)

Survey data: 2022-2023 (first update late 2023)

### TOTAL ENROLLMENT

197,115

### TOTAL SCHOOLS

331

SCHOOL DISTRICT OF PHILADELPHIA

CENTRAL OFFICE

442 N. Broad Street

Philadelphia, PA 19130

8 215-680-4000

SUPERINTENDENT

Tony B. Washington Sr., Ed.D.

2021-22 PSSA & KEYSTONE - ELA PERFORMANCE (ALL GRADES)

34%

A POINT DECREASE FROM PREVIOUS YEAR

The percentage of students who scored Proficient or Advanced on the state standardized English Language Arts exam.

DISTRICT PROGRESS TOWARDS GOALS AND HIGHLIGHTS

# What is a Research Roundup?

- Regular webinar series with a focus on topics aligned to the [Goals & Guardrails](#) and [Accelerate Philly](#)
- Videos and slide decks available from previous sessions
- Sign up to be notified when webinars are scheduled and when recordings are available: [philasd.org/research/#researchwebinars](https://philasd.org/research/#researchwebinars)

## Research Roundup Topics

Mar 2022 - Literacy Performance Grades K-3	Feb 2023 - Philadelphia Police School Diversion Program	Apr 2024 - Philly School Experience Survey (PSES)
Apr 2022 - Math Performance in Grades 3-8	Apr 2023 - Student Attendance	Jul 2024 - Relationship of Star and PSSA Performance 2022-23
May 2022 - 9th Grade "On Track" Rates and High School Graduation	May 2023 - Impact of Facility Investments in LA	Sep 2024 - Postsecondary Resource Roundup
Jun 2022 - Food Insecurity in the School District of Philadelphia	July 2023 - SPREE	Dec 2024 - Keystone Performance & Act 158 Pathways
Jul 2022 - English Learners and Students in Special Education	Sep 2023 - Trends, Transitions, and Supports for English Learners	April 2025 - Open Data
Oct 2022 - PERC: Keystone Graduation Pathways	Dec 2023 - The 9th Grade On-Track Metric	   
Dec 2022 - District-Wide Surveys	Feb 2024 - The Youth Risk Behavior Surveillance System (YRBS)	   





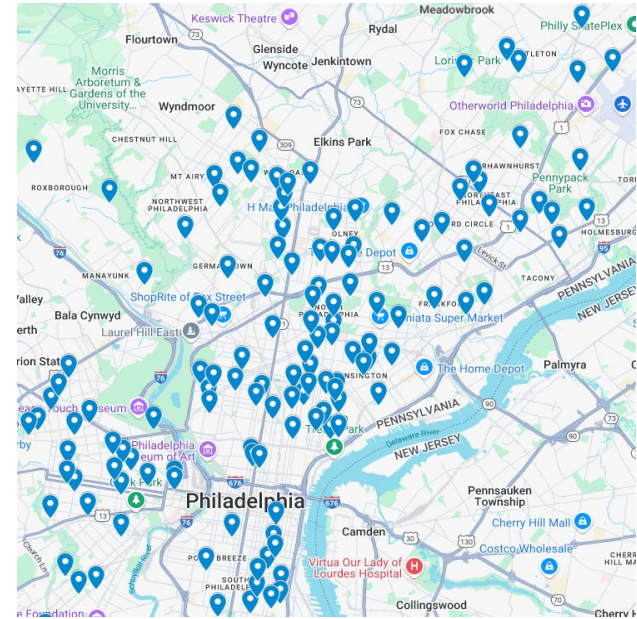
# Overview of SDP Summer Learning Opportunities

# Summer Learning Opportunities in Summer 2025

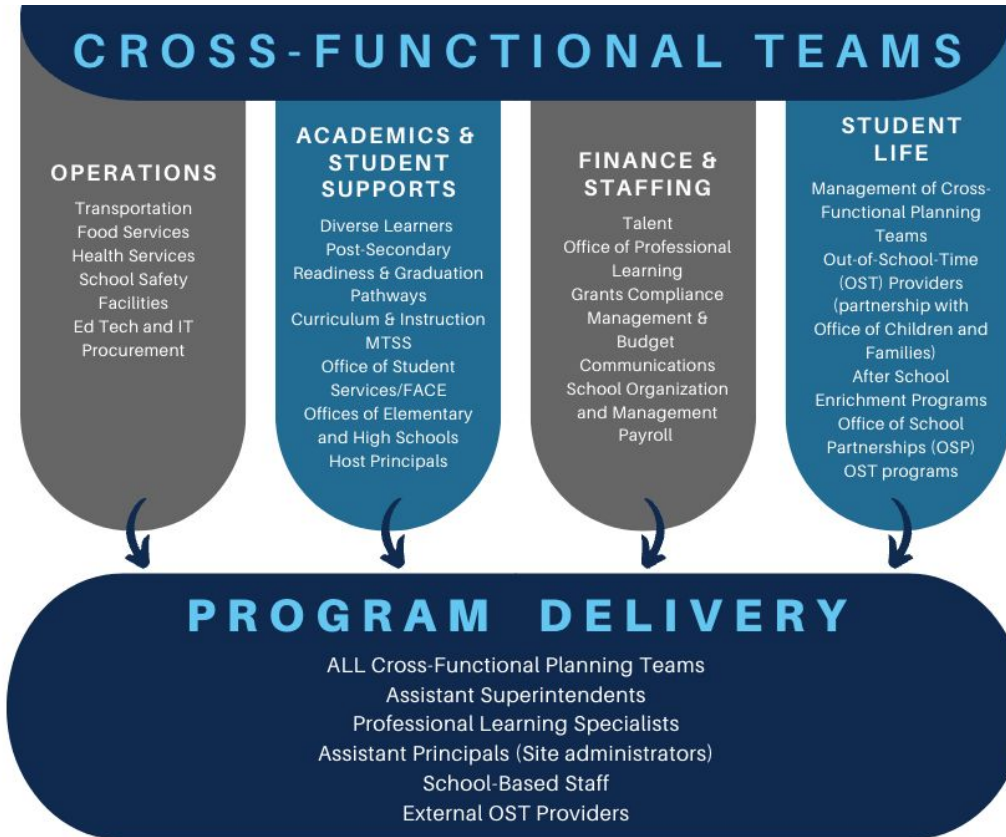
District-Run & Partnered Programs	External Programs
<ul style="list-style-type: none"> <li>● Summer Kindergarten Transition (virtual)</li> <li>● Grades 1-8 Summer Achievers (60 sites)</li> <li>● Grades 6-8 CTE Camp (6 sites)</li> <li>● Grades 6-12 Summer Drumline (3 sites)</li> <li>● Grades 6-12 All City Orchestra (Mann Center)</li> <li>● Grade 9 Young Entrepreneurs (1 site)</li> <li>● Grade 10-12 StartUp EDU</li> <li>● Grades 6-12 CareerPrep</li> <li>● Grades 10-12 CTE HS Programs (5 sites + external sites)</li> <li>● Grades 9 - 12 Summer School/Credit Recovery (5 sites)</li> <li>● Grades 1-8 Newcomer (7 sites)</li> <li>● Grades 1-12 Extended School Year (13 sites)</li> <li>● Grades 10-11 Gear Up</li> <li>● Grades 11-12 Senior Year Project and Dual Enrollment</li> <li>● Senior Year Project</li> </ul>	<ul style="list-style-type: none"> <li>● Non-District Paired OST</li> <li>● Office of Student Life After School Enrichment</li> <li>● School Partnership Agreement (SPA) Programs</li> <li>● Other Programs</li> </ul>

**Anticipated enrollment:**

**Anticipated enrollment:  
Over 25,000 students across all program types**



# Summer programs require planning across offices.



## Continuous Improvement Subteam

- Office of Student Life (OSL)
- Office of Research and Evaluation (ORE)
- Program Teams





# Evaluations of Summer Programs in SDP Over Time



# Overarching Research Questions



- To what extent did students enroll in—and attend—the summer programs?
- What were staff experiences during summer programming?
- What instructional practices were observed?
- Did students enjoy the summer programs and find them beneficial?
- Did families find the summer programs beneficial?
- What should we do differently for next year's programming?

# Data Sources



- Enrollment and attendance data
- Assessment data
- Staff survey
- Student survey
- Family survey
- Classroom observations
- Staff interviews

# Key recommendations from summer program evaluations remained consistent over several years.

**2020**

Evaluated 4 online programs  
serving ~6,000 students

[Evaluation Report](#)

**2021**

Evaluated 7 programs serving  
~12,000 students

[Evaluation Report](#)

**2022**

Evaluated 6 programs  
serving ~10,000 students

[Evaluation Report](#)

Improve communication and engagement with families.

Assign students to summer sites close to their homes.

Program locations should be adequately cooled and cleaned.

Provide equitable access to enrichment activities (e.g., arts & crafts, music, gym, & field trips).

PD should be aligned and relevant to the staff population, school, or course placement.

Increase staff access to student information, including contact information, SIS, and IEPs.



# Until 2023...when things changed!



## 2023

Evaluated 8 programs that served 11,000 students

[Evaluation Report](#)

Spring	Summer	Fall
<p>Change in summer program leadership and creation of Office of Student Life.</p> <p>New program team met with research team, reviewed the previous reports, made small adjustments, but had little time to make big changes.</p>	<p>Summer programming occurred, with new focus on within program attendance, enrollment, observations, and status reports (rather than end of summer summaries).</p>	<p>Summer program leadership team:</p> <ul style="list-style-type: none"><li>• Reviewed summer 2023 formative and summative evaluation results</li><li>• Considered recommendations</li><li>• Began collaboratively planning for summer 2024 programming and evaluation with researchers on the planning team</li></ul>



# And in 2024...summer programming looked different!

Recommendations from Prior Evaluations	Summer Programming in 2024
Improve communication and engagement with families.	✓ Focused on clear communication and family engagement
Assign students to summer sites close to their homes.	✓ More locations, closer to where students live
Program locations should be adequately cooled and cleaned.	✓ Earlier selection of appropriate sites where students and staff would be comfortable
Provide equitable access to enrichment activities (e.g., arts and crafts, music, gym, and field trips).	✓ Partnered with city providers for additional activities—arts, music, field trips, enrichment
PD should be aligned and relevant to the staff program, population, school, or course placement.	✓ Earlier selection of teachers and clearer PD aligned to assignment
Increase staff access to student information, including contact information, SIS, and IEPs.	✓ Increased access for lead teachers to student records to help inform instructional decisions
	Developed standardized tools for attendance tracking across programs

# How did this happen?

Molly Schlesinger, PhD,  
Senior Research Associate

Motun...  
Senior Re...  
Sophia...  
Associate, S...  
Office of E...  
Janu...

THE SCHOOL DISTRICT OF  
PHILADELPHIA

Summer Programs 2023:  
A summary of offerings,  
attendance, survey results, and  
recommendations

Key findings:

- During Summer 2023, over 14,000 students were enrolled in summer programming, over 11,000 students attended a program for at least one day, and over 5,000 students attended a summer program for 75% or more program days.
- Summer program staff were generally pleased with...

**SUMMER LEARNING TOOLKIT**

Evidence-based tools and guidance for delivering effective programs

PLANNING & MANAGEMENT  
ACADEMICS & ENRICHMENT  
STAFFING & PROFESSIONAL DEVELOPMENT  
SITE CLIMATE  
STUDENT RECRUITMENT & ATTENDANCE

summerlearningtoolkit.org

**TOOL: SUMMER PLANNING CALENDAR WORKBOOK**

For more information on the importance of comprehensive planning and tips for an effective year-round planning process, review the Summer Planning Calendar Companion Guide in the Summer Learning Toolkit.

**INTRODUCTION**

The Summer Planning Calendar supports school districts and their partners to take a year-round, comprehensive approach to planning academic summer programs. It is comprised of two complementary resources: the Workbook and the Companion Guide.

The Summer Planning Calendar is based on the approaches of a set of districts and their partners and draws best practices from their experiences as well as research and recommendations from the RAND Corporation and technical assistance and guidance provided by the Wallace Foundation.

The Workbook enables users to customize their own calendars based on the specific schedules, resources, and needs of their districts. While the tool is designed for district-run summer programs, content is likely relevant and applicable to others interested in running high-quality summer programs, including school-based summer leaders and other city agencies, intermediaries, and nonprofit organizations.

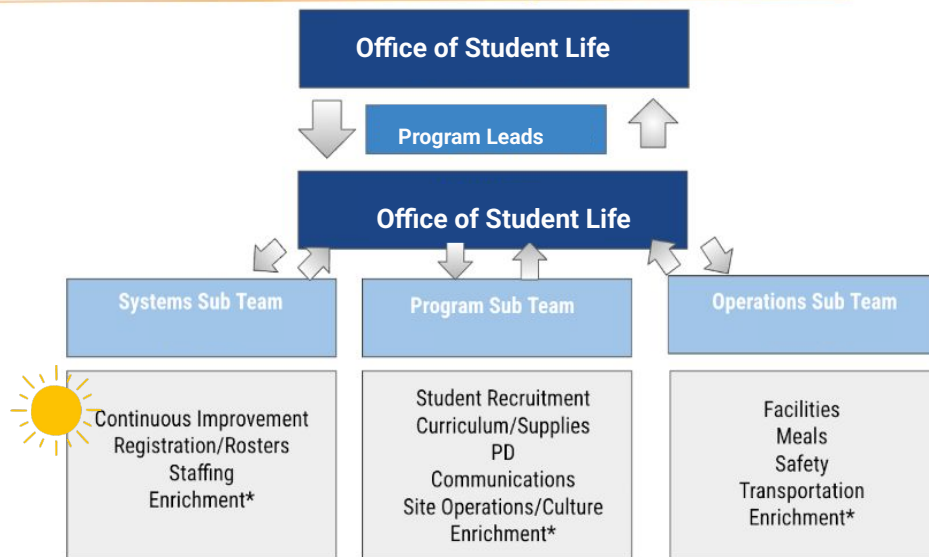
The Companion Guide provides background on the importance of each planning category in the Workbook and tips for getting started.

**HOW THE PLANNING CALENDAR IS ORGANIZED**

The Workbook organizes tasks and activities into 14 planning categories that represent the major areas of work required to design and deliver comprehensive summer programs. The categories are:

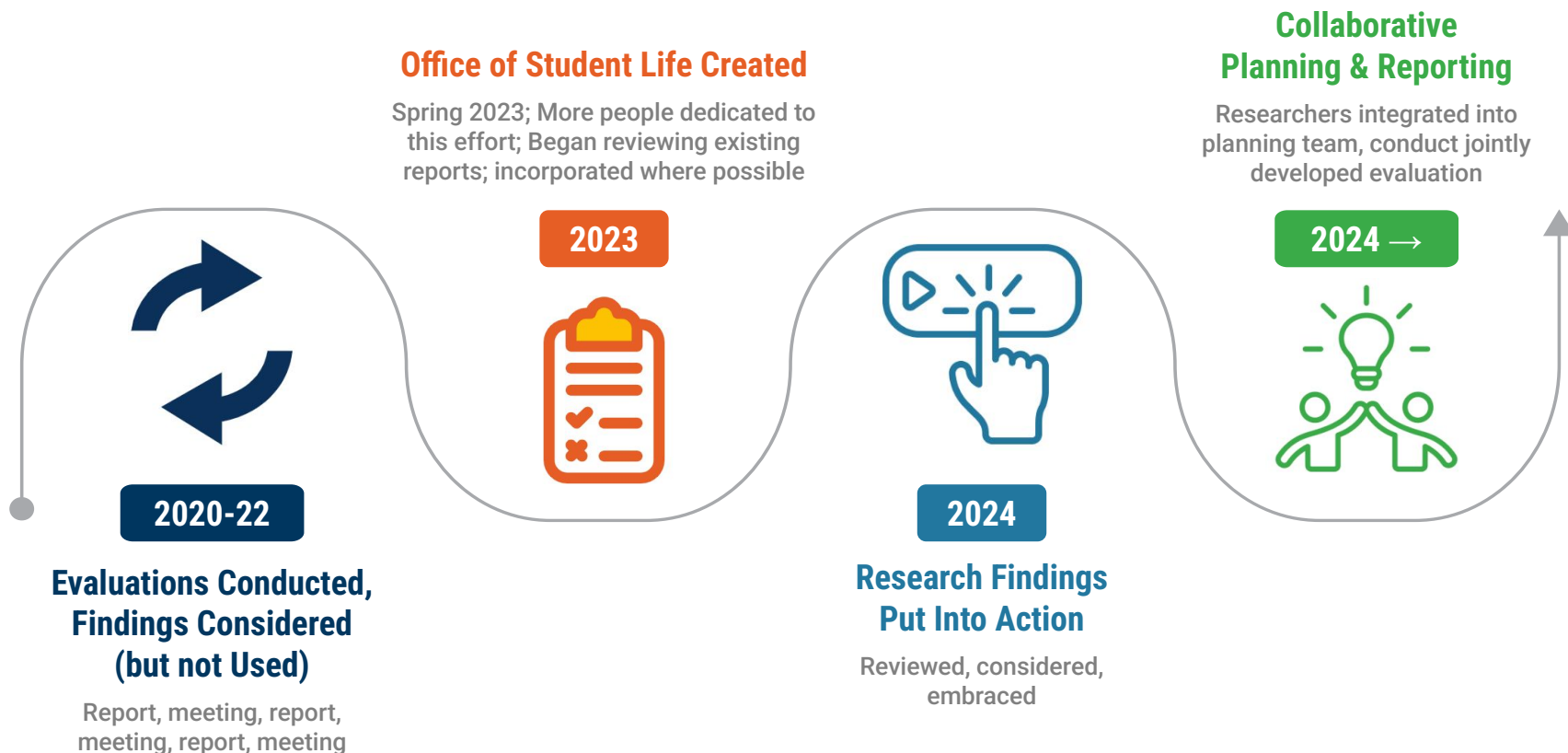
Instructions 12 Month Summary Planning & Management Continuous Improvement Program Budget Facilities

## Collaborative Summer Planning Structures





# Summer programs: An example of continuously improving the use of evidence in decision-making





**Using the Data to Improve  
Elementary Programs from 2023 to 2024:  
Summer Achievers**

# Elementary Summer Learning 2023

text	Summer Learning 1-7 (through 2023)
<b>Sites</b>	15 “Supersites”
<b>Students Served</b>	280 students per site
<b>Program Management</b>	Managed by SDP in close collaboration with Office of Children and Families (OCF)
<b>Staff</b>	SDP staffed the academic portion and contracted with OCF for enrichment
<b>Student Program</b>	Six Weeks - 8:30am–4:00pm Mon–Thu: AM Academics and PM Enrichment (two separate programs) Fri: Full Day Enrichment
<b>Curriculum</b>	SAAVAS used for all grades
<b>Student Recruitment and Registration</b>	Managed by SDP



# Summer 2023 Evaluation

## Quantitative

Program	Number enrolled	Of total enrolled, attended at least one day	
		#	%
Summer School	4,434	3,137	71%
Summer Drumline	106	79	75%
ESY	6,352	4,694	74%
Newcomer Program	384	281	73%
Summer Bridge	188	120	64%
Summer Learning	3,308	2,706	82%
<b>Total</b>	<b>14,772</b>	<b>11,017</b>	<b>75%</b>

## Enrollment & Attendance

How do we increase program utilization?

## Qualitative

*Recommendations from open-ended survey responses to reduce attendance barriers and increase attendance*

- Program locations should be closer to neighborhoods where high populations of program attendees live or attend school.
- Students recommended additional opportunities for art and music classes, as well as “specials.”
- Students requested a variety of fun activities, field trips, and opportunities to have special events and celebrations during the summer.

# Evolution of the Summer Achievers Model




	Summer Learning 1-7 (through 2023)	Summer Achievers 1-8 (2024)
<b>Sites</b>	15 "Supersites"	50 total sites serving 66 school communities  Out-of-School Time (OST) providers continue to serve the schools they operate within throughout the school year for summer programs
<b>Students Served</b>	280 students per site	Between 48–193 students per site
<b>Program Management</b>	Managed by SDP in close collaboration with OCF	Managed by Office of Children and Families (OCF) in close collaboration with SDP
<b>Staff</b>	SDP staffed the academic portion and contracted with OCF for enrichment	SDP staffing each site with teachers for academic instruction; OST programs staffing all other roles at each site for enrichment and operations; larger sites have a School Safety Officer
<b>Student Program</b>	Six Weeks - 8:30am–4:00pm Mon–Thu: AM Acad./PM Enrich. Fri: Full Day Enrichment	Six Weeks - 8:30am–5:00pm Mon–Thu: AM Acad./PM Enrich. (academic time embedded in OST programming) Fri: Full Day Enrichment
<b>Curriculum</b>	SAAVAS used for all grades	SDP instructional materials
<b>Student Recruitment and Registration</b>	Managed by SDP	Managed by OCF

# Enrollment and attendance data tell us the approach is working.

## Summer Learning 2023

Number Enrolled	Of total enrolled, attended at least one day	
	#	%
3,308	2,706	82%

## Summer Achievers 2024

Number Enrolled	Of total enrolled, attended at least one day	
	#	%
 4,313	 3,944	 91%



# Summer Achievers 2025

	Summer Learning 1-7 (through 2023)	Summer Achievers 1-8 (2024)	Summer Achievers 1-8 and EDEY (2025)
<b>Sites</b>	15 "Supersites"	50 total sites serving 66 school communities  Out-of-School Time (OST) providers continue to serve the schools they operate within throughout the school year for summer programs	60 total sites serving 67 school communities (includes all 20 EDEY schools)
<b>Students Served</b>	280 students per site	Between 48–193 students per site	Between 48–245 students per site
<b>Program Management</b>	Managed by SDP in close collaboration with OCF	Managed by Office of Children and Families (OCF) in close collaboration with SDP	
<b>Staff</b>	SDP staffed the academic portion and contracted with OCF for enrichment	SDP staffing each site with teachers for academic instruction; OST programs staffing all other roles at each site for enrichment and operations; larger sites have a School Safety Officer	
<b>Student Program</b>	Six Weeks - 8:30am–4:00pm	Six Weeks - 8:30am–5:00pm	
	Mon–Thu: AM Acad./PM Enrich. Fri: Full Day Enrichment	Mon–Thu: AM Acad./PM Enrich. (academic time embedded in OST programming) Fri: Full Day Enrichment	
<b>Curriculum</b>	SAAVAS used for all grades	SDP instructional materials	Redesigned SDP instructional materials
<b>Student Recruitment and Registration</b>	Managed by SDP	Managed by OCF	Managed by OCF, shared access to enrollment and attendance data through CitySpan



# Using a Collaborative Model to Improve Data Collection and Reporting from 2023 to 2024

# Planning and Continuous Improvement Cycle

## PLANNING

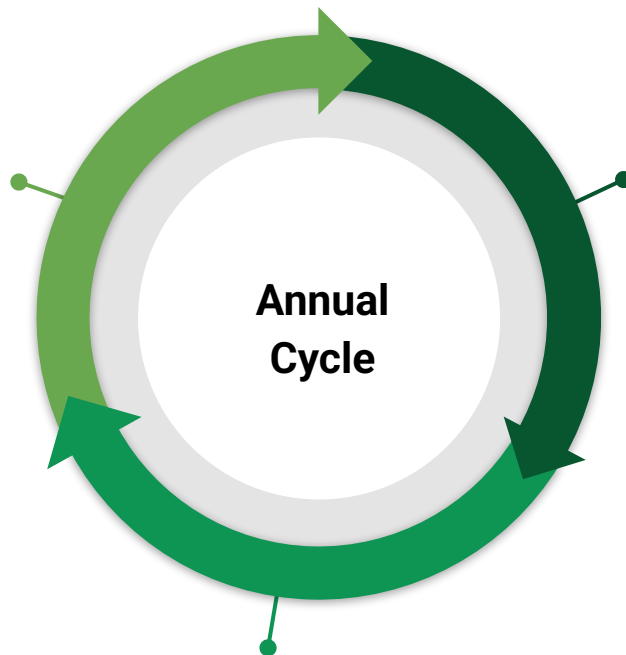
**January–May**

Product review, data  
collection tool  
development and  
refinement

## PROCESS

**June–August**

Data collection



**Annual  
Cycle**

## PRODUCT

**August–December**

Analysis and reporting

# Continuous Improvement: Focus on Planning

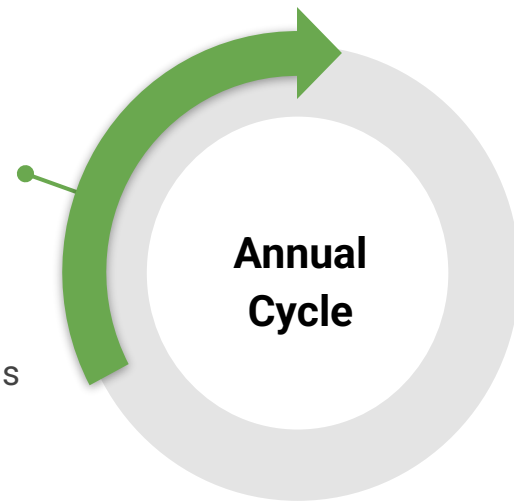
## PLANNING

January–May

**Continuous Improvement Subteam** members include staff of OSL, ORE, and other cross-functional representatives.



- Review and develop or improve data collection tools
  - Attendance trackers
  - Enrollment and attendance dashboard
  - Surveys
- Review and improve data collection processes
- Review and improve the evaluation report
  - Analyses
  - Visualizations
  - Format





# Summer programs in SDP are diverse.

The 2024 Summer Programs included in the evaluation were **13 distinct, District-wide programs**, all coordinated by the Office of Student Life. The individual programs varied tremendously and served a wide cross-section of School District of Philadelphia students.

## Summer Programs Evaluated in 2024

Size	Very small (<40 students) to very large (>4,000 students)
Grade levels	Pre-K to grade 12+
Student populations	Students with and without IEPs; EL and non-EL students
Content	Enrichment; Academic; Job skills; Two or all three of these
Site types	SDP Classroom, CBO partner, Virtual, Workplace
Number of sites	1 to 50

## Example 1: Attendance Tracking

## Our tools evolved to accommodate the additional programs

Programmers working on the Continuous Improvement Sub-Team developed “tailored, automated” **Attendance Trackers** for taking attendance.

[illegible]

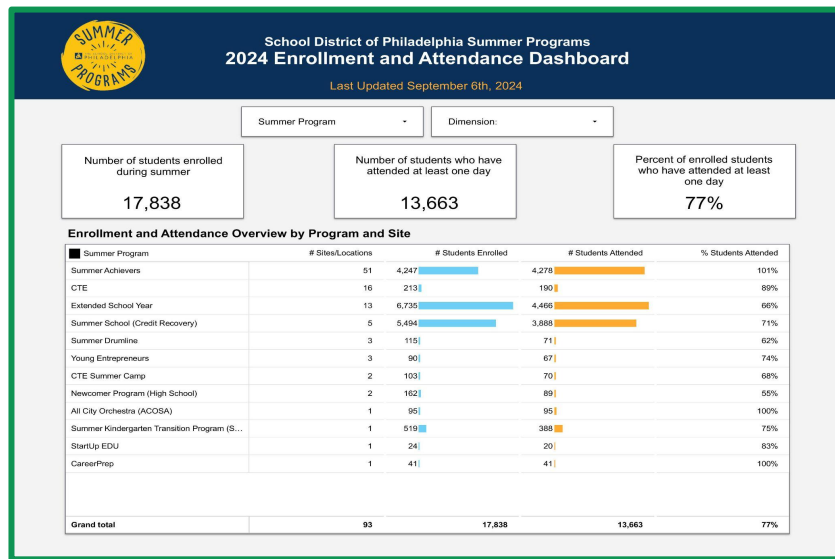
# Example 2: Enrollment and Attendance Dashboard

Our ability to monitor data in real time evolved to allow mid-course corrections as needed.

Continuous Improvement Subteam members also developed a Looker Studio **Enrollment and Attendance Dashboard**, so that Summer Program leads could see and review their program attendance while the programs were ongoing.

## Enrollment & Attendance Data

- (1) Student Information Systems
- (2) Automated attendance trackers
- (3) Cityspan (platform used by Summer Achievers program)

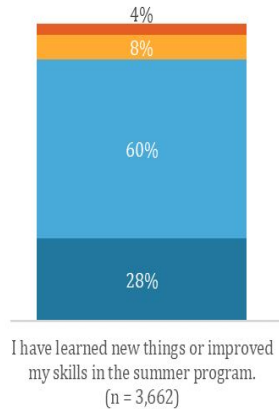


# Example 3: Changes to Analyses and Visualizations

**Our data analyses and reporting have evolved to provide more actionable findings.**

(1) We broke out select survey items by the four major program “buckets,” (2) we analyzed open-ended responses by program, and (3) in the recommendations, we referenced specific programs where relevant.

## 2023 Summer Evaluation

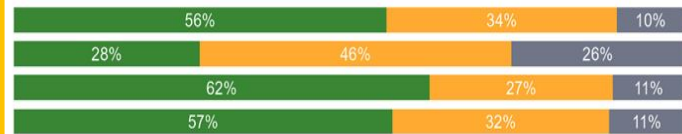


■ Strongly Agree ■ Agree ■ Disagree ■ Strongly Disagree

## 2024 Summer Evaluation

How much are these things true?

I have liked the activities, projects, and/or lessons in the summer program.



■ A lot ■ A little ■ Not at all

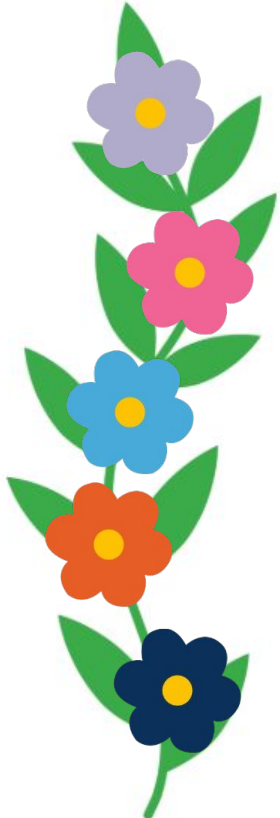




**Looking Ahead to Summer 2025**



# Summer Programming 2025: Continued Collaboration and Improvement



- Expanded Career and Technical Education camp opportunities for middle school students and increased sites for elementary students through Summer Achievers and Newcomer programs
- Increased adoption of the attendance trackers (Dual Enrollment, Senior Year Only Program)
- Enhanced communication system to support Summer School registration and enrollment
- Updated curriculum for Summer School and Summer Achievers, which will be used by a number of other programs
- Additional course offerings at Summer School

# Learn more about Summer Programs!

OFFICE OF  
**Academic Supports**

YOU ARE HERE > Academic Supports > Summer Programs

Programs & Services ▾ Staff Resources

## Summer Academic Programs

Programming for students entering grades K-12.



About Summer Programs →

Map of Locations →

Summer Kindergarten Transition →

Grades 1-8 Summer Achievers →

Grades 6-8 CTE Summer Camps →

Grades 6-12 Summer Drumline →

Grades 6-12 All City Orchestra →

Grade 9 Young Entrepreneurs →

Grades 10-12 StartUp EDU →

Gr. 6-12 CareerPrep Intern/Externships →

Grades 10-12 CTE Summer Employment →

Grades 9-12 Summer School →

Grades 1-12 Newcomer (English Learners) →

Welcome to the Summer Programs, here you'll find info about programs offered across District schools. We're committed to offering a fun, enriching, and community-centered experience that meets students' needs—academically, socially, and beyond.

We're excited to welcome students entering grades K-12 starting June 2025!

- ❖ Why do summers matter?
- ❖ Which of our students is a good fit for summer programming?
- ❖ Which program is right for me/my student?
- ❖ How do I get started?

**Download a Flyer in Your Language**  
English | Español | SHqip | العربية | 汉语 | Français | Igbo | Português | Русский |  
O'zbek | yepaticovca | Việt

**Looking for additional after-school & Summer experiences, outside of what the District is offering?**

Visit the City of Philadelphia's program locator to find Out-of-School Time activities for children in grades pre-K through 12.

[Learn More](#)



[philasd.org/summer](https://philasd.org/summer)

## Summer Programs Evaluation Reports:

[philasd.org/research/category/summer-programs/](https://philasd.org/research/category/summer-programs/)



THE SCHOOL DISTRICT OF  
PHILADELPHIA

**Questions?**