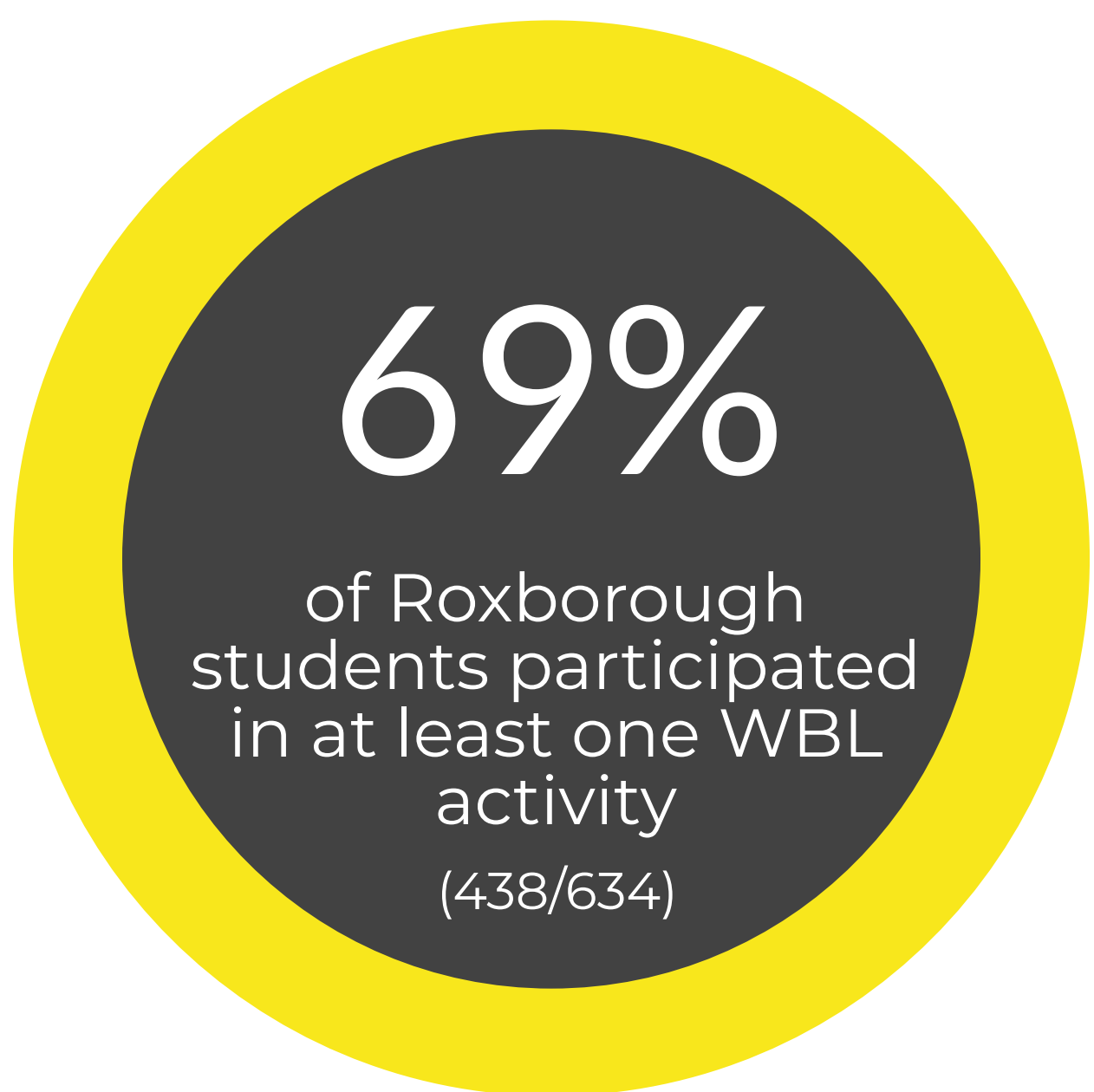
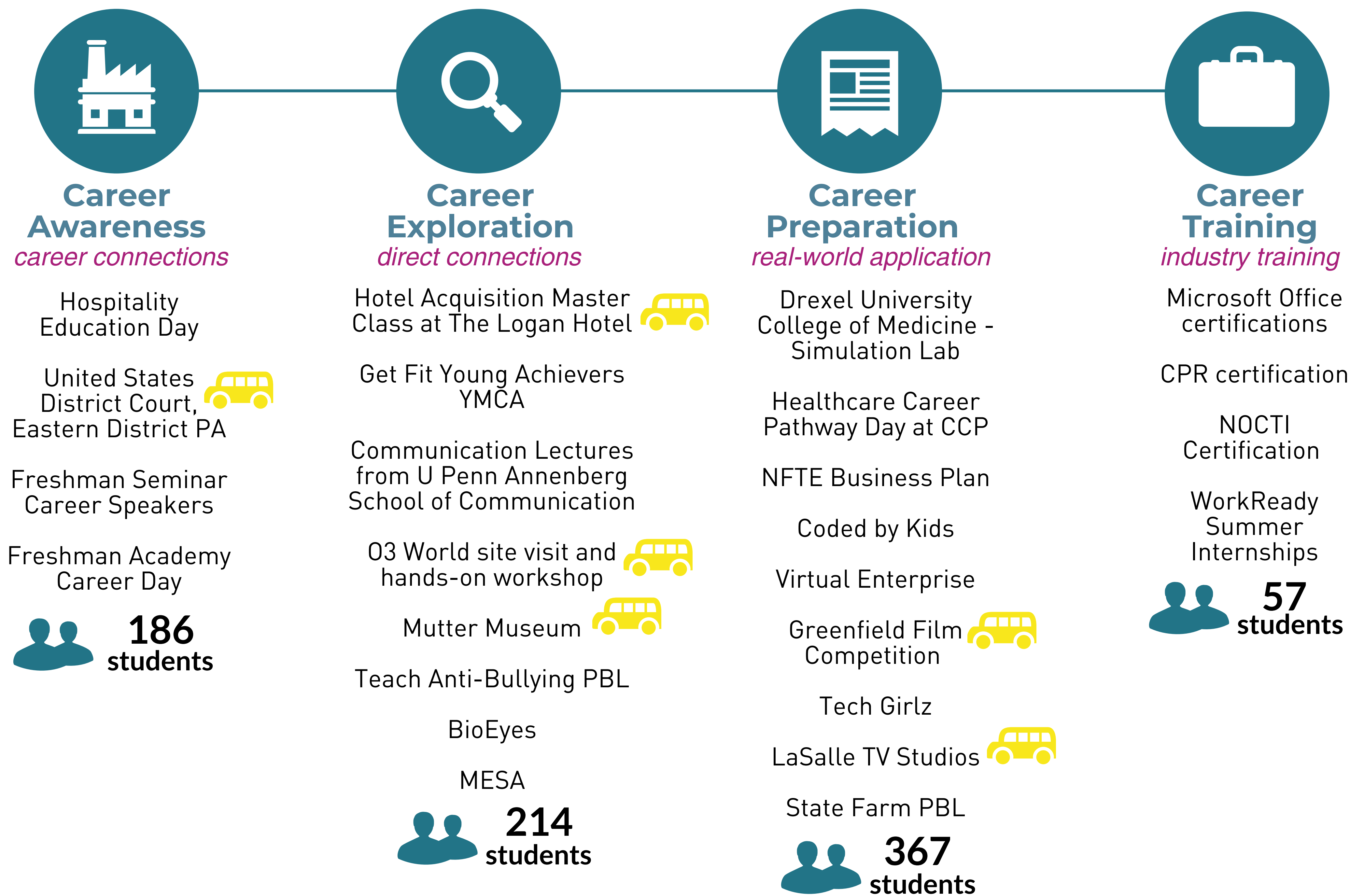


Roxborough High School

2016-17

Work-Based Learning

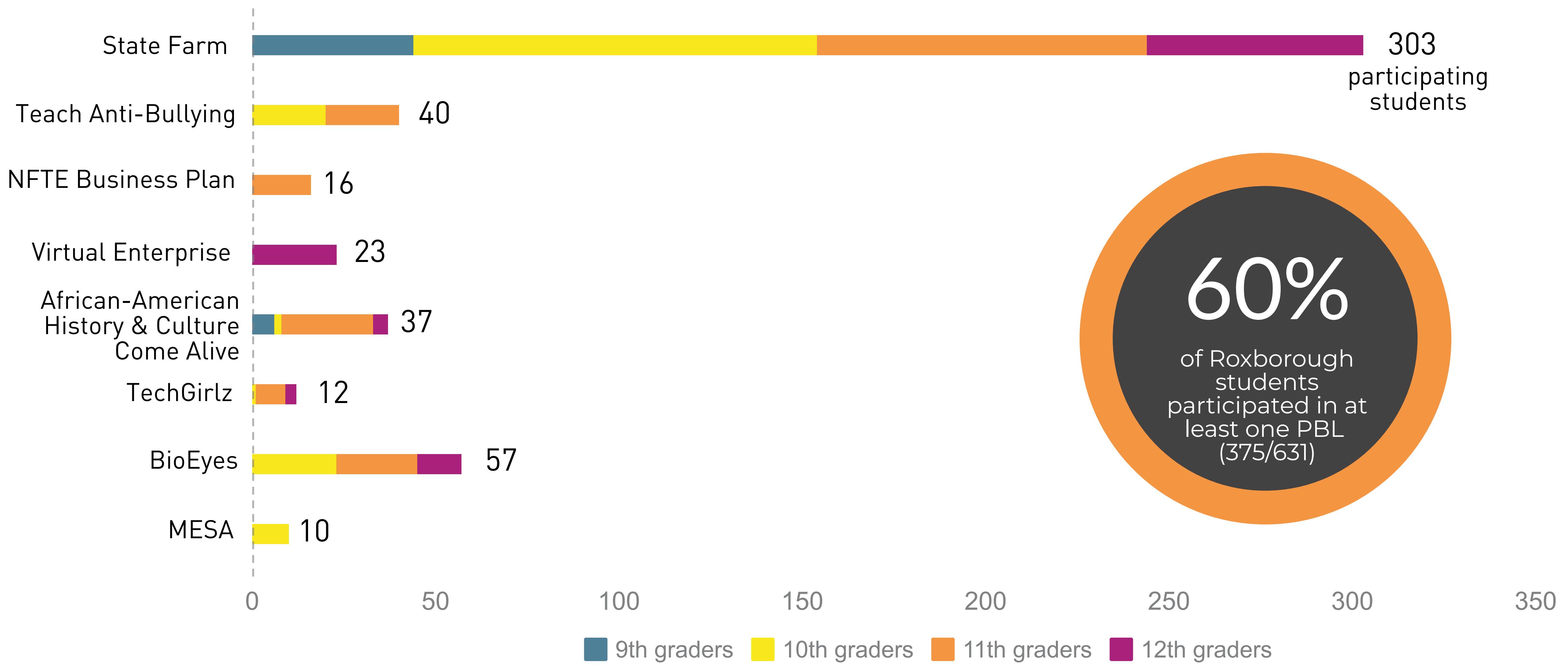


- PAI sponsored bus transportation

Directly Preparing Students for Work

	PSPS Interview Skills workshop 35 students		Resume Workshop 84 students
	Interview Expo 30 students		Completed WorkReady Online Applications 36 students

Project-Based Learning



Industry and Post-Secondary Involvement

Academy Occupational Advisory Councils

29 committed Academy Advisory Council members

12 committed Academy Advisory Council members who have not previously served on an OAC

22 Academy Advisory Council meetings in 2016-17



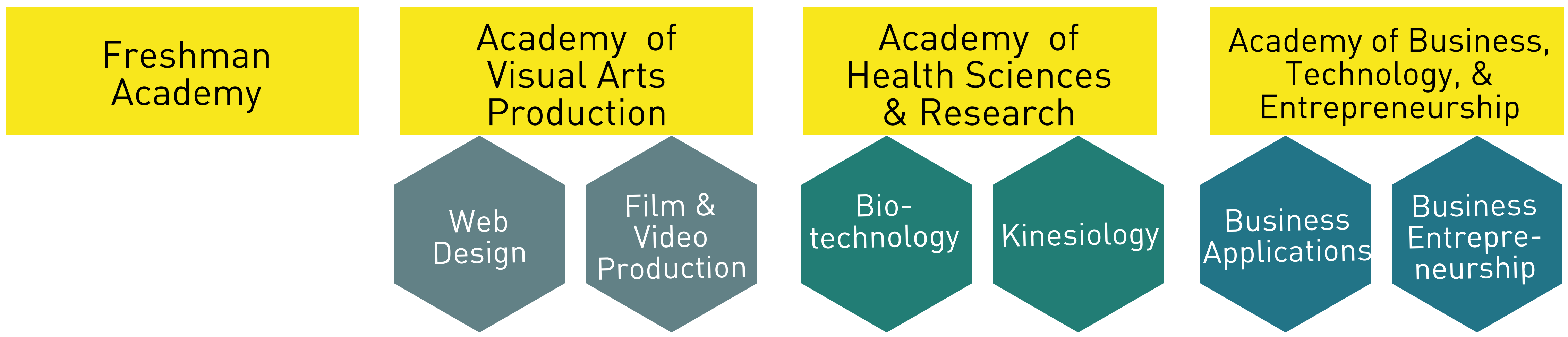
130 industry and post-secondary volunteers at Roxborough

Involved Industry and Post-Secondary Organizations (partial list):

- Community College of Philadelphia ●
- ShopRite ●
- Mr. Steve Rauscher ●
- 1199C Training and Upgrading Fund ●
- Drexel University College of Medicine ●
- ExCite Center ●
- Montgomery County Community College ●
- Temple University ●
- The Food Trust ●
- Dynamic Advertising Solutions ●
- M & T Banking ●
- empowerment Now, LLC ●
- NFTE ●
- U Penn, Wharton School of Business ●
- U Penn, Annenberg School of Communication ●
- LaSalle University ●
- Cabrini University ●
- Drexel University ●
- O3 World ●
- Lankenau Hospital ●
- State Farm ●
- Main Line Health ●
- PHMC ●
- Comcast ●
- Coded by Kids ●
- TechGirly ●
- Chestnut Hill College ●

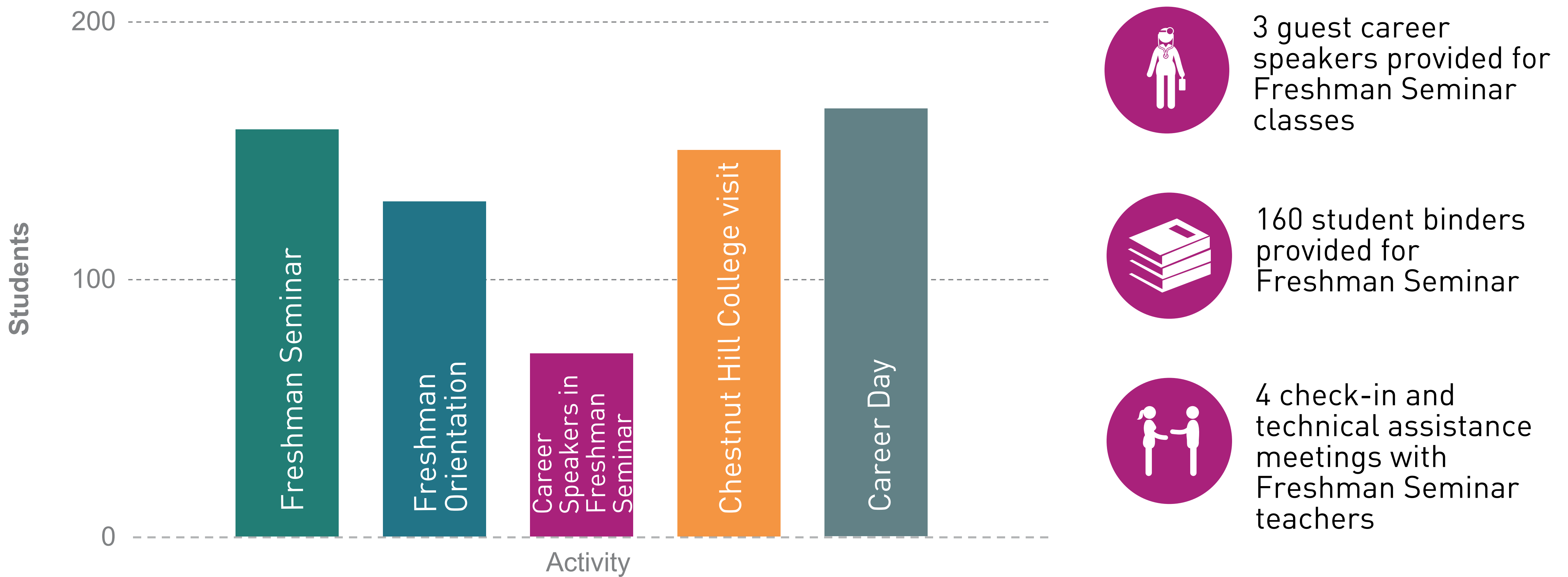
● - supported Project-Based Learning (PBL)
 ● - supported Work-Based Learning (WBL) through guest speakers, industry tours, etc.

Career Academy Model



Freshman Academy

Large-Scale Events Support



Data & Metrics



Student Ambassadors

Academy Student Ambassadors received extensive training and supported and/or led...

- Elementary School presentations (Cook Wissahickan, Dobson, CW Henry, and Jenks)
- School Tours with potential funders, industry professionals, parents, and students
- High School Fair
- Special events
- Hosting of Career Speakers

