

School Improvement Meeting

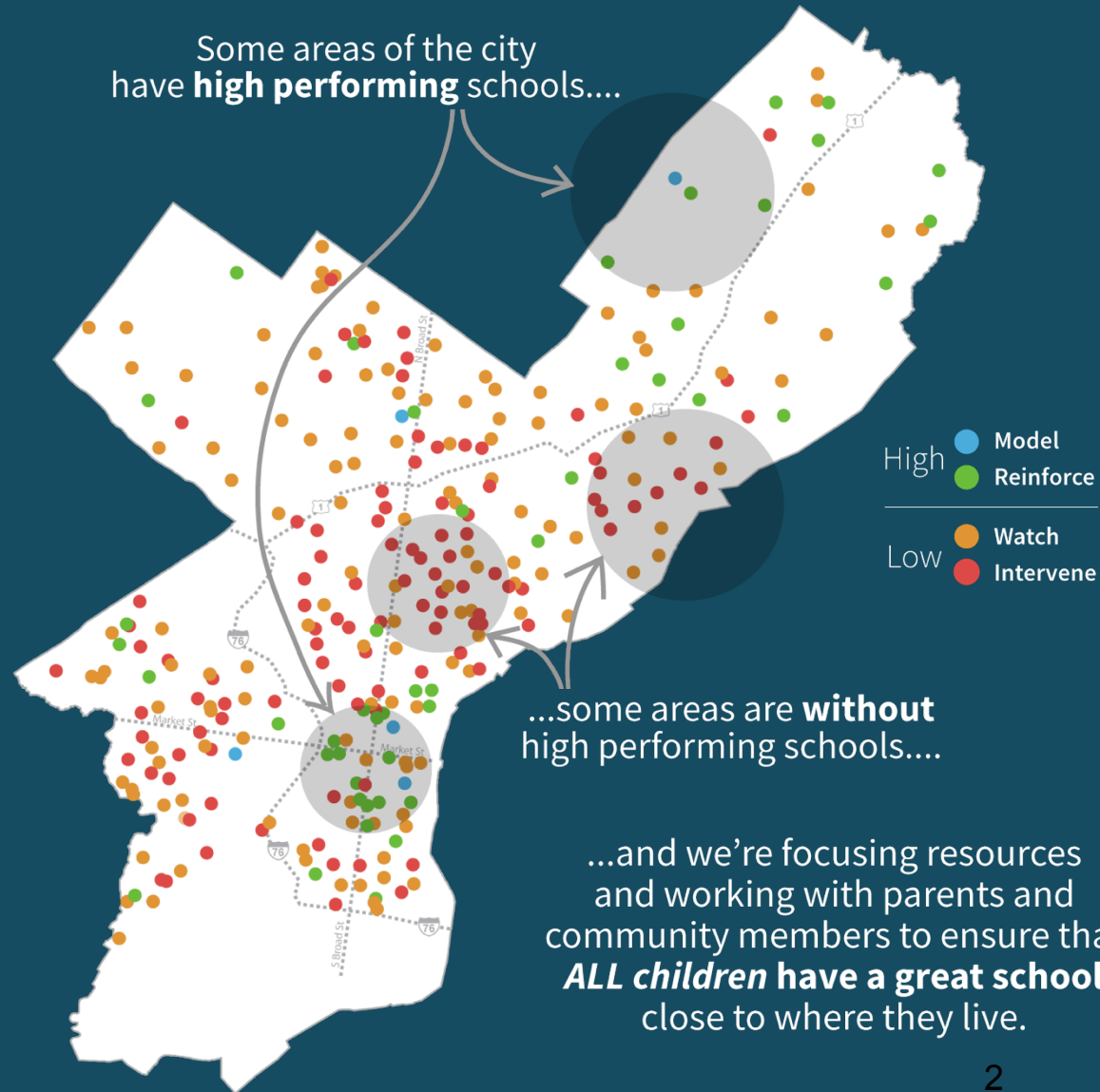
Steel Elementary School

10/3/17



THE SCHOOL DISTRICT OF
PHILADELPHIA

All children deserve **a great school** close to where they live.





All children deserve a great school close to where they live.

- Despite investments, some schools are not meeting students' needs.
- Some schools require support right now so that children can have the learning opportunities they deserve.
- To achieve the goal of a great school close to where all children live, it's important to identify schools to prioritize.



Important notes

- The school will not become a Renaissance Charter this year.
- The school will not close this year.
- No recommendations have been made.
- We want your high-impact ideas.



Why is my school being considered?

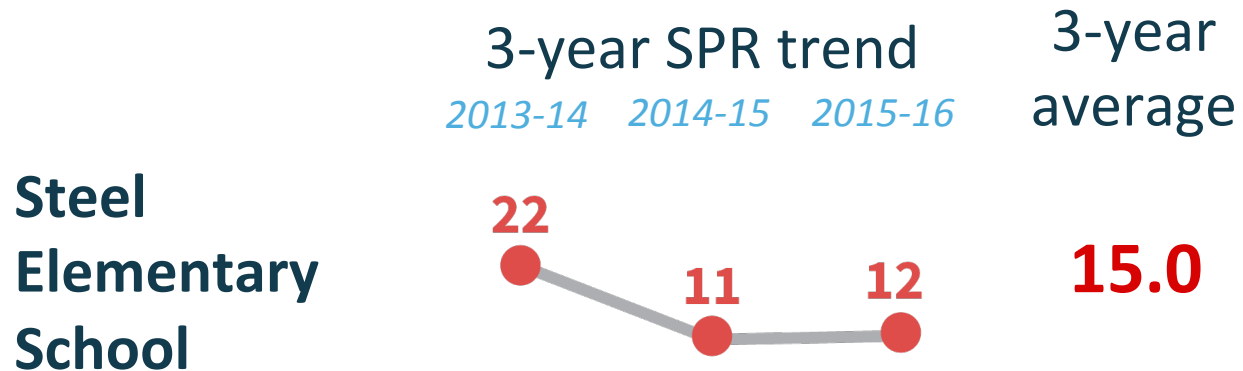
For the 2017 - 2018 school year, we're focusing on schools that meet three criteria.

- A school has been in intervene status on SPR for 3 consecutive years
- A school is not part of any current major intervention effort (e.g. Turnaround, School Redesign)
- The school's 3 year SPR average is equal to or less than 15 out of 100



Why is my school being considered?

School Progress Report





Discussion of school performance: Areas of success

Equity Progress
PSSA Mathematics

Our furthest behind students made growth in Math

Equity Progress
PSSA Reading

Our furthest behind students made growth in Reading

Student Survey
School Climate Rating

Most of our students feel that the school has a good climate

Parent Survey
School Climate Rating

Most of our parents/guardians feel that the school has a good climate



Discussion of school performance: Areas for improvement[^]

	Desired Performance	2015-16 Performance
Reading Achievement*	At least 60% of students on grade level in reading	<u>10%</u>
Math Achievement*	At least 60% of students on grade level in math	<u>1%</u>
Attendance	At least 50% of students miss no more than 8 days of school (\geq 95% attendance)	<u>34%</u>

[^] Not an exclusive list

* School year 2015-16 performance for achievement equals the percentage of students scoring proficient or advanced on the English language arts and math PSSA exams



Families are encouraged to participate in improving their child's school

- We want input from our families, teachers, principals, and community members about how best to improve academic outcomes.
- We will consider feedback, look at evidence gathered, and make recommendations on the best way to improve academic outcomes.
- By focusing on our most poorly performing schools, we aim to give all children access to better schools and make our neighborhoods stronger.

How can families be involved?



Attend school community meetings and focus groups.

- Community Input & Ideas Meeting
 - October 23, 5:30pm
- Feedback & Findings Meeting
 - November 20, 5:30pm



Share your thoughts and feedback at [www.philasd.org/greatschools/investmentsand interventions](http://www.philasd.org/greatschools/investmentsandinterventions).



Stay up to date and learn about other opportunities to get involved by visiting www.philasd.org/greatschools/interventionsandinvestments



Partners for improvement

Cambridge Education

Conduct school quality reviews including classroom visits, conversations with staff, students, and the principal, and reviews of programs and services

Temple University

Engage with communities to gather input on the school's strengths, challenges, and opportunities for improvement



What's next?

1

School Quality Reviews
and Family Feedback

Oct-Nov

2

District Reviews
Feedback and Data to
Inform Interventions

Dec-Jan

3

Superintendent
Decisions and
Recommendations

Jan-Early Feb

Options for improvement can include:



Entering the school into the District's Turnaround Network

- Additional PD & coaching
- Keep and hire best staff
- Additional supports



Engaging a school support service partner

- Additional support for
 - Vision development
 - Instructional coaching
 - School climate and operations
 - Data & assessment



Initiating a school-created plan for academic improvement

- Plan developed by school leader and designees
- Can include additional resources aligned to research-based strategies
- For schools exhibiting readiness



Restarting the school

- Partnering with an organization to redefine and implement a new school model



All children deserve a great school close to where they live.

- Each school has unique strengths and challenges and each school community is special.
- The goal for all children and all schools is the same:

to ensure that all children are able to learn and to succeed.