

# School Improvement Meeting

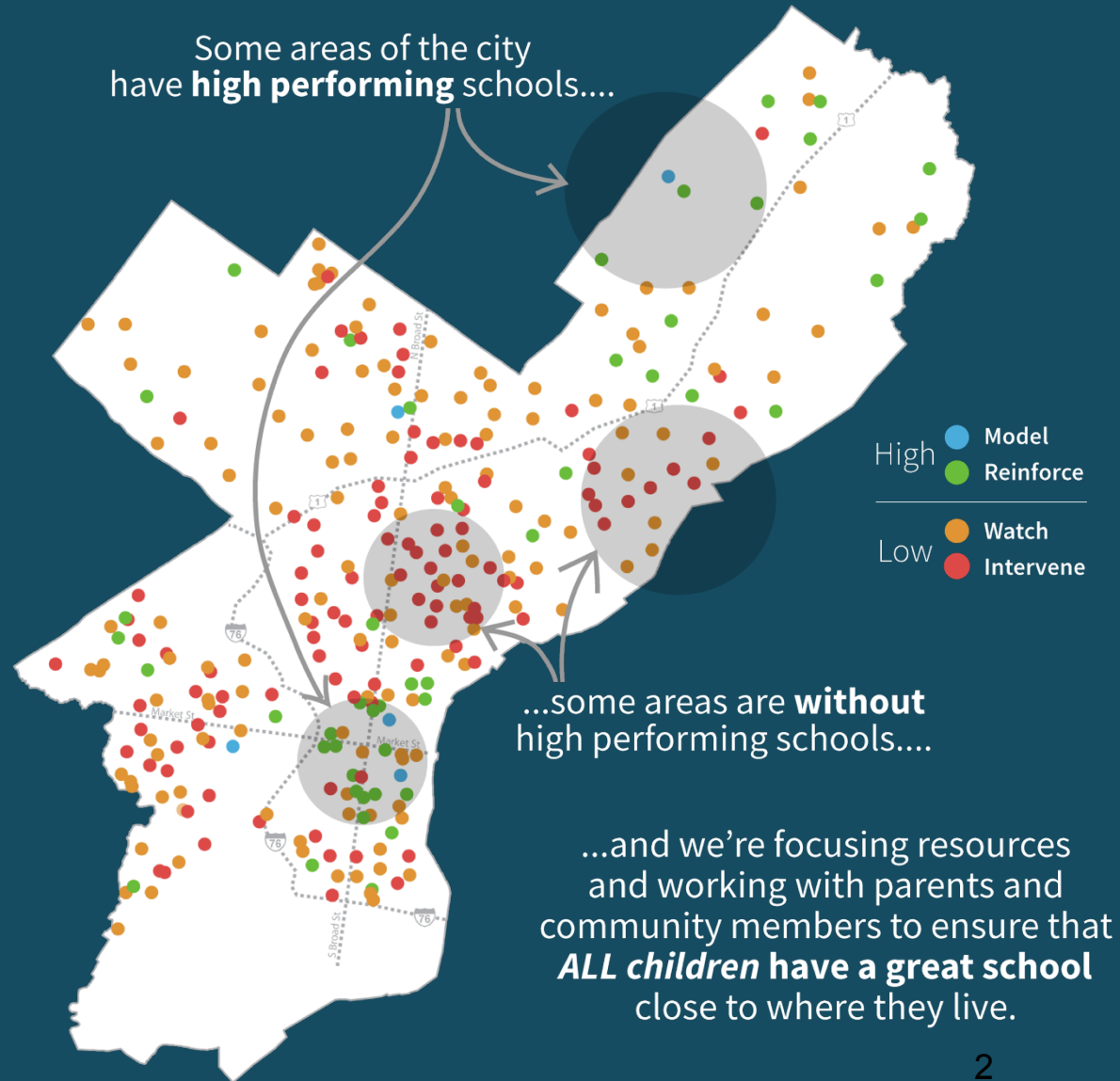
Rhoads Elementary School

*9/28/17*



THE SCHOOL DISTRICT OF  
PHILADELPHIA

# All children deserve **a great school** close to where they live.





## **All children deserve a great school close to where they live.**

- Despite investments, some schools are not meeting students' needs.
- Some schools require support right now so that children can have the learning opportunities they deserve.
- To achieve the goal of a great school close to where all children live, it's important to identify schools to prioritize.



## Important notes

- The school will not become a Renaissance Charter this year.
- The school will not close this year.
- No recommendations have been made.
- We want your high-impact ideas.



## Why is my school being considered?

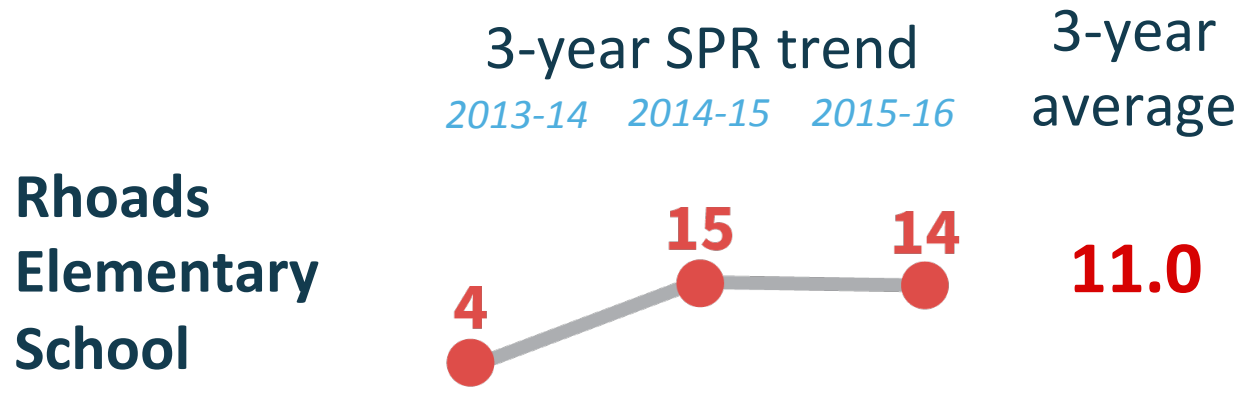
For the 2017 - 2018 school year, we're focusing on schools that meet three criteria.

- A school has been in intervene status on SPR for 3 consecutive years
- A school is not part of any current major intervention effort (e.g. Turnaround, School Redesign)
- The school's 3 year SPR average is equal to or less than 15 out of 100



# Why is my school being considered?

## School Progress Report





## Discussion of school performance: Areas of success

### Achievement

*Reading at Grade Level*

A majority of our students are reading at grade level

### Progress

*PSSA Mathematics*

Our students made growth in Math

### Student Survey

*School Climate Rating*

Most of our students feel that the school has a good climate

### Parent Survey

*School Climate Rating*

Most of our parents/guardians participated in the survey and feel that the school has a good climate



# Discussion of school performance: Areas for improvement<sup>^</sup>

	Desired Performance	2015-16 Performance
Reading Achievement*	At least 60% of students on grade level in reading	<u>16%</u>
Math Achievement*	At least 60% of students on grade level in math	<u>8%</u>
Attendance	At least 50% of students miss no more than 8 days of school ( $\geq$ 95% attendance)	<u>28%</u>

<sup>^</sup> Not an exclusive list

\* School year 2015-16 performance for achievement equals the percentage of students scoring proficient or advanced on the English language arts and math PSSA exams





## **Staff members are encouraged to participate in school improvement efforts**

- We want input from our families, teachers, principals, and community members about how best to improve academic outcomes.
- We will consider feedback, look at evidence gathered, and make recommendations on the best way to improve academic outcomes.
- By focusing on our most poorly performing schools, we aim to give all children access to better schools and make our neighborhoods stronger.

# How can staff members be involved?



Work with your principal and school leadership team to develop a data-driven plan to achieve school goals and participate in staff focus groups.



Encourage families and community members to share their thoughts and feedback at community meetings and focus groups as well as at [www.philasd.org/greatschools/investmentsandinterventions](http://www.philasd.org/greatschools/investmentsandinterventions).



Remain fully committed to your students and their families during this time of change.



Stay up to date and learn about other opportunities to get involved by visiting [www.philasd.org/greatschools/interventionsandinvestments](http://www.philasd.org/greatschools/interventionsandinvestments)



## Partners for improvement

### Cambridge Education

Conduct school quality reviews including classroom visits, conversations with staff, students, and the principal, and reviews of programs and services

### Temple University

Engage with communities to gather input on the school's strengths, challenges, and opportunities for improvement



## What's next?

1

School Quality Reviews  
and Family Feedback

**Oct-Nov**

2

District Reviews  
Feedback and Data to  
Inform Interventions

**Dec-Jan**

3

Superintendent  
Decisions and  
Recommendations

**Jan-Early Feb**

# Options for improvement can include:



## Entering the school into the District's Turnaround Network

- Additional PD & coaching
- Keep and hire best staff
- Additional supports



## Engaging a school support service partner

- Additional support for
  - Vision development
  - Instructional coaching
  - School climate and operations
  - Data & assessment



## Initiating a school-created plan for academic improvement

- Plan developed by school leader and designees
- Can include additional resources aligned to research-based strategies
- For schools exhibiting readiness



## Restarting the school

- Partnering with an organization to redefine and implement a new school model



## All children deserve a great school close to where they live.

- Each school has unique strengths and challenges and each school community is special.
- The goal for all children and all schools is the same:

**to ensure that all children are able to learn  
and to succeed.**