

School Improvement Meeting

Feltonville School of Arts and Sciences

10/9/17

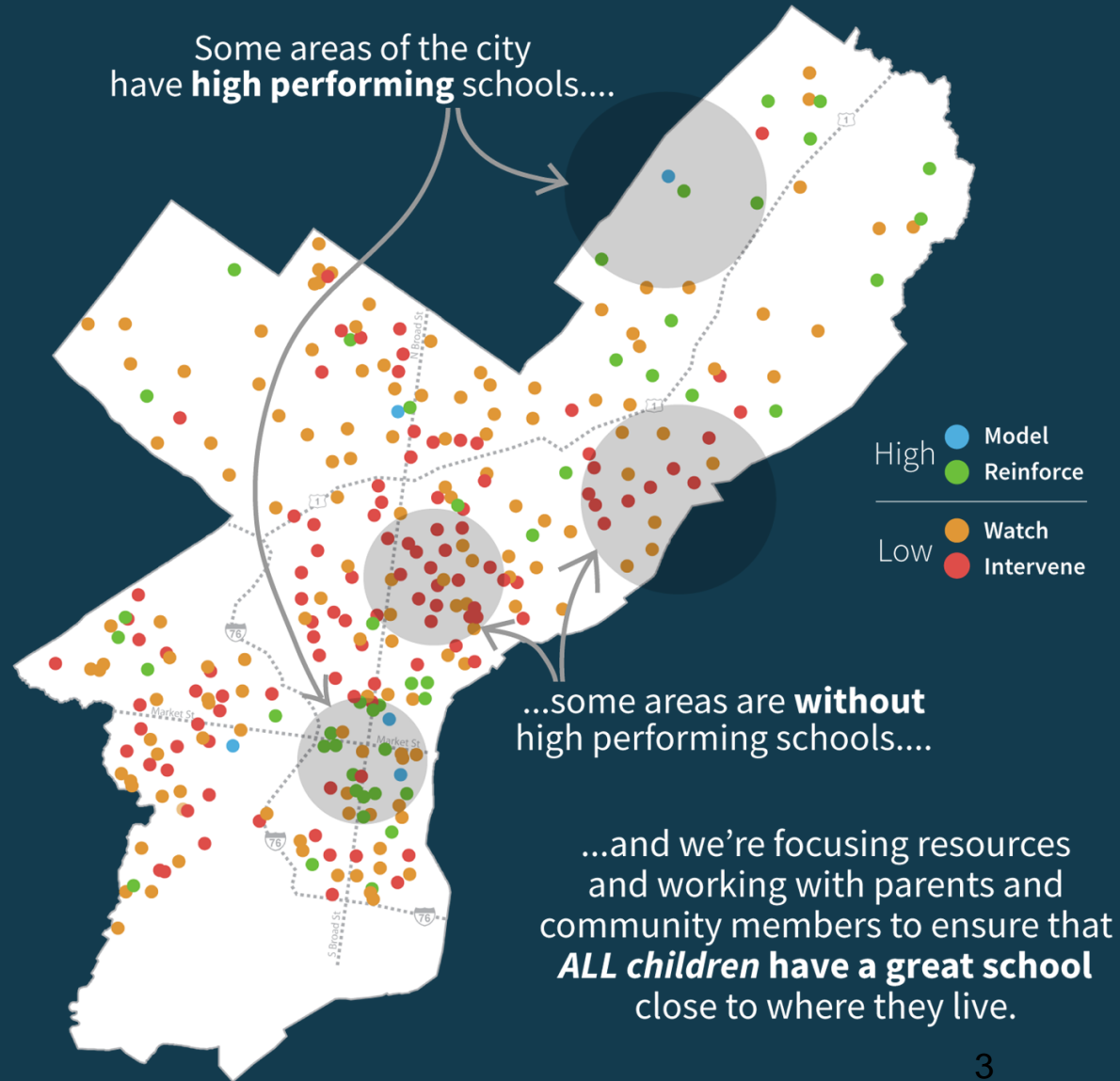


THE SCHOOL DISTRICT OF
PHILADELPHIA

Agenda

- Why We Are Here
- School Data
- Details on the Process
- Family and Community Input

All children deserve **a great school** close to where they live.





All children deserve a great school close to where they live.

- Despite investments and efforts of continuous improvement, some schools are not meeting students' needs.
- Some schools require additional support so that children can have the learning opportunities they deserve.
- To achieve the goal of a great school close to where all children live, we need your input to
 - better understand the school's strengths and challenges
 - invest additional resources to support students' needs



Important notes

- Becoming a charter school is not an option in this process.
- Closure is not an option in this process.
- No recommendations have been made.
- We want your high-impact ideas.



Why is my school being considered?

For the 2017-2018 school year, we're focusing on schools that meet three criteria.

- A school has been in intervene status on SPR for 3 consecutive years
- A school is not part of any current major intervention effort (e.g. Turnaround, School Redesign)
- The school's 3 year SPR average is equal to or less than 15 out of 100

Right now, we're using the most recently available SPR from 2015-16 school year.

2016-17 SPR will also be considered in this process when it becomes available in January.



Note about School Progress Report (SPR)

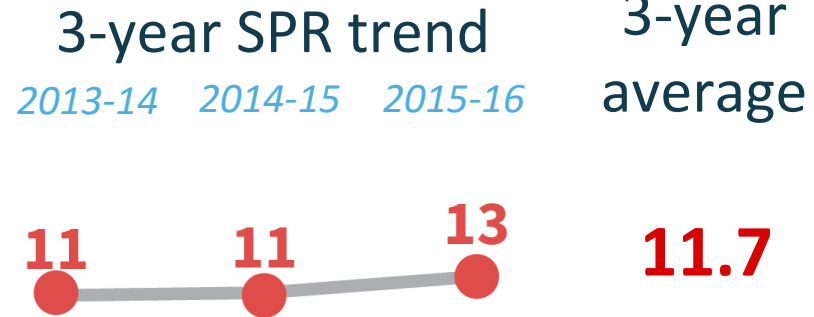
- The SPR is one of the District's measures of school quality
- SPR data includes (and is not limited to)...
 - Achievement
 - Growth
 - Attendance
 - Parent and student survey feedback
 - Suspensions
 - Graduation rates for high schools



Why is my school being considered?

School Progress Report

**Feltonville
School of
Arts and
Sciences**





Discussion of school performance: Areas of success

Equity Progress
PSSA Mathematics

Our furthest behind students made growth in Math

Student Survey
School Climate Rating

Most of our students feel that the school has a good climate

Parent Survey
School Climate Rating

Most of our parents/guardians participated in the survey and feel that the school has a good climate

In our two years together:

The percent of students attending 95% of school went from 29% to 45%

An increase of 51%

The percent of students without a suspension went from 74% to 90%

An increase of 21%

Our strategic & intentional work with improving climate and academic outcomes has our SPR going from 11% to 25%+

An increase of 51%



Discussion of school performance: Areas for improvement[^]

	Desired Performance	2015-16 Performance	2016-17 Performance
Reading Achievement*	At least 60% of students on grade level in reading	<u>20%</u>	<u>22%</u>
Math Achievement*	At least 60% of students on grade level in math	<u>6.4%</u>	<u>6.8%</u>
Attendance	At least 50% of students miss no more than 9 days of school (\geq 95% attendance)	<u>34%</u>	<u>44%</u>

[^] Not an exclusive list

* School year 2015-16 performance for achievement equals the percentage of students scoring proficient or advanced on the English language arts and math PSSA exams



Families are encouraged to participate in improving their child's school

- We want input from our families, teachers, principals, and community members about how best to improve academic outcomes.
- We will consider feedback, look at evidence gathered, and make recommendations on the best way to improve academic outcomes.
- By focusing on our most poorly performing schools, we aim to give all children access to better schools and make our neighborhoods stronger.

How can families be involved?



Attend school community meetings and focus groups.

- Community Input & Ideas Meeting
 - October 23, 5:30pm
- Feedback & Findings Meeting
 - November 20, 5:30pm



Share your thoughts and feedback at www.philasd.org/greatschools/investmentsandinterventions.



Stay up to date and learn about other opportunities to get involved by visiting www.philasd.org/greatschools/interventionsandinvestments



Partners for improvement

Cambridge Education

Conduct school quality reviews including classroom visits, conversations with staff, students, and the principal, and reviews of programs and services

Temple University

Engage with communities to gather input on the school's strengths, challenges, and opportunities for improvement



What's next?

1

School Quality Reviews
and Family Feedback

Oct-Nov

2

District Reviews
Feedback and Data to
Inform Interventions

Dec-Jan

3

Superintendent
Decisions and
Recommendations

Jan-Early Feb

Options for improvement can include:



Entering the school into the District's Turnaround Network

- Additional PD & coaching
- Keep and hire best staff
- Additional supports



Engaging a school support service partner

- Additional support for
 - Vision development
 - Instructional coaching
 - School climate and operations
 - Data & assessment



Initiating a school-created plan for academic improvement

- Plan developed by school leader and designees
- Can include additional resources aligned to research-based strategies
- For schools exhibiting readiness



Restarting the school

- Partnering with an organization to redefine and implement a new school model



All children deserve a great school close to where they live.

- Each school has unique strengths and challenges and each school community is special.
- The goal for all children and all schools is the same:

**to ensure that all children are able to learn
and to succeed.**

Agenda

- Why We Are Here
- School Data
- Details on the Process
- Family and Community Input

www.philasd.org/greatschools/interventionsandinvestments