

# School Improvement Meeting

Gideon Elementary School

*10/4/17*

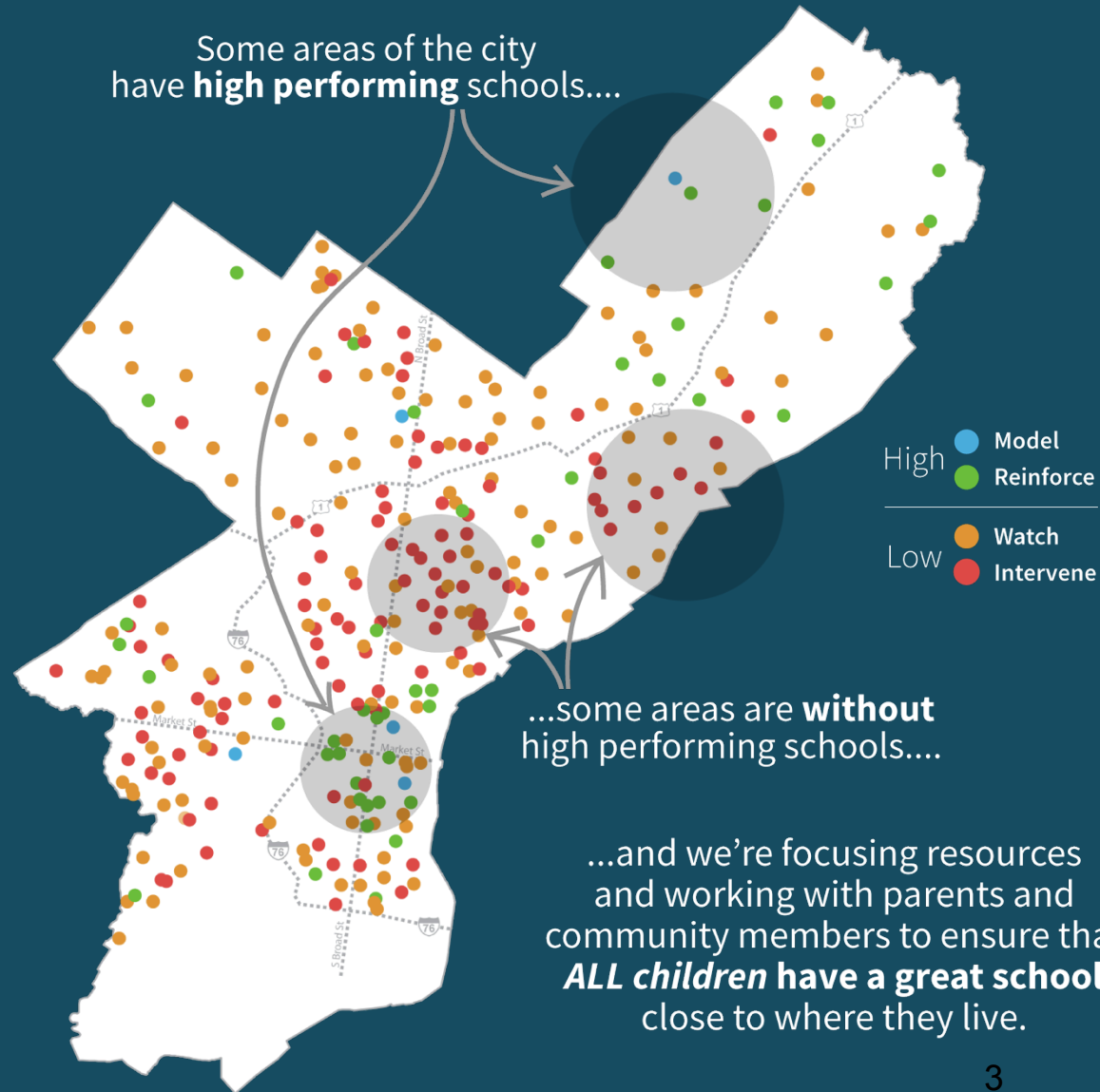


THE SCHOOL DISTRICT OF  
PHILADELPHIA

# Agenda

- Why We Are Here
- School Data
- Details on the Process
- Family and Community Input

# All children deserve **a great school** close to where they live.





## All children deserve a great school close to where they live.

- Despite investments and efforts of continuous improvement, some schools are not meeting students' needs.
- Some schools require additional support so that children can have the learning opportunities they deserve.
- To achieve the goal of a great school close to where all children live, we need your input to
  - better understand the school's strengths and challenges
  - invest additional resources to support students' needs



## Important notes

- Becoming a charter school is not an option in this process.
- Closure is not an option in this process.
- No recommendations have been made.
- We want your high-impact ideas.



## Why is my school being considered?

For the 2017-2018 school year, we're focusing on schools that meet three criteria.

- A school has been in intervene status on SPR for 3 consecutive years
- A school is not part of any current major intervention effort (e.g. Turnaround, School Redesign)
- The school's 3 year SPR average is equal to or less than 15 out of 100

Right now, we're using the most recently available SPR from 2015-16 school year.

2016-17 SPR will also be considered in this process when it becomes available in January.



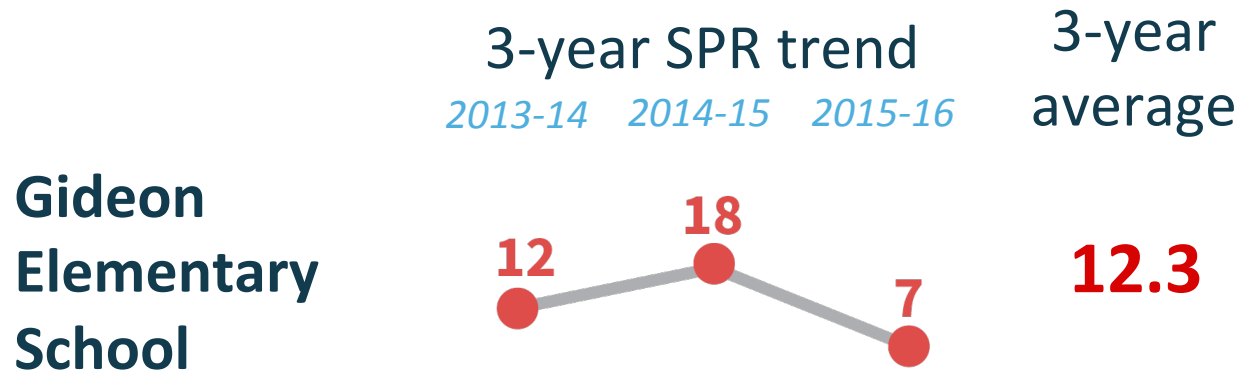
## Note about School Progress Report (SPR)

- The SPR is one of the District's measures of school quality
- SPR data includes (and is not limited to)...
  - Achievement
  - Growth
  - Attendance
  - Parent and student survey feedback
  - Suspensions
  - Graduation rates for high schools



# Why is my school being considered?

## School Progress Report







## Discussion of school performance: Areas of success

### Achievement

*Reading at Grade Level*

A majority of our K-2 students are reading at grade level

### Parent Survey

*School Climate Rating*

Most of our parents/guardians feel that the school has a good climate



# Discussion of school performance: Areas for improvement<sup>^</sup>

	Desired Performance	2015-16 Performance
Reading Achievement*	At least 60% of students on grade level in reading	<u>12%</u>
Math Achievement*	At least 60% of students on grade level in math	<u>6%</u>
Attendance	At least 50% of students miss no more than 8 days of school ( $\geq$ 95% attendance)	<u>35%</u>

<sup>^</sup> Not an exclusive list

\* School year 2015-16 performance for achievement equals the percentage of students scoring proficient or advanced on the English language arts and math PSSA exams



## **Families are encouraged to participate in improving their child's school**

- We want input from our families, teachers, principals, and community members about how best to improve academic outcomes.
- We will consider feedback, look at evidence gathered, and make recommendations on the best way to improve academic outcomes.
- By focusing on our most poorly performing schools, we aim to give all children access to better schools and make our neighborhoods stronger.

# How can families be involved?



Attend school community meetings and focus groups.

- Community Input & Ideas Meeting
  - October 11, 5:30pm
- Feedback & Findings Meeting
  - November 8, 5:30pm



Share your thoughts and feedback at [www.philasd.org/greatschools/investmentsand interventions](http://www.philasd.org/greatschools/investmentsandinterventions).



Stay up to date and learn about other opportunities to get involved by visiting [www.philasd.org/greatschools/interventionsandinvestments](http://www.philasd.org/greatschools/interventionsandinvestments)



## Partners for improvement

### Cambridge Education

Conduct school quality reviews including classroom visits, conversations with staff, students, and the principal, and reviews of programs and services

### Temple University

Engage with communities to gather input on the school's strengths, challenges, and opportunities for improvement



## What's next?

1

School Quality Reviews  
and Family Feedback

**Oct-Nov**

2

District Reviews  
Feedback and Data to  
Inform Interventions

**Dec-Jan**

3

Superintendent  
Decisions and  
Recommendations

**Jan-Early Feb**

# Options for improvement can include:



## Entering the school into the District's Turnaround Network

- Additional PD & coaching
- Keep and hire best staff
- Additional supports



## Engaging a school support service partner

- Additional support for
  - Vision development
  - Instructional coaching
  - School climate and operations
  - Data & assessment



## Initiating a school-created plan for academic improvement

- Plan developed by school leader and designees
- Can include additional resources aligned to research-based strategies
- For schools exhibiting readiness



## Restarting the school

- Partnering with an organization to redefine and implement a new school model



## All children deserve a great school close to where they live.

- Each school has unique strengths and challenges and each school community is special.
- The goal for all children and all schools is the same:

**to ensure that all children are able to learn  
and to succeed.**



# Agenda

- Why We Are Here
- School Data
- Details on the Process
- Family and Community Input

[www.philasd.org/greatschools/interventionsandinvestments](http://www.philasd.org/greatschools/interventionsandinvestments)