

# School Improvement Meeting

## James Rhoads School

**2/1/18**



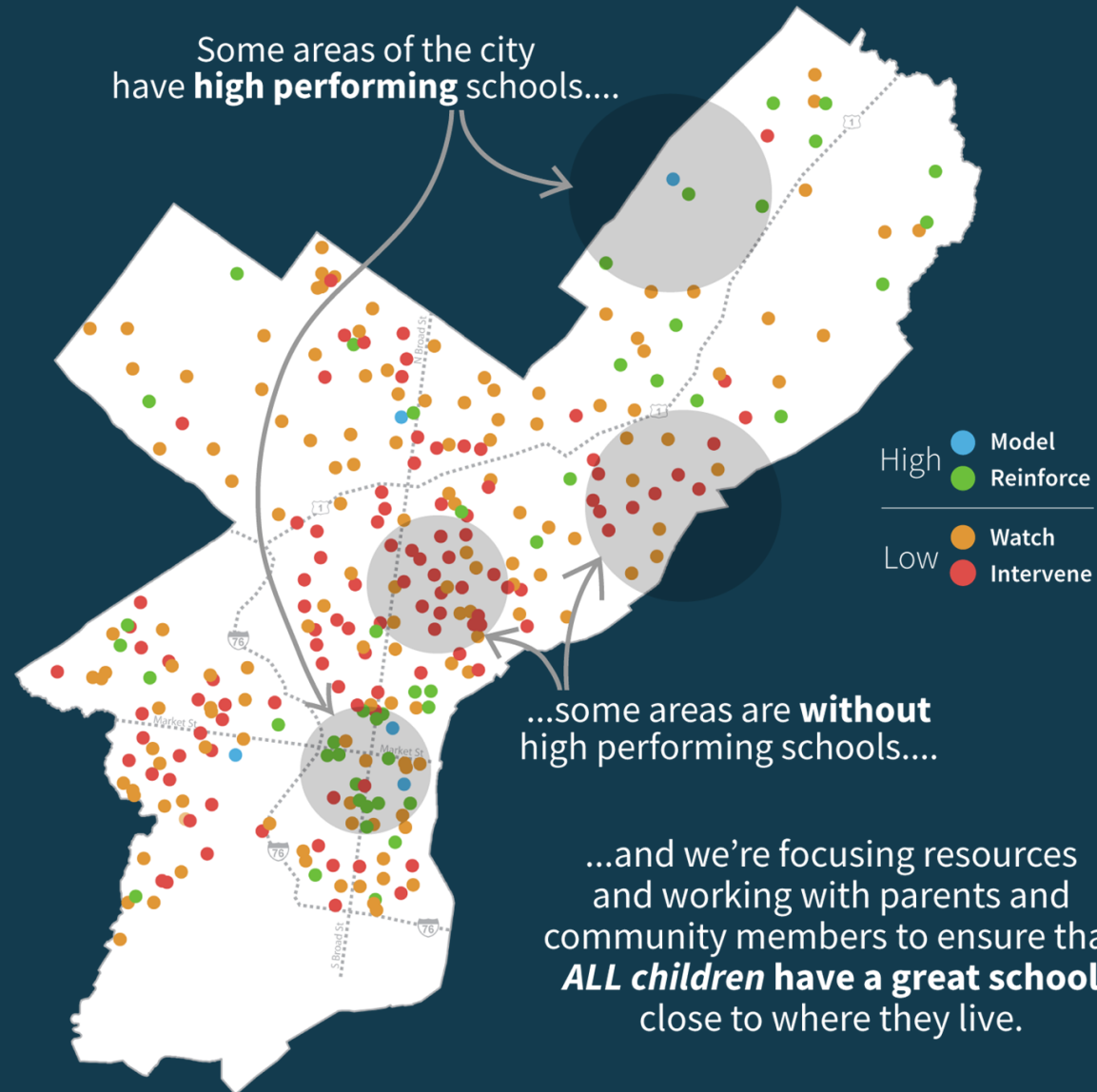
THE SCHOOL DISTRICT OF  
PHILADELPHIA



# Agenda

- Why we're here
- Feedback and findings
- Recommendation and investments
- How you can stay involved
- Questions
- Next steps

# All children deserve **a great school** close to where they live.





## **All children deserve a great school close to where they live.**

- Despite investments, some schools are not meeting students' needs and require additional support right now.
- To achieve the goal of a great school close to where all children live, it's important to identify schools to prioritize and work with school communities to rapidly improve academic outcomes for students.



## Timeline

1

School Quality  
Reviews and Family  
Feedback  
(Sept – Nov)

2

District Reviews  
Feedback and Data to  
Inform Interventions  
(Dec – Jan)

3

Superintendent  
Decisions and  
Recommendations  
(Feb)



## Data and information considered to make the recommendation

- SPR data from 2014-2015 to 2016-2017
- Student enrollment and demographic information
- Attendance
- Suspensions
- Grades
- Student, teacher, parent survey results
- Parent and Community Stakeholder Input Report
- School Quality Review (SQR)



## School Quality Review and family feedback findings

- Factors that **support** learning at Rhoads:
  - Principal has communicated vision to school team and made positive impression on parents so far this year
  - Suspensions have decreased
  - K-3 teachers create welcoming environment
  - Class Dojo used well to engage and communicate with families



## School Quality Review and family feedback findings

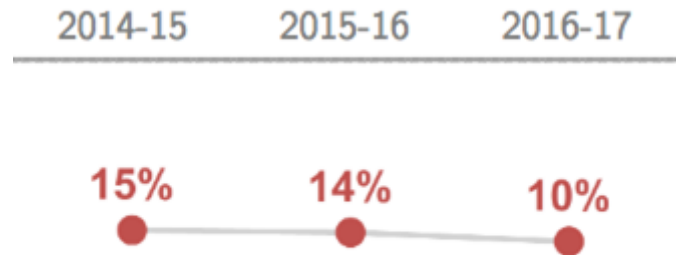
- Factors that **limit** learning at Rhoads:
  - Instruction is not challenging enough for all students
  - Systems for observing teachers and giving high-quality feedback needs improvement
  - Student attendance is below average and the same as last year
  - Lack of formal climate and culture strategies and supports





What does the most recent data say?

## Updated School Progress Report James Rhoads School





## Recommendation



## Turnaround Network Model






Focusing on what matters most:

- Identifying and cultivating principals to be **great turnaround leaders**
- Establishing a **teaching and learning** continuous improvement process
- Investing in people by providing **professional growth** opportunities to enhance instructional capacity and delivery
- Providing resources to support a **healthy and safe learning environment**
- Engaging the **school community** in the turnaround process



# Turnaround Network Model



 <b>Cultivate turnaround principals</b>	 <b>Teaching and learning continuous improvement</b>	 <b>Professional growth</b>	 <b>Healthy and safe learning environment</b>	 <b>Community engagement</b>
<ul style="list-style-type: none"> <li>• Inspiring school leaders</li> <li>• Increased attention to school leaders</li> <li>• Ongoing site visits to monitor fidelity of implementation</li> </ul>	<ul style="list-style-type: none"> <li>• Monthly data meetings to monitor student outcomes</li> <li>• Individual attention to students and differentiated instruction</li> <li>• Use of adaptive and diagnostic technology to support student mastery</li> </ul>	<ul style="list-style-type: none"> <li>• Job embedded coaching</li> <li>• Summer Turnaround professional development</li> <li>• Professional learning communities</li> <li>• Monthly professional growth opportunities</li> </ul>	<ul style="list-style-type: none"> <li>• Positive student academic outcomes and behaviors</li> <li>• Reduced class sizes</li> <li>• Specialized staff to coordinate services and respond to student need</li> <li>• Embedded student advisory block</li> </ul>	<ul style="list-style-type: none"> <li>• Community advisory councils</li> <li>• Partnerships aligned to academic goals</li> </ul>



## What investments are coming?

- Up to \$1 million in additional funding to support school improvement
- Priority for hiring and filling vacancies
- Building improvements and investments connected to the school's plan
- Priority for larger scale capital projects in next year's budget

# How can families stay involved?



Contact your principal if interested in serving on School Advisory Council. Stay tuned for upcoming community engagement opportunities.



Share your thoughts and feedback at [www.philasd.org/greatschools/investmentsandinterventions](http://www.philasd.org/greatschools/investmentsandinterventions)



## All children deserve a great school close to where they live.

- Each school has unique strengths and challenges and each school community is special.
- The goal for all children and all schools is the same:

**to ensure that all children are able to learn and to succeed.**