

School Improvement Meeting

Penn Treaty School

2/1/18



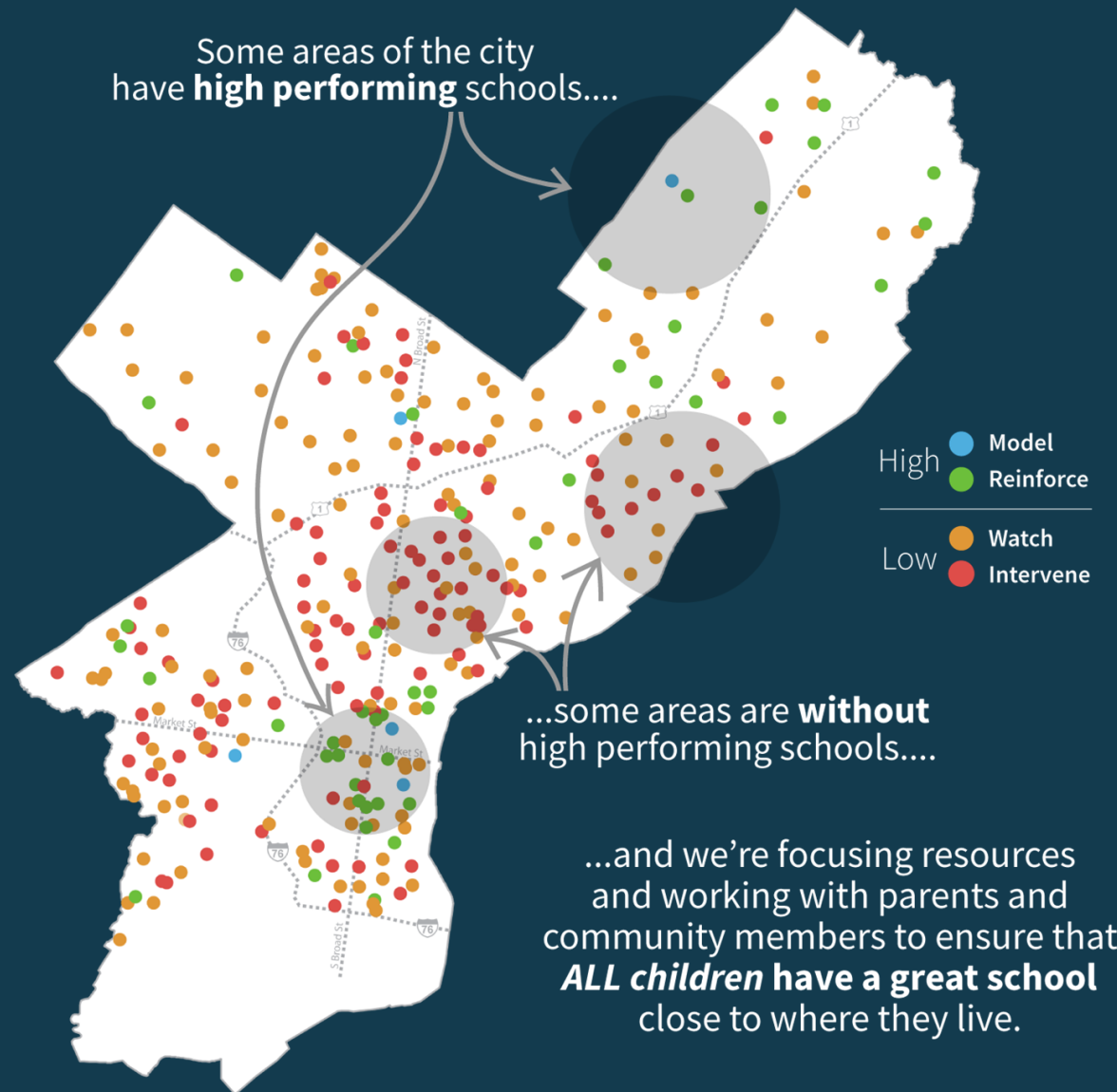
THE SCHOOL DISTRICT OF
PHILADELPHIA



Agenda

- Why we're here
- Feedback and findings
- Recommendation and investments
- How you can stay involved
- Questions
- Next steps

All children deserve a **great school** close to where they live.





All children deserve a great school close to where they live.

- Despite investments, some schools are not meeting students' needs and require additional support right now.
- To achieve the goal of a great school close to where all children live, it's important to identify schools to prioritize and work with school communities to rapidly improve academic outcomes for students.



Timeline

1

School Quality
Reviews and Family
Feedback
(Sept – Nov)

2

District Reviews
Feedback and Data to
Inform Interventions
(Dec – Jan)

3

Superintendent
Decisions and
Recommendations
(Feb)



Data and information considered to make the recommendation

- SPR data from 2014-2015, 2015-2016 and 2016-2017
- Student enrollment and demographic information
- Attendance
- Suspensions
- Grades
- Student, teacher, parent survey results
- Parent and Community Stakeholder Input Report
- School Quality Review (SQR)



Feedback and findings

- Factors that **support** learning:
 - Principal has strong relationships with teachers, students and families
 - Climate is warm and inviting and has improved over time
 - Staff is committed to school improvement
 - School communicates well with parents and is responsive to their concerns



Feedback and findings

- Factors that **limit** learning:
 - Instruction is not challenging enough for all students
 - Inconsistent use of restorative practices
 - High percentage of chronically absent students in high school
 - Desire for more parent involvement

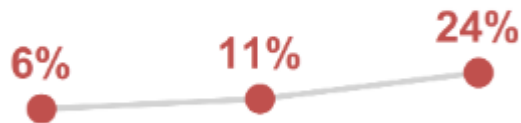


What does the most recent data say?

Updated School Progress Report Penn Treaty School

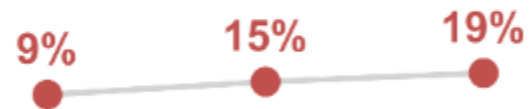
Middle School

2014-15 2015-16 2016-17



High School

2014-15 2015-16 2016-17





Recommendation



Academic Improvement Plan

- A plan developed by the principal, their planning team and with support from central office
- Additional funding to support the school's plan for improvement
- Focus on clear and bold school vision and the best approaches, programs and practices to support learning



What investments are coming?

- Up to \$1 million in additional funding to support school developed plan for improvement
- Building improvements and investments connected to the school's plan
- Priority for larger capital projects in next year's budget
- Support from Institute for Student Achievement

How can staff stay involved?



Provide direct input to the plan by committing to the planning team



Provide feedback on the plan during review meetings in March and April



Share your thoughts and feedback at www.philasd.org/greatschools/investmentsandinterventions.

How can families stay involved?



Provide direct input to the plan by committing to the planning team



Provide feedback on the plan during review meetings in March and April



Share your thoughts and feedback at www.philasd.org/greatschools/investmentsandinterventions.



All children deserve a great school close to where they live.

- Each school has unique strengths and challenges and each school community is special.
- The goal for all children and all schools is the same:

**to ensure that all children are able to learn
and to succeed.**