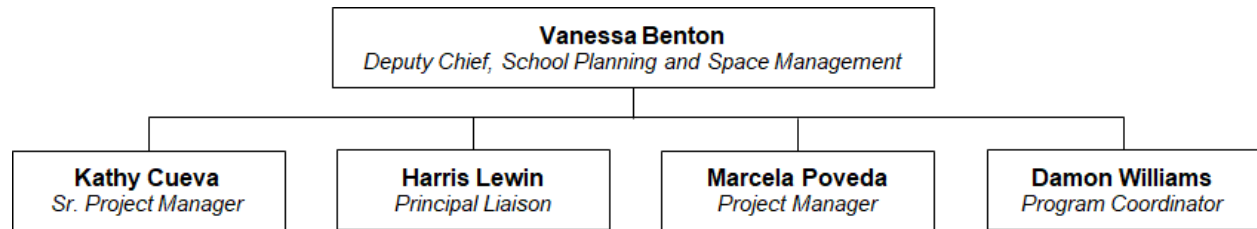


STUDY AREA 1 PLANNING COMMITTEE ORIENTATION

Tuesday, November 19, 2019

The Comprehensive School Planning Review (CSPR) is a collaborative process that will assess the District's neighborhood enrollment, school facilities, and educational program offerings, to help us plan for the future in a way that ensures our students have access to a great school close to where they live.

The CSPR project is being managed by **The School District of Philadelphia and Bloom Planning**



Ingrid Boucher, Founder & Principal Bloom Planning

- Community and Stakeholder Engagement
- Meeting planning and facilitation

CSPR is a...

- months-long process of collaboration and learning.
- way to use rich information to inform how to better utilize resources, facilities, and academic programming available to best meet the needs of children in each of our respective study areas.
- major responsibility for planning team members who will:
 - weigh the benefits and drawbacks of the different options.
 - determine best outcome(s) for the larger population of children and families in a given study area.

CSPR is not an...

- extension Boston Consulting Group's 2012 proposal, which was focused on stabilizing the District's finances, resulting in multiple school closures.
- immediate solution to school-based environmental and facilities issues.
- engagement exercise with a predetermined outcome.

CSPR Goals

Optimizing utilization of our buildings to ensure students have access to a high-quality school close to where they live

- Investing limited capital dollars where needed most
- Creating thoughtful transitions for students at elementary and middle grades
- Maximizing use of public assets (City/District)
- Better supporting academic programs that prepare our students for college and career success

Guiding Principles

- Make Pre-K available in as many elementary school locations as possible
- Provide a clear PreK-12 continuum for families in their neighborhoods with preferred grade configurations: PreK-5, PreK-8, 6-8, 6-12, 9-12
- Provide all children access to any needed educational programming (i.e., SPED, ESOL, gifted, PreK)
- Direct resources in an equitable - not equal - way to meet the needs of neighborhoods

CSPR Potential Recommendations

Potential recommendations could include, but are not limited to, any one, or combination of the following:

- **Addition/New Construction:** The construction of a new or renovation of an existing building to meet future demand.
- **Boundary Change:** A realignment of boundaries to accommodate projected changes in populations and communities across our city.
- **Closing:** The elimination of an academic program and/or school facility.
- **Co-Location:** Sharing underutilized space for appropriate educational or administrative functions.
- **Consolidation:** A realignment of student population in order to better serve the educational needs of students.
- **Grade Change:** The addition or reduction of grades
- **Relocation:** Movement of an educational program to another facility.
- **Replication:** the replication of high quality academic programming
- **Policy changes:** Changes to district policy and admin procedures

CSPR Cycle 1 Timeline



Our Process places expert and community input at the center of this important work.

- **FLO Analytics** developing current and future population snapshots of each study area and potential school-level impacts. Provide Design, Implementation and Use of Geographic Information System (GIS) mapping and Data Analytics
 - **Tyler Vick**, Managing Director (not present)
 - **Jerry Oelerich**, Director of Operations
 - **Jenny Axelrod**, Senior GIS Analyst

- The **Advisory Team**, a broad stakeholder team with deep district and educational knowledge, will inform the development of options and recommendations

Justin Bangs, Asst Dir, Operations
Sonya Berry, ED Field Support & Serv
Shawn Bird, Chief Schools Officer
Kathryn Block, Chief, Comms & Extl Relations
Malika Savoy-Brooks, Chief Academic Support Officer
Diane Castelbuono, Deputy Chief Early Childhood
Leigh Clark, Operations Manager Capital Prg
Chris Davies, Dir System Of Great Schools
Linda Faber, Dir, Student Info Systems Development
Danielle Floyd, Chief Operating Officer
Nyshawana Francis-Thompson, ED Instruct Prg & Serv
Christina Grant, Chief, Charter Schools
Elizabeth Gutman, Senior General Counsel

Melanie Harris, Chief Information Officer
Michelle Linder-Coates, ED Partnership Sup & Dev
Marissa Litman, Dir Budget Planning and Analysis
Karyn Lynch, Chief Student Support Svc Ofcr
Frank Machos, Ex Dir Trd & Van/Academic Enrich
Kelli Mckenna, Dir Budget Operations
Jenna Monley, Deputy Parent & Family Srvc
Larisa Shambaugh, Chief Talent Officer
Allison Still, Deputy Chief, Multilingual
Barbara Strand, Real Property Mgmt Specialist
Tonya Wolford, Chief, Eval, Rsrch & Accountability
Naomi Wyatt, Chief of Staff

Planning Committees are a broad stakeholder team with deep community knowledge that will inform the development of options and recommendations. Study Area 1 Planning Committee members are listed below.

<p>Assistant Superintendents Jessica Ramos Sonya Harrison Rikki Hunt-Taylor</p> <p>Principals Kelly Espinosa Lauren Overton Natalie Catin-St Louis Rebecca Julien Gretchen Stewart Andrew Lukov Stacey Burnley Eileen Coutts Anastasia Riley Mary Libby</p> <p>City Council District 1 - Office of Mark Squilla, Anne Kelly District 2 - Office of Kenyatta Johnson, Chris Sample</p> <p>City Planners Ayse Unver Martine Decamp</p>	<p>Arthur: B. Garwood, F.A. Wilson, I. Olesh Childs: D. Setiawan, J. Feinman, O. Hamilton Wearing Jackson: C. Fordham, K. Konya, S. Kloss Kirkbride: C. Harper, L. Goldenberg, M. Hernandez McDaniel: E. De-Feo Arbakav, M. Toby Meredith: E. Litke, S. Koilor, T. Gabriel Nebinger: B. Schindler, G. Sacharok, M. Ditto Southwark: M. Ingerson, M. Michel, S. Sosa Stanton: C. Stromberg, F. Mickens Vare-Washington: S. Klunk, S. Braceland, T. LeVan</p>
---	---

Planning Committee Expectations

- Commit to attending meetings
- Take a system-wide look to help solve for specific study area challenges and to achieve overall goals/objectives
 - Be open to learning and understanding how populations and communities across our city are projected to change
 - Be objective and consensus-minded
 - Offer insight and perspective
- Assist in community outreach efforts and engage other parents/teachers and advocates

Planning Committee Meeting Norms

1. Be present
2. Keep the needs of the students at the center of discussion
3. Speak your truth and speak for yourself, not others, both inside and outside of our sessions
4. Listen to learn and understand, not to win
5. Assume colleagues' good intent and equal effort
6. Monitor talk time
7. Stay in the solution
8. Use technology during breaks
9. To support the safe exploration of possibility without fear of exposure or reprisal, refrain from social media posting related to the CSPR while in session
10. Remember that this is an iterative process, designed to evolve over time, given input from all participants

The Community will be able to provide input on options for Planning Committee consideration at **Community Input Forums** scheduled for each Study Area.

Study Area 1 Meetings Scheduled:

Location:	South Philadelphia High School 2101 S Broad St, Philadelphia, PA
Meeting Day/Time:	Tuesdays from 6:00 p.m. - 8:00 p.m.
Planning Committee Dates:	November 19, 2019 December 3, 2019 December 17, 2019 January 7, 2020 February 4, 2020 February 18, 2020 March 17, 2020
Community Forum Dates:	January 21, 2020 March 3, 2020

**Translated versions will be available soon*